

INDEX.

NOTE.—Figures in heavy type relate to the principal discussion of the products or processes referred to.

A.

Abrasives, manufactured, *see* Manufactured abrasives.
Admiralty, 292, 294, 295, 297, 300, 301, 303, 305, 307, 308, 310, 311, 405, **407-18**.
Civil Engineering Departments, 405, **413-5**.
Dockyards, 405, **407-10**.
Electricity undertakings, 405, **416-8**.
Ordnance depots, 405, **411-3**.
Victualling yards, 405, **415-6**.
Agricultural and horticultural implements and appliances, poultry houses, &c., 141.
Agricultural pipes, **197, 199, 203, 205**.
Air Ministry, 406, **431-3**.
Building Departments, 406, **433**.
Laundries, 406, **432-3**.
Workshops, 406, **431-2**.
Alundum, artificial, *see* Artificial corundum, alundum, &c.
Aluxite, artificial, *see* Artificial corundum, &c.
Ammonia, sulphate of, 316, 317, 323, 328.
Ammoniacal liquor, **316, 323, 328**.
Ammunition, 419.
Packages, repair and overhaul of, **411**.
Repair, overhaul and filling of, **411**.
Small arms, military, **419**.
Anthracite coal, **20, 21, 22, 26**.
Anti-gas apparatus, **419**.
Architectural granite, *see* Monumental and architectural.
Architectural terra-cotta and faience, **197, 199, 200, 205**.
Armoured cars, *see* Tanks, &c.
Arsenic, **39, 44**.
Art furnishings, *see* Casement curtains and art furnishings.
Artificial corundum, alundum, aluxite, &c., **266, 267**.
Artificial stone, blocks, slabs, &c., 67, 72, 236, 239, 249, 279, 285.

Artists' brushes, **146, 148, 149, 150, 153**.
Asbestos Trade, **255-263**.
Asphalt and bitumen, **239, 241, 249**.
Automatic, machine and quick-firing guns and parts, **419**.

B.

Ball clay, **64, 66, 67, 72**.
Bamboo furniture, 114, 119.
Barrels, *see* Casks and barrels.
Barrows, *see* Carpentry work.
Barytes :
Ground, **39, 40, 44**.
Unground, **39, 40, 44**.
Basalt, *see* Granite, basalt, &c.
Basket and Wicker-work Trades, 78, 80, 81, 82, 83, 84, 85, 86, 88, 90, 91, 94, **167-74**.
Baskets, **169, 172**.
Bath bricks, hearth stones, &c., **198, 199, 205**.
Battens, *see* Deals, battens, etc.
Battle-practice targets, **408**.
Bayonets, *see* Swords, &c.
Beacons, *see* Buoys and beacons.
Bedding, cushions, quilts, &c., **113, 119**.
Benzol, **316, 317, 323, 328**.
Binding :
Post Office Savings Bank Department, **429**.
Stationery Office, **437**.
Bitumen, *see* Asphalt and bitumen.
Blasting accessories, *see* Fuses and blasting accessories.
Blinds, **113, 119, 434**.
Boards, **98, 100, 105**.
Boiler Packing Trade, *see* Engine and Boiler packing.
Bookbinding :
General Post Office, **429**.
Stationery Office, **437**.
Bottles, glass, **236, 237, 238, 245**.
Boxes, cardboard or of wood and cardboard, 125, 129.
Bread, Army bakeries, **423-4**.
Breeze, *see* Coke and breeze.

- Brick-earth, earth, clay, &c., **197**, 204.
 Brick and Fireclay Trades, 177, 178, 180, 181, 182, 183, 185, 186, 188, 190, 191, 192, 193, 194, **195-208**, 214, 220.
 Bridges, *see* Highways and Bridges and Roads, bridges, &c.
 Brine, **49**, 53.
 Brush-making Trade, 78, 80, 81, 83, 84, 85, 86, 88, 90, 91, 92, 93, 94, **145-56**.
 Buckets, *see* Churns, tubs, &c.
 Builders' woodwork, furniture and other wood goods, **97**, **99**, 106, 137, 141.
 Building bricks, **197**, 198, **199**, 201, 203, 205.
 Building and Contracting Trades, 177, 178, 179, 180, 181, 182, 183, 185, 186, 188, 190, 191, 192, 193, 194, **273-88**.
 Building Materials and Monumental Masonry Trades, 177-194 **234-254**.
 Building stone, 279, 285.
 Building work :
 Admiralty Civil Engineering Department, **413**.
 Local Authorities, **395**, 396, 399.
 Office of Works, **434**.
 War Office Ordnance Factories and Workshops, 419.
 Buoys and beacons, repairs, &c., **438**.
- C.**
- Cabinet-making, *see* Furniture, Cabinet-making and Upholstery Trades.
 Calcined iron ore, **39**, 44.
 Canal, Dock and Harbour Companies, 292, 294, 295, 297, 298, 300, 301, 303, 305, 307, 310, **387-402**.
 Canals and docks, **388**.
 Canals and waterways, **276**, **278**, 284, **370**, 375, **388**, 391, 395, 399.
 Cane parts for basket and wicker-work, including prepared willows, **169**, 172.
 Carborundum, **266**, 267, 270.
 Carpentry and jobbing work, 279, 284.
 Carpentry work (furniture, barrows, notice-boards, &c., mainly of wood), **370**, 375.

- Carpets, making up of, 114, 434.
 Carriage, Cart and Wagon Trades, 78, 80, 81, 82, 83, 85, 86, 88, 90, 91, 92, 93, 94, **133-143**.
 Carriages and carts for animal traction, **135**, **136**, 138, 141, 369, 374.
 Cartridge cases, metal, **419**.
 Carts, *see* Carriage, Cart and Wagon Trades.
 Casement curtains and art furnishings, **113**, 119.
 Casks and barrels, 100, 107, 129, 226, 230.
 Casks and cases for breweries and distilleries, **159**, **160**, 164.
 Casks and kegs, **159**, **160**, 164.
 Cement for building and engineering purposes, **226**, 227, 230.
 Cement Trade, 178, 180, 181, 183, 184, 185, 186, 188, 190, 191, 192, 193, 194, 200, 205, **224-32**.
 Cerements (shrouds, sidecovers, &c.), 119, **113**.
 Chair frames, *see* Sofa and chair frames.
 Chalk, **64**, **66**, 67, 71, **225**, **226**, 227, 230.
 Chests, trunks and other boxes, 100, 107, **125**, 129.
 Chevrons, armlets and badges, Army Clothing Factory, **422**.
 China clay, **64**, **66**, 67, 72.
 China stone, **64**, **66**, 67, 72.
 China and Earthenware Trades, 177, 178, 180, 181, 182, 183, 185, 186, 188, 190, 191, 192, 193, 194, **209-23**.
 Chinaware, *see* Porcelain, china-ware, &c.
 Chocolate, Naval Victualling Yards, **415**.
 Chromo-litho printing, *see* Lithographic, &c.
 Churns, tubs, buckets, &c., **159**, **160**, 164.
 Clay, 23, 26, 40, 44, **64**, **66**, 67, 72, **225**, 230.
 see also Brick-earth, earth, clay, &c.
 Clay tobacco pipes, **211**, **213**, 220.
 Cleaning, Army, **423**.
 Cloth and paper, abrasive, **266**, 267, 270.
 Coal gas and water gas, **315**, **316**, 322, 323, 327, 328.
 Coal mines, 1, 2, 4, 5, 6, 7, 9, 10, 12, 14, 15, 16, 17, 18, **19-28**.
 Coal tar, **317**, 328.

- Coal tar oils, *see* Tar oil, &c.
 Coffins, **97**, **99**, 106, 114, 119, 141, 279, 285.
 Coke and breeze, **316**, 323, 328.
 Compasses and gears, repairs, **408**.
 Constructional engineering, 276-7, 284.
 Contracting Trades, *see* Building and Contracting.
 Cooperage articles and repair work, Naval Victualling Yards, **415**.
 Coopering Trade, 78, 80, 81, 82, 83, 85, 86, 88, 90, 91, 94, **157-66**.
 Copper ore (including copper matte, regulus and precipitate), 39, 40, 44.
 Copper and steel printing, Stationery Office, **437**.
 Cordage, cables, ropes and twine, 408.
 Cork goods, **97**, **99**, 106.
 Corundum, artificial, *see* Artificial corundum, &c.
 Crates, Cases, Boxes and Trunk Trades, 100, 107, 114, 119, **123-132**.
 Creosote oil, *see* Tar oil, &c.
 Crucibles (plumbago), **211**, **213**, 220.
 Crushed, broken, &c., stone, **239**, 249.
 Crushed slag and dry slag, **239**, 249.
 Cushions, *see* Bedding, &c.
 Cutlasses, *see* Swords, cutlasses, &c.

D.

- Damp-courses, **236**, **241**, 252.
 Slates for, **57**, 61.
 Deals, battens, planks, floorings, mouldings, &c., **97**, **98**, 100, 105, 106, 125, 129, 279, 285.
 Decorators' brushes, *see* Painters' and decorators'.
 Dock railways, **388**, 391, **395**, 399.
 Docks, *see* Harbours and Docks.
 Dolomite, **64**, **65**, 70.
 Duplicators, *see* Typewriters and duplicators.

E.

- Earth, *see* Brick-earth.
 Earthenware, *see* China and earthenware and Red pottery, &c.
 Earthenware, semi-porcelain and majolica, **211**, **212**, **213**, 214, 219-20.

- Electric lighting and heating installation and repairs, **276**, 284.
 Electric lines and works, construction, repair and maintenance, **276**, **278**, 284.
 Electric power and lighting works, construction, maintenance and repair, **370**, 375.
 Electrical equipment of tramway lines, **381**, 383.
 Electrical ware, 212, **213**, 214, 219.
 Electricity Undertakings, 292, 293-4, 294, 295, 297, 298, 299, 300, 301, 303, 306, 309, 311, **332-52**.
 Admiralty, 405, **416-8**.
 General Post Office, 406, **430-1**.
 War Office, 405, 425-6.
 Embankments, *see* Sea walls and embankments.
 Emery, **266**, 267, 270.
 Emery cloth, **266**, 267, 270.
 Enamelled sanitary ware of fireclay, **197**, **199**, 205.
 Engine and Boiler Packing, &c., Trades, 178, 180, 181, 183, 185, 186, 188, 190, 191, 193, 194, **255-63**.
 Engineering, jobbing work, 279, 284.
 Envelopes, Post Office Savings Bank Department, **429**.
 Exhibition stands, theatrical scenery, &c., 106.
 Explosives, **419**.

F.

- Factories and workshops, construction, **276**, 284, **395**, 399.
 Faience, *see* Architectural terracotta and faience.
 Feather brushes, *see* Mops, &c.
 Fences, gates, hurdles, &c., **97**, **99**, 106.
 Firearms, parts of, **419**.
 Firebricks, **197**, 198, **199**, 201, 203, 205.
 Fireclay, 23, 26, **64**, **66**, 67, 72, **197**, **198**, **199**, 200, 204, 205.
 see also Brick and Fireclay Trades.
 Enamelled sanitary ware of, **197-199**, 208.
 Pipes and tubes, **197**, **199**, 203, 205.
 Retorts, **197**, **199**, 203, 205.
 Firewood, shavings, sawdust, &c., **97**, **99**, 107, 129.

Flints, **64, 66, 67, 71.**
 Floating docks, **408.**
 Floorings, *see* Deals, &c.
 Fluorspar, **39, 40, 44.**
 Fuel, manufactured, *see* Manufactured fuel.
 Furniture, Cabinet-making and upholstery Trade, **77, 78, 80, 81, 82, 83, 84, 85, 86, 88, 90, 91, 92, 93, 94, 100, 107, 111-22.**
 Furniture repairs, cabinet work, blinds, clocks, &c., repairs to, Office of Works, **434.**
 Fuses and blasting accessories, **419.**

G.

Gaiters, Army Clothing Factory, **422.**
 Ganister, *see* Sandstone and ganister.
 Gas coal, **20, 21, 22, 26.**
 Gas mains and works (other than buildings), construction, repair and maintenance, **276, 278, 284.**
 Gas undertakings, **292, 293-4, 294, 295, 297, 300, 301, 303, 305, 306, 308, 310, 312-31.**
 Gates, *see* Fences, &c.
 Gauge glasses, **246.**
 General Post Office, **292, 294, 295, 297, 300, 301, 303, 305, 307, 310, 311, 406, 426-31.**
 Electricity undertakings, **406, 430-1.**
 Printing and bookbinding establishments, **406.**
 Savings Bank Department, **429-30.**
 Telegraph and telephone service, **406, 426-9.**
 Glass bottles and jars, **236, 237, 238, 245.**
 Glass and manufactures thereof, including leaded lights, **236.**
 Glass and sand paper, **266, 270.**
 Glass Trade, **177, 178, 180, 181, 183, 185, 186, 188, 190, 191, 192, 193, 194, 234-254.**
 Glass tubing and rod, **237, 238, 246.**
 Glassware, domestic and fancy, **237, 238, 245.**
 Glazed tiles, *see under* Tiles.
 Glazes, *see* Potters' materials.
 Globes and shades (other than oil lamp chimneys), **245.**
 Government Departments, **292, 293, 294, 295, 297, 300, 301, 303, 305, 307, 308, 310, 403-39.**

Gowns and overalls, Army Clothing Factory, **422.**
 Granite, basalt, quartzite, whinstone, &c., **64, 65, 66, 67, 70.**
 Granite setts and pavement curbs, **239, 241, 249.**
 Gravel, **40, 44, 64, 66, 71.**
 Grinding wheels, **266, 270.**
 Grindstones and millstones and parts, **65, 70.**
 Gun mountings or carriages and parts, **419.**
 Guns, howitzers and parts, **419.**
 Gypsum, **39, 40, 44, 225, 226, 227, 230.**

H.

Hair felts, **236, 241, 252.**
 Hand trucks and trollies, **135, 136, 138, 141.**
 Harbours and docks, including wharves, piers and jetties, &c., **276, 278, 284, 370, 375, 388, 391, 395, 399, 413.**
 Harness, *see* Saddlery and harness.
 Hearthstones and scouring stones, **67, 72.**
 Hearth stones, *see also* Bath bricks, hearth stones, &c.
 Heating and ventilating apparatus, **279, 285.**
 Herring pickle barrels, **159, 160, 164.**
 Highways and bridges, construction, repair and renewal, **276, 278, 284, 395, 396, 399.**
 Hoists and cranes, **370, 375.**
 Horse-shoeing and smiths' work, **137, 141.**
 Horticultural implements and appliances. *see* Agricultural.
 Horticultural woodwork, **99, 107.**
 Household brooms and brushes, **146, 147, 149, 150, 153.**
 Household coal, **20, 21, 22, 26.**
 Howitzers, *see* Guns.
 Hurdles, *see* Fences, &c.
 Hydraulic lime, *see* Lime.

I.

Illuminating glassware, **237, 238, 245.**
 Invalid chairs, *see* Perambulators.
 Iron ore, **26, 39, 40, 44.**
see also Calcined iron ore.

Iron pyrites, **23, 26.**
 Iron and steel structural work, **277-8, 280.**
 Iron-stone, **23, 40.**

J.

Jars, glass, **236, 237, 238, 245.**
 Jobbing carpentry and building, &c., **137, 141.**
 Jobbing and repair work on buildings (painting, decorating, plumbing, &c.), **276, 284.**
 Joinery, manufactured, **99, 279, 285.**

K.

Keen's, Parian and similar cements, **226, 230.**
 Kegs, *see* Casks and kegs.

L.

Lamps and fittings for lighting purposes, **370, 375.**
 Land drainage works, **395, 399.**
 Laundry work :
 Air Force, **406, 432-3.**
 Army, **423.**
 Lead ore, **39, 40, 44.**
 Lenses, prisms and the like (not optical), **245.**
 Light Railways, *see* Railways and light railways, *and* Tramway and Light Railway Companies.
 Light vessels, repairs, &c., **438.**
 Lighthouses, repairs, &c., **406, 438-9.**
 Lime (including hydraulic lime), **64, 66, 72, 226, 230.**
 Limestone, **23, 26, 40, 44, 64, 65, 225, 230.**
 Lithographic, chromo-litho and photo-litho printing, Stationery Office, **437.**
 Local Authorities, **292, 293, 294, 295, 297, 298, 300, 301, 303, 305, 307, 310, 393-402.**
 Locomotives, wagons and vans, **369, 374, 388, 391.**

M.

Machine guns, *see* Automatic.
 Machinery brushes, special trade brushes, &c., **148, 153.**

Machinery glassware, **237, 238, 246.**
 Magazines and periodicals, printing of, Stationery Office, **437.**
 Mail bags and parcels post receptacles, **427.**
 Mail carts, *see* Perambulators and mail carts.
 Majolica, *see* Earthenware, &c.
 Manganese ore, **39, 44.**
 Manufactured Abrasives Trade, **178, 180, 181, 183, 186, 188, 190, 191, 192, 193, 194, 265-72.**
 Manufactured Fuel Trade, **2, 4, 5, 6, 7, 9, 10, 12, 14, 15, 16, 17, 18, 29-36.**
 Marble, monumental and dressed, *see* Monumental or dressed stone and marble.
 Marble work, **239, 249.**
 Marl, &c., **197, 204.**
See also Potters' materials.
 Matchings, **98, 100, 106.**
 Mattresses, wire, **114, 119.**
 Men's suits, coats, vests and trousers, Army Clothing Factory, **422.**
 Metal cartridge cases, **419.**
 Metallic packings, **257, 261.**
 Metalliferous mines and quarries (including oil shale mines), **2, 4, 5, 6, 7, 9, 10, 12, 14, 15, 16, 17, 18, 37-46.**
 Meters, stoves and other appliances, fitting and repairing, **318, 323, 328.**
 Mica clay, **64, 66, 72.**
 Military rifles and carbines, **419.**
 Millstones, *see* Grindstones and millstones.
 Mines and quarries, **1-18.**
 Monumental and architectural granite, **239, 241, 249.**
 Monumental and dressed stone and marble, **239, 249, 279, 285.**
 Monumental Masonry Trades, **179, 186, 234-254.**
 Moorings, laying, repairing, &c., **408.**
 Mops, pads, feather brushes, &c., **146, 148, 153.**
 Mortar, **236, 239, 249, 279, 285, 395, 399.**
 Motor omnibuses and other motor vehicles, **381, 383.**
see also Tramcars, trolley vehicles and motor omnibuses.
 Motor ships, sailing vessels and barges, **408.**
 Motor ships, war, **407.**
 Propelling machinery for, **408.**

Motor vehicles and tractors, parts of, **369, 374**.
Mouldings, *see* Deals, &c.

N.

Naphtha, **316, 317, 323, 328**.
Naval ordnance, manufacture, repair and overhaul, **411**.
Naval stores, repair and manufacture, **408**.
Newspapers (other than daily), printing of, Stationery Office, **437**.
Non-metalliferous (other than slate) quarries, 1, 2, 4, 5, 6, 7, 9, 10, 12, 14, 15, 16, 17, 18, **63-74**.

O.

Ochre, umber, &c., **39, 40, 44**.
Office fittings, *see* Shop, office, &c., fittings.
Office of Works, 406, **434-5**.
Building works and furniture workshops, 406, **434-5**.
Oil shale, **39, 44**.
Oil shale mines, *see* Metalliferous mines and quarries.
Ordnance Survey Department, production of maps, 406, **435-6**.
Overalls, *see* Gowns and overalls.
Overcoats, Army Clothing Factory, **422**.

P.

Packing cases, **125, 129, 161, 164**.
Pads, *see* Mops, &c.
Panel wood, *see* Veneers and panel wood.
Painters' and decorators' brushes, **146, 148, 149, 150, 153**.
Paper, abrasive, *see* Cloth and paper.
Paper felts, **236, 241, 252**.
Parian, *see* Porcelain, &c.
Parian cement, *see* Keen's, Parian and similar cements.
Pavement curbs, *see* Granite setts and pavement curbs.
Paving materials, **239**.
Perambulators and mail carts for children, including invalid chairs, toy perambulators and trollies, **135, 136, 138, 141**.

Permanent way :

Railway, **369, 374, 375**.
Tramway and light railways, **381, 383, 395, 399**.
Photo-litho printing, *see* Lithographic, &c.
Pipes and tubes of fireclay or stoneware, **197, 199, 203, 205**.
Pistols, *see* Revolvers and pistols.
Pitch, **316, 317, 323, 328**.
Pitprops and pitwood, **97, 98, 100, 106**.
Planks, *see* Deals, &c.
Plaster (including plaster partitions, **236, 239, 249**.
Plaster of Paris, **226, 227, 230**.
Plywood, **98, 106**.
Porcelain, chinaware and Parian, **211, 212, 214, 215, 219**.
Portable buildings, **99, 106**.
Potters' materials (glazes, marl, &c.), **211, 213, 214, 220**.
Poultry houses, *see* Agricultural and horticultural implements and appliances.
Printed books, Stationery Office, **437**.
Printing, 370, 375.
Local authorities, **395, 399**.
Post Office, 406, **429**.
Stationery Office, **437**.
Prisms, *see* Lenses, prisms, &c.
Producer gas and other gases, **315, 322, 327**.
Propellant powders and high explosives, 411, 419.
Public buildings, **276, 284, 395, 399**.
Public worship, places of, and buildings connected therewith, **276, 284**.

Q.

Quarries, *see* Mines and quarries.
Quartzite, *see* Granite, &c.
Quick-firing guns, *see* Automatic.
Quilts, *see* Bedding, &c.

R.

Railway carriages, **369, 374**.
Railway Companies, 292, 294, 295, 297, 300, 301, 330, 305, 307, 308, 309, 311, **367-378**.
Railway stations and buildings, **370, 375**.
Railway timber, **97**.

Railways and light railways, construction, repair and maintenance, **276, 278, 284**.
Red pottery, glazed tiles and other earthenware, 200, 205.
Refractory goods, **197, 199, 205**.
Revolvers and pistols, 419.
Road metal, concrete, tarred macadam, &c., 279, 285, 395, 399.
Road vehicles, **369, 374**.
Roads, bridges, footpaths, surface drains, &c., construction, repair and maintenance, Office of Works, **434**.
Roadstone and chippings, **65, 70, 71**.
Rock salt, **49, 50**.
Rolling stock, tramways and light railways, **381, 383**.
Roofing Felts Trade, 177, **234-254**.
Roofing, slates for, **57, 61**.
Roofing and street paving tiles, *see* *under* Tiles.

S.

Saddlery and harness, **370, 375**.
Saggars, *see* Stiles, &c.
Sailing vessels and barges, war, **407, 408**.
Salt mines, brine pits and salt works, 2, 4, 5, 6, 7, 9, 10, 12, 14, 15, 16, 17, 18, **47-55**.
Sand, 40, 44, **64, 66, 67, 71, 197, 204**.
Sand paper, *see* Glass and sand paper.
Sandstone and ganister, 23, 26, 40, 44, **64, 65, 66, 70, 71**.
Sanitary ware, **211, 212, 214, 219**.
Sawdust, *see* Firewood, &c.
Saw-mill products, **97, 98, 101, 105-6**.
Sawn timber, bent timber, crates, &c., 141.
Scientific glassware, **237, 238, 246**.
Scouring stones, *see* Hearthstones and scouring stones.
Sea walls, embankments and defences, **276, 278, 284, 388, 391, 395, 399**.
Sewers and sewage disposal works, **276, 278, 284, 395, 399**.
Shale, **197, 204**.
Shaving brushes, **149, 153**.
Shavings, *see* Firewood, &c.
Ships, boats, barges, lighters, &c., 279, 285, 370, 375, 388, 391, 395, 399, 407, 408.
Shirts, vests and drawers, Army Clothing Factory, **422**.
Shop, office, &c., fittings, 100, 107, 113, 119, 279, 285, 434.
Signs and sign writing, 106.
Silica bricks, **197, 199, 201**.
Silica rock or silica stone, **65, 70, 197, 198, 199, 200, 204, 205**.
Silica sand, 67.
Silicate cotton, *see* Slag wool and silicate cotton.
Slabbed tile work (hearth surrounds, &c.), **236, 239, 249**.
Slag wool and silicate cotton, **257, 261**.
Slate, *see* *also* Stone and slate.
Slate goods (mantels, chimney-pieces, &c.), 239, 249.
Slate mines and quarries, 2, 4, 5, 6, 7, 9, 10, 12, 14, 15, 16, 17, 18, **56-62**.
Slate slabs, **57, 61**.
Sleepers and fish plates, **98, 100, 106, 369, 374**.
Small arms ammunition, military, **419**.
Smiths' work, 279, 284.
see also Horse-shoeing and smiths' work.
Sofa and chair frames and other parts of furniture, **113, 119**.
Stationery Office, printing and bookbinding establishments and typewriter repair shops, 406, **436-7**.
Staves, 106.
Steam coal, **20, 21, 22, 26**.
Steam vessels, 407, 408, 438.
Steel rails, **369, 374**.
Stilts, spurs, thimbles, saggars, &c., **211, 213, 214, 220**.
Stone, artificial, *see* Artificial.
Stone and slate, dressed, **236, 239, 249**.
Street paving tiles, *see* Roofing, and street paving under Tiles.
Sulphate of ammonia, 316, 317, 323, 328.
Swords, cutlasses, bayonets and arms of other sorts (except firearms), **419**.

T.

Table salt, **49, 53**.
Tanks, armoured cars, &c., and components, **419**.
Tar, **316, 323, 328**.

Tar distillation products, **316, 323, 328.**
 Tar oil, creosote oil and other heavy coal tar oils, **316, 317, 323, 328.**
 Tar paving and other road materials, **236, 239, 249.**
 Tarpaulins, wagon covers, &c., **370, 375.**
 Tarred flax felts, **236, 241, 252.**
 Telegraph services, Post Office, 406, **426-9.**
 Telegraphic and telephonic lines and works, construction, maintenance and repair, 276, 278, 284, 370, 375.
 Telephone services, Post Office, 406, **426-9.**
 Terra-cotta, *see* Architectural terra-cotta.
 Theatrical scenery, *see* Exhibition stands, &c.
 Tie presses, *see* Trouser and tie presses.
 Tiles :
 Floor, **211, 212, 214, 219.**
 Glazed wall and hearth, **211, 212, 214, 219.**
 Roofing and street paving tiles, **197, 199, 201, 203, 205.**
 Slabbed tile work, **236, 239, 249.**
 Timber Trades, 77, 78, 80, 81, 82, 83, 85, 86, 88, 90, 91, 92, 93, 94, **95-110.**
 Tin ore (including concentrates), **39, 40, 44.**
 Tobacco pipes, clay, **211, 213, 220.**
 Toilet brushes, **146, 147-8, 150, 153.**
 Toluol, **316, 317, 323, 328.**
 Tool handles, 107.
 Tooth brushes, **149, 150, 153.**
 Torpedoes and submarine mine appliances, **419.**
 Trade brushes, **146.**
 Tramcars, trolley vehicles and motor omnibuses, 381, 383, 395, 399.
 Tramway and Light Railway Companies, 292, 294, 295, 297, 300, 301, 303, 305, 307, 310, **379-386.**
 Tramways and light railways, construction, repair and renewal, 276, 278, 284, 395, 396, 399.
 Trolley vehicles, *see* Tramcars, trolley vehicles and motor omnibuses.
 Trolleys, toy, *see* Perambulators.
 Trouser and tie presses, 119.
 Trunks, *see* Crates, &c. and Chests.
 Tubs, *see* Churns, tubs, &c.

Twine, *see* Cordage.
 Type, Stationery Office, **437.**
 Typewriters and duplicators, repair, Stationery Office, **437.**
 Tyres and axles, railway, **369, 374.**

U.

Umber, *see* Ochre, umber, &c.
 Uniform clothing, Post Office, **427.**
 Upholstery :
see also Furniture, Cabinet-making and Upholstery Trades.
 Trimmings, **113, 115, 119.**

V.

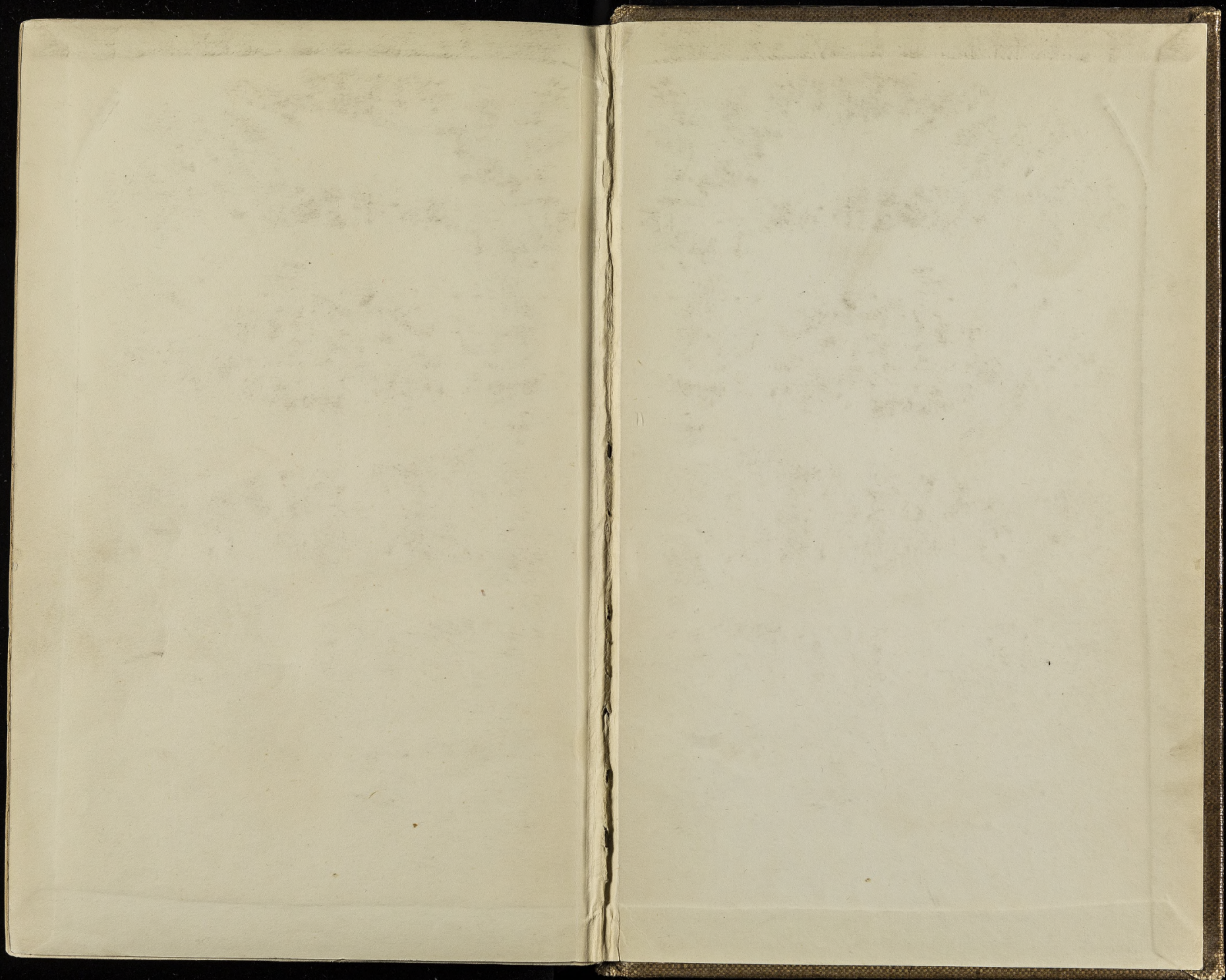
Vats, backs and other wooden vessels for storage, **159, 164.**
 Vehicles, parts of, not mechanically propelled, **136, 141.**
 Veneers and panel wood, **97, 98, 101, 106.**
 Ventilating apparatus, *see* Heating and ventilating apparatus.
 Wagon covers, *see* Tarpaulins, &c.
 Wagons, *see* Carriage, Cart and Wagon Trades.
 Wagons and trucks, railway, **369, 374.**
 War Office, 292, 294, 295, 297, 298, 300, 301, 303, 305, 307, 310, 405, **419-26.**
 Bakeries, 405, **423-4.**
 Clothing factory, 405, **422-3.**
 Electricity undertakings, 405, **425-6.**
 Laundries, 405, **423-4.**
 Ordnance factories and Ordnance Department Workshops, 405, **419-21.**
 War vessels, **407, 408.**
 Water gas, *see* Coal gas and water gas.
 Water pipes, meters and fittings, laying and fixing, **356, 360, 363.**
 Water pumping machinery and parts, construction, maintenance and repair, **370, 375.**
 Waterways, *see* Canals and waterways.
 Waterworks, construction, maintenance and repair, 276, 278, 284, 370, 375.

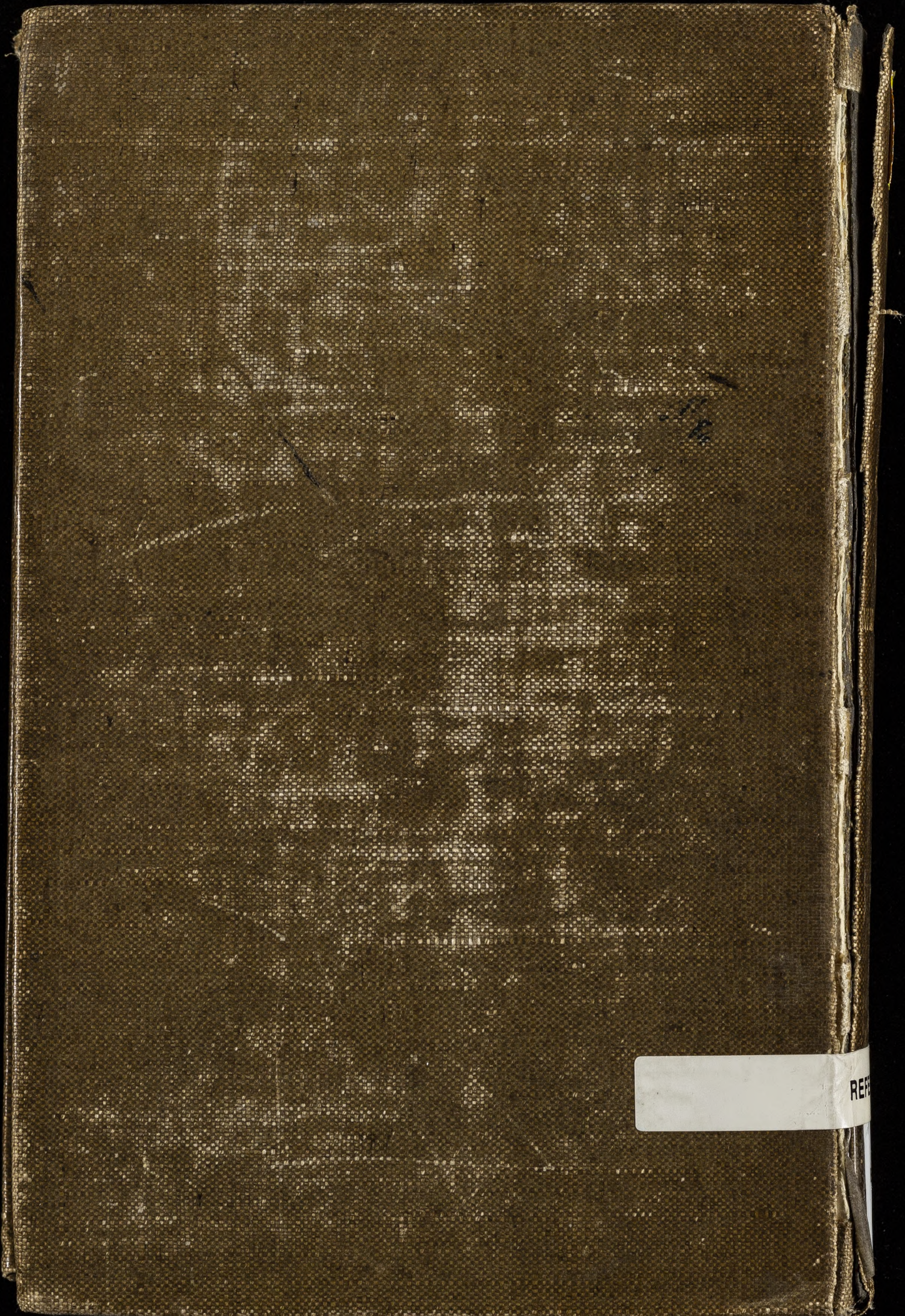
Waterworks Undertakings, 292, 294, 295, 297, 300, 301, 303, 305, 306, 310, **353-366.**
 Wheelbarrows and other vehicles, **135, 136, 138.**
 Wheels and axles, railway, **369, 374.**
 Wheelwrighting, jobbing work, 279, 284.
 Whinstone, *see* Granite, &c.
 White lime, 226, 230.
 White salt, **50.**
 Whiting, 67, 72, **226, 227, 230.**
 Wicker furniture, 114, 119, **169, 170, 172.**
 Wicker-work, *see* Basket and Wicker-work Trades.
 Wireless apparatus, **419.**
 Wireless telegraphy and telephony services, Post Office, 426.
 Wood and cardboard boxes, *see* Boxes.

Wood goods :
 for Boot and Shoe Trades, **99, 107.**
 for Textile Trades, **99, 107.**
 Wood wool, fibre, &c., **99, 107.**
 Wooden Crates, Cases, Boxes and Trunks Trade, 78, 80, 81, 82, 83, 84, 85, 86, 88, 90, 91, 92, 93, 94.
 Woodware, domestic, 106.
 Working class dwellings, construction, 276, 284, 395, 396.
 Workshops, *see* Factories and workshops.

Z.

Zinc ore, **39, 40, 44.**





RE