

## INDEX.

NOTE.—Figures in heavy type relate to the principal discussion of the products or processes referred to.

### A.

Accoutrements and ornaments, **184**, 190.  
Accumulators, 229, 254, 255, **259**, 267, 282.  
Acid pig iron, *see* Hematite.  
Acid steel, 41, 167.  
Adzes, *see* Axes, hatchets, adzes and matchets.  
Aeroplanes, engines for, 271, **313**, 321.  
Aeroplanes and parts, 263, 275, **311**, **313**, 316, 317, 321.  
Agricultural and horticultural implements and tools, 158, **161**, 164, 168, 174, 177.  
Agricultural machinery and parts, 229, 230, 231, **232-3**, 272.  
Aircraft, *see* Motors, Cycles and Aircraft.  
Air-filtering machines, **247**, 272.  
Air and gas compressors and exhausters, **247**, 251, 272.  
Airguns and rifles, **195**, 196, 197.  
Aluminium, 263, 275, 347, 371, **381-2**, 387, 399.  
Anchors, chains, nails, screws and rivets, 2, 3, **6**, 7, 8, 9, 11, 12, 14, 16, 18, 20, 21, 24, 63, **111-122**.  
Antimony, bismuth, cobalt, magnesium, mercury, &c., and manufactures thereof, **386**, 400.  
Anvils and vices, 168.  
Arc lamps, searchlights, &c., **260**, 261, 281.  
Axes, hatchets, adzes and matchets, 154, **161**, 164, 168.  
Axles, 62.

### B.

Badges, *see* Medals, badges and regalia.  
Bag and envelope making machines, **243**, 244, 273.  
Ball bearings, roller bearings, steel rollers and steel balls, **249**, 251, 265, 274.  
Bars, *see* Sheet bars, tinplate bars, blocks, &c.

Basic pig iron, **29**, 30, 32, 33, 56.  
Basic slag, 31, 37, 63.  
Basic steel, 41, 167.  
Baths, cast iron, &c., 78, **79**, 81, 85, 133, 141.  
Batteries, electric, 282.  
Bayonets, *see* Swords, cutlasses, &c.  
Beams, *see* Girders, beams, joists and pillars.  
Bedsteads and parts, **127**, **128-9**, 134, 136, 139, 409, 414;  
Bell apparatus, electric, **260**, 261, 282.  
Bicycles, *see* Cycles.  
Binders, *see* Reapers and binders.  
Black plates, 61, **68**, 69, 69-70, 71, 74.  
Black sheets, 61, 68, 74.  
Blacksmithing, 3, **6**, 7, 8, 9, 11, 12, 14, 16, 18, 20, 21, 24, **171-180**.  
Blast furnaces, 3, 4, 6, 7, 9, 11, 12, 14, 16, 18, 19, 20, 21, 22, 23, 24, **27-34**.  
Machinery, **249**, 274.  
Bleaching and dyeing machinery, **245**, 246, 274.  
Blocks, ingots, bars, slabs, etc. :  
Aluminium, **382**, 399.  
Brass, 414.  
Copper, **363**, **364**, **365**, 397, 398.  
Iron and steel, **36**, 39, 41, **42**, 43, **44**, 45, 48, 51, 53, 60, 61, 162, 163, 168.  
Tin, **377-8**, 399.  
Bobbins, **245**, 274.  
Boilers and boiler-house plant and parts, 229, 230, 231, **233-8**, 271-2.  
Boilers, marine, **242**, 272.  
Boilers, washing and cooking, cast iron, **79**, 81, 84, 133, 141.  
Bolts, nuts and screws, **113**, 116, 119.  
Bookbinding machines, **243**, 244, 273.  
Boot and shoe making machines, **247**, 251, 272.  
Boxes, containers, &c., of tinplate, 129, 135, 139.  
Brands, *see* Stamps, marks, dies and brands, 168.  
Brass, *see* Copper and Brass.

Brass manufacturers, *see* Finished Brass.  
 Brass nails, *see under* Nails.  
 Brass wire, *see under* Wire.  
 Brewing and distilling machines, **247**, 272.  
 Brick-making machines, **247**, 272.  
 Buckles, **183**, **184**, 190.  
 Builders' and cabinet-makers' goods, **408**, 410, 414.  
 Builders' ironmongery and hardware, 63, 132, 141, 177.  
 Building and contracting, 252, 253.  
 Buttons and studs, **183**, **184-5**, 186; *see also* Needles, pins, fish-hooks and buttons.

## C.

Cabinet-makers' goods, *see* Builders' and Cabinet-makers' goods.  
 Cable-making machines, **247**, 272.  
 Cables, insulated, *see* Insulated wires and cables.  
 Cables and ropes, wire, 63, **99**, **100**, 103, 105, 107.  
 Carbons, electric, **260**, 261, 282.  
 Card-clothing, &c., **245**, 274.  
 Cardboard-box making machines, **243**, 244, 273.  
 Carpenters' and joiners' tools, **161**, 168.  
 Carriage and harness goods, brass, **408**, 414.  
 Carriages, carts and wagons, 309.  
 Cash and deed boxes, &c., 129, **130**, 131, 132, 135, 136, 140.  
 Castings :  
   Aluminium, 263, 275.  
   Brass or copper, 263, 275, 414.  
   Light, **76-88**.  
   Other iron, 31, 36, 39, 49, 50, 56, 60, 61, 80, 85, 134, 141, 263, 274, 282.  
   Steel, **36**, 39, 41, 42, **46**, 47, 53, 60, 61, 162, 168, 263, 274.  
 Celluloid, erinoid, etc., buttons and studs, **184**, **185**, 186, 190.  
 Cement, crushed, *see* slag and cement.  
 Centrifugal drying machines, **247**, 251, 272.  
 Chain cables, **113**, 116, 119.  
 Chains, *see* Anchors, chains, nails, screws and rivets.  
 Charcoal iron, 33.

Chemical machines, *see* Gas and chemical machines.  
 Chronometers, *see* Time-recording clocks, &c.  
 Chucks and other workholders, **239**, 241, 273.  
 Cigarette-making machines, *see* Tobacco and cigarette-making machines.  
 Cinder, slag, &c., 31, **36**, 56, 63.  
 Cisterns, *see* Tanks, cisterns, &c.  
 Clocks :  
   *see also* Watches and clocks.  
   Cases, **433-4**, 438.  
 Coal cutters, **248**, 251, 252, 273.  
 Coffin furniture, **408**, 414.  
 Colliery wagons, trams and tubs, **328**, 335.  
 Condensers, steam, **236**.  
   Electric, static, power, **260**, 282.  
 Conduits, poles and fittings, electrical, **261**, 282.  
 Constructional engineering, **252-4**, **262**.  
 Control and switch-gear, **256**, 257, 267, 281.  
 Converters and transformers, **256**, 257, 281.  
 Conveyors, telfers and transporters, **247**, 251, 272.  
 Cooking apparatus, *see* Heating and cooking apparatus.  
 Cooking boilers, *see* Boilers.  
 Copper and brass manufactures, 85, 99, 120, 168, 263, 275, 282, 373, 398, 414.  
 Copper and Brass, smelting, rolling and casting, 341-59, **362-9**.  
 Copper sulphate, **364**.  
 Copper wire, *see under* Wire.  
 Corset steels and busks, **184**, 190.  
 Cranes, hoists and other lifting machinery, 231, **247**, 250, 251, 252, 272.  
 Crochet hooks, **183**, **184**, 190.  
 Crucible steel, 41, 167.  
 Cutlasses, *see* Swords, cutlasses, &c.  
 Cutlery, 3, **6**, 7, 8, 9, 11, 12, 14, 16, 18, 20, 24, **145-56**, 421, 427.  
 Cycles and tricycles, not mechanically propelled :  
   Complete, 309, **311**, **312**, 317, 320.  
   Parts and accessories for, **311**, **313**, 315-6, 317, 321.  
   Repair work, 314, 322.  
   Motor, *see* Motor cars and cycles.

## D.

Dairy machinery, **247**, 251, 272.  
 Deed boxes, *see* Cash and deed boxes, &c.  
 Diecasting machines, *see* Founding and diecasting machines.  
 Die castings, 414.  
 Dies, *see* Stamps, marks, dies and brands, 168.  
 Distilling machinery, *see* Brewing and distilling machinery.  
 Drilling machines, **239**, 241, 273.  
 Drop forgings, &c., 37, 63.  
 Dyeing machinery, *see* Bleaching and dyeing machinery.

## E.

Electric generators, **256**, 257, 267, 279, 281.  
 Electric heating apparatus, *see under* Heating and cooking apparatus.  
 Electric lamps and parts, 255, **260**, 261, 281.  
 Electric lighting accessories and fittings, 85, **260**, 261, **408**, 414.  
 Electric motors, **256**, 257, 267, 279, 281.  
 Electric steel, 41, 167.  
 Electrical conduits, poles and fittings, 90.  
 Electrical engineering, 206, 208, 209, 210, 212, 213, 214, 216, 217, 219, 220, 222, 223, **225-86**, 314, 321.  
 Electrical instruments, 255, **260**, 261, 282.  
 Electrical machinery, 229, 254, **255-7**, 281.  
 Electro-medical apparatus, **260**, 261, 282.  
 Electro-plated goods, 148, 150.  
 Enamelled signs and tablets, **127**, **130**, 135, 140.  
 Engineering trades, 205, **224-286**.  
 Engineers', mechanics' and plumbers' goods, **408**, 410, 414.  
 Engineers' tools, **161**, 164, 168.  
 Engines and boiler-house plant, 229, 230, **233-8**.  
 Envelope-making machines, *see* Bag and envelope-making machines.

## F.

Fancy articles, 190.  
 Fasteners, *see* Hooks, hinges, &c.  
 Fences, hurdles, gates, &c., 63, **173**, 175.  
 Fencing material of cast or wrought iron, 141, **173**, 175, 177.  
 Fencing wire, **100**, 105, 107.  
 Ferro-alloys, **38-40**, 56, 63.  
 Ferro-manganese, **29**, 32, 53, 56.  
 Ferro-silicon, **29**, 32.  
 Ferro-tungsten, 29, 63.  
 Ferro-vanadium, 29.  
 Files and rasps, 154, **161**, 163, 164, 168.  
 Filter presses, **247**, 251, 272.  
 Finished brass, 78, 341-59, 366, 401, **405-16**.  
 Finishing machinery, *see* Printing and finishing machinery.  
 Fire extinguishers, sprayers, &c., 132, 135, 140, 414.  
 Firearms :  
   Military rifles and carbines, air-guns, revolvers, swords, &c., **195**, 196, 197, 200.  
   Revolvers and pistols, **195**, 196, 197.  
   Sporting guns, carbines and rifles, **195**, 196, 197, 200.  
   Tubes, barrels and other parts and accessories of, **195**, 196, 200.  
 Fishing tackle and fish-hooks, **183**, **184**, 190.  
 Fittings for tubes and pipes :  
   Cast, **36**, 40, 49, 50, 62, **90**, 92.  
   Wrought, 62, 90, 92.  
 Floating docks and stages, 290, **291**, 292, 297, 303.  
 Foil :  
   Lead, **374**, 376, 399.  
   Tin, **378**, 399.  
 Food preparation machines, **247**, 272.  
 Forge and foundry iron, **29**, 30, 32, 56.  
 Forgings :  
   *see also* Stampings and forgings.  
   Brass, 414.  
   Iron, **36**, 39, 49, 50, 60, 61, 263, 275.  
   Steel, **36**, 39, **46**, 47, 60, 61, 162, 168, 263, 275.  
 Forks, *see* Spoons and forks.  
 Founding and diecasting machines, **247**, 273.  
 Frost cogs, studs and nails, **113**, 119.

## G.

- Galvanized hollow-ware, 379.  
Galvanized sheets, 27, **36**, 39, 44-5, 49-50, 50, 51, 60, 61, 69, 74, 125, 379.  
Galvanized tanks and hollow-ware, 63.  
Gas and chemical machines, **247**, 273.  
Gas compressors and exhausters, *see* Air and gas.  
Gas engines, **234**, 237, 271, 279.  
Gas lighting appliances, **78**, **79**.  
Gas meters, **78**, **79**, 406, 408, 409, 414.  
Gas pipes, *see under* Pipes.  
Gates, *see* Fences, hurdles, gates, &c.  
Gauges, 168.  
Gems, stones, &c., **419**, **420**, 421, 427.  
Girders, beams, joists and pillars, **36**, 39, 43, **44**, 45, 51, 60, 61.  
Glass working machines, **247**, 251, 252, 273.  
Gold :  
  Leaf, **392**, 394, 400.  
  Manufactures, **392**, 394, 400.  
Gold and silver refining, 341-59, **390-6**, 400.  
Grain milling machines, **248**, 251, 252, 273.  
Gramophone needles, **184**, 190.  
Grapnels of iron or steel, **113**, 116, 119.  
Grass and lawn mowers, **232**, 233, 272.  
Grates, ranges and stoves : 125, 126.  
  Cast iron, 78, 79, 81, 84, 125, 126, 133, 141.  
  Sheet metal, 132, 132-3, 135, 140.  
Grinding machines, **239**, 241, 273.  
Gun mountings and carriages, **250**, 274, 283.  
Guns, howitzers, mortars, &c., **250**, 274.  
Gutters, &c., *see under* Pipes.

## H.

- Hair pins, curlers and wavers, **183**, **184**, 190.  
Hardware, hollow-ware, and bedsteads, 2, 3, 4, **6**, 7, 8, 9, 11, 12, 14, 16, 18, 20, 21, 24, 78, 80, 85, 114, 120, **123-44**.  
Harness goods, *see* Carriage and harness goods.  
Harrows, *see* Ploughs and harrows.

- Hatchets, *see* Axes, hatchets, adzes and matchets.  
Healds, *see* Reeds and healds.  
Hearth furniture and art metal work, **128**, 135, 139.  
Heating and cooking apparatus : **78**, **79**, 81, 84, 225.  
  Electrical, 78, **260**, 282.  
Heating and ventilating plant, **248**, 273.  
Heavy oil engines, **234**, 237, 271, 279.  
Heel tips, boot protectors, &c., **113**, 120.  
Hematite, **29**, 30, 32, 56.  
Hinges, *see* Hooks, hinges, &c.  
Hoists, *see* Cranes, hoists and other lifting machinery.  
Hollow-ware, Iron and steel, **127**, **130-2**, 135, 136, 140 ;  
  Aluminium, **382**, 399.  
Hooks and eyes, &c., **183**, **184**, 190.  
Hooks, hinges, tackle and fasteners, 113, 120.  
Hoops, baling and barrel, 39, 43, 45, 48, 60, 61.  
Hoops and strips, **36**, 39, 43, **44**, 45, 48, 51, 60, 61.  
Horn and bone buttons and studs, **184**, **185**, 186, 190.  
Horse shoes and horse shoeing, **173**, 174, 177.  
Horticultural implements and tools, *see* Agricultural and horticultural implements and tools.  
Hosiery and knitting machines, **245**, 246, 274.  
Hosiery (latch) needles, **184**, 190.  
Howitzers, *see* Guns, howitzers, mortars, &c.  
Hurdles, *see* Fences, hurdles and gates.  
Hydraulic engines, **234**.  
Hydraulic machinery and parts, 231, 236, **248**, 250, 251, 271, 273.

## I.

- Implements, *see* Tools and implements.  
Incandescent electric lamps, **260**, 261, 281.  
Ingots, *see* Blocks, &c.  
Insulated wires and cables, 229, 254, **257-8**, 267.  
Insulating materials and accessories of mica, ebonite and similar materials, **261**, 282.

- Internal combustion engines and parts, 231, **234**, 236, **242**, 271, 272.  
Iron and steel :  
  Semi-manufactured, 26, 263, 275.  
  Smelting, rolling and founding, 2, 3, 4, 6, 7, 9, 11, 12, 14, 16, 18, 19, 20, 21, 22, 23, 24, 27, **34-53**, 78.  
  Structural work, **38**, 63, 231, 232, 233, 241, 244, 252-3, 264-5, 276.  
  Wrought iron, **47-8**.  
Iron and Steel trades, **1-66**.

## J.

- Jacquard cards, **245**, 274.  
Jewellery, gold, silver and electro-plate, 341-59, **418-30**.  
Joiners' tools, *see* Carpenters' and joiners' tools.  
Joists, *see* Girders, beams, joists and pillars.

## K.

- Keys, *see* Locks, latches and keys.  
Knitting machines, *see* Hosiery and knitting machines.  
Knives, machine, *see* Machine knives.  
Knives (other than machine knives), **147**, 148-9, 150, 154, 168.  
Knives and blades, electro-plate or other metals, **420**, 426.

## L.

- Lace and net machinery, **245**, 246, 274.  
Lamps and fittings, brass, **408**, 414.  
Lamps, lanterns, &c., 132, 134, 135, 140.  
Latches, *see* Locks, latches and keys.  
Lathes, **239**, 240, 241, 273.  
Laundry machines, **248**, 273.  
Lawn mowers, *see* Grass and lawn mowers.  
Lead : 371, 372, **373-6**, 387, 399.  
Lead, tin, zinc and other metals, smelting, rolling and casting, 341-59, **369-89**.  
Leaded lights, 63.

- Leather working machines, *see* Tanning and leather working machines.  
Letterpress machines, *see* Newspaper, letterpress and lithographic machines.  
Lifting machinery, *see* Cranes, hoists and other lifting machinery.  
Lifts, &c., and parts, 231.  
Light castings, trade, 76-88.  
Light oil engines, *see* Petrol and light oil engines.  
Lighting accessories, 255.  
Lithographic machines, *see* Newspaper, letterpress and lithographic machines.  
Locks, latches and keys, **127-8**, 135, 139 ;  
  *see also* Hardware, hollow-ware and bedsteads.  
Locomotives (rail) and parts, 231, **235**, 236, 238, 271.

## M.

- Machine knives and shear blades, 168 ;  
Machine tools, 162, 168, 229, 230, 231, **239-41**, 273.  
Machinery and accessories and parts, 162, 168, 231, 283, 330, 335.  
Magnetos, ignition, **256**, 257, 281.  
Marble work, *see* Slate, tile and marble work.  
Marine boilers, **242**, 272.  
Marine engineering, 229, 230, **241-3**, 288.  
Mattresses, wire, 101, 108, 125, **128**, 136, 139.  
Mechanical engineering, 205, 206, 207, 208, 209, 210, 212, 214, 216, 217, 218, 219, 220, 222, 223, **225-79**, 314, 321.  
Mechanical power transmission machines, **248**, 273.  
Medals, badges and regalia, **419**, **420**, 422, 427.  
Metal boxes and containers, **127**, **129-30**, 135, 139 ;  
Metal buttons and studs, **183**, **184-5**, 186, 190.  
Metallic furniture for offices and hospitals, 132, 135, 136, 140.  
Meters :  
  Electric, **260**, 261, 282.  
  Gas, **78-79**, 406, 408, 409, 414.  
Milling machines, **239**, 241, 273.

Miniature and cadet rifles and carbines, **195**, 196, 197.  
 Mining machinery and parts, 231, **248**, 251, 252, 273.  
 Mortars, *see* Guns, howitzers, mortars, &c.  
 Mother-of-pearl buttons, **184**, **185**, 186, 190.  
 Motor bodies, 309, 310, **311**, **312**, 315, 317, 320.  
 Motor cars and cycles :  
   Bearings, ball, roller, &c., 4, **311**, **312**, 315, 317, 320.  
   Brass fittings for, **408**, 414.  
   Chains, transmission, **311**, **312**, 315, 317, 320.  
   Chassis, complete, **311**, **312**, 317, 320.  
   Complete, **311**, **312**, 314-5, 317, 320, 330, 335.  
   Engines for, **233**, 236, 271, **311**, **312**, 315, 317, 320.  
   Parts and accessories for, 263, 275, 283, **311**, **312**, **313**, 315-6, 317, 321.  
   Repair work, 314, 322.  
   Starting and lighting apparatus for, 255, **261**, 282.  
   Touring and commercial cars, 263, 275.  
 Motors, cycles and aircraft, 205, 206, 208, 209, 210, 211, 212, 214, 216, 217, 218, 219, 220, 222, 223, 225, **307-25**.  
 Motor ships, 290, **291**, **292**, **293**, **295**, **296**, **297**, 301, 302, 303.

## N.

Nails :  
   *see also* Anchors, chains, nails, screws and rivets.  
   Brass or copper, **113**.  
   Iron or steel, **113**, 114.  
   Wire, 114, 119.  
 Nails and staples, wire, **100**, 103, 105, 107.  
 Needles, **183**, **184**, 190.  
 Needles, pins, fish-hooks and buttons, 3, 6, 7, 8, 9, 11, 12, 14, 16, 18, 20, 24, **181-192**.  
 Net machinery, *see* Lace and net machinery.  
 Netting, wire, **100**, 103, 105, 107.  
 Newspaper, letterpress and lithographic machines, **243**, 244.

Nickel and nickel alloys, 371, **383-4**, 387, 397, 399, 400.  
 Nickel manufactures, 347.  
 Nickel oxide, 383.  
 Non-ferrous metal trades, **341-359**.  
 Non-ferrous metals, manufactures of, 63, 80, 85, 133, 141, 314, 322.

## O.

Oil engines, *see* Heavy oil engines, Petrol and light oil engines.  
 Ordnance, 231, **250**, 251, 252, 274, 283.

## P.

Packing machines, **248**, 251, 273.  
 Paper-making machines, **248**, 251, 252, 273.  
 Petrol and light oil engines, **234**, 237, 271, 279.  
 Pewter ware, 140.  
 Pig iron, **28-30**, 56.  
 Pig lead, 371, 372, **373-4**, **375**, 376, 397, 399.  
 Pins, **183**, **184**, 190 ;  
   *see also* Needles, pins, fish-hooks and buttons.  
 Pipes :  
   Cast, **36**, 40, 49, 50, 62.  
   Fittings for, 80, 85.  
   Gas and water, 40, 80, 85.  
   Gutters, rain-water and soil pipes and fittings, 40, **79**, 85.  
   Lead, **374**, 376, 399.  
   Wrought, 62.  
 Pistols, *see* Revolvers and Pistols *under* Firearms.  
 Planing and shaping machines, **239**, 241, 273.  
 Planters and seeders, **232**, 233, 272.  
 Plates and sheets, &c. :  
   Iron and steel, not coated, **36**, 39, 43, **44-5**, 46, 51, 60, 61.  
   Copper, **363**, **364**, **365**.  
   *see also* Black plates and Black sheets.  
 Platinum : **391**, **392**, 394 ;  
   *see also* Jewellery, &c.  
   Dental, and alloys, **392**, 401.  
 Ploughs and harrows, 158, **232**, 233, 272.

Pneumatic tools, **248**, 251, 252, 273.  
 Power and lighting cables, 255, **258**.  
 Power and lighting lines or works, work on, **262**, 283.  
 Presses, punching and shearing machines, **239**, 241, 273.  
 Primary batteries, 255, **260**, 261.  
 Printing, bookbinding, &c., machinery, 229, 230, **243-4**, 273.  
 Printing and finishing machinery, textile. **245**, 246, 274.  
 Puddled iron, **47-8**.  
 Pumping machinery, **234**, 237, 271.  
 Pumps, **248**, 251, 252, 273.  
 Punching machines, *see* Presses, punching and shearing machines.

## R.

Railway carriages and wagons, 206, 208, 209, 210, 212, 214, 216, 217, 219, 220, 222, 223, 263, 275, **326-37**.  
   Wheels and axles, **328**, **329**, 331, 334, 335.  
 Railways and tramways :  
   Carriage fittings, brass, **408**, 414.  
   Electric motors, **256**, 257, 281.  
   Equipment and plant, 231, **250**, 252, 274, 330, 335.  
   Material, **36**, 39-40, 43, **45**, 46, 47, 62.  
 Rain-water pipes, *see* Gutters, rain-water and soil pipes, *under* Pipes.  
 Ranges, *see* Grates, ranges and stoves.  
 Rasps, *see* Files and rasps.  
 Razors, **147**, 148-9, 150, 154.  
 Reapers and binders, **232**, 233, 272.  
 Reeds and healds, **245**, 274.  
 Refuse and sewage disposal machines, **249**, 273.  
 Revolvers, *see under* Firearms.  
 Rifles, *see* Airguns and rifles, *under* Firearms.  
 Rivets, *see* Anchors, chains, nails, screws and rivets.  
 Road-making machinery, **249**, 273.  
 Road vehicles, other than motor cars, 263, 275.  
 Rods :  
   Brass and other alloys, **365**, 367, 398.  
   Copper, **365**, 367, 398.  
   Wire, **36**, 39, 43, 46, 51, 60, 61, 101, 108.  
 Ropes, *see* Cables and ropes.  
 Rolling mill machinery, 271.  
 Rubber machinery, **249**, 274.

## S.

Safes, **127-8**, 135, 136, 139 ;  
   *see also* Hardware, hollow-ware and bedsteads.  
 Sailing ships, 290, **291**, **292**, **293**, **294**, **295**, **296**, 297, 302, 303.  
 Sanitary appliances, **78**, **79**, 84, 141, 225.  
 Saws, saw blades, and machine knives, **161**, 164, 168.  
 Scissors and shears, **147**, 148-9, 150, 154.  
 Scrap and waste :  
   Brass and alloys, **366**, **408**, 410, 414.  
   Copper and scale, **366**.  
   Iron and steel, **36**, **50-1**, 52, 63, 69, 74, 91, 95, 114, 120, 140, 275, 283, 401.  
 Screws and nuts of brass or copper, **113**, 116, 120 ;  
   *see also* Anchors, chains, nails, screws and rivets.  
 Searchlights, *see* Arc lamps, searchlights, &c.  
 Seeders, *see* Planters and seeders.  
 Sewage disposal machines, *see* Refuse and sewage disposal machines.  
 Shear blades, *see* Machine knives and shear blades.  
 Shearing machines, *see* Presses, punching and shearing machines.  
 Shears, *see* Scissors and shears.  
 Sheet bars, **36**, 39, 42, 51, 61.  
 Sheet lead, **374**, 375, 376, 397, 399.  
 Sheet metal work, 129, 132, 134, 135, 140.  
 Sheets, strips, circles, etc. :  
   Brass, **363**, **364**, **365**, 397, 398.  
   Copper, 397, 398.  
 Shipbuilding, 206, 207, 208, 209, 210, 211, 212, 213, 214, 216, 217, 219, 220, 222, 223, 226, **287-306**.  
 Ships' fittings, **291**, 298, 303.  
 Shovels, *see* Spades and shovels.  
 Shuttles, **245**, 274.  
 Silver :  
   *see also* Gold and silver refining.  
   Manufactures, **392**, 394, 400.  
   Refined, **392**, 397, 400.

Slabs, *see* Blocks, &c.  
 Slag and cement, crushed, 31, 56.  
 Small arms, 3, 5, 6, 7, 8, 9, 11, 12, 14, 16, 18, 20, 24, **193-202**.  
 Ammunition, 195, 200.  
 Smallwares, metal, **183, 184**, 190.  
 Soil pipes, *see* Gutters, rain-water and soil pipes, *under* Pipes.  
 Solder, 372, 378, 399.  
 Spades and shovels, **161**, 164, 168.  
 Spiegeleisen, **29**, 32, 56.  
 Spinning and twisting machinery, **245**, 246, 274.  
 Spoons and forks, electro-plate or other metals, 148, 150, **420**, 423, 426.  
 Sporting guns, etc., *see under* Fire-arms.  
 Springs, 37, 62, 112, **113**, 119.  
 Stampings and forgings, 132, 134, 140.  
 Stamps, marks, dies and brands, 168.  
 Staples, *see* Nails and staples.  
 Steam engines and parts, 231, **234**, 236, 237, **242**, 271, 272, 279, 283.  
 Steam rollers, *see* Tractors, steam rollers and parts.  
 Steamships, 290, **291**, **292**, **293**, **294**, **295**, **296**, 297, 301, 302, 303.  
 Steel, *see* Iron and Steel.  
 Steel works, blast furnace, &c., machinery, **249**, 274.  
 Steels, special, 36, 39, 51, 60, 61, 263, 270, 275.  
 Stoves, *see* Grates, ranges and stoves.  
 Strips, *see* Sheets, strips, &c.  
 Studs, *see* Buttons and studs.  
 Sugar-making and refining machines, **249**, 251, 252, 274.  
 Switchboards, **260**, 261, 267, 282.  
 Switch-gear machinery, *see* Control and switch-gear.  
 Swords, cutlasses, bayonets and other arms, not firearms, **195**, 196, 197.

## T.

Tackle, *see* Hooks, hinges, &c.  
 Tanks, cisterns, &c., 78, **79**, 81, 84, 130, 133, 141, 263, 275, 283.  
 Tanning and leather-working machines, **249**, 274.

Telegraph apparatus, &c., 255, **260**, 261, 281.  
 Installation of, **262**, 283.  
 Telegraph and telephone lines and cables, work on, **262**, 283.  
 Telegraph and telephone wires and cables, 255, **258**, 281.  
 Telephone apparatus and plant, installation of, 255, **260**, 261, **262**, **267**, **281**, 283.  
 Telfers, *see* Conveyers, telfers and transporters.  
 Terne plates and sheets, **68**, 69, 71, 74.  
 Textile machinery and parts, 229, 230, 231, **244-6**, 274.  
 Thermionic valves, *see* Wireless apparatus and thermionic valves.  
 Threshers, **232**, 233, 272.  
 Tin : 371, 372, **376-8**, 387, 399 ; *see also* Lead, tin, zinc and other metals.  
 Manufactures, 372, **378**, 399.  
 Unwrought, 372.  
 Tinned and terne sheets, **68**, 69, 71, 74.  
 Tinplate, 3, **5**, **6**, 7, 8, 9, 11, 12, 14, 16, 18, 19, 20, 21, 22, 23, 24, 68, 69, 70-1, 74, **67-75**.  
 Tinplate bars, **36**, 39, 42, 51, 60, 61.  
 Tobacco and cigarette-making machines, **249**, 274.  
 Tools and implements, 3, **6**, 7, 8, 9, 11, 12, 14, 16, 18, 20, 21, 24, 63, 148, 150, **157-70**, 263, 275, 282.  
 Tractors, steam rollers and parts, 231, **235**, 236, 237, 238, 271.  
 Tramcars, complete and parts, 263, 275, **328**, 335.  
 Tramways, *see* Railways and tramways.  
 Transformers, *see* Converters and Transformers.  
 Transmission apparatus and plant, 255.  
 Transporters, *see* Conveyers, telfers and transporters.  
 Tricycles, *see* Cycles and tricycles not mechanically propelled.  
 Tube-making machines, *see* Wire and tube-making machines.  
 Tubes :  
 Brass and other alloys, **365**, 367, 398.  
 Cased, 406, 407, 408, 409.  
 Cast, **36**, 40, 49, 50, 62.

Tubes—*continued*.  
 Close-joint, 406, 407, 408.  
 Copper, **365**, 367, 398.  
 Iron and steel, 3, **6**, 7, 8, 9, 11, 12, 14, 16, 18, 19, 20, 21, 22, 23, 24, **89-96**, 401, 408, 409.  
 Wrought, 62.  
 Tungsten, **386**, 400.  
 Twisting machinery, *see* Spinning and twisting machinery.  
 Typesetting and printing machines, **243**, 244, 273.

## U.

Uninsulated electric wire, **100**, 105, 107.

## V.

Ventilating appliances and plant, **78**, **79**, 84, 225.  
 Vices, *see* Anvils and Vices.

## W.

Wagons, *see* Carriages, carts and wagons.  
 War vessels, 290, **291**, **292**, **294**, **296**, 297, 301, 302.  
 Washing boilers, *see* Boilers.  
 Watch cases : **433-4**, 438.  
 Gold, 421, 422, 427.  
 Platinum, 421, 427.  
 Watches and clocks, 342-59, **431-41**.  
 Water appliances, **78**, **79**, 84.  
 Water engines and parts, 231, **235**, 237, 271, 279.  
 Water pipes, *see* Gas and water pipes, *under* Pipes.  
 Weaving machinery, **245**, 246, 274.  
 Weighing machines, **249**, 251, 274.  
 Welding machines, **249**, 274.  
 White lead, 372, **374**, **375**, 376, 397, 399.  
 White metal alloys, 371, 372, **385-6**, 387, 397, 400.

Winding machinery, **234**, 237, 271.  
 Wire :

Brass, **99**, **100-1**, 105, 106, 107, 362, **365**, 367, 398.  
 Manufactures of, **99**, **101**, 102, 107.  
 Copper, **99**, **100-1**, 105, 106, 107, 362, **365**, 367, 398.  
 Manufactures of, **99**, **101**, 102, 107.  
 Insulated, *see* Insulated wires and cables.  
 Iron and steel wire : **99**, **100**, 103, 105, 106, 107, 379.  
 Manufactures of, **99**, **100**, 101, 103, 105, 107.

Wire drawing, 3, **6**, 7, 8, 9, 11, 12, 14, 16, 18, 19, 20, 21, 22, 23, 24, **97-110**.

Wire manufactures, 141.

Wire mattresses, *see under* Mattresses.

Wire nails, *see under* Nails.

Wire rods, *see under* Rods.

Wire and tube-making machines, **249**, 274.

Wireless apparatus and thermionic valves, 255, **260**, 261, 262, 267, 281, 282, 314, 321.

Wood patterns, 263, 275.

Wood-working machines, **249**, 251, 274.

## X.

X-ray apparatus, **260**, 282.

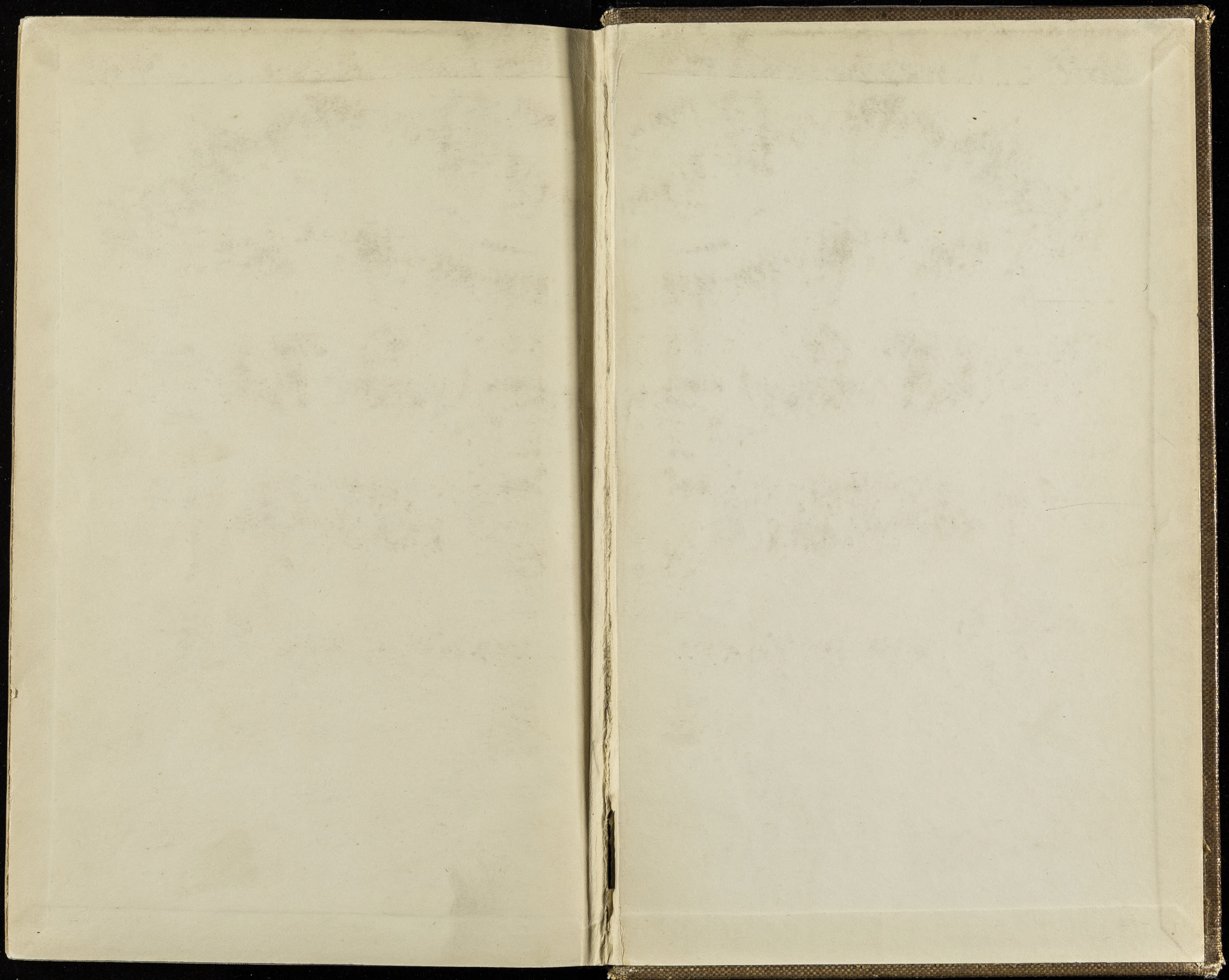
## Z.

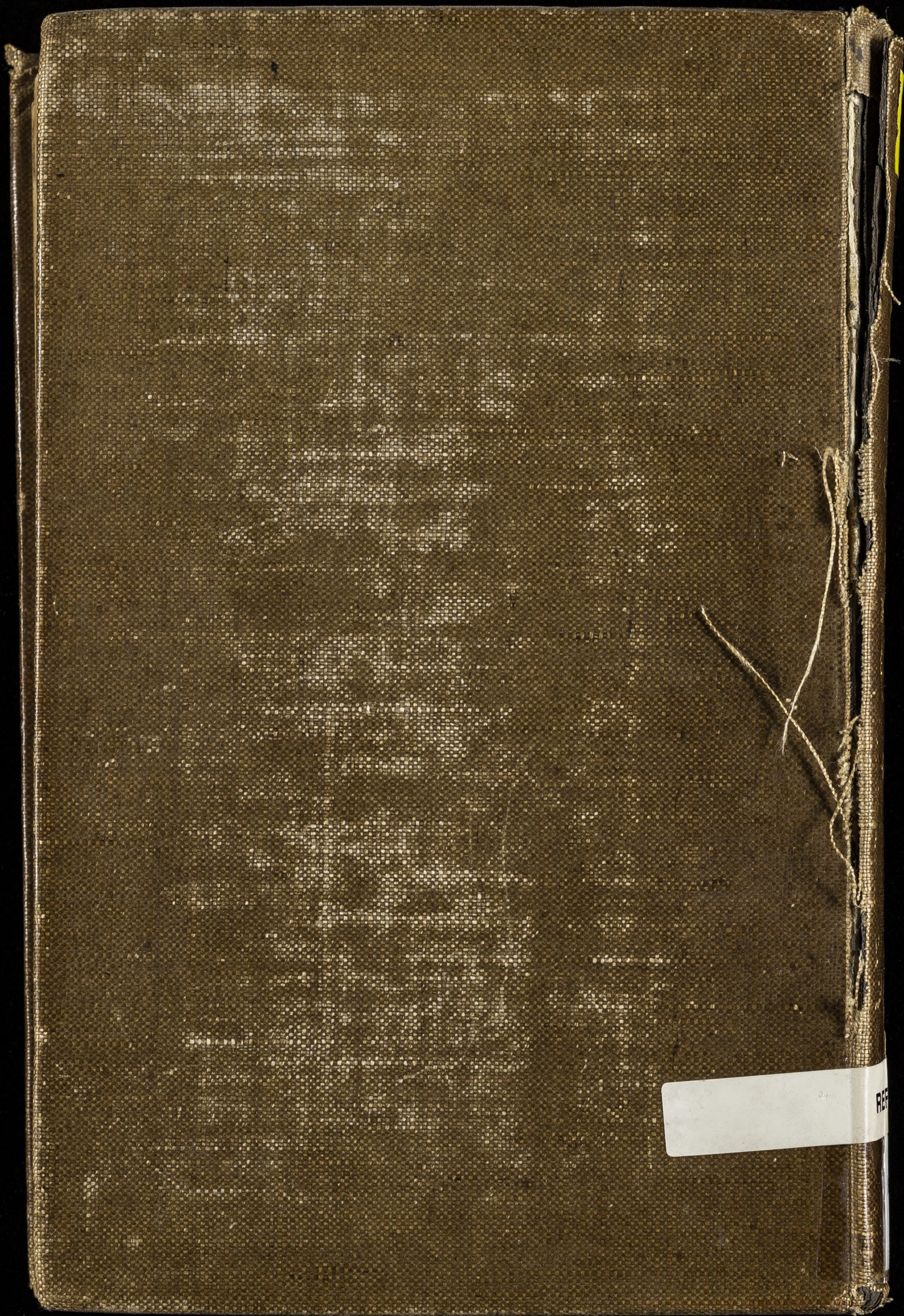
Zinc : 371, **379-81**, 387, 397, 399 ; *see also* Lead, tin, zinc, and other metals.

Crude, in cakes, &c., 372, **380**, 397, 399.

Manufactures, 372, **380**, 381, 399.

Zinc oxide, 380.





REF