

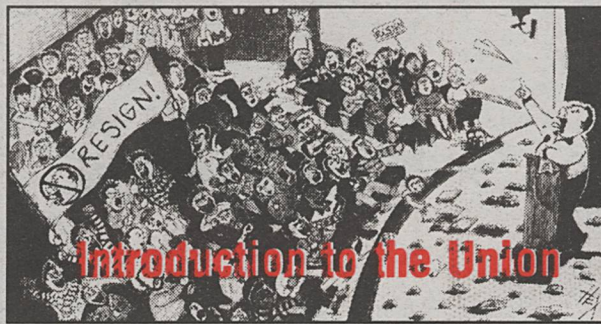
# The Beaver

THE NEWSPAPER OF THE LONDON SCHOOL OF ECONOMICS STUDENTS' UNION

Issue 443

October 3, 1996

First published May 5, 1949



## Lowering Standards of Education?

**F**reshers entering the LSE this year are facing worse student hardship than ever before. With rent in hall costing up to £85 and grants diminishing, Higher Education could well be said to be in a state of crisis. Overseas students are finding that the tuition fees do not offer value for money. With more and more students entering Higher education will an LSE degree soon be worth the paper it's written



Still popular. Still worth it?

# Royalty in 'dramatic' takeover

Students attending some of their lectures this year might feel overawed by the setting. In developments taken place over the summer, Sadlers Wells, the renowned London Theatre company has temporarily moved to the Peacock Theatre belonging to the school. Due to extensive renovation and refurbishment at the original site in Rosebery Avenue, which shall last for two years, Sadlers Wells had been searching for an alternative place for their productions and after negotiations which lasted for quite some time, a deal was clinched with the LSE last month. As per agreement between the school and Sadlers Wells, The Peacock Theatre (formerly known as the Royalty Theatre) shall be used for shows outside of teaching hours during term-time. However, a period of five weeks to be arranged in advance, has still been reserved by the school for its own use. The formal renaming ceremony shall take place on October 2.

# DRINKING LATE WILL HAVE TO WAIT

It was hoped that by the beginning of this term The Three Tuns would have a permanent 1am license on Friday nights. Unfortunately this has not materialised leading to many scheduled events in the coming term having to be cancelled.

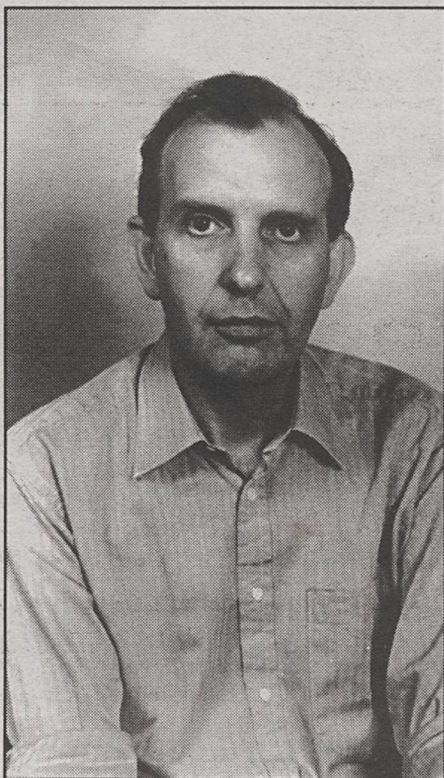
The entertainment's license would only be granted on the proviso that there was a fire exit leading out into Houghton Street. Planning permission was applied for three months ago by the Deputy Estates Officer, Philip Seager. The permission was finally granted but then permission was needed for a hoarding license to cover the work that was being done. This again, took a long time and work could not have got under way until last week. This obviously would have disrupted Freshers week and so all renovations has been suspended until they can be done during the Christmas break.

Naturally, this has made many of the planned Friday night events impossible. Chris Cooper, Entertainment's Officer, has had to cancel many of the Friday night events planned for this term because there can be no permanent 1am bar extension. He exclaimed that he was "bitterly disappointed" although hopes that most of the events can be rescheduled.

It seems that the reason that the planned building work took so long was because of the bureaucracy enforced by Westminster County Council. The Three Tuns is thinking of getting outside contractors to put in the fire exit and also refurbish the inside of the Bar. This renovation would probably take place over the Christmas break would have a 'grand' opening in January.



# Top job still up for grabs



Leslie Hannah

Changes at the top have taken place in the LSE over the summer. Dr John Ashworth, who stood down in August as Director of the school has been replaced by Professor Leslie Hannah, who has taken over as Acting Director for a period of one year. Professor Hannah, an Oxford graduate, has been with the school's Economic History Department since 1982, being appointed as Pro-Director in September 1995. Professor Steven Hill of the Sociology Department has been appointed as the new Pro-Director for a period of three years.

Efforts are meanwhile continuing in search of a new Director to take over from Professor Hannah on a permanent basis next year although the Director's office are keeping quiet as to whom the likely successor will be.

# Brunch Bowl Brightened

Major improvements and developments have occurred over the summer in the LSE catering facilities. The Brunch Bowl has had a face lift and there is a new Café opening on the Third Floor of the St Clements Building.

While the Brunch Bowl still retains its lurid shade of yellow, it has new equipment and a newly designed servery. £400,000 was spent on refurbishing the Brunch Bowl which included getting an interior designer to decorate. The £400,000 was taken from the catering account but the school has funded one new addition. This is a screen to partition the smoking area away from the rest of the

dining area. Smokers will be delighted to learn that smoking is still permitted in the Brunch Bowl but there will be screens and an extractor fan to shield the noses of sensitive non-smokers.

On the third floor of the St Clements Building there is a new café called Café Pepé. This was initially sponsored by Pepé jeans, hence the name. It will be opening in the first week of term and will serve coffee, sandwiches and pastries at prices similar to those in the Brunch Bowl. The Café will seat around sixty people and has superb views of the Thames.

# Editorial

Well, here we are again. After a summer of being sat behind a desk I'm back at the *Beaver* office behind a desk. Such is life. In this Freshers 'edition I have tried to impart my limited knowledge of London (and what I could scavenge from books and magazines) to create a guide to London. Rather misleadingly it almost looks as though I have a life, but alas no, I am just a sad *Beaver* wench with nothing better to do but write 16 pages of drivel.

The front page is a little vitriolic, but then I have a cold and I'm in a bad mood. But seriously (never), top up fees and student hardship is an issue which ought to be taken seriously before the moment passes. Too many people adopt the attitude that as it may not affect them they don't care. While this apathetic attitude is understandable, what with high work loads and pressure to get a job, it is not really forgivable when you realise that your student days may be the only time you have to be a part of something that makes a difference. I'm not trying to say that we should rise up and rebel, but maybe if people paid attention and cared a little ...

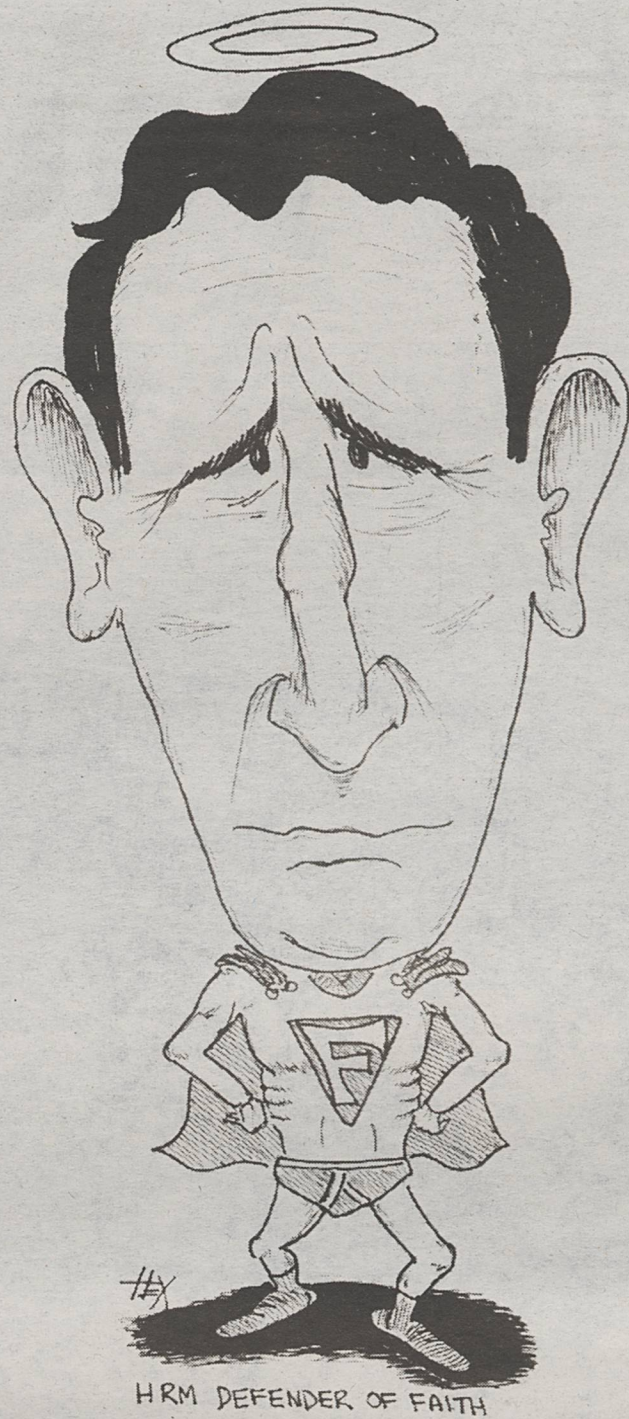
Hopefully the LSE Students' Union will not suffer the divisions that it did last year during the elections and as a united body we may well be able to achieve something. The agitation at the end of last year should never be repeated and all involved should take some degree of responsibility for the disturbances.

Our new Sabbaticals have been settling in and have already got into the habit of turning up late. This weeks Sab Hate Award goes Darrell Hare for bugging off to UCL Cocktails instead of telling me how much money he made in the Freshers Fair for a news story and for not organising any adverts from banks in this edition (see blatant space filling attempts on page thirteen etc...).

Finally, an impassioned plea for new writers and production staff. Production staff specifically, as we are now using new software and have a new computer arriving (haven't we Darrell). Come to the Collective meeting on Monday October 7 in C119 or come and see me in the *Beaver* Office (C023) any time or catch us at the Freshers Fayre.

That's all from me this week folks. See ya'll soon

Nicola Hobday  
Executive Editor



London 新加坡 MADRID London  
 LOS ANGELES  
 NEW YORK  
 MILANO َطبي  
 Mexico London MADRID  
 Paris TORONTO MOCKBA  
 'Aθη va Genève Roma 'Aθη va  
 elles Frankfurt 香港 Bruxelles  
 London 新加坡 MADRID London  
 LOS ANGELES SYDNEY LOS ANGELES  
 NEW YORK Luxembourg NEW YORK  
 Chicago 東京 MILANO َطبي

At Banque Paribas, you will always be encouraged to be free spirited.

## BANQUE PARIBAS

INTERNATIONAL INVESTMENT BANK

### PRESENTATION

DATE: Tuesday 8th October 1996

TIME: 6.30pm

PLACE: The Selfridge Thistle Hotel, Orchard Street, London W1H 0JS

In 1997 Banque Paribas will recruit up to 150 graduates into all six of its core activities:

Fixed Income & Derivatives

Equity Capital Markets

Advisory Services

Corporate Banking

Asset Management

Securities Services

If you are a second year MBA student and would like to find out more about Banque Paribas, one of Europe's top investment banks, and the career opportunities we can offer you through our global Young Executive Programme, you are welcome to join us for our presentation.

Drinks and a finger buffet will be served  
Casual Attire

For further information please contact your Careers Office

  
BANQUE PARIBAS

# It's your Union



## Dan Crowe, General Secretary, reveals how the Union can benefit us and how we can benefit from the Union

Welcome to the LSE Students' Union, that home of the brash, outrageous and free hotbed of revolution and radicalism. Well, maybe not. The notoriety of the LSE stems from the student unrest and occupations of the late sixties, a period known euphemistically as "the Troubles". Although students don't seem to be that keen on "kicking-off" these days LSE is still probably the most politically active Union in the country, with a radical and progressive outlook. For starters Sam Parham (the Education and Welfare officer) and myself are the first Labour sabbaticals here for yonks.

### So what exactly is the point of the Union and why bother to get involved?

Established in 1897 to promote the welfare of students at LSE and act as a forum for the representation of their views, the Union

today is both invaluable and ubiquitous. From having a beer in The Tuns to lunch in The Café, knocking off some cheap photocopies in the Print Room or buying a pen in the Shop: all of these are your Students' Union. Participating in a society event, reading *The Beaver* and playing a sport all mean interaction with the Union, as does seeking help and advice from the Welfare Office.

All students are automatically members of the Union, with a stake in its operations and a say in its decision making. The Union's commercial services are cooperative in nature, being run by students for the benefit of students. All profit and surplus generated are reinvested back into the Union, improving the quality of life of its members and strengthening the Unions' position.

At the weekly Union General Meetings (UGM) policy is formulated, with every member entitled to vote and speak. Unsurprisingly, there is a limit to what we can actually do. While last year's impassioned motion calling on the Union to buy tanks to send to Montreal to crush the Quebecois separatists was passed, we were unfortunately unable to obey this particular mandate because it would be ultra vires. In other words it would do nothing to benefit the corporate welfare of LSE students, and probably lead to a civil war in Canada. But if you put forward a motion demanding that the Union finally gets round to buying a mini-bus (if you think one is warranted) and it is passed, then the Union will acquire a mini-bus. A lot handier for use by societies, the AU and the Union than a Sherman M4.

As an individual we can achieve little, but when organised collectively our voice is stronger and louder and our actions harder to

ignore. Ten years ago we campaigned for the LSE to divest from all South African related investments. LSE bowed down to Union pressure, becoming the first British university to pull out of investing in the apartheid regime. So the Union does achieve things. Academically if you don't want the LSE to stand for Low Standard of Education and are concerned about standards of teaching and tutoring, fair rents in Halls, an adequately resourced library and IT provision, then through the Union you can have say in the School's decision making process.

With the threat of a £1000 plus Top-Up-

Fee set to overshadow the LSE Students' Union Centenary Celebrations there has never been a more urgent time to demonstrate the strength and feeling of the student body at LSE.

At the moment, elements in the LSE bureaucracy are conducting a "phony war" over the issue of Top-Up-Fees. The Union is a sleeping Gulliver ready to wake, and the planned introduction of Fees would be the wake-up call. Higher Education is threatened with privatisation, and LSE students should be proud to be at the forefront of a national campaign of resistance.

### Members of the Students' Union Executive

General Secretary - Dan Crowe  
 Treasurer - Darrell Hare  
 Education and Welfare - Sam Parham  
 Entertainments - Chris Cooper  
 Communications - Zeeshan Azhar  
 Societies - Surya Pathmanathan  
 Environment - Erik Wernevi  
 Overseas - Narius Aga  
 Women's Officer - Fatma Masumi  
 Mature Students' - Julie Lawrence  
 Services - Imogen Bathurst  
 Equal Opportunities - Anja Masden  
 Postgraduate - Francesca Malarée

# Guide to London

Your pull out guide to  
what's hot and what's  
not in the capital



Coming to a new city as a student should be exciting but can also be daunting. When the city is as big as London the challenge is that much larger. In this eight page pull out we have attempted to outline a few of the main areas of exploration and listed the best places to go. We have concocted a clubbing guide, an eating guide, a pubbing guide

and a guide to the cultural sights in London, plus a shopping guide and a sightseeing guide. These are not complete and do not attempt to list everything in London - there simply isn't space in eight pages. What it is trying to achieve is to give you a head start to set you off around the capital.

Whatever your interests there should

be something to inspire you. If you discover something in London that we have not listed, yet seems so amazing that all LSE students must be made aware of it, then come to *The Beaver* office and let us know. Maybe you would like to write about it yourself.

The fact of the matter is that your first year at LSE is the best time to

throw yourself enthusiastically into all that London has to offer, before the weight of the world lands itself upon your shoulders and you become a tired old second year.

We hope that you enjoy your first year and all of your years here in London and with luck this guide will set you off in the right direction.

# Clubbing

## Bagleys

This is situated in Kings Cross in a rather dodgy looking warehouse. It is a huge club with a capacity of 2,000. Seventies funky madnes in the shape of 'Starsky and Hutch' has been resident here on a Saturday night and still will be in the Bunker Bar. However, from October 5, Freedom will be taking over the rest of the club with four rooms playing four different music styles catering for every taste. Entrance is £10 although there may well be student concessions. There should be representatives attending the Freshers' Fair. The night lasts from 10pm to 6am although the first night party will be from 10pm to 8am. There are also various other nights alternating on the Friday.

## Blue Note

This club boasts a serious music policy - good sounds and friendly security. Friday night is called the London X Press playing soulful tunes at £6 concs £8 otherwise. Saturday night is called Atletico and plays dub reggae, drum 'n' bass fused with asian influences. Sunday night is Metalheadz with Goldie, although this night is soon to move to the Leisure Lounge on Saturdays. If you understand the gargon you will probably fit in.

## Browns

For seriously rich students only! This is a members only club and it costs a round five hundred pounds for a year. Only worth it if you are a major autograph collector as this is where ALL the famous people hang out.

## Camden Palace

Based in Camden High Street this club plays all sorts of different music types. On Tuesdays there is 'Feet First' which is alternative rock. Wednesday is 'Club Fantastic' playing eighties music and every other Thursday there is a Goth night or live bands. On Friday there is 'Peach' playing House and Garage which goes from 10pm to 6am. Different events occur on Saturdays, on October 5 there is 'Divine' playing House and Garage going from 10pm to 8pm which has a line up that includes Paul Oakenfold as guest dj.

## The Cross

This is up in Kings Cross (surprisingly) and it is opposite Bagleys. The Cross features various different nights which alternate on Fridays and Saturdays. On Saturday October

5, there is a night called Baby Georgie which is from 10.30pm to 6am this is a more compact and exclusive version of 'Georgie' in the West London. Fridays event is called Star Child going from 10.30pm to 5am. Uplifting happy house is the order of the day in the Cross. It is smaller club with a capacity of 360 and it is full of shiny, happy people. Dress to impress.

## Fridge

This large club in South London is actually a converted cinema which has a capacity of 1,100. Saturday night is called Love Muscle and is a very successful gay club. Fridays play trance and techno on four different nights that rotate the most famous of which are Escape from Samsara and Return to the Source. These nights are extremely popular and they also offer student concessions of £8 rather than £10. From October 10 there is night starting on Thursdays called Red Planet which features the best in Detroit Techno.

## Garde-ning Club

The Gardening Club is open seven nights per week. Monday nights are called Club Tropicana and feature new djs. Admission is £3 NUS and drinks are from £1. The most popular night for students is probably Tuesday, called The Pinch which plays trance and hard house with the resident dj Fabio Paras. All drinks are £1.80 and it costs £3 with NUS for entrance. Wednesday nights are new and called Swamp, playing 'spacey' (?) drum 'n' bass, also £3. Thursday nights are called Snuff playing trip hop. Fridays are called Whoop it up! and cost the bargain price £6 NUS on the door from 11pm to 5am. Music is described as "stomping house for the up generation". Saturdays are called Club for Life which is very busy with many being turned away at the door. There are no concessions with entrance costing £13 and many good guest djs. Sunday night is called Low Rider and is strictly gay playing a mixture of music styles. Entrance is £3 NUS.

## Hanover Grand

Wednesday nights at the Hanover are called Fresh n' Funky which plays a mixture of funky grooves with soul and reggae. Entrance costs £5 and it goes from 10.30pm to 3.30am.

Thursday night is big night at the Hanover Grand called The Next Big Thing with soul downstairs and house upstairs. This night is very glamorous and famous people have been spotted. Well, one of my friends saw Rick Alessi from Neighbours there once. Anyway, this costs £10 to get in. Friday is called Planet 42 and costs £10 and plays house. Saturday is called Malibu Stacey and costs £12 and plays house as well.



£10 afterwards. This night plays swing, soul, hip hop, RnB, acid jazz and live jazz

## The Leisure Lounge

Friday night is called Pop Starz which is a mixed gay night playing Brit pop and Indie on the bottom floor and upstairs playing the worst of the 80s. Metalheadz starts at the Leisure Lounge on Saturdays which is a jungle and drum n' bass night from Goldie. This is the first regular jungle night on a Saturday and entrance costs £12. The club itself holds 1000 and has an interesting airport theme. The Leisure Lounge is also hosting one of the main Freshers events.

## Le Scandale

Tuesday is the main student night at this club on Berwick Street with entrance at £2 and all drinks at either 60p or 80p. Music styles range from 70s, 80s, 90s, and dance and it goes from 9.30pm to 3.30am. On Tuesdays you are given a flyer to get in on Friday for free, it would cost £6 otherwise. Friday is an eighties night that also goes from 9.30pm to 3.30am. Saturday night is Carwash playing seventies disco and the cheesiest of cheese. It starts at 10pm and goes until 3.30am entrance is £9 and dressing up is compulsory. Time to don that afro wig ...

## Heaven

Tuesday night is called Bangs and it plays disco handbag tunes. It costs the bargain price of £1 with a flyer for entrance and £3 without. Wednesday night is called the Fruit Machine and it plays light house and 'good time techno'. Entrance is also only £1 with a flyer before 11 or £4 after 11. Thursday nights are possibly the most famous called Megtripolis costing £5 with NUS playing a techno mix to a mixed crowd. Friday night is called the Garage playing hard house and techno trance costing only £5. Saturday nights are strictly gay nights called Made in Heaven which costs £6 before 11.30 and £8 afterwards.

## Iceni

Iceni is made up of three floors which enables them to play different music on each floor. Friday is called Atomic Model which goes from 11pm to 3am and costs £12. They play House and Garage, Swing and Latino. Saturday is called Flipside which goes from 10 pm - 3am and costs £7 before 10.30 and



A definitive guide (well nearly) to clubs in London. Making it large with The Beaver!

### Ministry of Sound

Everybody has heard of the Ministry (bought the CD, worn the t-shirt), so when in London you do have to go to the club. On the last Thursday of every month there is a night called Logical Progression which plays mainly drum n' bass. Every Friday from 10pm to 6.30am there is a night called Frisky which costs £8 with NUS on the door. This plays Progressive House and the resident djs are Seb Fontaine and Heaven. Saturday nights are called Rulin' and they are from midnight until 9am and admission costs £15. The music consists of US Bass, Garage and House. The Ministry has just celebrated its fifth birthday and it had a big celeb filled party. Unfortunately the VIP tickets for *The Beaver* got lost in the post ...

### SW1

Friday night is called Rampage and it plays Soul, swing and R 'n' B. It goes from 10pm - 6am and costs £5 for ladies and £8 for men before midnight and £8 after for both.

**We need hardcore clubbers to do club reviews weekly. This is your chance to be put on the guest list and have a night out or free. All you have to do is write about it. Come to the Beaver Collective to find out more**



# Eating

The Beaver selection of some of the best restaurants in London. Get Large with The Beaver

Eating out is one of those great pleasures in life, and if you live in catered halls you will discover that it is one of those great necessities. It can be expensive to make a habit of but if you get to know the bargains then lunchtimes and evenings need not cost the earth. We at The Beaver have attempted to wittle down a list of the best places to that fall under various different categories. Fun places, cheap places and where to take your parents (when they're paying). This has been done with the indispensable guide Good Cheap Eats in London the updated version of which will be coming out at the end of this year by Hardens. Read on for a gastronomic extravaganza ...

## Much Cheapness

**Belgo Centraal, 50 Allen Street, Covent Garden.**

This is a great place to go for lunch as they offer really good deals for mussel dishes. It is a Belgian restaurant and they offer a huge range in rather good Belgian beer. The decor is metallic and futuristic and the waiters are dressed up as monks. Definitely interesting. You may have to share a table at busy times.

**Café Sofra, Bow Street, Covent Garden.**

Also a good place to go for lunch as it is a stone's throw from the LSE. Offers an inexpensive range of middle eastern snacks (filled pitta bread, falafal etc), you should not spend over £4 on one dish. Interestingly covered chairs.

**Dome, 38 Long Acre Road WC2**  
354 King's Road SW3  
Kensington Court W8  
341 Upper Street N1  
38 High Street NW3  
91 High Street SW19  
New one on Old Compton Street

This is my personal favourite for price, quality and service. You can get a three course meal for fiver or choose off the reasonably priced A la Carte menu. The venue itself is very stylish with a young

crowd eating and drinking there. Lots of vegetarian options but nice meaty meals too.

**Food for Thought, 31 Neal Street, WC2**

Okay, I've never been here but the book says that it's a really cheap, serving vegetarian food at bargain places. Maybe I will have to go here in the name of research.

**Moshi Moshi Sushi, Unit 24, Liverpool St Station, EC1.**

First off, this place has a great name, and secondly it serves good value sushi, thirdly it serves it on a conveyor belt and you have to

grab food off it as it passes you. Take your colour coded plates to the till when you leave and pay accordingly. What fun!

**Pollo, 20 Old Compton Street WC1.**

This is a great atmospheric and cheap place to go for a hearty portion of pasta. It's always crowded, full of students and badly paid actors. Expect to share a table. For a massive plate of pasta you will have to pay no more than £4, house wine is £5.75. You can't go wrong.

**Wagamama, 4 Streatham Street WC1.**

This place manages to be very trendy and cheap at the same time. So trendy that you will probably have to queue to get in. It offers a range of Japanese food and noodles are the staple dish. The clientele are young and the seating arrangements are reminiscent of a school dining room as you are seated in long rows. Main course costs just over a fiver. They do tend to rush you out though.

## Fun places

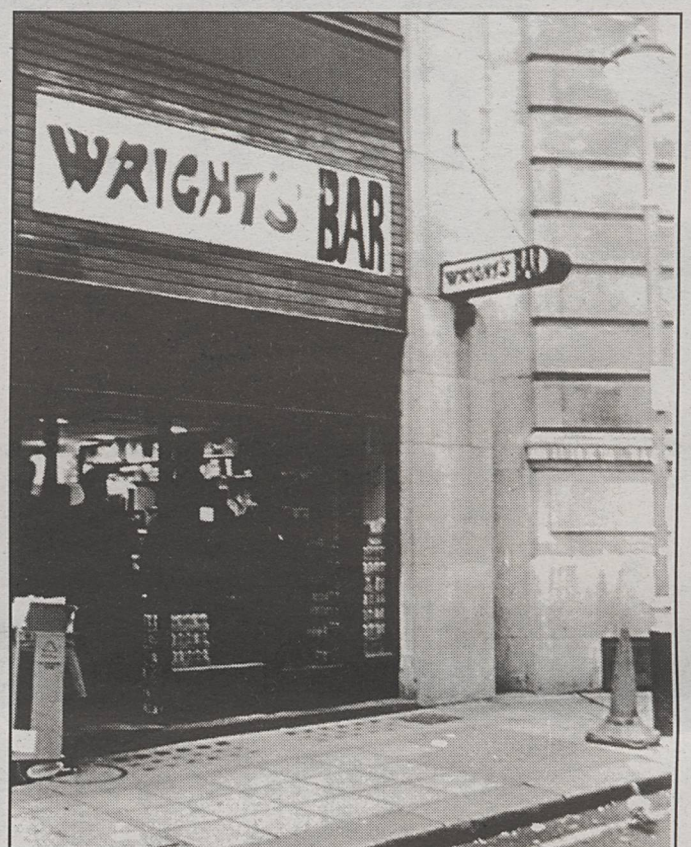
**TGI Friday's, 25-29 Coventry St W1, 6 Bedford Street WC2**

This is a place to have formulaic FUN with over exuberant waiters and over priced burgers. Probably worth while going for a bit of a laugh with a group of friends.

**Planet Hollywood, 13 Coventry Street W1**

A place for movie buffs with memorabilia all over the walls. The food consists of grills, burgers and pizzas and it is not cheap. It is an entertaining place to eat, however, and it is possible to see a few famous faces - I saw George Clooney's forehead!

**Fashion Café, 5-6 Coventry Street W1**  
This place is worth a mention just because it is in the same area as TGIs and



PHs and it is *dire*. Do not go here. The decor is nasty, the food is mediocre and the service is bad. If you want to eat like a supermodel then go stick your fingers down your throat!

**Pucci Pizza, 205 King's Rd SW3**

This place is great fun to go in a group and it is less tacky than the American theme restaurants and less pricey. It's great to place to sit outside and pose at in the summer and it is a cool place to be seen in. Naomi Campbell is often spotted here apparently.

## Stylish places to take your parents

**Quaglino's, 16 Bury Street, W1**

Very glamorous and nicely expensive. Most people have heard of this place so this is a pretty good place to take mummy and daddy and bleed them dry.

**Simpsons-in-the-Strand, 100 Strand WC2**

This is THE traditional English restaurant and a great place to eat enough for a week on mater and pater. It also has the benefit of being famous and olde worlde - good if your parents wants to splash out on a traditional English experience.

**San Lorenzo's, 22 Beecham Place, SW3**

Where Di likes to lunch with her pals. Particularly good if you want to impress parents with savvy of stylish London places. Great place to go with just Mummy dearest and combine it with a jaunt around the designer shops. Hoorah!

**The Fifth Floor, Harvey Nichols, Knightsbridge, SW1**

Need I say more sweetie. Absolutely fabulous darling!

# Freshers

Come along and sing the so

## Thursday

### The Martin Taylor Hypnotist Show

Every Freshers week in every university up and down the country has a hypnotist. The Martin Taylor Show is a little bit special and always proves to be favourite at the LSE.

Go along and make a complete fool of yourself on stage - at least people will remember you for it. Alternatively just go along and laugh at other people's expense

## Friday

### An evening of Dance

With a 1am bar extension and selected lagers and batters at only 90p a pint you can't go far wrong with a Friday night in the Three Tuns.

Whatever your taste in music there will be something to suit you. DJ Mark Chang will be spinning happy house and hard house beast in the Underground, while DJ Cory will be mixing his classic selection of indie, britpop and eighties hits.

Only £2 entrance (£1 with an Ents card)



## Saturday

### The Saturday Slam

Late bar!! Cheap drinks!! Cocktails!! Inflatable toys!! Hundreds of giveaways!!

PLUS

Live Bands!! Including Cecil, Seven, Wide eyed Wonder, Not Now Melissa plus an extra special live band

Everything kicks off at 7pm in the Tuns, the Quad and the Café

Tickets are £4 (£3 with an ents card)

There is also the Chuckle Club in the Underground featuring Harry Hill, Milton Jones and Rory Motion.

Entrance costs £5 and the doors open at 7.45pm

## Monday Latin!

Dan Crowe and Luke Ponte perform their stage adaptation of Stephen Fry's play Latin (or Tobacco and Boys). It tells the tale of the sordid goings on at a top public school.. Sound familiar anyone?



# 'events

## ng and join the jamboree

### Tuesday

Events happening in Halls  
(unless you're in International  
in which case bad luck!!)

### Wednesday

## Sports night

This is the first day of trial for the LSE sports teams. When returning in the evening you have the England vs Poland match to greet you on the big screen in the Underground. (kick off 7.45pm)

There will also be a sports quiz in the Tuns, plus a pool championship, a darts tournament, lots of cheap drinks and beat the goalie in the Quad.  
It's all free

### Thursday

## Scarlett

This promises to be the biggest night of the year. It is certainly not to be missed. The LSE moves to the Leisure Lounge at 121 Holborn.

Your host for the evening is KISS FM's very own Graham Gold, with support from Darren Pearce (KISS FM), Luke Neville (The Cross) and Mark Chang, playing happy house in the runway, while hard house and techno blast through the cockpit. Entrance is only £5 (£4 with an ents card) and the night runs from 10pm until 4am



### Friday

## Friday feeling

It's the first Friday night of term and where better to celebrate but at The ThreeTuns. Especially considering we've got a 1am bar extension and top DJs including Andrew Galea (The End), Luke Neville (The Cross) and Mark Chang. Eighties classics in the Underground as ever with DJ Cory. Plus the biggest ever drinks promotion!  
Entrance is only £2 (£1 with an Ents card)

### Saturday

## Chuckle Club

Tonight the Chuckle Club boasts a bill of Alistair McGowan, Mike Hayley and Ian Keable.  
Doors open at 7.45pm and entrance costs £5

# The essential shopping Guide

Shopping in London is instant self-gratification and pure indulgence for anyone (unless, of course, you've been window shopping, when you end up miserable at the end of the day because you feel so broke and have had so many sales assistants swearing at you as you leave the shop... while struggling to hold the piles of clothes you've tried on). Despite the poor/broke status we students frequently lay claim to, occasionally money emerges in our bank accounts like manna from heaven and you'll have the opportunity to use this article to the fullest of its potential.

Sadly, however, for many of us, our hard-earned cash is mostly diverted towards buying groceries. Your local large supermarket chain is your best bet and will be your cheapest option. Waitrose, Sainsbury's and Tesco's are the better-known chains. Tesco's specialises in low-priced ready made foods, nutritional salvation for those of us who know absolutely nothing about cooking. Waitrose is plentiful in fresh vegetables and fruits. For those who are flush and prefer to dine in exotic foods, anything and everything can be found at Harrod's Food Hall at sky-high prices. Coffee enthusiasts can find Starbucks blends at Bodum in Covent Garden, or find more choice at the Seattle Coffee Company right by Covent Garden tube station.

As for books (we are students, after all), textbooks can only be found either at the Economist Bookshop located in the School itself or at Dillons Bookshop on Gower Street, right opposite ULU. An eclectic mix of secondhand novels and non-fiction genre can be found on Charing Cross Road in a string of extremely cheap second-hand bookshops.

Cheap CDs can be found around London at various second-hand CD stores. However, Hanway Street and Berwick Street are the more well-known area and can be reached by Tottenham Court Road Tube and have a large number of collector, second-hand and specialty stores.

London has shoe shops aplenty, none of them very welcoming to a thin wallet. Red or Dead, Hobbs and Pied a Terre price their items from 50 pounds and over. Shellys can occasionally surprise with lower prices. The January sales are, however, the best time for

cheap shoes and huge discounts.

Departmental stores here in London are world-renowned and as a result, are very expensive. Harrods and Harvey Nichols are the priciest and most exclusive of the lot, both nearby Knightsbridge tube station. Selfridges is merely a less snobby alternative to Harrods, located on Oxford Street. Marks and Spencers carries good quality clothing which can usually be found within a price range of £30 to £200. M & S, or Marks and Sparks as fondly addressed by locals, can be found at various branches around London. Its flagship branch, however, can be found on Oxford Street. Liberty (Regent Street), Fenwick (New Bond Street), Fortnum and Mason (181 Picadilly) and Dickins & Jones (Regent Street) are other department stores here in London, known more for their specialties in branded womens' clothing than anything else. Fortnum's, however, also carries a variety of (expensive) exotic foods in its basement.

As one of the world's major fashion capitals, London carries every preferred style of dress, ranging from Sloaney to preppy to fashion victim. Sloanes eager for a discount can find massive discounts on Burberry goods at the Burberry Factory Shop at 29 - 53 Chatham Place (0181 985 3344). Discount designer clothing can be found at The Loft in Covent Garden: 0171 240 3807. For secondhand clothes, Oxfam is a reliable source of very cheap and (usually) good quality items. A particular branch of Oxfam in Drury Lane is well-known for its frequent 'finds' as it receives 'throw-outs' from theatres and fashion magazines in the area. Portobello Market and Camden Town Market can also provide rich pickings for broke yet fashionable students. Mens' and clothing of any kind can be found on Tottenham Court Road and Oxford Street: Top Shop and Miss Selfridge are sources of low-priced knockoffs of the latest designer creations. Kookai, Morgan, Monsoon and Accessories provide trendy womens' clothing and handbags at more moderate prices. French Connection provides garments and shoes for both women and men, and is in keeping with the latest trends....

Have fun!

# A cultural guide to London

London, the artiest city in the world offers satisfaction to everyone with aesthetical interests and needs.

Starting off right in the centre, majestically surmounting Trafalgar Square, the National Gallery back to back with the National Portrait Gallery offer a great variety of classical and modern art covering the past eight centuries. The respective permanent collections constitute a recapitulation of British and European history both through styles and personalities. Admission to the main exhibition is free.

Another highlight in London's cultural life is the Tate Gallery at the Millbank. The focus there is rather on modern and contemporary artists making the visit a very easy and enjoyable one. The Tate is also hosting some major high-profile temporary exhibitions always attracting large crowds (beware of tourists). Admission is free. Soon (a couple of years from now) to follow is also the Tate Gallery of Modern Art inside the Bankside power station, right in front of the local LSE hall of residence.

Specialising on temporary exhibitions is the Royal Academy of Arts near Piccadilly Circus. This season's upcoming exhibitions will feature Giacometti, Picasso and Braque. Always worth a visit. Admission ranges from £3-£5.

Rounding up the major locations the British and the Victoria and Albert Museum in Bloomsbury and Knightsbridge, respectively, exhibit amongst other a more cosmopolitan, ancient and multi-cultural arts

composition; not necessarily as easy as the the above mentioned venues. Admission is free, respectively.

Among the public galleries the Barbican centre embedded in post-Blitz architectural Orwellian ugliness (or rather beauty?), plays host to changing exhibitions. But its main quality shows as being home to the London Symphony Orchestra and hence offering the best classical music in town. Admission to exhibitons ranges from £2.50-£5 concerts' standby tickets (great seats) range from £6.50-£8.

Even uglier, the concrete monster on the Southbank which includes the Hayward Gallery and three concert halls has with respect to both its exhibits and its music a more alternative touch. Nevertheless, a five minute walk away from LSE a visit to free lunchtime music or commuter jazz is always worthwhile.

Admission to exhibitons ranges from £3.50-£5.

In the very west of London located beautifully in Holland Park Leighton House (pronounce it 'haiz') displays a distinguished mix of British and Oriental culture. Occasionally a venue to contemporary artists. Admission free.

Its pendant, the pride of the East End, the Whitechapel Gallery at Aldgate East offers a magnificent setting to modern and contemporary artists in a rather rough environment.

Admission is free.

DB



**PERUGINO**

COFFEE HOUSE

FOR THE BEST ESPRESSO AND CAPPUCHINO -  
COME TO **PERUGINO**  
FRESHLY MADE SANDWICHES & ITALIAN CIABATTAS  
ALWAYS AVAILABLE

36 Kingsway  
London WC2

Tel: 0171 242 7768

# Sight seeing in London

# Pubs and Bars

Bottoms up, chin, chin and down the hatch. The Beaver Guide to watering holes

London is a city that attracts many tourists. This is particularly annoying in the summer but you will realise that tourists come to London for good reason. Although you may feel as though you want to blend straight in as a natural born Londoner (cor blimey, stone the crows, aint the Queen Mother got a lovely smile) there is no shame in aquatinting yourselves with some of the tourist sights in London.

There are many tour buses that travel around London and allow passengers to 'hop on and hop off'. These tend to be rather over priced and are not really worth the money. It is far better to get on a number 11 bus which goes from Bank to Fulham Road via St Pauls, Trafalgar Square, Westminster and the Kings Road. You don't get the commentary but this is probably an added bonus.

Places worth seeing within a walking distance of the LSE are the Law Courts; St Pauls, the South Bank, the British Museum and Covent Garden. The British Museum is one the only museums left in London that have free entrance. St Pauls is a bit of a walk and if you want to get up to the whispering gallery then this costs money. The South Bank may not be pretty to look at but you can find MOMI (the Museum of Moving Images) here. It does cost money to get in but it is very entertaining and more 'hands on' than a lot of museums.

Most other museums are situated in South Kensington and Knightsbridge. All charge some kind of fee for entrance although it is possible to get student admission rates. The Tower of London is worth a visit and handy if you're at Butlers. The London Dungeon claims to be gory and Madame Tussauds is very popular. These places all charge quite high admission rates. Hampton Court is worth a visit in the summer months although it is quite far away. It is good value for a day's visit and is about half an hour away by train from Waterloo.

It is a shame to pass a lot of these opportunities by when you are a student in London. Particularly because admission is that bit cheaper. Don a baseball cap, hang your camera around your neck and of you go!

Of course the main reason for coming to university is to consume vast amounts of alcohol. *The Beaver* aims to highlight the best drinking holes in London. Numerous pints were drunk in research for this article - it's just all part of the service ...

### The Three Tuns

Yes, the Students' Union bar fully equipped with grubby carpet and wobbly tables. This is probably THE cheapest place to drink in London. If you haven't discovered it already it has a certain sordid charm. The bar staff are surly and the beer is warm - what more could you ask for? There are plans to renovate The Tuns over Christmas (just like the plans to renovate it over summer and last summer etc ...). It may never happen but regulars love it the way it is. The Tuns is definitely the place to be for true LSE drinkers.

### On Campus

If you must venture outside the LSE then you could try no further afield than **The George**, popular with LSE students between three and five when the Tuns is shut. It is more pricey than the Tuns, obviously, but they do serve a nice pint of Caffreys.

There is also **The White Horse** which is just around the corner from the George. It advertises cheap beers although to be honest I do not know anyone who has been there.

### Covent Garden

After here we are entering Covent Garden territory where the beer prices shoot up. Don't let this put you off, what were your student loans made for after all?

Firstly a plug for the **Firkin** chain of pubs, these are found all over the country as well as all over London. The nearest ones to the LSE are the **Fulmar & Firkin** in Parker Street, WC2, and the **Flyman & Firkin** in Shaftsbury Avenue, WC2. The nice people at the Firkin Brewery have offered us the chance to have four pints of Dogbolter (?) for a pound each. Just cut out these tokens below and hand it to the bar person in your local Firkin pub to claim your pint.

Moving onwards we have a huge range of



bars and pubs in Covent Garden. **The Punch and Judy** has to be done at least once although it is often full of tourists. The beer is expensive but you can stand outside (better in the summer) and watch the street artists from a balcony overlooking the pavement. The other bar that is similar in concept and price is the **Opera Terrace**.

Other popular bars in Covent Garden include **Old Orleans**, popular because of its generous happy hours mid week on cocktails. This is also a mediocre Mex-Tex style restaurant. Note: the barmen wear horrible shirts. Opposite Old Orleans is **Bar Zola** which is relatively new. It is a nicely laid out bar with comfy chairs and it gets busy at weekends, mainly full of office workers.

A new chain of bars has opened recently called the **Pitcher and Piano**. There is one near Charing Cross and one in Soho as well as being two on the Fulham road and one in Chiswick. These can be quite suity on a Friday night but are generally full of young,

trendy people and are a good place to go with lots of comfy seatage.

### Naff nights out

A section on bars and pubs cannot go without mentioning **The Sports Café**. You have to queue, the drinks are expensive, the clientele are all tourists but what the hell - you can drink till three am and it's free to get in! It also has a dance floor and plays shit music. Great for a beery night out.

**Long Island Ice Tea Bar** is another classic drunken night out place complete with expensive beer and cocktails, dance floor, crap music and mingers. You wont remember much of the evening and that will probably be a blessing! **Bar Madrid** is very similar but with a Spanish theme. It is in these sorts of places that you will undoubtedly come across inebriated members of the AU.

There are so many other bars and pubs, too many to mention in this one article. The best suggestion is to go on a pub crawl and discover the best ones for yourself.

reader offer \*\*\* reader offer \*\*\* reader offer \*\*\* reader offer



## BEWARE OF THE DOG!



Get down to your local Firkin and wolf down a pint of Dogbolter Bitter for the fantastic price of £1.00 a pint!

# £1

A PINT



THE FIRKIN BREWERY™



£1

**£1.00 A PINT OF DOGBOLTER**

Fill in this voucher and bring it down to any Firkin Pub to claim your pint.



£1

**£1.00 A PINT OF DOGBOLTER**

Fill in this voucher and bring it down to any Firkin Pub to claim your pint.



£1

**£1.00 A PINT OF DOGBOLTER**

Fill in this voucher and bring it down to any Firkin Pub to claim your pint.



£1

**£1.00 A PINT OF DOGBOLTER**

Fill in this voucher and bring it down to any Firkin Pub to claim your pint.

# A letter to international students

## Liz Chong gives advice on fitting in as a foreign student

Leaving your home to attend university in another country and another culture can be a very intimidating prospect for anyone. Firstly, give yourself a pat on the back that you've actually got yourself to Freshers' Fair to receive your (very brilliant) copy of the Beaver. Secondly, believe me when I tell you that you're going to love your time here at the LSE, be it one year, one term or three years. That is all, however, up to you.

Many moan that LSE has no campus: London is your campus. Take it upon yourself to explore one of the most vibrant cities in the world using our Beaver Freshers' Guide as a starter's map of London life.

With regards to the School itself, exploit its unique representation of international students, who compose over 50% of the LSE's under-graduate and graduate schools. The Malaysian community is large, especially at under-graduate levels and are known for frequent get-togethers, supposedly for the many distinguished Malaysian speakers but more for the free snacks afterwards. The Latin Americans also attend the LSE and organise Latin nights at various clubs around London. Needless to say, the events are well-attended. Brazilians and Malaysians, however, aren't the only groups of international students attending the LSE. A random survey of students I met last year merely in my halls of residence: Venezuelans, Jordanians, Cypriots, Israelis, Singaporeans, Italians, French, Dutch, Koreans, Kenyans, Americans, Czechs, New Zealanders, Thais, Canadians.... and, of course, the odd English student.

More often than not, many of you shall

hear that the Student Union is dominated by the English and it is therefore....useless. Many international students feel alienated by the seemingly English nature of the Union. The Students' Union and its related bodies (hall committees and *The Beaver*) appear to be dominated by the English because the international students who do involve themselves with the Union are few in number. By all means, busy yourself with the society that your fellow countrymen belong to, but I can promise that if you widen the areas of your involvement: you'll truly be meeting the widest cross-section possible of LSE students and you'll have a wonderful time doing it. By doing so, you would automatically avoid one of the greatest pitfalls of LSE's large international community: cliqueness. Understandably, stuck in a strange new country and culture miles from your home, friends and family, automatically we all turn what we perceive as familiar. But in doing so, many lose the opportunity to absorb an entirely new culture or to widen your horizons even further. I'm not arguing that you don't speak to your fellow Korean or Singaporean students at all. I'm proposing that you just make a tiny effort to meet other international and English students. It'll make you much happier, believe me.

Before I sign off, it might be helpful for you to register with the police. The nearest police station to the School is in close proximity to Holborn tube station: take the number 19 bus from Bloomsbury Square. Another option is to register with your embassy: useful in the event of an

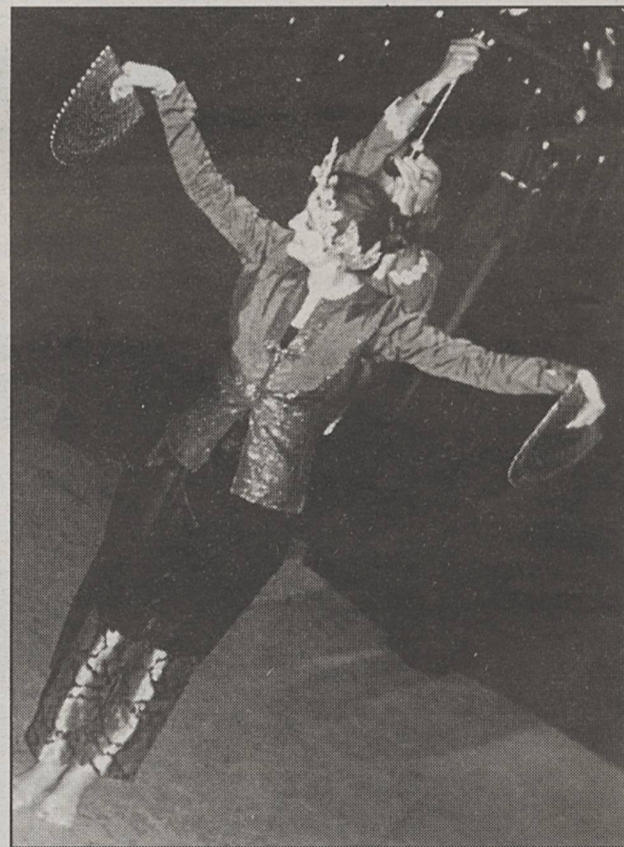
emergency. If you're living in an LSE hall, your Overseas Officer is there to help you, as is the Student Union's Overseas Officer. Narius Aga can be contacted through the SU reception on the first floor in the East Building. The SU's Welfare Office can be consulted on immigration and visa matters.

Registering with the Health Station is a must; contrary to popular belief, all overseas students are covered by the National Health Service. Although some of you may regard this as premature advice, it may be very useful to some of you to know that undergraduate degree regulations have been tightened. The thought of failing even one exam at the LSE, especially with A level or Bac results as brilliant as yours may seem unbelievable, but some of you might fail two (or more) of your four exams in June. Students will no longer be able to continue at the School, but will have to undergo the torturous ordeal of applying to the School for approval for additional registration, full-time or part-time. Full-time is pretty much impossible to obtain, while applying for part-time status to repeat the subjects they failed. Failing more than two exams would automatically exclude students

from attending classes and force them to take the year off while waiting to retake the exams as the for full-time status is extraordinarily difficult to obtain. Handy advice would be to check the regulations in the School's Calendar and to consult your tutor as much as possible.

Having scared you, oft-quoted statistics are that 2% of all LSE students fail their exams.

Enjoy your time at the LSE!




**Fill in your details:**  
Name \_\_\_\_\_  
Address \_\_\_\_\_  
Postcode \_\_\_\_\_  
Your local Firkin Pub is: \_\_\_\_\_

Postcode: The Firkin Brewery, Tamworth House, All Saints Road, Perry Barr, Birmingham B52 2TJ

**Terms & Conditions:**


- This voucher entitles the bearer to a pint of Dogbolter for £1.00
- Offer open to persons aged 18 years and over only
- Valid from 14.9.96 to 30.11.96
- Only 1 voucher may be redeemed per evening per person
- Offer subject to availability
- No cash equivalent
- Cash value 0.00
- Brewery reserves the right to withdraw the promotion at any time
- If you do not want any further Firkin information please tick




# £1.00

# A PINT

Complete the vouchers opposite, get down to your local Firkin Pub and wolf down a pint of Dogbolter Bitter for the fantastic price of £1.00 a pint! (one voucher per person per evening).





## THE FIRKIN BREWERY™

## The Shop

Amazing special deals for the first three weeks of term.

Always offers competitive prices. Clothing, memorabilia, cards, gifts, academic diaries, and a Kodak processing service on the ground floor. Stationery, pens, ringbinders and files, stamps, phonecards, computer discs, sweets and snacks in the basement.

**THE PRINT ROOM.**

**Surprisingly cheap  
photocopies.**

**Only 4p per A4 sheet.**

**Find us in E203.**

**It's above The Café**

**Get fit, or get  
fat!**

**It's your choice.**

**Take the  
opportunity to  
join the Athletic  
Union at the  
Freshers' Fair**

**SU reception  
at your  
service**

**Send and  
receive faxes,  
get NUS  
cards, have  
any queries  
about the SU  
answered.**



## Dan Crowe

**Job Title:** General Secretary (Gen Sex)

**Appearance:** Piercing blue eyes and curly locks fresh from an Austin remake.

**Elected because:** Baljit got disqualified.

**Mandate:** Old labour rather than new labour, few loony left ideas that will undoubtedly be quashed by the harsh reality of LSE bureaucracy.

**Idealistic then?** Oh yes, bless his little red socks. Sooth sayers at the LSE are predicting the eventual realisation of the impotence of his omnipotence after the usual 7 people turn up to a demonstration against student hardship.

**But what about juicy stuff?** Juicy stuff?

**Yes, anything for those female freshers to be wary of?** Oh no, they're far to old for him. Dan prefers them still in school uniform. He's currently dating a sixteen year old.

**Blimey, is it serious?** Rumour has it that he proposed over the summer holidays.

**Any other interests?** Apart from the dedication to revolution by the proletariat and an unerring fascination with Cable Street and young girls, he is also a thespian.

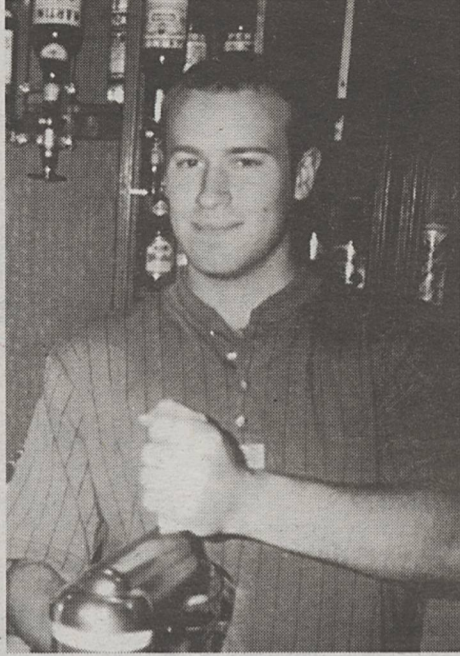
**A bit of a luvvie then?** You could say that. He has high hopes for the drama society this year, possibly a musical.

**With himself as leading man?** Possibly, although a little bird told me he can't sing for toffee.

**Not to be confused with:** Karl Marx, Che Guevara, Colin Firth

**Least likely to say:** "I'm a militant."

**Most likely to say:** "You'll be the first with your backs against the wall when the revolution comes."



## Chris Cooper

**Job Title:** Entertainments Officer

**Appearance:** Fat and balding

**Elected because:** he was more attractive than any of the other candidates

**Mandate:** To clean the Three Tuns carpet personally (still waiting), to get Blur to play at the LSE (still waiting), to have multi cultural nights in the Quad every Friday (more likely to have Blur headlining).

**Unreliable?** Maybe, but he still probably does more work than the others put together.

**Is he an infamous name at the LSE?** You could say that, but this is because he was King of Smut in *The Beaver* for the last two years.

**Any love interest for our Coops?** He wishes. Beware female freshers - you will know when you've been Coopered

**So he has some pretty good chat up lines then?** He is famed for having the worst chat up lines in history. Beware the puppy dog routine.

**So he just flits from one girl to the next then?** No unfortunately he has a habit of falling rather too heavily and some might say obsessively.

**Are his only interests girls and drinking?** Well no, by a strange twist of fate he is also captain of this year's LSE University Challenge Team, despite getting a 2:2.

**Wow, what a guy!** Hmmm.

**Not to be confused with:** Jimmy Sommerville, Oswald Mosley, Sam Parham.

**Least likely to say:** "No"

**Most likely to say:** "You are a fox and I am a farmer and I'm going to snare you fox"



## Sam Parham

**Job Title:** Equal Opportunities and Welfare Officer

**Appearance:** Fatter and more balding

**Elected because:** He really was more attractive than the other candidates.

**Mandate:** Top up fees, student issues, blah blah blah, who cares anyway.

**What does the welfare officer have to do?** Not a lot really, just organise campaigns in the Quad and 'be there' for students to come and talk to.

**So really it would be more useful to have a Sabbatical Editor of *The Beaver*?** You may very well say that, I couldn't possibly comment.

**But back to Sam, anything interesting to say about him?** Well, he's a long serving member of the Labour Club and has been heavily involved in the Student Union for years. He's basically a really good bloke.

**Boring!** Yes I know but he really is a nice guy.

**So there's no juicy scandal then?** Well no but I could make one up. Last year he was involved in a threesome shag fest with Clare Short and a goat.

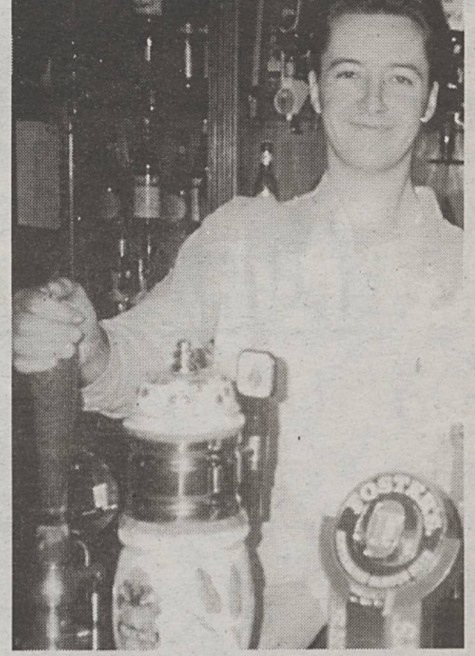
**I find that hard to believe.** Yes, I know, who'd shag Clare Short?

**So that's it for Sam then.** Yes, jolly nice bloke though.

**Not to be confused with:** The baby in the Vauxhall advert, Ian Hislop, Chris Cooper.

**Least likely to say:** "I pulled last night"

**Most likely to say:** "Shurrrup, you Bastards"



## Darrell Hare

**Job Title:** Treasurer

**Appearance:** Sleek and dashing (evenings). Tired and absent (daytimes)

**Elected because:** He sucked up to every single block-vote, and ran against no-one above four foot tall.

**Mandate:** To undo all Claire Lawrie's good work. To move the LSE brick-by-brick to York Way to act as a chill-out room for The Cross.

**Previous Treasurer experience:** Handled large sums of money during his job in The Three Tuns

**Likes:** Clubbing, sleeping, 'borrowing' money

**Can he dance?** Is the Pope an atheist?

**What about the women in his life?** Never seen without some gorgeous female on his arm up and down Houghton Street although they are always 'just good friends'.

**So there's no truth in the rumour that he was trying to court the favour of the LSE press at one time?** Don't know what you're talking about mate.

**The secret of his hairstyle:** Done once a week with the help of scaffolding and a sponsorship deal with Duckhams Hypergrade.

**Not to be confused with:** Brad Pitt, Antonio Banderas

**Least likely to be found:** In his office.

**Most likely to be found:** In bed.

**Least likely to say:** "I'll be in at 10 tomorrow morning"

**Most likely to say:** "We'll go to The Cross, and then on to Turnmills. Please come with me, because I'll look like a spoon on my own."

# Plea for writers

As you can see from the lunatic ramblings above, the Campus pages are the domain of the wise, the witty and the knowledgeable. Aimed at taking an off-beat look at LSE life and it's numerous eccentricities (in *The Beaver* parlance, off-beat translates roughly to highly offensive) we aim to amuse and entertain through our

irreverence and indomitable spirit. But, fully intending to be as clichéd as possible, the fact is that you make this paper as good as it is, and so I'm putting out an impassioned plea to anyone with even a vague level of literacy (GCSE keystone 4 or above) to come and assist with the penning of our esteemed journal. We're in need of writers,

photographers, tea-boys and general hangers on to the LSE social hierarchy at whose summit we so proudly stand. The first collective meeting is on Monday October 7 in C119 (above the Tuns) and it would be oh so jolly to see as many new faces as possible. You're also welcome to come to *The Beaver* office in C023 (below the Tuns) in the

meantime and have a chat about anything that may arise; not only are we journalists of great integrity, but we also fill the role of agony aunts and uncles exceedingly well. So for those with something to say, I hope to see you on Monday, and for those that haven't, I hope that we keep you sufficiently entertained for the rest of the year. RP

# The Beaver needs you

We need:

Writers, reviewers, photographers,  
cartoonists, production people and  
willing volunteers.

The Beaver is a badge  
It can make you more attractive to  
the opposite sex (although I  
sometimes wish it wouldn't (Ed))  
It can make you more popular  
It can make you run faster  
It does not quench your thirst  
Obey your ego - write for  
The Beaver

**Come to our first  
collective meeting in  
C119 at 6pm on  
Monday October 7.**

## Houghton Street Harry

Refreshed and newly tanned after the summer break, Harry returns to the job at hand with high hopes for the year ahead. A warm welcome to all freshers... three years of thrills and spills await you, but I feel that it's only fair to dispel some common myths concerning university life in general, and the LSE in particular.

Firstly, don't be fooled by Freshers' week and the copious amounts of socialising that surround it. The fact is that most LSE students have about as much inclination to enjoy life as Bernard Manning has to go clubbing with a group of Pakistani refugees. This institution revels in an almost sado-masochistic atmosphere, except that whips and chains are sadly replaced by complex algebraic techniques and mathematical calculations.

Secondly, I'd urge you not to carry too many false aspirations with regard to members of the opposite sex. Quite frankly, I'd rather give birth through the end of my knob than go out with the majority of LSE "women". Never have so many been in need of plastic surgery for so long. If you do kop off with someone, then beware that the said bird has probably been with all your mates before; but at least she's telling you the truth when she whispers in your ear that you're one in a million.

As for the blokes, I hope that the lovely ladies out there aren't expecting Brad Pitt lookalikes. Nobody (except for myself, of course) quite lives up to those lofty standards. Alas, most freshers will find that their romantic standards will slip dramatically soon after their arrival in London, leaving them mating vigorously with shady creatures that bear a striking resemblance to a mutated Ewok.

But fear not, because the LSE offers you so much more. After all, the prospectus told you that our sporting teams are renowned throughout London. This isn't strictly untrue. It's fair to say that LSE sport is renowned for being spectacularly shite. It all starts so promisingly- at the trials, various foreign whizzkids emerge to display their maverick talents. However, the paella/pasta boys soon disappear, leaving us with a combination of obese alcoholics and highly enthusiastic yet invariably crap Americans, who tend to have the first touch of a serial rapist.

As a member of the former category, I'm as responsible as anyone for the poor standard of LSE sport. However, I do feel that this year is going to be a good one. I know that last year was poor (and the year before was even worse), but as the saying goes, "If you fall off a horse you've got to get straight back on". I think that Christopher Reeve might think that you were taking the piss if you told him this ...

Finally, I can't leave without mentioning our sabbatical officers. Supposedly elected to make your lives easier, the four musty queers are paid 12k in order to do nothing for a year. It's for this reason that I suggest that you inundate them with requests...whether it's a problem with a dodgy landlord, a cash flow shortage, remember that they're there to help.

They're not too difficult to spot...look for two bald fellas with more spare tyres between them than the Michelin man, a possibly ginger geordie and a raving dopehead. The future of the LSE really is in safe hands...

# BeaverSport BeaverSport BeaverSport

# WHAT'S THE STORY? FIRST TEAM GLORY

No one can break through defence's wonder wall at LSE Sports Day

Saturday June 8, 1996 was the day that should have been remembered as the beginning of the revival of English football. For most of the nation the tedious drawn match between England and Switzerland

teammates Svein Mikkelson, Dan Fielding, Chris Cooper, Philippe Venini and Rikos Leong-Son, on what was to be the road to glory.

They say that there are no easy games at this level, but this proved not to be the case, as

opened the scoring for the Animals with a powerful drive. Now the pressure was on the mighty Firsts, knowing that they needed a draw to go through on superior goal difference. And so the burden fell onto the sculptured shoulders of Danny Fielding, whose powerful run down the right flank culminated in a drilled shot that left Lowen floundering. This result was a disappointing end for the Animals, as they knew that they had underperformed; none more so than the Rhino, from whom much had been expected from, but all he managed was a pass.

With the group stages over, there were some notable casualties who had not made it into the quarter-finals. The 2nds had succumbed to a much fancied (by Liz Petyt) Goldsmith' side, while the champions of two years ago, Carr Saunders, crashed out to a team of girls. In the much wagered upon battle between The Village People and Bring Out The Gimp, renamed the battle for Emma Pinkerton, Keith Benson's side ran out 2-1 winners, Ian Devine's curler proving the decider.

The quarter-finals were where the real competition finally began, with all the teams reaching this stage still unbeaten. There was a big upset as Goldsmith' were torn apart by Red Star, and another shock seemed possible as the 1sts were held to a goalless draw by Economical 1sts. However, there was only one

side in the penalty shoot-out which followed, as Svein Mikkelson, the highly rated shot stopper who only conceded one goal in the whole tournament, saved all three penalties. Matt 'Gareth Southgate' Miller declined the chance to make amends for his Cup Final blunder and refused to go near the penalty spot, even though there was no pressure on him this time.

By contrast the semi-final against Carr Saunders 2nds, and the final against the champions of the Kingston 5-a-side League (skipped by LSE's very own intellectual giant, André Granditsch) seemed to be mere formalities by comparison, the 1sts triumphing 3-0 and 4-0 respectively, with player of the tournament Miller solid at the back, Curtis dominating the midfield and Venini running rings around the opposition up front. The scenes of euphoria which followed the return of the trophy to Houghton Street were unparalleled, thousands partying in the streets as the open topped bus made its way back to the Tuns. It truly was a momentous occasion, and a great victory which self-appointed skipper Cooper graciously dedicated to the hard work of Sports Administrator Liz Petyt and the Athletic Union Executive, who made the whole Sports Day the enjoyable event it continues to be.



was a great disappointment, but for those privileged students who were fortunate enough to be at LSE Sports Day there was some consolation to be found, as the 1st Team once again demonstrated to the thousands in attendance, that with the rich vein of talent that is LSE football, the beautiful game is very much alive and well in England.

Amid the carnival atmosphere of gladiator jousting and a beer tent, forty teams comprised of students, staff, Old Economicals, city companies and this year's guest celebrity team -the London Cup champions, Goldsmith' - arrived to do battle in the now internationally renowned LSE Five-a-side tournament. It truly was a remarkable turn-out, especially given the previous night's end of term debauchery at the Tuns, which was perhaps where the tournament was won and lost. While other teams took the opportunity to get lashed, Matt Miller concentrated on getting in some early 'heading practice' on a tank-top clad midget, and Steve Curtis went home for an early night after making his girlfriend vomit. So they turned up refreshed to join their

the 1st Team heartbreakers took on a Tom Smith select five. The ensuing 4-0 demolition was a testimony to the tactic which many had been calling for throughout the season, namely that Rikos was left on the bench, with the players who could actually control the ball on the pitch. The following game was a tense affair against John Parr's 5th Team. With both teams unable to break the deadlock, it took a slide-r-ule through ball from Fielding to split the defence. As Curtis latched onto it, all that was left was for him to square to the unmarked Cooper to drill home. This was one of many goals for Chris, who was to go on to become the tournament's leading scorer, a feat achieved more by consistent goal-hanging than by astounding ability. Indeed, Cooper had been scoring consistently off the pitch as well, and the mad minger maestro was looking somewhat jaded after once more fulfilling his 3 in a bed fantasy. This result set up the much anticipated group decider between the 1sts and the Animals - a star studded team including Rhino Gardiner and club captain Blobby Lowen in what was hopefully their last ever appearances at Berrylands. However, it was Howard Wilkinson (who isn't a nutter) who

