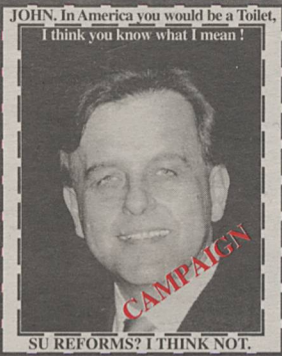


THE BEAVER

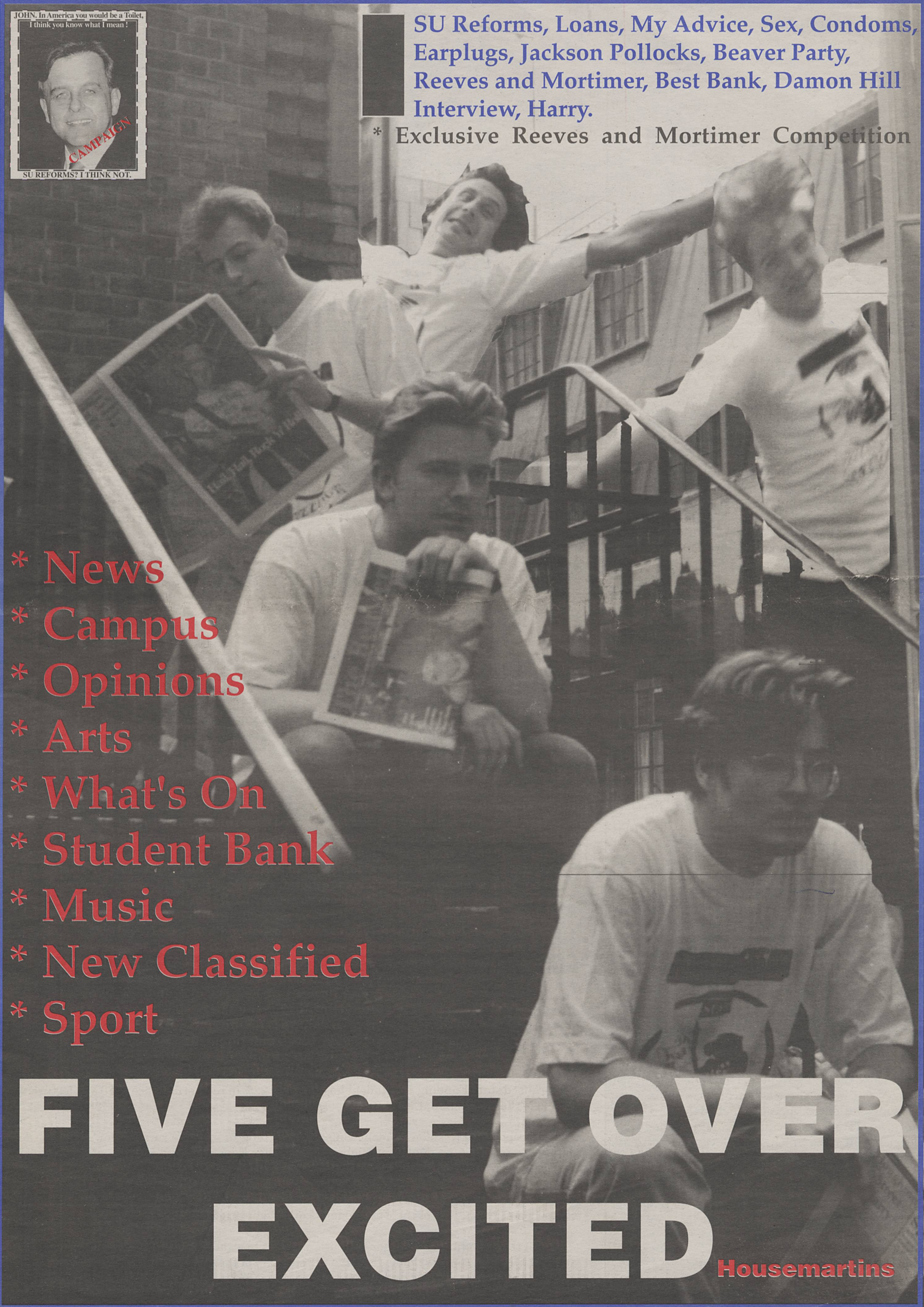
issue 381

THE STUDENTS' UNION NEWSPAPER OF THE LONDON SCHOOL OF ECONOMICS



SU Reforms, Loans, My Advice, Sex, Condoms, Earplugs, Jackson Pollocks, Beaver Party, Reeves and Mortimer, Best Bank, Damon Hill Interview, Harry.

* Exclusive Reeves and Mortimer Competition



- * News
- * Campus
- * Opinions
- * Arts
- * What's On
- * Student Bank
- * Music
- * New Classified
- * Sport

FIVE GET OVER EXCITED

Housemartins

Take My Advice

In a series of articles Peter Harris discusses the Students' Union. Last year he was the Union's first Equal Opportunity and Welfare Sabbatical, and has been the Chair of the influential and controversial Democratic Socialist Group (DSG).

The Political Direction of the Union.

I am not using my own advice because I am no longer the Union's Equal Opportunity and Welfare Officer. However, I am not sure that I ever used my advice in the first place.

Last year, the executive was just not a team. This year we have a great opportunity. A Sabbatical team that should survive without excessive infighting. An Executive with a mandate for change in the Union. Teshar Fitzpatrick could be a remarkable General Secretary, but only if she honours her election pledge to represent the whole Union (Women, Men, Hockey team, Rugby team etc).

Of course, she might choose to surround herself with her ultra left supporters who cheered so loudly on election night. In the lonely and isolated sabbatical life she could retreat back to the comforting support of a clique. Nothing would be more damaging for the Union. What we need is broad consultation to establish an agenda for all LSE students, not just the ideology of the Far Left.

It would be a complete disaster if Fitzpatrick pursued a vendetta against her old enemies in the AU and the Beaver. The Beaver like the rest of the Union is in need of democratic reform, and I hope to provoke considerable discussion about this, but I would advise the General Secretary to not get dragged into the personality battle that the Beaver started last year.

A brief political history of the Union describes how the Labour Club (in fact dominated by the Far Left) ran the Union up until 1991 when they were ousted in a democratic revolution: the landslide of the Democratic Socialist Group (DSG). This triumph by the centre-left broke the mould of Union politics. In 1992 the Union accidentally drifted to the centre-right with the victory of "Independent" and "Umbrella" "personalities".

The current sabbatical team is the counter revolution to this. My interest, in the long term development of the Union, is whether we are now back at square one with the Hard Left back in power.

Two things can happen. First, the new team can follow the consensus approach that I advocate and move the Union gently back to the left. Secondly, the new team can take counsel from the most militant members of the community. The second scenario is disturbing because it will turn out to be a waste of time and a repeat of history. If the complacent hard left come to dominate our Union again, they will be unceremoniously thrashed once more. The Union will be chasing its tail in a strange kind of "perpetual revolution". The impetus for this perpetual revolution is observed by sad people who stick around for more than three years (i.e. me). The DSG won on an anti-SU (anti-Hard Left) vote. They were then thrown out on an anti-SU (anti-DSG) vote. Their successors, the centre right "personalities" were then thrown out in an anti-SU (anti-incompetent) vote. This revolutionary fervour, fuelled by the rapid turnover of students, detracts from serious long-term development of the Union. With Government threats to automatic membership it is more important than ever that our Officers think long term and overcome petty loyalties. Finally, it falls upon us, the members, to stop assuming that sudden change in the ballot box is, in itself, a panacea.



Under Patten's proposals Rag Week becomes defunct.



Drama isn't in the core so we'll have Drama no more.



Rag Week money is given to charity, Patten's plans will put an end to the valuable help students give every year.

FOSTER CONDEMNS STUDENT UNION REFORMS

Commenting to the Student Media on the Government's proposals to change the funding and membership arrangements for Student Unions, Don Foster MP, Liberal Democrat Education Spokesman, said

"Higher and Further Education face innumerable difficulties; a huge backlog of repair and maintenance, worsening student debt and hardship, overcrowded lecture theatres and demoralised staff. Funding per student has fallen by 22% in real terms since 1979 and lecturers pay has fallen by a similar amount."

"The proposed attacks on Student Unions do nothing to improve services for students, do nothing to improve the quality of Higher and Further Education and will do nothing to help restore the tarnished image of the Government

"They are nothing more than well gnawed bones thrown to appease Tory backbenchers, deeply concerned at the failure of the Government's other educational reforms."

"And if the Secretary of State for Education wishes to attack the misuses of public funds, he should be looking closer to home first. It's the old story of the pot calling the kettle black! After all it wasn't Student Unions and the NUS who wasted £35 million on the schools testing fiasco this summer"

Patten's Axe

The Government has recently proposed sweeping reforms of Student Union funding, Kevin Green focuses on what is a very real issue and a very real threat.

Legislation proposed by the government on reforming the funding structure of Student Unions all over the country were announced this summer. It

must be stressed that it is merely coincidence that these proposals have been rushed through at a time when all students are on their longest vacation. But the underhandedness of John Patten is not the main concern facing hundreds of thousands of students. What is at stake is your Student Union, your societies, your welfare services, your newspaper, your finance and your life as a student. And it really doesn't require close examination to see that the whole proposal is merely a poorly veiled attempt to silence NUS, and this can only be achieved through the individual students.

It seems that whatever the consequence, whatever the effects, that the government will stop at nothing to eradicate the NUS, an organisation that supports and campaigns on behalf of thousands of students. In the words of Lorna Fitzsimons, NUS President, the proposals are "a sledgehammer to crack a nut."

Although the proposals are still undergoing consultation, the reform package outlined by Mr. Patten currently stands as follows:

1) Place all but a core of campus union activities on an opt-in, voluntary subscription basis.

2) For core services, retain universal access and the availability of public funding.

3) Avoid public funds being used for affiliation to external organisations such as the NUS.

4) Introduce institutional codes of prac-

tice governing conduct of campus unions.

Although these proposals seem somewhat vague, the major talking point has become the definition of 'core' Union activity. John Patten has identified Welfare, Catering, Sport, and Representation of student interests within the institution as fulfilling the core requirement. It is quite clear what will be provided under the new proposals: what seems to have been neglected is what is excluded, and consequently eliminated, by Patten's narrow definition of core activity.

Of course, any union activity not supported as a core activity can only continue through the use of non-public funds. Basically this shifts the financial responsibility of non-core activity to the students who wish to take part. The reality is that students already heavily invest in Union activities, through subscriptions to societies and entrance fees to Union events. This only highlights the effect of the current under-funding of Student Unions, perhaps Mr. Patten should consider where, from the individual students funds, this extra finance for basic services will come.

"a sledgehammer to crack a nut."

As they proudly announce, during the three year period ending in the 1992/93 financial year, loans to the value of some £380 million had been issued to 700,000 students. By the end of this academic year that figure is expected to rise to nearly £440 million. According to a recent independent survey conducted by Barclays Bank 80% of all students in the UK ended this academic year owing an average of £1,672, nearly 22% higher than last years figure. Students graduating from university this year can also expect to be at least £2000 in debt, and these are average figures: we can expect those for

central London to be much higher in reality.

Are these figures that we should really be proud of? And, more importantly to Mr. Patten, are these figures that suggest that students have substantial reserves with which to fund basic campus activity?

Perversely these facts remain a side issue; the areas of student activity which will become excluded from funding require scrutiny, and this is where the real farce becomes exposed. Under Patten's proposals Student Unions will no longer be able to fund:

- *Student drama
- *Student community action
- *Rag Week
- *Student Media
- *Nurseries and play schemes
- *Many other non-sporting student clubs and societies

Commenting on this, Lorna Fitzsimons said:

"Much of student union activities are community spirited and educational. Students learn so much from their work with societies, with student community action, with play schemes, with student media and the whole community benefits from their work. There's nothing subversive or politically dangerous about Rag week or the drama club or the student radio station and newspaper or the half-term play-scheme. Patten has accepted sporting activities but refuses to acknowledge the good of all the other community spirited work of the student union."

It is not a valid that the government are concerned about the spending of public monies through student unions. We are already restricted in the use of our funds by the ultra vires laws which apply to all charities, of which LSESU, through it's association with the University, is one.

In addition our constitution, which



John Patten has exercised his total lack of understanding of your Student Union. The governments proposed reforms are a threat to every Student Union in the country.

dictates democratic procedure, must be passed by the relevant University council who are the most appropriate body to do so because they provide our funding.

There's nothing subversive or politically dangerous about Rag week or the drama club or the student newspaper or the half-term play-scheme.

On our own future I am dubious, this is perhaps the biggest threat to Student Unions since their creation. The Beaver has existed at LSE for over 40 years now. Our central aim is not politically subversive. A major number of students are involved in our weekly production,

and they readily and repeatedly give up their time to produce something which is interesting and informative to the students of LSE. Those involved gain valuable experience and genuinely enjoy producing the newspaper. We believe that student media should be a core activity as it provides a vital role in communication, in internal representation, in welfare information, and above all an educational life. But it is everything that student unions do, including media, which should be described as core.

Along with NUS and our student union we urge you to get involved in the campaign to fight for the survival of these vital student activities and the right to national representation, which will be lost if we all lose the voice which we have through NUS.

"Everyone in this country has the right to national representation, why should students be different?" LF

John Patten has asked for every Director in the country to respond with their opinions as to what should or should not be funded from public monies by **November 1st**. Please take this opportunity to do something to safeguard your Student Union and the services it provides by signing the letter on the following page and returning it to the Beaver office in E197, in the East Building, or simply by placing it in one of our new post-boxes attached to the collection bins; we will forward them all to the Director and await his response.

Don't let Patten destroy your Student Union. Sign and forward the letter to the Director over the page and urge him to support our campaign.

Student Desperation Loan

NUS reports on Student loan 'take-up' and analyses the results.

The Department for Education (DFE) has recently published a statistical bulletin on student loans which contains some revealing information on loan take-up during 1991/92 as well as some comparative data with 1990/91, the first year of the scheme.

The DFE estimates that 261,000 students took out loans in 1991/92 (36 per cent). This is a marginal increase upon 1990/91 when take up was 28 per cent. The average value of loans taken out in 1991/92 was £533 - 92 per cent of the maximum loan for a full year student outside London (£580). Indeed, the Student Loans Company reports that 99 per cent of those issued with loans in 1991/92 took out their maximum entitlement. This suggests that those who do take out loans do so from financial desperation rather than because they view the loan as a 'top-up' facility.

Monthly pattern of take up In both years during which the loan scheme has been running there has been a cyclical pattern of take-up over the year, with peaks at the end of each term. For both years, the highest percentage of loans issued was in December (13 per cent and 19 per cent respectively). During 1991/92 the cyclical pattern was less pronounced with the number of loans issued falling off during the third term.

Regional variations

In 1991/92 student loan take-up rates in Scotland, Wales and Northern Ireland were lower than the average for the UK as a whole. Otherwise, there was little variation between regions: the North, North West and Yorkshire and Humberside had take-up rates slightly above the national average (43, 41

and 43 % respectively). The lowest regional take-up was in the South East (31%) whilst the London rate (35 %) is below the national average, despite the higher rate of loan available.

Type of residence

In 1991/92, there was a much greater incidence of loans take up among students living away from home (39 %) than among those living at home (16%), presumably reflecting the increased living (especially accommodation) costs of those who live away from the parental home.

Age

There was marked variation in loan take-up by age, with the highest take-up rate amongst those aged 21-25 (71 % of this age band) and aged 26-30 (49 %). By contrast, the lowest take-up rate was

amongst those aged 18-20 (20 %). This suggests that, as predicted before the introduction of loans, mature students are suffering much more harshly from the effects of the present SFS regime especially the loss of benefits and are therefore being forced into taking out loans.

Gender

In both 1990/91 and 1991/92, there was a lower incidence of loan take-up among female students than among male students (the DFE estimate that the numbers of eligible men and women are roughly equal). In 1990/91, 23 per cent of eligible female students took out loans compared with 33 % of eligible male students. In 1991/92, take-up increased more markedly among women students. 31 % of women students took out loans compared with 41 % of men students.

These figures appear to bear out predictions which were made before loans were introduced that women would be more likely to be deterred from taking out loans, thereby incurring high levels of debt.

Repayment, deferment and default

During 1991/92, the second year of the loan scheme, 57,000 borrowers were liable for repayment (these would be students who had taken out a loan for only one year and had either completed or abandoned their course). Of these, one-third had applied for deferment on grounds of low income and 10% of those due to start repayments were in default (defined by the SLC as only two or more months' repayments). This latter figure indicates that, as NUS has consistently argued, the deferment threshold, set at 85% of national average earnings is set at too low a level. The high deferment rate, exacerbated by the recession, means that many borrowers have continued to accrue interest on loans taken out during 1990/91. By September 1992, a total of £8.4m in interest on

loans had accrued. Loan rates 1993/94 The rates of loan for 1993/94 have now been published and are as follows:

Full Year	
London	£940
Elsewhere	£800
Home	£640
Final year	
London	£685
Elsewhere	£585
Home	£470

(The categories London and Elsewhere refer to students living away from the parental home. The category Home refers to students living

at the parental home.) One change to the Student Loans Regulations for 1993/94 is that students on fast-track courses will be able to take out up to the maximum of the full year rate of loan during their final year, providing they attend the course for at least 40 weeks in the year.

Executive Contact:
Martin Lindsay
Staff Contact:
Anne Sims.

NUS

This Years Sabattical Team



Tesh Fitzpatrick (TL)
General Secretary



Justin Deaville (TR)
Entertainments



Leandro Moura (ML)
Equal Opportunities
and Welfare

Lola Elerien (Bottom)
Finance and Services

Photos: Steve East

The new Beaver Post Boxes located on the collection bins can be used for all correspondence.

We can also be contacted in our office E197 in the East Building 1st Floor. tel. extn. 6705

We are now on the School VAX system under the name Beaver.

Electronic mail can now be sent, we will run a page of tuition on how to do this next week.

Please sign and cut out the letter below in support of The Student Union's campaign against proposed reforms. It can be posted in the new Beaver post-boxes, found on the collection bins, or it can be handed in to The Beaver office in E197.

Dr John Ashworth
Director.

Dear Sir,

I understand that the Secretary of State for Education, Mr. John Patten, has requested that you respond to him concerning the definition of core union activities. I am very concerned that the government proposals will destroy much highly beneficial and community oriented work which takes place at LSE. To that end I ask you to object to his limiting definition of core services and to stress to importance and reason for inclusion of;

*All Union societies, not just sports. Societies in our union are all non-political, and have no subversive intention. Many exist to maintain a community spirit and to make overseas students feel part of LSE.

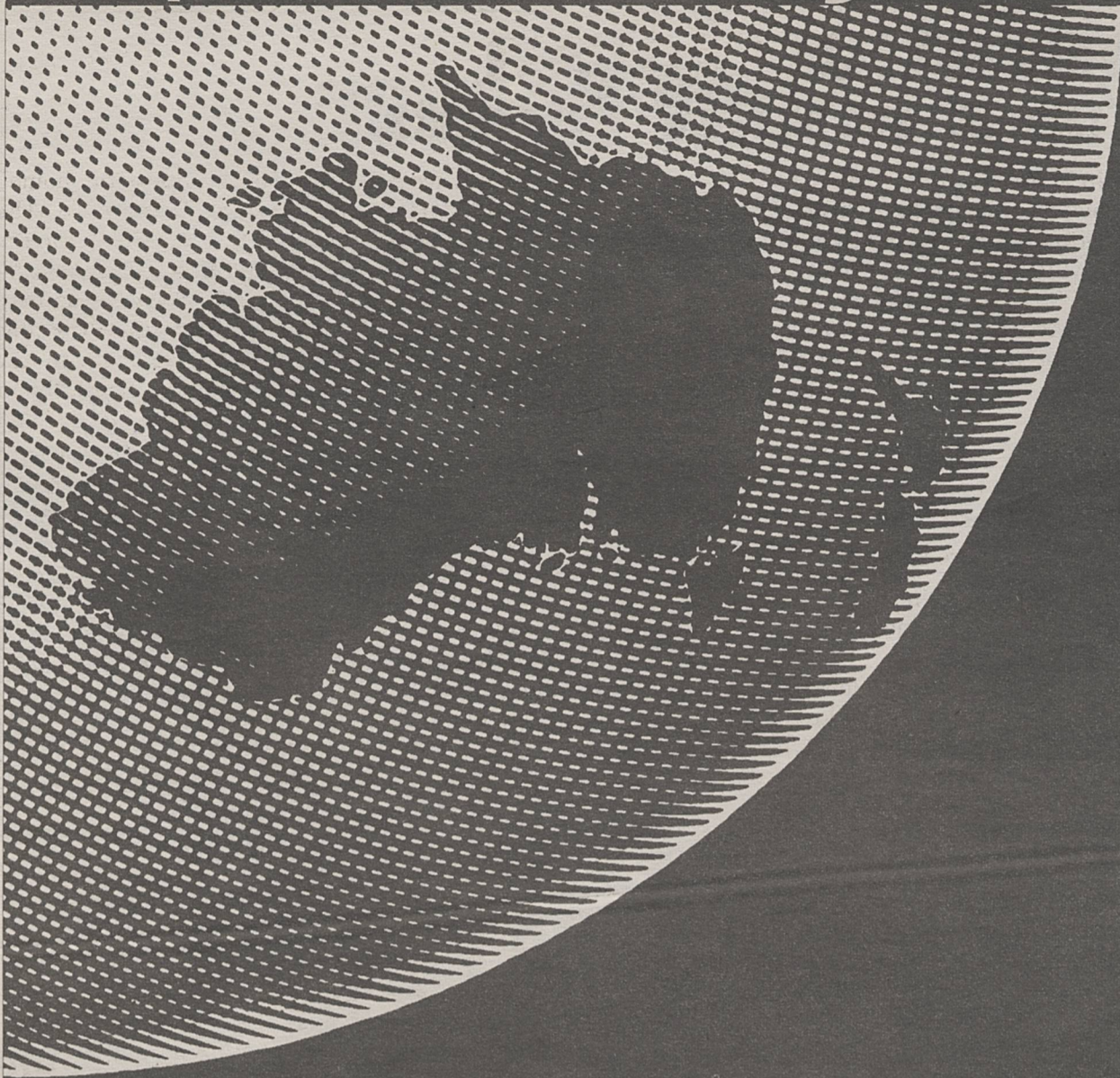
*The Rag committee (which raises thousands of pounds each year for charity).

*Welfare services such as nurseries and play-schemes which provide access for women with children wishing to further their education.

*Student media, which provides regular informative publications and furthers democratic procedures within the Union. It also acts as a mode of representation for students, and invariably has an input in matters of internal representation.

Thank you for your attention,

Yours faithfully,



**WITH
STA TRAVEL
STUDENTS CAN AFFORD
TO SEE IT ALL.**

London School Of Economics
East Building, WC2

ABTA IATA



WHEREVER YOU'RE BOUND, WE'RE BOUND TO HAVE BEEN. **STA TRAVEL**

AT THE BAR

This column interviews various students at the LSE who are doing something for other students. Hopefully not just hacks with ego's. However this weeks drinker is Kevin Green, Editor of The Beaver.

What are you drinking, now the Tuns has a new range of beers?
Bass!

How was Italy?

Thanks for asking Ron. Yes I did win a competition to go to the Italian Grand Prix as a VIP guest, and yes it was the highlight of the summer: I'm the one with the fluorescent Camel Holdall who's scrounging a cigarette.

Were you always coming to the LSE?

No, I nearly went to Loughborough, although God knows why? I had a year off, did the usual 'Inter-Rail', nearly got engaged and worked for Bernard Matthews. I think it is beneficial to take a break from education for a while, and to work for an organisation which slaughters turkeys by the truck and has a fat, ill-tempered country bumpkin as its figurehead come to think of it. Bootiful!

Music?

Bros, Take That, New Kids On the Block and Kylie Minogue, and if you believe that then you'd believe that; the Tories are good for Britain, that England will qualify for the World Cup, that Neil Andrews isn't bitter, and that The Beaver will one day have a sabbatical editor.

What pisses you off?

I think nearly everything pisses me off, but that's quite positive because I'm really happy when I'm not. In particular I hate people who are 'right-on' for the sake of it, and to the extreme. The newspaper pisses me off regularly.

And people saying The Beaver is unrepresentative of students?

I say well spotted. Well done. Have a medal. Pass 'Go' several times. We make no disguise of the fact that we would like the newspaper to cater for a wider audience, but it all comes back to the initial input. Changes are being made, but it seems that these very same people (who should be added to the list above) refuse to acknowledge any progress, and would prefer The Beaver to fizzle out rather than improve. We have the ability to provide a useful service, and with help from the student body, and a little less hindrance in the form of the 'them and us' attitude adopted by the Student Union which begrudges The Beaver every penny of it's budget, I am sure that representation, participation and inspiration will improve.

The Beaver is SU financed, should they have editorial control?

I consider it mandatory that the Student Union finances a newspaper for the masses. In many circumstances it is the only way that students at LSE can understand what is going on in the Union, and what is happening at LSE. In a very large sense we are an effective safeguard against abuse of power. That alone is surely reason enough to maintain editorial independence. The Union isn't some Godly creation which has sole right to determine. It is a service provided by students for students and as such must remain accountable. There are no grounds for any intervention at all, as long as The Beaver constitution safeguards against libelous action, and remains accountable itself.

What are your plans for The Beaver?

Hopefully anyone here last year can see some of them already. The Beaver has been on a slippery slope for some time and that is mainly because writers have almost become extinct. But we have some new blood now, and all of the changes which I have made over the summer, such as substantial investment in new technology, mail shots and a general blitz on advertising are all aimed at broadening our student base. There are new and revamped sections in this issue, and I want to make The Beaver useful to LSE students, and in particular a wider section of students. It feels like a crusade JD, but it really is about encouraging people to help

You were a fresher when elected Editor, was this an advantage?

No, it means that I will have become totally exhausted and resign soon when I finally go mad.

And how soon will this be?

Fish..

When you leave what do you expect The Beaver to be like?

No you can't have my job yet Ron. Soon.

Thanks Kev! It's Thursday night. Let's go to work!

Busy Beaver is back! (Swing?)

Hopefully, this is where the dirt is dished! Every year we long for gossip, tittle tattle and hear say. Anything that other students may have not heard about. If you're in a hall, let me know what's going on and who is wandering around at 4.00am. If you're in the Tuns, in fact, wherever you are and someone from LSE makes a prat of themselves or is seen with someone they shouldn't be, drop me a line, either on our new VAX/ E-Mail address, the letter boxes on The Beaver bins or the internal system, via SU reception.

Anonymity is assured and the names will be slightly changed to protect the guilty. This column lives or dies by its contributors. Most would love to see it die, but lets keep those in the public eye in the public eye. We have little to say today as there's been nothing going on over the Summer and anyway if there was it's old news. So everyone should be on their guard.

Busy Beaver is back!!!

Sound Gripes?

So Plug it!

Spending a year in Hall might be most students idea of fun. But it's one thing to be able to mix with over 200 students in a sweaty close environment, but Gun's and Roses blasting out from your neighbours room on a Sunday before your first class presentation does not auger well for your academic progress. Spending a year out in the "real" world of bedsit land, brings its own problems of building works, traffic, more noisy neighbours and the sirens of the emergencies services. So to plagiarise Lenin "What is to be done?"

Yes, something must be done. Some students do come here to work and all power to them, this is after all a educational institution not a holiday camp, though sometimes it seems like it. Earfit plugs could provide the solution. When I was working be-

fore the LSE, earplugs were a necessary part of our work clothes and were provided by the Company as noise levels were over the legal minimum.

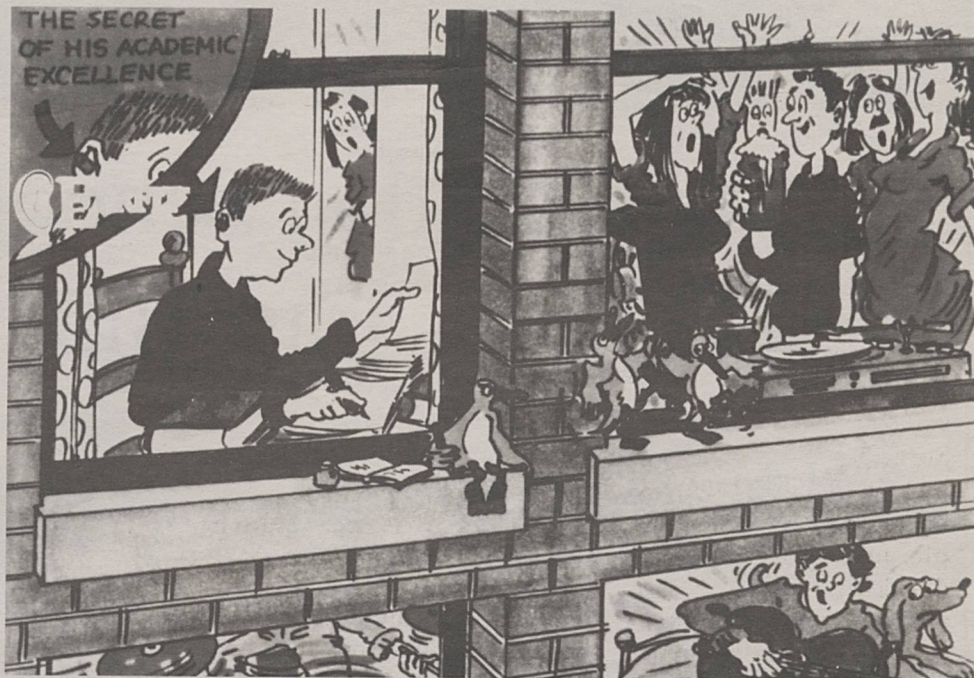
Damaging noise levels are lower than most people think, It's not just going to a Motorhead gig that damages your hearing, or is that brain! Earfit earplugs are designed to reduce noise levels, protecting the ears from a wide range of irritating and even more damaging noise. They are easy and quick to be fitted and, above all, comfortable to wear, even over a prolonged period of time.

The key to their effectiveness lies in the soft vinyl foam from which they are manufactured. Developed by the country's leading manufacturer of hearing protection devices, Cabot Safety, this unique material allows the plugs to expand gently in the ear to fit virtually any size

ear canal. Once fitted, they won't slip or shift, thus maintaining a good seal against noise.

The safe and hygienic Earfit can be washed in warm water and mild detergent, so that they can be reused a number of times for all you environmentalist out there. Even when your not wearing them, they even can be carried in their own handy pocket pack for those noisy episodes out in London, like the Tube or the street. They are even cheap to only £1.25 for two from most good chemists.

So what else do you need. No more excuses to your tutor about your neighbours making too much noise. In fact you should have no problems at all now. Except for not hearing your alarm in the morning because you still have the Earfit plugs in, and still arrive late. Try explaining that one!



Sex, Alcohol and a good old fashioned No!

"Britain's men long to be sexier, better looking and more stylish." Well they could have fooled me! It seems I'm missing out on life, love and romance because of the first impression I give. Well the whole dating games a mystery to me, but then again I've never really worried about it! If people don't like me, then that's not my problem, or is it, I like me and most people I want to like usually like me, but just in case your not as self assured as me, The Brody Study, compiled by Taunton Cider, may give you some answers.

You men out there should be extremely worried. It appears 60% of all women surveyed made up their minds about men within hours and 40% believe in love at first sight! Men, it seems believe that women prefer good looking intelligent men, because they believe they are more sexy. Yet 33% of women want to be more attractive. Can you really believe this, is it true, come on give me some feed back. But it doesn't stop here.....

According to the survey, this ritual courting mainly occurs in the environment of the pub. So hurry along to your local, preferably the Three Tuns Club (lets keep the profits within the SU) and let battle commence. Surely this cannot be the case, I mean I go to the pub to drink, not to check out the talent. I'd be too pissed to do anything afterwards any way!

Here's the instructions chaps, even ladies, after all this is the nineties. If you wish to "pull" (this is not a Beaver guarantee), here we go then. Your in the pub and make sure you pick the right drink. Sorry no advice there, just take potluck, and hope, because most people notice what your drinking rather than what your wearing. So, forget your well smart clothes and try and fig-

ure out what your prospective partners like to see you drinking, simple really.

So if you figured out the right drink and the right clothes, most prospective partners will notice your unwashed jeans and your tatty T-Shirt eventually, what's next. Well forget chat-up lines, they're crap. You've got a 50-1 chance and they aren't good odds especially in the Grand National of Life in fact it's a farce!

Here's a slight retrograde step. Your not likely to meet your dream partner in your local, if it has no atmosphere. Difficult to work this one out really. Everyone has there own views on this one, whether it is the "regulars" or the music on the jukebox, or the beer that gives the place that je ne sais quoi! Whatever it is, just hope your local has it or you're wasting your time.

I suppose most punters, for the want of a better name, the main fear is rejection. Not mine. My view is, if you don't ask, you can't get turned down. If you get asked the choice is yours. Am I being cynical, well probably, but if you do ask, try this to minimise the possibility of rejection.

If your not sexy (and who would admit that), try attention grabbing body language, but don't drop your jeans unless you've got clean underwear on. Dare to be different, wear something weird, drink something weird, but make sure it is what your prospective partners looking for (see above) or the change of drink would be superfluous.

With chat-up lines being undeniably useless, check out those odds above, just listen, and nod your head it works. Well you may get a punch in the head for being patronising, but a majority of women realise that it is only 30% of men that

use chat up lines, so there's 70% out there who may be the right one for you. In fact a majority of men and women wouldn't be able to come up with a credible chat-up line to save there life!

So what's the point. The point is sex, the chase, the beer, well everything helps you get on

in life. If you treat everything as an experience, you'll learn something new each day. Just remember this whether you are male or female. Your going to be here for three years, it's not the den of sexual debauchery that you may think it is.

In fact alcohol and sex do not usually mix. For

men it poses problems of stamina, you know what I mean lads. Whilst for women, it could lead to being taken advantage of. There's one golden rule on sex to remember in your stay at the LSE. Just because the beers doing the talking, you haven't necessarily pulled. You may get in-

vited in for a coffee, but this means NOTHING.

If you remember nothing in your years here, just remember this.....

A yes means YES! A no means No!



Only Heinekein could do this, but Smarties still have the answer!

Your best mate is a Condom on Campus

Do you get go red when you buy a condom. Are you a green when it comes to your sex life. Does sex make you blue. Or are you a purple purvey. No I don't care about your sex life but Mates do!

Mates Condoms have released their latest hits in September '93, just right for the new academic year. Forget subtlety- this vibrant, up front packaging is designed to make condom buying as simple as picking up the latest CD's.

To save hassle and embarrassment, each pack is brightly colour coded for easy selection, and clearly features the BSI

kite mark of quality control; which means these condoms are well SAFE! With a choice of three shapes- contoured, flared and straight, there is most definitely one to suit every

Tom, Dick and Harry.

The funky, new range now includes only their most hip and happening condoms: Natural (Red), naturally safe and sensitive; Contoured (Blue),

uniquely contoured for greater comfort; Super Strong (Green), stronger than average for greater reassurance and play, now coloured and ribbed for even more fun!

So while your at it, just give it a thought. Colour coordination can be fun and fashionable. Not only that, but Mates actively supports such organisations as the Health education Authority, Terrence Higgins Trust and Red Ribbon International to promote the practice of safe sex to young people. Be safe not sorry and remember Mates before Dates!



Now that's what I call protection!

Photo: Steve East

The Beaver

Yet another term beckons, but perhaps The newspaper is at its strongest and most capable for some time. We have heavily invested in new equipment over the summer, and are rapidly introducing new sections and spicing up some of the old. And why? It's all in an effort to attract more staff, to make time spent with us not only rewarding and educational, but also good fun.

But will all of this investment and effort be in vain with the news of new government proposals on Student Union funding. This is a big threat facing every student this year, and it is why we have launched vehemently into a defence of our Student Union. What really irritates me is the underhanded way in which the government has forced through these proposals at a time when most students are on vacation. Unfortunately for them the legislation has been held up temporarily because of the fierce opposition it has met from every quarter of its brief passage. If this wasn't the case then it would be unlikely that you would even have the chance of stopping the axe falling.

It is absurd to suggest that public monies spent on sport is acceptable, whilst money spent on; child-care for single parents, on the drama society and many other non-political societies, on Rag week which annually raises millions of pounds for charity across the country, on your student newspaper, are all unacceptable.

This misguided assassination attempt on the NUS must fail, and I urge your support most emphatically.

Weekly Meeting for Collective Members and all LSE Students
Mondays 6.00pm in C119
All Welcome, Please Attend.

Beaver issue 381 was put together by:
Kevin Green (Exec.Ed& News), Ian Turner (Man.Ed), Ron Voce (Campus&Arts), Rob Hick (Music), Neil Andrews (Sports), Steve East (Photos).

Executive Editor	Kevin Green
Managing Editor	Ian Turner
News Editors	Hans Gutbrod, Phil Gomme, Steve Roy
Campus Editor	Ron Voce
Arts Editors	Navin Reddy
Music Editor	Geoff Robertson
Sports Editor	Rob Hick
Photographic Editors	Neil Andrews
	Steve East
	Thorsten Moos
Financial Director	T. James Brown

Staff: Selman Ahmad, Jamsheda Ahmad, Caroline Barnes, Emma Bearcroft, Graham Bell, George Binette, Nigel Boyce, Matt Claxton, Adam Cleary, Mark Dantos, John Fenton-Fischer, Teshar Fitzpatrick, Nick Fletcher, Sarah Jane Gibbs, Gavin Gilham, Andrew Graveson, Louise Grogan, Kate Hampton, Justin Harper, Gerard Harris, Tom Kenyon, Steve Kinkee, Martin Lewis, Chris Longridge, Stavros Makris, Adrian May, Emmanuel Ohajah, Sarah Owen, Rebecca Perks, David Price, Tom Randell, Zaf Rashid, Mervyn Rees, Simon Reid, John Santa-Cruz, Matthew Smith, Jon Spurling, Ian Staples, Dave Whetham, Ralph Wilde, L. A. Wildethorpe, Faz Zahir.

Printed by;
Eastway Offset,
3-13 Hepscott Road,
London E9

Negatives by
Printronics,
75 Shelton Street,
Covent Garden.

Whoops.

Dear Kevin

I was surprised to read your comments in the Beaver today (issue 378), which in their generality reflect on the staff here, and in particular myself. I am wondering what we have done to deserve such reflection on your part? Most certainly if you can suggest to me why it is that I or any of my colleagues have "pissed" you off, and was your criticism justified, you will have my heartfelt apology.

As I say, however, I am astounded at the comments.

Denis Kellner, Office Manager, Butlers Wharf Residence.

Please accept my apologies to yourself for statements which were not justified. The comments were founded on certain experiences I have had with particular staff at Butlers Wharf, and in response to a letter from a Passfield resident; and may simply have been personality clash. Certainly it is true to say that the staff at Butlers Wharf, and probably all other Halls, are very helpful and much unappreciated in their work. ED

Spending Irregularities at Roseberry

Dear Sir,

I am writing to you because I would like to draw your attention to some irregularities in the spending-procedures of the current Hall Society Committee (now committee of 92/93 - ed.) in Roseberry Hall.

I am a resident there and have heard rumours that hall society money has been spent for dinner and nightclubs and parties dedicated to specially selected groups of residents in the hall. According to this information, Hall Societies' money has been used to fund events for students taking part in Netball and Aerobics.

Details of these exclusive and secret parties have not been published. Every resident in LSE's Hall's of Residence is required to pay a common

room fee each term, to be devoted to festivities/activities and open to the whole community of residents, irrespective of their participation in certain other events. This money is usually spent on parties and formal dinners etc. This year, however, there was no formal dinner provided from these funds - instead money was used up for the described events.

This committee will still be in power in the first term of the new academic year (this term - ed) and I think some action should be taken. As I have said, these are only rumours but I would be very concerned if they are true.

Klaus Rain Focleisch

Tories Withdraw Support for Chairman

The London School of Economics Conservative Association (LSECA) has withdrawn its support for its chairman Nalin Jayaratne, a member of the LSESU Executive, in the wave of his irresponsible decision to sign the emergency motion concerning "top-up" fees. Proceedings have been initiated for his dismissal, on the grounds that his action contravened official party line by supporting actions and occupations, rent-strikes, boycotts, and disruption of School activities, and a motion of no confidence has been tabled. It must be stressed that the action of Nalin Jayaratne is a blatant disregard of party policy, and this fact has been acknowledged by many former chairpersons of the LSECA and Conor Pickering, the national director of the Conservative Collegiate Forum (Conservative Students) Consequently, the LSECA dissociates itself from the individual action taken by its present leading representative and will ensure that his dismissal is carried out.

Hugh O'Leary

India and Abortion

Dear Sir,

In response to Fazile Zahir's article, 'In India they Abort Girls', I find it difficult to understand how she comes to the conclusion that, "Feminists have no moral standing from which to speak out against the selective abortion of girls." Surely the basis of feminism is the fight against gender discrimination.

She rightly points out that the decision to abort should be the woman's choice, what she neglects is that the decision to abort female fetuses is rarely the choice of Indian women, but of their society.

India devoted the year 1990 to the case of the girl child - what is desperately needed is education not condemnation. It will be a long process, but the alternative is the banning of abortion, and I believe we know the nonsense of that. Yet again abortion will become the backstreet practice it used to be, and yet again women will suffer pain, probable infertility and possible death at the hands of unqualified butchers.

Rebecca Noden
Anthropology department

Techno-Phobia

Dear Editor,

I am writing to you in connection with a study being carried out by the Information Technology Research Unit (ITRU) to establish some of the reasons why people are terrified of computers. We thought some of your readers may be interested in contributing to this nationwide survey.

Computers touch all aspects of our lives: home, work and leisure. It is rare to find someone who will not at some time come into contact with computers. More and more people are using computers on a daily basis. Most organisations and businesses both in the public and private sector are computerized. Schools, universities and colleges are rapidly introducing computer training into standard course syllabuses; employers are stating computer literacy as a basic

requirement for most job openings. Despite this rapid spread in the use of computers, quite a large number of people for perfectly good reasons are still put off by computers. The question is: why are people terrified of computers? There may be a number of reasons and factors. What do your readers think some of these are?

We would appreciate it very much if those readers who are in anyway terrified of the notion of computers could kindly drop us a line. It will be interesting to know what it is about the computer technology that makes them feel that way, and why they think they may not be capable of using the computer. Probably they should also express their views on what they think the computer technology is all about. Also we are very interested in hearing from those who managed to get over their initial fear of using computers and are now comfortable with it. What we want to know is how they overcame their fear. Please let's hear from you all soon. Please write to:

Dr. Clement Hope,
The Information Technology Research Unit, Suite 146, 2 Old Brompton Rd. London SW7 3DQ.
Fax: 071-5814445.

Illegal Exports

Dear Sir,

It has been brought to the Department's attention that some students could find themselves in the position of being persuaded, by inducements such as free travel, to become involved with the international transportation and importation of the narcotic drug Qat, which is a criminal offence in some countries.

The possession of Qat is illegal in all Scandinavian countries and the USA. In the UK it is not illegal to possess the Qat plant (*catha edulis*), but the main active ingredient present in the leaves (*cathinone*), when extracted, is a controlled Class C drug. Under the Misuse of drugs Act 1987, the penalties for the possession of Class C drugs are up to three months imprisonment, a £200 fine, or both.

Prison sentences in other countries may be more severe. The general effects from chewing the leaves of the plant are a feeling of well being, talkativeness, excitement and dryness of the mouth.

The British embassy in Oslo recently informed the DFE that a British student was arrested for attempting to smuggle Qat into Norway. The student has pleaded guilty to the charge, and he is likely to receive a sentence of 3 months imprisonment. He told Embassy staff that he became involved in the affair after seeing a card on a notice board at his college advertising free travel to Norway in return for importing the Qat plant leaves.

My purpose in writing is to alert you to the possibility that student's may be in danger of imprisonment if they attempt to import Qat leaves into some countries. If you would like more information about the legal position on the transportation of Qat please contact Sue Mitchell, C5 Division, Home Office, Queen Anne's Gate, London, SW1H 9AT. I am sending a copy of this letter to the Association of Managers

Secondly, while I cannot discuss details of the hearing, the case was of a very serious nature, and the School's representative (prosecution) did recommend severe punishments. For Mr. Harris to dismiss the threat of expulsion so casually is to mislead with mere speculation; even the Board did not know what punishment would be recommended until the afternoon of the second day of the hearing. From the point of view of the defendants, I would say that the worry of expulsion was quite real given the ferocity with which the case was pursued by the prosecution. The fact that only three of the group were proceeded against must have made the feeling of being scapegoats pretty acute, and given the serious nature of the incident, expulsion could have seemed like a possibility. Moreover, the lack of judicial discrimination on the part of the School in determining those who should be brought to trial suggests that the concern was image rather than what could actually be achieved.

Thirdly, it should be made clear that the distinct parties in the case were the School as prosecution and the defendants. The Board itself acts entirely on its own behalf, and in the capacity of both judge and jury. The welfare and concerns of both parties were always held in the utmost regard by the Board and the reason that the hearing was delayed was in fact to allow the defendants to gain representation and to get through the whole thing in one go as quickly as possible; this was an initiative of the Board. It is misleading to suppose that the School (i.e. administration) was anything more or less than a prosecutor. Thus, the welfare of the defendants as a concern of the Defend the LSE 3 campaign is almost a non-issue, and Mr. Harris is, in my view, misled in seeing the campaign as anything other than an awareness-raising exercise. Certainly, the campaign had no influence over any of the Board's decisions; the only people who could affect those were the people who were in the room at meetings.

Fourthly, to suggest that the LSE 3 campaign was a publicity or recruitment drive for the SWP

is just an example of Mr. Harris's political prejudice. The SWSS does not have anywhere near 1000 members at LSE, and it could not possibly be suggested that the majority of those present at the UGM which voted to defend the "LSE 3" were SWSS members. The campaign was, after all, official LSESU policy, and if it was dominated by SWSS members or gave an impression of martyrdom, that is the fault of the members of the LSESU executive. In addition, those who did campaign did not do so in an SWP capacity, and as far as I know, only one of the defendants is a member of SWSS. In its capacity as a campaign to raise awareness of the issues surrounding the case, I would say the "LSE 3" campaign has been a great success, and not an example of Students' Unions at their worst. If standing up for what you believe in is a bad idea then we might as well sit around and wait for another Hitler. I too, am glad that the whole affair is over and done with, not least because it means I can get back to my revision, but it should not be forgotten by any means.

Phil Jones.

I must point out that even though The Beaver is part funded by the LSESU, it is by no means controlled by them. Sabbatical officers only get space if what they have to say warrants representation, they can in no way influence what we print.-ED.

Letters to the Editor must arrive by 6.00pm of the Wednesday preceding publication. They can be posted in the New Beaver Post Boxes or Handed in to the Beaver Office in E197

OXFAM
PROUDLY
PRESENTS THE
LIFE-AFFIRMING
EXPERIENCE
OF 1993...

THE

19 NOV 1993

BIG
FAST

YOUR SPONSORSHIP FORM

OXFAM
Working for a Fairer World

THE BIG FAST

OXFAM'S challenge to you is to join - 'THE BIG FAST' - It may be the best meal you've never had! Get sponsored for the fast which takes place on Friday 19th November for up to 24 hours. -Also tell others why you are doing it - This includes lobbying your MP: Tell them why you are fasting and ask them to also support Oxfam's AFRICA MAKE OR BREAK campaign.

All over the developing world OXFAM is working with poor communities - supporting them in their efforts to grow enough food and helping them to meet their basic needs. For many communities this is a huge challenge to which with OXFAM'S support they can respond.

To Join this stand against hunger, simply ring 0865 313111 or write to:

John Palmer
OXFAM
FREEPOST
274 Banbury Road
OXFORD

Working for a Fairer World

Warner Bros. set to clean up in the West End!

Ron Voce goes West with the Warner Brothers

It had to happen, after all this is London. Yep 15 minutes into this PR extravaganza the worse thing possible happened, everybody was evacuated into Leicester Square, with their glass of champagne, looking extremely stressed. The staff in their brand new Warner Bros. corporate image attire seemed to have no idea what was up and they all disappeared into Leicester Square, only to be reappear as soon as the all clear had been given three police men, who were later seen having a sneaky drink of orange juice later.

Yes, we Beaver hacks were invited to the amazing launch of the New Warner West End, a cinema three years in the planning and two years in the constructing. The modernised art deco facade (spot the join, if you can, at the front) belies it's long heritage from it's roots as "Daly's Theatre", to it's rebirth as a cinema in Warner Bros. first overseas expansion in 1930. That cinema has now been completely modernised and has been pushed into the 21st Century, 7 years early.

The Warner West End is the flagship of the recent spate of new multiplex Warner cinemas in Bury, Newcastle-on-Tyne, Basingstoke, York, Thurrock to name but a few and there are more in the pipeline. But it is

to Leicester Square, the home of British cinema projection. Other

cinemas in the area, may have larger capacity, bigger screens, but they are not as modern, nor do they have nine, yes nine screens.

Our group was shown around the new cinema by Peter Dobson, Warner Bros. Head of Film Buying in Europe. It was only on this tour, harking back to the old Warner West End that you realise the technical feat involved in the new cinema. Height restrictions see 9 levels squeezed into space for less, yet less seems more.

The capacity of the 9 screens is just about 2,500, but the nine screens in capacity from around 130 seats to over 400. Because of the high turnover in films. Warner Bros. intend showing the same film on as many as four screens, to give the customer a varied choice of times and making it more convenient to just turn up on and see your favourite film. *The Fugitive* (see The Beaver review) opened last Friday on, as Peter Dobson said, 4 screens!

From the moment you walk through the front door from the ticket office, which is computerised, along with the whole building from a minuscule room in the bowels of the building, to the concessions stands the sight lines and escalators whisk you up



and down to whichever cinema your film is being screen on.

The cinemas themselves have a Spanish design of chair which is comfortable, functional and easily replaced. Disabled access is possible to all screens and help is provided if needed. The carpets are standard throughout the cinema, and to quote the architect "help hide the popcorn". You'll see what I mean when you go!

Projection can be either on 35mm or 70mm on screens 5,6 and 7. The other screens have 35 mm only, but you won't notice as the Digital Theatre Sound, THX sound and Dolby spectral soundtracks will keep you riveted to your seats, as the short sound trailer did before the start of the press conference headed by Warner Bros. President Salah M. Hassanein.

Salah M Hassanein, according to his biography, has a history with this institution. Born and raised in Egypt he graduated from the London School of Economics in Cairo. The conference started of on a jocular note with someone congratulating Warner Bros. for not succumbing to the Japanese. Hassanein replied with a droll dry witticism that "they hadn't made a good enough offer."

The rest of the questions inquired about Warner Bros. expansion

in Russia and Eastern Europe (nonexistent), the Far East (Yes please!) and Western Europe (Yes, Italy especially, but not France!). Projected growth over 5 years in Britain was set to double to 200 million visits to the cinema, with the Warner West End expecting to corner, in the first year alone, some 1.5 million visits.

These 1.5 million customers will expect very few exclusive showings, but the pricing policy is very competitive for Leicester Square. For all performances before 5.00pm Monday to Friday, the cost will be £4. At all other times it will be £7. Very reasonable indeed. Even so, that's still a lot of money for Warner Bros. but although the profits won't be used directly to fund the revival of the British film industry, it will stay within England for tax reasons and help further expansion into Multiplexes.

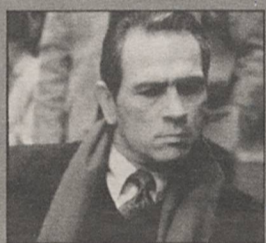
Well that's about it. I was mightily impressed. The other cinemas around Leicester square are going to have a serious rival on their hands for many years to come. The refurbishment of other cinemas in the area have not real modernised, but adapted themselves. The new Warner West End is going to remain at the forefront of British cinema design for many years.

KEEP ON RUNNING!

The latest summer blockbuster to hit the screens of the UK, is a "banker" for the new Warner West End, and should guarantee a large number of punters through the turnstiles of that cinema and many others across the country. A shameless action movie, "The Fugitive" - despite not being cinematically brilliant, challenging or ground-breaking - is worth watching and will certainly put bums on seats.

Harrison Ford plays Dr. Richard Kimble in a re-hash of the 60s TV series of the

same Kimble has an ingly ideal good job, a house and ful, sexy (Sela However, turn for the



name. a seem-life - a nice a beautiful wife (Ward). things worse

when Kimble's wife is murdered, and Kimble is sent down to Death Row at the state penitentiary for the murder. Kimble claims he saw, and struggled with, a one-armed man (Andreas Katsulas) who committed the murder - but the police and the court reject his plea.

En route to prison, the bus Kimble and other miscreants are in veers out of control following an attempted breakout by one of the prisoners. It ends up in the path of an oncoming train, and by the skin of his teeth Kimble escapes the carnage.

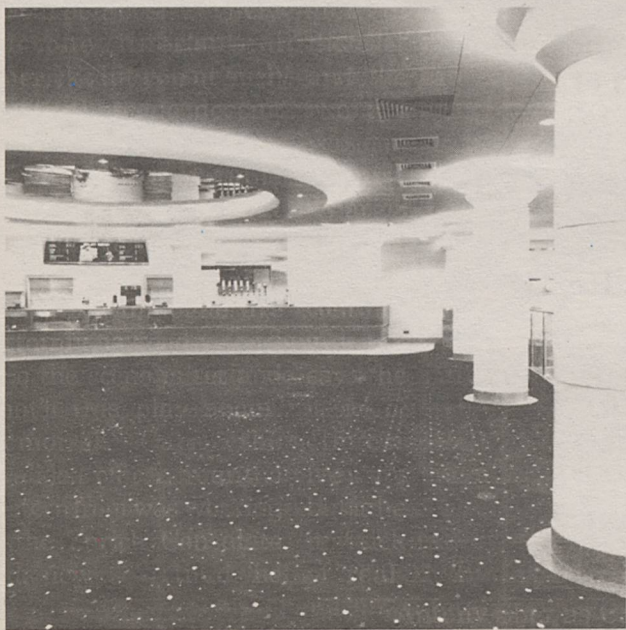


Kimble is presumed dead by the local police, but US Marshal Sam Gerard (Tommy Lee Jones) has other ideas and the search commences. Meanwhile, Kimble removes his beard, smartens himself up a bit, and sets out to try and find out who his wife's killer really is, and to bring him to justice.

A fairly typical chase movie is improved by a reasonably believable, though at times far-fetched and coincidence-laden storyline, and the obvious talents of Ford and Jones in this genre of film. There is some humour, which often seems redundant and "crowbarred" into the picture. The direction, production and editing is, as usual, tight - nothing remarkable, but not shabby.

At 140 minutes, the film may seem long, and is not helped by fairly pointless flashback sequences at the start and, to a lesser extent, throughout. But if cinema as an art form is not your cup of tea, and pure entertainment is, then you will surely enjoy "The Fugitive".

Rob Hick



 **National Westminster Bank**
We're here to make life easier

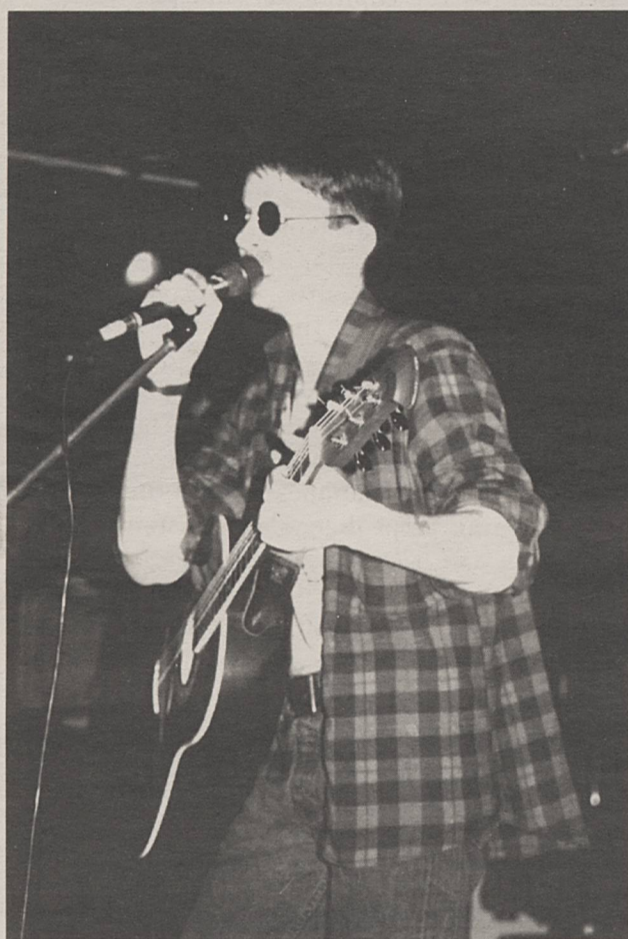
WE HAVE MORE BRANCHES WITHIN EASY STAGGERING DISTANCE OF THE STUDENT UNION BAR THAN ANY OTHER BANK.

Contact our Student Adviser and find out why we're offering a better service for Students.

Monica Grehan, Aldwych Branch, Connaught House, 65 Aldwych, London WC2B 4DS. Telephone 071 242 6294.

WHAT'S ON * WHAT'S ON

The Definitive Weekly Guide For LSE Students Covering All LSE & London Specials



Ruby Zoom, soon to release their first recording, are playing at The Dome, Tufnell Park Tube, on Friday 1st October. On stage 10pm, entrance £3, includes club 'til 2am

TUESDAY 28th

Comedy with
**Roger D
Paul B Edwards**

To help you relax on the first night of term there is comedy in the Quad, and starring are two of London's funniest comedians.

Roger D has a cheeky grin and a cheeky delivery. He is tall. He is good looking. He is funny. Unfortunately he is from Manchester. However, his observations on the Mancunian way of life are enough to blow away the most cynical of audiences.

Roger's roots are in the black cabaret circuit - a circuit that has brought through the likes of Lenny Henry. "Time Out" magazine has described him as "one of the most talented of the new generation of comedians."

Roger is currently writing comedy for the BBC and will be appearing in a new series in the autumn.

Paul B Edwards is a newcomer to the cabaret circuit, but he has already established himself as one of the country's most promising comedy prospects.

His style is quite surreal, but he mixes humour with intentionally poor musicianship to confound his audiences with



Paul B Edwards on Tuesday 28th in the Quad

professional ineptitude. He waxes lyrical about a number of diverse topics debauched fifties guitar heroes; Northern Europe's oppressed minorities and Sri Lankan bowling.

The Comedy will be followed by a Disco in the Underground. The bar closes at 12am.

**Tickets cost
£2.00 (£1.00
with a VIP
Discount
Card).
7.30pm
start in the
Quad.**

Wednesday 29th

**A night at the
Equinox, Leicester
Square.**

There will be a host of new students at the LSE this year who have never been to London before and this evening is a great opportunity to experience the delights of one of London's most famous night clubs the Equinox, Leicester Square.

Tonight is the launch of the Equinox's "Student Night." for 1993-4. It will probably be one of the best nights of the year at the Equinox and drinks are relatively cheap (about £1.50 per pint). Tickets cost £2.00 (£1.00 with a VIP Discount Card).

Thursday 30th

**The Amazing Geno
Washington
Hypnotist Show**

Geno Washington - the black American sixties soul singer and star of the Dexys Midnight Runners song - is touring the country performing nights of hypnotism. He is stopping at the LSE on Thursday, 30th September to contribute to our "Freshers Fortnight."

At the snap of his fingers Geno turns ordinary members of the audience into famous pop singers, or you could find two members of the audience acting like Captain Kirk and Mr. Spock and conversing in the language from the planet Vulcan.

The hypnotist show is devoted entirely to audience participation, so whether you want to have the inner recesses of your mind explored, or you just want to watch, you're guaranteed a great time. Geno Washington is a member of the British Council of Stage Hypnotists and the Hypnotic Circle, USA.

**Tickets cost
£2.50 (£1.50
with a VIP Dis-
count Card).
8.30pm start in
the Old
Theatre.**

NEXT WEEK: LSE EVENTS

NEW EDITOR NEEDED FOR THIS SECTION * NEW EDITOR NEEDED FOR THIS SECTION *

FIVE FREEBIES AROUND TOWN

Natural History Museum

Cromwell Road, SW7 (071938 9123). South Kensington tube. 10am-6pm Mon-Sat; 11am-6pm Sun. Go along after 4.30pm during the week, or after 5pm at weekends for a free hour and a half at the Mega-Bugs exhibition.

Highgate Cemetery

Swain's Lane, N6 (081 3401834). Archway tube. East Cemetery open by appointment only; West Cemetery 10am-4.45pm daily.

Museum of London

London Wall, EC2 (071600 3699). Barbican/St Paul's/Moorgate/Bank tube. Tue-Sat 10am-6pm, Sun 2-6pm.

ART

Bernard Jacobson

14a Clifford Street, W1 (071495 8575). Oxford Circus tube. Mon-Fri 10am-6pm; Sat 10pm-1pm. A retrospective of Ben Nicholson's paintings and prints shows here in October.

WHAT'S ON * WHAT'S ON

Pull Out Guide 1 - For Michaelmas Term 1993 - September 28th to October 4th

Friday 1st

All-Day Bar in the Three Tuns

If you've 'done' Freshers Fair and spent your grant joining every single society, then you'll be glad to know that there's a free band playing in the Three Tuns bar. The Three Tuns will be open all day, so why not pop in. Carr-Saunders Party

After a gruelling week, it's time to relax. The first

Carr-Saunders Hall party

takes place in the evening. There's a bar extension with reduced price drinks until late and a disco until 1.30am. Pay at the door.

recognized by the official Queen fan club and are set to release a single in the autumn.

Tickets cost £3.00 (£2.00 with a VIP Discount Card). In the Three Tuns. Bar open until 12am.

Limited numbers of tickets will be available on the day, so arrive early to avoid disappointment.

Monday 4th

Karaoke Carr-Saunders Hall

The first of its amazingly popular "Karaoke Nights" on Tuesday, 5th October Quiz Night



Comedy with Roger D in the Quad on Tuesday 28th

Time Out

MAGAZINE

Julie Emery, Time Out Student Guide Editor Writes A Regular Column For The Beaver

The best things in life are free Thousands of students come to study in London each year, despite the ridiculously high cost of rent, travel and living. Why? Because it's the capital city, buzzing with activity and full of culture and history. Yet a large proportion of these students will spend the majority of their leisure time either in the union bar or in the local pub, and finish their degrees wondering what all the fuss was about. Sure, all the big stars play Wembley; but £20 a ticket on a grant?

Even native Londoners are guilty of overlooking many of London's assets: the parks, the architecture, the tourist sites, the river, the museums and galleries, and the rites and rituals that are part of the English way of life. And making the most of them needn't cost you a penny

Try being a tourist for a day: queue up for hours to get into the Houses of Parliament and come out wondering what on earth Japanese tourists make of it. Spend a morning at Speaker's Corner listening to the soap box ranters; then marvel at the architectural inadequacy of the Barbican Centre while attending one of the free lunchtime jazz concerts. Or if you're in the Barbican vicinity on a weekday, the Museum of London gives you London's biography from prehistory to the present, complete with a gruesome reconstruction of a Newgate cell, art deco lifts from Selfridges and an evocative audio-visual depiction of the Great Fire of London. To avoid the school parties, go during the late afternoon.

Your itinerary on a tour around the City could include a trip in the lift on the outside of the controversial Lloyd's of London building, followed by a couple of hours in the Old Bailey's public gallery, and rounded off with a pre-booked tour of the Stock Exchange.

Take the tube to Archway and visit Highgate Cemetery, London's most exotic graveyard, where Marx and Rossetti are buried. Or spend a money-free day wandering around the British Museum; we recommend visiting the mummies in the Egyptian gallery and the reading room (at least). You could also spend a day in Trafalgar Square, taking in the National Gallery's collection of all the major European schools of painting from the thirteenth to the twentieth centuries, followed by a look around the most comprehensive survey of historical personalities through portraits in the world at the National Portrait Gallery.

There are ample opportunities in London to watch people making fools of themselves: Time Out's pages prove that the karaoke craze shows no sign of abating. And by writing to the relevant ticket unit for free tickets, you too could be one of the grinning idiots standing behind Bruno Brookes on Top of the Pops, or an enthusiastic audience member on Blind Date. Keep an eye out for offers of free TV show tickets in Time Out, and for free tickets for special Time Out film screenings.

Budding poets should consult our Poetry column for details of free readings and workshops, keeping an eye on the Books pages for information on free readings, signings and lectures around the capital.

This is a new page for this year. We need an Editor for this page. What's On will have a regular column by Time Out Student Guide editor Julie Emery. It will cover events at LSE and special offers/events in the capital.

If you have any events you want to publicise for your club or society then contact the Beaver Office in E197

Saturday 2nd

THE INTRO EXPERIENCE

This is the best bash in London this weekend and everyone will be there!

The hottest DJ's that London can offer join forces with bands from all over the country to bring the first week to an awesome climax. The main band will be "Closet Queen - a Queen tribute band who look, dress and act uncannily like their counterparts. They are

AND LONDON

*** NEW EDITOR NEEDED FOR THIS SECTION ***

Serpentine Gallery

Kensington Gardens, W2 (071402 6075). Lancaster Gate or South Kensington tube. 10am-6pm daily. Richard Wentworth's weird transformations of everyday objects will be taking shape here in January.

Five Freebies supplied by Julie Emery and Time Out

Time Out is published every Wednesday priced £1.40.

The Complete Guide to the next 8 Days in London.

News, regulars: Children, Gay, Classical, Classifieds.
 Reviews, Around Clubs, Music: Politics.
 Features, Town, Come S

HOW TO GET WHAT IS RIGHTLY YOURS!

AN EXTRA

10% OFF

403 6000

Did you know...

If you are in full or part time education, teaching or studying at college or university, you could qualify for the Apple Education Discount Scheme. This allows you special discounts on Macintosh computer equipment and kit.

What are you waiting for...?

Call **071 407 2882**

Dial now ask for either Brenda, Andrew or Adrian.



Pay by cash, cheque or credit card.

Credit terms available, subject to status.



**Authorised Apple Reseller
Authorised Education Reseller**

Apple and the Apple logo are registered trademarks of Apple Computer Inc. All trademarks recognised. Mac in the Box is a trading name of Waterloo Group plc. * Apple products by authorised outlets only. E & O E. Written details available upon request.

70 Newington Causeway,
London, SE1 6DF
Tel 071 407 2882
Or call in, no appointments
necessary. Open between
9am and 6.30pm weekdays

**MAC
IN THE**

BOX

American Art?

Cultural Imperialism?

Ron Voce goes modern with some artists from across the water!

American art! It doesn't make sense. I mean they have no heritage or so I thought. The Royal Academy, along with Merrill Lynch, The Daily Telegraph and American Airlines have decided to show modern American Art in London, where there are lots of US tourists, who can see their heritage in the splendid historical setting of London, which has heritage, even if it is very trashy and touristy.

Having overdosed in the vile Sainsbury wing of the National Gallery and all those Turners and Constables, they stroll up Piccadilly and survey the bollocks, oops Pollock's, Duchamp', Stella's and Lichtenstein's to name but a few.

Right where do we start. I suppose in the foyer and we bump into Mrs. Fenton-Fischer, mother of Beaver hack Jon, who was an immense help to me and even allowed me to view the other exhibition by Pissario, but that's another story, but before I digress further the

Pissario is worthwhile viewing before it finishes on the 10th October. But now for the meat and two veg. of the real meal.

I've read most of the other high brow reviews of the exhibition and I have to admit they go over my head. The guy I've shared a flat with all summer, waffled on about the "amazing Andre" and his floor tiles, but really it meant nowt to a yokel from Devon. However most of this "art" didn't go over my head and I even had a chuckle at an old couple saying they couldn't understand "all the fuss" over Pollack's 1943 'Mural', well I could, at least I think I could, and that makes it "art" I suppose.

One thing that always gets me about paintings like this is the sheer size, don't get me wrong I used

to have trouble planning a poxy sketch in art classes, so how the hell did Pollack see this amazingly sized painting from scratch. Talking of school and art I used to get a clip round the ear, when I painted a whole piece of paper black,

squares'. No wonder Van Gogh cut his own ear off when people did not appreciate his art, or was it just another reason for a little bit of self abuse.

Of course many of you will recognise the works of Warhol from his life size Elvis, his 25 Col-

Pop-Art was designed to be throw away, his "famous for 15 minutes" applied to his art as to everything else he did. I think the use of his works in an art exhibition may have brought a slight ironic curl to the lip of that otherwise straight face.

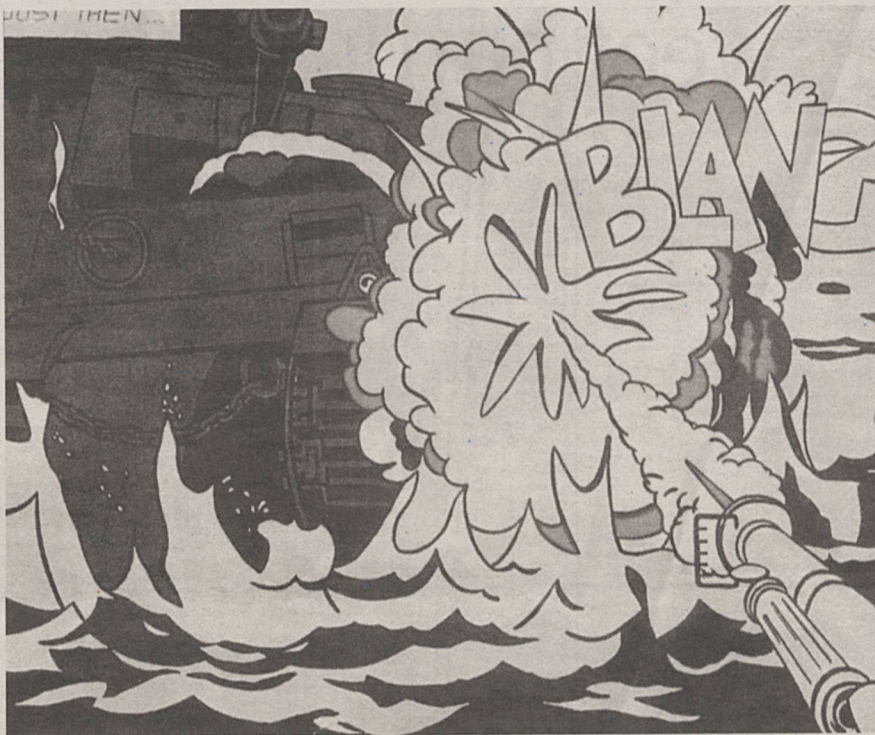
There's also Roy Lichtenstein, he of the famous comic strip paintings. His use of dots and bold colours and images bring a whole new meaning to my view of his paintings. First of all I never realised those "Well I guess he's working late in the office..." and "Blang" were art. I thought they were from cartoons, but

genuine American consumer culture.

As in all exhibitions, there are bound to be things left out and most of the other reviews I have read have criticised the choice of exhibits, but as the majority of visitors to the Academy, no offence, wouldn't know a Koon from a De Kooning, they visit the academy to see art and that is what they see.

From the early works of Man Ray, who to most of you philistine is probably remembered as the person mentioned in the eponymously titled song by China Crisis, to the later works of Graham and Brofosky up at the Saatchi gallery at Boundary Road (free bus service provided), this exhibition is well worth the £4 student price.

So now you've made it to this place of excellence go and get some culture at the Royal Academy before December. You'll love it!



where as Ellesworth Kelly's 'Black' is heralded as a masterpiece as is his 'Black' square surrounded by two white

oured Mariylins and the magnum opus of American Imperialism the 210 Coca-Cola bottles. I always thought Warhols

you always knew they were American and none of these exhibits could be anything else, as the majority are based on

Memories of a Nonentity!

Sher brilliance at the Barbican reports Harold Larwood

What do you get if you have an Englishman, an Irishman, a Russian and a Romanian, in a library in Zurich in 1917? How about *Travesties* by Tom Stoppard. As a historian you often wonder what would have happened if certain people had met, what would have changed.

Could anyone other than Marx have influenced Lenin? Could Lenin have influenced the Dadaist, Tzara? Did Joyce, whilst ruminating on his opus *Ulysses*, bump into either of the above in library. Who knows, but what if they had.

One thing is certain Joyce, the Irishman, was

sued by the Englishman, Carr, over the cost of a pair of trousers, whether the others met who knows and Stoppard probably doesn't care. He's written this play of verbal pomposity where the one liner's and limericks hit you at such a rate that one doesn't know whether to laugh or wait for inevitable riposte. *Rosencrantz and Guildenstern are Dead* this is not but it's delivery and dialogue are certainly as good.

So the scene is set and what's this play about. Memoirs! Carr the invalided officer from the western front was working in the Zurich Consulate and, now retired, he

reminisces on Joyce, Tzara and Lenin, though Lenin comes through belatedly in the second act. There always appears to be two or more versions of history.

The version of the teller and the real version.

But what is real? Tzara continually says "he is sick of cleverness", but is he just sick of real-

ity. Who knows? What was the difference between Lenin reciting Marx, and the rise of the proletariat, Joyce reciting limericks and

quoting lines thrice and Tzara, going gaga for being dada! The only sense seems to come from the calming influence of the women

in the men's lives and although their roles are not as demanding, without the presence a large gaping hole would appear

Whilst amongst this we have the young Carr, bouncing around in a remarkable form, suffering flashbacks of shell shock and the trenches, yet still maintaining his absolute Englishness in the face of his admirable Butler, who appear to know more about what is going on than Carr himself.

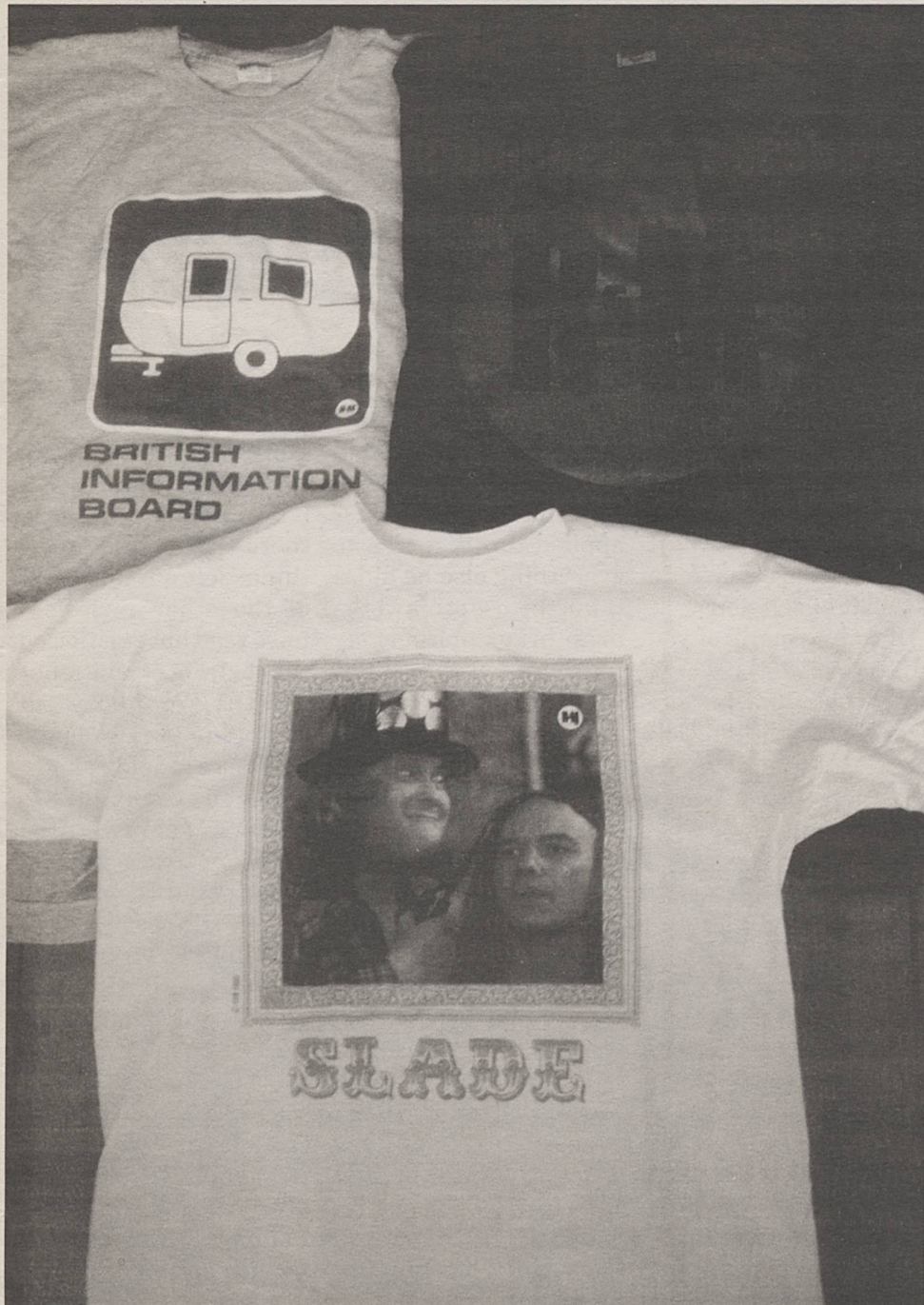
Carr, is played superbly by Anthony Sher, and rarely leaves the stage with others coming on in dream like flashbacks. Sets are

limited to Carr's front room and one grossly over painted red Library. But the red could just be the symbolism of the revolutionary fervour in Zurich in 1917 or it could have been a job lot!

You've probably guessed by now that an excellent revival has been brought to the Barbican stage. Apart from Sher, the remainder of the cast are, if not equal to the task of their parts, but better and with Sher in the lead and Stoppard's exotic script, the West End will be losing customers to this production for its entire run.



Anthony Sher as Carr in *Travesties*



Reeves and Mortimer Competition

WIN
Jackets
T-Shirts
Freebies

Simply jot down the answers to the following questions (Entries only on this entry form) and hand your answers into E197, or post them in the new Beaver Post Boxes

- 1) Where is the great wall of China?
- 2) Where is the Berlin Wall?
- 3) What is Reeves and Mortimers favourite mode of transport?
- 4) What is the best student newspaper at LSE?

Tie-break:

How long is a piece of string? Discuss? (no more than 20 words)

A piece of string is.....

.....

.....

.....

NAME:.....

DEPARTMENT:.....

THE EDITORS DECISION IS FINAL

REEVES AND MORTIMER OFFICIAL MERCHANDISE

BRITISH INFORMATION BOARD T-shirt (green and white on grey)

Slade T-shirt (full colour on white)

R&M Logo T-shirt (green on black)

Onions T-shirt (orange and red on white)

Bra Men T-shirt (full colour on black)

MA-2 Flying Jacket (white on navy)

Ski Hat (white on black)

Set of four button badges

ORDER FORM SEND TO: R&M Mail Order, PO BOX 3149, LONDON NW10 3DF

I wish to pay by: (please tick)
 Cash Cheque Postal Order Access Visa

I Authorise you to debit my Access/Visa Account with the amount of £ _____ Expiry Date: / /

Card No: _____

Name: _____

Address: _____

Postcode: _____ Telephone: _____

CREDIT CARD HOTLINE: 081-459 3556
 Please make Cheques, Postal Orders or Giros payable to R&M Mail Order in £ Sterling and write Name and Address on back of cheque.
PLEASE ALLOW 28 DAYS FOR DELIVERY

	L	XL	Total QTY	Price	Total
Slade T-shirt	<input type="checkbox"/>	<input type="checkbox"/>		£12.00	
Bra Men T-shirt	<input type="checkbox"/>	<input type="checkbox"/>		£12.00	
R&M Logo T-shirt	<input type="checkbox"/>	<input type="checkbox"/>		£12.00	
Onions T-shirt	<input type="checkbox"/>	<input type="checkbox"/>		£12.00	
B.I.B. T-shirt	<input type="checkbox"/>	<input type="checkbox"/>		£12.00	
MA-2 Flying Jacket	<input type="checkbox"/>	<input type="checkbox"/>		£48.00	
Ski Hat	<input type="checkbox"/>	<input type="checkbox"/>		£8.50	
Set of Four Button Badges	<input type="checkbox"/>	<input type="checkbox"/>		£3.00	

Please add packing cost:
 Order Value up to £16.00 £1.00
 Between £16.00 and £32.00 £1.90
 Over £32.00 £2.50

Cost of Goods
 Postage
 Total Enclosed

The Beaver

Requires For 1993/94

- *Writers**
- *New Section Editors**
- *Production Assistants & Editors**
- *Photographers**
- *Suggestions**
- *Participation**

There is a weekly meeting for all collective members and LSE students

**Mondays
6.00pm
C119**

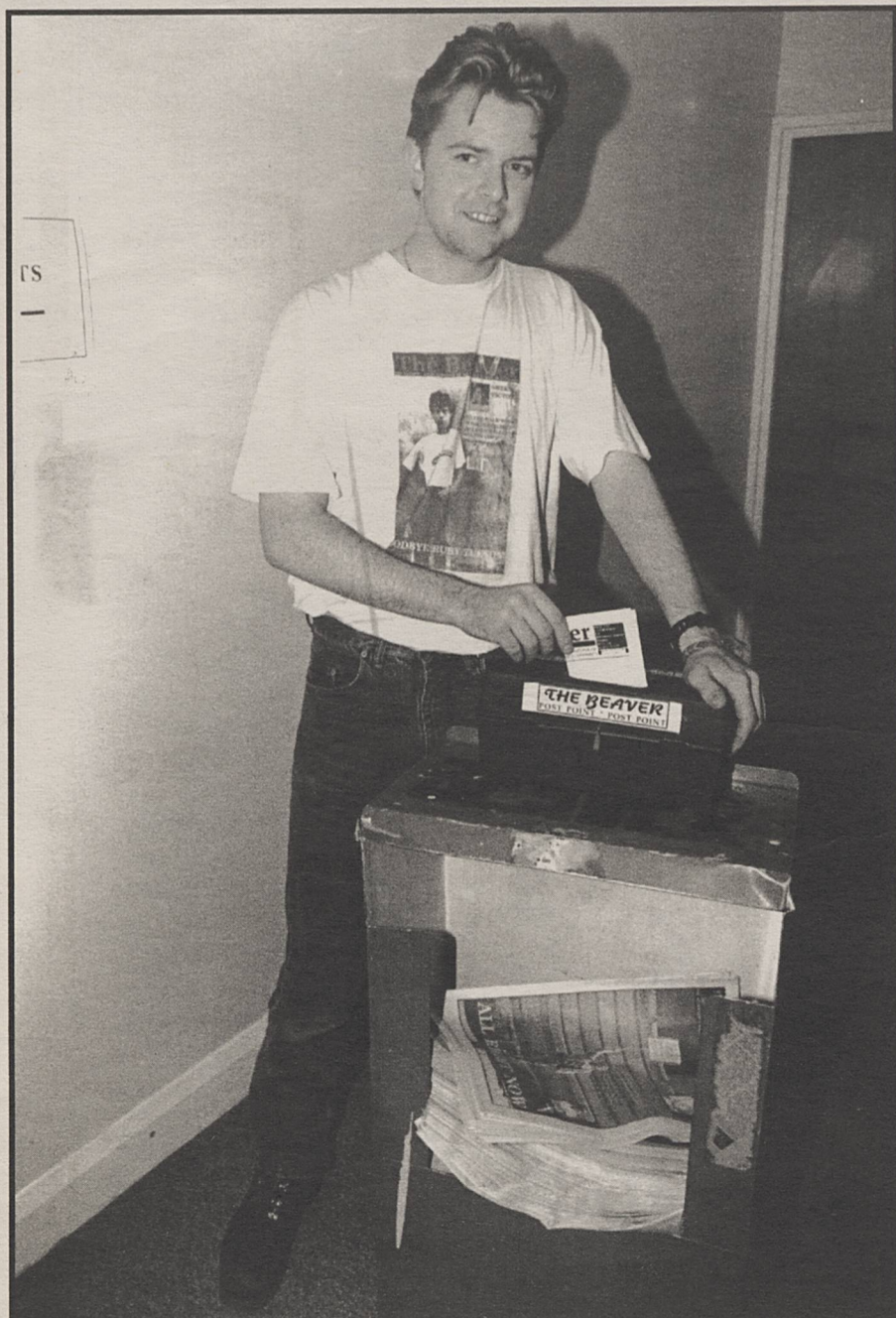


**PARTY
*THE EVENT**

**Free Drink, Free Music, The Underground
Second Week of Term**

**All Freshers who sign up with us at our stall during
Freshers' Fair (no fee!) will receive a FREE ticket.
WHAT ARE YOU WAITING FOR?**

**It's New, It's Weird, It's Different
It's the Beaver Post-Box**



Use them for
fun,
Use them today,
for all
communications:

Letters to
the Editor

Classifieds

Busy
Beaver

Comps.

Campaigns

It's as easy as
1

It's that easy, just pop it in the box. Photo: Steve East

A Marriage Of Convenience

Nancy Hodgson, working on work experience for The Beaver, analyses the new student bank accounts on offer this summer.

Unlimited wants and scarce resources could aptly describe the financial situation facing L.S.E. and other students at the start of this academic year. Students of Economics might well be able to recognize the nature of the problem but some financial analysis is needed to spot the worst and best deals on offer to students by the major Banks and Building Societies and to see behind the glossy packaging to the costly

pitfalls which lie at the back of the deals on offer.

The award for the worst deal on offer must surely go to the Northern Bank. Although the Bank, unlike many others this year, offers an incentive of a tempting Clock radio and phone card interest for an account in credit is at only 0.50% compared to 4.25% with the Halifax or 4% with the T.S.B. or the Bank of Scotland. There is no interest free loan and interest

charged on an unauthorised overdraft is 20.74% A.P.R.

One of the best deals seems to be from T.S.B. There are cinema tickets and discount voucher incentives for the opening of accounts, free banking and 4% interest on an account in credit. In addition there is a £400 interest free loan allowance and the interest on unauthorised overdraft is 29.8% APR, (not the lowest on offer which

seems to be Barclays 13.6% but not the highest either which seems to be Abbey National's 34.4%.)

One of the best deals seems to be from T.S.B. There are cinema tickets and discount voucher incentives for the opening of accounts, free banking and 4% interest on an account in credit.

No doubt students will want

to make their own comparisons and will want to opt for the particular advantages that suit them best rather than just considering the overall package. There is of course always the tactic of opening more than one account and using each for a different service which is a legitimate use of scarce resources even if it is frowned upon by the Banks who would rather their customers made exclusive use of their services. This all brings us

back to where we started with scarce resources and so much to be accomplished with them. Spending the time to get finance right from the start seems worth while however since, apparently, most people change their banks less frequently than they change their partners. So if Banking is a marriage of convenience then its probably worth making it as convenient as possible.

BANK	INCENTIVE ON OPENING	INTEREST PAID IN CREDIT	FREE LOAN	INTEREST ON ON OVERDRAFT
Abbey National	None	0.50%	None	34.4%
Bank of Scotland	None	4%	£400	26.8%
Barclays	£10 Record Voucher	1%	£400	13.6%
Halifax	None	4.25%	£300	28.9%
Lloyds	£16 Railcard	1%	£400	26.8%
Midland	£15-£25	3%	£400	31.8%
Nat West	£25	2%	£400-£500	33.8%
Northern Bank	Phone Card Clock Radio	0.5%	None	20.74%
Royal Bank Of Scotland	£10	0.25%	£400 (1 year)	---
T.S.B	Cinema Tickets Voucher	4%	£400	29.8%

ALL BANKS QUOTED OFFER FREE BANKING ALTHOUGH SOME WILL MAKE TRANSACTION CHRGES ON UNAUTHORISED OVERDRAFTS AS WELL AS INTEREST CHARGES.

ALL OFFER MULTI-FUNCTION CARDS.

SOME OFFER A TRAVEL SERVICE OF COMMISSION FREE TRAVELLERS CHEQUES AND CURRENCY, FREE INSURANCE PACKAGES AND FINANCIAL ADVICE.

Barclays student exclusive



If you're planning to go to college this year, check our Barclays student exclusive offer. (There's no need to wait until you get your Grant Cheque.) Why Barclays? You see, we value your independence as much as you do. So, you're not going to be rich for a few years? Don't worry. We'll take a chance if you will. Call into any branch and we'll tell you how you could have ...

**An Interest-Free overdraft up to £400,
at anytime during your course.***

A Free Barclays Connect Card to help you pay as you go.

A Free Student Barclaycard, so your credit's good.

**Free financial guidance from a Student Business Officer
(in a branch at or near your college). You can talk
to someone who will understand your problems.**

A free £10 Our Price Music voucher. Sound OK?

And we pay you interest when your account's in credit.

Or, if you prefer, simply phone the Barclays Information Line free on 0800 400 100 or post the coupon below for details of your Barclays student exclusive offer. Barclays for this term, next term and the long term.

Post to: Barclays Student Exclusive, Freepost, (BS 4335), Bristol BS1 3YX. Please send me details of Barclays student exclusive, without any obligation.

The college I plan to attend this year is _____

Name (please write clearly) _____

Home Address _____

Postcode _____
(REG/93)

Call into: Barclays Bank PLC, 35 Kingsway, London WC2B 6TX

*(Equivalent Annual Rate 0%). Please bear in mind that overdrafts are repayable on demand.
You have to be 18 or over to apply for an overdraft and a Student Barclaycard (20 in Jersey). Subject to status.
A written quotation is available from the address shown above.

Barclays student offer is available to students entering full-time education in Great Britain in 1993 on a degree course or a course such as BTEC higher award or HND. Barclays Bank PLC. Registered in London, England. Reg. No. 1026167. Reg. Office: 54 Lombard Street, London EC3P 3AH.



BARCLAYS

Advisor to Women Students

Rose Rachman, Room A271 (Ext 7351) offers a "walk-in" service in her office twice a week to any women student who wishes to discuss any issue causing her concern. All information is confidential.

New situations create anxieties. Students coming to a large University in a strange city can find they are experiencing many difficulties, about which they would like to consult someone. The Advisor will offer advice and support for a wide range of problems and encourage students to seek appropriate guidance from other sources. No action is taken unless requested by the student.

**HOURS: TUESDAY 10.30 - 11.30
FRIDAY 10.30 - 11.30**

**SECRETARY: MARTINA LANGER
(Extn 7562)**

PERSONAL SAFETY AND SECURITY FORUM FOR WOMEN STUDENTS/STAFF

**WEDNESDAY 3RD NOVEMBER 12-2 PM
GRAHAM WALLACE ROOM**

Personal safety and security, both within the school and in returning to residence, is a matter of some concern to women students and staff.

This forum provides the opportunity to discuss the issue. Specialist women speakers from the Holborn police will advise on what measures you can take to improve your safety.

**Rose Rachman
Advisor to Women Students.**

**Fed up with politicians?
Are they getting beyond the limits of
your tolerance?
Isn't it time we gave them the old heave-ho?**
A practical guide, £7.99 (includes p&p),
payable to PAUL GREENWOOD.
Snakebite (Bvr), 67 London Road, Tunbridge
Wells, Kent, TN1 1DT.

Every Man and Woman at the Bar

Ultramarine turn Green at the Garage

Anyone who has kept a reasonable eye on the popular music press over the summer months will surely not need telling that Ultramarine are one of the most hotly-tipped "dance" acts of the moment - so it was with great excitement that I found myself sitting in the Cock Tavern at Highbury Corner with a complimentary ticket to the evening's entertainment across the road: the launch of the NME/Greenpeace "In a field of their own: volume two" Glastonbury album, a live set by one of the festival's successes, Ultramarine, and as much free Oranjeboom as I could drink. Oh dear.

An assortment of musos and celebs were supposedly present - but those nice people at Oranjeboom had ensured that I'd be highly unlikely to recognise them! Names being bandied about included the Wonderstuff, Lush, Teenage Fanclub and Suede - most of whom were, no doubt, as pissed as everyone else.

The album was piped incessantly

across the sound system for the majority of the evening, pausing only for the highlight of the party - a 40-odd minute set by Ultramarine, the primary reason for my attendance.



A respite from knob-twiddling duties, and it's bass guitar time. Photo: Rob Hick.

Ultramarine emerged onto the music scene a couple of years ago with their acclaimed Rough Trade album "Every Man and Woman is a Star", and an accompanying 45, the "Nightfall in Sweetleaf" EP. Rave reviews ensued, and Ultramarine became one of the trendiest names to "drop" into any conversation about ambient/trance dance music.

The album was said to have a very "American" feel to it - inspiration for the title and music coming from a night spent in Sweetleaf, Arkansas. All very distant from the band's smalltime beginnings in

and around the Essex/Suffolk coast, where they had been releasing sporadic recordings under previous guises, before Ultramarine was born.

"Every Man and Woman..." featured a variety of influences in a musical sense, from reggae and funk to Echo and the Bunnymen samples. The resultant casserole became a pot smoker's dream - seventy minutes of good melody, upfront dance and relaxing water noises, occasional vocals and vocal samples rolled into one.

With the collapse, to an extent, of Rough Trade, Ultramarine's efforts became hard to find until the general euphoria which would greet their single "Kingdom" and ensuing album "United Kingdoms", released through blanco

y negro to an expectant audience. "Kingdom" received Single of the Week acclaim here, there and everywhere, and the album is likely to feature in many end-of-year "best" lists in the music press.

Whereas "Every Man and Woman..." had an American influence, "United Kingdoms" has a distinctive English tinge. Robert Wyatt, an ageing folkie of Soft Machine fame, was recruited to warble a couple of Victorian tunes, "Kingdom" and "Happy Land" for the album, and has been credited with being a major creative influence on the album in general.

Strings and flutes abound, and the possibly disastrous fusion of folk and 90s dance works surprisingly well.

Back to the evening in question, and



Ultramarine fiddling with their knobs again.

Photo: Rob Hick.

an air of nerve-tingling expectancy, verging on impatience, engulfed the night's audience. Through no fault of their own, Ultramarine - like contemporaries the Orb, Aphex Twin *et al* - obviously have difficulty in the stage presence game: fiddling with samplers and other electronic equipment can hardly be made to look exciting! But a back-up band featuring drums, bass, guitar and flute

helped to carry the show.

The music was excellent - despite having no Wyatt on the night, "Kingdom" worked exceptionally well, but the majority of the songs were lifted from "Every Man and Woman...". Faves "Weird Gear" and "Pansy" were superb, and the most intense cut of the album, "Lights in my Brain", was beefed-up to a huge crescendo and the highlight of the set. Ultramarine came, saw, and conquered, and before we knew it, had left.

A fairly sparse review, I guess, but Ultramarine are difficult to describe - especially with bottles of Oranjeboom consumed well into double figures! The only way to experience Ultramarine is to see or listen to them yourself - roll a big fat spliff (or two) and drift into a world of wonderful, deep, dark blue.



Scruffy vagrant-type character manhandles LSE alumnus, the bass player from Suede. Photo: Rob Hick.

It's Competition Time!!

It's the biggest event in the music calendar - the Glastonbury Festival!!

And your super soaraway Beaver can give you the chance to hear the best acts recorded live from the NME stage, as we have a copy of "In a field of their own: volume two" to give away to the sender of the first correct entry to our simple question.

The album is 80 minutes long, featuring tracks by **Suede, The Auteurs, Dodgy, Eat, Adorable, Belly, The God Machine, Mega City Four, Lemonheads, Superchunk, Teenage Fanclub, The Orb, Stereo MC's, Ultramarine, Verve and Spiritualized.**

Highlights include, we reckon, an epic eight-minute "Everything Flows" by Teenage Fanclub and an even longer "Gravity Grave" by Verve, so if you couldn't afford to make it to Glastonbury this year, you can still enjoy the experience in the comfort of your own living room - or if you were at Glastonbury and too drug-addled to even find the NME stage, you can hear some of the bands which you missed.

The album is only available through the NME, priced £11.99 for the CD or £7.99 for the cassette. Of this price, £3 of all CD orders and £2 for every tape goes to Greenpeace. And as we would not wish to rip off such a worthy cause, with your answers we would like you to send a cheque/postal order for at least fifty pence, made payable to "Greenpeace", which we will forward.

Not bad, eh! After all, what's 50p at this stage of term?

Deliver your answers (only on the entry form on the bottom of the next page) and dosh to:

I'm not a tight-arsed git, I'm game for a gamble, and anyway, what does fifty pence buy these days Glastonbury Competition,
The Beaver,
E197.

Alternatively, you could simply hand it over at "The Beaver" stall at Freshers' Fair.

Dove is in the air

One Dove's debut album, "Morning Dove White".

What is it with Scotland? Is it really that boring a place? Why is it that our friends north of the border seem to be so bloody good at producing acclaimed techno classics?

Look at history - The Orb, Primal Scream and the Shamen (before they went crap and radio-friendly) have all served up superb albums over the past few years, and One Dove, with "Morning Dove White", are staking their claim to join these exalted idols.

However, One Dove's position is far from enviable. Who, after all, is going to want to release an album, let alone a debut, that has been billed as "Screamadelica 2" by assorted critics, prior to hearing it? Comparisons with this masterpiece are hardly fair - so it would be best not to draw any.

Perhaps not what One Dove had in mind, though. The names from Screamadelica are almost present here to a man - Andy Weatherall, Hugo Nicholson, Jah Wobble - but any expectation that "Morning Dove White" was simply going to be a re-hash of the 1992 Mercury Prize winner is wide of the mark.

One Dove - Ian Carmichael, Dorothy Allison and Jim McKinven (ex-Altered Images) - first surfaced in 1991, helping to make Glasgow's Soma Records the name they have

today. Major labels beckoned - and London, through Boy's Own, brought them south.

"Morning Dove White" has been in the pipeline since this time last year, when it had been given the working title of "Sound". Then, as is usual these days, it "did the rounds" of remixers, finally emerging as "Morning Dove White" to a hungry audience of cognoscenti and punter alike.

All three earlier singles are here in one form or another - "Fallen", their Soma debut (subsequently re-released through Boy's Own in early '92) and standard, mixed by Hugo Nicholson, features "Twin Peaks" samples at the start, followed by crunching bass, ethereal vocals and dub echoes, which creates a powerful, spacey offering that is hard to beat.

"Fallen" opens the album, and is followed by their most recent output, "White Love" (June '93) appearing in its "Guitar Paradise" guise. A couple of minutes of screeching wild guitar is punctuated late on by a shuffling beat, more ethereal vocals, piano riffs and melody. "White Love" trundles along merrily, and leads into "Breakdown" ("Cellophane Boat Mix"), the next single to be released. After a storming opening, "Breakdown" is a little bit of a let-down,

perhaps - too consumer-friendly possibly, a tad sedate, and a bit of a non-song.

The rot is stopped somewhat by "There Goes The Cure", as Jah Wobble's dub-bass antics are cut loose. In many minds, Wobble has achieved demi-god status, and now is the chance to hear why - as he drives the tune along, in much the same way as he did for "Higher Than The Sun - a dub symphony in two parts" on Screamadelica. The song is halfway through when Wobble gets the chance to flaunt his wares, to good effect.

"Sirens" follows, Hammond organ and castanets in tow - and showcases One Dove at their dreamy, lazy best. More of Dot's breathy vocals are heard, and "Sirens" ends up with a peculiar, laid-back "Arcadian" sound. "My Friend", the most eagerly awaited track on the album - as Andy Weatherall has free rein - is next up, and the anticipation is rewarded. A colossal tower of noise, unbelievable sub-bass and, of course, Weatherall's unchallenged Midas touch bring "My Friend" to life.

Second single, "Transient Truth" ensue, again remorselessly dub-heavy, characterised by more whispered vocals - to say that One Dove's sound is sexy is something of an

understatement! The album is then, to all intents and purposes, rounded off by "Why Don't You Take Me" - slightly gospel-tinged, perhaps, and all too short.

There has to be a down-side to this tremendous album - which occurs after "Why Don't You Take Me" - two more versions of "White Love" (a "Piano Reprise" and a "Radio Mix"), and a "Radio Mix" of "Breakdown". Thoroughly needless - and a cop-out from the groove that the album has happily travelled previously. Both radio mixes, courtesy Stephen Hague, are definitely surplus to requirements - the legacy of London Records' feeling that One Dove might achieve more success with Hague than Weatherall. An idea which is definitely ill-advised: although One Dove might achieve more financial success, the very essence of their music is lost in trying to transform them into some sort of sub-Saint Etienne chart combo.

It's a pity that this has to happen - there seems no doubt that if the Boy's Own/Sabres of Paradise team had really been given a licence to please, "Screamadelica" might have had to be referred to as a "prequel" to "Morning Dove White" - sadly this is not the case, but it is still a bloody good record.

Rusty Bullet Hole

Well, well, well - what's all this? An opinion column on the music pages! Why?

'Tis easy, really. Here at Beaver Central we just felt that it was necessary to keep you informed of all the news, views and general bitchiness in the music world as it happens. Furthermore, it fills up space when we've got sod all to put in, as was the case week-in week-out last year.

So, what's happened while you've been away? As you can see from the feature this week, RBH was hobnobbing with the celebs at the Garage for the launch of the NME/Greenpeace Glastonbury Album. Much the worse for free Oranjeboom, RBH met the bassist from Suede. The words "Rock 'n' Roll" didn't exactly spring to mind.

RBH, out of curiosity, was among the many folk who watched the "Opening Shot" documentary on the aforementioned band, and was sickened. The supposed saviours of British Popular Music didn't exactly excel themselves, did they? Where were the drugs, the empty bottles of Jack Daniels, the scantily-clad groupies? "Rock 'n' Chair", more like. Old biddies.

When RBH first saw Suede, nearly 18 months ago now, they were crap live and they've not improved much, from what was on offer on "Opening Shot". What is even more galling is the fact that they won the Mercury Music Prize, and the Stereo MCs did not. There is no doubt that the four singles released from the album are as impressive a debut as you could hope for - even though the piano break on "So Young" sounds like Bruce Hornsby. But the rest of the album, it has to be said, is at best pretty poor. And RBH, in contradiction to some of the fawning, kowtowing commentators on "Opening Shot", has to say that the lyrics aren't exactly "inspirational".

Comparisons with the Smiths have obviously been made - Suede have the makings of a fan-base as devotional as those who would have us believe that their very existence depends on what colour bog roll Morrissey wipes his arse with. But these people who still write to the NME six years after the bloody band split are, let's face it, fairly low on the food chain.

In fairness, it is their first album so judgements shouldn't be made - but others have already pronounced them deities in the music world, and RBH is just offering some cautionary advice. Suede have scored maximum points in the publicity game - let's hope that the sane amongst you are not suckers for it.

ENTRY FORM

We want you to match the following bands, which appear on "In a field of their own: volume two" with their respective albums:

- 1) Suede
- 2) The Orb
- 3) Lemonheads

- a) U. F. Orb
- b) Come on feel the Lemonheads
- c) Suede

Answers 1)..... Name

2)..... Address

3).....

I enclose a cheque/postal order for at least fifty pence.

Manchester Fail

Again

That Gladys Althorpe, she never wins the Olympics

Oh dear, Manchester didn't get the Olympics. Shame, that. A fortnight in the pouring rain instead of sunnier climbs like Sydney or even Peking. Yep, I would have voted for them. Granadaland. The television coverage would've been excellent. It probably would have been on Sky. As for the stadia and sporting complexes that were in the pipeline...what a waste. Still, if only Manchester had come up with Sylvania Waters instead of Coronation Street, then the International Olympic Committee would've taken little persuasion to vote for Berlin.

Look on the bright side, at least we won't have to watch the 100 metres sprint challenge a la Peking, with tanks chasing the athletes. At least we won't have to listen to Tony Wilson any more and at least we can all get a sun tan in Sydney....

Sporting prowess probably had a lot to do with why the IOC chose to avoid the North like the plague. The reason why



The Manchester Olympic Committee take the news badly... Photo: Caroline Barnes

Manchester hadn't won the League title for so long had nothing to do with the fact they were shite but more to do with the fact it rains so much, probably.

Still, there's nothing any of us can do now. The choice has been made. Sydney 2000 is seven years away. But what of Manchester? Will it bid again for the Olympics in the year 2004? I hope so, after all, no other British city looks capable of hosting such an event. It's chances of getting the nod even then looks remote. Judging by the way

former 'developing' countries are advancing, the 2004 Olympics are likely to go to an African or Middle East nation, unless FIFA decides to award the 2002 World Cup to an African nation. Or the United States. Besides, Britain has had its fair share of sporting events over the past years. The Olympics twice, the World Cup once, the European championships in 1996, the World Student Games, Rugby Union's World Cup, the Cricket World Cup. The list is endless. Do we deserve

or really need to host another Olympics?

True, the Olympics are a prestige event and Manchester's bid was a worthwhile challenger, but it still lacked that certain something needed to win the Games. Until we work out what that something is and sell it to the IOC, I'm afraid the Olympics won't be coming to these shores until well into the next century.

Neil Andrews

Turn on tune in drop off

Boredom is a wonderful thing. It makes you do strange, pointless things, like watching cable TV in a white room in Copenhagen while the most beautiful woman you have ever known trails round the local library equally bored and confused. Ah! Anyway, whilst switching channels I came across the Eurosport Channel, Private TV's poorer relation of the banal Sky Sports. This sparked a memory of sitting in the Rosebery TV Room with a very inebriated Dave Whetham late one night trying to find something to watch. On that occasion I passed it by before passing out but this time I thought I'd give it a try.

It started well enough - highlights of Norwich vs Vitesse Arnhem's UEFA Cup match - but it didn't last. As the final whistle blew, the image of 22 men chasing a ball melted away and in its place came the oddest spectator sport I have ever seen;

extended coverage of the Extran Cup. What, you may ask, is the Extran Cup? To be honest, I don't know, but it appeared to be a major Ten Pin Bowling Tournament. Surely the Children's Channel had something better to offer? Nope, Mr Benn had finished.

So, I persevered. I watched. I learned. I tried hard to stay awake. No disrespect to any Ten-Pin Bowlers out there, but let's be honest, it's hardly a spectator sport in the vein of say Ice Hockey, Soccer or American Football. Especially when the commentator seemed as disinterested as I was. But I gave it a chance and watched George Patel play Philip Meinke for the right to meet the "world's Number One" Achim Grabowski - a skinny bloke with a silly moustache - in the final. Meinke won, but not before the viewer had learned that Patel liked to play golf in his spare time, a pastime favoured

by many of the World's top players....

How Eurosport hoped to make this programme watchable was beyond my comprehension. There were shots of the crowd - yep, the crowd that applauded on command and waved when told to, Streatham has nothing on this - and shots of both camps. Believe it or not, both bowlers had 'seconds' who psyched them up and applied ice packs on their hands to reduce swelling (oo-er). All this to the accompaniment of a commentator whose favourite phrase seemed to be "the adrenaline of both players is now flowing to full effect" (?).

Anyway, Meinke met Grabowski in an all German final. It climaxed when Grabowski needed three strikes out of three attempts to tie the contest and go into a play off. Alas, he only got two, leaving one pin standing on his last attempt. Meinke won 214-213.

Cue credits and closing statements.

Apparently, the Dutch are the best in the World at Ten-Pin Bowling. This tournament turned out to be part of a Bowling Grand Prix, with this being Round Seven, known as the Dutch Bowling Masters, and the programme was financed by the Dutch Bowling Federation. Judging by the standings of the respective players, the Netherlands have this game wrapped up with a commanding lead over everyone else. The success of this game in The Hook must have something to do with all the drugs they take. It's the only way you'll be able to find this spectator sport watchable. Unless you're a no-mark.

My sanity was rescued by the appearance of an episode of 'Dynasty' on TV3. Yep things were that bad, if only she loved me.....

The Lion Roars

CLUB NOISE

No.1 Wycombe Wanderers

As the football season rolls into motion, I felt moved to write a tribute to my own local club; Wycombe Wanderers, once giants of the GM Vauxhall Conference and now bookies' favourites to win the 3rd Division title (at least they were at the beginning of the season)

But what's so special about Wycombe Wanderers, I hear you cry? Despite the fact that only one team gains promotion to the Football League each season, few have received so much media attention (I don't remember Colchester United being in the papers and on the television to the same extent last year). The media, who are prone to hype, seem to believe that Wycombe has got something special.

To begin with, they ditched their 'infamous' sloping pitch in the centre of town, and moved further afield to a luscious brand new purpose built stadium. Then they snapped up former Northern Ireland International and managerial novice Martin O'Neill to lead the players. Finally, they acquired stacks of cash....

This admirable 'set-up' was frequently commented upon by the media whilst Wycombe were still fighting for the GM Vauxhall Conference title. Cynics may point out that how ever wonderful the clubs banqueting facilities are, they're still only in the Third Division - a long way from the Manchester Uniteds, Arsenals and Millwalls(!) of this world. But whilst others argued about the merit of their respective teams and their position in the league, Wycombe supporters were proud of their side. It is not so much about where they are, but more to do with the interest the team has generated in the town.

Locals were suddenly drawn together with a common interest. This 'bonding' of the town was a new phenomena, for me at least (but then it takes little to amaze me). Even my Mother who often comments on the futility of twenty two men running up and down a pitch chasing a ball, came to see the Wanderers at Wembley in the FA Trophy Final, and, moreover, enjoyed herself.

In fact WW fever has gripped other members of my family; disappointed with the poor choice of Tina Turner's 'Simply The Best' at half time, my little brother wrote to the management offering his services as match day music supervisor (Consisting of basically Thousand Yard Stare and nothing else - NA). They have yet to reply.

Of course, at the end of the day, it's the team's performance that matters, rather than what my brother wants to hear over the tannoy at half time. Although their first match against the mighty Carlisle ended as a draw, Wycombe came out of it well (more media praise etc) and in their next match they crushed the even mightier Leyton Orient 3-0 in the Coca Cola Cup.

It is possible that by now they may have "crashed and burned" (They have, they lost 5-2 to Colchester United - NA), but I'm not hear to find out. As I sample Student life the Scandinavian way in sunny Copenhagen, I will listen out for news of my favourite team and if they're doing really badly I can always turn to Danish soccer....

Caroline Barnes

Houghton Street Harry

Politicians and terrorists all over the World have a history of using sporting events for their own benefit. Hitler used the 1936 Olympics as a propaganda exercise. In 1972, 11 Israeli athletes were gunned down by extremists in Munich. China are forgetting their past and hoping to stage the 2000 Summer Olympics. Now there is a nasty cloud on the horizon which could bring about the return of football hooliganism to the terraces of Britain. The catalyst for this, I fear, will be the election of a BNP Councillor in Tower Hamlets. Why? Think about it....

In 1885 a football team was founded on the Isle of Dogs by local factory workers. In 1993 that very same team are still in existence, playing in the First Division of the Football League. They're no longer situated on the Island but they still carry the name they were christened with all those years ago; Millwall Football Club are on the brink of returning to the dark old days of the '70s. Following the election of Derek Beackon, the racist element returned to the club that was haunted by the National Front during their heyday.

When John Fashanu helped launch the PFA's scheme designed to kick racism out of football, he singled out Millwall as one of the few clubs that had taken a lead to eradicate one of the least tasteful elements of the English game. For the past decade, the club had worked within the community to improve its image and was making progress. But now, those with small minds seem to think that Millwall is a place where they can air their views without fear of recrimination and, if they're really lucky, they can round off the day with a punch up.

Following an episode of 'Panorama' in 1978, which highlighted the "supposed" hooligan element of one of the country's most notorious clubs, everyone wanted to play Millwall, purely for the chance of a punch-up. Furthermore, the National Front believed the Den was ideal for recruiting members. The end result of all this was a clash between rival fans during the 1978 FA Cup Quarter Final between Millwall and Ipswich Town. The subsequent impact on the club was immeasurable and they became a nondescript Third Division side, lost in a wilderness of near-bankruptcy and lousy players. This appeared to be well in the club's past but now it's threatening to return.

Millwall look set to become one of the many victims of the BNP's "victory". Fascists and racists around Europe will link the club to the ward and use it for its own purposes. I don't want this to happen to a club I have supported for nearly 22 years. Millwall is not a racist club - on the contrary, a quick look at the cosmopolitan team sheet will confirm this - and it wants nothing to do with the BNP. But the old stereotypes still exist. People still associate Millwall with right wing extremists and "patriotic" hooligans. Last week's election will only re-endorse that belief. Do not, like those with fewer brain cells than feet, associate the club with those who voted for scum like this in the recent election. The two are completely separate. Racism has no place in football, a belief that Millwall FC have taken to heart over the past decade.

It's very likely that the BNP will be canvassing outside many Football grounds in London this season. Don't ignore them. Letters and petitions to these respective clubs works wonders in eradicating them from the area.

Are You Bobby Charlton?

Settle any lingering doubt you may have with this simple questionnaire

1. What is your nationality?

- a. English
- b. Iraqi Jesuit
- c. Too early to be sure
- d. Who put the 'ram' in "ram-a-dam-a-ding-dong"?

2. For which club did you win a European Cup Winners medal?

- a. Manchester United
- b. Accrington Stanley
- c. In a tree house, I forget where!
- d. Three times a day mostly in sporadic bouts of sneezing

3. If somebody makes a joke about Bobby Moore, do you;

- a. Give them a reproachful glance and inform them about the former England Captain's greatness
- b. Put on an embarrassing laugh and change the subject
- c. Congratulate them on being 6 months out of date
- d. The combine harvester is approaching with frightening speed

4. What is the first thing you do when your aeroplane arrives at the airport?

- a. Kiss the tarmac gratefully
- b. Pretend I'm not bothered about having gone 2,000 miles out of my way on the wrong plane
- c. Empty the sick bag discreetly

d. I was refused bail because of my Mexican ancestry

5. Do you believe the Pope possesses the keys to the kingdom of heaven?

- a. Yes
- b. No, but my next door neighbour has entrusted me with her keys while she goes on holiday so that I can water the plants
- c. The path to heaven lies via my boxer shorts
- d. Since my last encounter with Dr. Schneken my hair has started to fall out in large chunks

6. Have you ever scored a goal in the World Cup Semi-Finals?

- a. Yes - in 1966 against Portugal
- b. No. I don't like football
- c. I scored at a Carr Saunders party once and that's the equivalent
- d. Hamlet's mental instability is a positive reflection of man's inability to eat seaweed for long periods at a time.

7. How many caps you have won with England?

- a. 106
- b. None
- c. I use other forms of contraception
- d. All woodlice look the same to me

8. Do you think Ryan Giggs is the new George Best?

- a. The boy has great



BOBBY CHARLTON

talent but they're two different people

- b. Oooo, I love his new hairstyle
- c. He's just a spotty virgin
- d. Ever since I was a baby I have suffered from a pathological fear of nutmeg

9. Is your brother manager of the Republic of Ireland football team?

- a. Yes
- b. No
- c. With my acne?
- d. I once had a tremendous vision of a toucan on horseback

10. Are you famous for being a well known slap-head?

- a. My distinctive locks are renowned around the world
- b. No, I have a bubblegum perm, like Mr Keegan.
- c. I am a popular, well liked member of SU. ni

d. Butter is the Devil's spunk!

How did you score?

Mostly A's: Yep, you're Bobby alright. Get those drinks in son!

Mostly B's: Not only are you not Bobby Charlton but neither are any members of your family. Go away, please

Mostly C's: You are Martin Lewis

Mostly D's: Who are you and what have you done with my geraniums?

Mostly E's: Your grasp of questionnaires is hopeless.

Mostly F's: You're obviously an "ironic" pop star in the vein of U2. Do us all a favour and go get lost in a desert somewhere.

Strange But True

In 1982, Republic of Ireland striker Tony Cascarino was signed by Gillingham from non-league Crockenhill for a set of tracksuits and a sheet of corrugated iron.

In 1978 Colchester goalkeeper Graham Smith ran to his goal mouth and kicked both goal-posts as part of his pre-match routine. The crossbar then fell on his head.

That Damon Hill Interview in Full

Damon Hill
Hello, what's your name?

Kevin
Kevin, Mr Hill

Damon Hill
Smile, Kevin

Next week:
Jim Fagan meets Jack Charlton.

