

# BEAVER

FEBRUARY 13th 1964

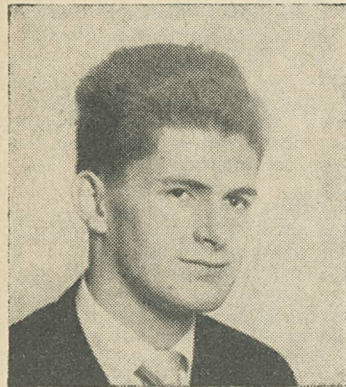
No. 38

3d.

BRITISH LIBRARY

14 FEB 64

OF POLITICAL AND ECONOMIC SCIENCES



● 'Ability, experience, results . . . actions not words'.  
**MAURICE ENGLISH**



● 'Improve, inspire, enthuse, reform'.  
**MIKE BROMWICH**



● 'Committed to a programme of change'.  
**NITIN DESAI**



● 'Reform within and without'.  
**SUDHEER DESAI**

# PRESIDENTIAL POLL DAY

## How to vote today

In the elections the preference system of voting will be used.

Each voter may, if he wishes, state his preference for any number of candidates in the order of his choice.

In the event of one candidate

not getting a 50% plus one majority, the votes will be redistributed until one candidate has the required majority, the candidate receiving the fewest votes at each count being eliminated until this stage is reached.

TODAY LSE goes to the polls to elect a president.

Last minute wrangles and withdrawals have left six candidates in the field.

Christophers Davison and Kemp decided not to stand, but Consoc member, Mike Smith, stayed in the running although his original intention — to oppose a Marxist — was outdated.

Eleventh-hour runner was Nitin Desai, SARD enthusiast and member of Labsoc. Mike Bromwich after his bitter denunciation of Union only a fortnight ago, resolved to join the fight.



● 'Less heckling, more decisive discussion'.  
**AZIZ KURTHA**

## Will this end?

UNION APATHY. The phrase was being hurled from side to side in the last issues of Beaver.

What is this phenomenon — and does it really exist?

To find out, Beaver inaugurated a small-scale survey of student opinion.

Students, hitherto unknown to the interviewers, were accosted and questioned. It is pleasant to be able to relate that 46 out of 50 knew the name of the President of the Students' Union.

But it is doubtless disconcerting

for Ken Hurley to learn that only 14 of the sample were aware that he was President of the Athletic Union.

All but two knew where the Union office was situated, but Bully Beardshaw's elevation to the position of Social VP has passed by unnoticed.

Union apathy does appear to exist. Right — so we didn't need a survey to tell us so, but the ignorance was even more shattering than we expected it to be.

After all, comfort can be perchance gained from the fact that 92 per cent did know who was the President of the Students' Union. Do you?

Ex-senior Treasurer, Mike Bromwich, maintained "Union is dying! The fault is not that of the members but of the structure. We need more control of academic affairs, the school's expansion plans and MORE MONEY."

"I believe", said Nitin Desai, "that the Union can be made to hum with activity. I envisage a dramatic expansion of Union's activities". And to you the voters . . . "Do buttonhole me if you want to know more."

## CANDIDATES QUOTES

From Sudheer Desai: "Three major problems face the Union — inadequate finances, lack of student representation, and apathy. I propose more money, stronger student representation in academic affairs, a renovated constitution and a larger freshers' reception."

Maurice English, who, in his own words, has "fought the Council for refectory, library and Union reform" contributed this jingle: "Ah, voters, if thou and I could conspire To grasp this sorry scheme of things entire, Then shatter it to bits, to remould Nearer to our hearts' desire"

Aziz Kurtha, last year's welfare V.P., commented "We need constitutional amendment to stimulate interest and cut heckling, fairer distribution of the budget, better catering facilities, a proper system of finding vacation work and accommodation for students, and closer liaison with the faculties and 1200 postgrad. and diploma students."



● 'Now a responsible Tory Union'.  
**MIKE SMITH**

SARD committee member, Mike Smith, promised "I will do all I can to discourage lodgings discrimination. I appeal for support to everyone who feels that the Union has been left-dominated too long. I suggest a dental unit, ladies' hairdresser and more Union humour."

## . . . But she's a winner!



IRENA PODLESKA of Polish origin, became Miss LSE at the WUS Week contest held on January 30th.

Eleven contestants paraded across the old theatre stage and were questioned by compères Geoff

Wansell and Bud Peterson.

Alma Cogan led the team of judges, which also included Kenny Lynch and President of the Students' Union, Trevor Fisk.

The old theatre has never been so packed. Library benches were deserted and students were jam-

med three deep in the doorways of the O.T.

Three freshers were selected as runners-up Joanna Page, Vicky Welch and Alison Archibold.

Alma Cogan treated the audience to a delightful little song on hipopotami. It was very well received.

THE LAST TWO POLLS WERE 20% REMEMBER TO VOTE!

Clothes for the up-and-coming

**Leonard Lyle LTD**

86 KINGSWAY W.C.2

Branches throughout London & Suburbs

- BLAZERS
- SLACKS
- TOPCOATS
- SCARVES
- TIES
- SHIRTS
- KNITWEAR



# editorial

WE are contemptuous of the authorities at Worcester College, Oxford, for their savage rustication of American Roger Hostin — found with a woman in his room.

We are contemptuous of the students at the University for their passive acceptance of this act.

For Hostin is paying his own fees from his savings. He has no relatives in this country and so, although the college authorities insist that he still pays nearly £100 for the rest of the term, he must also pay living expenses in London.

His whole academic career has been brutally interrupted, if not prematurely cut short.

And every student of his college insulted. For the way in which he was caught is degrading to all of them. A female "char" entered his room, searched it . . . and screamed when she found the girl in a cupboard.

It is intolerable that a college employee, should have unlimited access to student's rooms. It is intolerable that any student should not be able to lock his room when he is inside it.

And worst of all it is degrading that it should be necessary to hide a girl, even during the morning.

The Student's Council at Oxford have been shamed into condemning the decision to rusticate Hostin.

They complain "a scout was used to spy on Hostin", that there was no "system of consultation set up between Senior and Junior members", and that "no provision was made for Hostin's self defence and appeal".

They speak as if Hostin had done something wrong. And not as the victim of an archaic morality that he has become. And there is no talk either of action to help Hostin or of action to secure for the students of Oxford the mature treatment their age and position demand.

Until such action is taken we in London have a right to condemn them. And to sympathise with Hostin.

College rag organizer Chris Powell has said (see back page) that there is need for people to collect during LSE's stunts next week.

They must come forward. Unless these stunts result in financial success they can, rightly, be condemned as irresponsible. And much time wasted.

But if they result in sizable contributions to worthwhile causes — contributions that would not otherwise be made, then we need not concern ourselves with the criticisms of a tedious minority.

## president's column

*There's something about a varsity man  
That distinguishes him from a cad  
You can tell by his tie and blazer  
He's a varsity undergrad.  
We had a rag at Monico's . . . . .*

Betjeman's satire on student bon-homie serves as a timely reminder of the general public's conception of the student.

This year's University Rag Week is to be held from 21 to 28 February. All the usual features will be present — Rag Mag, Ally Pally Stomp, Car Comp, together with all the rags and stunts which aim at going one better than last year's "capture" of the Tower of London.

These events will provide ample opportunity for London students to paint the town red, and I hope LSE's participation will outdo all others.

But let us use the week to refute rather than confirm the public image of student mentality, by bearing in mind the serious side of Rag Week, the raising of funds for, inter alia, Dr Barnardo's, WUS, Cancer Research and Oxfam.

Last Beaver highlighted the need for reform of the Union. Council too is doing its share of thinking as to how the Union can be made more efficient and more lively, perhaps by a non-Council chairman with powers of 'guillotine', thwarting filibusters, etc.

Among the innovations under consideration are (a) revising Council to share out the load of work more equitably (b) reform of Union meetings to speed up business.

Reform can only go a little way to conquering student apathy. When issues of importance are discussed, such as the recent anti-Facist motion, the apathy wanes.

There is an urgent need for an all-out onslaught on the problems of bringing together the various national groups in the college. For all our opposition to apartheid and chauvinism whensoever it may manifest itself, such problems are not so remote from LSE itself.

How many British students form lasting friendships with their comrades from overseas and vice-versa? The response to the Union scheme to encourage English students to take foreign students home for Christmas a year ago shows that LSE is by no means the integrated body it superficially appears.

Council has created an Overseas Students Committee to look at these problems. But no committee will succeed unless the mass of students sincerely wish it to succeed.

It is all too easy to blame an organization such as School or Union for not doing that which requires not central administration but individual initiative and enthusiasm.

# MADLY MOD!

REMEMBER when you went to the West-end on Saturday nights? Remember those all-night North London parties which in retrospect put the Keeler affairs in the shade?

Remember sitting in Hampstead pubs and Chelsea coffee-bars where sooner or later you would, and did, meet a real-life 'junkie' or 'queer'?

And the clothes which symbolised people's cultural allegiances; those ubiquitous sloppy sweaters of dad's, given new lease of life; skirts made of fringed tartan bedspreads; and carefully paint-spattered jeans?

These are no more except among the nucleus of genuine artists and non-conformists whence they were originally copied. For the restless younger generation — students perhaps excepted — anyone can have Hampstead and Chelsea: the original set may well be glad to be rid of the intruders.

And the West End? It was always overcrowded with tourists, 'foreigners' and country cousins 'up for the cup', and the expense of its clubs and cinemas is beyond the average budget.


Why this revolution? Where have all the others gone?

The answer is decentralisation — of the commercial youth-cult. Just as in the whole of Britain, it is no longer beyond the pale to be from Manchester and Liverpool — in fact it is just the reverse in these former decaying backwaters of fashion.

Just as the provinces have become pop and differentiated, so in London you are no longer an outcast if you come from the suburbs.

The suburbanite student now has some consolation for two hours daily commuting; one no longer has to travel miles to a crummy London party because one can get cheaper and better entertainment nearer home.

Last year the number of jazz, rock and rhythm-and-blues clubs suddenly increased, originating, for the most part, in small local hotel jazz clubs, but with the beat-music boom many had to transfer from hotel assembly rooms to accommodate much larger crowds of devotees.

the   
*Carol Hornsey*  
column

Consequently, many of the best sessions take place in the oddest settings, viz. Epsom Swimming Baths and Richmond Athletic Ground.

And the audiences? Old fashioned Teds have virtually disappeared in London's suburbs. The former beats have grown up, or have smartened up; shamed into it by the 'mods', the rising generation of sharp-dressing, professedly clean-living young

people who have taken over the suburban and to some extent the provincial beat-clubs.

As the spending power of affluent British youth increasingly influences consumer tastes, naturally the smooth, 'mod' look has had its effect on fashions in clothes. The trend is far from on the wane.

Yet at the same time the 'mod' unconsciously reflects a trend in men's and women's fashions to a subtler, more elegant and less blatant attractiveness. This poses the question in passing, whether the designers have been influenced or have been the influence themselves.

Smart 'mod' girls wear straight, droopy 1930-style dresses, with skirts reaching below their knees or ankle-length; low Cuban-heeled shoes, plain, unpatterned nylons; and short, bobbed hair often tied back peasant-style with a headscarf.

With a few modifications, but at greater cost, this is also high fashion; the full-length skirt is in for evenings and parties, while some avant-garde Paris couturiers, RICCI and CARDIN, have shown the lower hemline within the last year.

Admittedly, men have become so used to seeing girls' legs displayed that there may be an outcry when the longer skirt catches on.

But, fashionwise, the tarty, come-hither 'femme-fatale' has had her day, as has the gaudy metropolis for young suburban pleasure-seekers.

## I know a bank . . .

Actually, as Shakespeare fans will recall, the bank that Oberon was talking about was the sort whereon the wild thyme blew. Just the thing for a midsummer night's dream no doubt but not nearly as much practical use to the student as the other kind of bank — the Midland, for example. There's nothing difficult about opening an account with the Midland; just a few simple formalities and the thing's done. Have a word with your local manager — he'll be very willing to help. And you don't have to go to Athens for this bank either. There's a branch of the Midland in every university city and town.



# MIDLAND BANK

HEAD OFFICE: POULTRY, LONDON, EC2

## LETTERS

Dear Sir,

May I say how much I welcome the proposal to provide a scholarship for a student from South Africa. I hope that this venture will get all the support it needs.

It is important that a student who is adopted in this way shall not be made to feel "different" through an excess of overt sympathy. We must accept our protégé as a human being and not as a living demonstration against apartheid. Direct help to an individual condemns the evil things more strongly than any amount of theory. Personal compassion is the best demonstration of all.

Yours faithfully,  
Raymond Chapman

Dear Sir,

Isn't it about time some attention was drawn to the type of service that is provided by the Economist Bookshop? Considering the ties the shop has with the School there is a growing feeling of resentment among many students at the unhelpful and sometimes arrogant attitude of some of their staff.

This was certainly brought home to me recently when on tendering a guinea book token for a 10/6d. book, I was told in a very condescending manner that the shop would accept the token for the book but I would forfeit the whole of the difference in value.

If this is service and co-operation, I'll stick to the friendlier atmosphere of W. H. Smith.

Yours,  
Barry Sheeman



# Adventures in Liberia

“WELL gentlemen, would 500 dollars be of any use to you?” President Tubman leant back and rasped his throat clear of his thick cigar smoke.

This was the conclusion of our interview in which we had explained that we were setting out to carry out a research programme in the interior but that although we had raised sufficient funds to reach Liberia we hardly had enough to get back!

“Graduates in economics”, he commented, “are bad bad budget-ers!”

Friendship with Winston and Robert Tubman (at LSE and Passfield), lack of statistical information in the library and the unusualness of Liberia made us determined to go there. With a fast expanding economy and many British companies investing there, we hoped to be able to raise the necessary cash.

## Broadcast

Union support, plus Beaver and Sennet publicity and a £200 travel grant from the Ford Daganham Trust gave us a good start on the road that was to lead us to raising nearly £2,000. An old LSE Athletic Union president—Ralph Rovette—now a business consultant, helped us in finding business contacts and was a major contributor and source of encouragement to the project. Each expedition member contributed £100.

As well as newspaper publicity we made a half-hour broadcast explaining our proposed studies and headed off into the interior.

Four thousand people, with the aid of Liberian interpreters, were covered in our survey. Three main groups — villages near a road, villages in the bush and a local township were selected.

In another village, we found a girl who had been dowried at the age of six and after “freeing” her from her husband we sent her to Monrovia to go to School.

Living in primitive conditions we faced the dangers of snakes all the time. A boy was killed in a hut only a few yards from the one in which we were sleeping. The missionary in the district has had over 70 deadly snakes killed in the last year by the lawn mower on the grass around the mission — the mower was pushed by bare footed boys.

We also visited the vast iron ore mining project at Nimba and made what is probably the first movie film of this fantastic enterprise to be sent to this country.

A long drive down an allegedly impassable road and a seven mile canoe journey in the Cavalla river took us to “Andy” Anderson’s (now an LSE first year student) home at Cape Palmers. And afterwards . . . the problem of how to get back.

## ‘Sand driving’

“First dig, then use the sand boards. Now four wheel drive, bottom gear, high revs — and travel brother!” Thus ran our sand driving lesson on the beach at Accra. After a full service of the Austin

- elephant hunters
- killer snakes
- impassable jungle tracks

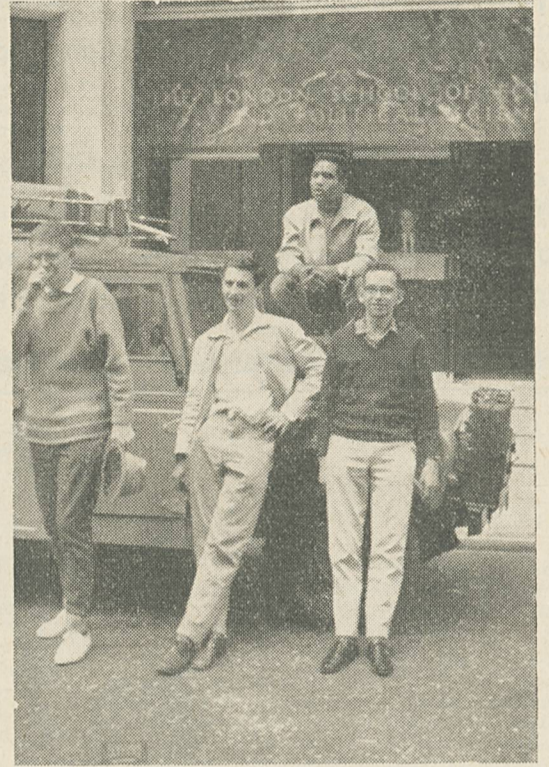
notorious pick-pockets.

With many hold ups we eventually reached Algeria at the end of November, our mascot, a beautiful little dog, bought in a Liberian village, now is a sophisticated “Parisienne”. We reached a cold and drab London on December 2.

Jim Sainsbury



July 5th, the start of the Trek



Results have to wait until our statistics have been tabulated and computerised — which will take time. The “official” population figure for Liberia is two-and-a-half million. But the census of 1961 counted far fewer than this. In our area our results indicate under-estimation by the census — which should please the Liberians! Our final report should prove to be a worthwhile and detailed analysis of life in the interior compared with similar studies in the “colonial” parts of Africa.

## Jungle guns

At one village — 70 miles “into the jungle” (no other white visitor since 1905 — a missionary) we found the “elephant hunters” of Darlia. They own 12 bore shot guns. After removing the shot from the cartridges and replacing it with straw they put a rod — about two feet long — which has a metal tip in the barrel. It is then fired from the hip and emerges like a spear! Surprisingly, it is effective!

- Expedition Jeep in remote Jungle village

Gypsy we headed north to Ougri-liengon and to Niary in Niger.

After Accra there was no further chance of spares or adequate service until we reached Algiers — 3,000 miles away over really rough conditions.

By Aqades our fuel pump was useless — so we used gravity feed from a tank in the roof. The vital half way post — in Guizzam is now just deserted — so that enormous reserves of petrol had to be carried. The desert is beautiful but eight people have died on the crossing in the last year and we had to wait two weeks before we found anyone else crossing to go with. There is no longer any insurance—rescue system, the route markers and bad patches are no longer maintained.

Algeria craves for vehicle spare parts and the children are now

## “...always breaking dishes or falling over things”

Paul Pepper by Paul Pepper

**Line of work.** Production. I manage the processing of certain raw materials into a product that you will find in half the kitchens in Great Britain. No, it's not like pulling rabbits out of a hat—it's quite an involved chemical and engineering process.

**But what would you really rather do?** What I'm doing. I like my work. The chemical changes fascinate me. It's always interesting.

**Driving force.** A pre-occupation with metamorphosis, if I can put it that way. I don't mean turning a man into a beetle, like Kafka. But nevertheless, to change things. To take raw materials and turn them into something different, something people need. Look at it this way. On the left you have things in drums. In the middle various things happen. On the right you have a product that millions of people can use every day. If you think about it, that's quite an amazing thing.

**Most paradoxical quality.** I'm hopeless at work around the house. Always breaking dishes or falling over things. Luckily, I've got a wonderfully patient wife.

**Personal panacea.** Read a book—a ghost story preferably. That usually seems to take my mind off things.

**The terrible temptations.** Making pizza . . . my wife's kitchen is always a shambles afterwards.

**Greatest satisfaction.** Joining the Unilever Companies' Management Development Scheme. One of the advantages of this scheme is that it gives you an insight into the different aspects of industry—management, industrial, technical, production, marketing—without committing yourself. For instance, I was interested in chemistry, but I didn't know how I would apply this in industry. During my training I discovered that production management was the answer. Also it enabled me to be involved with people, which I like. My job is diverse and offers a challenge. I enjoy it. That's my greatest satisfaction.

If you are choosing a career in industry you should consider the Unilever Companies' Management Development Scheme. Your starting salary is a minimum of £850 a year which, by the end of your training, will have risen to not less than £1,200. From then on it's up to you. Senior management positions are open to you which are worth at least £4,500 p.a.

For fully informative literature write to: PERSONNEL DIVISION (REF. P.D.45), UNILEVER HOUSE, LONDON, E.C.4.





A BEAVER SPECIAL FEATURE

# UNDERGRAD

THIS feature is not an attempt to swim sensationally in the nouveau vague of journalistic inquiry into University morality.

It was conceived some five months ago. Although we make no claim to be scientific, we have from the outset tried to make a serious study of the peculiar problems facing the University Student today.

THE observations and the opinions of those who have been kind enough to help us in our inquiry were concerned with the students at LSE. However, though some may claim that the School is an unusual place and some of its incumbents even more unusual, we feel that the problems that arise in LSE are problems which confront most undergraduates at some period of their academic years.

Perhaps it will disappoint the popular press and undoubtedly some of our readers to learn that the most significant conclusion we reached was that the students at LSE as a body are essentially normal. It is true that drugs have been taken, abortions do take place, there are unmarried mothers at LSE, promiscuity is not unknown and drunkenness and gambling are not uncommon occurrences; but these occur among a minority in every social sphere and grouping.

Normalcy was apparent in every sphere. The major problems that most students at LSE seem to confront are normal problems. Loneliness is perhaps the most serious problem. A lack of emotional maturity and in some cases an abysmal absence of education in sexual matters is another cause of real

concern. Superficially the top 4% in the country may appear super-sophisticated but in reality we found few of them were and even fewer claimed that they were.

University life is sometimes referred to as a melting pot. Certainly at LSE all sorts, sizes, creeds, classes, nationalities and personalities are thrown together intimately for a number of years. Whether this process leads to the emergence of a new attitude to life, a new morality, or whether it merely means that for a few years their various moral codes are adapted to meet the strains and pleasures of undergraduate life, we are not competent to judge.

One thing however is quite clear. Students at LSE do not regard their years at the School as simply a breathing space between school and a future career which provides a useful opportunity to indulge in unlimited and unlicensed pleasures and vices.

For the convenience of publication the feature will be published in two parts.

This week we examine 'LSE's moral code' through the eyes of a woman undergraduate.



## 8 men whose future is clear

Every year about 8 outstanding graduates are given the opportunity of joining Turner & Newall, one of the strongest, most important though least publicised\* groups in British industry.

They enter under a broad and thoughtful training scheme which, recognising the scope of industry in general and T&N in particular, gives them time to discover the direction in which they can best employ and extend their talents. Every encouragement, including financial help, is given for them to acquire the further qualifications they may need. This flexible training invariably means that the graduate assumes managerial responsibility more confidently—and certainly earlier—than is often the case in industry today. The company also recruits scientists and engineers direct into its research branches.

Ask your Appointments Board for further details or write direct to:—

Management Appointments Adviser, Turner & Newall Ltd., 15 Curzon Street, London, W.1.

\* You may know the name but . . .

Turner & Newall (assets: over £100,000,000, employees: some 40,000) are frequently described as the 'asbestos giants' but, though asbestos remains a basic interest, their companies are also concerned in plastics, insulation, chemicals, mineral wool and glass fibre. *The Turner & Newall Management Appointments Adviser will be visiting London University on Monday 9th March 1964. If you would like an interview, please contact the secretary of the Appointments Board.*

**TURNER & NEWALL LTD.**

TURNERS ASBESTOS CEMENT CO LTD • TURNER BROTHERS ASBESTOS CO LTD • FERODO LTD • THE WASHINGTON CHEMICAL CO LTD • NEWALLS INSULATION CO LTD • J W ROBERTS LTD • BRITISH INDUSTRIAL PLASTICS LTD • STILLITE PRODUCTS LTD • TURNERS ASBESTOS FIBRES LTD and fifteen overseas mining and manufacturing companies.

TN2/21



Innocent Reverie

PART TWO — February 27th

The Normality of the mass

The Perverted Fringe



# MORALS '64



Mother's nightmare — myth or reality ?

AT the beginning of the present academic year, the students' union, imbued with a perhaps rare sense of responsibility for the non-participant majority, held its annual Freshers' Reception and Conference. I doubt if many of the girl freshers found it very enlightening.

Nearly all the freshers I spoke to at the end of the conference were thoroughly confused. The extraordinary mass of conflicting advice which had been thrust at them had only further confused them. Many wanted merely to be left alone to adjust to LSE life.

Four weeks later how many succeeded?

Even in their third year many girls feel that they have failed to come to terms with the environment.

A recent survey of London University students published in CMR points out that most undergraduates are 18 or 19 when they arrive here from their upper middle class homes.

From single sex boarding or grammar schools with rigidly defined social norms they arrive in London. Potential rebels. They are free from the rat race of working for 'A' levels, from parental security and the group standards of their old school friends. The hurdle of getting into University and escaping from home is passed. All that lies ahead is a rosy dream of the glamorous life of students; half-formed images of Saturday hops, Carnival week and occasional "lessons".

## unintelligible

Having had no experience of self discipline in work, she is taken aback by the fact that the School expects her to pursue independent study. Lectures are strange, classes a far cry from school and much of the work is new ground and completely unintelligible. There is no longer the advantage of being able to compare her progress with that of others. She is treated as if she were far more mature.

LSE has a tradition of selecting older candidates as far as possible, but the country's disjointed educational system combined with the present much keener competition for University places has apparently forced the School to abandon this policy.

And her social life? Coupled with her lack of focussed information about life at University is a lack of experience in coping socially with a mixed community. But she is determined to succeed with the opposite sex — after all this is

probably her first opportunity of meeting them en masse. She is overconcerned with her image and how other people expect her to behave. Unfortunately the only observable 'norm' among LSE students is to be interesting — to be different. Loneliness often forces her to be in too much of a hurry, to try too hard.

Occasionally a girl is misled by the attempts of the male population in LSE to convince her that promiscuity is customary. Usually she becomes aware later that this behaviour meets with the disapproval of the vast majority of her fellow students.

## ridiculous

The ridiculous behaviour pattern was summed up by one of the fast-fading freshers of 1963:

"I wanted to be a popular person around the School — I got used to blue jokes, I wasn't exactly displeased after a while when people made personal remarks about my figure. This seemed to make me universally considered fair game. I was constantly bombarded with invitations to go to bed."

Somebody should tell girls at the beginning that this lasts right through their university days and the only thing to do is to decide at the beginning what their attitude is going to be. Most people agree that there is nothing wrong in criticizing and changing your standards but some freshers never give themselves a chance. Instead of overcoming loneliness and insecurity — as a certain number do — by taking a real interest in other people or by taking part in some sort of Union activities, they succumb to the shallow relationships so often suggested by the male population of LSE.

## isolation

This situation is aggravated by the enforced isolation of bedsitters. LSE has no woman's Hall of Residence. The competition for a place at one of the three inter-collegiate halls is extremely keen. In any case many girls do not apply for hall — they abhor the life dictated by hall regulations; remember they left home to be free.

As a fresher, just arrived at college, a girl has no opportunity of sharing a flat.

The resultant alternative is a single bedsitter. She is lonely, probably unconsciously and unwillingly

homesick and without a guideline of any kind.

As a direct result of this confusion on the girl's part, unwillingness on the part of parents to give sex instruction and lack of forethought on the part of the School authori-

ties or the Union on housing, pregnancy is a real threat to many girls. We quote a tutor concerned with advising women students:

"One of my nightmares is to arrive at the School one day, to be informed that a girl has died from the butchery of a back-street abortion". Parents, or a girl's former school, have usually been too timid, apathetic or blind to reality. The School's general practitioner commented that he was amazed at the lack of sex education among the women students at LSE. He added that he made it a point always, when the opportunity presented itself, to state categorically that 'babies are not found under bushes'. This may seem unbelievable but there IS a need for sex education.

## wilful blindness

There is also a need for an honest policy towards contraception in Universities to-day. Surely it is better to provide girls with contraceptives and inform them of such availability. The argument that this increases 'immorality' is out of date and due to a wilful blindness to the real position of most girls. To be left 'holding the baby' has become a reality for the few. For many more there are days of mental anguish and self-torture over false alarms. This could so easily be avoided by provision of information on contraceptives.

This is still not enough. For the girls who do leave school and then spend their university life living in hall and mixing predominantly with females the problem of attaining

maturity isn't by any means solved.

Nor do those who have a lonely start and rush into superficial relationships with the opposite sex usually find the answer.

Nor does providing contraceptives get to the root of the problem.

The basic need is help in adjustment. When will university authorities wake up to the two kinds of lives their female students lead?

## student flats

Surely the answer is to provide some sort of residential facilities where they can begin to be semi-independent? Why thrust on them all at once the need to cook and look after themselves, direct their own studies, find friends, their philosophy of life AND somewhere to live? If at least the former were provided by the authorities in the form of student blocks of flats or bedsitters, finding friends and a social level would follow naturally.

## soul destroying

As one overseas student commented:

"The worst thing about coming to LSE is having to find somewhere to live — alone — and the weekends are soul destroying."

If these problems were solved, we would probably have fewer girls leaving due to pregnancy, less of a load on the school psychiatric services caused by the confusion and depression of many female students and — most important of all — better adjusted female graduates at the end of three years.

Unilever Profile No. 1

## "About 5 feet 6. Blonde. Blue eyes"

Peter Salt by Peter Salt

**Line of work.** Marketing. I approve those things they squeeze between television programmes when people hurry to the kitchen for a glass of milk.

**But what would you really rather do?** Nothing. I don't mean not do anything. There just isn't anything else I'd rather do.

**Driving Force.** The usual one. A hungry wife. Two hungry children. A hungry cat and a hungry dog. Besides, I get hungry too.

**Most paradoxical quality.** I'm lazy. I can watch my wife mow the lawn without a qualm of conscience. Yet at the office I work hard.

**The terrible temptation.** About 5 feet 6. Blonde. Blue eyes. Luckily I married her.

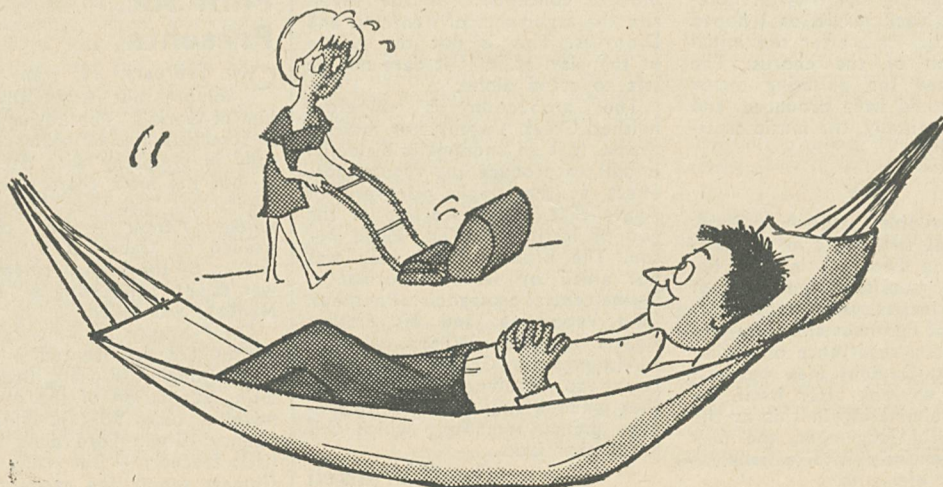
**Unfounded fears.** Being old and broke. But I have a good job with a future and earn a good salary.

**Personal panacea.** Work when I'm upset at home. Home when I'm upset at work. The local when I'm upset at both.

**Greatest satisfaction.** Joining Unilever after I went down. A man's choice of career is one of the biggest decisions in his life, and his greatest satisfaction is being able to look back and know that he chose the right direction. In Unilever I've found security and financial reward combined with excitement and growth. Within Unilever there is room for expansion in whatever direction a man interested in commerce can desire... management, industrial, technical, production, marketing. I enjoy my work. That's my greatest satisfaction.

*If you are choosing a career in industry you should consider the Unilever Companies' Management Development Scheme. Your starting salary is a minimum of £850 a year, which by the end of your training will have risen to not less than £1,200. From then on it's up to you. Senior management positions are open to you which are worth at least £4,500.*

For fully informative literature write to: PERSONNEL DIVISION, (REF. PD.45) UNILEVER HOUSE, LONDON, E.C.4.





# the arts



Peter Sellers and Co. face end of the world

## THE BACCHAE

# The Wheel of Fate

**B**ERNARD MILES' new production at the Mermaid is Euripides' best known play on the myth of Dionysus, god of wine. The women of Thebes are caught up in the cult and abandon the city to worship. This is the right time, for in conception, this is a religious experience.

The play's idea is unequivocal. Mind is not the only governing factor of men; we must beware of being guided entirely by reason. The secret of life is balance and tolerance. In this production, the Bacchae as we saw them were enjoying a simulated sexual orgy. No more. There was none of the force of the chanting involved in ceremonies of black magic, as I hoped might be the case after the initial introduction of the chorus. The chant lacked the pulsating terror which it could have produced, and which, incidentally, the music created admirably.

### jelly

The inevitable nature of Greek tragedy was sadly lost in a dichotomy of the director's interest between the morals of the Bacchae; and the instinct as against rationality-argument of Pentheus and Dionysus. Agave's act, a recurrence of Sophocles' Jocasta-Oedipus idea was dimly left to look after itself. Instead of culminating in this as the final dreadful judgement, the play collapsed entirely into a jelly of undramatic elements.

The Chorus, an indispensable part of Greek tragedy were allowed too much freedom. In the original production they were essentially only a commentary on the action; just as the Herdsman, superbly played by Joss Ackland, reports, so do they. Instead they were conceived as participants in the action — to my mind, a mistake and detraction from the power of the original play.

### modern

The dramatic impetus of the play fails because the tragedy in the Greek idea is lost in the modern interpretation. The central concept of the tragedy is its inevitability; the wheel of fate will turn, and yet our attention is distracted from this by an over-emphasis on the modern conception of the revels and the arguments of Pentheus and Dionysus. This is not the centre of the play, at least it dare not be left to stand alone.

The production is therefore neither Greek tragedy nor modern drama. It is an undramatic dialectic; it fails to produce any recognisable effect at the tragic discovery of Agave that in her worship of the god of instinct she has killed her son. The drama of the play was not aided by weak performances by the central protagonist, Pentheus, John Woodvine; and his mother Agave, Josephine Wilson.

Although the Greeks did not attempt to involve their audience, they undoubtedly set out to produce drama, something which this production lacks.

Geoff Wansell

# Dr. STRANGELOVE or: How to Die Laughing!

"**DR STRANGELOVE**" is, as everybody probably knows by now, a comedy about the annihilation of mankind. From the moment a USAF base commander goes quietly berserk and orders a bomber wing to attack Russia, in order to destroy the worldwide communist conspiracy which is "sapping our vital bodily fluids", the whole carefully-designed apparatus of nuclear terror turns into a Frankenstein monster. Nobody is actually to blame, it seems.

Kubrick has shot his subject as both comedy and tragedy. This often becomes a sequence of realistic terror ending an interlude of a typical Sellers farce — but this is not to undervalue the subtlety of Kubrick's method. In most "newsreel" sequences, his eye for the incongruous or grotesque detail — the B.52 pilot's stetson hat and Will Roger's folksiness for example — gives its apparent intention an extraordinary edge; and conversely, comedy sequences (like the RAF officer attempting to telephone the US president the recall code from a call-box) never obscure the basic subject of nuclear disaster.

### chilling

The point of Kubrick's method is that the comedy is not "light-relief", as in abysmal British war-films: it is integral with, and stems from, his basic premise that mankind's destruction is basically grotesque. So, it is chilling when the men in control of the War machine reveal their varying degrees of insanity simply by pushing logical reasoning and action to the point of farcical absurdity; and paradoxically "funny" when largely "normal" people are faced with the incomprehensible concept of the end of the world.

This response to the subject surely, is a stroke of genius. The "daring response" is the "On the Beach" one of the middlebrow's darling Kramer, in which one rather hopes the need of the human race will not too severely interrupt the beautiful relationship of Ava Gardner and Gregory Peck, but here the terrifying subject provokes an indirect, complex treatment, and one stemming logically from terror. One is put in mind of Chaplin's burlesque of Fascism in "The Great Dictator" Kubrick's virtuosity does not end there; as he cuts from the bombers in flight to the President in the war-room or the berserk Commander in his base Kubrick alters his style entirely. Newsreel realism is used in one scene, studio fantasy or science-fiction melodrama in the next.

The mixture of styles is brilliantly done; but somehow one feels tempted to use the classic British slight of "too-clever by half": Kubrick's weakness for farce and a mocking unreality dominates the scenes with "Dr Strangelove", or the Russian ambassador. We never quite know the terms on which the film is to be taken, while appreciating the unsettling effect created by this same uncertainty. At the end, a USAF General argues that the Americans

going underground for a century to escape contamination must take bombs with them to stop the Russian survivors getting up to their old tricks: what is one to make then of one's criteria of normality?

### precision

Really, though, those excuses are not needed. To the pelting energy and cold cunning of Kubrick's style add the essential ingredient — control. Peter Sellers and George C. Scott, perform with a comic precision in which Kubrick's hand is clearly visible, but not one of the memorable caricatures impedes the flow of the narrative.

This is the coldest, bitterest, bravest, most scathing reaction to human folly the cinema has produced for years; with misanthropic ardour it claws the facade of reason from the mid-twentieth century, and blisters every belief it touches. "Dr Strangelove" establishes Kubrick as the Swift of our age. And for once the comparison does not seem absurd!

Gareth Davies

## ODDS AND ENDS

THE Warner Cinema is to shut for the summer months, re-opening with bigger screen and better projection facilities. I hear its opening film is to be "Cheyenne Autumn" with Widmark and Stewart, which is expected to be on an all booking basis, until "My Fair Lady" opens in 1965.

★ ★ ★

PENGUIN are to produce the paperback edition of 'The New English Bible' in March.

★ ★ ★

THE Mermaid's production after "The Bacchae" (reviewed this issue) is to be the "Royal Commission Revue" with the Temperance Seven, Valentine Dyal, and written by John Antrobus and Spike Milligan, who wrote "The Bed-Sitting Room".

★ ★ ★

### Film Soc. Presents

ON February 18 Jean Renoir's sombre but essentially Gallic film of Gorki's "The Lower Depths" is screened. Renoir seems only fitfully in sympathy with the subject — but the most characteristic moments of "Les Bas Fonds" are vintage Renoir — and the cast, headed by Gabin, is a formidable line-up of the French cinema's pre-war talent. Supporting is "The Day Mandete was killed."

On February 24 American lower depths are represented in "Blackboard Jungle", Richard Brook's exciting adaptation of the sensational novel of New York Juvenile Delinquency; Glenn Ford plays an idealistic teacher — Bill Haley and the Comets supply the cacophony.



# PENGUIN PRESENTS

Penguin presents in its February collection a good deal for the connoisseur.

**JOHN GUNTHER'S "Inside Russia Today"** (6/-) is an outstandingly readable and objective guide through the whys and wherefores of Russian life today.

This is a long book, and mainly one for browsing through. It is also somewhat out of date (written in 1962). But the general outlook still holds good today and it is a marvelously realistic one for an American to possess. No false hopes, no biased denunciation of Communism; the work of a great reporter who can always see the other person's point of view.

This is Gunther's hope for peace — that by understanding more about this "ogre on our doorstep" we shall learn better how to live with it.

### Down and out in Paris and London

The Rich Man's "Road to Wigan Pier" — superb, but a social document. It does not pretend to give an easily digestible message specially for the Library shelves. Orwell needs no recommendation; an absolute necessity for fanatics, for the unconvinced an irrevocable argument.

"CASANOVA'S Chinese Restaurant" is the fifth book in Anthony Powell's "Music of Time" sequence. Covering the period 1936-7, the public troubles of Spain and the Abdication are shadowed in the personal and matrimonial worries of Nicholas Jenkins and his upper-class Bohemian friends. Faultlessly written, "Casanova" is an outstanding modern novel by any standards.

### Hadrian VII

THIS is a portrait of a brilliant, lonely man who, after years of unmerited failure, suddenly achieves self-realisation as His Holiness Pope Hadrian the Seventh.

His character is inextricably bound to that of his creator, Fr. Rolfe, who endured the same kind of frustration throughout his life... but without final fulfilment.

"THE LAST BATTLE" is the seventh and final book of C. S. Lewis' series of childrens' books about the mystical land of Narnia. The seven books are heavily shrouded in allegory; in "The Last Battle" the final struggle against the forces of evil comes to a glorious conclusion as Lewis successfully disposes of Narnia by letting us see it die.

Don't scorn childrens' books; this one is well worth reading — it moved me far more profoundly now than it did when I was twelve.



Second - Round Replay: Gutteridge Cup

# RUGGERMAN KO'd

IN the second round replay of the Gutteridge Cup against Goldsmiths a week ago yesterday LSE were beaten 6-0.

In a typical dour cup struggle, which provided little open rugby, Goldsmiths held an LSE onslaught for the first few minutes. The early LSE battering was survived and within nineteen minutes Goldsmiths took the lead. A penalty award for offside was awarded in front of the posts and Goldsmiths went in front by 3-0.

Ten minutes later an LSE defensive error enabled the opposition fly-half to make a break. Clever linking with his forwards and good handling put the winger away in the corner for an unconverted try.



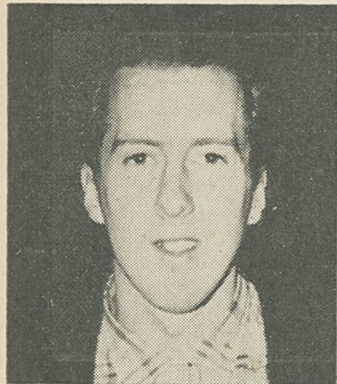
A line-out leap



Cup casualty John Weir being brought round by captain John Kirkham and Alan Thomas.

Goldsmiths closed the game up entirely. Throughout the second half LSE were unable to combat these tactics and the pack — which had looked so dominant in the first game — was pinned down and seemed incapable of raising any enthusiasm or fire. The backs lacked penetration but were hampered by an injury to speedy winger John Weir.

A vociferous and loyal band of LSE supporters saw the game peter out into a dismal display of negative rugby.



**SOCCER** Fixture Secretary Bob Pedlingham reckons that he has made several hundred phone calls in that capacity this year. His is a job which entails an enormous amount of work.

Bob is 21 and prematurely in the process of balding. He worked in Birmingham with G.E.C. before he came to LSE. 'The whole thing was tedious and boring', he told me over a cup of tea in the St.

AS part of LSE's contribution to this year's Rag Week there are to be pub crawls leaving the Three Tuns Bar each evening to take in the West End Pubs. Parties will leave at 7.00 p.m. It is hoped to provide musical accompaniment to the charitable drinking. It is hoped that each AU club will organise one night's crawl. In addition there will be a charity football match in Lincoln's Inn Fields using a plastic dustbin in place of a ball. All those interested in participating in any of the above mentioned events should contact either Mr Chris Powell through the Union Office or Mr Bob Pedlingham through the usual channels.

## 'I CONDEMN'

Beaver Sport's Editor Speaks

AT the last AU meeting Malden meals were under fire yet again. The increase in price has not been well-received and last Wednesday only one LSE club member out of the 33 playing at Malden had ordered tea. As far as can be seen the quality of the meals has not improved in spite of the increased cost and AU assurances.

### not satisfied

At the meeting the AU made it quite clear that for their part they were not satisfied with the standard and emphasised that they are in close consultation with the school as to what can be done to remedy the situation. Beyond that they refused to comment.

### Beaver says

What Beaver says: It would seem that the school is reluctant to take decisive action over the disastrous standard of meals at the LSE Sports Ground. Three points are clear: (1) In comparison with meals at other colleges, LSE teas come very near the bottom of the list. (2) The school wants definite facts and

evidence before it will take any decisive step to improve the position. (3) The meals could be produced much more cheaply and much more efficiently by adopting a system other than that of a resident steward.

### no replacement

However we would like to make it quite clear that the answer does not — contrary to popular belief — lie in the replacement of the present steward. Nevertheless, he was not qualified when he took the job and was in fact the only applicant when the post became vacant.

### short sighted?

Whether or not this can be adjudged a short-sighted appointment in the first place it is not our place to comment. What is obvious is that something must be done and done soon.

However it would be ludicrous to advocate immediate action without serious thought. The whole matter must be carefully considered so that this undesirable position does not recur. It is up to the AU executive to put this clearly and straightforwardly to the school, and to keep on complaining until some positive action is taken.

Alistair MacDuff (Sports Editor)

## Bob Pedlingham : Profile of a BACKROOM BOY

Clements building. "I was a student apprentice in accountancy but just felt I wasn't getting anywhere. I'm not interested in making a fortune, I just want to do a worthwhile job and do it well."

Bob is one of the backroom boys in LSE sport. He is a member of the third team but has had the occasional outing with the second eleven and one appearance for the firsts.

The soccer club runs five teams and this makes his work all the more exhausting. "There are many difficulties," he told me. "We have only two pitches and with five teams this means an extraordinarily high percentage of away fixtures. In addition we have to lend this pitch to the Economicals on some Saturdays. We do use the adjoining pitch (belonging to 'Elder and Fyffe') on some Wednesdays but the slightest bad weather and they stop us using it. All this plus frequent cancellations means that I am constantly having to amend and adapt the fixture list."

I asked him what changes he would like to see in administration of sport at the college — and in the soccer team in particular. "Sport is the poor relation at LSE" he said. The main trouble is that we

## Around the clubs

# sport

### SOCCER

LAST Wednesday LSE first eleven drew 1-1 with IC. LSE led for much of the game and IC's equaliser came only two minutes from the end. Goalscorer was Summers. The previous week LSE had gone down by 2-0 to the same team on their ground.

On the same day the second team were unfortunate when they were beaten 2-1 by IC, IC's two goals both coming in the last ten minutes.

A week ago last Saturday LSE entertained St. Edmunds Hall (Oxford). The match was against the second team which was beaten 2-1. LSE's goal was brilliantly scored by Scott from a Pele-like banana shot. Oxford's goals came from a penalty and a break-away.

### SUPPLEMENTARY

THE LSE soccer team has dropped further back in the League. They went down 4-3 to QMC a week last Saturday and are now well below the halfway mark in the table.

Last Saturday they played the same team in the Semi-final of the cup. For a full report on this match — see late supplement.

### LADIES' HOCKEY

WOMEN'S hockey Captain, Judy Hart, accuses LSE women of being apathetic towards sport. "It's about time they dropped the idea of women hockey players being big and beefy," she commented.

Thanks to the loyal support of those girls who DO play, the team has managed to do particularly well so far this season. Of their matches, seven have been won, three lost and one drawn.

It's a pity that each team-member has to play twice a week every week to make up the full complement, since there are no reserves.



A Boat Club Christening

just haven't got the money." One of Bob's pet hates is the fact that this lack of money means that LSE is unable to give visitors from outside London the same sort of treatment they give us.

Asked what he thought of soccer at LSE, he felt that it was "on the up", after playing in local football he found it refreshing to turn out now for an LSE side where physical force had been replaced by skill. However he did not regard the experiment to field five sides this season as a success and is going to suggest that next year there should be only four teams.

In addition he thought that there should be fewer and bigger trips outside London and at the moment he is attempting to put this theory into operation. He is busy organising next year's provisional fixture list with all teams playing out of London on the same day.

### WATER POLO

LSE Water Polo team suffered its first defeat of the season last week when beaten by IC. Injury to the LSE goalkeeper meant that LSE fielded a weakened team which although leading 3-1 at half time went down 4-3 in the end. Goalscorers were Bull (2) and Church — all brilliant first-half efforts.

Defending the more vulnerable deep end in the second half LSE were forced to switch Church in to goal and despite dour defensive play and a series of great saves by the deputy keeper IC notched the necessary goals to give them the points.

Team spirit remains high and this still represents one of the most promising starts to the season in recent years.

### NETBALL

THE newly formed Netball Club has played its first two games this week — against Westfield College and Reading University. Still in the initial stages of development, the club fields one team but hopes to enter two in the ULU league next season. With two combined English University internationals, the team promises to pose a serious challenge to the more established clubs in the league. Results of the first two matches in the late supplement.

### CROSS COUNTRY

THE QMC seven and a half mile race last week was declared null and void because only two of the three laps were completed. LSE had done well in the race and this blunder on the part of the organisers may have cost the team the runners-up position in the league.

In the UC invitation race held at Parliament Hill a much weakened team finished ninth out of 20 teams.

The closest race of the season, at Mitcham on February 1st., resulted in a one point victory for Kings (53-52). An unfortunate fall by Carl Stott when he was well placed cost LSE a 'double' over their closest rivals. Guy Ogden had his best race since he came to LSE and was third man home closely followed by Colin Craven. The team remains in second position in the league with two races remaining. The second team is in eighth place in the second division, out of 30 teams.

THE Presidential elections of the AU will take place on the following dates: For President — Monday and Tuesday 2nd and 3rd of March. For the two Vice presidents — 9th and 10th of March. Nominations for President close February 29th; for VPs and Secretary — March 7th.

## SIMMONDS

University Booksellers

Our shop is not the biggest in London, but it is among the best.

And it's a place where you will obtain individual attention.

We stock most of the books on your syllabus, and we are five minutes from L.S.E.

16 Fleet Street, London, E.C.4  
(Opposite Chancery Lane)



BEAVER 38

Editor ..... David Mills  
 News Ed. .... Rod Gould  
 Features Ed. .... Bud Peterson  
 Arts Ed. .... Geoff Wansell  
 Sports Ed. .... A. MacDuff

Asst. Ed. .... Stan Fischer  
 Picture Ed. .... Frank Payer  
 Business .... Niru D. Naik  
 Sales ..... John Burdett  
 Distribution ..... Tony Eaton

Published by the Students' Union of the London School of Economics and Political Science.

# Hustled Hustings

The hustings for the presidential elections were a fiasco.

Last term the school authorities instructed the Rooms' Booking department not to allocate rooms for the purpose, so arrangements were made to hold them in Lincoln's Inn Fields.

A CND speaker refused to be moved from his stand in Speakers Corner, Lincoln's Inn Fields. 350 students and a number of hangers-on were forced by police to move to the Southern corner of the Fields.

Cabbages flew and a good-natured policeman received a flour bag on his right ear before the crowd was again moved on.

Watched by office workers and lunch-time patrons of the George, they reassembled at the back of St. Clements' Building, and finally, an almost inaudible hustings programme was rushed through in the concourse area.

Returning Officer Roy Burke commented "It was a pity that the running-water-for-candidates-scheme couldn't be used."



## NEWS IN BRIEF

### Provincial morality

THE major problem in attitude is not a puritan morality, but treating students as schoolchildren."

This is the view of one member of the Oxford University Student Council, which has just published its findings on the subject of punishment for those offences at the University that involve sexual morality.

The Council recommends, inter alia, that:

- (1) College scouts should no longer be used to enforce discipline
- (2) Colleges should do all within their power to prevent the bribery and blackmail which result from the present system
- (3) the students involved should be allowed greater facilities to defend themselves.

The aim of the Oxford Student Council is to safeguard the interests of Oxford undergraduates. Many students at Cambridge are envious of this Council because their University has no exact counterpart to it.

The Cambridge students' newspaper "Varsity", commenting on the Oxford Report, states categorically that the decisions of dons in these matters often seem 'arbitrary and sometimes high-handed'.

In order to show that "Varsity" is also 'with it', the magazine suggests in its leader-column that Cambridge make a break with the past, and introduce co-education into its next undergraduate College.

Oxford is, however, again one step ahead of Cambridge — the former has discussed the possibility of reorganisation; Cambridge has not . . . yet.

### Again

Another Arab-Israeli territorial dispute has broken out . . . at Leeds University.

The origin of the dispute was the failure, at an Arab Exhibition, to recognise the existence of the State of Israel. An Arab map, on display at the show, labelled that narrow strip of land west of Jordan as 'Occupied Palestine'.

The map and several posters were

stolen, the map previously having been crudely defaced.

Complaints were made against the Arabs that the exhibition, being outwardly a cultural one, was in fact being used for propaganda purposes and for the dissemination of political leaflets.

The Arabs retorted that the Jewish students had already staged an exhibition about Israel putting forward the Zionist case. Furthermore, say the Arabs, there has been too much "anti-Arab vituperation" by persons ignorant of the Arab side of the case.

"Thanks to the exhibition," their spokesman concludes, "no-one should be in doubt any longer about either side of the conflict."

### Monotony

ONE hundred students at Birmingham University are planning to play a marathon game of 'Monopoly' lasting 150 hours (over six days).

Teams of four, playing in shifts, will take part in the 'Monopolothon', with one special group playing for 14 hours non-stop. If that group lasts out, then it will break the present "long-playing" record of ten hours.

The rules have been amended so that the game never ends: if a player seems to be obtaining a monopoly, the bank "nationalizes" his property.

### Backwash

Manchester University has 'out-stripped' Oxbridge (or Camford) in the race to impart a modern image of sexual morality.

By a 'tradition' dating back (it is said) to 1660, Mr. Espinoza, a Union Council member at the University, was accorded ordinary membership of the Women's Union. No extraordinary feats have to be accomplished as a qualification for membership of that 'body'.

Mr. E had merely to wash himself in the women's showers and allow his back to be scrubbed by at least two women. While having his back scrubbed, he had to shed every article of clothing.

He regrets only one thing: he felt unable to comply with the wishes of a girl in the bath who asked him to join her. The reason for his refusal was that this was not a part of the 'tradition' in the Women's Union.

### By Night

The men of the Rugby Club at the University of Newcastle-upon-Tyne have been in trouble lately.

Two police-cars intercepted the Club's coach on its way back from St. Andrew's. Some items, previously situated in St. Andrew's, had disappeared and the police believed them to be in the coach. After immediately finding a Walls' Ice-Cream placard therein, the police decided that further investigations were necessary.

While certain individuals were being questioned, the team was allowed to make use of the police recreational facilities until the inquiries were concluded at 3 a.m. These facilities consisted of dart-boards.

## MUSIC SOC'S OXFAM EFFORT

THE LSE Music Society raised £80 for OXFAM by organising a concert in the Shaw Library last Wednesday.

Among the performers were Professor Moser and Gordon Kirkwood who played a Mozart sonata for two pianos. The Pro Musica ensemble and members of the ULU and LSE orchestras played works by Bach, Beethoven and Telemann.

# RAG WEEK TO RAISE £14,000

LSE is playing a larger part than ever before in this year's rag week — during which it is hoped £14,000 will be raised for charity.

This is double last year's figure.

Two LSE men sit on the central committee which is responsible for the over-all planning of the London Student's Carnival — London's rag week — which starts on Saturday. They are Tony Fielding and Geoff Wansell.

### Rag Mag

Tony is in charge of the Carnival's financial management while Geoff is managing director of the LSE team which produced Rag Mag under editor Mike Cunningham.

Rag Mag — said to be the best ever — spearheads LSE's money raising drive. With an anticipated sale of about 60,000 it is hoped to raise £5,000.

The week will be launched noisily on Saturday night when LSE joins with King's to provide a mammoth "Shake Session".

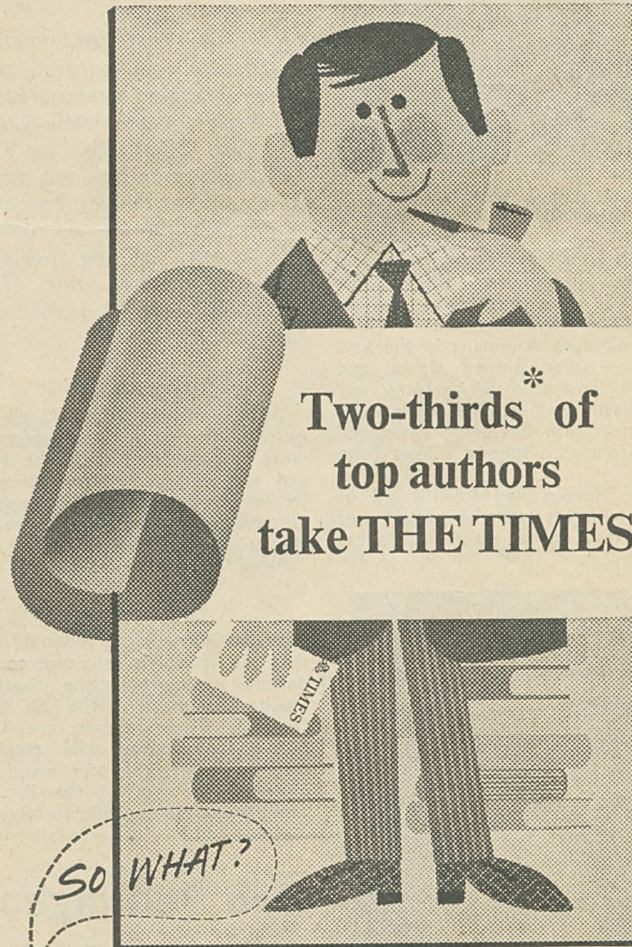
Stars of the night will be Denny Seyton — straight from the Cavern — the up-and-coming Hustlers and the brilliant Sabres.

This will launch a week of explosive activity for LSE. Major stunts planned by college organizer Chris Powell include a marathon bridge game, a busking jazz band and an attempt on the world hand-shaking record.

### More help

"The plans are made and we have a lot of people lined up to help", Chris says. "But to really make it a success financially we need more help.

"It's ridiculous organizing stunts if you can't get the maximum number of collectors to make it worth while".



\*  
Two-thirds of top authors take THE TIMES

So only this: these particular Top People must keep themselves fully and widely informed. They must be aware not only of happenings in their particular field, but of discussion and comment on questions of the day, international news, politics and the arts. For all this, they turn to THE TIMES.

You may not want to be a top author: lots of people don't. But the same is true of top dons, top businessmen, top politicians. Whatever kind of top person you hope to be, it's not too early to get in training now by taking THE TIMES regularly. Especially since, as a student, you're entitled to it at half price: ask your newsagent or write to THE TIMES Subscription Manager.

\* The exact figure is 66%. We are aware that this is 0.6 recurring less than two-thirds: please do not write to point this out. Do write, however, if you would be interested in an account of the research which produced these and many other revealing figures. Who are Top People? What do they think on the important issues of the day? Write to The Times (Department SP), Printing House Square, London EC4.

## JEWELLERY & WATCHES

25% DISCOUNT

TO ALL N.U.S. MEMBERS ON OUR OWN MANUFACTURED GOODS DIAMOND ENGAGEMENT RINGS.

GOLD—Wedding and Signet Rings. GOLD AND SILVER — Cigarette Cases, Powder Boxes, Bracelets, Necklaces, Charms, Brooches, Ear-clips, Links, etc. SILVER & E.P.N.S.—Tea-sets, etc. OPEN Weekdays 9-6 Sats. 9-12.

10%—20% DISCOUNT

TO ALL N.U.S. MEMBERS on branded Goods — Watches, Clocks, Cutlery, Pens, Lighters, etc., and on Second-hand Jewellery.

GEORGES & CO.

88/90 Hatton Garden, E.C.1

(Entrance in Greville St.)

HOL 0700/6431

Special attention to orders by post or phone.