



When the crisis  
bites see who  
they lash out at!

MONDAY, 3 OCTOBER  
O.S.A.C. MEETING TO  
LAUNCH THE FEES  
CAMPAIGN

1:00 OLD THEATRE

WEDNESDAY 5 OCTOBER  
EMERGENCY UNION  
MEETING TO DEMAND  
REGISTRATION ON  
ARRIVAL

2:00 OLD THEATRE

# FEES STRIKE!

THE STRUGGLE AGAINST THE FEE INCREASES CONTINUES — READ ON . . . .

IN the face of the continuously rising fees and the School's refusal to join with the Students' Union in making a principled stand against Government policy, the Overseas Students' Action Committee and the Students' Union call upon all Overseas students and British self-financing students to **INITIALLY WITHHOLD YOUR FEES.**

The rising fees and the growing dependence of universities on income from fees (in LSE fees income is 25 per cent of the total income of the College), have for the first time given students an economic weapon. By withholding your fees now, you will give students a chance to come together when term officially starts and make a decision as to how best this new and powerful weapon can be used.

We realise that for many students (including those whose fees are paid by Local Education

Authorities) it is not possible to participate in this action. We call upon these students to participate in the other actions that OSAC will organise in the coming term, and to stand by to support in every way possible these students who are withholding their fees.

However, the fees increases are not an isolated phenomenon. They are part of the growing racism and fascism in this country and in the coming year we cannot expect a decrease in the attacks.

In the coming year every student must dedicate himself to fight against racism and fascism wherever they appear. The fees increases, the racist attacks on the street, attack on the rights of workers to organise Unions, the growth of the fascist parties have all to be fought.

If Britain is to be prevented from becoming a fascist country let us therefore pledge to make the next year a year of action; organise and fight on all fronts.

AT the end of last year the school authorities posted notices all over the School premises informing students of registration regulations for next year 1977/78. Point 3 of this notice says:

"At re-registration these students who are self-financing will be required to pay either the sessional fee in full or at least one term's fee at the appropriate rate before being issued with admission cards."

This procedure was a change from that followed for undergraduates in previous years when students were issued with registration cards on arrival.

The School's repeated statements that the procedure for registration of undergraduates has not been changed is patently untrue—self-evident to any who have been here in previous years.

The school is well aware of the real hardship being suffered by all self-financing students by the fees increases and has tightened up registration procedure to make entry into LSE more difficult for those in financial difficulties. Not only this, but they intimidate prospective students "several months before they arrive" with news of the changed procedure and demands for financial guarantees.

The school clearly knows and fears the militancy that the fee increases have aroused over the past two years, and is trying to protect its own interests at the expense of students in the face of a new offensive against this policy.

It is essential that the next step in our campaign is to demand a resumption of the old procedure, of registration on arrival irrespective of payment of fees.

ON August 13th, thousands of Trade Unionists, students, black kids, Millwall fans and punk rockers assembled on Clifton Rise, Lewisham. Included were also a large number of LSE students.

The object: to stop the National Front from marching into Lewisham, and to drive them physically from the streets.

The reason: the NF are avowed racials, and in a time of economic crisis, they are making our black brothers and sisters the scapegoats. They are Nazis, in the Hitlerite mould, who wish to gain control of the country by showing the ruling class that they have the muscle to smash Trade Unions and socialist organisations.

They thrive on violence, drum-beating marches and physically intimidating the black and Asian communities. The mealy-mouthed Liberals have no answer to this.

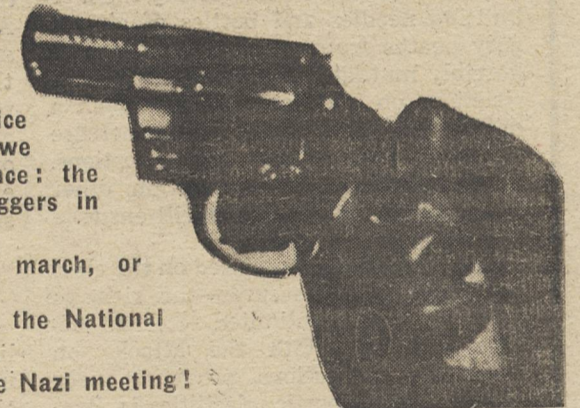
The call was "they shall not pass" and we drove them off the streets.

As in Germany and Britain in the 30's, the police protected the Nazis. We were undeterred: we answered their violent provocation with violence: the black kids' anger against these uniformed muggers in blue exploded—but who can blame them!

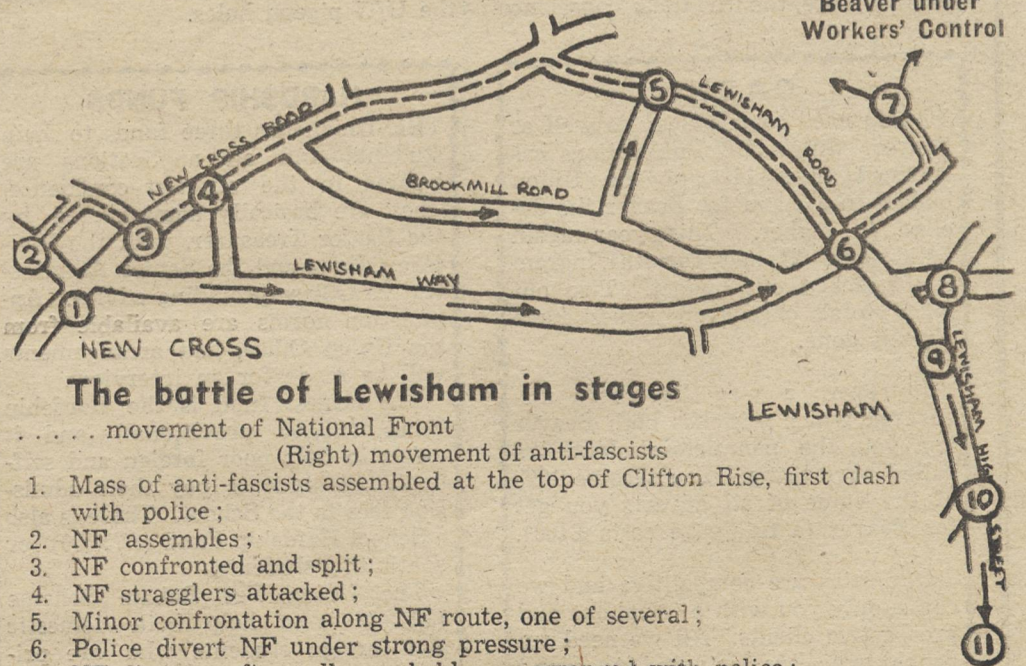
We stopped the Nazis. Whenever they march, or organise, we shall disperse them again.

Black and White, Unite and Fight! Smash the National Front!

October 8th—Hyde, Manchester. Confront the Nazi meeting!



Beaver under Workers' Control



## The battle of Lewisham in stages

- ..... movement of National Front  
(Right) movement of anti-fascists
1. Mass of anti-fascists assembled at the top of Clifton Rise, first clash with police;
  2. NF assembles;
  3. NF confronted and split;
  4. NF stragglers attacked;
  5. Minor confrontation along NF route, one of several;
  6. Police divert NF under strong pressure;
  7. NF disperse after rally, probably pre-arranged with police;
  8. Police and anti-racists clash by clock tower—riot shields brought out;
  9. Police force anti-fascists up Lewisham High Street;
  10. The worst violence, police, police vans, police motor-cycles and Police Station stoned;
  11. After police have largely dispersed anti-fascists, we manage to reform and march triumphantly to Catford Railway Station.



# POST-BENYON

## Benyon's bastard revisited

**THE Benyon Bill has failed, not due to the activity of NAC and other pro-abortionist groups, but because of the inadequacies of parliamentary schedule.**

There is no room for complacency; come the next session, it is probable that another pious Private Member's Bill will be introduced, or, with the advent of a Tory government under the auspices of Thatcher, a government sponsored bill severely restricting access to abortion except for the wealthy. The inevitability of such a measure is emphasised when regarded within the context of women's oppression as a whole.

During the recent massive public spending cuts, women, as the most vulnerable, least organised section of the working class, have been the first to suffer—the first to be sacked. This process is invisible, for redundant women often return to the home and do not register as unemployed. More visibly, we have witnessed the closure of the E.G.A.—the only hospital run by women for women, the farcical nature of the Equal Pay and Sex Discrimination Acts and the ineffectiveness of the Equal Opportunities Commission.

### The Lessons

To fight further encroachment upon our rights we must learn from the lesson of the anti-Benyon Campaign. Rather than wait complacently for another reactionary abortion bill to appear in parliament, we should launch an offensive aimed at extending access to abortion, free abortion on demand, and an increase in out-patient clinics for quick, safe abortions.

We should expose measure like Benyon's for what they really are—(something that NAC failed to do)—as scurrilous attacks on women, driving them to knitting needles and bottles of gin, to gory deaths from infected wombs, and horribly mutilated foetus. Tightened restrictions on abortion will not mean a drop in the overall total but an increase in the number of back-street abortions. If we lose the fight on abortion, other curtailments on our rights will ensue.

Emphasis should be placed on the class nature of such measures—the rich, as ever, will retain unlimited access to private abortion. With the attacks on charitable institutions providing very cheap or free abortion facilities in Benyon's measure, the invidious 'conscience'

clause as an escape route for doctors, the difficulty already existing in certain areas in obtaining abortions, those unable to afford private abortions will be forced into the hands of unscrupulous back-street abortionists.

Benyon, and his crew of bishops, bigots, Tories, pious methodists, crimp-lene-clothed wealthy old women, wishes to force us back to the drudgery of the home and uncontrollable fertility, to deny us the right to free our bodies from the abuse of multiple child bearing.

### The Real Struggle

The pro-abortion struggle, to be fought most effectively, must be inextricably linked not only with the women's liberation movement, but with the struggle for socialism. Bearing this in mind, it is clear that pragmatically based struggles for reforms to be brought about by parliament within the present economic and social order, e.g., NAC, Wages for Housework, Women Against Rape, cannot ever be totally effective.

Only a socialist society could afford to emancipate women to the extent that their fertility is totally controllable, with easily available contraception, and free abortion on demand for those for whom contraception fails. At best parliament can only introduce reforms within the present social context, e.g., the Equal Pay Act, the '67 Abortion Act; and against powerful vested interests, cannot even insure that these are applied effectively. At worst, in periods of crisis it becomes the vehicle of a vicious onslaught on every aspect of women's lives. Women again become the child-ridden housemaids of capitalism!

The real struggles in our society are carried on in the outside world, far from the façade of parliamentary democracy. As with other oppressed groups in society, women can only triumph over their oppression by fighting alongside revolutionary groups, to overthrow the capitalist system within which the roots of their oppression lie. The campaign for easy abortion must be part of this struggle.

### Liz Baltiesz is a member of LSE IS Society

P.S.—With the above aims in mind I'd like to contact those interested in forming a Women's Voice group at LSE, either at NOISS meetings or through the U/G pigeon holes.

### CASH!

SO you need some money as well as Beaver. Since 1970, Publications has declined from 14% of the Union budget to 5% and for Beaver the decline is higher. This year again Julian (the Axeman cometh) Ingram has attacked our budget. Two out of a total of eleven issues have already gone.

However, a way has been discovered which enriches both Beaver and you, the penniless student—it's called advertising. You receive 10% of the value of all adverts you get for Beaver (a full page costs £100).

Our rates are competitive and we can supply you with a telephone and prospective clients. All we need are people who are prepared to spend the time.

Interested? Then come along to the Beaver Lodge (S116) just past Florries extension.

### HARDSHIP FUNDS

THE Union has three funds to help students and all applications are treated in the strictest confidence. They are basically administered by the Senior Treasurer, with the Welfare Officer and the Senior Administrative Officer providing advice. Application forms are available from the Union Office, and arrangements will be made for an interview.

The largest fund is the Hardship Fund (£6,000 provisional) and it exists to help poor foreign and self-financing students pay their admission fees to the School. There is also a School Hardship Fund (£75,000) for continuing students.

The Union Fee Rebate Scheme (£1,000) is to help both domestic and foreign students who are privately financed to pay the Students' Union fee.

The Pregnancy Fund (£360) is designed to help LSE students who become pregnant to have a "real choice".

ANOTHER Beaver exclusive! We have discovered in the depths of our dustbins, some interesting material from LSE "Entertainments Committee" minute book (1921-24), some extracts of which we print below:

★ ★ ★

"The secretary reported that the School secretary had given permission for dancing to continue until 11 p.m. The Committee suggested that this hour should be extended, if possible, to 12 (midnight)"!

★ ★ ★

"The dance showed a gross loss of £1 14/6 but this included the cost of one dozen bottles of lemon squash, 10 bottles of which were unused. The net loss was thus about 17/- only.

There are five additional bottles of lemon squash in hand."

★ ★ ★

"With regard to the Garden Party for June 24th:

1. Provision of coconut shies, skittles, Aunt Sally and Quoits.
2. Alternatively, the formation of a School open-air Pierrot troupe.
3. Or, the arrangement for the hiring of a gypsy fair."

BEAVER is an odd paper in that the publication's collective does not write the paper, merely produces it. The copy generally arrives from outside and this is one reason why we see no role for a letters page. While there are some articles and adverts we are not prepared to print (e.g. those from the NF), the content is your content, we do not necessarily agree with it and we see little reason why we should be attacked for the opinions of others.

CAROL AND PEACOCK

## Student paper distribution scheme

**WHEN we (Carol and PEACOCK) took over as Editors last academic year we decided to bring a different approach to the job. One of our new schemes was the Student Paper Distribution Scheme.**

In the past a few of the wealthier colleges had occasionally sent out some copies of an issue. In our scheme the colleges send a single bundle of an issue to us and we return them a bundle composed of a copy of all the other college newspapers in the scheme.

The result is that the colleges find it far simpler to distribute their paper and there is a reduction in total postage costs.

Communications between colleges are negligible, NUS's Main Mail is never read (had you heard of it?), and this scheme attempts to try and bridge a little of the gap between colleges. A round-up of the news in other colleges will, we hope, draw students together more.

This scheme is just a small example of what can be done and with a regular system of mailings we hope it grows from being just a student paper distribution scheme.

At present our system only covers the London colleges of which ten are involved. There is a financial motion before the Union to give the Scheme £30. We hope you will support it because it will enable us to expand to the national level. As a news service the scheme may be on a very low level but we hope it does something to enable students to see their common problems.

PEACOCK.

# LSE UNDERGROUND

(Basement St Clements)

**SHELTER FROM OCCUPIED LECTURE ROOMS!**

**ENJOY A FURTIVE PINT WITH FELLOW RESISTANCE MEMBERS!**

**AT BLACK MARKET PRICES**

**YOUNGER'S AND SMITH'S REAL ALE  
A VARIED SELECTION OF BOTTLED BEERS**

**HOT AND COLD SNACKS**

**BAR GAMES TO PLAY**

# THE THREE TUNS

(OPEN: 12-2.30 and 5-late)

# L.S.E. FILE

**START** — This is where you are now.

1 Shout sexist in Union Meeting. Advance 1

2

3 Read Trotsky's entire works — Advance 1

Smash the Establishment with 'Whizzo' Bricks!

4 Miss one go while reading them

19

20 Mislaid Party line — forward 1

21

17 Find Forgotten Part of Constitution — Forward 1

Fight for the Right to Vomit

22 Picket your own Branch of Barclays — Advance 3

National Front is a Wimpey Brunch. Copyright 1st floor bog.

5 Get Barclays Bank advert for Beaver — Back 2

6 Join Consoc — Go back to Go

18 Discover Smirnoff — miss a go

23 Wear a suit on a grants demo — naughty — back 1

7 Confess that you're a CIA plant — Advance 3

16 Attend Lecture — Back 1

Ours is not to reason why — Ours is just to print and die.

24 What about your degree? Leave game

Don't be a Jubilee Mug!

8 Write an Opera Review for Beaver — Back 1

15 Admit your parents aren't working class — Back 6

**FINISH.** Become a Sabbatical and realise it wasn't worth it.

9 Join Broad Left — Advance 1

14 Become an Anarchist — Leave Game

13 Challenge Union Chairperson — Advance 1

12 Confess you can't spell privilege — Advance 1

11

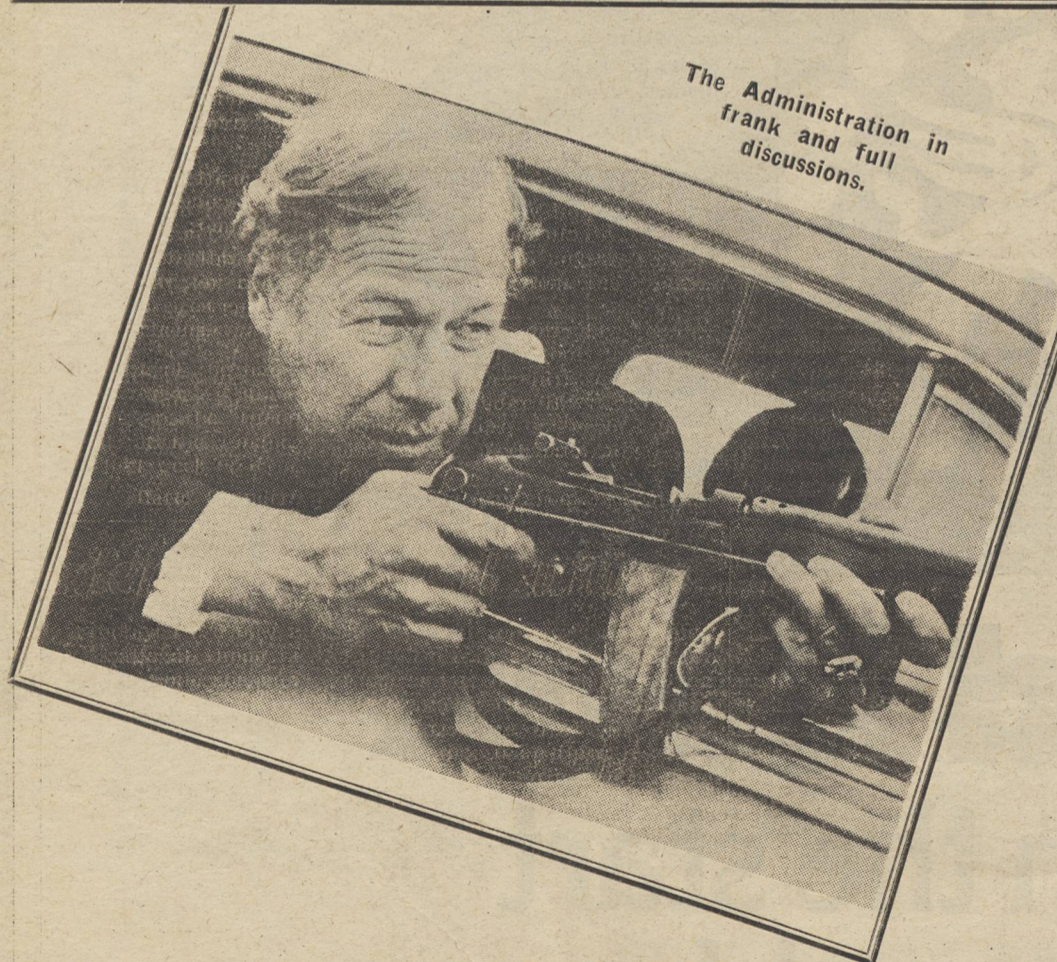
10 Realise Broad Left were wrong — Advance 3



"Quiet, or they'll put us into the L.S.E. File as filers."

## YOUR PATH TO UNION SUCCESS

The Administration in frank and full discussions.



## CONTENT

Page

- i—Your Path to Union Success
- ii—Interview with the Director.  
Map of the Union Building
- iv—The Organisation of the Union
- v—Union versus the Administration
- vi—The Executive
- vii—Welfare
- viii—Entertainments
- x—Communications  
External Affairs
- xi—Athletics Union
- xiii—Political Groups
- xv—Action Groups
- xvi—Societies  
Student Organisation

# Free banking

If you're a full-time student living on a grant we'll run a current account for you free of charges.

And it'll stay free for as long as you're a student if you conduct it normally and maintain it in credit.

So when you open your Midland Bank account make sure you say you're a student.



## Midland Bank

Right from the start  
we make a great team.

# CONFESSIONS

## of an LSE director

THIS is a shortened version of an interview between Professor Ralph Dahrendorf, Director of LSE and Peacock, one of Beaver's Editors, which took place this August.

**P:** What do you see as your role as the Director?

**D:** The role of the Director changes with conditions. First of all in many respects the Director is a fleeting being rather than in any sense the man who runs the School. Secondly, I think one of the very important roles of the Director is that he is not a member of any particular group in the School and in that sense, outside all of them, and I think any institution probably needs somebody who is available for all of them. Thirdly, the Director has to look after the boundary between the School and the outside world and see that the School is known and recognised for what it is.

**P:** You disagree, then with the Student Action Alliance Journal which claimed: "That however sympathetic Dahrendorf once appeared to be he is in essence the administrative agent of the Court (of Governors) and of the State".

**D:** Well, yes, of course I disagree with that. I understand the intellectual helplessness of those who cannot conceive of the world without identifying a clear seat of power in institutions.

The plain fact is that the state exercises no direct influence on the actual life of Universities in Britain, apart from, the fact that the money which we spend in Univer-

sities is taxpayers' money. So far as the Court of Governors is concerned, L.S.E. like other academic institutions and many other institutions has, and I think fortunately has, a body of people who are not involved in the day to day work of the School, but who serve as a sounding board for many things and who have to take some decisions, not very many. I'm quite pleased about their existence, I think they would be very amused if they were told that I was their agent.

**P:** This leads quite naturally on to the question of the occupation. Looking back would you follow the same course of action?

**D:** There was, in the early phases of the occupation not even any stated reason for it; no negotiations had broken down, no problem had arisen which couldn't be resolved in the School, and in the later phases of the occupation those who led it stated conditions which I thought were unacceptable. Many people were put out of work by the students, there was a very real danger of this leading to even graver financial consequences. Much as I resented it I had to ask the Court to state who had the lawful right to work and be in these offices, and the Court naturally stated that it was the employees of the School. If you ask me whether I would do it again my obvious answer is: I might, but you cannot really run a University in this way.

**P:** Your argument was that this was the work place of some people; would you consider the lecture

theatres the work place of the students?

**D:** Yes.

**P:** Say if they occupied them . . . ?

**D:** . . . look, it's always difficult to discuss this in theory, I think on occupation especially if there is no issue between the students and the School in any case, a disruption of life which one has to think about very carefully, but I would certainly distinguish very carefully between acts in different parts of the School, and I have done so.



**P:** Leading on to the question of fees. Last year's students were issued admissions cards on arrival and this year they are being issued after students have paid their fees. The Administration claims that regulations have not been changed, yet the students know this is not so. How would you comment on that?

**D:** Regulations have not been changed, this matter has been discussed with the General Secretary (Ed: Wanda Goldwag denies this) and the Senior Treasurer of the last Students' Union, and I think we have dealt with it in a satisfactory way: no student will be treated harshly over this wretched matter of fees I can assure you of that, and we'll do our level best to make sure that a decision for which we are not responsible, does not add insult to injury, as it were.

**P:** What will be the effect of the fees in terms of numbers in your opinion?

**D:** I fear that many of those, who have been admitted to the School will find it difficult to take up their courses and I should not be surprised if several dozen decide not to take them up. That is likely to be the consequence of an unreasonable fees structure. I find it hard to give a more precise figure.

**P:** Coming to the question of School Committees: when we accepted the offer of places on some of the School Committees last year, the feeling was that this was not a very good offer, but by accepting it the position could possibly be improved, and this is now being questioned. The power of Committees that we have places on has now shifted away, and there is a feeling that we should withdraw from School Committees—what advantage do you see if we continue on Committees?

**D:** It's quite typical that students on Committees feel that the power must be elsewhere because it's not where they are, but it's also quite absurd, because the power is not elsewhere. The Court of Governors, and the General Purposes Committee, are two extremely important Committees. I would argue that the organised meeting be-

tween student Governors and members of the Standing Committee of the Court, has a lot to do with decisions which are taken in the School, and I would further argue that the attitude of students when the offer was taken up made a lot of sense. Now you can't expect a change in the arrangements which we have begun to use in the last academic year, within a year. In short, I would profoundly regret it if students decided to leave Committees again. The School could work without students on Committees as it worked without students on Committees for 82 years, but I think you underestimate the difference which membership in Committees has already made to these Committees and to the School in general.

**P:** Take for example the G.P.C. which hasn't made a single recommendation since students entered it.

**D:** The G.P.C. has been in a difficult position because it has had to discuss the fee question and I would argue that the G.P.C. has made one of the most important single recommendations, the one about fees.

**P:** If it was suggested that information had been leaked from the Student Health Service—unknown to them—to the Administration—what would you say?

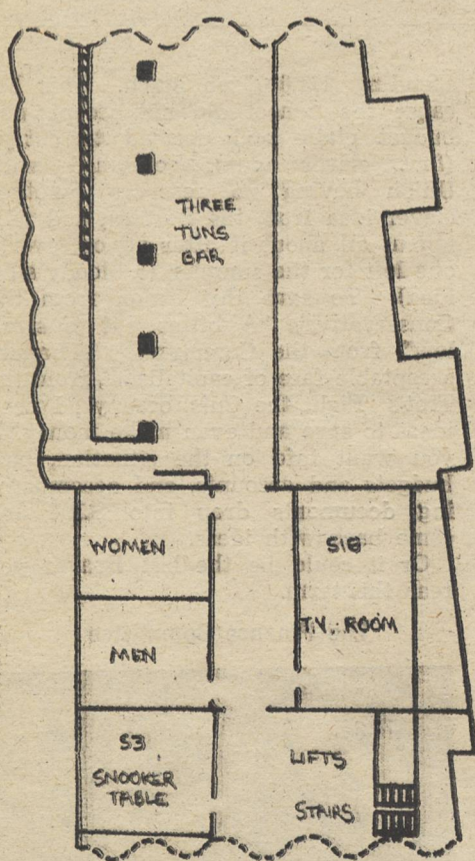
**D:** I hope it won't happen.

**P:** If it has, possibly, what would you do?

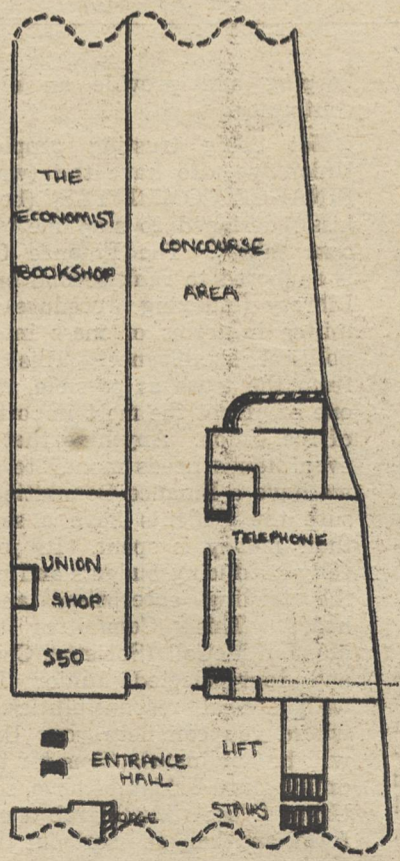
**D:** Well, I've looked very carefully at this and feel extremely strongly that personal matters concerning students, have absolutely nothing to do with me, or with the academic concerns of the School. I would see to it, that the line between these two areas is drawn extremely carefully. If I was given a particular case I would certainly see to it, that whoever is responsible, is told quite clearly what the rules of the School are.

**Professor Dahrendorf on Fascism and the nursery—see page 8.**

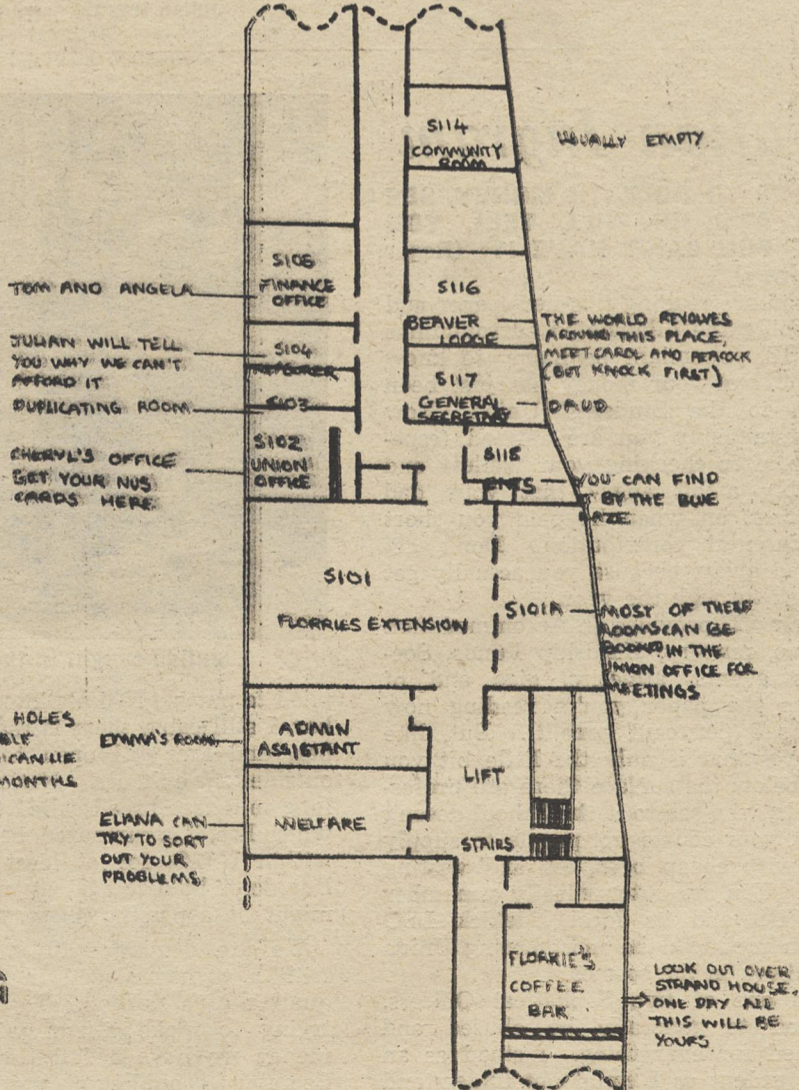
### BASEMENT



### GROUND FLOOR



### FIRST FLOOR



ST. CLEMENTS BUILDING

# S.U. ORGANISATION

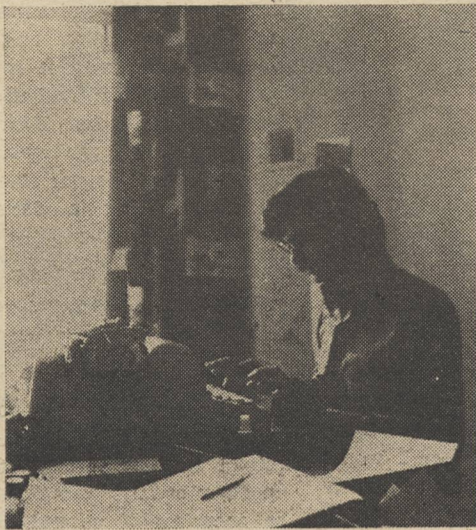
## Daud Kahn

AS General Secretary of the S.U., I welcome you to L.S.E.

It is not the best of times to find yourself a student as the Education sector along with other public service sectors is finding itself under severe attack. Tuition Fees are rising, the real value of grants falling, Hall fees spiralling, the School cannot replace retiring Academic staff, even the Students' Union must cut back its expenditure.

The importance of a unified student body cannot be overstressed. We must make it clear that we will not allow the cuts to take place.

But we must understand why the situation is as it is. In the 50s and 60s there was a period of rapid industrial and technological expansion, and education was expanding to serve the needs of industry. New Universities and



Daud: Summer '77

Polytechnics mushroomed. There was also expansion in sociology, psychology and the other social sciences, sociology was prominent in business studies and managements courses. This provided a

section of professionals, intellectuals, and managers so trained to provide endless justification for the contradictions which existed in Capitalist society. Why for example in spite of the great boom, poverty, as defined as the number of people below the National Assistance/Supplementary Benefit scale, rose from 0.6 million in 1953-4 to 2 million in 1969, (Family Expenditure Survey—Study by Abel-Smith and Townsend and Atkinson).

By the early 1970s the period of expansion had ended. British monopoly capitalism was well into a crisis of over-production, a situation which the boom of the 60s was bound to lead to. As profits begin to drop the state is forced to redirect its investment into more profitable channels in order to maintain "incentives to industry". This is what has led to "depression", unemployment and the Government "Cuts".

A successful attempt has also been made to get workers to stop wage in-

creases while inflation is eating away their standard of living. All this is done under the guise of the argument "we must all take a fair share of the cuts", or "there just isn't enough money around". However, it is a matter of simple arithmetic that when prices rise and when real wages fall (due to both cuts in social services and to convincing workers to hold down wages) that profits are rising, and this is the "incentive to invest" without which Britain is "doomed". Banks and other big business made record profits, a typical case is of Lloyds Banks who had a 55 per cent increase in profits over the previous year making an all time record profit of £147 million.

In opposing the cuts we are opposing this method of "putting Britain back on its feet". The money is there and workers and students must refuse to take cuts in order to raise profit rates so that the industrialists will find it a "good proposition to invest".

## Constitution Committee

THE Constitution Committee is the watchdog to make sure that our Constitution and Standing Orders are not abused.

However boring this might seem, the protection of a pile of uncollated, dusty, duplicated sheets in the Union Office is a vital prerequisite of an organisation such as this.

The Constitution Committee has over the years prevented many blows being exchanged by Union floor through its calm collected judgments (usually 7 days too late).

However, members of this esteemed but abused Committee are undaunted in their pursuit of the ultimate Constitution, and will constantly bore you with long reports even they don't understand.

They have one tactical advantage—they own the only up-to-date copies of the Constitution (crafty eh). Any hack in possession of a copy can do the following:—

- Embarrass the Chairperson;
- Embarrass the Constitution Committee members;
- Catch the Constitution Committee out.

These games cause great humour to a select few and even greater boredom to the majority.

Last year there was a backlash when an anarchist was elected as Deputy Chairperson on a platform close to smashing the Constitution Committee (and the Constitution).

This might strike you as rather facile, it does me, but the Committee members might be hurt by this type of statement so let's be brave and thank them all for ruining all the carefully designed Trot and Conservative plans last year and all the Senior Treasurer's complaints they upheld despite bribes, kickbacks and threats. And let's hope it continues the good work.

Julian Ingram

## Administration Staff

PERMANENT SECRETARY — Cheryl Younson:

CHERYL works in the S.U. Office, S.102. She really needs two pairs of hands because she is receptionist and telephonist for the Students' Union, and does all the correspondence for the two Sabbaticals and Executive Officers. Cheryl also does some administrative work for the A.U. The Union Office opens each weekday from 10.30-1.00 and 2.30-4.30. All the duplicated material from the Students' Union is typed by Cheryl.

After the beginning of term N.U.S. cards, information on British Rail cards and some travel information is available from the Union Office.

Room Bookings (that is to say, when a Society needs a room in the School for a meeting) are handled exclusively by Cheryl, and this includes any special requirements.

SENIOR ADMINISTRATIVE OFFICER—Emma Hamilton-Brown, Room S.100a.

YOU will probably meet Emma

during New Students' Week as she is particularly concerned with new students.

Emma is known by existing students here as a mine of information. She deals with initial queries regarding academic problems, eg changing courses/tutors and with financial problems, eg non-receipt of grants. She can give you information on how to apply for financial assistance from the S.U., the School and outside bodies. Emma is on the School's Committee for the Welfare of Overseas Students and plays a part in the administration of the Students' Union Hardship Fund (for British and Overseas Students).

Emma will help you to find your way through the bureaucracy of the Union, eg how to set up a new Union Society.

She has, in her office, a vast range of information right from the year dot, all available to students. She also takes minutes at all



Emma and Cheryl

Union and Executive Committee meetings. She is also minute taker/ advisor at meetings between the S.U. and the Director and the Court of Governors.

Emma's six years' experience around the Union provides vital continuity and would emphasise that the Union is run by you and for you and not just those who are politically orientated but can only help if you come into the Union—even just for a chat and a cup of tea.

Emma Hamilton-Brown

## Julian Ingram

"IF IT'S TO DO WITH MONEY, SEE HIM, AND HE WILL TELL YOU WHY YOU CAN'T HAVE IT" (Roger Galloway)

AS you are reading this newspaper and absorbing the dilapidated surroundings of LSE, you might be happy to know that £27 of your money has just been given to the Students' Union. Now understandably you are amazed (especially after checking your wallet) and possibly a bit angry that your dad didn't let on when he paid you short on parental contribution. Don't get carried away, because you actually get it back through the year.

Your £27 provides an Accommodation service, nursery, Hardship Funds, Societies events, athletics, gigs and of course the paper you're reading now (that's 5 per cent gone!!!). But, like icebergs that is only the little bit you see, below the surface there are professionals, who see to it the School doesn't muck your course up, people to supply you with cheap beer, tea and writing pads. You are automatically a member of NUS and its local sidekick LSO which produces the most boring Union handbook in the cosmos.

I'm one of two Sabbatical Officers, elected to generally be abused and blamed for everything. I stood as an independent as I could not understand how the Marxist theory of capital ap-



Julian caught in the act.

plied to putting real ale into the student bar, I still can't, there is real ale in the bar, and I'm still open to persuasion outside office hours. Nationally I belong to a rare breed called the Liberals which has, it is rumoured, been deceased within N.U.S. for at least two years. But don't hold it against me as it just might be a passing phase.

We are dealing with an institution with a turnover well in excess of a quarter of a million. To stop anyone trying to make a run with all this money we have a full time Financial Secretary (Tom Bruin) and his assistant (Angela Craig) who do all the book-

keeping and provide an element of continuity.

Not being trusting people in the Union we also have the (wait for it) FINANCE COMMITTEE, (boring, boo, hiss), designed to stop me "doing my own thing". The Finance Committee is supposed to rank second only to the Library (indexing procedure) sub-Committee in terms of mass interest and political significance. This is as far from the truth as possible, really it is one of, if not the most important organ of the Union. Anything that moves or even stands needs money to do it, and we have a Finance Committee to make sure the students have a say in how their money is spent. Its job is basically producing budgets and monitoring the trading enterprises and budget heads. This Committee comprises Me, Jon McColl (Societies Chairperson) and four elected Junior Treasurers, with special responsibilities. This is where you can help your Union. We will be holding elections for these posts on the third Friday of term, so go to the Union Office (S.102) grab a nomination form, and help me sort out the current crisis.

We are not as badly off as two years ago when we faced bankruptcy, so don't panic. However, on present estimates we are going to spend up to £16,000 more than we have got. Depending on how many students arrive this week, if the School is right (which is not often but miracles can happen) we will be

spending £11,000 too much. This because the School did not accept our budget claim and decided to cut it (first clever idea), combined with Union having no reserves (another clever idea from the School), and telling us all about it after almost everyone left for the summer (a bloody silly idea). To save this Union from the Conservative's "A bitter pill to swallow", from the Communist's "The unacceptable face of capitalism", from the Trot's "Fight the Cuts, occupy", I need ideas to save and even make money. If you want info on the situation, past budgets and accounts, and accompanying documents drop into S.104 and come back with ideas.

Or it could be the last Beaver you read this term.

The Finance Committee



# UNION v SCHOOL

## Union meetings

ORDINARY Union Meetings are held in the Old Theatre at 3.00 pm every Friday afternoon. They are open to everyone as members of the Students' Union at LSE, and almost all of you will find that you have no lecture or class commitments at this time—although it has been a long-standing bugbear of the Union that this is not so for everyone.

According to the (mythical) Constitution "Union Meetings are the Sovereign body of the Union" which is to say that supposedly all the final decision making within the Union takes place here. You will find the Union referred to as the "Sovereign body" very frequently, but like all oft-quoted phrases you will soon discover like the rest of us that it is not strictly true. In reality the effective power in the Union lies in other directions—notably in the Finance Committee. Strangely enough, however, despite the self-evident power of this committee there seems to be more prestige attached to being on the Executive Committee.

Nevertheless, if you enjoy taking part in high-powered political debate (sic!) or if you get a kick out of mandating the Executive to go on non-existent pickets, you have to go along to UGMs to do so. Union meetings can be all things to all people. Above all, if you don't go to Union meetings you will find that you lose touch with what is going on around you—even Beaver can only print what is news around LSE at the time of its going to press.

UGMs are presided over by a Chairperson who is elected every term but usually remains in office for a year. This is a job for masochists and it's surprising how many of them we seem to have at LSE. The official minutes are recorded by either Cheryl or Emma.

Agendas are available from Cheryl's office (S.102) on Thursdays. If you wish to propose a motion yourself it should be handed in to Daud Khan in S.117, before Wednesday midday. It should state who is the proposer and seconder of the motion and usually has two sections—under "Union notes" a list of relevant points about your cause and under "Union resolves" what action you wish to be taken and by whom.

## LSE committees

IN 1968/9 the School offered students participation in certain School committees, however, these representatives, elected by direct elections, would not be bound by Union Policy, nor could the Union dismiss them, in no Committee was anything approaching parity offered nor would we be represented on any important Committees; for example, the Academic Board, the Standing Committee of the Court of Governors, the Academic Policy Committee etc.

The Union felt that accepting these places would not change the School's decision-making process, indeed participation would harm the student cause for the School could say that the student body had been consulted.

However, last year the Union decided to accept the 1968/69 offer. By the end of the 2nd term we had taken places in the committees concerned. But previous fears have been found to have been justified.

Tuition Fees were the major issue this year and the School decided to implement the Government proposals and it set up an inadequate hardship fund. The decision was made in three Committees, the GPC (the General Purposes Committee) in its last

meeting without student members, the Academic Board and the Standing Committee of the Board of Governors, both without student members. Yet since students joined the GPC no recommendations have been made at all.

Next was the decision on the exam system, the Academic Studies Sub-Committee recommended to the Academic Policy Committee a rule requiring 75 per cent of every degree course to be examined by 3-hour written exams. This recommendation was rejected by the Committee of Undergraduate studies. It was then discussed at a meeting of the Staff/Student Committee of the Sociology Department, and students made clear their objections. Union Policy is that students should have a wide choice of exam methods. The recommendation means forcing the Sociology Department to change from allowing students to write extended essays and to enforce 3-hour written exams instead.

Nevertheless the Convenor of the Sociology Department reported that reaction to the recommendation was favourable. The matter went on to the Academic Policy Committee and the Academic Board where we have no participation. Two sociology course units are now by 3-hour examination not by essay. Students were not even informed of these changes until a later date.

The Director has said that he agreed with the view that decision making on Academic standards should be in the hands of the academic staff. He knew of Universities in Europe where academic standards had been undermined by student participation.

The School still makes decisions without serious attempt to consult us and changes have been made in the registration of Undergraduate students. Admission cards used to be issued on arrival at the School, but in response to the threat of a fees strike, the regulations are now different. Registration will not be granted until a student pays his fees. **The School says that regulations have not been changed**, a statement which any students who had been here last year will know is just not true.

We have sat on School Committees for about a term and a half, the experience justifies the position of those who felt that taking up the kind of representation offered by them was wrong. We should review our position this year and personally I believe we should revert to our pre-1976 position when we had nothing to do with this kind of sham representation.

Daud Kahn  
(General Secretary)



Union meetings have never been the same since the I.S. took over . . .

The Quorum for UGMs is 150 people. Although meetings are frequently inquorate this is not recognised unless someone shouts "Quorum", when a count is taken. If a meeting is officially recognised as being inquorate it is disbanded. This usually happens when a controversial motion is about to be discussed and the Tories can see they are outnumbered by the Left.

The start of a UGM is devoted to re-

ports from officers of the Union (Committee members and Sabbaticals) and also to questions to officers (usually pointless but amusing).

A motion is proposed and seconded by two speakers and opposers come from the floor. The debate is passed from those in favour to those against with questions and added information coming from the floor, until

there is a request for a "procedural move to the vote".

If you are a new student this article will not explain all that you probably want to know, but hopefully it will give you some guide as to what is going on when (and hopefully, if) you attend your first UGM.

Carol Saunders  
(co-editor of Beaver)

## The Court of Governors

THE L.S.E. is a limited company and the members of the Court of Governors are both the "directors" and "members" of this company. The Court consists of about 100 members, five nominated by ILEA, three by the Senate of the University of London, three by the L.S.E. Society, seven by the Academic Board and six student Governors elected directly by the students. The Court of Governors is the School's supreme governing body and is responsible for what happens in the School. Most of the Governors are representatives of big business, industrialists, heads of financial empires and members or ex-members of the Government.

The Court meets once a month during

term time and occasionally during vacations. It deals with financial matters, and creation or discontinuance of full-time teaching or administrative posts, but its authority extends over most matters. There are about seven Assistant Committees.

The Director as Secretary of the Court has delegated authority to run the School. He too has Committees to help him.

Power in the School is, however, concentrated in a few hands and the supreme Governing body has an obvious class interest.

Daud Kahn  
(General Secretary)

# THE OCCUPATION

ONE way we are feeling cuts is through the rising fees. They have risen consistently since 1967. The latest increases were announced last December. Students greeted this with a wave of protest.

Pressure was put on appropriate authorities not to implement Government proposals. L.S.E. students played a significant campaigning role, and though we failed to get our "sympathetic" Director to make a stand, we have learnt a lot to help us mount an effective campaign this year.

The Overseas Students Action Committee started things moving early on. There was publicity about the issue, public meetings held, and the Director approached through delegations, but he fobbed them off with platitudes.

Around February students felt they had had enough sympathy from the School. OSAC called for an occupation which was endorsed by the SU. The occupation was supported by an overwhelming number of students. Pressurised, the School tried various methods to split students, legal action was threatened, a useless negotiating committee was produced as some magic solution. Opportunists then appeared among us, so-called leaders wanted to call



off the occupation and take up the Director's offer of a negotiating committee.

However, the mass of students were undeterred. Next the Director resorted to force, we were taken to Court and finally 600 policemen came into Connaught House to evict us.

The occupation taught us many things. We learned about the decision-making process in the School, the role of the media, we saw political parties in action and recognised the opportunists, we saw the "sympathy" we are shown only if we don't retaliate. Above all we learnt that the Director's and School's authority rests on force, the 600 policemen called in by the Director in his capacity as "owner" of the School's premises.

These lessons have equipped us for this year's campaign and we have developed a new tactic to use—the fees strike. Withholding fees puts financial pressure on the School and makes political sense—if you are against the imposition of fees, stop paying them! Convinced of the justice of our cause we are convinced of victory.

Daud Kahn (General Secretary)

# The Executive

**THE Executive Committee of the Students' Union is theoretically designed to make recommendations to and implement the decisions of the Students' Union via the UGMs.**

In effect, although Exec members are supposed to represent various areas of Union life, being on the Executive seems often to be an end in itself and Exec members often have little or nothing to do with the group of people they are supposed to stand for.

The Executive is elected once a year on the eighth week of the Lent term and takes office on the first day of the Summer term. In fact, there are always resignations during the year and therefore there are mid-year elections, for various specific posts.

This year's Executive Committee was decided as follows:

**Ents and Bar:** MAX POORE (Independent Loony, Socialist?)

**Overseas Students:** CHRISTOS SLAVOUNIS (Greek Communist Party)

**Publications:** ROGER GALLOWAY (International Socialists)

**External Affairs:** DAVE FIG (Student Action Alliance)

**Academic Affairs:** SHARON SER (Labour Party).

**Societies:** JOHN McCOLL (Broad Left/Labour Party).

**Welfare:** MARGOT JAMES (Federation of Conservative Students).

**Postgraduates:** PETE BAINS (Student Action Alliance).

**Shop and Florries:** ABHAY DESAI (Independent).

**Athletic Union:** NICK WHITE (Monday Club).

As well as these members, both of the Sabbaticals, Julian Ingram (Liberal) and Daud Khan (Student Action Alliance) are automatically members of the Exec. The Sabbaticals are full-time officials of the Union and are paid by the Union at the same rates as undergraduate students but their pay includes all the holidays and tax is also taken into account.

Sabbaticals are elected at the end of the Lent term and are in office from the beginning of the Summer vacation. Most Sabbaticals are second-year students who suspend their studies for a year, occasionally third-year students are Sabbaticals, however.

CAROL SAUNDERS (Co-Editor).



Overseas  
Students

## Societies Chairperson

THE Students' Union has a considerable number of Societies of varying types, most of these get a grant from the Students' Union (Religious and Political Societies do not). One of the 12 posts on the Executive is that of Societies Chairperson.

This involves, apart from the usual responsibilities of an Executive member, sitting on the Finance Committee and the Societies Committee. My main responsibility on the former Committee is to ensure that Societies submit their budget and accounts so that they can be monitored by the Union Officers.

The Societies Committee is an open Committee of Union. Its main responsibilities are to maintain a link between Societies and the Executive and to keep individual Societies in contact with events and campaigns coming up.

Jon McGill

### Question to our favourite Director:

"If a decision taken by some 600 students is a 'primitive method of minority rule', please tell me who the hell elected you???"

## Dahrendorf's confessions continued

**P:** Is there any possibility of index linking the five thousand pound grant that is given to the School Nursery to inflation? I believe it has remained the same for a number of years.

**D:** The answer to that is yes; obviously we want the Nursery to continue. I think it's come to be a surprisingly decent nursery.

**P:** This suggestion has already been made in fact. Will you be following it up?

**D:** Well, certainly this is a suggestion which should be followed up.

**P:** This country is seeing the rise of fascism. Some people feel that the only way of fighting this is trying to smash them in the streets. What do you say to this?

**D:** Well, you are asking somebody who has obviously thought quite a lot about it and the first thing I would say is that today the conditions exist, which, I'm afraid, make for the rise of an authoritarianism or totalitarianism of the right with anti-democratic and violent connotations. These conditions include: unemployment, sinking real incomes, believed or real concern with so-called law and order, and the inability of many people to come to grips with differences between people. I've never liked the word race because it seems to indicate a sort of natural difference which in my view does not exist. Yes, we're beginning to see the readiness of people to vote for groups which I too regard as totally outside the consensus of democratic politics. The question of how you deal with this depends on your assessment, of the seriousness of this movement, and I would say quite clearly, in Germany, I would declare such movements illegal, and I would regret it but I would not feel ashamed to do it. In Britain, if you believe that there is a serious threat, then I think the answer too is to declare it illegal. I don't believe that at this point such a serious threat exists.

I'm bound to say that I abhor violence to such an extent, and I believe so strongly that violence breeds more violence, that I find it impossible to advocate street fighting, as an answer. I don't think it will answer anything, and in a sense it might have the opposite result. I would find it eminently sensible to have thousands and tens of thousands, and if possible hundreds of thousands, meet in another place and state quite clearly what they believe in.

Professor Dahrendorf invites your replies.

# We'll enrobe your academic body

*You couldn't be in more experienced hands next Degree Day. Ede and Ravenscroft—that's us—the world's longest established firm of academic robe makers. We beat the Bank of England by five years. We hold a Royal Warrant from H.M. the Queen just as we held one from each of the last twelve reigning monarchs who preceded Her.*

We are official suppliers of ceremonial academic wear to hundreds of centres of learning (including yours) in Britain and all round the world.

Several weeks before the date of your graduation ceremony you will receive our order form, with prices, for purchase or hire. Please note that, if you decide to buy new robes after you have already paid your hire payment, the latter amount will be deducted from the purchase price. In other words, the hired robes worn by you on your Degree Day won't cost you a penny if you subsequently decided to buy new ones within ten weeks.

EDE AND RAVENSCROFT LIMITED, 93-94 CHANCERY LANE, LONDON WC2. Telephone 01-405 3906

## Ede and Ravenscroft

LIMITED

Established 1689



# WELFARE

—Help and advice . . .

## Who does what

### WELFARE OFFICER

Elana Ehrlich was employed as the Students' Union Welfare Officer in 1975. She came with experience of the academic world and student counselling. In her own words she claims "there's no 'magic' in helping students, except quite often to acknowledge the wide range of practical and emotional difficulties which beset individuals and groups of students. Often these problems are made worse by people just simply not knowing where to present them." When not at various Committee meetings representing Student Welfare needs, Elana can be found in Room S.100.



**ELANA EHRLICH :**

The person to see if you have problems

and implement Welfare Services. These have included outings and volunteer work. If interested, please stand as a candidate for the Welfare Committee at the first Union Meeting. Volunteers are also always welcome.

### WELFARE COMMITTEE

The Welfare Committee consists of elected students from Union Meetings who provide additional ideas and people-power to expand

## The services provided

**ACCOMMODATION:** One of the most traumatic first experiences of attending the L.S.E. involves facing the real lack of centrally located and inexpensive housing. The Welfare Officer warns people to persevere and receives some offers through advertising in newspapers. Other valuable sources are: The University of London Accommodation Office; Other students; Local and Evening Newspapers.

Applications for Halls of Residence and School Flats are dealt with by the Registry and then through Wardens of individual Halls.

**OVERSEAS STUDENTS:** Overseas students face more practical and emotional problems than native students, and are a special responsibility of the Welfare Office. Again, information and advice on immigration, work permits and visas is available. The Welfare Office puts overseas students in touch with social clubs as well as organisations offering financial help. The Women's Corona Society at Murray House, Vandon Street, London, SW1 (222-2251) offer seminars on "Living in London" for wives of overseas students in October. They and the British Council Students Centre, 11 Portland Place, London, W1N 4EJ (636-6888), arrange visits throughout the year. The Overseas Students' Action Committee, established in 1976, campaigns actively on the issue of rising tuition fees. There is also a Students' Union Hardship Fund for overseas and self financing students.

**FINANCE:** Information is available on the financial problems of grants, scholarships, vacation grants, increases in fees to overseas students, rent rebates and how to claim Social Security during vacations.

**VACATION WORK:** Students may apply to the SU Welfare Office, the NUS Vacation Work Office (3 Endsleigh Street, WC1, 387-1277, Lucy Brownlea) and the L.S.E. Career Advisory Service on the first floor of Bank Chambers.

**COUNSELLING:** Other areas of the Welfare Officer's work are the personal and emotional—whether it be exam anxiety, communication problems with your Department, depression, contraception, relationship difficulties, or just finding expectations of yourself, the L.S.E. or London too great, the Welfare Officer will try to help. You can make an appointment to see her or consider the group chats held once a week with

Elana Ehrlich and Penny Rockley (the School Nurse).

**BLIND STUDENTS:** The School has a small intake of blind and partially sighted students and provides tape-recorders for these students. The Library operates a system of short term loans of books and xeroxed copies of journals. The Welfare Office co-operates with the School in organising a rota of readers when these students finalise their timetables. Anybody who would like to be involved in doing this work should volunteer at the Welfare Office. Most people feel that they are not only appreciated, but benefit themselves from the experience.

**COMMUNITY ROOM:** S.114 is a community room where you can sit, read and chat. Visiting speakers will give talks in S.114 on drugs and the Law, Legal Rights on demonstrations, Contraception and Abortion services, squatting and social security benefits. Please come along and make this room justify its name.

**STUDENT HEALTH SERVICE:** The Student Health Service aims to provide comprehensive and confidential medical care for all students of the School. The Health Service (8th Floor, Connaught House) provides facilities for general medical, psychiatric, gynaecological, dental and first aid treatment. Students residing within a specified area of North London can register with the General Practitioner as an NHS patient, although students registered elsewhere may consult the doctor too.

### CONTRACEPTION

**FAMILY PLANNING ASSOCIATION,** —636-7866, 27 Mortimer Street, W1.

The Family Planning Association HQ gives numbers and addresses of all FPA Clinics.

**MARGARET PYKE CENTRE**—580-3077, 27 Mortimer Street, W1. Deals with contraception/contraceptive advice for all. They also have a psycho-sexual clinic.

**BROOK ADVISORY CENTRE**—580-2991, 233 Tottenham Court Road, W1. Specially for the unmarried under 25s—they also see married and over 25s.

**ABORTION ADVICE CENTRES**  
**THE PREGNANCY ADVISORY SERVICE**—409-0281, 40 Margaret Street, W1. Arrange NHS abortions and run a charitable clinic.

## Nightline—the 24 hr. service

### USING NIGHTLINE:

Nightline is a telephone and call in service run by students for students. It was established by L.S.E., Kings, Univ. and Central London Poly students to provide an informal, confidential service independent of official bodies giving personal information and advice. It is financed by donations from the respective Student Unions. Whilst Nightliners claim no expertise to advise other students they can provide sympathetic ears having experienced common student problems. More complicated problems where specialist advice is required can be referred using Nightline's information files.

Nightline is not just a "suicide" service, although this area cannot be ignored, but all calls are welcomed.

SO ANYTIME YOU WANT TO FIND OUT SOMETHING, TALK

OVER A PROBLEM, OR HAVE A CHAT CALL US ON 387-0680, OR DROP ROUND TO 3 GOWER PLACE FOR COFFEE.

### JOINING NIGHTLINE:

Volunteers are required for Nightline this year. There is no selection procedure but training sessions introduce newcomers to Nightline. Thereafter learning is through experience, group discussions, and guest lectures by others, e.g. the Samaritans. Commitment involves one night in three weeks (depending on numbers of nightliners) at Nightline, plus one evening at a group meeting to discuss experiences, and provide mutual support. Usually Nightline is manned by one boy and one girl between 6.00 pm and 8.00 am, all else depends on the callers.

IF YOU ARE INTERESTED PHONE US ON 387-0680.

## Facilities for children

**NURSERY:** Parents with children aged 2-5 years old are advised to apply directly to the L.S.E. Nursery Matron, Davina Stewart, in the Parish Hall. The Students' Union has some funds to subsidise parents with children from 3 months to 5 years old at the Centre for Environmental Studies Nursery nearby. For information about places at C.E.S. and for a leaflet Guide to Other Nurseries, go directly to the Welfare Officer.

**PLAYGROUP:** Older children at school usually have half-term holidays of about one week three times a year when their parents are still attending classes. Depending on parental demand, a playgroup, supervised by a full-time qualified adult assisted by volunteers, will be held in the Community Room, S.114. Parents should notify the Welfare Office in advance when they need to use the playgroup.



THE CENTRE FOR ENVIRONMENTAL STUDIES NURSERY.

**THE BROOK ADVISORY CENTRE—**As above. They also help with abortions. If you are registered with a contraception clinic, ask them first—these doctors can recommend you for an NHS abortion or refer you to a helpful organisation.

Pregnancy tests are done by the L.S.E. School Nurse who can also make appointments with two doctors to fulfil the requirements of the 1967 Abortion Act.

The Welfare Budget provides a Pregnancy Fund of £600, for women who wish to continue or terminate a pregnancy. Anyone interested should request a confidential appointment with the Welfare Officer.

### PLACES TO CRASH

**RING AFTER SIX**—836-6534, a 24-hour organisation which refers you to crash organisations.

BIT—229-8219, also refers you to somewhere of help. BIT also publishes a booklet called "Finding a place to live in London".

### THE LAW

Your local CITIZENS' ADVICE BUREAU will put you in touch with free Legal Advice Centres.

**RELEASE**—289-1123 (daytime), 603-8654 (night), 1 Elgin Avenue, W9. Arrange for free consultations with solicitors and Legal Aid.

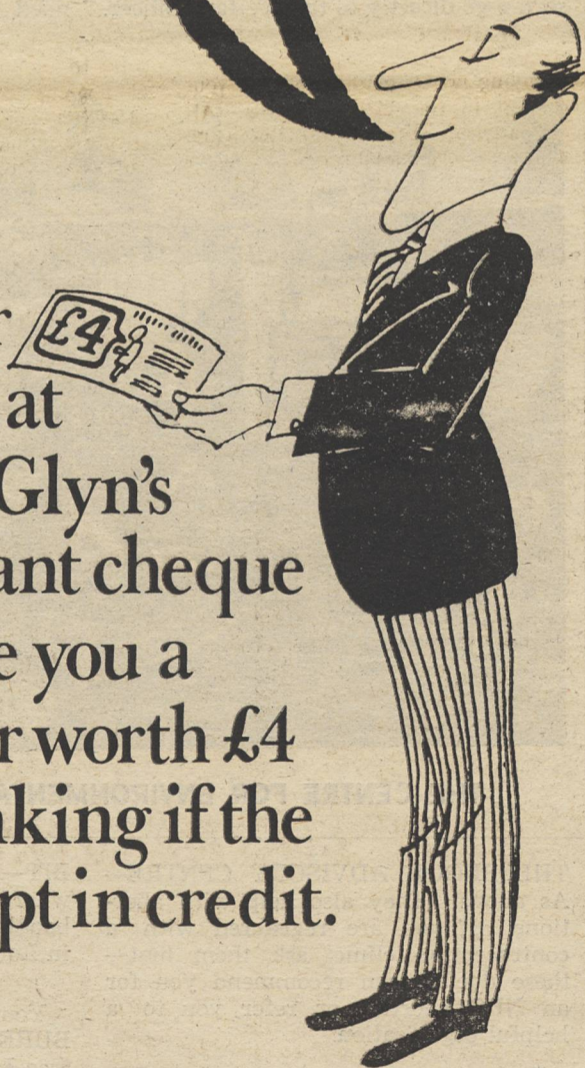
**THE LAW DEPARTMENT** at LSE arrange Legal Advice Sessions in the Students' Union during the term on Mondays and Fridays between 1-2 pm. Check with the Welfare Officer which room these sessions will be in.

**STUDENT FINANCE:** Sue Edwards, NUS, 3 Endsleigh Street, WC1—387-1277. **THE EDUCATIONAL GRANTS ADVISORY SERVICE:** 26 Bedford Square, WC1—636-4066.

# ENTERTAINME

**£4**  
**book voucher**  
 plus free banking  
 -when you give us your grant!

Open your first account at Williams & Glyn's with your grant cheque and we'll give you a book voucher worth £4 plus free banking if the account is kept in credit.



**WILLIAMS & GLYN'S BANK LTD** ❄

The most flexible of the big five banks

Manager: D. P. Cole,

Columbia House,

69 Aldwych, London, WC2B 4JJ

**WEDNESDAY, 28th SEPTEMBER—**

- 3.00 p.m. OLD THEATRE. Student Union Information Session for Postgrads. Speakers from S.U., including Dr. Payne from the Student Health Service.
- 4.30 p.m. STAFF DINING ROOM, 4th Floor, Main Building: WINE & CHEESE RECEPTION FOR POSTGRADUATES (Admission 50p).

**FRIDAY, 30th SEPTEMBER—**

- 7.30 p.m. to 11.30 p.m. THREE TUNS BAR CLUB DISCO FOR POSTGRADUATES (Admission Free plus one free drink!)

**MONDAY, 3rd OCTOBER—**

- From 11.00 a.m. TOURS OF SCHOOL BY MEMBERS OF STUDENTS' UNION. Meet at Entrance to St. Clements.
- 1.00 p.m. 509 (Anglican) CHRISTIAN SOCIETY EUCHARIST  
404 (Catholic) OLD THEATRE. OVERSEAS STUDENTS ACTION COMMITTEE.  
C.018 JEWISH SOCIETY—welcome to new students.
- 2.00 p.m. till 3.00 p.m. LAW SOCIETY—Department and Society meeting to discuss week's events.
- 5.00 p.m. OLD THEATRE INTRODUCING THE STUDENTS' UNION. Speakers: Julian Ingram (Senior Treasurer)—a real bore! Richard Silver (President of the University of London Union). Daud Khan (General Secretary), Elana Ehrlich (Welfare Officer), Emma Hamilton-Brown (Administrative Officer).
- 7.00 p.m. OLD THEATRE: FILM SOCIETY: "Lenny." Season tickets £2.50 available at the door or from Film Society Stall.
- 8.00 p.m. BRUNCH BOWL: BEAVERS' RETREAT: GRAND ATHLETIC UNION DANCE/DISCO PIZZABURGER: THREE TUNS BAR: FOLK EVENING with "STEVE SKINNER" (Admission Free).

**TUESDAY, 4th OCTOBER—**

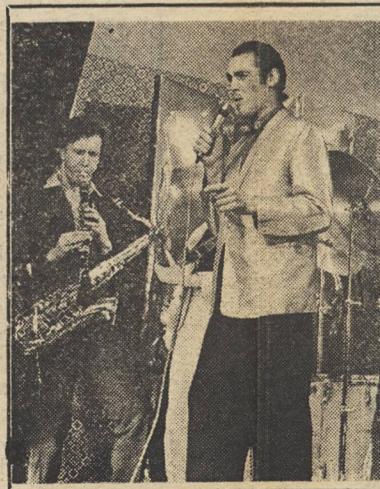
- 11.00 a.m. OLD THEATRE: DR. PAYNE, Senior Medical Officer.
- 11.00 a.m. until 3.00 p.m.: GYMNASIUM East Building: ATHLETIC UNION. Sale of Sports Goods at discount prices (you can enrol for the A.U. at the same time).
- 12.00 p.m. until 1.00 p.m.: NEW THEATRE: LIBERAL SOCIETY. Lord Avebury on Community Relations.
- 1.00 p.m. 404: CHRISTIAN SOCIETY Agape.
- 1.00 p.m. OLD THEATRE: ENTS. CONCERT "CLAYSON & THE ARGONAUTS" (Adm. Free).
- 7.00 p.m. OLD THEATRE: FILM SOCIETY: "One Flew Over the Cuckoo's Nest."

**MONDAY - WEDNESDAY, 3rd - 5th OCTOBER incl.—**

- 11.00 a.m. till 1.00 p.m. ENTRANCE TO ST. CLEMENT'S BUILDING UNION INFORMATION DESK for issue of NUS Cards, Student Discount Cards and general information (each card requires two passport photos).

**(4th and 5th October only—2.00 p.m. till 4.00 p.m.)**

- CONCOURSE STUDENTS' UNION SOCIETIES
- FLORRIES STALLS
- EXTENSION S.101A. ATHLETIC UNION STALLS
- GYMNASIUM



# ENTERTAINMENT GUIDE

## WEDNESDAY, 5th OCTOBER—

- TEACHING BEGINS IN THE MORNING  
12.00 p.m. until 2.00 p.m.  
S.421 CHRISTIAN UNION Welcoming Reception  
1.00 p.m. OLD THEATRE:  
I.S. SOCIETY/S.W.P. Tony Borey: Lewisham—  
In Defence of Violence.  
C.018 STUDENT ACTION ALLIANCE  
Meeting on Ireland.  
S.400 CONSERVATIVE SOCIETY  
Terry Durant on the EEC.  
45: GRIMSHAW CLUB: Colin Legum on Africa.  
FROM LINCOLN INN FIELDS.  
Coaches leave for New Malden Sports Ground  
(Soccer, Rugby, Hockey) and for the Welsh Harp  
(sailing).  
2.00 p.m. until 4.00 p.m.  
SPORTS GROUND, NEW MALDEN  
ATHLETIC UNION TRIALS (tea served free of  
charge).

## SUNDAY, 9th OCTOBER—

- 2.00 p.m. until 5.30 p.m.  
FROM HOUGHTON STREET  
COACH TRIP AROUND LONDON.

## MONDAY, 10th OCTOBER—

- 1.00 p.m. until 3.00 p.m. OLD THEATRE  
INTRODUCTION TO SU WEEK OF ACTION  
AGAINST RACISM AND FASCISM.  
1.00 p.m. S.075.  
AMNESTY INTERNATIONAL  
BBC FILM ON TORTURE IN PARAGUAY.  
5.00 p.m. until 7.00 p.m. OLD THEATRE  
PROGRESSIVE ARTS SOCIETY  
Speakers. Film Show.  
7.00 p.m. CONCOURSE AREA:  
CHILE SUPPORT COMMITTEE. International  
Social. Varied entertainment, cheap drink.  
Admission 25p.

## TUESDAY, 11th OCTOBER—

- 1.00 p.m. until 4.30 p.m.  
OLD THEATRE:  
SU WEEK OF ACTION AGAINST RACISM  
AND FASCISM.  
WOMEN'S GROUP To organise Festival.  
4.30 until 7.00 p.m. S42.

## TUESDAY, 11th OCTOBER—

- 5.00 p.m. until 7.00 p.m.  
S.175 PAKISTANI SOCIETY A.G.M.  
7.00 p.m. OLD THEATRE:  
FILM SOCIETY: "Dogday Afternoon."

## WEDNESDAY, 12th OCTOBER—

- 12.30 p.m. until 1.30 p.m. GAY SOCIETY.  
1.00 p.m. until 2.00 p.m. I.S. SOCIETY/S.W.P. Speaker  
on N.U.S.  
5.00 p.m. until 7.00 p.m.  
GRIMSHAW CLUB A.G.M.  
7.00 p.m. until 9.00 p.m. OLD THEATRE  
ANDY STROUTHOUS and DUNCAN HALLAS  
on Students' Union Autonomy.  
7.30 p.m. until 10.00 p.m.  
NEW THEATRE: LABOUR CLUB.

## THURSDAY, 13th OCTOBER—

- 1.00 p.m. until 3.00 p.m. OLD THEATRE  
SU AGAINST RACISM AND FASCISM.  
7.00 p.m. OLD THEATRE  
FILM SOCIETY: "The Sunshine Boys."

## FRIDAY, 14th OCTOBER—

- 1.00 p.m. until 3.00 p.m. OLD THEATRE  
SU AGAINST RACISM AND FASCISM

Some of the venues have yet to be confirmed. It is therefore  
advisable to check the Beaver Daily News first on the day in  
question.

# ENTS INFORMATION

THE Ents Committee is a Committee of the Union and as such is open to everyone who wants to come along and express their views blah blah blah.

That is the kind of boring trivia that you find in most Union handbooks when you're introduced to the Ents Committee and all the other Committees of Union. LSE Ents (our abbreviation) is different from most, ours (we like to think) is a professionally run organisation with one difference, we're all amateurs!! We work from S.118, 1st floor St Clements Building, from a dingy little room that boasts the most comfortable arm-chairs in the L.S.E.

If you pay us a visit don't be put off by first appearances. Half of the Entpersons will be drying out from the night before, slouched across the floor, the other half will be drawing on strange long cigarettes that smell funny whilst uttering phrases like "Got any skins man" or "Shit, missed my government lecture."

There is one man who is apart from these activities though, he is the one frantically leaping about the room clutching the telephone and hurling orders across the room with the manner of someone in the last stages of rabies. This is the Social Secretary, he does most of the work and gets most of the applause or boos for his pains.

Ents provides three types of Entertainment for you, Bar Socials in the Three Tuns Bar, featuring (we hope) reggae, soul, jazz, rock'n roll, also lunchtime concerts in the Old Theatre, (last year we had Alberto y lost Trios Paranoias!) and major Saturday night concerts. We only charge for the Saturday night gigs and try to keep prices as low as possible.

Last year we had artists as diverse as Arthur Brown, Kevin Coyne, Dave Edmunds and Colosseum.

That's what we are then. If you don't like it then come along on Thursdays at 1 p.m. to S.118 when the Ents Committee meets and complain or come along at any time and you'll find somebody or something there!

About the Groups (see left):—

**MONDAY, 3rd OCTOBER, 8.00 p.m.**  
"STEVE SKINNER" THREE TUNS  
STUDENT UNION BAR.

Accompanying what might well be your first ever pint in the THREE TUNS BAR will be a satirical singer-songwriter from Bristol whose material includes songs about deodorants, Leonard Cohen and tea plantations. For all Ents bar socials admission is FREE.

**TUESDAY, 4th OCTOBER, 1.00 p.m.**  
"CLAYSON & THE ARGONAUTS" FREE  
LUNCHTIME CONCERT IN THE OLD  
THEATRE.

ENTS present a free opportunity to hear music in a jugular vein from a Reading-based group who have been described as the "Tony Hancocks of rock." You may well have heard CLAYSON & THE ARGONAUTS perform to advantage on a recent BBC "In Concert" programme. Comparisons with Alberto Y Lost Trios Paranoias, the Bonzo Dog Band and the Fabulous Poodles do, I suppose, help to convey the area of musical comedy in which CLAYSON & THE ARGONAUTS seek to entertain. In essence they possess a streak of lunatic eccentricity which is uniquely British and one which Europeans and Americans will doubtless spend years trying unsuccessfully to imitate!!!! There is no admission charge for the concert. It begins at 1.00 p.m. in the Old Theatre.

**WEDNESDAY, 5th OCTOBER, 8.00 p.m.**  
"TEQUILA BLUES BAND" THREE TUNS  
BAR.

Despite having "roots" in Wokingham, TEQUILA know how to play the kind of low down blues that sound so good in the bar atmosphere of the Three Tuns. Their set includes a fair sprinkling of old blues standards and it's good to know that there are still some bands around who can get their music across without needing the almost obligatory 3½ tons of equipment. Once again admission to see this neat little combo is FREE.

**GRAND NEW STUDENTS BALL**  
SATURDAY, OCTOBER 8th

**THE DARTS**, Old Theatre, 10.45 p.m.

Headlining the night's entertainment are Britain's most exciting rock'n roll/50's style doo wop bands, THE DARTS. They were recently given the label of "new wave Teds" by an enthusiastic journalist from New Musical Express, though essentially they're a stunning live act in the tradition of Sha Na Na, Deaf School and Rocky Sharpe and the Razors. Even J. Rotten himself has been observed enjoying the DARTS on several occasions, attracted no doubt by the sheer energy, panache and character of the nine band members. If you've seen their appearance in the Carling Black Label TV advertisements then you'll have some idea of their visual impact.

Saxophonist Horatio Hornblower is rated as one of the hottest in Britain whilst John Dummer adds a wealth of experience to the band on drums. Of the lead singers, Rita injects the vivacious element leaving Big Den to provide lunacy in the form of manic assaults on the audience.

**SPITERI** 3rd Floor, Refectory.

SPITERI play SALSA. This means that an explosion of red-hot Latin American rhythms will kick off the night's entertainment in the Third Floor Refectory.

A brass section, keyboards and vocals make SPITERI more than just a dance band and allow some subtle British jazz-rock to merge with the basic Salsa rhythms, peaking occasionally in some climaxes reminiscent of John Coltrane's "Africa Brass." As Miles said of SPITERI in a recent N.M.E. review, if you want to try out some fancy footwork instead of pogoing then here's the ideal band!!! SPITERI meanwhile are steadily building a strong London following from their appearances in clubs and colleges around the capital. They're a hot band — watch out for the berimbau and the amplified gourds...!!

**90 DEGREES INCLUSIVE** 3rd Floor Refectory. Midnight.

NINETY DEGREES INCLUSIVE are very much a contemporary and progressive reggae band. Under the guidance of ex-Equal Eddy Grant they have evolved a sound that has variously been described as "roots-rock-reggae" and a "Third World-type reggae/Soul fusion." Their album and single for Phonogram shows just how successfully they have managed to combine contemporary rock instrumentation and recording techniques with the basic raw rhythms that constitute reggae. It is interesting to note that virtually the only thing (!) for which the PUNK contingent have an respect at all is roots reggae; maybe they'll view 90 DEGREES with some respect of an open mind. Like all good reggae bands 90 DEGREES have at least one member called Winston. Feel free to make use of the 1.00 a.m. bar extension in the adjacent Beavers Retreat Bar while 90 DEGREES are on stage.

## THE THREE TUNS BAR

THE Three Tuns is charmingly situated next to the boilerhouse in the St. Clements Basement, and is in proximity to the TV Room and the Snooker Room. The bar is blessed with an atmosphere akin to a mixture of British Home Stores and a Blackpool Arcade —with pool, bar billiards, table football, pinball, juke box, darts, dominoes, cards and even chess. Nevertheless, it is the official drinking centre for the plebian element of the college and as the STUDENTS UNION BAR it is a source of income for the student body together with FLORRIES and the UNION SHOP.

The bar has a full range of draught beers (Sam Smiths, Youngs and Whitbread lagers, Heineken, Stella Artois and Tuberg lagers, draught Guinness and draught cider). There is a large variety of bottled beers: from Budweiser to Theakston's Export. We also have a reasonable selection of spirits and non-alcoholic drinks which, like the beers, are sold at below London pub prices.

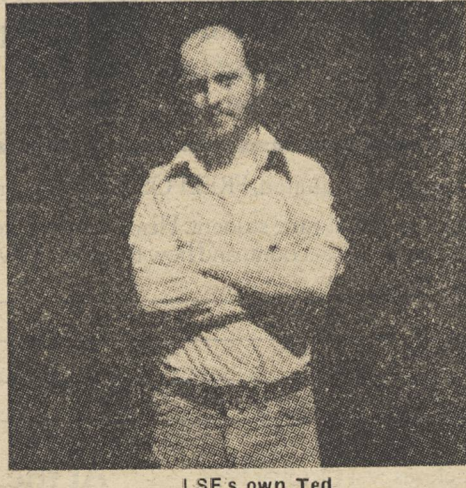
The bar is open from Monday to Friday. We intend to open for the following hours

this year: 12 noon to 2.30 p.m. and 5.00 p.m. to 10.30 p.m. (11.00 p.m. on Friday). It is also intended to attempt a hot snack service both at lunch (12.30-2.30 p.m.) and in the early evening (5.30-7.00 p.m.) although this will start as an experiment. Following on the repainting of the bar last year we have purchased some new tables and stools although it is hoped that this improved furniture will not destroy the better aspects of the old "sewer-like" atmosphere.

With the continued co-operation of ENTS it is hoped to hold further socials in the bar. Indeed, there are three socials lined up for the beginning of term: a Folk Evening (3rd October), a blues band (5th October) and a jazz big band (12th October) (see BEAVER, ENTS and THREE TUNS POSTERS for details of these and other bar events).

On behalf of the bar staff (the most impoverished of students reduced to serving other students) I welcome all our customers old and new to yet another year at L.S.E.

Ted Cater (Bar Manager).



LSE's own Ted

# COMMUNICATIONS

## External affairs

L.S.E. students are not simply Papunzels in an ivory tower. We must interact with others to change society and fight for basic rights. The S.U. is, therefore, concerned with outside campaigns, international issues, and matters concerning all students.

L.S.E. students were deeply involved in the campaigns against fee increases, victimisation of students, and racism and fascism. Our Union made the fees issue a national one and helped to link other colleges fighting on similar lines. We campaigned against victimisation of students at L.S.E. and elsewhere.

Because of the growth of racism and fascism in Britain, we have designated the second week of term a week of action against racism and fascism. Last year we demonstrated against the National Front and the British Movement. We supported the Grunwick strikers and approached the All-London Co-ordinating Committee Against Racism and Fascism. But there is much to be done particularly to build stronger links with the national minority communities facing racism daily.

Our Union works for international solidarity with oppressed peoples. We have given support to the peoples of Chile, Czechoslovakia, South Africa, Ethiopia, East Timor, India and Iran. We successfully ejected Indonesian generals and ministers from a seminar at LSE with academics and foreign office officials. These generals were

responsible for the invasion of East Timor and the deaths of thousands of freedom fighters.

Last year NUS failed miserably and one of our tasks must be to pressurise its leadership.



We should continue to support other national campaigns and unite with trade unions who are against government expenditure cuts.

This Union wants active support as follows:—

- 1 Attendance at UGMs for serious debate;
- 2 Backing of Union policy through active participation;
- 3 Supporting the Week of Action against racism and fascism;
- 4 Participation in campaigns;
- 5 Working with the External Affairs Committee to promote these activities;

Dave Fig

## Publications

Your editors are me (Carol), and Peacock. the Lodge (S.116) and we hope to have copyboxes elsewhere. We're unpaid, hard working and totally selfless people.

Seriously though, what has happened to Beaver?

This issue is exceptionally long, because it was decided to incorporate the Union Handbook into a larger Beaver. In the past a lot of the Handbook was duplicated in Beaver anyway. Julian (Senior Treasurer) was also keen because we saved a lot of money.

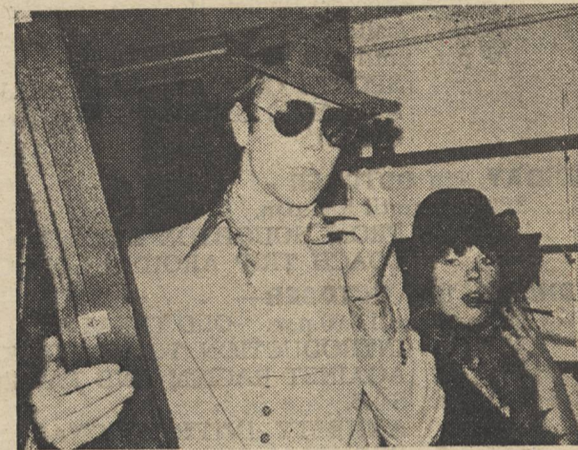
But the old style Beaver is a thing of the past. The Beaver heading, for example, has been used for nine years and it served its purpose well. But it had disadvantages. The new shape of the front page should allow us to vary the format of articles and the lack of spot colour in the heading means a considerable saving. Snidelines too have gone — because even we can't always fathom out what on earth they are about. Book Reviews will not now be printed, unless they are articles on the subject of the book. Entertainment reviews will be shorter and we will have a comprehensive coverage of London entertainment.

According to the Constitution there is a Publications Committee and an Editorial Board. In practice these Committees would be pointless and bureaucratic. We have instead an open Publications Collective comprising all helpers, and there are general meetings on a Tuesday at 1.00 p.m. Everyone is welcome.

There is always plenty to do on Beaver and we welcome help of any sort. If all you want to do is hand in an article, you are welcome to drop it into

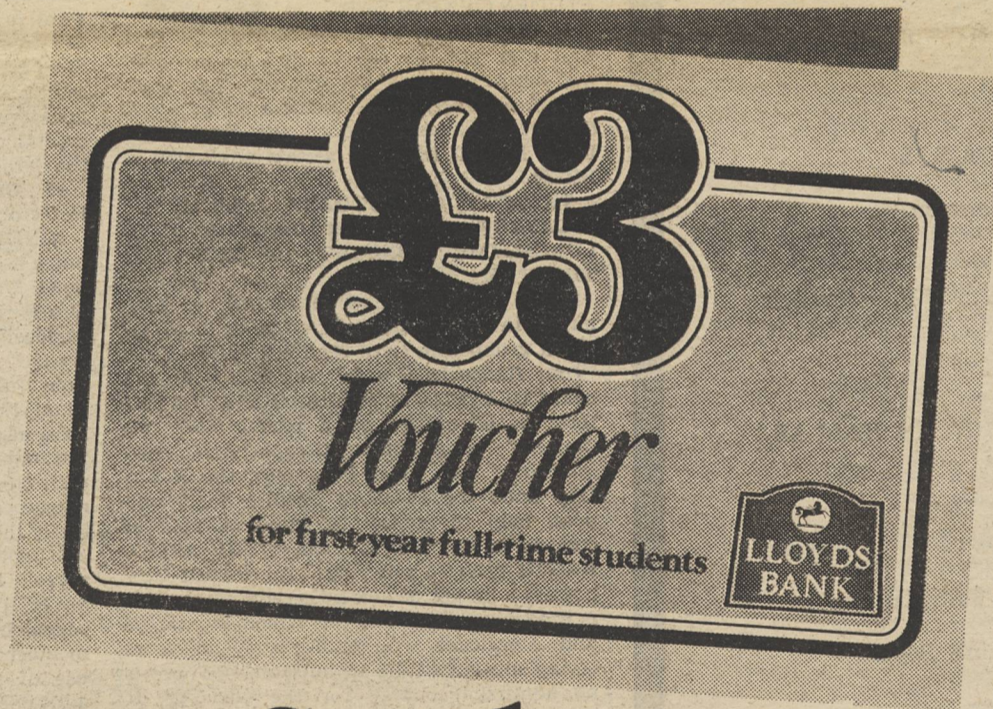
So what are we saying? Above all we hope to make Beaver a more interesting paper to read and work on. We don't want to see the Beaver Lodge used as an extension of Florries. It must primarily

The Editors you can't refuse.



be the Publications Centre. We hope to arrange it so that there is always one of the Editors in the office after 10.00 a.m. And we invite anyone interested in Beaver to come along any lunchtime.

Carol Saunders (with destructive criticism from Peacock).



## Students

This is only the first of many rewards when you open a current account with Lloyds

Are you starting your first year at college or university this autumn? Probably for the first time in your life you're going to have a sizeable amount of money to look after, probably a grant cheque — and, again, for the first time, you're really going to need a bank account to keep your money safe and help stretch it as far as it has to go.

Let Lloyds Bank help. A £3 voucher is the first reward you'll get as a first-year full-time student, if you open a current account with us by 31st October 1977. Use it towards the cost of books and stationery — it's exchangeable at most bookshops in the British Isles.

Then find out what a current account with Lloyds Bank can do for you. We offer a full range of banking services and helpful advice on money matters. And the cost? While you're a full-time student, we'll run your account free of charges if it's kept in credit.

Opening an account is a simple matter. Post the coupon — you

don't need a stamp — and we'll send you full details. Or call in at your local branch of Lloyds Bank — they can open an account for you there or at a branch close to where you'll actually be studying. You'll get your £3 voucher with your first cheque book.

To: Lloyds Bank Limited, FREEPOST, 25 Monument Street, London EC3B 3DN.

I'm a first-year, full-time student. Please send me details about opening a current account, and how to get my £3 voucher.

Mr/Mrs/Miss \_\_\_\_\_

Address \_\_\_\_\_

\_\_\_\_\_ 97



Offer closes 31st October 1977

At the sign of the Black Horse

# Athletics Union

## EXECUTIVE MEMBER

HAVING been appointed to the Athletic Union post on the Executive, my basic role is one of co-ordination between the Students' Union and the A.U.

As the SU representative, I am eligible to sit in on AU Committee meetings. The rest of the AU Committee is elected annually by the AU membership

on the basis of ability rather than politics. Along with the rest of the AU Committee I sit on the Athletic Committee of the School, chaired by Dr R. C. Estall. This Committee has so far proved (rightly) administrative, but I am supposed to put forward any relevant Union policy.

My political philosophy should need no explanation, save to say that I class myself to the right of the Tory party. (Editor's note: to the left of the NF?). This should not deter you from bringing any problems to me with which you think I can be of assistance.

**NICK WHITE**  
(Conservative).



THE Athletic Union is concerned with college-based sport, both internal and competitive. Its total membership has just reached the 1,000 mark.

The Athletic Union Office is in E65 in the East Building. This is where students join and activities are administered! In the first week of term, you can join both the A.U. and individual clubs in the Gym in the East Building. The A.U. is run by students and its committee consists of six annually elected officers. It works in conjunction with the Athletic Committee of the LSE.

LSE has a gymnasium, weights-room and squash court, plus the usual changing facilities. These are augmented by utilisation of ULU facilities and Lincoln's Inn Fields. The sports grounds are at New Malden in Surrey, about thirty minutes away. The grounds include pitches and courts, changing facilities, clubhouse and bar.

LSE entered the UAU championships in 1974, which for an institution of mere "college status" was no mean feat.

This year the University joined WIVAB—the female equivalent of UAU. All female students in the LSE will be able to enter WIVAB competitions through a system, as yet to be decided by UL.

The AU has also embarked on a programme of providing more than just sporting activities. A number of dances and social events are planned for this year, so watch out for details.

### BADMINTON

THE Badminton Club meets on Tuesdays and Wednesdays in the Gym and plays matches on Wednesdays and Saturdays. We have four teams in the University of London League (2 men, a mixed and a ladies) but we welcome anyone from beginners upwards, and racquets and shuttles are provided. We also take part in the UAU championships, and we are trying to organise a weekend for the coming season so as to enable us to play universities elsewhere in the country.

Come along and have a game whatever your standard is, expert coaching is provided for beginners.

### BASKETBALL

AT the beginning of this academic year we travelled to Guildford to take part in the UAU championships and, despite the fact that we were not used to playing on a proper full size court, we were the runners-up in the South East of England section.

We hope to take part in next year's championship. At the moment we have basketball practices on Wednesdays from 6 to 8 pm and Fridays from 12.30 to 3 pm, and we shall be most pleased to welcome any new members who might wish to join us "regulars".

### CRICKET

THE Cricket Club functions during the summer despite the dual alternatives of examinations and bathing in Trafalgar Square fountains. Our cricket at Berrylands is perhaps the finest batting wicket in South East England thanks to the efforts of our groundsman Brian Whitworth.

This year we are running two teams and have a tour arranged for the last week of term to Folkestone in Kent. We also have an outside chance of qualifying for the later rounds of the UAU championship.

### CROSS COUNTRY

IF you have at least one leg, can run a fifteen minute mile, or sink a pint in ten minutes then you

could be just the kind of person we are looking for.

For the enthusiastic runner (and, who knows, this could be our year to attract one), we have a "strong" League team and have won medals (yes, medals!) for the past two years in the London University Championships. We also hold subsidised trips each year to Wales and Holland, plus races in various parts of England.

For the less keen runners we hold subsidised trips to exactly the same places, where they can admire the scenery, meet "exciting" people, try out the local brew, or even go for a run (if the weather's nice, that is, and you feel up to it!).

Whichever category you fit into, come along anyway!

### GLIDING

LSE is affiliated to the Lasham Gliding Society. Lasham offers a full range of training and flying for complete beginners right through to experienced pilots.

There are, however, drawbacks which I feel should be mentioned. Lasham lies about fifty miles west of LSE, so travel is a problem. In the past members have formed "car pools" or have travelled by rail from Waterloo to Alton (after which there is still a few miles' walk or a wait for one of the infrequent buses that run). The other major problem is cost, even though in the past flying has been subsidised at a fifty per cent rate.

### GOLF

THE LSE Golf Club uses the facilities provided at the New Malden Golf Club in Surrey. This entails a short train journey from Waterloo for those who wish to have a round of golf. Members may play without having to pay individual green fees, except on Saturdays and Sundays. There are two half sets of clubs belonging to LSE available for use.

Unfortunately, we were unable to raise a team for the UAU championships this year. Come along and join us at the beginning of the year and we'll see the LSE Golf Club back on its feet.

### HOCKEY

IF you want a fast moving, skilful, professional game — play football. If you want a good laugh, and an enjoyable game, then come along and play hockey for LSE.

Last season marked the reformation of the LSE Hockey Club after a lapse of five years and we have ironed out all the initial problems over the organisation and running of the team. This coming season we will have a strong number of players carried over from last season, and we hope to continue with the same spirit that was created last season. So, if you are at all interested in playing hockey, come along to the trials—beginners are most welcome.

### LAWN TENNIS

THE Lawn Tennis Club has nine excellent grass courts at the Sports Ground in New Malden. During the summer there is usually a full fixture list of matches on Wednesday and Saturday afternoons against other colleges and universities. Although winter play is impossible on the New Malden courts, regular practice can be arranged on the nearby public courts at Lincoln's Inn Fields. Enthusiasm for this sport would seem to have waned a little in LSE over the past two seasons, which seems quite ridiculous when we have such good facilities. So with the start of this coming season we shall be more than pleased to welcome any new members whatever standard of play they attain to.

### MOUNTAINEERING

THE Club caters for everybody interested in mountaineering. Neither experience nor expertise is required as the Club has members willing to teach beginners the rudiments of mountaineering. Traditionally the club meets two or three times every term in the major British climbing areas (Wales, Scotland, Lakes and Peak) with summer trips to far-off places.

### NETBALL

THE Netball Club has proved quite a successful institution and with the coming of the new season we hope to form a 2nd VII to play college friendlies.

The first team is joining the London Colleges' League, with matches on Wednesdays and Saturdays. We

**President:** Will Evans—Rugby Club; Resident at Carr-Saunders Hall. Characteristic Welsh rugby player who drinks and sings with anyone. Noted opponent of the Clean Air Act. Former Rugby Captain.

**General Secretary:** Paul Whitfield — Cricket, rugby, squash; former cricket captain who guided LSE cricket out of the doldrums; resident at Rosebery Hall. Quiet, thoughtful Geordie with a flair for efficient organisation.

**External Vice-President:** Paul Knowles — Soccer club secretary. No fixed abode at time of press. Tall Liverpoolian centre-forward.

**Internal Vice-President:** Kathy Binns — Cross-country Club; England International who is living proof that you don't have to be built like a battleship to be an outstanding lady athlete. Resident in Fitzroy St. Flats. WIVAB representative.

**Treasurer:** Ian Morgan — Soccer, squash; another Scouse and also resident at Rosebery. Affable, likeable, and always hungry, this is the man who handles the purse strings.

**Assistant General Secretary:** Alastair Newton — Rugby, squash, cricket, snooker; resident at Passfield Hall; representative to the ULU Sports Council; Chairman of the Southern UAU and member of UAU and BUSF National Executives. Tends to mix badly with the President, causing volatile reaction and much imbibing.

have also been invited to join the Lincoln's Inn League with lunch-time matches mainly against local office teams.

For home matches we hire the Lincoln's Inn courts, and next season we intend to book a regular time for practices.

### BOAT

The Boat Club welcomes new members; male or female, with or without experience, who wish to row or cox. Last year we were an active Club and several of the members who had never rowed before that year were competing in races.

In the two winter terms we row on Wednesday afternoons and at the weekends; in the summer we row in the evenings. The boats are at the University Boat House, Hartington Road, Chiswick (50 minutes from the LSE by train). We will be competing in the university and local Regattas where all standards of rowing are catered for.

Come to our meetings or contact DAVID COLES (captain) via the Athletic Union.

### RUGBY

The Rugby Club runs two teams. However, there is plenty of opportunity for people of all shapes, sizes and skills to play if they wish. We have two fields, renowned for being the best in London.

Several away trips are planned each season to such rugby Meccas as Bristol, Surrey and Southampton. We also hope to have an overseas tour—New Zealand, South Africa, Japan and the Channel Islands are just a few of the possibilities. We are in the UAU South Eastern group with Kent, Surrey

and Sussex. 1974-5 was our first season in this competition.

Next year's captain is Pat Moon: you can miss him when he's sober, but he's easy to notice when drunk. If you want to play see him or any other likely looking rugby player and they will give you all the necessary details. Best place to meet the captain is in the AU or the Three Tuns Bar.

We also plan a tour to Paris during the next term to see the France v England game.

### SAILING

Our Sailing Club operates at the Welsh Harp, near Wembley. The past year has been somewhat lacking in activity due to repairs to the dam at our reservoir. Nevertheless we have three Firefly class dinghies which we race in inter-college team races and other class races operated by Wembley Sailing Club.

For the more enthusiastic, I would like to mention that the bar in the University's own clubhouse at the Harp is generally open on Wednesdays and at weekends and that the prices are very competitive! Sailing is possible on any day throughout the year, assuming you can break the ice in winter!

For the record, in the Wembley Warsail 1975, out of a fleet of about one hundred boats, an LSE firefly came in ninth, the crew rejoicing when they received bottles of wine as their prize. There are also two LSE sailors in the University of London second team, so you see the standard of our activities is by no means poor.

### SHOTOKAN KARATE

Shotokan is the style of the Japan Karate Association which has 100,000 members in Japan and 400 affiliated clubs around the world.

At LSE the foundation of a Karate Club was warmly welcomed by the students. In general, the students are beginners, but with consistent training they soon master the art of karate. We shall be most pleased to welcome any new members this next year and expect the present enthusiasm to remain within the Club.

### SOCCER

Our sphere of activity last year was widened by our participation in the UAU championships.

In the domestic arena, we have four teams playing in leagues. The first team are fairly certain to get promotion from their League, having had some very rewarding results throughout the season. All are welcome, good, bad and indifferent!

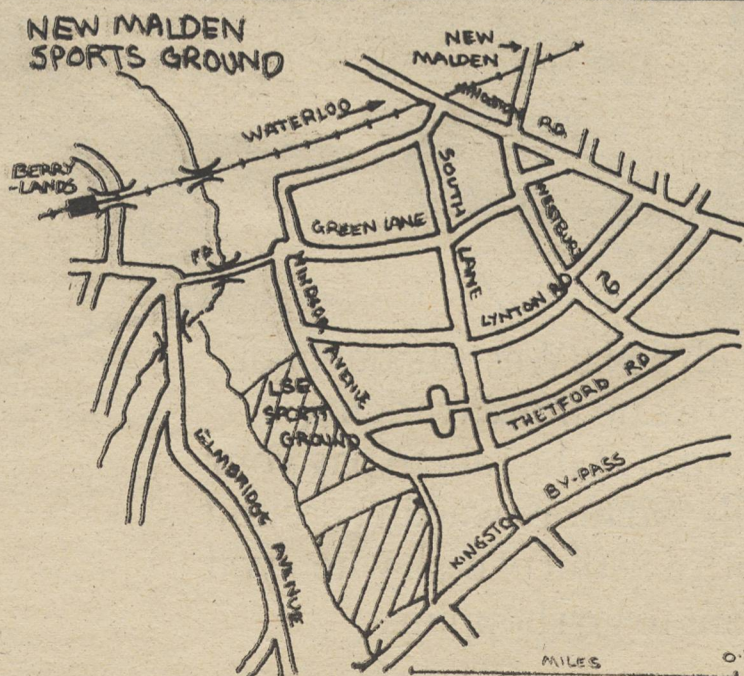
### SQUASH

Perhaps the biggest advantage of joining the Squash Club is that the sport can be played on the college premises and no court fee is charged.

For those wishing to play competitive squash (and this is the best way to improve your game), we have two teams of four players in the London Universities League; it is around this that the Club functions and its success obviously depends upon participants' enthusiasm.

For the latest developments, it is always wise to keep an eye on the Club noticeboard in the St Clements Building.

NEW MALDEN: And how to get there.



# If you think having a bank account is a headache, think of all the headaches it can save you.

24 hours a day. In a strange town. Seven days a week, rain or shine. Just put your card in the slot, punch your number and you're good for £10. You'll never have to turn your pockets inside out again looking for money.

You'll never have to worry about your money being safe with a NatWest deposit account. And when you need it, it's as easy to take out as it is to put in.

If you're studying philosophy instead of maths, don't worry. We'll do it all for you. You know exactly what you've spent. You know how much you've left. And for neatly organising your financial affairs we don't charge a thing.



With a NatWest chequebook there's no more trudging around in the rain to pay your bills. No more walking around with a fistful of cash when you want to go shopping.

# Political Groups

## THE STUDENT ACTION ALLIANCE

THE SAA was founded as a result of the occupation at L.S.E. last year concerning fee increases. During this occupation, it became clear that other student groups were using tactics which in effect betrayed student struggles by either relying on the administration or failing to mobilise the mass of students.

SAA believes that there is an unreconcilable contradiction between the interests of students and the School authorities. The School upholds the class nature of this society in both the dissemination of bourgeois ideas in education and in supplementing the policies of the State; whereas the interests of the students are with the working people as commonly exploited sections of society. Students are under ideological as well as material attack by the State and the School authorities, and it is essential that we organise.

Existing School Committees on which students have representation and even the Union, are in practice undemocratic in their



reliance on officialdom and their tendency to negotiate student interests.

We therefore stand for the revolutionary mass mobilisation of the students and winning campaigns by making them aware of their own strength.

At the present time, the cutbacks in education and in particular the discriminatory attacks on Overseas Students are the primary issues facing the student movement. For the coming academic year the SAA will be active in organising the fees strike at L.S.E., one tactic in the fees campaign. Every college should organise independently to fight the fees increases, but at the same time, we recognise the need to build a nationwide militant organisation on all student issues.

SAA recognises the need for students to take a stand on issues outside student politics and support struggles among the working class. **E.D.**

## COMMUNIST SOCIETY

THE Communist Society is the organisation of the Communist Party of Great Britain and its supporters within L.S.E.

The November, 1977, Congress of the C.P.G.B. will be reviewing the party's programme, which has been in circulation for some months in order that the fullest discussion of the draft document could take place both within the party and in the wider labour and progressive movement.

The draft as it stands centres around the strategy for a democratic road to socialism in Britain, with the involvement of the mass of the people in a broad democratic alliance, encompassing not only the traditional working class but other autonomous progressive groupings, the women's and gay movements for example.

The L.S.E. Communist Society has held meetings on various theoretical and political subjects throughout the year. Our members also work within the Broad Left alliance, which we are part of at a local and national level. We are active within the L.S.E. Student Union and also take an interest in promoting progressive social and cultural life within the college.

We run a bookstall on Thursdays outside the Library with a full range of Marxist and progressive literature. Any book we do not have in stock can be ordered for you.

We believe that students have a vital part to play in building socialism in this country, particularly in view of the ideological role which they play in society, both as

## INTERNATIONAL SOCIALISTS

THE National Organisation of International Socialist Societies is a revolutionary socialist organisation affiliated to the Socialist Workers' Party. It is the largest organisation on the revolutionary left in student politics just as the Socialist Workers' Party is in the outside arena. N.O.I.S.S. has had several members elected to the National Union of Students Executive over recent years, and more importantly, over the last year has doubled its membership in college International Socialist Societies all over the country.

This has been achieved by a policy of militant action in each area of student struggle—to smash racism and fascism on the streets and to prevent by any means necessary fascist meetings and other activities in the colleges; against all cuts and discriminatory fees increases; for a living grant for every student; for the real political, social and ECONOMIC equality of women; for an end to all discrimination against homosexuals; and for the complete political, financial and constitutional autonomy of student unions.

N.O.I.S.S. are also active alongside the S.W.P. in international affairs particularly supporting the liberation fighters in Zimbabwe, Namibia and South Africa.



They believe Russia, China and Eastern Europe to be state capitalist not socialist and support the workers in these countries in their struggle against a bureaucratic ruling class.

N.O.I.S.S. believes in overthrowing capitalism, not trying to patch it up or reform it, and therefore supports the struggle of all workers against capitalism and the bureaucratic trade union leaders that maintain it.

They believe that N.U.S. is led by an irresponsible bureaucratic clique who have consistently obstructed student struggles. To win these struggles N.O.I.S.S. believes students must ally with rank and file workers on the basis of action to defend mutual interests—against the cuts, for the right to work and to defend Union autonomy from legal attack.

The key to N.O.I.S.S. and the S.W.P.'s politics is rank and file action and they believe that only mass militant activity can win the struggles students will have to undertake this year.

**Jim Gee (LSE IS Society)**

## LIBERAL SOCIETY

THERE are two prevalent images of Liberals at L.S.E. They are either seen as a fun loving set who indulge in drunken parties full of licentious debauchery with no thought of tomorrow; or as a group of Pink Tories espousing high principles who will cry all the way to the bank when they leave L.S.E.'s cement cocoon. As libertarians we have no political objection to the first set of activities, but as a political group we are, if anything, the least conservative at L.S.E.

We are working towards a society where people control their own lives, co-operating in such a way that each individual can attain his full potentialities whilst communities achieve the goals that they freely set themselves. We acknowledge that people must be free from starvation and other forms of economic oppression before such a society can exist. We will endeavour to give every individual maximum human rights and freedoms as we travel towards this ideal society. Such rights must be irrespective of race, creed, class or sex.

We seek these aims not through the oppression of an authoritarian bureaucracy, but by a dual approach. Firstly by encouraging people in communities to take and share power, having themselves control over the house in which they live, their school or college, their work and ultimately



every aspect of their lives. Together with this we campaign electorally for the return of a radical Liberal Government to Parliament which would fundamentally redistribute wealth and power and restore civil liberties.

Members of the Liberal Society have campaigned actively last year for Human Rights with Amnesty International; Peace by opposing the arms trade and plutonium economy and supporting the Peace Peoples Rally in London. We have actively opposed racism in all its forms. Nationally the Union of Liberal Students is acknowledged by the N.U.S. Executive as having kept students rights to Social Security in vacations as part of the Welfare State by vigorous informed Parliamentary lobbying. We would like to be more actively involved in the Students' Union this year than last but this depends upon you.

If these ideas and campaigns interest you, or you would like to know more: contact **ANDREW GOODCHILD** or **KAREN BUCK** via the Undergraduates Pigeonholes, or look out for our stall in Freshers' week.

## CONSERVATIVE SOCIETY

THE Conservative Society is the largest political group in L.S.E. and is also the only effective political group which has views to the right of the Communists and Tribune Labour. We are affiliated to the Federation of Conservative Students which is the fastest growing party in NUS (last year it increased its membership by 60 per cent) and now has two members on the NUS Executive. The aims of our federation are to make the NUS a Union which serves its 750,000 members in terms of grants, fees and services and we believe that in order to do this the policies and tactics (ie assassinations not occupations etc) of NUS must be brought back to reality.

For anyone who is interested in Foreign Affairs—especially the EEC F.C.S. distributes research documents regularly, and volunteers to write them are always welcome, cut price trips are also arranged by F.C.S. International to places of interest such as the European Parliament.

L.S.E. is in Holborn & St Pancras Constituency — we have links with the local Conservative Association and students are able to help run the local party.

Con Soc. has the occasional social event



(funds permitting) and this year's activities will consist of:—

Seminars on subjects of your choice, speakers to address public meetings—this year's speakers will include Lynda Chalker, Airey-Fairy Neave, John Moore, Keith Hambson, John Biffen and others.

Where our own Union is concerned we have two members on the Executive, we will be fighting to get our policies across by playing an active part in the Union and standing candidates in elections.

Our Freshers' Stall will be open on Monday at 10.00 am in the Concourse Area—you can join there and everyone is welcome to our Freshers' Reception with Bill Van Stranbenzee MP on Thursday, 6 October, at 5.00 pm in Room 45.

During a period where individual freedom is under constant threat from the Conservative Party, membership is expanding—join us and expand it further.

## BROAD LEFT

THE Broad Left is an alliance of Left Labour, Communist and non-aligned Socialist students. It acts as a forum for discussion, action and campaigning around issues concerning students and the student movement. It aims to create strong links with the Trade Union Movement, both at a local and national level over issues of common concern—for instance in the fight against the cuts in public expenditure. Within the Students' Union we aim to strengthen the student movement at L.S.E. and nationally,



by uniting the greatest number of students around broad based campaigns. We oppose any attempts to weaken the democracy of the Union.

We shall be present in the Concourse Area during Freshers' Week. Keep your eyes open for publicity about our first meeting.

## AN ANARCHIST

THIS article reflects the views of one person and one person only (so do all the other articles on this page, but the authors like to pretend).

The Union here is composed of two elements—the necessary and the sham. On those elements which are necessary (in that they provide a service) a ponderous edifice has been built which weighs down the rest of the Union.

First separate the Useful Elements: Welfare, Entertainments, Societies, AU and External (providing details of political events outside the college). Publications too we like to think provides a service. All these elements are best run by those interested, on a voluntary basis, decisions arrived at by consensus.

Yet somehow extra bits have been tacked on:



which they play in society, both as

## LABOUR CLUB

THE L.S.E. Labour Club is a society of about 80 students, some of whom are members of the Labour Party. It is also part of the National Organisation of Labour Students (N.O.L.S.) and is entitled to send delegates to the N.O.L.S. national and London region conferences.

Within the L.S.E. the club has had regular meetings with speakers and participates within the Students' Union with a view to bringing into active participation the largest number of students sympathetic to the Labour Party.

Last year the club participated in the campaign on tuition fees and some members were regular attenders on the Grunwick picket line. The club has several representatives on the Schools Committees, including the Court of Governors and the General Purposes Committee. Also Sharon Ser, the club's chairperson, was elected to the Students' Union Executive Committee. Jon McColl, a labour club and party member, was also elected to the Union's Executive as a Broad Left Candidate.

For the coming academic year the club hopes to have itself just as strongly as last year in the Students' Union. If you are interested in the club come to our stall at Freshers' Week in the Concourse area or contact Sharon Ser through the undergraduate pigeon holes, also in the Concourse area.

Anarchy is the highest form of order!

**PEACOCK**

**BRITISH & AMERICAN**  
textbooks for all your  
Social Science courses  
**SECONDHAND** texts  
**BARGAIN** books  
and **MAGAZINES**

**PLUS**  
friendly & expert help

**THE ECONOMISTS'**  
**BOOKSHOP**  
and  
**THE SHOP ACROSS THE STREET**  
CLARE MARKET, PORTUGAL ST., WC2A 2AB



and you can sell us your textbooks  
when you've finished with them!

# JACK HOBBS LTD.

SPORTS OUTFITTERS

11a ISLINGTON HIGH ST. ANGEL  
LONDON, N1 9LQ.

Tel. 01-837 8611

*Soccer, Rugby, Hockey, Squash, Badminton*  
*Golf, Cricket, Tennis, Table Tennis, Judo*  
*Karate, Swimming, Snooker, Lawn Bowls*  
**CYCLE & ROWING MACHINES IN STOCK**

Monday - Saturday, 9.30 a.m. to 5.30 p.m.  
Early Closing Thursday, 12.30 p.m.

Nearest Tube Station: Angel

**10% Discount allowed to Students on  
Sports Goods**

**DILLON'S** in Bloomsbury has twenty-one departments, covering every academic subject at every level from introductory textbook to research material. Our secondhand department specialises in out-of-print editions in many fields.

The three shop floors contain a generous selection of popular books outside your studies as well. We have a record department too with music of every kind, and its extensive range of spoken word albums. has many of your favourite writers reading their own work

Several departments have been enlarged and relocated this summer.  
Come and see for yourself.

Monday 9-5.30  
Tuesday 9-5.30  
Wednesday 10-5.30

Thursday 9-7  
Friday 9-5.30  
Saturday 9.30-1



# DILLON'S UNIVERSITY BOOKSHOP

1 Malet Street - London, WC1E 7JB

Telephone: 01-636 1577



# ACTION GROUPS

SOME of these groups are Committees of the Union, while others are Societies. They have been lumped together because it is felt that they are trying to achieve something more than the gratification of members. They are the more active groups (illustrated by the fact that we have a Report from all of them) and you will find that they and their causes have an important place in Union life.

## WOMEN'S GROUP

THE L.S.E. Women's Group believe that the existence of autonomous Women's Groups is essential to the success of the Women's movement in the fight for liberation.

During the past year we have been active in various ways. We held discussions based on individual experiences and considered their relationship with the wider theoretical problems of the Women's Liberation movement. These took place both in the Group as a whole and in smaller consciousness raising groups. We have held public meetings with speakers, both from within the Group and from outside organisations, on topics such as Women's Aid, Equal Pay and the theory of the family.

As a group we have actively supported the Elizabeth Garrett Anderson's fight against enforced closure, the London Student Organisation's Women's Festival and the struggle for a Woman's Right to Choose whether or not to have a child. The Women's Theatre Group presented its play "Out! On the Costa Deltrico"—in conjunction with a women's band "Mama told Me" at a benefit arranged for NAC (the National Abortion Campaign) and ALRA (the Abortion Law Reform Association).

We hope, this coming year, to produce a regular broadsheet on women's issues covering women's rights, campaigns and events, both inside and outside the L.S.E.

If you want to be a part of the women's movement, or are already involved, please come to our weekly meetings. Alternatively we can be contacted via our Thursday bookstall (outside the main Library) and the Students' Union Societies pigeonholes.

## GAY CULTURE

OUR Society exists to provide a social and political forum for gay, ie homosexual and lesbian students in this college.

We hold discussion meetings, parties and put on films.

G.L.F. (the Gay Liberation Front) started at L.S.E. and the present Gay Culture Society grew out of it. There has always been a fairly open gay presence at L.S.E. and the Society, while continuing to maintain this, is also available to those who need to talk to other gay people privately. A gay Society also exists at the University of London Union who hold public meetings, wine and cheese parties and the like.

If you want any information about our Society we will hopefully have a stall at Freshers' Week, if not contact us via the Women's stall, or contact Gerald O'Hare, via u/g pigeonholes.

## OSAC

WELL over one third of all LSE students originate from abroad mostly from the Commonwealth. As "overseas students" we find ourselves having to pay discriminatory fees, to tolerate indifference to our special needs, and are subject to racist attacks and racist government policies.

In most cases overseas students do not find themselves in Britain through choice, but because of the shabby legacy of British colonialism, which in its own interests neglected the creation of adequate and sufficient academic institutions in its former colonies in the third world.

Higher education is increasingly being regarded as "consumer good" not a right and as such, overseas students are being asked to pay what is euphemistically termed the "full economic cost" of their education. This is a farcical demand when seen in the context of imperialism: just imagine if the Commonwealth was to reclaim from Britain the "full economic cost" of colonialism! It has been calculated that the annual British profit rake-off from Malaysia alone is enough to finance 15 British universities.

Nevertheless, discriminatory fees continue to be applied, and are subject to huge annual increases. The government is anticipating an ultimate fee scale of £800 (u/g) and £2,000 (p/g) to be implemented from 1978 onwards.

Overseas Students face not only racial prejudice but incidents of racial violence are becoming alarmingly frequent. Overseas students

have even been murdered recently. The gravity of the situation is obvious; it is vital we take action to fight the increasing level of racism.

The Overseas Students' Action Committee (OSAC) exists to fight racism, unfair discrimination and fees increases. Activated by the Government's proposals to increase fees to £416, in 1976/77, we engaged in a campaign to prevent this being implemented at LSE, but despite action ranging from occupation to consultation with the Director and Academic Board we were unable to prevent the increases from being implemented.

The campaign continued in 1977, and we sustained an occupation of the Registry for 16 days which was ultimately broken by the police when the Director obtained a possession order. This year a fees strike will be a part of the continuing campaign.

By supporting OSAC, you are ensuring the continuation of a strong, unified campaign to safeguard the rights of overseas students. Regular OSAC meetings are held; they are open to all and run democratically.

### Committee for the Welfare of Overseas Students

There is a committee run by the School on the general welfare of overseas students. Overseas students through the Students' Union sit on this Committee and can bring up on the agenda anything they feel to be appropriate ranging from tuition fees to food in the Refectory. Please see Emma Hamilton-Brown if you are interested in this Committee (Room S.100a).



## AMNESTY INTERNATIONAL

THE LSE Amnesty group began meeting regularly last October. Our first task has been to make our existence and the nature of Amnesty's work better known at the School. We run an information table outside the Library every Thursday, where we distribute literature and gather signatures for petitions. Articles describing Amnesty's work have appeared in Beaver and Sennet.

Amnesty work has traditionally been based on "adoption groups", which seek the release of three "prisoners of conscience" whose cases are assigned by the central research bureau in London. It has been found, however, that groups based in universities lack the continuity necessary to undertake long-term work on behalf of prisoners (sometimes five years or more). Moreover, the annual fee for adoption groups (necessary to support the research on prisoners) is over £200 p.a., which at present is beyond our means.

One of the earliest decisions of our group was therefore to constitute itself as an "action group" a relatively new feature of Amnesty work although it has been used with great success by Amnesty in the Netherlands. Action groups, unlike adoption groups are not assigned specific prisoners but work instead on a variety of short-term projects, including letter-writing, publicity and fund-raising.

At each meeting our group sends letters on behalf of the "prisoners of the month" appearing in the current International Bulletin. In addition, letters have been sent on behalf of prisoners in the Philippines, Guatemala, the Soviet Union and other countries.

We have also contacted Amnesty area co-ordination groups in Britain and adoption groups in the London area to find ways of aiding these groups in their work for adopted prisoners of conscience. We now regularly gather signatures for petitions and send letters on behalf of these groups' prisoners, in the Soviet Union and other countries.

Other projects include an information booth during LSE's South Africa Solidarity Day last

autumn, and sponsorship of a meeting on civil and political rights in India. A raffle was held in January, the £25 proceeds of which will go to aid families of Guatemalans who have "disappeared" at the hands of the security forces there in recent years. The Group also participated in a campaign to aid disappeared prisoners in Chile, during April and May.

### Campaign for the Abolition of Torture (CAT)

We are part of a worldwide network of groups, each of which has set up its own telegram tree of prominent local people—in our case, academic staff—who are willing to send telegrams on behalf of Urgent Action cases. These cases are compiled by Amnesty's International Secretariat from their own information sources and concern not only suspected cases of torture but also cases of prisoners who are ill or have received poor medical treatment, and people who have been abducted.

Details of the Urgent Action cases are spread through the Amnesty branches to local groups who then activate their own telegram

trees. In this way the government in question is bombarded with telegrams from people all over the world appealing for a particular individual. Speed is essential as torture often starts within 48 hours of arrest.

### Future Projects

One interesting proposal suggested to us through our contacts with other London Amnesty groups has been the idea of constructing a prison cell in Houghton Street early next term, obtaining if possible the sponsorship of a construction firm to supply the material. This cell would hold 12 persons at a time and would form part of our current campaign to highlight conditions in Paraguayan prisons (although prison conditions throughout Latin America are generally very bad).

Other ideas include an exhibition of torture instruments and the giving away of a typical prison meal, i.e. soup, bread and water. Students and staff would be welcome to join the demonstration.

Our group meets on Mondays at 1 p.m. in Room 509. All are welcome.



LSE Group in natural habitat

## FEES INCREASE FOR UNDERGRADUATES

OVERSEAS STUDENTS		BRITISH STUDENTS	
Position	Increase %		Increase %
Position 1966		£80	
Increase 66	212.5%	£170	0%
Position 1966/74		£250	
Increase 74	28%	£70	100%
Position 1975/6		£320	
Increase 1976/7	30%	£96	30%
Position 1976/7		£416	
Increase 1977/8	56.25%	£234	257%
Position 1977/8		£650	

## ANTI-APARTHEID

IT is under the auspices of this committee that students in L.S.E. have been actively engaged in the struggle against APARTHEID.

On June 16, 1976, the fascist South African police brutally murdered more than 500 unarmed schoolchildren who were protesting against the introduction of Afrikaans—the language of the oppressors—as the compulsory medium in which certain courses would be taught. They were also protesting against the daily degradation that APARTHEID means to the black man.

It is this regime, built off the backs of the oppressed non-white majority that is trying to expand into Africa as a whole and to dominate in totality southern Africa. It has colonised NAMIBIA, with thousands of troops stationed there to defend their interests and to combat the SOUTH WEST AFRICAN PEOPLE'S ORGANISATION (SWAPO) the liberation movement.

The struggle of the Namibian people will escalate as will the struggle of the Zimbabwean people.

And finally, but of most importance there is the Vorster regime of SA. The liberation struggle in SA led by the AFRICAN NATIONAL CONGRESS (SA) can only escalate as hundreds of young people leave the country to join the armed wing of the ANC.

Britain is one of the MAJOR investors in apartheid and it has been the student movement which has taken up the call to end all investments in SA on the part of their universities and colleges. THERE MUST BE NO SPORTING TIES WITH APARTHEID and NO CULTURAL EXCHANGES. In no way must we give any legitimacy to that regime! Is the oppressive nature of the REGIME O.K. because those who are being oppressed are BLACK?

The ANTI-APARTHEID MOVEMENT and the L.S.E. ANTI-APARTHEID GROUP do not think so and in consequence we actively campaign in L.S.E. to develop an understanding of South Africa and southern Africa as a whole, by raising money for the LIBERATION MOVEMENTS, showing films, having discussions and producing information broadsheets. COME AND PARTICIPATE and help to contribute to the international struggle against apartheid.

Notices will be posted around the School informing you of where and when meetings will be. — Come along.

# SOCIETIES

L.S.E. offers a wide variety of Societies for most interests. They are in a constant state of flux, with Societies dying and new ones being formed. There are two sorts, the National or Cultural, and the others. The Cultural are more active, last year they were allocated almost a third of the Societies' Budget.

<b>CULTURAL</b>	<b>Bridee</b>	<b>Language</b>
Afro-Asian	Catholic	Law
African	Chess	Legal Advice
Arab	Christian Union	Millenium
Asian	Cinematic	Music
Bangladesh	Debating	Monetary
Chinese	Drama	Economics
Hellenic	Geographical Assn.	Peace Group
Indian	Graduate	Photographic
Islamic	Graduate Sociology	Politics
Latin American	Graduate Economic	Psychology
Jewish	Grimshaw	Sociology
Malaysian and Singapore	Film Society	Social Science
Pakistan	History	Tawney
<b>OTHERS</b>	Industrial	<b>Urban &amp; Regional</b>
AIESEC	Relations	Planning
Anthropology	Jazz	Wine and Food

## THE CHRISTIAN UNION

THE Christian Union exists to provide fellowship for all Christians at L.S.E.

Our main meetings in the Autumn term will be held on Wednesdays at lunchtime from 1 to 3 p.m., usually with a guest speaker. They will be on such topics as the impossibility of Agnosticism; the moral implications of Abortion; the evidence for the Resurrection; and a series on living the Christian life. In addition there will be a number of prayer meetings in L.S.E. and weekly Bible Studies in the Halls of Residence.

Anyone interested in Religion or God is welcome to all meetings. On the first Wednesday of term there is a free reception for new students and there is a reception on Thursday for overseas students. For information see the C.U. Notice Board (3rd Floor, Old Building) or contact Pete Towley through the C.U. pigeon holes.

## GEOGRAPHICAL ASSOCIATION

THE Geographical Association arranges activities both academic and social, mainly for geographers. Lectures are held regularly and afterwards there is usually a reception (including free drink!). The Association shows films, has sherry parties and an annual dinner. An important part of it is the annual publication of *Horizon*. From now on it is intended to encourage the widest possible spectrum of contributions and anyone is welcome to contact the editors Jonathan Richmond or Litsa Phillipou with ideas for articles.

## Countdown

NUS has developed a National Student Discount Scheme which includes:

- ★ A 10 per cent discount off marked prices of stationery, food, clothes, petrol etc in many major high street shops.
- ★ Special student subscription rates to a range of newspapers and magazines.
- ★ A full directory of the thousands of local discounts available to students around the country.
- ★ A complete list of the 8,000 Countdown discounts on stores, restaurants and services open to students in the Scheme.

The inclusive price of the handbook and identity card is £2.50 and it will be on sale on the Union Information Stall, or the Finance Office, from the first week of term.

Carol Saunders

## Students national union

BELIEVE it or not you are now a member of the National Union of Students—a rather dubious honour. Sue Slipman is our President, and like most of the high-ups in NUS she is in the Broad Left. In fact unless you are Broad Left orientated or your own political faction has aspirations within the organisation there is very little else to recommend it.

You probably read about the collapse of NUS Travel which was largely due to crass inefficiency and double-dealing and you can rest assured that this is typical of all that goes on within NUS.

Nevertheless political groupings within LSE seem to be strongly weighted towards staying in NUS.

FIRST of all I must declare an interest on the subject, I'm seconding a motion of Disaffiliation at the 2nd Union Meeting of term.

The London Students Organisation claims to be the central student campaigning body in the Greater London Area. However, the reality is far from this. Generally, the LSO plays a negative role in student campaigns. Last year this was seen in the Fees Campaign and the Andy Strouthous Campaign. It patently fails to involve the mass of students in its own initiatives, which anyway should come naturally from the student body.

I remember miserably-attended LSO pickets where only a few colleges were represented. Apart from failing to mobilise the students all it does produce is good leaflets, which are perhaps rather too lavish.

We should pay about £560 affilia-

The General consensus of opinion is that there is a genuine need for organisation of students on a national level. Even though most people recognise that the NUS Executive has if anything played a negative role in furthering Student Campaigns, there is a widespread belief that only by remaining within the existing structure can a better organisation be achieved. The British Student Association (BSA), on the other hand, is such a shady right-wing grouping that it cannot be taken seriously by anyone who genuinely wants to see a united student front.

Carol Saunders  
(co-editor)

## L.S.O.

tion fee this year, though Julian (Senior Treasurer) may get this reduced: whisper disaffiliation and behold the wonders. For this amount I would claim we get very little.

We already pay large sums of money to NUS of which LSO is a sub-region, so this is really a form of double accounting. Last year's Senior Treasurer (a strong supporter of LSO) paid the affiliation fee (after it had jumped in price) before term began thus ensuring no debate on the subject. This year, let us hope at the minimum there is a debate.

As a communicating and co-ordinating body the LSO would be useful, if not so expensive, though even here it falls down. I tried to get something put in their mailout and I was told that not only would I have to print it myself but they wanted to see a copy first. On another occasion they were unable to provide me with a list of student papers and today all I could contact at LSO was someone (unconnected with the organisation) who was waiting for a friend.

Basically, the LSO typifies the vagueness of political organisations with no relation to the mass of students though with luck it can latch on to a campaign.

As a political organisation all the factions will compete for the leadership, try and outbid each other at Conference in a totally inane display.

In the coming debate we will see the political groups argue for LSO, only because it provides them with some semblance of reality and credibility.

We control/are trying to control LSE—perhaps then the mass of students will follow us.

Peacock

Ba/Bsc geographers will be spoken to about Geog. Ass at an early lecture. There will be a meeting for B.Sc. (Econ) geography new students in the Rodwell Jones Room S504 at 1 o'clock on 5 October.

Jonathan Richmond (Joint Editor, *Horizon*)

## THE ALDWYCH SCREEN

AFTER last year's highly acclaimed season "Movies from the mid-70s", the Aldwych Screen nee LSE Film Society has produced another great season of entertainment.

There's an all laughing, sidesplitting retrospective on Mel Brooks, including a first screening of *Silent Movie*. A Clint Eastwood supercop season of *Dirty Harry* movies; a major season on the history of the musical from the *Gold Diggers of '35* to *Bugsy Malone*, a blood curdling review of horror 70s style with a special re-showing of *The Devils* in full cinemascope. There's a short season on James Dean—fact and fiction, the best of the latest releases plus a brand new season of members' requests, ranging from *Casablanca* and *Citizen Kane* to an exclusive first showing of *2001*.

Passport to Pleasure season tickets entitle the holder to free entry to all presentations, and will be available price £2.50 (including VAT) from the Stall in the Concourse and outside the Old Theatre before the first few presentations.

Pressure of work is forcing this year's organisers to retire this term, and so if you fancy running the largest amateur film society in Britain—come to a meeting during the first week.

Paul Brown

## LAW SOCIETY

PRESUMABLY the topic to take up in a publication of this sort is the Society's relationship with the Union—and if we say that it funds us, that's about it.

Union meetings are good for a laugh and are generally treated with the contempt they deserve except in times of crisis, such as the recent occupation when, due mainly to the intervention of the infamous "gang of one" (J. Luba), we were all forced to turn out at an unsociable hour for a Law Soc. General Meeting and make V signs in the direction of the Union clique.

Naturally the Society will always seek to offer advice as far as it can when members of the Union are arrested for treason or such like—but apart from that we leave it alone.

Membership of the Society is open to all members of the School. Apply to Room 205 (Main Building).

Paul Harding (President)

## JEWISH SOCIETY

THE Jewish Society has the largest membership of any university in the country—an achievement considering L.S.E.'s numerical size. Its function is to promote things "Jewish", ranging from religious and social aspects to political ideals. During 1976/77, a successful balance was obtained with speakers talking on everything from Fascism

to the Middle East conflict, as well as parties, Israeli evenings and festive celebrations. The Society has retained a large non-Jewish membership which enables a freer understanding of ideas. It is hoped the Society will be even stronger in the forthcoming year. Membership is the fulcrum upon which our continued strength is placed.

Harris Raphael (Chairman)

## MALAYSIA SINGAPORE SOCIETY

THE Malaysia Singapore Society was formed last year. It aims to look after the interests and welfare of Malaysian and Singaporean students as overseas students. The problems of accommodation, transportation visas, vacation work and fees hardship may have to be faced. The Society tries to provide information and help, although self-reliance is encouraged.

The Society hopes to promote Malaysian and Singaporean culture and an interchange of cultures of different peoples.

Being far away from homeland for a long period, students tend to lose touch with events back home. So the Malaysia Singapore Society hopes to keep students informed.

Social events are also held.

The Society stresses active participation and is democratically run. Each member is equally responsible for the Society and must belong to a sub-committee. Membership is not restricted and anyone interested is welcome to join us. Look out for our stall in the Concourse area in the first week of term.

## CHESS CLUB

The Chess Club consists of enthusiasts who meet every Wednesday afternoon to play friendlies. The standard of player ranges from complete beginner to experienced tournament player and all are equally welcome. Anybody interested in coming along should consult the Chess Club noticeboard in the entrance to the Brunch Bowl (3rd floor Main Building).

The Chess Club also enters a team in the University of London League and anybody interested should contact last year's captain, N. Couth, through the u/g pigeonholes if they don't attend the Chess Club meetings.

The Chess Club can also supply details about the University of London Chess Club and teams, which members of LSE are eligible for.

Richard Kitchen

## ISLAMIC SOCIETY

THE LSE Islam Society is a cultural society open to all who are interested in Islam.

We maintain a library in Lincoln Chambers L308, where arrangements for "Salat" have been made. We have weekly meetings on Fridays for "Salat-ul-Jumma". Our plans for the academic year 1977-78 include talks, discussions and Eid celebrations.

For further details please see our noticeboard on the 3rd floor of the main building or contact A. S. Ahmed c/o Undergraduate pigeonholes.

## U.L.U.

LONDON UNIVERSITY is the largest in the country with over 40,000 students and is therefore rather different to any other. Since London Colleges and LSE in particular are self-contained it is possible to be committed to College activities and yet have nothing to do with the University of London Union. Many people (me included) have little idea of what actually goes on in Malet Street.

Nevertheless ULU does provide extra facilities for London students. Apart from the many societies, sports clubs and committees of ULU, there are other amenities that you are entitled to use and for which you are issued with a ULU membership card. Based in Malet Street are an adviser to Overseas students (tel: 580-5035), a Legal Aid service, the University Health Service (separate to LSE's own Student Health service), a Day Nursery for children aged 3-5, and the University of London Accommodation Office. There are also a sauna and a swimming bath there which you can use for a minimal charge.

The one aspect of ULU that you will soon come into contact with (although it is very doubtful if it will benefit you) is Sennet, the newspaper of London students. According to the ULU handbook Sennet is "a campaigning newspaper and takes up issues which directly affect London's students"—don't be fooled, you will soon realise that it is notoriously biased against student struggles. Sennet reported

last term that LSE's second occupation had failed miserably after a very short time, merely because somebody somewhere had been "reliably informed" that it was safe to report this even though it went to press before the issue was resolved. However, if you would like to help on Sennet, you should drop into the Sennet Office in Malet Street.

Carol Saunders

## Railcard

THE British Rail Student Railcard is a must if you envisage travelling widely during the year—unless, of course, you prefer to hitch anyway!

You are eligible for a Railcard if:—

★ You are aged between 18-30 inclusive.

★ And you are a full-time student. The Rail-card entitles you to travel 2nd Class on almost every route in this country for half the Ordinary single or return fare. It also entitles you to a 50 per cent discount on Sealink ships to the Channel Islands and Ireland (the discount on the Stranraer-Larne route is only approx 25 per cent). Student Rail-cards can also be used on Inter-City Sleepers, with an additional payment. The minimum student fares are £1.50 single and £3.00 return.

Student Rail-cards are obtainable from the Travel Centre, 117 Euston Road, NW1 (near Euston Station).

Carol Saunders



# HELP!

"MOST people who read Beaver consider it to be a most abysmal paper. The layout is dreary, its content appalling and as for its value to the reader . . ." We too thought this at one time but we realised that complaints are merely hot air unless you set out to change the paper. We believe that we have made great improvements, if you think you can see improvements then we welcome you.

First, the copy—quite simply the paper consists of the copy you give us. If you think that the journalistic content is zero, then get your own stuff printed. All you have to do is find S.116, or a Copy Box. It's easy to get something you want to commit to print in Beaver, the only hard part is the writing.

Secondly, production. This paper is produced by a collective which means that the decisions are the result of consensus. The editors have no special powers, rather special responsibilities, we do not have final say, the will of the collective does (distinct from the imbecility of head counting).

If you're interested in Beaver just come along to S.116 during the first two weeks of term. All we require are people who are interested, as most of the work is unskilled; layout is easily taught (but never perfected). People with special skills that would be useful though, are: photographers, typists, cartoonists, artists, journalists and Tories (we find they come in useful for grammar and spelling).

There are a few perks like books and theatre and film tickets, but we find the Beaver is a perk all in itself making our time here far more enjoyable.

Peacock (co-Editor)

## BR's VATerloo

British Rail is to refund VAT paid on Student Railcards purchased since the scheme was introduced in 1974. This follows an Appeal Court ruling that the Student Railcard is not liable for Value Added Tax.

The tax element already paid ranges from 15 pence in the case of the original Railcard issued experimentally in 1974 to 48 pence for the current 1976/77 card which cost £6.50 and expires at the end of this month.

Refunds will be available at BR stations from 1 October until 31 December, 1977, and may be claimed on surrender of a card or cards on which VAT has been paid. Students who intend renewing their cards for 1977/78 may take their refunds in the form of a credit against the cost of the new Railcard.

IT is felt that a classified section of Beaver would provide a useful service to L.S.E. students. If you want something included just throw it into the Beaver Lodge (S.116) or put it into a Copy Box. We hope the section will reach a wider readership than the noticeboards.

Reams of Paper 90p each—buff colour—Beaver Lodge (S.116).

**THE RED FLAG:** Illustrated Poster (24in. x 18in.) of Socialist's Song (five verses) £1 from Glossprint (LSE), 62 Spire Hollin, Glossop, Derbyshire.

**PENFRIEND:** Ghana—Seria Agodzo, P.O. Box 6022, ACCRA NORTH, GHANA W.A. Age 19, interests Music, Photography, Swimming and Dancing.

**GURDJIEFF-OUSPENSKY** center now accepting students: 01-450-2018.

### RIPLEY PRINTERS THANK YOU

## 'WE'RE THE GREATEST!'



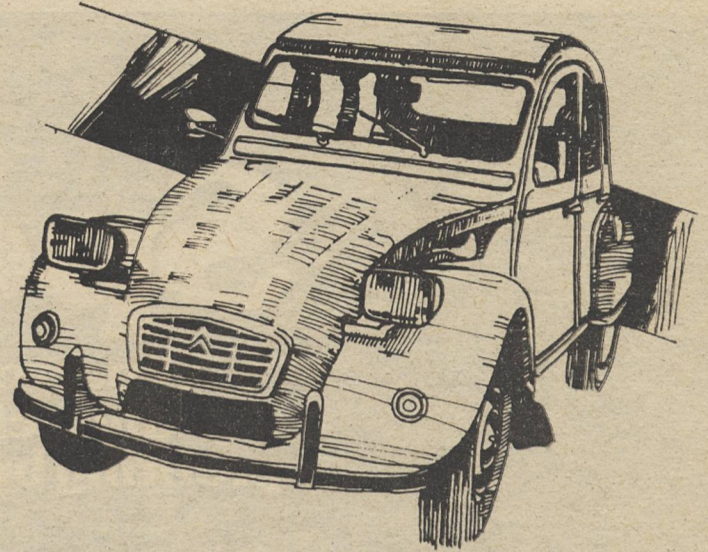
Top people go to the Union Shop. And not just for the T-shirts . . . We sell posters, foodstuffs, chemi-sundries, sweets and stationery.

### JUST COMPARE OUR PRICES:

	US	THEM (W.H.Smug, etc.)
A4 Magnapads	76p	79p to £1.14
Clipboards	45p & 65p	99p
Pocket Files	9p	22p
Ball Pentel Pen	27p	36p
A4 Ringbinder	55p	66p
Box Files	90p	£1

Meet Kate in the Union Shop, Ground Floor, St. Clements Building

# £37\*



is all it need cost you to insure this Citroen—and less if you already have any 'no-claims' bonus. 'Studentplan 6', Endsleigh's successful six-month motor policy may mean cheaper insurance for you. Visit your campus NUS Insurance Centre for details or call your nearest principal office (listed below) who will be happy to send them to you.

 **Endsleigh**  
The NUS name for insurance

BELFAST (0232) 43779 BIRMINGHAM 021-472 6368 BRISTOL (0272) 294871  
CAMBRIDGE (0223) 69564 EDINBURGH Dublin Street 031-556 9711  
LANCASTER 67301 LEEDS (0532) 42772 LIVERPOOL 051-709 4140 LONDON  
(WC1) 01-580 4311 MANCHESTER 061-273 1368 NOTTINGHAM (0602) 56318  
OXFORD (0865) 45311

\*Assumes 19 year old student living anywhere in UK (outside seven major conurbations) and able to fulfill our standard underwriting requirements.

Support your local workers' Co-operative

## COME TO FLORRIES!

Meet all your friends in your own Coffee Bar.  
A good variety of Hot and Cold Snacks at prices you didn't know still existed – Tea only 6p; Coffee 10p!  
Hot Dogs (real sausages) 16p.  
In addition you get a friendly personal service.

Open 9.00 a.m. to 4.30 p.m. (term time)