
APPENDIX.

CONTENTS OF APPENDIX.

	Page.
LETTER to the REGISTRAR GENERAL on the CAUSES of DEATH in ENGLAND in 1874, by WILLIAM FARR, Esq., M.D., F.R.S.	219
TABLES (MISCELLANEOUS)	225
TABLE of CAUSES OF DEATH in ENGLAND in 1874, classified in accordance with the NOMENCLATURE drawn up by a COMMITTEE appointed by the ROYAL COLLEGE OF PHYSICIANS OF LONDON	254

APPENDIX.

LETTER to the REGISTRAR GENERAL on the CAUSES of DEATH in
ENGLAND, by W. FARR, Esq., M.D., F.R.S.

YEAR 1874.

SIR,

THE causes of death recur in these ages with great constancy. None of those great plagues which once swept away so many thousands of the people of England have been recently observed. At the same time, in modified forms, all the diseases that have been recorded in medical history remain; they are not easily stamped out; they are fatal year after year to certain numbers, and have to be kept under constant observation. The increase of population, the extension of navigation, the new industries, the marvellous chemical operations going on, the explosive forces, the machines, and the power of steam, every year in increased activity, have developed dangers unknown in other days; and have to be encountered by new remedies. Then nations are now so associated by intercourse that a disease generated among the lowest races in unfavourable conditions may spread to every other race, and carry off many victims.

I.—ZYMOTIC DISEASES.

Diphtheria, which first appeared in the Tables under a separate heading in 1855, was fatal to 3560 persons. It attacks children, but after the age of 45 it is more fatal than scarlet fever. This disease has a distinct character; and has existed, Dr. W. Squire asserts, from the earliest ages of medical history.* He finds the first recorded case in Hippocrates (Epid. lib. v.). Aretæus describes it. Fothergill calls it, in his remarkable Essay, sore throat with ulcers. Bretonneau investigated the epidemic at Tours in 1818; and it has since that been well known. Before the publication of his book it had not found so distinct a place in the nosology. The severe epidemic of France in 1855-7 reached England apparently through Boulogne. The disease afterwards appeared in the returns under the name of diphtheria, which Bretonneau had given it. Before it had been called putrid sore throat, or *cynanche maligna*; and it had no doubt often been confounded with scarlet fever, or croup. *Cynanche maligna* still occurs in the returns; but cases so returned are classed under diphtheria, with which it is really synonymous.

It is a remarkable fact that of diphtheria, out of the same number born more die in the healthy districts of England than in Liverpool:† the proportions are 1029 in the healthy districts and 442 in Liverpool out of 100,000 born.

The deaths from scarlet fever are 2140 in the healthy districts to 3830 in Liverpool; thus reversing the other proportions.‡ The population of

* See the able article of Dr. W. Squire, L.R.C.P., in Reynolds' System of Medicine (vol. I., p. 370), for an excellent summary of all that is known of this disease.

† For years 1861-70, see Supplement to Registrar-General's 35th Report, p. exii.

‡ See Tables in Supplement to 35th Report.

the South Eastern Division is not more than two-thirds of the population of London; and yet the deaths from diphtheria (456) exceeded the deaths from that disease (419) in London. In Wales the deaths from diphtheria (340), in proportion to population, exceed the average. Generally it is more fatal where there are offensive privies than in towns with waterclosets; but cases are found in the year in variable numbers in every county, and almost in every district. Diphtheria is one of the diseases that should be carefully investigated. Sometimes it sweeps away several children of the same family.

Scarlet fever, alike in its mild and malignant forms as in its various complications, is now one of the zymotic diseases very fatal to young children. It is most fatal during the second, third, and fourth years; it pursues them relentlessly up to the tenth year; and fatal cases occur afterwards through life. The corrected mean age at death is 5·8 years; that from fatal measles being only 2·7, from whooping-cough 1·8 years.* In the year before us the deaths from scarlet fever were 24,922. Deaths occurred in the greater part of the districts of the kingdom: they can be traced in the tables, pp. 184-195. London suffered severely: the deaths were 2648. The Southern and Eastern Divisions had not many deaths. In the West Midland Division, Birmingham and parts of Staffordshire were the most conspicuous sufferers. Lancashire lost 6404 lives by this single disease, the West Riding of York 3779, Durham 1942, and South Wales 1388. The visitation was severe in the mining districts. The mean rate of mortality by scarlet fever was 1062 deaths to 1,000,000 of the population of the whole country; which is slightly above the average of the 25 years 1850-74: it was below the mortality (1461) in 1870, and was as high as the mortality of the two previous years.

Measles was more fatal than it is on the average; it was the cause of 12,255 deaths, a number rather in excess of the deaths by whooping-cough, 10,362. But the two diseases together are less fatal than scarlet fever.

Fever is now distinguished under its three forms of typhus, enteric, and simple continued. It has been proved beyond doubt that enteric fever (typhia), often called typhoid fever, is a distinct disease from typhus, with which it was confounded not only in the early history of medicine but late in the present century: the labors of the accurate Louis, of Dr. A. Patrick Stewart, Sir W. Jenner, and Dr. Murchison, have now distinguished enteric fever. No case of relapsing or famine fever has been returned in the year. The deaths by fever of the three forms were 13,735; by typhus 1762, by enteric fever 8861, and by simple continued fever 3112. The mortality to 1,000,000 living by fever in 1850-4 was at the rate of 995; and gradually fell to 657 in the five years 1870-4. The rate of mortality by typhus in the year 1869, when the three forms were first distinguished, was 197, 148 in 1870, 122 in 1871, and only 81, 71, 75 in the three years following. Thus typhus has declined; so has simple continued fever. Enteric fever, evidently due to a distinct cause, shows no symptom of decline in the corresponding years. Diarrhœa, in some points allied to enteric fever, is now more fatal than it was 20 years ago. It prevails chiefly in the heat of summer when the temperature of air and water rises above 60° Fahrenheit. It is not improbable that the mixture of sewage in water tends to spread this disease among children, to whom it is most fatal. Of the 21,204 deaths by diarrhœa, 18,024 occurred among children under 5 years of age. Cholera has only prevailed in the simple form, and has been fatal to few.

Rheumatic fever is a very serious disease in itself, and the consequential effects it leaves behind it in affections of the heart are of the most serious character. Unlike other zymotic diseases, it occurs chiefly in adults, and one attack leaves an increased liability to a second. Of the 3203 persons

* See Supplement to Registrar-General's 35th Report, p. xxxvii.

whose deaths were referred to rheumatism, 2981 were over 10 years of age; 1510 were males, 1471 females; at the ages 10 to 15, 20 to 25, rheumatism is the most fatal. It has most affinity to ague and remittent fever.

Enthetic diseases are produced by inoculation of specific matter. Those of most frequent occurrence are syphilis, gonorrhœa (and its consequence stricture,) hydrophobia, and glanders. Glanders is communicated by the horse, hydrophobia by the dog, to man. Glanders was fatal to four men; the deaths from this cause we may hope will be diminished as the men employed about horses grow more cautious. Hydrophobia was fatal to 61 persons; namely, to 49 males and 12 females; four were children under 5 years of age, eight were boys of 5-10; three were boys, three were girls, of 10-20; six were young men, one a young woman, of 20-25; 29 were men, seven women, of 25 and upwards. Hydrophobia, notwithstanding police regulations, is twice as fatal as it was 20 years ago.

Syphilis is communicated not by animals, but by men and women themselves afflicted by disease; and it was, as far as it was recorded, twice as fatal in the five years 1870-74 as it was 20 years ago. Its most fatal recorded forms occur in children under one year of age. Thus, of nearly 2000 deaths ascribed to syphilis, 1484 were babies under one year of age; of whom 770 were boys, 714 girls.

Special provision is required to prevent the diffusion of this disease; and there can be no doubt that the only effectual provision is reclusion of the sources of infection in infirmaries under well considered regulations.

Alcoholism became less fatal year by year until 1873. The deaths to 1,000,000 living by delirium tremens in the successive quinquennials, from 1850 to 1874, were 29, 26, 24, 22, 16: the last year, 1874, delirium tremens broke out again with renewed violence, and the rate reverted to 21; while the deaths ascribed to intemperance, which had on an average been 17, rose to 24. The death-rate from alcoholism in both forms was higher than it had been for some years.

II.—CONSTITUTIONAL DISEASES.

84,119 deaths were ascribed to constitutional diseases; namely, 17,791 to diseases of the diathetic order, and 66,328 to tubercular diseases, including scrofula, mesenteric disease, hydrocephalus, and phthisis. Among the diathetic diseases gout still holds its own: to it 542 deaths are directly referred. The proportion to 1,000,000 living that died of gout annually ranged from 12 to 13 in the three quinquennials 1850-64. In 1865-69 the proportion rose to 18; in the five years 1870-74 to 21, 20, 20, 20, and 23. As is usual, the men suffer more than the women from gout; and the greatest number of deaths from gout in any decennial of age occur at 65-75.

Cancer, one of the longest and most painful diseases to which mankind is subject, is growing more fatal. To it 4586 deaths were referred in 1847, 5826 in 1854, 8117 in 1864, and 11,011 in 1874. The proportion of annual deaths to 1,000,000 living was 302 in 1850-54, and 443 in 1870-74. The diagnosis of internal cancer has no doubt made considerable progress, and some cases which were formerly vaguely returned as tumors are now recognized as cancer in some of its forms; but the increase of cancer demands all the attention of pathologists. Great will be the merit of the physician who discovers how its attacks can be warded off, or its ravages arrested. It is worthy of note that of its victims 3470 are males, 7541 are females; and that the young are spared; most of the deaths occurring at ages above 45, when the reproductive forces have subsided. Under 45 years of age the number of deaths of males by cancer was 479, slightly in excess of the 427 deaths of females. At ages over 45 the deaths of males were 2991, of females 7114. The forces that

had been expended, especially in the female, in building up normal organizations were diverted towards heterologous structures. The breasts, the uterus, the glands are the most common seats of scirrhus disease. The hamatoid disease is most frequent in children.

The tubercular diseases show some signs of subsidence. The mortality from this order of diseases is sensibly declining; while consumption, the most fatal of the diseases of the prime of life, destroyed in 1,000,000 living 2811 a year in the years 1850-54, it destroyed 2283 a year in 1870-74. During these last five years the decrease has still been going on; it was at the rate of 2435 in 1870, and 2104 in 1875.

III.—LOCAL DISEASES.

226,617 persons died of local diseases; including 68,014 of diseases of the nervous system; 29,956 of diseases of the organs of circulation; 90,612 of diseases of the respiratory organs; and 23,917 of diseases of the digestive organs. There is a general increase in the deaths from all these orders of diseases. The increase in the fatal diseases of the circulatory organs is the greatest; next come diseases of the respiratory organs; the fatal diseases of the nervous system increased to some extent; those of the digestive organs declined in 1870-74.

While the rate of mortality from consumption and pneumonia declined, the mortality from bronchitis rapidly increased.

IV.—DEVELOPMENTAL DISEASES.

These diseases are incidental to the stages of development, nutrition, growth, and decay. To them 78,874 deaths were referred. They include 10,527 deaths of children prematurely born; 1496 of children malformed; 4317 of children dying in the process of teething; all of them under 5 years of age, and nearly all of them under 2 years of age, the boys dying in greater numbers than the girls.

Of the second order only women died: 116 died of paramenia; 2819 of diseases incidental to child-bearing: the greater part of them at the ages 25-45. One girl, the daughter of a laborer, died of childbirth at the age of 14. The case is well authenticated.

If we add the 3108 deaths from puerperal fever (metria) the total deaths referable to child-bearing was 5927. This implies 1 death of the mother to every 140 children born alive.

Of old age 12,495 men, and 16,109 women died, all over 65 years, and some over 100 years. Thus of 526,632 deaths no less than 498,028 were referred to injuries, diseases, and evident organic imperfections; 28,604 to old age.

A rather greater number, or 30,995 deaths, chiefly of young children, were referred to atrophy and debility.

V.—VIOLENT DEATHS.

17,920 persons died violent deaths in the year 1874. Happily in England none died in battle. 15,667 deaths were referred to accident or negligence; 409 to homicide; 1592 to suicide; and 18 to execution. The number of executions registered in the year is double the average. We have to go back to the years 1863-4 to find greater numbers.

13,414 males and 4506 females died violent deaths; so to one female three males are killed. 3978 of the number were children under 5 years of age: 2,232 were boys, 1746 were girls. As age advances the excess of deaths of males over deaths of females increases. Thus at the age 5-10 the deaths of boys by violence are 742, of girls 391, while at the

age 25-35 the deaths of men by violence are 1758, of women 233. At this stage of civilisation the men bear the brunt of the battle.

The causes of violent deaths are analysed in the Tables (pp. 196-216), which are in continuation of the Tables in previous Reports. Thus 1165 males and 84 females were killed on railways in some way or other. Of the males 743 are returned as having been run over on the line; 26 were killed by collision; 175 were crushed by carriages or engines. These deaths are now returned more accurately and completely than they were formerly to the Board of Trade; but it may be of use to give here the total deaths on railways from the time when they were distinguished in the annual reports of this office.

The following Table shows how rapidly the deaths on railways have increased since 1863. It is right to state that the number of miles of railway opened were 7,001 in 1858, 10,850 in 1871, and 11,622 in 1874. The receipts from passengers were 8,789,181*l.*, 15,476,126*l.*, and 18,774,836*l.* in the corresponding years.

DEATHS CONNECTED WITH RAILWAYS.

Years.	Males.	Females.	Total.
1863	607	40	647
1864	745	51	796
1865	885	62	947
1866	837	71	908
1867	822	55	877
1868	714	83	797
1869	735	56	791
1870	861	69	930
1871	1,042	84	1,126
1872	1,068	92	1,160
1873	1,185	105	1,290
1874	1,165	84	1,249
Total in 12 years, 1863-74	10,666	852	11,518
Annual Average -	888·8	71·0	959·8

Thus, if we take the receipts as an indication, it is probable that the passenger traffic has increased faster than the deaths of passengers, railway workmen, and strangers to the line. It is none the less true that there has been an absolute increase of violent deaths to the extent of 1249 in a year; deaths which would not have happened had no railways existed.

1313 persons were killed by horse conveyances, namely, 1113 males and 200 females. Carts, vans, and waggons are the great offenders. The trams-cars evidently require great care in their management; although they are not in such general use, they killed more people (62) than omnibuses (55). By cabs 61 persons were killed; by carriages 82; and this limitation of the numbers implies great skill on the part of the drivers in streets often crowded.

The deaths of males from injuries of various kinds in coal mines were 938, of females 4. From injuries connected with copper, tin, iron, and other mines 118 men died.

The total deaths referred directly to mechanical violence were 6,464, which have been classified, as far as the returns admitted of it, under several heads.

To chemical injuries the deaths of 1568 males and 1432 females are referred. By burns 610 males, 888 females died; the manner not being

stated in the great majority of cases. Still, it is evident that more women than men die by the clothes taking fire; for 300 deaths of females against 163 deaths of males are explicitly referred to this cause. Under five years of age the deaths of boys by burns are 338, of girls 298. At that age when the dress of many boys is as combustible as the dress of girls, the more daring sex die in greater numbers than girls.

Children in some numbers are killed every year by drinking scalding water too carelessly left in their way; 20 boys and 13 girls so died in 1874. The boys and girls, 33 in number, were thus distributed as to age; 8 were 1-2; 13 were 2-3; 5 were 3-4; 4 were 4-5; 2 were 5-10; and 1 was 10-15. The age of 2 and under 3 is that at which the young ones are just able to go about without help, and are yet uninstructed by experience how to avoid dangers.

395 males, including 305 under five years of age; and 297 females, including 263 under five years of age, were scalded to death under circumstances not defined.

86 persons, 73 males and 13 females, were destroyed by burns, scalds, and shocks of explosion; 30 by gunpowder, 3 by fireworks, 14 by gases, 1 by dynamite, 26 by steam, and 12 by ways not described. This is exclusive of 24 deaths directly referred to explosion of steam boilers.

25 boys and men were killed by lightning; nearly all following out-of-door occupations. No woman was killed by lightning.

Sunstroke was fatal to 71 males and to 19 females.

Cold on the other hand was fatal to many. 90 deaths of males and 24 of females were ascribed to "gelatio and exposure to cold." There were 17 of the number under five years of age; but the majority (48) were fifty-five years of age and upwards.

Deaths by poisoning increased in 1874; of 461 cases of such deaths 149 were suicides, and 312 were deaths by accident or negligence, murder or manslaughter. Thus, about one case in three deaths by poisoning were ascertained suicides.

2891 deaths by drowning inland or on the coast are recorded. This is exclusive of the cases of drowning out at sea and abroad.

I have previously noted the rapid increase of deaths by suffocation, to which 1560 deaths were ascribed in the year. The mode of suffocation is not stated in 346 cases; 73 persons were choked by food; 586 were smothered under the bed clothing, and 240 were overlaid.

The fact is certain; and the cause of the increase requires thorough investigation. The coroner of Newcastle-upon-Tyne, Mr. John T. Hoyle, thus writes to the Registrar General: "During the past six months I have held twenty inquests where medical witnesses proved deaths by suffocation." He calls the Registrar General's attention "to the circumstances which usually attend the sudden deaths of children, which have been very frequent of late years in the borough." "In a great many cases it turns out, on an inquest being held, that the children have been accidentally suffocated in bed by the parents, very frequently either one or both of them, going to bed in a state of intoxication." Here is another evil to be referred to the evil effects of excessive drinking.

I have the honor to be,

Sir,

Your obedient servant,

WILLIAM FARR.

To
The Registrar General.

APPENDIX TABLES,

1874.

Causes explained

TABLE 1.—Causes of Death registered in England

Table with columns for Class, Causes of Death, and years 1847-1860. Rows include All Causes, Specified Causes, Zymotic Diseases, Constitutional, Local, Developmental, Violent Deaths, Miasmatic Diseases, Diathetic, Tubercular, Diseases of Nervous System, Digestive Organs, Urinary Organs, Organs of Generation, Organs of Locomotion, Integumentary System, Developmental Dis., Accident or Negligence, Battle, Homicide, Suicide, Execution, Sudden Deaths, Causes Not Specified, and Order 1 (Small-pox, Measles, Scarlet Fever, Diphtheria, Quinsy, Croup, Whooping-cough, Typhus Fever, Enteric or Typhoid Fever, Simple Continued Fever).

NOTE.—For the causes of death in the 5 years 1838-42, see Table 7 in the Appendix to the Thirty-fourth Annual Report. The causes of death were not abstracted for the 4 years 1843-46. * Order 2, comprising Violent Deaths in Battle, is inapplicable to the civil population. † The number of persons executed in the several years will not necessarily correspond with that returned for the same years in the "Criminal Returns," inasmuch as the executions therein recorded in each year are classed according to the dates of conviction, while the numbers in this Table are placed under the years in which the deaths are registered.

in each of the 28 Years 1847-1874.

Table with columns for years 1861-1874 and Causes of Death. Rows include All Causes, Specified Causes, Zymotic Diseases, Constitutional, Local, Developmental, Violent Deaths, Miasmatic Diseases, Diathetic, Tubercular, Diseases of Nervous System, Digestive Organs, Urinary Organs, Organs of Generation, Organs of Locomotion, Integumentary System, Developmental Dis., Accident or Negligence, Battle, Homicide, Suicide, Execution, Sudden Deaths, Causes Not Specified, and Order 1 (Small-pox, Measles, Scarlet Fever, Diphtheria, Quinsy, Croup, Whooping-cough, Typhus Fever, Enteric or Typhoid Fever, Simple Continued Fever).

† The cases of angina membranacea were included with scarlet fever until 1860; for several years prior to that date they were, however, separately distinguished by a marginal note on the ticking sheet, as they have been since 1860, when they were first classed to diphtheria.

TABLE 1. (continued.)—Causes of Death registered

Table with columns for Class, CAUSES OF DEATH, and years 1847-1860. Rows include various medical conditions like Erysipelas, Puerperal Fever, Cholera, and others, grouped into orders.

in England in each of the 28 Years 1847-1874.

Table with columns for years 1861-1874 and CAUSES OF DEATH. Rows include various medical conditions like Erysipelas, Puerperal Fever, Cholera, and others, grouped into orders.

TABLE 1. (continued.)—Causes of Death registered

Class.	CAUSES OF DEATH.	1847	1848	1849	1850	1851	1852	1853	1854	1855	1856	1857	1858	1859	1860
	ORDER 5.														
	1 Nephritis - - -	162	163	172	178	183	197	237	205	244	269	268	265	284	245
	2 Ischuria - - -	87	86	86	91	100	106	109	118	120	83	97	118	103	96
	3 Bright's Disease } (Nephria) - - -	254	422	400	430	477	570	641	776	793	954	983	1,105	1,258	1,390
	4 Diabetes - - -	383	342	416	422	403	402	412	436	448	493	482	514	480	536
	5 Calculus (Stone) -	265	222	219	249	204	208	224	188	234	233	182	199	191	179
	6 Cystitis - - -	257	230	239	214	212	231	236	276	278	270	258	256	276	299
	7 Kidney Disease, &c.-	1,543	1,365	1,418	1,540	1,593	1,724	1,793	1,776	1,925	1,985	1,932	2,226	2,144	2,245
	ORDER 6.														
	1 Ovarian Dropsy -	193	202	214	219	196	178	217	220	208	211	237	239	277	244
	2 Uterus, &c. Disease -	706	701	716	702	762	699	743	794	834	828	832	909	922	874
	ORDER 7.														
	1 Synovitis (Arthritis)	52	43	54	54	72	84	81	101	80	71	62	77	81	68
	2 Joint Disease, &c. -	791	814	1,108	954	1,020	1,055	1,146	1,399	1,348	1,258	1,244	1,087	1,204	1,398
	ORDER 8.														
	1 Phlegmon - - -	222	426	645	422	481	365	309	239	255	126	165	711	466	413
	2 Ulcer - - -	302	290	300	340	317	296	351	358	278	289	300	332	364	332
	3 Skin Disease, &c. -	163	153	191	169	198	232	205	258	265	293	330	302	277	237
IV.	ORDER 1.														
	1 Premature Birth * -	7,326 [†]	5,961 [†]	6,423 [†]	6,229 [†]	6,804 [†]	7,018 [†]	7,000 [†]	7,228 [†]	7,108 [†]	6,926 [†]	7,590 [†]	7,307	7,432	7,642
	2 Cyanosis - - -		167	161	167	230	279	295	294	300	341	350	386	403	398
	3 Spina Bifida - - -	687	216	178	212	210	242	279	243	247	299	325	313	356	350
	4 Other Malformations -		414	374	402	346	340	291	407	369	360	360	385	379	420
	5 Teething - - -	4,538	4,120	4,627	4,086	4,408	4,413	4,676	4,369	4,057	3,660	3,992	4,021	3,730	3,896
	ORDER 2.														
	1 Paramenia - - -	133	138	139	127	87	98	115	70	124	111	91	51	56	47
	2 Childbirth (see Me- tria) - - -	2,442	2,080	2,174	2,139	2,281	2,275	2,268	2,055	1,900	1,821	1,951	2,063	2,258	2,136
	ORDER 3.														
	1 Old Age * - - -	24,783 [†]	26,188	26,750	25,567	25,980	26,376	29,130	26,466	29,714	23,931	26,847	28,509	27,104	28,442
	ORDER 4.														
	1 Atrophy and Debility*	26,217 [†]	21,330 [†]	23,002 [†]	22,292 [†]	24,350 [†]	25,113 [†]	25,051 [†]	25,864 [†]	25,434 [†]	24,783 [†]	27,162 [†]	26,360	27,990	26,930
V.	ORDER 1. (ACCIDENT OR NEG- LIGENCE.)														
	1 Fractures and Con- tusions - - -												5,159	5,482	5,417
	2 Gunshot Wounds - -												136	104	103
	3 Cut, Stab - - -												80	75	81
	4 Burns and Scalds -												3,125	2,978	3,166
	5 Poison - - -												282	279	240
	6 Drowning - - -												2,124	2,494	2,264
	7 Suffocation - - -												903	952	1,061
	8 Otherwise - - -												714	692	659
	ORDER 3. (HOMICIDE.)														
	1 Murder and Man- slaughter - - -												344	338	377
	Deaths from Violence were not classified according to Orders prior to 1858														
	ORDER 4. (SUICIDE.)														
	1 Gunshot Wounds - -												60	54	59
	2 Cut, Stab - - -												243	270	276
	3 Poison - - -												119	112	156
	4 Drowning - - -												197	208	219
	5 Hanging - - -												570	540	562
	6 Otherwise - - -												86	64	86
	ORDER 5. (EXECUTION.) †														
	1 Hanging - - -												9	7	10
	Violent Deaths (not classified) - - -	13,032	12,768	12,445	13,128	12,659	13,520	13,729	14,040	14,125	13,960	13,917	-	-	32
	Sudden Deaths (Cause unascertained) - -	3,708	3,197	3,555	3,560	3,458	3,591	4,018	3,993	4,139	3,474	3,403	3,096	2,821	2,894
	Causes not specified or ill-defined - - -	18,841	14,641	10,248	9,776	9,070	9,187	9,327	8,267	8,205	7,204	6,693	5,638	5,484	5,767

* From 1847 to 1857, inclusive, premature birth and infantile debility were abstracted under one heading. In order, therefore, to the proportions which the numbers under each bore to the sum of the two in subsequent years, when they were separately classified. † See note on page 226.

in England in each of the 28 Years 1847-1874.

1861	1862	1863	1864	1865	1866	1867	1868	1869	1870	1871	1872	1873	1874	CAUSES OF DEATH.
														ORDER 5.
306	273	335	390	381	406	442	495	533	658	636	606	695	864	1 Nephritis.
102	104	143	126	140	121	106	118	125	126	129	107	105	104	2 Ischuria.
1,448	1,541	1,700	1,793	1,860	2,039	2,203	2,076	2,496	2,616	2,651	2,911	3,157	3,342	3 Bright's Disease (Nephria).
537	574	551	665	669	678	680	671	735	735	805	769	827	882	4 Diabetes.
168	196	172	184	189	193	201	213	194	195	197	207	225	207	5 Calculus (Stone).
343	342	340	383	325	393	381	463	432	415	437	473	541	531	6 Cystitis.
2,318	2,298	2,337	2,563	2,710	2,791	2,920	2,836	2,804	2,758	2,773	2,779	2,976	2,999	7 Kidney Disease, &c.
														ORDER 6.
235	280	255	259	209	218	247	222	234	224	194	200	207	168	1 Ovarian Dropsy.
894	947	964	1,035	1,032	1,023	1,069	1,036	1,049	1,074	1,027	1,081	1,071	1,123	2 Uterus, &c. Disease.
														ORDER 7.
79	70	73	89	74	70	75	82	81	106	105	92	90	111	1 Synovitis (Arthrit.)
1,545	1,518	1,692	1,771	1,786	1,572	1,672	1,751	1,765	1,787	1,892	1,832	1,883	1,928	2 Joint Disease, &c.
														ORDER 8.
454	409	530	550	453	482	430	565	578	657	600	534	643	942	1 Phlegmon.
401	387	435	463	424	403	443	436	405	392	392	368	388	458	2 Ulcer.
286	325	347	377	363	368	362	356	384	399	406	409	408	459	3 Skin Disease, &c.
														ORDER 1.
7,610	7,706	8,121	8,339	8,791	8,943	8,990	8,757	8,666	9,195	9,650	10,334	10,186	10,527	1 Premature Birth.
420	459	456	465	483	514	481	547	532	596	570	571	566	573	2 Cyanosis.
394	386	402	371	377	413	391	411	460	435	390	452	486	468	3 Spina Bifida.
441	424	408	461	433	471	504	474	462	449	458	452	439	455	4 Other Malformations.
4,251	3,812	4,116	4,285	4,271	4,293	4,300	4,145	4,083	4,183	4,108	4,093	4,273	4,317	5 Teething.
														ORDER 2.
59	61	75	75	86	111	115	130	122	127	113	99	99	116	1 Paramenia.
2,109	2,137	2,433	2,532	2,490	2,485	2,346	2,307	2,102	2,383	2,471	2,403	2,375	2,319	2 Childbirth (see Metria).
														ORDER 3.
27,373	26,780	27,268	29,498	28,709	28,546	28,646	26,050	27,932	28,889	28,038	26,900	29,282	28,604	1 Old Age.
														ORDER 4.
29,291	27,077	28,193	29,634	32,161	31,097	32,317	32,654	29,954	30,530	30,458	29,983	30,333	30,995	1 Atrophy & Debility.
														ORDER 1. (ACCIDENT OR NEG- LIGENCE.)
5,589	5,397	5,852	6,500	6,343	6,661	6,596	6,508	6,303	6,447	6,837	6,974	7,221	7,374	1 Fractures and Con- tusions.
120	111	108	126	112	131	124	118	105	130	102	74	112	98	2 Gunshot Wounds.
41	54	82	115	93	97	103	125	95	111	118	76	141	141	3 Cut, Stab.
3,053	2,767	2,766	2,987	2,713	2,533	2,600	2,553	2,545	2,578	2,612				

Rates special

TABLE 2.—Causes of Death registered in England in each of the 16 Years 1859-1874. To 1,000,000 PERSONS LIVING, the DEATHS from each CLASS of CAUSES, and from each CAUSE.

Table with 17 columns (years 1859-1874) and rows categorized by Class (I-V) and Cause of Death. Includes sub-sections for Classes (Zymotic, Constitutional, Local, Developmental, Violent Deaths) and Orders (Miasmatic, Diathetic, Tubercular, Nervous System, etc.).

* Order 2, comprising Violent Deaths in BATTLE, is omitted as inapplicable to the civil population. † The deaths of which the cause was not specified have been distributed proportionally over all the causes in the Table.

TABLE 2. (continued.)—Causes of Death registered in England in each of the 16 Years 1859-74. To 1,000,000 PERSONS LIVING, the DEATHS from each CLASS of CAUSES, and from each CAUSE.

Continuation of Table 2 from page 232, showing detailed causes of death categorized into Orders 1, 2, 3, and 4. Includes specific diseases like Small-pox, Measles, Typhus Fever, etc., with data for years 1859-1874.

TABLE 2. (continued.)—Causes of Death registered in England in each of the 16 Years 1859-74. To 1,000,000 PERSONS LIVING, the DEATHS from each CLASS of CAUSES, and from each CAUSE.

Class.	CAUSES OF DEATH.	1859	1860	1861	1862	1863	1864	1865	1866	1867	1868	1869	1870	1871	1872	1873	1874
	9. Stricture of Intestines -	15	15	14	13	14	14	13	15	13	13	13	12	13	14	13	13
	10. Fistula -	5	6	6	5	4	5	4	4	4	4	4	5	5	5	5	4
	11. Stomach Disease, &c. -	138	146	140	136	138	133	139	140	139	141	126	127	118	111	115	116
	12. Pancreas Disease, &c. -	1	6	9	1	1	5	1	8	5	4	4	6	1	6	4	1
	13. Hepatitis -	76	68	70	63	69	69	71	67	62	63	61	60	56	55	55	60
	14. Jaundice -	64	64	68	64	70	74	75	70	70	71	76	70	71	69	69	69
	15. Liver Disease, &c. -	228	230	235	233	239	249	280	269	261	255	260	253	260	266	265	265
	16. Spleen Disease, &c. -	3	3	4	5	4	3	3	4	4	4	4	4	4	5	3	4
	ORDER 5.																
	1. Nephritis -	15	12	15	14	16	19	18	19	21	23	25	30	28	26	30	37
	2. Ischuria -	5	5	5	5	7	6	7	6	5	5	6	5	6	5	5	4
	3. Bright's Dis. (Nephria) -	65	71	73	77	84	87	90	97	104	97	115	117	117	127	136	142
	4. Diabetes -	25	27	27	29	27	32	32	32	32	31	34	33	36	34	36	37
	5. Calculus (Stone) -	10	9	8	10	8	9	9	9	10	9	9	9	9	10	9	9
	6. Cystitis -	14	15	17	17	17	19	16	19	18	22	20	19	19	21	23	23
	7. Kidney Disease, &c. -	109	115	118	113	115	125	130	133	138	132	128	124	123	121	128	128
	ORDER 6.																
	1. Ovarian Dropsy -	14	12	12	14	13	13	10	10	12	10	11	10	9	9	9	7
	2. Uterus Disease, &c. -	47	45	45	47	47	50	50	49	50	48	48	48	46	47	46	48
	ORDER 7.																
	1. Synovitis (Arthritis) -	4	3	4	3	4	4	4	3	4	4	4	5	4	4	4	5
	2. Joint Disease, &c. -	62	72	78	76	83	86	86	75	78	82	81	80	84	80	81	82
	ORDER 8.																
	1. Phlegmon -	24	21	23	21	26	27	22	23	20	26	26	30	27	23	27	40
	2. Ulcer -	19	17	20	19	21	22	20	19	21	20	19	16	17	16	17	19
	3. Skin Disease, &c. -	14	13	14	16	17	18	17	18	17	17	18	18	18	18	18	20
IV.	ORDER 1.																
	1. Premature Birth -	382	390	383	383	399	405	423	426	423	409	399	413	423	451	440	448
	2. Cyanosis -	21	20	21	23	22	23	23	24	23	25	25	27	25	25	24	24
	3. Spina Bifida -	18	18	20	19	20	18	18	20	18	19	21	19	17	20	21	20
	4. Other Malformations -	19	21	22	21	20	22	21	22	24	22	21	20	20	20	19	20
	5. Teething -	191	198	214	190	202	208	206	204	203	193	188	188	182	179	184	184
	ORDER 2.																
	1. Paramenia -	3	2	3	3	4	4	4	5	5	6	6	5	5	4	4	5
	2. Childbirth (see Metria) -	116	112	106	106	120	123	120	118	111	107	96	107	109	105	103	120
	ORDER 3.																
	1. Old Age -	1390	1449	1377	1331	1340	1434	1382	1361	1350	1213	1287	1297	1242	1175	1263	1219
	ORDER 4.																
	1. Atrophy and Debility -	1435	1372	1473	1347	1386	1441	1549	1481	1523	1521	1380	1371	1349	1309	1307	1320
V.	ORDER 1.																
	(ACCIDENT OR NEGLIGENCE.)																
	1. Fractures and Contusions -	282	277	281	267	288	316	330	317	310	303	291	289	303	307	312	314
	2. Gunshot Wounds -	5	5	6	6	5	6	5	6	6	5	6	6	4	3	5	4
	3. Cut, Stab -	4	4	2	3	4	6	4	5	5	5	6	4	5	3	3	6
	4. Burns and Scalds -	153	161	154	138	136	145	131	121	123	119	117	116	116	96	98	109
	5. Poison -	14	12	13	13	14	13	13	13	13	12	11	11	12	10	10	13
	6. Drowning -	128	115	118	122	122	132	136	133	126	136	124	112	115	131	116	111
	7. Suffocation -	49	54	51	61	56	61	63	60	64	56	61	64	67	68	67	67
	8. Otherwise -	35	34	38	39	52	55	51	54	53	48	41	44	41	41	41	43
	ORDER 3.																
	(HOMICIDE.)																
	1. Murder and Manslaughter -	17	19	16	21	20	20	21	23	18	21	18	17	17	17	18	17
	ORDER 4.																
	(SUICIDE.)																
	1. Gunshot Wounds -	3	3	3	3	3	3	3	3	5	3	3	3	3	2	3	4
	2. Cut, Stab -	14	14	13	11	13	12	12	13	13	16	14	13	13	13	13	15
	3. Poison -	6	8	6	6	6	7	7	6	6	7	7	6	6	6	6	6
	4. Drowning -	11	11	11	10	12	10	11	10	11	14	13	14	14	15	14	12
	5. Hanging -	27	30	30	30	28	27	28	25	22	26	28	26	24	25	25	25
	6. Otherwise -	3	4	5	5	4	5	6	7	7	6	6	6	5	5	6	6
	ORDER 5.																
	(EXECUTION.)																
	1. Hanging -	*4	*5	*6	1	1	1	*3	*6	*5	*5	*4	*3	*2	*4	*4	*8
	Violent Deaths (not classed) -	..	2	6	7	8	7	14	10	14	13	12	12	7	8	9	10
	Sudden Deaths (Cause unascertained) -	145	146	136	138	147	162	153	173	165	137	140	143	140	135	144	146
	Causes not specified or ill-defined -	*	*	*	*	*	*	*	*	*	*	*	*	*	*	*	*

* The deaths of which the cause was not specified have been distributed proportionally over all the causes in the Table.

TABLE 3.—Causes of Death in England in 1874. Proportional Numbers dying from each Class of Causes, and from each Cause.

Class.	CAUSES OF DEATH.	1874		Class.	CAUSES OF DEATH.	1874		Class.	CAUSES OF DEATH.	1874	
		Deaths to 1,000,000 Persons living.	Proportional Number in 1,000,000 Deaths.			Deaths to 1,000,000 Persons living.	Proportional Number in 1,000,000 Deaths.			Deaths to 1,000,000 Persons living.	Proportional Number in 1,000,000 Deaths.
	ALL CAUSES -	22,269	1,000,000		12 Influenza -	10	469		ORDER 5.		
	(CLASSES.)				13 Dysentery -	29	1,308		1 Nephritis -	37	1,653
I.	ZYMOTIC DISEASES	4,764	213,922		14 Diarrhoea -	904	40,559		2 Ischuria -	4	199
II.	CONSTITUTIONAL	3,583	160,905		15 Cholera -	25	1,140		3 Bright's Dis. (Nephria) -	142	6,393
III.	LOCAL	9,653	433,479		16 Ague -	5	218		4 Diabetes -	37	1,637
IV.	DEVELOPMENTAL	3,360	150,873		17 Remittent Fever -	3	151		5 Calculus (Stone) -	9	396
V.	VIOLENT DEATHS	763	34,277		18 Rheumatism -	136	6,127		6 Cystitis -	23	1,016
	SUDDEN DEATHS, CAUSE UNASCERTAINED -	146	6,544		19 Other Zymotic Dis. -	5	231		7 Kidney Disease, &c. -	128	5,736
	(ORDERS.)				ORDER 2.				ORDER 6.		
I.	1. MIASMATIC DISEASES	4,478	201,072		1 Syphilis -	85	3,820		1 Ovarian Dropsy -	7	321
	2. ENTHETIC	97	4,380		2 Stricture of Urethra -	10	436		2 Uterus, &c. Disease -	48	2,148
	3. DIETIC	128	5,750		3 Hydrophobia -	2	116		ORDER 7.		
	4. PARASITIC	61	2,720		4 Glanders -	*2	8		1 Synovitis (Arthritis) -	5	212
II.	1. DIABETIC	758	34,031		ORDER 3.				2 Joint Disease, &c. -	82	3,688
	2. TUBERCULAR	2,825	126,874		1 Privation -	3	140		ORDER 8.		
III.	DISEASES OF--				2 Want of Breast-milk -	61	2,754		1 Phlegmon -	40	1,802
	1. NERVOUS SYSTEM	2,897	130,099		3 Purpura and Scurvy -	19	842		2 Ulcer -	19	876
	2. ORGANS OF CIRCULATION	1,276	57,301		4 Alcohol. { a Del. Trem. -	21	928		3 Skin Disease, &c. -	20	878
	3. RESPIRATORY ORGANS	3,860	173,325		4 Alcohol. { b Intem. -	24	1,086		ORDER 1.		
	4. DIGESTIVE ORGANS	1,019	45,749		1 Thrush -						

TABLE 4.*—Mean Annual Rate of Mortality in England from each CLASS of CAUSES and from each CAUSE of DEATH during the 25 Years 1850-74, and in each Quinquenniad of that Period; also the Rate of Mortality in the Years 1870, 1871, 1872, 1873, and 1874.

CLASSES.	CAUSES OF DEATH.	ANNUAL DEATHS to 1,000,000 LIVING.										
		25 Years 1850-74.	5 Years 1850-54.	5 Years 1855-59.	5 Years 1860-64.	5 Years 1865-69.	5 Years 1870-74.	Year 1870.	Year 1871.	Year 1872.	Year 1873.	Year 1874.
	ALL CAUSES - -	22282.8	22290.3	22052.6	22248.7	22760.4	22053.0	22,047	22,622	21,340	21,087	22,269
	SPECIFIED CAUSES-	22056.6	21877.3	21785.2	22102.5	22306.8	21911.4	22,804	22,482	21,205	20,943	22,123
	(CLASSES.)											
I.	ZYMOTIC DISEASES	5038.7	5234.1	5089.2	4890.3	5171.8	4849.2	5411	5448	4773	3850	4764
II.	CONSTITUTIONAL "	4205.4	4598.6	4311.6	4194.0	4145.4	3777.6	3985	3856	3768	3696	3583
III.	LOCAL "	8499.7	7644.6	8124.4	8676.6	8887.2	9165.6	9216	9049	8622	9283	9653
IV.	DEVELOPMENTAL "	3551.5	3653.8	3568.4	3563.0	3605.0	3367.4	3447	3377	3288	3365	3360
V.	VIOLENT DEATHS -	761.3	746.2	741.6	769.6	797.4	751.6	745	752	754	744	763
	(ORDERS.)											
I.	1. MIASMATIC DISEASES	4789.4	5019.2	4807.2	4652.8	4885.2	4582.6	5139	5185	4518	3593	4478
	2. ENTHETIC "	74.7	51.5	61.4	73.5	93.8	93.2	94	91	93	91	97
	3. DIETIC "	113.6	97.6	106.0	116.4	132.8	115.6	117	115	110	108	128
	4. PARASITIC "	61.0	65.8	64.6	56.6	60.0	57.8	61	57	52	58	61
II.	1. DIATHETIC "	842.5	943.6	863.6	826.4	819.4	759.6	785	755	745	755	758
	2. TUBERCULAR "	3362.9	3655.0	3448.0	3367.6	3326.0	3018.0	3200	3101	3023	2941	2825
III.	DISEASES OF—											
	1. NERVOUS SYSTEM -	2807.9	2777.0	2758.0	2823.4	2859.2	2822.0	2867	2765	2743	2838	2897
	2. ORGANS OF CIRCULATION.	949.7	700.0	803.6	968.6	1080.0	1196.2	1134	1161	1183	1227	1276
	3. RESPIRATORY ORGANS.	3273.1	2769.0	3155.2	3400.2	3418.4	3613.8	3690	3623	3205	3691	3860
	4. DIGESTIVE ORGANS	1005.3	1039.0	1005.0	1003.6	1005.0	974.0	981	957	951	962	1019
	5. URINARY ORGANS -	272.3	190.6	227.0	270.6	320.2	353.2	337	338	343	363	380
	6. ORGANS OF GENERATION.	57.0	52.4	57.4	59.6	59.6	55.8	58	55	56	55	55
	7. ORGANS OF LOCOMOTION.	77.4	66.2	68.2	82.6	84.2	85.8	85	88	84	85	87
	8. INTEGUMENTARY SYSTEM.	57.0	50.4	50.0	59.0	60.6	64.8	64	62	57	62	79
IV.	1. DEV. DISEASES OF CHILDREN.	870.1	1335.0	995.4	656.4	680.0	683.6	667	672	695	688	696
	2. " ADULTS -	116.3	128.0	108.0	116.6	115.6	113.4	112	114	109	107	125
	3. " OLD PEOPLE	1373.7	1493.8	1431.0	1386.2	1318.6	1239.2	1297	1242	1175	1263	1219
	4. DIS. OF NUTRITION -	1191.4	697.0	1034.0	1403.8	1490.8	1331.2	1371	1349	1309	1307	1320
V.	1. ACCIDENT OR NEGLIGENCE.				677.0	696.9	657.8	646	662	663	652	667
	2. BATTLE - - -				†	†	†	†	†	†	†	†
	3. HOMICIDE - - -				19.2	20.2	17.2	17	17	17	18	17
	4. SUICIDE - - -	761.3	746.2	741.6	66.6	67.2	67.0	70	66	66	65	68
	5. EXECUTION - - -				.8	.5	.4	.3	.2	.4	.4	.8
	OTHER VIOLENT DEATHS NOT CLASSED.				6.0	12.6	9.2	12	7	8	9	10
	SUDDEN DEATHS, CAUSE UNASCERTAINED.	165.4	207.2	178.2	146.2	153.6	141.6	143	140	135	144	146
	CAUSES NOT SPECIFIED	†152.0	214.8	89.2	-	-	-	-	-	-	-	-

* The rates given in this Table for the various groups of years are the means of the calculated rates in the several years. Under some of the separate headings the means cannot be given for the entire period, as the classification in full detail has not been made during the whole 25 years. In a certain number of cases in each year the cause of death is not stated; in calculating the proportional numbers since 1853 these have been distributed ratably over all the causes in the Table.
 † Order 2, comprising Violent Deaths in Battle, is omitted, as inapplicable to the civil population. ‡ Average in 10 years.

TABLE 4.* (continued.)—Mean Annual Rate of Mortality in England from each CLASS of CAUSES and from each CAUSE of DEATH during the 25 Years 1850-74, and in each Quinquenniad of that Period; also the Rate of Mortality in the Years 1870, 1871, 1872, 1873, and 1874.

CLASSES.	CAUSES OF DEATH.	ANNUAL DEATHS to 1,000,000 LIVING.										
		25 Years 1850-74.	5 Years 1850-54.	5 Years 1855-59.	5 Years 1860-64.	5 Years 1865-69.	5 Years 1870-74.	Year 1870.	Year 1871.	Year 1872.	Year 1873.	Year 1874.
I.	ORDER 1.											
	1 Small-pox - - -	250.0	279.0	199.0	190.6	147.8	433.8	118	1024	833	102	92
	2 Measles - - -	428.2	406.0	412.0	478.2	451.8	392.8	339	411	373	319	522
	3 Scarlet Fever - - -				925.6	856.6	886.6	1461	822	521	567	1062
	4 Diphtheria - - -	1038.0	890.8	1103.6	264.2	145.2	117.6	121	112	94	109	152
	5 Quinsy - - -	16.1	22.4	24.2	16.6	11.0	6.2	6	6	5	7	7
	6 Croup - - -	240.6	225.2	281.0	279.4	230.6	186.8	193	183	159	185	214
	7 Whooping-cough - -	514.6	496.6	527.0	527.0	532.2	490.4	534	459	603	414	442
	8 { Typhus Fever - - - Enteric or Typhoid Fever - - - Simple Continued Fever - - -	866.2	995.0	897.6	846.6	934.4	381.2	392	375	81	71	378
							176.6	264	202	149	135	133
	9 Erysipelas - - -	97.7	111.6	104.6	87.0	84.2	101.0	96	99	78	88	144
	10 Puerperal Fev. (Metria)	59.9	54.0	55.2	54.2	56.2	80.0	67	65	61	75	132
	11 Carbuncle - - -	11.4	12.0	13.0	11.6	11.4	8.8	9	10	8	9	8
	12 Influenza - - -	53.6	86.6	94.2	45.0	27.0	15.2	28	15	12	11	10
	13 Dysentery - - -	67.2	120.6	77.2	56.6	48.2	33.6	37	35	36	31	29
	14 Diarrhœa - - -	890.6	887.4	838.6	704.6	1038.8	1003.6	1136	1069	969	940	904
	15 Cholera - - -	119.7	305.8	45.0	33.8	178.4	35.6	48	38	35	32	25
	16 Ague - - -	7.2	9.2	9.6	7.2	5.4	4.8	5	6	4	4	5
	17 Remittent Fever - -	15.5	35.2	21.0	12.6	4.2	4.6	7	6	4	3	3
	18 Rheumatism - - -	109.6	101.8	104.4	106.0	116.6	119.4	125	121	107	108	136
	19 Other Zymotic Diseases	†5.3	-	-	6.0	5.2	4.6	5	5	4	4	5
	ORDER 2.											
	1 Syphilis - - -	63.0	37.2	50.9	63.6	82.3	81.0	84	77	80	80	85
	2 Stricture of Urethra -	10.6	13.4	10.0	9.4	10.0	10.2	9	11	11	10	10
	3 Hydrophobia - - -	.9	.9	.4	.3	.9	1.8	1	3	2	1	2
	4 Glanders - - -	†	-	.1	.2	.6	.2	.2	.2	.3	.1	.2
	ORDER 3.											
	1 Privation - - -	3.6	3.8	3.6	3.6	3.8	3.4	4	4	3	3	3
	2 Want of Breast-milk -	51.5	33.0	46.0	53.8	68.0	56.4	63	55	53	50	61
	3 Purpura and Scurvy -	18.3	14.4	15.6	19.0	21.0	21.6	21	24	23	21	19
	4 Alcohol { a Del. Tremens b Intemperance	23.2	28.6	25.6	23.8	21.8	16.4	15	16	14	16	21
		17.0	17.8	15.2	16.2	18.2	17.8	14	16	17	18	24
	ORDER 4.											
	1 Thrush - - -	55.5	65.8	61.4	48.0	52.0	50.4	54	50	45	50	53
	2 Worms, &c. - - -	†6.8	-	3.2	8.6	8.0	7.4	7	7	7	8	8
II.	ORDER 1.											
	1 Gout - - -	15.6	12.4	13.2	13.4	18.2	20.8	21	20	20	20	23
	2 Dropsy - - -	385.1	549.4	450.8	370.0	326.4	229.0	261	241	225	218	200
	3 Cancer - - -	369.2	302.2	327.4	368.8	404.2	443.4	431	429	437	451	469
	4 Cancerum Oris (Noma)	7.2	6.0	9.0	8.4	7.4	5.0	5	6	6	3	5
	5 Mortification - - -	65.4	73.6	63.2	65.8	63.2	61.4	67	59	57	63	61
	ORDER 2.											
	1 Scrofula - - -	142.4	144.8	153.4	160.4	135.8	117.6	122	117	113	119	117
	2 Tabes Mesenterica -	282.6	264.8	261.4	272.2	315.6	299.2	310	297	299	296	294
	3 Phthisis - - -	2567.2	2811.2	2647.6	2566.4	2527.8	2282.8	2435	2364	2297	2214	2104
	4 Hydrocephalus - - -	370.7	434.2	385.6	368.6	346.8	318.4	333	323	314	312	310

* See note to page 236.

† Average in 15 years.

‡ Average in 20 years.

TABLE 4* (continued).—Mean Annual Rate of Mortality in England from each CLASS of CAUSES and from each CAUSE of DEATH during the 25 Years 1850-74, and in each Quinquenniad of that Period; also the Rate of Mortality in the Years 1870, 1871, 1872, 1873, and 1874.

CLASSES.	CAUSES OF DEATH.	ANNUAL DEATHS to 1,000,000 LIVING.										
		25 Years 1850-74.	5 Years 1850-54.	5 Years 1855-59.	5 Years 1860-64.	5 Years 1865-69.	5 Years 1870-74.	Year 1870.	Year 1871.	Year 1872.	Year 1873.	Year 1874.
III.	ORDER 1.											
	1 Cephalitis - - -	198.5	199.0	180.6	182.8	203.8	226.4	222	213	221	230	246
	2 Apoplexy - - -	477.8	454.2	447.4	468.6	495.0	523.8	521	509	515	527	547
	3 Paralysis - - -	486.3	440.2	465.4	493.8	505.8	526.0	523	519	507	546	535
	4 Insanity - - -	30.0	29.2	23.8	28.0	30.4	38.6	39	43	35	37	39
	5 Chorea - - -	3.2	3.6	3.0	3.2	3.4	2.8	4	3	2	2	3
	6 Epilepsy - - -	114.5	105.8	115.4	122.8	114.6	114.0	117	109	116	118	110
	7 Convulsions - - -	1265.8	1352.6	1311.2	1276.0	1247.4	1141.8	1192	1121	1109	1131	1156
	8 Brain Disease, &c.	231.8	192.4	211.2	248.2	258.8	248.6	249	248	233	247	261
	ORDER 2.											
	1 Pericarditis - - -	29.4	32.6	30.4	28.8	27.4	27.8	30	27	26	24	32
	2 Aneurism - - -	21.3	16.2	17.8	20.2	24.4	27.8	28	27	28	27	29
	3 Heart Disease, &c.	899.0	651.2	755.4	919.6	1028.2	1140.6	1076	1107	1129	1176	1215
	ORDER 3.											
	1 Laryngitis - - -	68.0	59.0	69.0	70.0	66.2	75.6	78	72	67	79	82
	2 Bronchitis - - -	1596.5	1016.4	1358.6	1658.2	1839.2	2110.0	2097	2112	1866	2216	2259
3 Pleurisy - - -	46.4	51.4	49.2	43.2	42.4	45.6	46	41	43	43	55	
4 Pneumonia - - -	1163.1	1239.0	1294.2	1199.2	1073.2	1010.2	1065	1008	886	988	1104	
5 Asthma - - -	203.2	258.2	238.0	201.2	171.6	147.0	175	156	130	144	130	
6 Lung Disease, &c.	195.9	145.0	146.2	237.4	225.8	225.4	229	234	213	221	230	
ORDER 4.												
1 Gastritis - - -	38.2	37.2	42.6	39.8	35.8	35.8	36	34	34	36	39	
2 Enteritis - - -	162.1	209.0	174.6	157.2	141.8	123.2	137	129	120	123	132	
3 Peritonitis - - -	77.9	72.4	75.0	79.2	76.6	86.2	82	79	81	86	103	
4 Ascites - - -	35.4	39.6	39.4	36.6	33.4	28.0	30	28	29	27	26	
5 Ulceration of Intestines	45.6	50.8	45.8	43.0	42.8	45.4	47	45	44	47	44	
6 Hernia - - -	42.7	41.2	43.8	41.4	43.0	44.0	44	45	44	44	43	
7 Ileus - - -	59.1	63.8	60.2	57.4	56.4	57.6	57	55	56	59	61	
8 Intussusception - - -	14.0	13.6	13.4	13.2	13.6	16.0	16	15	15	15	19	
9 Stricture of Intestines -	13.7	14.2	14.0	14.0	13.4	13.0	12	13	14	13	13	
10 Fistula - - -	5.0	5.8	5.0	5.2	4.4	4.8	5	5	5	5	4	
11 Stomach Disease, &c.	123.8	118.6	132.2	138.6	137.0	117.4	127	118	111	115	116	
12 Pancreas Disease, &c.	.7	.6	.8	.8	.7	.7	.6	1	.6	.4	1	
13 Hepatitis - - -	69.7	83.6	75.2	67.8	64.8	57.2	60	56	55	55	60	
14 Jaundice - - -	69.9	69.6	69.6	68.0	72.4	69.8	70	70	71	69	69	
15 Liver Disease, &c.	233.8	215.2	210.2	237.6	265.1	265.9	253	260	266	265	285	
16 Spleen Disease, &c.	3.7	3.8	3.2	3.8	3.8	4.0	4	4	5	3	4	
ORDER 5.												
1 Nephritis - - -	18.3	11.0	14.0	15.2	21.2	30.2	30	28	26	30	37	
2 Ischuria - - -	5.5	5.8	5.2	5.6	5.8	5.0	5	6	5	5	4	
3 Bright's Disease (Nephria).	78.5	32.0	53.6	78.4	100.6	127.8	117	117	127	136	142	
4 Diabetes - - -	23.7	23.0	24.8	28.4	32.2	35.2	33	36	34	36	37	
5 Calculus (Stone) - - -	10.0	12.0	11.0	8.8	9.2	9.2	9	9	9	10	9	
6 Cystitis - - -	16.8	13.0	14.0	17.0	19.0	21.0	19	19	21	23	23	
7 Kidney Disease, &c.	114.5	93.8	104.4	117.2	132.2	124.8	124	123	121	128	128	
ORDER 6.												
1 Ovarian Dropsy - - -	11.1	11.4	12.0	12.8	10.6	8.8	10	9	9	9	7	
2 Uterus, &c. Disease - - -	45.9	41.0	45.4	46.8	49.0	47.0	48	46	47	46	48	
ORDER 7.												
1 Synovitis (Arthritis) - -	4.0	4.2	3.8	3.6	3.8	4.4	5	4	4	4	5	
2 Joint Disease, &c.	73.4	62.0	64.4	79.0	80.4	81.4	80	84	80	81	82	

* See note to page 236.

TABLE 4* (continued).—Mean Annual Rate of Mortality in England from each CLASS of CAUSES and from each CAUSE of DEATH during the 20 Years 1850-74, and in each Quinquenniad of that Period; also the Rate of Mortality in the Years 1870, 1871, 1872, 1873, and 1874.

CLASSES.	CAUSES OF DEATH.	ANNUAL DEATHS to 1,000,000 LIVING.										
		25 Years 1850-74.	5 Years 1850-54.	5 Years 1855-59.	5 Years 1860-64.	5 Years 1865-69.	5 Years 1870-74.	Year 1870.	Year 1871.	Year 1872.	Year 1873.	Year 1874.
IV.	ORDER 8.											
	1 Phlegmon - - -	23.0	20.2	18.2	23.6	23.4	29.4	30	27	23	27	40
	2 Ulcer - - -	18.3	18.4	16.4	19.8	19.8	17.0	16	17	16	17	19
	3 Skin Disease, &c.	15.7	11.8	15.4	15.6	17.4	18.4	18	18	18	18	20
	ORDER 1.											
	1 Premature Birth - - -	604.9	1043.6	737.0	392.0	416.0	436.0	413	428	451	440	448
	2 Cyanosis - - -	20.7	14.0	18.6	21.8	24.0	25.0	27	25	25	24	24
	3 Spina Bifida - - -	17.4	13.2	16.0	19.0	19.2	19.4	19	17	20	21	20
	4 Other Malformations - -	20.5	20.0	19.4	21.2	22.0	19.8	20	20	20	19	20
	5 Teething - - -	206.6	244.2	204.4	202.4	198.8	183.4	188	182	179	184	184
	ORDER 2.											
	1 Paramenia - - -	4.3	5.4	3.0	3.2	5.2	4.6	5	5	4	4	5
	2 Childbirth (see Metria)	112.0	122.6	105.0	113.4	110.4	108.8	107	109	105	103	120
	ORDER 3.											
	1 Old Age - - -	1373.7	1493.8	1431.0	1386.2	1318.6	1239.2	1297	1242	1175	1263	1219
	ORDER 4.											
1 Atrophy and Debility	1191.4	697.0	1034.0	1403.8	1490.8	1331.2	1371	1349	1309	1307	1320	
ORDER 1. (ACCIDENT OR NEGLIGENCE.)												
1 Fractures and Contusions.				285.8	310.3	304.8	289	303	307	312	314	
2 Gunshot Wounds - - -				5.6	5.4	4.4	6	4	3	5	4	
3 Cut, Stab - - -				3.8	5.0	4.6	4	5	5	3	6	
4 Burns and Scalds - - -				146.8	122.2	107.0	116	116	96	98	109	
5 Poison - - -				13.0	12.8	11.4	11	11	12	10	13	
6 Drowning - - -				121.8	131.0	117.0	112	115	131	116	111	
7 Suffocation - - -				56.6	60.8	66.6	64	67	68	67	67	
8 Otherwise - - -				43.6	49.4	42.0	44	41	41	41	43	
ORDER 3. (HOMICIDE.)												
1 Murder and Manslaughter.				19.2	20.2	17.2	17	17	17	18	17	
ORDER 4. (SUICIDE.)												
1 Gunshot Wounds - - -	761.3	746.2	741.6									
2 Cut, Stab - - -				3.0	3.4	3.0	3	3	2	3	4	
3 Poison - - -				12.6	13.4	13.6	14	13	13	13	15	
4 Drowning - - -				6.6	6.4	6.2	7	6	6	6	6	
5 Hanging - - -				10.8	11.8	13.8	14	14	15	14	12	
6 Otherwise - - -				29.0	25.8	24.8	26	24	25	24	25	
ORDER 5. (EXECUTION.)												
1 Hanging - - -				.8	.5	.4	.3	.2	.4	.4	.8	
Other Violent Deaths (not classed).				6.0	12.6	9.2	12	7	8	9	10	
Sudden Deaths (Cause unascertained).	165.4	207.2	178.2	146.2	153.6	141.6	143	140	135	144	146	
Causes not specified or ill-defined.	†152.0	214.8	89.2	-	-	-	-	-	-	-	-	

* See note to page 236.

† Average in 10 years.

TABLE 5.—Causes of Death in England in the Year 1874, arranged in the order of their fatality.

CAUSES OF DEATH.	Number of Deaths registered in the Year 1874.	Proportional Number from each Cause to 1,000,000 Deaths from All Causes.*	CAUSES OF DEATH.	Number of Deaths registered in the Year 1874.	Proportional Number from each Cause to 1,000,000 Deaths from All Causes.*
Bronchitis - - - -	53,022	101,422	Phlegmon - - - -	942	1,802
Phthisis - - - -	49,379	94,422	Gastritis - - - -	923	1,766
Atrophy and Debility - -	30,995	59,288	Insanity - - - -	906	1,733
Old Age - - - -	28,604	54,715	Diabetes - - - -	882	1,687
Heart Disease - - - -	28,513	54,541	Nephritis - - - -	884	1,653
Convulsions - - - -	27,139	51,912	Pericarditis - - - -	758	1,450
Pneumonia - - - -	25,927	49,594	Aneurism - - - -	685	1,310
Scarlet Fever - - - -	24,922	47,761	Dysentery - - - -	684	1,308
Diarrhoea - - - -	21,204	40,559	Ascites - - - -	600	1,143
Apoplexy - - - -	12,848	24,576	Hanging (Suicide) - -	597	1,142
Paralysis - - - -	12,572	24,048	Cholera (Simple) - - -	596	1,140
Measles - - - -	12,255	23,442	Cyanosis - - - -	573	1,066
Cancer - - - -	11,011	21,062	Intemperance - - - -	568	1,088
Premature Birth - - - -	10,527	20,136	Gout - - - -	542	1,037
Whooping-cough - - - -	10,362	19,821	Cystitis - - - -	531	1,016
Enteric Fever - - - -	8,861	16,949	Delirium Tremens - - -	485	928
Fractures and Contusions } (Accident) - - - -	7,374	14,105	Malformations (not classed) -	465	890
Hydrocephalus - - - -	7,286	13,937	Skin Disease - - - -	459	873
Tabes Mesenterica - - - -	6,911	13,220	Ulcer - - - -	458	876
Liver Disease - - - -	6,639	12,795	Spina Bifida - - - -	458	876
Brain Disease - - - -	6,129	11,724	Intussusception - - - -	454	868
Cephalitis - - - -	5,763	11,024	Purpura and Scurvy - - -	440	842
Lung Disease - - - -	5,397	10,323	Murder and Manslaughter -	409	782
Croup - - - -	5,010	9,588	Cut, Stab (Suicide) - - -	340	650
Dropsy - - - -	4,688	8,967	Stricture of Intestines - -	312	597
Teething - - - -	4,317	8,258	Poison (Accident) - - - -	312	597
Diphtheria - - - -	3,560	6,810	Drowning (Suicide) - - -	280	536
Sudden Deaths - - - -	3,421	6,544	Influenza - - - -	245	469
Erysipelas - - - -	3,387	6,479	Violent Deaths (not classed)	234	448
Bright's Disease (Nephria) -	3,312	6,393	Stricture of Urethra - - -	228	436
Rheumatism - - - -	3,203	6,127	Calculus (Stone) - - - -	207	396
Simple Continued Fever - -	3,112	5,953	Carbuncle - - - -	198	379
Puerperal Fever (Metria) - -	3,108	5,945	Worms - - - -	188	360
Enteritis - - - -	3,091	5,912	Quinsy - - - -	173	331
Asthma - - - -	3,053	5,840	Ovarian Dropsy - - - -	168	321
Kidney Disease - - - -	2,999	5,736	Poison (Suicide) - - - -	149	285
Childbirth - - - -	2,819	5,392	Cut, Stab (Accident) - - -	141	270
Scrofula - - - -	2,752	5,264	Suicide (not classed) - - -	133	254
Stomach Disease - - - -	2,728	5,218	Zymotic Diseases (not classed)	121	231
Drowning (Accident) - - - -	2,611	4,994	Paramenia - - - -	116	222
Epilepsy - - - -	2,587	4,948	Ague - - - -	114	218
Burns and Scalds (Accident) -	2,559	4,895	Cancerum Oris (Noma) - - -	111	212
Peritonitis - - - -	2,407	4,604	Synovitis (Arthritis) - - -	111	212
Small-pox - - - -	2,162	4,136	Ischuria - - - -	104	199
Syphilis - - - -	1,997	3,820	Fistula - - - -	101	193
Joint Disease - - - -	1,928	3,688	Gunshot Wounds (Accident) -	98	187
Laryngitis - - - -	1,926	3,684	Gunshot Wounds (Suicide) -	93	178
Typhus Fever - - - -	1,762	3,370	Spleen Disease - - - -	81	155
Jaundice - - - -	1,628	3,114	Remittent Fever - - - -	79	151
Suffocation (Accident) - - - -	1,560	2,984	Privation - - - -	73	140
Want of Breast-milk - - - -	1,440	2,754	Chorea - - - -	70	134
Mortification - - - -	1,439	2,753	Hydrophobia - - - -	61	116
Ileus - - - -	1,424	2,724	Hanging (Execution) - - -	18	34
Hepatitis - - - -	1,419	2,714	Pancreas Disease - - - -	11	21
Pleurisy - - - -	1,287	2,462	Glanders - - - -	4	8
Thrush - - - -	1,234	2,360			
Uterus Disease - - - -	1,123	2,148			
Ulceration of Intestines - -	1,037	1,984			
Hernia - - - -	1,012	1,936			
Accident (not classed) - - - -	1,012	1,936			

* The causes of 3,845 deaths in 1874 were not specified. In calculating the proportional numbers in this column these deaths have been distributed proportionally among the specified causes.

TABLE 6.—ENGLAND. Death-rates per 1000 Persons living, from certain Causes, in each of the Registration Counties in the Year 1874.

REGISTRATION COUNTIES.	Estimated Population in the middle of 1874.*	ANNUAL DEATH-RATE PER 1000 PERSONS LIVING FROM CERTAIN DISEASES.											
		ALL CAUSES.	Seven Zymotic Diseases.	Cancer.	Phthisis.	Scrofula, Tabes Mesenterica, and Hydrocephalus.	Brain Diseases.	Heart Diseases and Dropsy.	Diseases of Respiratory Organs.	Diseases of Digestive Organs.	Diseases of Urinary Organs.	Violent Deaths.	Other Causes.
ENGLAND AND WALES	23,648,609	22.3	3.73	0.46	2.09	0.72	2.88	1.46	3.83	1.01	0.38	0.76	4.95
Div. I.													
London - - - -	3,400,701	22.6	3.33	0.57	2.51	0.91	2.68	1.43	4.75	1.00	0.48	0.80	4.11
Div. II.													
Surrey (extra-metrop.) - - -	407,061	16.2	2.06	0.44	1.83	0.57	2.25	1.33	2.42	0.85	0.44	0.50	3.55
Kent (extra-metrop.) - - -	658,849	17.6	2.09	0.48	1.73	0.55	2.23	1.45	2.95	0.99	0.37	0.63	4.17
Sussex - - - -	440,004	17.7	1.99	0.60	2.20	0.58	2.19	1.53	2.75	0.99	0.42	0.53	3.89
Hampshire - - - -	546,273	18.0	2.13	0.47	2.06	0.50	2.31	1.56	2.91	0.94	0.39	0.53	4.20
Berkshire - - - -	233,334	17.7	1.62	0.54	1.98	0.57	2.35	1.75	2.65	0.92	0.45	0.67	4.32
Div. III.													
Middlesex (extra-met.) - - -	296,313	18.1	2.39	0.39	1.87	0.64	2.67	1.43	3.19	0.96	0.35	0.61	3.60
Hertfordshire - - - -	200,474	17.7	1.97	0.52	1.86	0.43	2.67	1.68	2.42	0.84	0.31	0.43	4.58
Buckinghamshire - - - -	157,579	17.9	1.70	0.43	1.55	0.47	2.12	1.37	2.81	0.93	0.37	0.51	5.04
Oxfordshire - - - -	180,639	18.5	1.72	0.50	1.89	0.61	2.19	1.46	2.59	0.99	0.43	0.48	5.60
Northamptonshire - - - -	253,996	19.9	2.56	0.53	1.76	0.71	2.33	1.55	3.20	1.02	0.34	0.60	5.33
Huntingdonshire - - - -	57,677	18.0	2.36	0.71	1.82	0.49	1.68	1.58	2.81	0.81	0.35	0.43	4.98
Bedfordshire - - - -	155,267	19.3	2.61	0.56	2.11	0.53	2.46	1.40	3.02	0.99	0.25	0.44	4.96
Cambridgeshire - - - -	195,491	17.7	1.85	0.67	1.72	0.49	1.88	1.43	2.49	1.08	0.36	0.59	5.17
Div. IV.													
Essex - - - -	462,661	18.3	2.27	0.51	1.83	0.61	2.53	1.48	3.01	0.74	0.35	0.63	4.88
Suffolk - - - -	351,020	18.0	2.25	0.49	1.85	0.50	2.12	1.40	2.72	0.91	0.34	0.47	4.96
Norfolk - - - -	431,540	19.6	2.19	0.54	1.79	0.44	2.41	1.55	2.57	0.91	0.41	0.57	6.24
Div. V.													
Wiltshire - - - -	247,411	19.3	1.91	0.48	1.72	0.55	2.67	1.95	3.50	1.10	0.35	0.61	4.43
Dorsetshire - - - -	191,205	17.0	2.09	0.44	1.53	0.50	2.19	1.70	2.96	0.85	0.36	0.55	3.85
Devonshire - - - -	611,474	18.8	2.40	0.59	1.99	0.53	2.41	1.62	3.12	0.82	0.32	0.57	4.40
Cornwall - - - -	356,155	19.8	2.44	0.50	2.15	0.61	2.20	1.22	2.70	0.95	0.32	0.58	6.10
Somersetshire - - - -	488,931	18.9	2.34	0.46	1.65	0.52	2.35	1.77	3.19	1.04	0.39	0.63	4.54
Div. VI.													
Gloucestershire - - - -	504,265	19.8	2.08	0.50	1.72	0.59	2.63	1.61	3.64	0.93	0.40	0.71	4.98
Herefordshire - - - -	121,340	18.6	1.65	0.63	1.48	0.39	2.68	1.76	2.99	0.98	0.28	0.55	5.18
Shropshire - - - -	269,094	18.5	2.01	0.51	1.56	0.43	2.39	1.41	3.08	1.02	0.31	0.73	5.02
Staffordshire - - - -	915,537	23.1	3.72	0.39	1.58	0.66	3.11	1.29	4.21	1.01	0.32	0.79	6.06
Worcestershire - - - -	350,801	19.2	2.99	0.51	1.48	0.41	2.35	1.44	3.04	0.88	0.40	0.64	5.03
Warwickshire - - - -	654,514	24.5	5.98	0.46	2.02	0.59	2.45	1.32	4.17	0.99	0.42	0.94	5.15
Div. VII.													
Leicestershire - - - -	286,177	22.0	2.91	0.57	1.79	0.65	3.22	1.59	3.34	1.20	0.38	0.57	5.74
Rutlandshire - - - -	23,347	15.4	1.63	0.30	0.86	0.21	1.88	1.07	2.61	1.07	0.21	0.64	4.93
Lincolnshire - - - -	436,007	19.1	3.00	0.55	1.74	0.47	2.75	1.44	2.79	0.92	0.32	0.57	4.52
Nottinghamshire - - - -	366,212	23.2	3.65	0.52	2.11	0.74	3.22	1.68	3.74	0.97	0.34	0.73	5.52
Derbyshire - - - -	335,387	22.0	3.37	0.35	1.89	0.66	3.51	1.56	3.49	1.09	0.32	0.78	5.01
Div. VIII.													
Cheshire - - - -	562,484	22.2	3.63	0.47	2.00	0.75	3.18	1.45	3.76	1.11	0.37	0.83	4.70
Lancashire - - - -	2,985,501	28.3	6.33	0.38	2.52	0.83	3.34	1.45	5.34	1.14	0.40	0.99	5.56
Div. IX.													
West Riding - - - -	1,972,819	25.1	5.07	0.38	2.14	0.84	3.53	1.43	4.54	1.07	0.34	0.72	5.07
East Riding - - - -	317,901	22.4	3.65	0.48	2.12	0.67	3.48	1.41	3.21	1.15	0.37	0.81	5.01
North Riding - - - -	243,003	20.3	3.17	0.48	1.67	0.59	2.69	1.54	2.98	1.11	0.43	0.77	4.91
Div. X.													
Durham - - - -	821,714	26.4	5.98	0.29	1.89	1.40	3.46	1.36	3.54	1.11	0.31	1.03	6.03
Northumberland - - - -	401,854	25.7	5.19	0.43	2.32	1.17	3.41	1.69	3.36	1.26	0.28	1.10	5.51
Cumberland - - - -	225,279	24.3	5.16	0.43	2.28	0.70	2.40	1.66	3.28	1.10	0.41	1.05	5.79
Westmorland - - - -	66,529	18.2	2.28	0.32	1.67	0.66	2.51	1.37	2.50	0.96	0.38	0.60	4.98
Div. XI.													
Monmouthshire - - - -	227,572	24.2	4.53	0.60	1.89	0.63	3.04	1.47	4.68	1.14	0.34	0.81	5.04
South Wales - - - -													

TABLE 7.—Deaths in each of the Counties of England from Scarlet Fever in each of the 18 Years 1857-1874.

REGISTRATION COUNTIES.		DEATHS FROM SCARLET FEVER. (See Note.)																	
		1857	1858	1859	1860	1861	1862	1863	1864	1865	1866	1867	1868	1869	1870	1871	1872	1873	1874
ENGLAND.		14,229	30,317	19,907	9,681	9,077	14,834	30,475	29,700	17,700	11,685	12,300	21,912	27,641	32,543	18,567	11,922	13,144	24,922
I.—LONDON		1,599	4,184	3,481	2,017	2,381	3,492	4,955	3,244	2,179	1,892	1,451	2,916	5,841	6,040	1,902	918	645	2,648
II.—SOUTH EASTERN COUNTIES.																			
No.	Surrey (extra-metropol.)	89	355	188	79	53	151	390	314	246	71	67	276	351	523	220	81	36	57
1	Kent (extra-metropol.)	218	651	423	259	287	297	687	709	374	130	157	399	333	965	597	141	70	158
2	Sussex	173	514	283	85	40	71	363	483	251	138	43	135	237	495	275	132	29	20
3	Hampshire	311	444	350	83	24	368	744	238	337	184	81	250	594	708	323	82	28	68
4	Berkshire	122	353	93	18	17	70	153	151	236	32	25	103	361	291	115	29	8	26
III.—SOUTH MIDLAND COUNTIES.																			
No.	Middlesex (extra-metro.)	59	134	157	131	55	139	345	160	85	50	71	183	227	471	156	31	24	52
6	Hertfordshire	22	84	90	40	26	110	411	377	92	33	35	54	59	222	208	64	10	57
7	Buckinghamshire	23	95	93	43	99	166	39	114	79	13	9	55	208	289	174	78	10	57
8	Oxfordshire	110	393	114	18	19	24	153	244	90	10	36	90	83	233	204	62	58	16
9	Northamptonshire	35	158	171	39	10	53	377	803	143	25	28	59	101	573	226	88	27	65
10	Huntingdonshire	98	33	26	17	5	10	146	61	43	29	8	7	10	3	54	13	2	35
11	Bedfordshire	25	95	53	26	11	30	153	382	113	32	38	63	32	151	148	98	15	66
12	Cambridgeshire	53	86	85	83	25	55	366	245	50	22	43	55	59	165	121	31	10	22
IV.—EASTERN COUNTIES.																			
No.	Essex	162	355	178	101	83	388	775	281	165	105	67	162	322	679	444	126	38	120
14	Suffolk	164	376	119	76	41	108	820	353	86	40	206	140	79	167	337	96	31	114
15	Norfolk	534	738	281	81	113	202	235	568	320	128	155	360	242	520	356	47	100	364
V.—SOUTH WESTERN COUNTIES.																			
No.	Wiltshire	75	239	222	60	40	116	292	260	251	54	56	53	85	234	133	143	79	19
17	Dorsetshire	256	375	179	61	6	42	147	138	112	295	81	64	86	284	137	55	28	165
18	Devonshire	527	891	391	73	75	353	778	1,054	321	77	36	60	155	646	415	106	76	72
19	Cornwall	291	425	234	153	162	165	995	572	97	13	33	254	161	687	392	161	45	50
20	Somersetshire	159	479	393	91	49	126	773	1,013	355	73	29	55	154	534	422	172	104	173
VI.—WEST MIDLAND COUNTIES.																			
No.	Gloucestershire	257	731	553	142	102	111	1,162	453	142	95	68	113	399	1,456	320	85	50	75
22	Herefordshire	73	106	34	19	7	12	39	206	48	8	1	21	148	210	49	9	18	25
23	Shropshire	156	196	127	148	135	234	223	147	122	37	44	142	182	181	158	237	144	119
24	Staffordshire	641	1,194	1,186	303	194	807	1,147	1,134	907	703	670	943	1,198	1,064	1,146	1,039	1,106	649
25	Worcestershire	105	227	316	138	40	81	353	584	193	111	101	463	697	344	152	140	223	303
26	Warwickshire	357	1,185	518	170	96	354	676	966	475	477	782	967	652	564	267	492	749	1270
VII.—NORTH MIDLAND COUNTIES.																			
No.	Leicestershire	215	452	204	34	15	33	524	164	66	59	70	54	95	388	274	51	69	92
28	Rutlandshire	3	45	30	3	2	8	54	48	22	—	2	8	7	52	54	13	—	—
29	Lincolnshire	124	651	200	123	139	193	495	662	415	82	60	107	241	508	335	157	253	529
30	Nottinghamshire	76	752	414	76	50	68	123	467	389	76	35	257	721	534	144	58	53	385
31	Derbyshire	276	622	376	60	31	50	179	381	150	75	63	543	658	385	244	119	315	368
VIII.—NORTH WESTERN COUNTIES.																			
No.	Cheshire	650	568	390	229	192	400	952	393	300	553	475	775	544	460	553	463	261	536
33	Lancashire	2,761	6,226	2,337	1,143	1,259	2,793	4,580	4,854	3,634	3,150	3,115	4,445	4,690	3,702	2,743	2,887	3,640	6,404
IX.—YORKSHIRE.																			
No.	West Riding	1,405	2,931	2,962	1,192	475	963	2,213	3,135	2,273	870	630	1,676	2,870	3,718	1,878	1,080	1,652	3,779
35	East Riding (with York)	231	250	89	133	275	204	638	470	131	56	72	307	505	493	157	72	82	263
36	North Riding	64	166	74	46	90	241	316	179	33	28	86	219	468	360	140	54	24	256
X.—NORTHERN COUNTIES.																			
No.	Durham	453	417	458	533	1,015	861	1,216	403	179	233	1,293	2,678	1,512	983	802	684	942	1,942
38	Northumberland	303	334	164	480	768	356	235	140	61	553	974	1,082	594	254	150	249	893	943
39	Cumberland	74	207	213	163	150	116	191	110	94	152	415	359	125	182	263	367	132	501
40	Westmorland	14	12	6	10	18	54	34	33	8	2	68	65	20	20	14	8	11	45
XI.—MONMOUTHSHIRE AND WALES.																			
No.	Monmouthshire	33	233	277	161	43	21	248	773	257	55	53	138	251	335	206	119	107	221
42	South Wales	349	798	1,014	449	181	127	501	1,990	1,538	277	75	285	804	1,370	838	538	565	1,388
43	North Wales	499	557	361	287	179	211	274	244	238	537	393	472	480	200	271	247	387	405

NOTE.—In the years 1857 and 1858 the above numbers include the deaths from diphtheria and cynanche maligna. In the year 1859 they include those from cynanche maligna; and in the years 1860 to 1874 the numbers relate only to scarlet fever.

TABLE 8.—Deaths in England from Fever, at several groups of Ages, in each of the 15 Years 1860-74.

AGES.	1860.	1861.	1862.	1863.	1864.	1865.	1866.	1867.	1868.	1869.	1870.	1871.	1872.	1873.	1874.
ALL AGES	13,012	15,440	13,721	13,017	20,106	23,034	21,104	16,862	19,701	18,390	17,910	15,790	14,020	13,553	13,735
Under 5 Years	2900	3323	3787	3323	3800	4023	3654	3224	3600	3396	3388	2991	2594	2544	2458
5—	1783	2116	2232	2344	2399	2625	2594	2192	2348	2253	2218	1930	1837	1805	1697
10—	1176	1402	1500	1416	1558	1887	1852	1504	1748	1625	1872	1465	1406	1362	1231
15—	2229	2817	3092	2797	3075	3801	3588	3095	3611	3224	3129	2911	2875	2722	2748
25—	1262	1613	1928	1858	2291	2731	2332	1815	2372	2140	1997	1840	1567	1639	1720
35—	1035	1218	1761	1686	2133	2588	2237	1548	1880	1731	1649	1403	1161	1120	1254
45—	845	956	1511	1456	1823	2155	1928	1290	1584	1539	1480	1240	1003	926	1043
55—	807	863	1437	1290	1562	1700	1514	1075	1303	1260	1237	995	820	744	825
65—	657	775	1026	911	1027	1057	947	803	894	892	911	760	536	514	559
75 & upwards	318	352	447	436	435	467	408	316	361	330	329	255	221	177	200

TABLE 9.—Deaths from Fever—Typhus, Enteric or Typhoid, and Simple Continued Fever—in England to 10,000 Persons living, and Proportional Number to 1000 Deaths, in the 25 Years 1850-74.

YEARS.	Number of Deaths registered.	Deaths to 10,000 Persons living.*	Proportional Number to 1000 Deaths.
1850	15,374	8.66	43
1851	17,930	10.15	46
1852	18,641	10.41	47
1853	18,554	10.25	45
1854	18,893	10.28	44
1855	16,470	8.89	39
1856	16,182	8.60	42
1857	19,016	9.97	46
1858	17,883	9.28	40
1859	15,877	8.14	36
1860	13,012	6.63	31
1861	15,440	7.76	36
1862	13,721	9.31	43
1863	13,017	8.86	38
1864	20,106	9.77	41
1865	23,034	11.09	47
1866	21,104	10.05	43
1867	16,862	7.95	36
1868	19,701	9.17	41
1869	18,390	8.46	37
1870	17,910		

TABLE 10.—Deaths from Privation in the 10 Years 1865-74, distinguishing LOCALITIES, SEXES, and AGES.

DEATHS IN EACH OF THE 11 REGISTRATION DIVISIONS.																							
		1865.		1866.		1867.		1868.		1869.		1870.		1871.		1872.		1873.		1874.		Average Number in the 10 Years 1865-74.	
		Males.	Females.	Males.	Females.	Males.	Females.	Males.	Females.	Males.	Females.	Males.	Females.	Males.	Females.	Males.	Females.	Males.	Females.	Males.	Females.	Males.	Females.
England and Wales		45	29	40	34	63	46	61	35	30	22	51	34	59	34	37	27	45	26	47	26	47.8	31.3
DIVISIONS.																							
I. LONDON		7	10	12	15	27	19	29	15	6	9	20	8	22	13	11	8	10	11	14	4	15.8	11.2
II. SOUTH EASTERN		5	-	3	3	2	-	5	2	5	1	6	1	5	3	2	-	4	1	2	2	3.9	1.3
III. SOUTH MIDLAND		2	-	1	-	1	-	2	1	1	2	2	1	3	-	3	-	1	1	1	3	1.7	.8
IV. EASTERN		2	2	1	-	1	-	1	1	2	-	-	-	1	4	3	1	-	2	-	9	1.2	
V. SOUTH WESTERN		1	-	1	-	-	1	3	2	1	1	2	-	4	3	1	2	-	1	2	1	1.5	1.1
VI. WEST MIDLAND		8	1	3	4	11	6	7	2	1	1	4	5	3	1	-	3	3	2	3	3	4.3	2.8
VII. NORTH MIDLAND		2	3	4	3	3	3	2	1	3	2	4	4	4	1	2	1	1	-	1	2	2.6	2.0
VIII. NORTH WESTERN		12	7	5	7	9	9	10	8	6	2	8	9	10	7	9	6	11	7	10	5	9.0	6.7
IX. YORK		5	2	5	2	4	2	3	2	2	2	4	-	5	2	4	1	4	2	1	-	3.7	1.5
X. NORTHERN		1	4	2	-	2	5	-	3	-	1	4	3	2	1	1	5	-	9	3	2.7	1.9	
XI. WELSH		-	-	3	-	3	1	-	1	1	-	-	2	-	2	3	1	3	-	4	1	1.7	.8
ENGLAND AND WALES.																							
All Ages		45	29	40	34	63	46	61	35	30	22	51	34	59	34	37	27	45	26	47	26	47.8	31.3
Under 1		-	-	2	1	1	1	-	1	2	1	-	-	1	1	-	-	-	-	-	-	.6	.5
1		1	3	1	2	1	1	-	1	-	1	-	2	1	-	-	-	-	-	-	-	.5	.9
2		-	-	1	-	2	-	-	-	-	-	-	-	-	-	1	1	-	-	-	-	.4	.2
3		-	-	-	-	-	1	-	1	2	-	-	1	-	-	-	-	-	-	-	-	.2	.3
4		-	-	-	-	-	-	-	1	-	-	-	-	-	-	-	-	-	-	1	-	-	.2
Under 5		1	3	4	3	4	3	-	5	4	2	-	1	3	2	-	1	1	-	-	1	1.7	2.1
5		1	-	1	-	2	2	3	-	-	1	-	-	1	1	1	3	2	1	1	1	1.2	.8
10		-	1	-	-	-	-	1	-	-	1	-	1	2	1	-	1	-	-	-	-	.4	.4
15		-	-	2	-	4	-	3	-	-	1	-	-	-	-	-	-	-	1	-	-	.9	.2
20		2	-	1	1	1	-	1	1	1	-	2	1	-	-	1	1	2	3	-	1.1	.8	
25		2	1	4	1	4	4	2	2	1	2	4	3	7	5	1	2	-	-	3	2	2.8	2.2
35		6	9	4	6	7	5	10	5	7	2	9	5	14	4	4	6	5	3	7	3	7.3	4.8
45		13	5	6	9	13	11	15	12	5	4	6	9	8	8	12	5	6	6	9	6	9.3	7.5
55		9	7	7	3	15	7	15	3	5	4	17	8	12	5	9	4	13	4	12	8	11.4	5.3
65		7	1	8	10	9	7	11	4	7	4	12	4	8	3	7	6	13	6	10	2	9.2	4.7
75		4	2	3	1	4	6	1	2	-	-	2	2	5	4	2	1	2	2	2	2	2.5	2.2
85		-	-	-	-	-	1	-	-	-	1	-	-	-	-	-	-	-	-	-	-	-	.3
95 and upwards		-	-	-	-	-	-	-	-	-	-	-	-	-	-	-	-	-	-	-	-	-	-

TABLE 11.—Deaths in England in 1874 of Women after Childbearing classed under various Diseases, and neither referred to Childbirth nor to Metria in the Abstracts.

CAUSES OF DEATH.	ALL AGES.	AGES.				
		15-	20-	25-	35-	45 and upwards.
TOTAL	881	33	178	387	272	11
CLASS I.						
Small-pox	36	1	11	16	8	-
Measles	5	-	2	3	-	-
Scarlet Fever	71	5	19	35	12	-
Diphtheria	3	-	1	-	2	-
Quinsy	2	-	-	2	-	-
Typhus Fever	8	-	3	2	3	-
Enteric or Typhoid Fever	60	1	17	29	13	-
Simple Continued Fever	10	-	2	3	5	-
Erysipelas	22	1	5	10	6	-
Dysentery	3	1	-	1	1	-
Diarrhoea	33	2	11	13	6	1
Cholera	4	-	1	2	1	-
Ague	1	-	-	-	1	-
Rheumatism	22	1	5	8	8	-
Syphilis	3	-	1	2	-	-
CLASS II.						
Dropsy	3	-	1	1	1	-
Cancer	4	-	-	1	3	-
Phthisis	145	4	27	72	39	3
CLASS III.						
Cephalitis	4	-	-	2	2	-
Apoplexy	15	-	6	6	3	-
Paralysis	5	1	-	3	1	-
Chorea	1	-	1	-	-	-
Epilepsy	8	1	3	2	2	-
Brain Disease	2	-	-	1	1	-
Pericarditis	3	-	-	2	1	-
Heart Disease	109	3	12	42	50	2
Laryngitis	5	-	1	2	2	-
Bronchitis	68	1	7	28	32	-
Pleurisy	9	-	1	3	5	-
Pneumonia	122	6	17	59	36	4
Asthma	4	-	-	1	3	-
Lung Disease	13	-	5	4	3	1
Gastritis	3	2	-	1	-	-
Enteritis	4	-	2	1	1	-
Ascites	1	-	-	1	-	-
Ulceration of Intestines	4	-	2	-	2	-
Ileus	2	-	-	2	-	-
Intussusception	1	-	-	-	1	-
Hepatitis	2	-	2	-	-	-
Jaundice	5	-	1	1	3	-
Liver Disease	12	-	1	6	5	-
Nephritis	2	-	1	1	-	-
Bright's Disease (Nephria)	29	1	9	14	5	-
Cystitis	1	-	-	1	-	-
Kidney Disease	10	2	1	3	4	-
Joint Disease	2	-	-	1	1	-

TABLE 12.—Deaths in England in 1874 of Women who were returned as pregnant, referred to various Diseases in the Abstracts.

CAUSES OF DEATH.	ALL AGES	AGES.				
		15—	20—	25—	35—	45 and upwds.
TOTAL - - - -	32	-	5	18	9	-
CLASS I.						
Scarlet Fever - - -	1	-	-	1	-	-
CLASS II.						
Cancer - - - - -	2	-	1	1	-	-
Phthisis - - - - -	2	-	-	2	-	-
CLASS III.						
Apoplexy - - - - -	2	-	-	1	1	-
Epilepsy - - - - -	2	-	1	1	-	-
Heart Disease - - -	6	-	1	1	4	-
Pneumonia - - - - -	2	-	-	2	-	-
Lung Disease - - - -	1	-	-	-	1	-
Gastritis - - - - -	2	-	-	2	-	-
Stomach Disease - - -	1	-	-	-	1	-
Liver Disease - - - -	1	-	-	1	-	-
Bright's Disease (Nephria)	4	-	1	2	1	-
Kidney Disease - - - -	4	-	1	3	-	-
CLASS V.						
Accidental Fall - - -	1	-	-	-	1	-
Blow (Manslaughter) - -	1	-	-	1	-	-

TABLE 13.—Deaths in England of Women referred to Childbirth in each of the 28 Years 1847-74.

YEARS.	REGISTERED BIRTHS OF CHILDREN BORN ALIVE.	NUMBER OF DEATHS FROM			DEATHS OF MOTHERS TO 1,000 CHILDREN BORN ALIVE.
		METRIA AND CHILDBIRTH.	METRIA.	ACCIDENTS OF CHILDBIRTH.	
1847 - - -	539,965	3226	784	2442	6.0
1848 - - -	563,059	3445	1365	2080	6.1
1849 - - -	578,159	3339	1165	2174	5.8
1850 - - -	593,422	3252	1113	2139	5.5
1851 - - -	615,865	3290	1009	2281	5.3
1852 - - -	624,012	3247	972	2275	5.2
1853 - - -	612,391	3063	795	2268	5.0
1854 - - -	634,405	3009	954	2055	4.7
1855 - - -	635,043	2979	1079	1900	4.7
1856 - - -	657,453	2888	1067	1821	4.4
1857 - - -	663,071	2787	836	1951	4.2
1858 - - -	655,481	3131	1068	2063	4.8
1859 - - -	689,881	3496	1233	2258	5.1
1860 - - -	684,048	3173	987	2186	4.6
1861 - - -	696,406	2995	886	2109	4.3
1862 - - -	712,684	3077	940	2137	4.3
1863 - - -	727,417	3588	1155	2433	4.9
1864 - - -	740,275	4016	1484	2532	5.4
1865 - - -	748,069	3823	1333	2490	5.1
1866 - - -	753,870	3682	1197	2485	4.9
1867 - - -	768,349	3412	1066	2346	4.4
1868 - - -	786,858	3503	1196	2307	4.5
1869 - - -	773,381	3283	1181	2102	4.2
1870 - - -	792,787	3875	1492	2383	4.9
1871 - - -	797,428	3935	1464	2471	4.9
1872 - - -	825,907	3803	1400	2403	4.6
1873 - - -	829,778	4115	1740	2375	5.0
1874 - - -	854,956	5927	3108	2819	6.9
28 years 1847-74 -	19,554,420	97,359	34,074	63,285	5.0

TABLE 14.—Deaths referred to Childbirth, and Mortality per 1000 Children born alive in each of the Counties of England in the Year 1874.

REGISTRATION COUNTIES.	REGISTERED BIRTHS OF CHILDREN BORN ALIVE.	NUMBER OF DEATHS referred to			DEATHS OF MOTHERS, TO 1000 CHILDREN BORN ALIVE, from		
		Metria and Childbirth.	Metria.	Accidents of Childbirth.	Metria and Childbirth.	Metria.	Accidents of Childbirth.
ENGLAND - - -	854,956	5,927	3,108	2,819	6.9	3.6	3.3
I.—LONDON - - -							
121,950	801	483	318	6.6	4.0	2.6	
II.—SOUTH EASTERN COUNTIES.							
No. 1 Surrey (<i>extra-metropol.</i>) - -	12,237	70	37	33	5.7	3.0	2.7
2 Kent (<i>extra-metropol.</i>) - - -	21,192	98	48	50	4.6	2.3	2.3
3 Sussex - - - - -	13,307	60	28	32	4.5	2.1	2.4
4 Hampshire - - - - -	16,625	96	56	40	5.8	3.4	2.4
5 Berkshire - - - - -	7,464	50	22	28	6.7	2.9	3.8
III.—SOUTH MIDLAND COUNTIES.							
6 Middlesex (<i>extra-metro.</i>) - -	9,435	60	32	28	6.4	3.4	3.0
7 Hertfordshire - - - - -	6,291	42	19	23	6.7	3.0	3.7
8 Buckinghamshire - - - - -	5,065	39	17	22	7.7	3.4	4.3
9 Oxfordshire - - - - -	5,743	44	21	23	7.7	3.7	4.0
10 Northamptonshire - - - - -	8,953	48	27	21	5.4	3.0	2.4
11 Huntingdonshire - - - - -	1,760	9	4	5	5.1	2.3	2.8
12 Bedfordshire - - - - -	5,181	24	8	16	4.6	1.5	3.1
13 Cambridgeshire - - - - -	6,239	33	15	18	5.3	2.4	2.9
IV.—EASTERN COUNTIES.							
14 Essex - - - - -	15,654	94	55	39	6.0	3.5	2.5
15 Suffolk - - - - -	11,146	46	19	27	4.1	1.7	2.4
16 Norfolk - - - - -	13,117	96	59	37	7.3	4.5	2.8
V.—SOUTH WESTERN COUNTIES.							
17 Wiltshire - - - - -	7,589	53	22	31	7.0	2.9	4.1
18 Dorsetshire - - - - -	5,356	24	11	13	4.5	2.1	2.4
19 Devonshire - - - - -	17,843	101	38	63	5.6	2.1	3.5
20 Cornwall - - - - -	10,814	50	18	32	4.6	1.7	2.9
21 Somersetshire - - - - -	14,937	84	35	49	5.6	2.3	3.3
VI.—WEST MIDLAND COUNTIES.							
22 Gloucestershire - - - - -	16,297	120	54	66	7.4	3.3	4.1
23 Herefordshire - - - - -	3,428	26	14	12	7.6	4.1	3.5
24 Shropshire - - - - -	8,362	71	37	34	8.5	4.4	4.1
25 Staffordshire - - - - -	40,090	268	145	123	6.7	3.6	3.1
26 Worcestershire - - - - -	12,119	87	50	37	7.2	4.1	3.1
27 Warwickshire - - - - -	25,074	156	81	75	6.2	3.2	3.0
VII.—NORTH MIDLAND COUNTIES.							
28 Leicestershire - - - - -	10,753	79	53	26	7.3	4.9	2.4
29 Rutlandshire - - - - -	667	3	1	2	4.5	1.5	3.0
30 Lincolnshire - - - - -	14,274	70	34	36	4.9	2.4	2.5
31 Nottinghamshire - - - - -	14,351	66	35	31	4.6	2.4	2.2
32 Derbyshire - - - - -	13,366	86	39	47	6.4	2.9	3.5
VIII.—NORTH-WESTERN COUNTIES.							
33 Cheshire - - - - -	20,707	171	80	91	8.3	3.9	4.4
34 Lancashire - - - - -	120,006	915	454	461	7.6	3.8	3.8
IX.—YORKSHIRE.							
35 West Riding - - - - -	78,339	596	334	262	7.6	4.3	3.3
36 East Riding (with York) - - -	11,491	81	34	47	7.1	3.0	4.1
37 North Riding - - - - -	8,860	63	38	30	7.7	4.3	3.4
X.—NORTHERN COUNTIES.							
38 Durham - - - - -	38,353	327	186	141	8.5	4.8	3.7
39 Northumberland - - - - -	16,027	159	96	63	9.9	6.0	3.9
40 Cumberland - - - - -	8,246	67	38	29	8.1	4.6	3.5
41 Westmorland - - - - -	2,118	18	10	8	8.5	4.7	3.8
XI.—MONMOUTHSHIRE AND WALES.							
42 Monmouthshire - - - - -	9,176	75	32	43	8.2	3.5	4.7
43 South Wales - - - - -	30,937	274	141	133	8.9	4.6	4.3
44 North Wales - - - - -	14,017	122	48	74	8.7	3.4	5.3

TABLE 15.—Deaths by Lightning in England in each of the 6 Years 1869-74.

DIVISION.	DISTRICT.	DATE OF DEATH.	SEX.	OCCUPATION.	ALL AGES.	AGES.										
						0-	5-	10-	15-	20-	25-	35-	45-	55-	65 and upwards.	
						TOTAL										
1869						TOTAL - - 7										
4	Wayland - -	10 Sept.	Male	Son of a Labourer	1	-	-	1	-	2	1	1	-	2	-	
6	CleburyMortimer	10 May	Male	Agricultural Labourer	1	-	-	-	-	-	1	-	-	-	-	
8	Fylde - -	14 April	Male	Labourer	1	-	-	-	-	-	-	-	-	1	-	
9	Whitby - -	26 Mar.	Male	Labourer	1	-	-	-	-	-	-	-	-	1	-	
9	Whitby - -	26 Mar.	Female	Spinster	1	-	-	-	-	-	1	-	-	-	-	
9	Bradford - -	5 Sept.	Male	Hawker	1	-	-	-	1	-	-	-	-	-	-	
9	Bradford - -	5 Sept.	Female	Worsted Weaver	1	-	-	-	1	-	-	-	-	-	-	
1870						TOTAL - - 19										
2	Petworth - -	26 July	Male	Agricultural Labourer	1	-	-	-	-	-	-	-	1	-	-	
3	NewportPagnell -	26 Oct.	Male	Army Captain	1	-	-	-	-	1	-	-	-	-	-	
3	Amphill - -	30 Oct.	Male	Railway Labourer	1	-	-	-	-	-	-	-	1	-	-	
5	Yeovil - -	16 June	Male	Labourer	1	-	-	-	-	1	-	-	-	-	-	
6	Stoke-upon-Trent	9 July	Male	Son of Bootmaker	1	-	1	-	-	-	-	-	-	-	-	
6	Penkridge - -	1 Aug.	Male	Labourer	1	-	-	-	-	-	-	-	1	-	-	
6	Meriden - -	1 Aug.	Male	Labourer	1	-	-	-	-	1	-	-	-	-	-	
6	Rugby - -	1 Aug.	Male	Agricultural Labourer	1	-	-	-	-	-	-	-	1	-	-	
7	Horncastle - -	1 May	Male	Agricultural Labourer	1	-	-	1	-	-	-	-	-	-	-	
7	Gainsborough - -	16 June	Female	Wife of Shoemaker	1	-	-	-	-	-	-	-	1	-	-	
7	Caistor - -	17 June	Male	Son of Carpenter	1	-	-	1	-	-	-	-	-	-	-	
7	Barrow-upon-Soar	26 July	Male	Labourer	1	-	-	-	1	-	-	-	-	-	-	
7	Mansfield - -	1 Aug.	Male	Labourer	1	-	-	-	-	1	-	-	-	-	-	
8	Wirral - -	4 Aug.	Female	Daughter of Labourer	1	-	-	1	-	-	-	-	-	-	-	
10	Wigton - -	4 Aug.	Male	Farmer	1	-	-	-	-	1	-	-	-	-	-	
11	Llandoverly - -	9 July	Female	Wife of Farmer	1	-	-	-	1	-	-	-	-	-	-	
11	Aberystwith - -	9 July	Female	Agricultural Labourer	1	-	-	-	1	-	-	-	-	-	-	
11	Pontypridd - -	1 Aug.	Female	Widow of Farmer	1	-	-	-	-	1	-	-	-	-	-	
11	Neath - -	1 Aug.	Female	Spinster	1	-	-	-	-	-	-	-	1	-	-	
1871						TOTAL - - 28										
2	Hoo - -	5 July	Male	Hawker	1	-	-	-	-	1	-	-	-	-	-	
2	Sheppey - -	3 Sept.	Male	Labourer	1	-	-	-	-	-	-	-	1	-	-	
2	Romney Marsh - -	20 June	Male	Labourer	1	-	-	-	-	-	1	-	-	-	-	
2	Lewes - -	20 June	Male	Agricultural Labourer	1	-	-	-	-	-	1	-	-	-	-	
2	Winchester - -	20 June	Male	Coachman	1	-	-	-	-	1	-	-	-	-	-	
3	Aylesbury - -	27 April	Male	Labourer	1	-	-	-	-	-	-	1	-	-	-	
3	Newport Pagnell	5 July	Male	Agricultural Labourer	1	-	-	-	-	1	-	-	-	-	-	
3	Newport Pagnell	5 July	Male	Agricultural Labourer	1	-	-	-	1	-	-	-	-	-	-	
3	Newport Pagnell	7 July	Female	Daughter of Smith	1	-	1	-	-	-	-	-	-	-	-	
3	Potterspurty - -	5 July	Male	Coachmaker	1	-	-	-	-	-	1	-	-	-	-	
3	Oundle - -	27 April	Male	Labourer	1	-	-	-	1	-	-	-	-	-	-	
4	Loddon - -	5 July	Male	Agricultural Labourer	1	-	-	-	-	-	-	-	1	-	-	
5	Cricklade - -	20 June	Male	Labourer	1	-	-	-	1	-	-	-	-	-	-	
6	Wolverhampton - -	19 June	Male	Farmer	1	-	-	-	-	-	1	-	-	-	-	
6	Aston - -	29 July	Male	Clerk	1	-	-	-	-	-	-	-	-	-	-	
7	Bourn - -	19 June	Male	Son of Farmer	1	-	-	1	-	-	-	-	-	-	-	
7	Bourn - -	28 July	Male	Agricultural Labourer	1	-	-	1	-	-	-	-	-	-	-	
7	Louth - -	19 June	Female	Wife of Wheelwright	1	-	-	-	-	1	-	-	-	-	-	
7	Gainsborough - -	30 Aug.	Female	Wife of Agricult. Labr.	1	-	-	-	-	-	-	-	1	-	-	
7	Worksop - -	8 July	Male	Agricultural Labourer	1	-	-	-	-	-	-	1	-	-	-	
7	Bakewell - -	18 Aug.	Male	Farmer	1	-	-	-	-	-	-	1	-	-	-	
8	Macclesfield - -	27 May	Female	Widow of Collier	1	-	-	-	-	-	-	-	1	-	-	
8	Wigan - -	20 June	Female	Wife of Collier	1	-	-	-	-	-	-	1	-	-	-	
8	Ashton-und.-Lyne	18 Aug.	Male	Quarryman	1	-	-	1	-	-	-	-	-	-	-	
8	Haslingden - -	21 June	Male	Labourer	1	-	-	1	-	-	-	-	-	-	-	
9	Ecclesall Bierlow	18 Aug.	Male	Farm Servant	1	-	-	1	-	-	-	-	-	-	-	
9	Whitby - -	5 July	Male	Agricultural Labourer	1	-	-	-	-	1	-	-	-	-	-	
10	Auckland - -	18 Aug.	Male	Farmer	1	-	-	-	1	-	-	-	-	-	-	
1872						TOTAL - - 46										
1	Hackney - -	25 July	Male	Labourer	1	-	-	-	-	1	-	-	-	-	-	
2	Farnham - -	8 May	Male	-	1	-	-	-	-	-	-	-	-	1	-	
2	Hartley Wintney	7 Aug.	Female	Widow	1	-	-	-	-	-	-	-	1	-	-	
3	Hendon - -	2 Aug.	Male	Son of Labourer	1	-	1	-	-	-	-	-	-	-	-	
3	Northampton - -	3 July	Male	Landowner	1	-	-	-	-	-	-	1	-	-	-	
3	Northampton - -	10 Aug.	Male	Shoemaker	1	-	-	-	-	1	-	-	-	-	-	
3	Kettering - -	3 Sept.	Male	Labourer	1	-	-	-	-	-	1	-	-	-	-	
3	St. Neots - -	23 July	Female	Agricultural Labourer	1	-	-	-	-	1	-	-	-	-	-	
3	St. Neots - -	19 Aug.	Male	Butler	1	-	-	-	-	1	-	-	-	-	-	
3	Biggleswade - -	13 July	Male	Publican	1	-	-	-	-	1	-	-	-	-	-	
3	Leighton Buzzard	7 June	Male	Agricultural Labourer	1	-	-	-	-	-	1	-	-	-	-	
3	Leighton Buzzard	22 July	Male	Labourer	1	-	-	1	-	-	-	-	-	-	-	
4	West Ham - -	13 July	Male	Labourer	1	-	-	-	-	-	-	1	-	-	-	
4	Epping - -	12 July	Male	-	1	-	-	-	-	-	1	-	-	-	-	
4	Thetford - -	9 July	Male	Farm Bailiff	1	-	-	-	-	-	-	1	-	-	-	

TABLE 15. (cont.)—Deaths by Lightning in England in each of the 6 Years 1869-74.

DIVISION.	DISTRICT.	DATE OF DEATH.	SEX.	OCCUPATION.	ALL AGES.	AGES.										
						0-	5-	10-	15-	20-	25-	35-	45-	55-	65 and upwards.	
						TOTAL										
1872 cont.						TOTAL - - 21										
5	Truro - -	2 Aug.	Female	Wife of Shipwright	1	-	-	-	-	-	-	-	1	-	-	
5	Bedminster - -	11 July	Female	Widow of Sawyer	1	-	-	-	-	-	-	-	-	-	1	
6	Kington - -	18 June	Male	Labourer	1	-	-	-	-	-	-	1	-	-	-	
6	Whitchurch - -	18 June	Male	Agricultural Labourer	1	-	-	-	-	1	-	-	-	-	-	
6	Walsall - -	18 June	Female	Daughter of Miner	1	-	1	-	-	-	-	-	-	-	-	
6	Walsall - -	18 June	Female	Wife of Carter	1	-	-	-	-	-	-	1	-	-	-	
6	Stourbridge - -	25 July	Male	Miner	1	-	-	-	-	-	-	1	-	-	-	
7	Horncastle - -	12 July	Male	Son of Agricult. Lab.	1	-	-	1	-	-	-	-	-	-	-	
7	Spilsby - -	7 June	Male	Agricultural Labourer	1	-	-	-	-	-	-	1	-	-	-	
7	Caistor - -	8 May	Male	Labourer	1	-	-	-	-	-	-	1	-	-	-	
7	Basford - -	25 July	Male	Labourer	1	-	-	-	-	-	-	-	1	-	-	
7	Radford - -	18 June	Male	Pensioner	1	-	-	-	-	-	-	-	1	-	-	
8	Wigan - -	24 Apr.	Female	Wife of Engine-man	1	-	-	-	-	-	-	1	-	-	-	
8	Bolton - -	4 Sept.	Male	Factory-hand	1	-	-	-	-	-	-	-	1	-	-	
8	Clitheroe - -	12 July	Male	Farmer	1	-	-	-	-	-	-	-	1	-	-	
9	Todmorden - -	18 June	Female	Wife of Weaver	1	-	-	-	-	-	-	-	-	1	-	
9	Halifax - -	18 June	Male	Labourer	1	-	-	-	-	1	-	-	-	-	-	
9	Tadcaster - -	18 June	Male	Agricultural Labourer	1	-	-	-	-	-	-	-	-	-	1	
9	Beverley - -	4 July	Male	Labourer	1	-	-	-	-	-	-	1	-	-	-	
9	Patrington - -	3 June	Male	Agricultural Labourer	1	-	-	-	-	-	-	1	-	-	-	
9	Driffield - -	22 May	Male	Labourer	1	-	-	-	-	-	-	1	-	-	-	
9	Malton - -	17 June	Male	Farmer	1	-	-	-	-	-	1	-	-	-	-	
10	Stockton - -	7 Aug.	Female	Wife of Brickl's. Lab.	1	-	-	-	-	-	-	1	-	-	-	
10	Durham - -	11 July	Male	Coal Miner	1	-	-	-	-	-	-	1	-	-	-	
10	Newcastle-on-Ty.	18 June	Male	Labourer	1	-	-	-	-	1	-	-	-	-	-	
10	Tynemouth - -	18 June	Male	Fisherman	1	-	-	-	-	-	-	1	-	-	-	
10	Kendal - -	18 June	Female	Spinster	1	-	-	-	-	-	-	-	-	-	1	
11	Bridgend - -	2 Aug.	Male	Farmer	1	-										

TABLE 16.*—Deaths in 18 of the largest English Towns in the 52 Weeks ending 2nd January 1875.

(Estimated aggregate population in 1874, 6,534,189; viz., 3,400,701 in London, and 3,133,488 in the remaining 17 Towns.)

BOROUGHES, &c. <i>(Municipal Boundaries for all except LONDON.)</i>	DEATHS from ALL CAUSES.	The DEATHS registered in the 52 Weeks included											
		Deaths of		Deaths from									
		Infants under 1 Year of Age.	Persons aged 60 Years and upwards.	Small-pox.	Measles.	Scarlet Fever.	Diphtheria.	Whooping-cough.	Fever.	Diarrhoea.	Violence.	Inquest Cases.	In Public Institutions.
TOTAL in 18 LARGE TOWNS - - - - }	164,329	43,176	32,189	867	3423	8404	691	3954	3811	8332	5687	10,369	22,815
LONDON - - - - -	76606	18875	16523	56	1655	2662	365	1861	1554	3077	2770	5487	13208
PORTSMOUTH - - - -	2453	579	538	2	55	35	24	105	105	113	58	131	257
NORWICH - - - - -	1935	461	619	-	6	2	8	17	34	101	57	116	206
BRISTOL - - - - -	4382	1074	1118	26	66	22	14	43	84	159	156	260	618
WOLVERHAMPTON - - -	1693	478	340	1	49	34	6	37	46	101	49	81	241
BIRMINGHAM - - - -	9664	2377	1453	639	134	741	73	248	199	616	398	733	1138
LEICESTER - - - - -	2560	934	511	-	24	23	8	43	56	256	50	167	222
NOTTINGHAM - - - -	2255	625	543	-	19	49	9	24	59	140	59	144	247
LIVERPOOL - - - - -	16336	4633	3128	30	444	1911	54	516	433	879	716	898	2241
MANCHESTER - - - -	10799	2740	1636	10	226	495	11	319	215	668	334	857	1651
SALFORD - - - - -	3935	1110	562	4	138	156	14	133	124	296	115	222	291
OLDHAM - - - - -	2564	675	430	1	84	72	12	96	45	90	68	122	173
BRADFORD - - - - -	4395	1235	694	60	137	288	3	68	106	230	111	143	340
LEEDS - - - - -	8001	2312	1204	34	185	664	29	143	205	502	188	296	603
SHEFFIELD - - - - -	7009	2046	1052	1	75	672	21	132	190	475	193	269	489
HULL - - - - -	3340	921	668	3	50	184	12	49	170	222	104	119	292
SUNDERLAND - - - -	2443	708	452	-	60	136	14	16	70	171	89	106	163
NEWCASTLE-ON-TYNE -	3959	1093	668	-	16	253	14	104	116	236	172	218	435

TABLE 17.*—Analysis of the Mortality in 18 of the largest English Towns in the 52 Weeks ending 2nd January 1875.

BOROUGHES, &c.	ANNUAL RATE OF MORTALITY per 1000 living from		PER-CENTAGE OF DEATHS under 1 Year to Births Registered.	PER-CENTAGE, TO TOTAL DEATHS, OF DEATHS					
	ALL CAUSES.	SEVEN ZYMOTIC DISEASES.		Of Infants under 1 Year of Age.	Of Persons aged 60 Years and upwards.	From Seven Zymotic Diseases.	From Violence.	Registered upon Information of the Coroner. (Inquests.)	Registered in large Public Institutions.
TOTAL in 18 LARGE TOWNS - - - - }	25.0	4.5	17.4	26.3	19.6	17.9	3.5	6.3	13.9
LONDON - - - - -	22.5	3.3	15.5	24.6	21.6	14.7	3.6	7.2	17.2
PORTSMOUTH - - - -	20.4	3.6	15.1	23.6	21.9	17.9	2.4	5.3	10.5
NORWICH - - - - -	23.5	2.0	17.7	23.8	32.0	8.7	2.9	6.0	10.6
BRISTOL - - - - -	22.7	2.1	15.3	24.5	25.5	9.4	3.6	5.9	14.1
WOLVERHAMPTON - - -	23.9	3.9	16.9	23.2	20.1	16.2	2.9	4.8	14.2
BIRMINGHAM - - - -	26.8	7.3	18.0	27.7	15.0	27.4	4.1	7.6	11.8
LEICESTER - - - - -	24.1	3.9	21.5	36.5	20.0	16.0	2.0	6.5	8.7
NOTTINGHAM - - - -	24.8	3.3	19.5	27.7	24.1	13.3	2.6	6.4	11.0
LIVERPOOL - - - - -	32.0	8.4	23.3	23.4	19.1	26.1	4.4	5.5	13.7
MANCHESTER - - - -	30.4	5.5	19.7	25.4	15.6	18.0	3.1	7.9	15.3
SALFORD - - - - -	29.6	6.5	18.9	23.2	14.3	22.0	2.9	5.6	7.4
OLDHAM - - - - -	29.7	4.6	19.0	26.3	16.8	15.6	2.7	4.8	6.7
BRADFORD - - - - -	27.0	5.5	18.9	23.1	15.8	20.3	2.5	3.3	7.7
LEEDS - - - - -	28.7	6.3	20.0	28.9	15.0	22.0	2.3	3.7	7.5
SHEFFIELD - - - - -	26.9	6.0	18.8	29.2	15.0	22.3	2.3	3.8	7.0
HULL - - - - -	25.5	5.3	17.2	27.6	20.0	20.7	3.1	3.6	8.7
SUNDERLAND - - - -	23.4	4.5	16.6	29.0	18.5	19.1	3.6	4.3	6.7
NEWCASTLE-ON-TYNE -	29.2	5.5	19.8	27.6	16.9	18.8	4.3	5.5	11.0

* Tables 16 and 17 are reprinted from the "Annual Summary" for 1874.

Measles Small pox

TABLE 18.—Deaths and Mortality from Small-pox in 17 LARGE TOWNS.

BOROUGHES.	DEATHS from SMALL-POX in 52 or 53 Weeks in each Year.					Average Annual Deaths in 5 Years 1870-74.	Annual Rate of Mortality per 1000.	
	1870.	1871.	1872.	1873.	1874.		5 Years 1870-74.	1874.
London - - - - -	958	7876	1781	115	56	2157	.651	.016
Portsmouth - - - -	1	39	508	48	2	120	1.039	.017
Norwich - - - - -	-	245	317	1	-	113	1.393	-
Bristol - - - - -	3	45	209	9	26	58	.311	.135
Wolverhampton - - -	-	284	180	2	1	93	1.343	.014
Birmingham - - - -	3	61	298	122	639	225	.643	1.771
Leicester - - - - -	-	11	313	2	-	65	.656	-
Nottingham - - - -	-	144	205	-	-	70	.793	-
Liverpool - - - - -	174	1919	50	10	30	437	.874	.059
Manchester - - - - -	53	267	75	20	10	85	.241	.028
Salford - - - - -	34	227	41	4	4	62	.485	.030
Bradford - - - - -	9	5	32	21	60	25	.165	.368
Leeds - - - - -	9	43	268	112	34	93	.349	.122
Sheffield - - - - -	7	406	601	5	1	204	.823	.004
Hull - - - - -	1	57	216	26	3	61	.488	.023
Sunderland - - - -	1	850	54	1	-	181	1.798	-
Newcastle-on-Tyne -	6	695	135	4	-	168	1.285	-

TABLE 19.—Deaths and Mortality from Measles in 17 LARGE TOWNS.

BOROUGHES.	DEATHS from MEASLES in 52 or 53 Weeks in each Year.					Average Annual Deaths in 5 Years 1870-74.	Annual Rate of Mortality per 1000.	
	1870.	1871.	1872.	1873.	1874.		5 Years 1870-74.	1874.
London - - - - -	1443	1431	1680	2195	1655	1681	.507	.487
Portsmouth - - - -	37	33	52	16	55	40	.346	.457
Norwich - - - - -	27	1	57	8	6	20	.247	.073
Bristol - - - - -	126	61	58	109	66	84	.451	.342
Wolverhampton - - -	20	26	12	3	49	22	.318	.691
Birmingham - - - -	92	400	44	123	134	159	.454	.371
Leicester - - - - -	36	30	28	60	24	36	.363	.226
Nottingham - - - -	19	16	2	33	19	18	.204	.209
Liverpool - - - - -	226	473	478	348	444	394	.788	.869
Manchester - - - - -	72	305	113	354	226	214	.607	.636
Salford - - - - -	8	160	23	236	138	113	.883	1.037
Bradford - - - - -	85	8	190	11	137	86	.567	.840
Leeds - - - - -	192	99	128	48	185	130	.488	.664
Sheffield - - - - -	60	159	77	192	75	113	.456	.287
Hull - - - - -	7	88	13	40	50	40	.320	.382
Sunderland - - - -	1	58	50	33	60	40	.397	.575
Newcastle-on-Tyne -	21	69	24	76	16	41	.314	.118

TABLE 20.—Deaths and Mortality from Scarlet Fever in 17 LARGE TOWNS.

BOROUGHES.	DEATHS from SCARLET FEVER in 52 or 53 Weeks in each Year.					Average Annual Deaths in 5 Years 1870-74.	Annual Rate of Mortality per 1000.	
	1870.	1871.	1872.	1873.	1874.		5 Years 1870-74.	1874.
	London - - - -	5998	1896	904	652		2662	2422
Portsmouth - - -	115	30	5	11	35	39	·338	·291
Norwich - - - -	167	43	18	5	2	47	·579	·024
Bristol - - - -	746	173	23	39	22	201	1·078	·114
Wolverhampton - -	52	23	70	124	34	61	·881	·480
Birmingham - - -	324	127	409	586	741	437	1·248	2·053
Leicester - - - -	260	112	5	6	23	81	·817	·217
Nottingham - - -	120	28	5	11	49	43	·487	·539
Liverpool - - - -	1268	630	222	215	1911	849	1·698	3·742
Manchester - - - -	256	260	357	545	495	383	1·086	1·393
Salford - - - -	99	60	78	127	156	104	·813	1·172
Bradford - - - -	241	144	81	47	288	160	1·055	1·766
Leeds - - - -	329	108	146	628	664	375	1·407	2·382
Sheffield - - - -	657	325	189	228	672	414	1·670	2·574
Hull - - - -	306	65	29	36	184	124	·992	1·405
Sunderland - - - -	44	190	114	28	136	102	1·013	1·303
Newcastle-on-Tyne -	72	39	109	466	258	189	1·445	1·905

TABLE 21.—Deaths and Mortality from Diphtheria in 17 LARGE TOWNS.

BOROUGHES.	DEATHS from DIPHTHERIA in 52 or 53 Weeks in each Year.					Average Annual Deaths in 5 Years 1870-74.	Annual Rate of Mortality per 1000.	
	1870.	1871.	1872.	1873.	1874.		5 Years 1870-74.	1874.
	London - - - -	313	313	255	306		365	310
Portsmouth - - -	14	10	19	15	24	16	·139	·199
Norwich - - - -	15	13	3	2	8	8	·099	·097
Bristol - - - -	20	19	16	20	14	18	·097	·073
Wolverhampton - -	23	4	3	7	6	9	·130	·085
Birmingham - - -	66	76	82	100	73	79	·226	·202
Leicester - - - -	12	6	3	14	8	9	·091	·075
Nottingham - - -	7	4	—	—	9	4	·045	·099
Liverpool - - - -	63	74	69	50	54	62	·124	·106
Manchester - - - -	36	11	19	11	11	18	·051	·031
Salford - - - -	10	12	11	8	14	11	·086	·105
Bradford - - - -	26	19	15	3	3	13	·086	·018
Leeds - - - -	24	24	10	22	29	22	·083	·104
Sheffield - - - -	26	16	18	15	21	19	·077	·080
Hull - - - -	12	2	7	7	12	8	·064	·092
Sunderland - - - -	29	16	9	16	14	17	·169	·134
Newcastle-on-Tyne -	8	14	8	11	14	11	·084	·103

TABLE 22.—Deaths and Mortality from Fever in 17 LARGE TOWNS.

BOROUGHES.	DEATHS from FEVER in 52 or 53 Weeks in each Year.					Average Annual Deaths in 5 Years 1870-74.	Annual Rate of Mortality per 1000.	
	1870.	1871.	1872.	1873.	1874.		5 Years 1870-74.	1874.
	London - - - -	2053	1746	1340	1549		1554	1648
Portsmouth - - -	93	75	121	100	105	99	·857	·872
Norwich - - - -	71	39	55	61	34	52	·641	·413
Bristol - - - -	120	116	83	106	84	102	·547	·435
Wolverhampton - -	62	54	33	33	46	56	·808	·649
Birmingham - - -	233	184	188	205	199	202	·577	·551
Leicester - - - -	50	76	70	63	56	63	·635	·527
Nottingham - - -	116	106	77	70	59	86	·975	·649
Liverpool - - - -	900	888	441	314	433	595	1·190	·848
Manchester - - - -	465	377	248	288	215	319	·904	·605
Salford - - - -	131	85	86	88	124	103	·805	·932
Bradford - - - -	194	134	133	128	106	139	·916	·650
Leeds - - - -	339	331	295	210	205	276	1·035	·735
Sheffield - - - -	340	221	242	238	190	246	·992	·728
Hull - - - -	117	105	171	122	170	137	1·096	1·298
Sunderland - - - -	58	221	106	53	70	102	1·013	·671
Newcastle-on-Tyne -	133	99	84	111	116	109	·834	·856

TABLE 23.—Deaths and Mortality from Diarrhoea in 17 LARGE TOWNS.

BOROUGHES.	DEATHS from DIARRHŒA in 52 or 53 Weeks in each Year.					Average Annual Deaths in 5 Years 1870-74.	Annual Rate of Mortality per 1000.	
	1870.	1871.	1872.	1873.	1874.		5 Years 1870-74.	1874.
	London - - - -	3776	3894	3490	3879		3077	3623
Portsmouth - - -	122	106	106	109	113	111	·961	·938
Norwich - - - -	144	140	111	80	101	115	1·418	1·228
Bristol - - - -	216	172	158	141	159	169	·907	·824
Wolverhampton - -	122	70	92	95	101	96	1·386	1·425
Birmingham - - -	636	702	640	732	616	665	1·899	1·707
Leicester - - - -	215	309	306	312	256	280	2·824	2·411
Nottingham - - -	126	173	129	130	140	140	1·587	1·540
Liverpool - - - -	1151	1127	998	911	879	1013	2·026	1·721
Manchester - - - -	827	979	755	753	668	796	2·256	1·880
Salford - - - -	304	359	249	278	296	297	2·322	2·224
Bradford - - - -	269	252	235	197	230	237	1·562	1·411
Leeds - - - -	652	659	602	500	502	583	2·187	1·801
Sheffield - - - -	507	547	437	426	475	478	1·929	1·820
Hull - - - -	213	179	278	227	222	224	1·792	1·695
Sunderland - - - -	103	123	112	153	171	133	1·321	1·638
Newcastle-on-Tyne -	185	197	165	227	236	202	1·545	1·743

Scarlet fever

Scarlet

min
max

TABLE 24.—Deaths by different Diseases in England in 1874, CLASSIFIED according to the Nomenclature drawn up by a COMMITTEE appointed by the ROYAL COLLEGE OF PHYSICIANS OF LONDON.

Table with columns for No., NAME, Persons, Males, Females. Includes categories like ALL CAUSES, SPECIFIED CAUSES, GENERAL DISEASES A. & B., LOCAL DISEASES, POISONS, INJURIES, SURGICAL OPERATIONS, HUMAN PARASITES, CONGENITAL MALFORMATIONS, MURDER, MANSLAUGHTER, VIOLENT DEATHS NOT CLASSED, SUDDEN DEATHS, CAUSES NOT SPECIFIED, ABSCESS AND TUMOUR, ARRANGEMENT OF LOCAL DISEASES (Nervous System, Eye, Ear, Nose, Circulatory System, Absorbent, Ductless Glands, Respiratory System, Digestive, Urinary, Generative, Female Breast, Organs of Locomotion, Cellular Tissue, Cutaneous System), DISEASES OF THE NERVOUS SYSTEM, DISEASES OF THE EYE, DISEASES OF THE EAR, DISEASES OF THE NOSE, DISEASES OF THE CIRCULATORY SYSTEM, DISEASES OF THE HEART AND ITS MEMBRANES, DISEASES OF THE CELLULAR TISSUE, DISEASES OF THE CUTANEOUS SYSTEM, DISEASES OF THE ABSORBENT SYSTEM, DISEASES OF THE DUCTLESS GLANDS, DISEASES OF THE RESPIRATORY SYSTEM, DISEASES OF THE DIGESTIVE SYSTEM, DISEASES OF THE URINARY SYSTEM, DISEASES OF THE GENERATIVE SYSTEM, DISEASES OF THE FEMALE BREAST.

TABLE 24. (continued.)—Deaths by different Diseases in England in 1874, CLASSIFIED according to the Nomenclature drawn up by a COMMITTEE appointed by the ROYAL COLLEGE OF PHYSICIANS OF LONDON.

Table with columns for No., NAME, Persons, Males, Females. Includes categories like DISEASES OF THE ORGANS OF LOCOMOTION, DISEASES OF THE CELLULAR TISSUE, DISEASES OF THE CUTANEOUS SYSTEM, GENERAL DISEASES A. (Small-pox, Cow-pox, Chicken-pox, Measles, Scarlet Fever, Typhus Fever, Cerebro-spinal Fever, Enteric Fever, Relapsing Fever, Simple Continued Fever, Yellow Fever, Ague, Remittent Fever, Simple Cholera, Malignant Cholera, Diphtheria, Whooping-cough, Mumps, Influenza, Glanders, Farcy, Malignant Pustule, Erysipelas, Pysemia, Puerperal Fever), GENERAL DISEASES B. (Acute Rheumatism, Synovial Rheumatism, Muscular Rheumatism, Chronic Rheumatism, Rheumatism of Heart, Acute Gout, Chronic Gout, Gouty Synovitis, Syphilis, Cancer, Lupus, Rodent Ulcer, Scrofula with Tubercular Meningitis, Phthisis Pulmonalis, Hamoptysis, Tabes Mesenterica, Tubercular Peritonitis), DISEASES OF THE NERVOUS SYSTEM (Diseases of the Brain and its Membranes, Diseases of the Spinal Cord and its Membranes, Diseases of the Nerves, Disorders of the Intellect), DISEASES OF THE EYE (Diseases of the Conjunctiva, Ophthalmia, Iritis, Diseases of the Iris, Diseases of the Choroid and Retina, Amaurosis, Cataract), DISEASES OF THE EAR (Diseases of the Internal Ear), DISEASES OF THE NOSE (Epistaxis, Polypus Nasi), DISEASES OF THE CIRCULATORY SYSTEM (Diseases of the Pericardium, Diseases of the Endocardium, Diseases of the Muscular Structure of the Heart, Carditis, Hypertrophy, Cyanosis, Angina Pectoris, Syncope), DISEASES OF THE FEMALE BREAST.

* Deaths so returned are classed to typhus.

TABLE 24. (continued.)—Deaths by different Diseases in England in 1874, CLASSIFIED according to the Nomenclature drawn up by a COMMITTEE appointed by the ROYAL COLLEGE OF PHYSICIANS OF LONDON.

Table with columns: No., NAME., Persons., Males., Females. It is divided into sections: DISEASES OF THE CIRCULATORY SYSTEM, DISEASES OF THE DIGESTIVE SYSTEM, DISEASES OF THE RESPIRATORY SYSTEM, and DISEASES OF THE URINARY SYSTEM.

TABLE 24. (continued.)—Deaths by different Diseases in England in 1874, CLASSIFIED according to the Nomenclature drawn up by a COMMITTEE appointed by the ROYAL COLLEGE OF PHYSICIANS OF LONDON.

Table with columns: No., NAME., Persons., Males., Females. It is divided into sections: DISEASES OF THE URINARY SYSTEM, DISEASES OF THE FEMALE BREAST, DISEASES OF THE ORGANS OF LOCOMOTION, DISEASES OF THE GENERATIVE SYSTEM, DISEASES OF THE CELLULAR TISSUE, DISEASES OF THE CUTANEOUS SYSTEM, and CONDITIONS NOT NECESSARILY ASSOCIATED WITH GENERAL OR LOCAL DISEASES.

TABLE 24. (continued.)—Deaths by different Diseases in England in 1874, CLASSIFIED according to the Nomenclature drawn up by a COMMITTEE appointed by the ROYAL COLLEGE OF PHYSICIANS OF LONDON.

No.	N A M E.	Persons.	Males.	Females.	No.	N A M E.	Persons.	Males.	Females.
VI.	INJURIES (INCLUDING OTHER POISONS).				IX.	CONGENITAL MALFORMATIONS.			
	GENERAL INJURIES.					Malformations - - - - -	262	141	121
	Accident or Negligence.					Nævus on Neck - - - - -	-	-	-
	1. Fractures and Contusions - - - - -	7374	6181	1193	X.	MURDER, MANSLAUGHTER, HANGING (EXECUTION), AND OTHER VIOLENT DEATHS NOT CLASSED.			
	2. Gunshot - - - - -	98	88	10		HOMICIDE.			
	3. Cut, Stab - - - - -	141	117	24		Murder and Manslaughter - - - - -	409	249	160
	4. Burns and Scalds - - - - -	2559	1349	1210		EXECUTION.			
	992. Blister - - - - -	-	-	-		Hanging - - - - -	18	15	3
	5. Poison - - - - -	312	190	122	996.	Privation - - - - -	73	47	26
	6. Drowning - - - - -	2611	2197	414		Want of Breast Milk - - - - -	404	237	167
	7. Suffocation - - - - -	1560	891	669		Inanition of Infancy - - - - -	1036	535	501
	8. Otherwise - - - - -	1012	759	253		Other Violent Deaths (not classed) - - - - -	234	174	60
	Suicide.					SUDDEN DEATHS, CAUSE UNASCERTAINED	3421	2062	1359
	1. Gunshot Wounds - - - - -	93	61	2		CAUSES NOT SPECIFIED - - - - -	3271	1801	1470
	2. Cut, Stab - - - - -	340	266	74		Abscess, Tumour - - - - -	578	284	294
	3. Poison - - - - -	149	93	56					
	4. Drowning - - - - -	280	179	101					
	5. Hanging - - - - -	597	472	125					
	6. Otherwise - - - - -	133	103	30					
VII.	SURGICAL OPERATIONS.								
	Cataract (Operation) - - - - -	-	-	-					
	Ovariectomy - - - - -	56	-	56					
	Cesarean Section - - - - -	5	-	5					
	Instrumental Delivery - - - - -	-	-	-					
	Craniotomy - - - - -	-	-	-					
VIII.	HUMAN PARASITES.								
	CLASS B. STERELMINTHA.								
	Tænia (Tape Worm) - - - - -	5	4	1					
	Hydatid in Liver - - - - -	29	13	16					

INDEX OF DISTRICTS.

[The following Index furnishes a reference to the *Number* of each REGISTRATION DISTRICT in the topographical arrangement adopted in the Tables of Abstracts contained in the Report. The alphabetical arrangement places compound names in the order in which they are pronounced: thus, East Ashford will be found under the letter E, and not under A.]

In consequence of numerous alterations (amalgamations of districts and formations of new districts) since the numerical arrangement, 1 to 623, was adopted in the Abstracts for the year 1847, the districts were re-numbered consecutively from 1 to 627 in the Abstracts for the year 1871.*

For names of Towns, such as Leamington, Torquay, &c., which are not found in this "Index of Districts," see the "Index of Sub-districts" (page 271) and "Index of certain Towns" (page 281).

A

Aberayron, 600.
Abergavenny, 579.
Aberystwith, 601.
Abingdon, 114.
Alcester, 398.
Alderbury (Salisbury), 254.
Alnwick, 560.
Alresford, 104.
Alston, 565.
Alton, 105.
Altrincham, 447.
Alverstone, 88.
Amersham, 139.
Amesbury, 253.
Amphill, 172.
Andover, 109.
Anglesey, 627.
Ashborne, 440.
Ashby-de-la-Zouch, 407.
Ashton-under-Lyne, 468.
Aston, 388.
Atherstone (Shrewsbury) 351.
Atherstone, 390.
Auckland, 543.
Axbridge, 315.
Axminster, 269.
Aylesbury, 142.
Aylsham, 223.
Aysgarth, 537.

B

Bakewell, 442.
Bala, 620.
Banbury, 154.
Bangor, 625.
Barnet, 127.
Barnsley, 505.
Barnstaple, 285.
Barrow-upon-Soar, 409.
Barton-upon-Irwell, 464.
Basford, 431.
Basingstoke, 107.
Bath, 317.
Battle, 68.
Beaminster, 267.
Bedale, 535.
Bedford, 170.
Bedminster, 319.
Bedwelty, 580.
Belford, 561.
Bellingham, 558.
Belper, 439.
Berkhampstead, 138.
Berwick, 562.
Bethnal Green, 15.
Beverley, 518.
Bicester, 150.
Bideford, 287.
Biggleswade, 171.
Billericay, 190.
Billesdon, 403.
Bingham, 436.
Birkenhead, 454.
Birmingham, 387.
Bishop Stortford, 130.
Blaby, 404.
Blackburn, 474.
Blandford, 260.
Blean, 57.
Blofield, 228.
Blything, 216.
Bodmin, 294.
Bolton, 462.
Bootle, 573.
Bosmere, 211.
Boston, 418.
Bourn, 415.
Brackley, 155.
Bradfield, 117.
Bradford-on-Avon, 249.
Bradford (Yorkshire), 496.
Braintree, 199.
Bramley, 499.
Brampton, 567.
Brecknock, 604.
Brentford, 125.
Bridge, 55.
Bridgend, 586.
Bridgnorth, 348.
Bridgwater, 307.
Bridlington, 524.
Bridport, 268.
Brighton, 76.
Bristol, 320.
Brixworth, 161.
Bromley, 40.

Bromsgrove, 385.
Bromyard, 341.
Buckingham, 145.
Bulth, 603.
Burnley, 472.
Burton-upon-Trent, 368.
Bury, 463.
Bury St. Edmunds, 206.

C

Caistor, 425.
Calne, 245.
Camberwell, 25.
Cambridge, 178.
Camelford, 290.
Canterbury, 56.
Cardiff, 583.
Cardigan, 597.
Carlisle, 569.
Carmarthen, 593.
Carnarvon, 624.
Castle Ward, 555.
Catherington, 102.
Caxton, 176.
Chapel-en-le-Frith, 443.
Chard, 309.
Cheadle, 366.
Chelmsford, 191.
Chelsea, 2.
Cheltenham, 335.
Chepstow, 577.
Chertsey, 30.
Chester, 452.
Chesterfield, 441.
Chester-le-Street, 549.
Chesterton, 177.
Chichester, 83.
Chippenham, 244.
Chipping Norton, 153.
Chipping Sodbury, 322.
Chorley, 475.
Chorlton, 465.
Christchurch, 92.
Church Stretton, 346.
Cirencester, 331.
Clebury Mortimer, 347.
Clifton, 321.
Clitheroe, 473.

* Thus, the number of Marriages in the Aberayron District may at once be ascertained by referring to the "Abstract of Marriages," District number 600 (see page 24); and the numbers of Births and Deaths, of Deaths at different Ages, &c. will be found by referring to the same district number in the respective Tables.

Clun, 345.
Clutton, 316.
Cockermouth, 571.
Colchester, 195.
Congleton, 450.
Conway, 626.
Cookham, 120.
Corwen, 619.
Cosford, 204.
Coventry, 393.
Cranbrook, 51.
Crediton, 282.
Crickhowell, 605.
Cricklade, 242.
Croydon, 37.
Cuckfield, 74.

D

Darlington, 540.
Dartford, 41.
Daventry, 160.
Depwade, 230.
Derby, 438.
Devizes, 247.
Dewsbury, 501.
Docking, 235.
Dolgelly, 621.
Doncaster, 510.
Dorchester, 265.
Dorking, 34.
Dover, 63.
Downham, 238.
Driffield, 523.
Droitwich, 384.
Droxford, 101.
Dudley, 375.
Dulverton, 304.
Dunmow, 200.
Durham, 546.
Dursley, 324.

E

Easington, 547.
Easingwold, 527.
East Ashford, 54.
Eastbourne, 69.
East Grinstead, 73.
Easthampstead, 121.
East Preston (Worthing), 81.
East Retford, 428.
Eastry, 62.
East Stonehouse, 278.
East Ward, 574.
Ecclesall Bierlow, 507.
Edmonton, 128.
Elham, 64.
Ellesmere, 354.
Ely, 181.
Epping, 186.
Epsom, 29.
Erpingham, 222.
Eton, 140.
Evesham, 382.
Exeter, 272.

F

Falmouth, 298.
Fareham, 89.
Faringdon, 113.
Farnham, 32.
Faversham, 58.
Festiniog, 622.
Flegg, 220.
Foleshill, 392.
Forden (Montgomery), 612.
Fordingbridge, 94.
Forehoe, 226.
Freebridge Lynn, 236.
Frome, 312.
Fylde, 477.

G

Gainsborough, 427.
Garstang, 478.
Gateshead, 552.
Glanford Brigg, 426.
Glendale, 563.
Gloucester, 327.
Godstone, 36.
Goole, 512.
Gower, 589.
Grantham, 420.
Gravesend, 42.
Great Ouseburn, 487.
Greenwich, 26.
Guildford, 31.
Guilford, 231.
Guisbrough, 532.

H

Hackney, 9.
Hailsham, 70.
Halifax, 495.
Halstead, 198.
Haltwhistle, 557.
Hambleton, 33.
Hampstead, 6.
Hardingstone, 158.
Hartismere, 209.
Hartlepool, 542.
Hartley Wintney, 106.
Haslingden, 471.
Hastings, 67.
Hatfield, 134.
Havant, 86.
Haverfordwest, 596.
Hay, 606.
Hayfield, 444.
Headington, 148.
Helmsley, 529.
Helston, 299.
Hemel Hempstead, 137.
Hemsworth, 504.
Hendon, 126.
Henley, 146.
Henstead, 227.
Hereford, 339.
Hertford, 133.

Hexham, 556.
Highworth, 241.
Hinckley, 405.
Hitchin, 132.
Holbeach, 417.
Holbeck, 498.
Holborn, 12.
Hollingbourn, 50.
Holsworthy, 288.
Holywell, 614.
Honiton, 270.
Hoo, 44.
Horncastle, 422.
Horsham, 78.
Houghton-le-Spring, 548.
Howden, 517.
Hoxne, 210.
Huddersfield, 494.
Hull, 520.
Hungerford, 112.
Hunslet, 497.
Huntingdon, 167.

I

Ipswich, 213.
Isle of Wight, 90.
Islington, 8.

K

Keighley, 491.
Kendal, 576.
Kensington, 1.
Kettering, 163.
Keynsham, 318.
Kidderminster, 377.
Kingsbridge, 275.
Kingsclere, 110.
Kings Lynn, 237.
Kings Norton, 386.
Kingston, 38.
Kington, 343.
Knaresborough, 488.
Knighton, 608.

L

Lambeth, 23.
Lampeter, 599.
Lancaster, 479.
Langport, 308.
Launceston, 291.
Ledbury, 337.
Leeds, 500.
Leek, 365.
Leicester, 410.
Leigh, 461.
Leighton Buzzard, 174.
Leominster, 342.
Lewes, 75.
Lewisham, 27.
Lexden, 196.
Leyburn, 536.

Newport (Monmouth), 582.
Newport (Salop), 359.
Newport Pagnell, 144.
Newton Abbot, 273.
Newtown, 611.
Northallerton, 534.
Northampton, 159.
North Aylesford, 43.
Northleach, 332.
Northwich, 449.
North Witchford, 182.
Norwich, 225.
Nottingham, 433.
Nuneaton, 391.

O

Oakham, 412.
Okehampton, 281.
Oldham, 469.
Ongar, 187.
Ormskirk, 458.
Orsett, 189.
Oswestry, 353.
Oundle, 165.
Oxford, 149.

P

Paneras, 7.
Pateley Bridge, 485.
Patrinton, 521.
Pembroke, 595.
Penkridge, 371.
Penrith, 566.
Penzance, 301.
Pershore, 383.
Peterborough, 166.
Petersfield, 103.
Petworth, 79.
Pewsey, 252.
Pickering, 530.
Plomesgate, 215.
Plymouth, 277.
Plympton St. Mary, 276.
Pocklington, 516.
Pontefract, 503.
Pontypool, 581.
Pontypridd, 584.
Poole, 262.
Poplar, 20.
Portsea Island, 87.
Potterspurty, 157.
Prescot, 457.
Presteigne, 607.
Preston, 476.
Prestwich, 467a.
Pwllheli, 623.

R

Radford, 432.
Reading, 118.
Redruth, 300.

Reeth, 538.
Reigate, 35.
Rhayader, 609.
Richmond (Surrey), 39.
Richmond (Yorkshire), 539.
Ringwood, 93.
Ripon, 486.
Risbridge, 202.
Rochdale, 470.
Rochford, 192.
Romford, 188.
Romney Marsh, 65.
Romsey, 98.
Ross, 338.
Rothbury, 564.
Rotherham, 509.
Royston, 131.
Rugby, 394.
Runcorn, 448.
Ruthin, 616.
Rye, 66.

S

Saddleworth, 493.
Saffron Walden, 201.
St. Albans, 135.
St. Asaph, 617.
St. Austell, 296.
St. Columb, 295.
St. Faiths, 224.
St. George Hanover Sq., 3.
St. George in-the-East, 17.
St. Germans, 292.
St. Giles, 10.
St. Ives, 168.
St. Neots, 169.
St. Olave Southwark, 22.
St. Saviour Southwark, 21.
St. Thomas, 271.
Salford, 466.
Samford, 212.
Scarborough, 525.
Scilly Islands, 302.
Sculcoates, 519.
Sedbergh, 482.
Selby, 513.
Settle, 483.
Sevenoaks, 47.
Shaftesbury, 258.
Shardlow, 437.
Sheffield, 508.
Sheppey, 60.
Shepton Mallet, 313.
Sherborne, 266.
Shiffnal, 349.
Shipston-on-Stour, 399.
Shoreditch, 14.
Skipton, 484.
Skirlaugh, 522.
Sleaford, 419.
Smallburgh, 221.
Solihull, 395.
Southam, 400.
Southampton, 96.
South Molton, 284.

M

Macclesfield, 446.
Machynlleth, 610.
Madeley, 350.
Maidstone, 49.
Maldon, 193.
Malling, 46.
Malmesbury, 243.
Malton, 526.
Manchester, 467.
Mansfield, 430.
Market Bosworth, 406.
Market Drayton, 357.
Market Harborough, 402.
Marlborough, 246.
Martley, 379.
Marylebone, 5.
Medway, 45.
Melksham, 248.
Melton Mowbray, 411.
Mere, 257.
Meriden, 389.
Merthyr Tydfil, 585.
Midhurst, 84.
Mildenhall, 207.
Mile End Old Town, 19.
Milton, 59.
Mitford, 233.
Monmouth, 578.
Morpeth, 559.
Mutford, 218.

N

Nantwich, 451.
Narberth, 594.
Neath, 587.
Newark, 435.
Newbury, 111.
Newcastle-in-Emlyn, 598.
Newcastle-under-Lyme, 362.
Newcastle-upon-Tyne, 553.
Newent, 326.
New Forest, 95.
Newmarket, 180.

South Shields, 551.
 South Stoneham, 97.
 Southwell, 434.
 Spalding, 416.
 Spilsby, 423.
 Stafford, 360.
 Staines, 123.
 Stamford, 414.
 Stepney, 18.
 Steyning, 77.
 Stockbridge, 99.
 Stockport, 445.
 Stockton, 541.
 Stoke Damerel, 279.
 Stokesley, 533.
 Stoke-upon-Trent, 364.
 Stone, 361.
 Stourbridge, 376.
 Stow, 208.
 Stow-on-the-Wold, 333.
 Strand, 11.
 Stratford-on-Avon, 397.
 Stratton, 289.
 Stroud, 329.
 Sturminster, 259.
 Sudbury, 203.
 Sunderland, 550.
 Swaffham, 239.
 Swansea, 588.

Thrapston, 164.
 Ticehurst, 71.
 Tisbury, 256.
 Tiverton, 283.
 Todmorden, 492.
 Torrington, 286.
 Totnes, 274.
 Towcester, 156.
 Tregaron, 602.
 Truro, 297.
 Tunbridge, 48.
 Tynemouth, 554.

U

Uckfield, 72.
 Ulverston, 481.
 Uppingham, 413.
 Upton-on-Severn, 381.
 Uttoxeter, 367.
 Uxbridge, 124.

W

Wakefield, 502.
 Wallingford, 116.
 Walsall, 373.
 Walsingham, 234.
 Wandsworth, 24.
 Wangford, 217.
 Wantage, 115.
 Ware, 129.
 Wareham, 263.
 Warminster, 251.
 Warrington, 460.
 Warwick, 396.
 Watford, 136.
 Wayland, 232.
 Weymouth, 264.
 Wellingborough, 162.
 Wellington (Salop), 358.
 Wellington (Somerset), 305.
 Wells, 314.
 Wem, 355.
 Weobly, 340.
 West Ashford, 53.
 Westbourne, 85.
 West Bromwich, 374.

Westbury, 250.
 Westbury-on-Severn, 325.
 West Derby, 456.
 West Ham, 185.
 Westhampnett, 82.
 Westminster, 4.
 West Ward, 575.
 Wetherby, 489.
 Weymouth, 264.
 Wharfedale, 490.
 Wheatenhurst, 328.
 Whitby, 531.
 Whitchurch (Hants), 108.
 Whitchurch (Salop), 356.
 Whitechapel, 16.
 Whitehaven, 572.
 Whittlesey, 183.
 Wigan, 459.
 Wigton, 570.
 Williton, 303.
 Wilton, 255.
 Wimborne, 261.
 Wincanton, 311.
 Winchester, 100.
 Windsor, 122.
 Winslow, 143.
 Wirral, 453.
 Wisbech, 184.
 Witham, 197.
 Witney, 152.
 Woburn, 173.
 Wokingham, 119.
 Wolstanton, 363.
 Wolverhampton, 372.
 Woodbridge, 214.
 Woodstock, 151.
 Woolwich, 28.
 Worcester, 380.
 Worksop, 429.
 Wortley, 506.
 Wrexham, 615.
 Wycombe, 141.

Y

Yarmouth, 219.
 Yeovil, 310.
 York, 515.

T

Tadcaster, 514.
 Tamworth, 369.
 Taunton, 306.
 Tavistock, 280.
 Teesdale, 544.
 Tenbury, 378.
 Tendring, 194.
 Tenterden, 52.
 Tetbury, 330.
 Tewkesbury, 336.
 Thakeham, 80.
 Thame, 147.
 Thanet, 61.
 Thetford, 240.
 Thingoe, 205.
 Thirsk, 528.
 Thornbury, 323.
 Thorne, 511.

INDEX OF SUB-DISTRICTS.

[This alphabetical arrangement places the Registration Sub-Districts (or Registrars' Districts) having compound names in the order indicated by the usual pronunciation of those names; thus, East Grinstead will be found under the letter E, and not under G; St. James under the letter S, and not as "James, St." The number against each Sub-District, in the third column, refers to its numerical place in the Tables of Abstracts; thus, Abbey Holme (570; 2) is the 2d Sub-District of the Wigton District, No. 570.]

SUB-DISTRICT.	DISTRICT.	No.	SUB-DISTRICT.	DISTRICT.	No.	SUB-DISTRICT.	DISTRICT.	No.
A			B					
Abbey	Bath	317; 3	Ardleigh	Tendring	194; 5	Baschurch	Ellesmere	354; 4
Abbey Holme	Wigton	570; 2	Ardley	Wakefield	502; 7	Basford	Basford	431; 3
Abbots Bromley	Uttoxeter	367; 2	Ardwick	Chorlton	465; 2	Basingstoke	Basingstoke	107; 1
Abbotsbury	Weymouth	264; 4	Arkholve	Lunedale	480; 4	Bassingham	Newark	435; 2
Abbots Langley	Watford	136; 4	Arncliffe	Settle	483; 5	Bath	Bath	317; 7
Aberdare	Merthyr Tydfil	585; 4	Arnold	Basford	431; 5	Bathwick	Bath	317; 2
Aberdaron	Pwllheli	623; 3	Artillery	Whitechapel	16; 1	Batley	Dewsbury	501; 2
Aberford	Tadcaster	514; 1	Arundel	East Preston	81; 3	Battersea	Wandsworth	24; 2
Abergavenny	Abergavenny	579; 3		(Worthing).		Battle	Battle	68; 3
Abergele	St. Asaph	617; 2	Ashborne	Ashborne	440; 3	Battlefield	Atcham	351; 6
Abergwessin	Builth	603; 1	Ashburton	Newton Abbot	273; 4	Bawdeswell	Mitford	233; 3
Aberystwith	Bedwelty	580; 1	Ashby-de-la-Zouch	Ashby-de-la-Zouch	407; 3	Bawtry	Doncaster	510; 5
Abingdon	Aberystwith	601; 2	Ashford	West Ashford	53; 2	Beaconsfield	Amersham	139; 5
Abthorpe	Abingdon	114; 2	Ashley	Clifton	321; 2	Beaminstor	Beaminstor	267; 4
Acerington	Towcester	156; 1	Ashover	Chesterfield	441; 1	Beaumaris	Bangor	625; 1
Acton	Haslingden	471; 5	Ashton-in-Makerfield	Wigan	459; 7	Beebles	Wangford	217; 2
Addingham	Brentford	125; 5	Ashton Town	Ashton-under-Lyne	468; 2	Beckley	Rye	66; 2
Addingham	Skipton	484; 6	Askrigg	Aysgarth	537; 1	Bedale	Bedale	535; 1
Alberbury	Bourn	351; 4	Aslackby	Bourn	415; 2	Bedford and Cardington	Bedford	170; 5
Albrighton	Wigan	459; 2	Aspull	Wigan	459; 2	Bedford and Kempston	Bedford	170; 5
Albury	Shiffnal	349; 1	Aston Clinton	Aylesbury	142; 3	Bedlington	Morpeth	559; 2
Alcester	Guildford	31; 3	Aswarby	Sleaford	419; 5	Bedminster	Bedminster	319; 1
Aldbrough	Alcester	398; 2	Atcham	Atcham	359; 7	Begelly	Narberth	594; 6
Aldbrough	Richmond (Yrks.)	539; 4	Atherstone	Atherstone	390; 1	Beighton	Rotherham	509; 1
Aldeburgh	Skirlaugh	522; 3	Atherstone	Atherstone	390; 1	Belbroughton	Bromsgrove	385; 2
Aldeby	Plomesgate	215; 5	Atherstone	Leigh	461; 4	Belford	Belford	561; 1
Alderbury	Loddon	229; 1	Attercliffe	Sheffield	508; 6	Belgrave	St. George Hanover-sq.	3; 3
Alderley	Alderbury	254; 1	Attleborough	Wayland	232; 1	Bellingham	Bellingham	558; 1
Aldgate	Macclesfield	446; 8	Audenshaw	Ashton-under-Lyne	468; 3	Belper	Belper	439; 3
Aldington	Whitechapel	16; 7	Audley	Newcastle-under-Lyme	362; 3	Bennington	Boston	418; 2
Aldridge	East Ashford	54; 1	Aughton	Ormskirk	458; 2	Bennington	Newark	435; 4
Alford	Walsall	373; 4	Axbridge	Axbridge	315; 4	Bentham	Settle	483; 1
Alfreton	Spilsby	423; 5	Axminster	Axminster	269; 2	Bere Regis	Wareham	263; 4
Allendale	Belper	439; 5	Aycliffe	Axminster	269; 2	Berkeley	Thornbury	323; 3
Allerton	Hexham	556; 3	Aylesbury	Darlington	540; 2	Berkhampstead	Berkhampstead	138; 1
Allhallows, Barking	Pickering	530; 4	Aylesford	Aylesbury	142; 2	Berwick Street	Westminster	4; 3
All Saints	London City	13; 8		Malling	46; 1	Berwick-upon-Tweed	Westminster	562; 2
All Saints	Birmingham	387; 9				Bettwsycoed	Llanrwst	618; 2
All Saints	Hastings	67; 2				Beverley	Beverley	518; 2
All Saints	Maldon	193; 3				Bewdley	Kidderminster	377; 5
All Saints	Newcastle-on-Tyne	553; 4				Bexhill	Battle	68; 1
All Saints	Northampton	159; 2				Bexley	Dartford	41; 1
All Souls	Marylebone	5; 1				Bibury	Northleach	332; 1
Almondsbury	Huddersfield	494; 7				Bicester	Bicester	150; 2
Almondsbury	Thornbury	323; 1				Bickerstaffe	Ormskirk	458; 1
Alnwick	Alnwick	560; 2				Bideford	Bideford	287; 1
Alphington	St. Thomas	271; 8				Bidford	Alcester	398; 4
Alresford	Alresford	104; 2				Biggleswade	Biggleswade	171; 2
Alston	Alston	565; 1				Billesdon	Billesdon	403; 1
Alston	Preston	476; 4				Billingham	Sleaford	419; 1
Altarnon	Launceston	291; 1				Billington	Blackburn	474; 1
Alton	Alton	105; 1				Bilston	Wolverhampton	372; 7
Alton	Cheadle	366; 1				Binbrook	Louth	424; 3
Altrincham	Altrincham	447; 2				Bingham	Bingham	436; 1
Alverstone	Alverstone	88; 1				Bingley	Keighley	491; 1
Alverthorpe	Wakefield	502; 6				Binstead	Alton	105; 2
Ambleside	Kendal	576; 1				Birkenhead	Birkenhead	454; 1
Amersham	Amersham	139; 3				Birtle	Bury	463; 4
Amesbury	Amesbury	253; 2				Bishop Auckland	Auckland	543; 1
Amlwch	Anglesey	627; 4				Bishops Cannings	Devizes	247; 1
Ampthill	Ampthill	172; 2				Bishops Castle	Clun	345; 2
Amroth	Narberth	594; 3				Bishops Frome	Bromyard	341; 2
Amwell	Holborn	12; 5				Bishops Lydeard	Taunton	306; 5
Ancoats	Manchester	467; 1				Bishops Tawton	Barnstaple	285; 6
Andover	Andover	109; 3				Bishopstone	Wilton	255; 2
Anston	Worksop	429; 3				Bishop Stortford	Bishop Stortford	130; 3
Antony	St. Germans	292; 1				Bishops Waltham	Droxford	101; 1
Appleby	East Ward	574; 1				Bisley	Stroud	329; 3
Appleton Roebuck	Tadcaster	514; 3				Bitton	Keynsham	318; 1
Appleton-upon-Wisk	Northallerton	534; 1				Blackawton	Kingsbridge	275; 1
						Blackburn	Blackburn	474; 4

Table with columns: SUB-DISTRICT, DISTRICT, No. and SUB-DISTRICT, DISTRICT, No. listing various districts and their populations.

C

Table with columns: SUB-DISTRICT, DISTRICT, No. and SUB-DISTRICT, DISTRICT, No. listing various districts and their populations.

E

D

Table with 3 columns: SUB-DISTRICT, DISTRICT, No. Contains entries for districts F, G, and H, listing sub-districts and their respective district numbers.

Table with 3 columns: SUB-DISTRICT, DISTRICT, No. Contains entries for districts I and L, listing sub-districts and their respective district numbers.

Table with 9 columns: SUB-DISTRICT, DISTRICT, No., SUB-DISTRICT, DISTRICT, No., SUB-DISTRICT, DISTRICT, No. Lists various sub-districts and their corresponding districts and population numbers.

Table with 9 columns: SUB-DISTRICT, DISTRICT, No., SUB-DISTRICT, DISTRICT, No., SUB-DISTRICT, DISTRICT, No. Continues the list of sub-districts and districts from page 268.

Table with 9 columns: SUB-DISTRICT, DISTRICT, No., SUB-DISTRICT, DISTRICT, No., SUB-DISTRICT, DISTRICT, No. Lists various sub-districts and districts with their respective numbers.

Table with 9 columns: SUB-DISTRICT, DISTRICT, No., SUB-DISTRICT, DISTRICT, No., SUB-DISTRICT, DISTRICT, No. Lists various sub-districts and districts with their respective numbers, including a section for 'T' and 'U'.

SUB-DISTRICT.	DISTRICT.	No.	SUB-DISTRICT.	DISTRICT.	No.	SUB-DISTRICT.	DISTRICT.	No.
West Sheffield	Sheffield	508; 1	Wimbledon	Kingston	38; 1	Wootton Bassett	Cricklade	242; 1
West Sunderland	Sunderland	550; 4	Wimborne	Wimborne	261; 3	Wootton Wawen	Stratford-on-Avon	397; 5
West Worcester	Worcester	380; 1	Wincanton	Wincanton	311; 3	Worfield	Bridgnorth	348; 3
West Wycombe	Wycombe	141; 3	Winchester	Winchester	100; 3	Workington	Cockermouth	571; 3
West Wymer	Norwich	225; 5	Windsor	Windsor	122; 2	Worksop	Worksop	429; 1
Wetheral	Carlisle	569; 1	Wing	Leighton Buzzard	174; 2	Worlington	Mildenhall	207; 1
Wetherby	Wetherby	489; 1	Wingham	Eastry	62; 2	Worsbrough	Barnsley	505; 4
Weymouth	Weymouth	264; 2	Winkleigh	Torrington	286; 2	Worsley	Barton-upon-Irwell	464; 1
Whalley	Clitheroe	473; 5	Winlaton	Gateshead	552; 4	Worth	East Grinstead	73; 3
Wheatley	Headington	148; 1	Winslow	Winslow	143; 1	Worthing	East Preston	81; 1
Whickham	Gateshead	552; 3	Winterbourne	Amesbury	253; 3	Worthys	Winchester	100; 2
Whitby	Whitby	531; 2	Winterton	Glanford Brigg	426; 2	Wortley	Bramley	499; 3
Whitechurch	Cardiff	583; 1	Winwick	Warrington	460; 2	Wortley	Wortley	506; 4
Whitechurch	Whitchurch (Hants)	108; 1	Wirksworth	Belper	439; 6	Wotton-under-Edge	Dursley	324; 1
Whitchurch	Whitchurch (Salop)	356; 1	Wisbech	Wisbech	184; 2	Wragby	Horncastle	422; 1
Whitchurch Canonorum	Bridport	268; 3	Witchampton	Wimborne	261; 2	Wray	Lunesdale	480; 2
Whitechapel Church	Whitechapel	16; 5	Witham	Witham	197; 2	Wrenbury	Nantwich	451; 4
Whitechapel North	Whitechapel	16; 4	Witheridge	South Molton	284; 1	Wrexham	Wrexham	615; 3
Whitecross Street	Holborn	12; 10	Withern	Louth	424; 1	Writtle	Chelmsford	191; 3
Whitehaven	Whitehaven	572; 2	Withyham	East Grinstead	73; 1	Wrotham	Malling	46; 3
Whitford	Holywell	614; 1	Witley	Hambleton	33; 1	Wuerdle	Rochdale	470; 8
Whitkirk	Hunslet	497; 2	Witney	Martley	379; 2	Wybunbury	Nantwich	451; 1
Whitley	Pontefract	503; 2	Witton	Blackburn	474; 7	Wye	East Ashford	54; 3
Whitmore	Newcastle-under-Lyme	362; 1	Wiveliscombe	Wellington (Somerset)	305; 1	Wyke	Westhampnett	82; 2
Whitstable	Blean	57; 3	Wivenhoe	Lexden	196; 1	Wymondham	Forehoe	226; 2
Whittlesey	Whittlesey	183; 1	Woburn	Woburn	173; 1			
Whitwick	Ashby-de-la-Zouch	407; 4	Woking	Guildford	31; 1			
Whitworth	Rochdale	470; 10	Wokingham	Wokingham	119; 1			
Whixley	Great Ouseburn	487; 2	Wolsingham	Weardale	545; 3			
Wickford	Billericay	190; 3	Wolstanton	Wolstanton	363; 1			
Wickhambrook	Risbridge	202; 2	Wolverhampton Eastern	Wolverhampton	372; 5			
Wickham Market	Plomesgate	215; 3	Wolverhampton Western	Wolverhampton	372; 4	Yalding	Maidstone	49; 1
Wigan	Wigan	459; 3	Wolverley	Kidderminster	377; 2	Yapton	Westhampnett	82; 4
Wiggenhall	Downham	238; 1	Wombourne	Wolverhampton	372; 3	Yarkhill	Ledbury	337; 2
Wigston	Blaby	404; 1	Wombridge	Wellington (Salop)	358; 3	Yarm	Stockton	541; 1
Wigton	Wigton	570; 1	Woodbridge and Wilford	Woodbridge	214; 3	Yarmouth Northern	Yarmouth	219; 2
Wilford	Basford	431; 7	Woodbridge Out	Woodbridge	214; 4	Yarmouth Southern	Yarmouth	219; 1
Willenhall	Wolverhampton	372; 6	Woodbury	St. Thomas	271; 3	Yatton	Bedminster	319; 3
Willesden	Hendon	126; 3	Woodchurch	Wirral	453; 3	Yeadon	Wharfedale	490; 4
Willingham	Chesterton	177; 1	Woodstock	Woodstock	151; 2	Yealmpton	Plympton St. Mary	276; 1
Willingham	Gainsborough	427; 5	Woodton	Loddon	229; 3	Yeovil	Yeovil	310; 4
Williton	Williton	303; 3	Wooler	Glendale	563; 2	Yetminster	Sherborne	266; 1
Wilmslow	Altrincham	447; 1	Woolwich Arsenal	Woolwich	28; 3	Yoxall	Lichfield	370; 2
Wilsden	Bradford (Yrks.)	496; 9	Woolwich Dockyard	Woolwich	28; 2	Ysptyty	Llanrwst	618; 3
Wilton	Wilton	255; 1				Ystradgunlais	Neath	587; 4
						Ystradvelltey	Neath	587; 3
						Ystradyfodwg	Pontypridd	584; 3

Y

INDEX OF CERTAIN TOWNS.

Towns of which the Names differ from those of the District and Sub-district in which they are respectively situated.

NAME OF TOWN.	SUPERINTENDENT REGISTRAR'S DISTRICT.	SUB-DISTRICT.	Number of District and Sub-district.
Aberavon	Neath	Margam	587; 1
Bacup	Haslingden	Newchurch	471; 1
Barrow-in-Furness	Rochdale	Whitworth	470; 10
Bedworth	Ulverston	Dalton	481; 4
Blackpool	Foleshill	Foleshill	392; 1
Bognor	Fylde	Poulton-le-Fylde	477; 3
Brandon	Westhampnett	South Bersted	82; 3
Chatham	Thetford	Methwold	240; 1
Church (Lanc.)	Medway	Rochester and Gillingham	45; 1, 2
Claycross	Blackburn	Oswaldtwisle	474; 5
Crewe	Chesterfield	Ashover	441; 1
Dawlish	Nantwich	Wybunbury	451; 1
Dereham	Newton Abbot	Teignmouth	273; 1
Devonport	Mitford	East Dereham	233; 4
Droylesden	East Stonehouse	Comprises the whole of the Sub-districts	278; 1
Fleetwood	Stoke Damerel	Audenshaw	279; 1-5
Godmanchester	Ashton-under-Lyne	Poulton-le-Fylde	468; 3
Gosport	Fylde	Huntingdon	477; 3
Great Malvern	Huntingdon	Huntingdon	167; 4
Guiseley	Alverstokey	Alverstokey	88; 1
Heckmondwike	Upton-on-Severn	Hanley	381; 1
Hounslow	Wharfedale	Yeadon	490; 4
Ironbridge	Dewsbury	Liversedge	501; 4
Llandudno	Brentford	Isleworth	125; 1
Llanidloes	Madeley	Madeley	350; 2
Maidenhead	Conway	Creuddyn	626; 2
Melcombe Regis	Newtown	Llanidloes, Upper and Lower	611; 1, 2
Middlesborough	Cookham	Bray and Cookham	120; 1, 2
New Brighton	Weymouth	Upway and Weymouth	264; 1, 2
Redditch	Guisebrough	Yarm	541; 1
Seaham Harbour	Birkenhead	Kirkleatham	532; 3
Sheerness	Bromsgrove	Wallasey	454; 3
Sidmouth	Alcester	Tardebegg	385; 3
Slough	Easington	Studley	398; 1
Southport	Sheppey	Easington	547; 1
Southwold	Honiton	Minster	60; 1
Stalybridge	Eton	Ottery St. Mary	270; 2
Staveley	Ormskirk	Eton and Burnham	140; 2, 3
Tyldesley	Blything	North Meols	458; 5
Ventnor	Ashton-under-Lyne	Wenhaston	216; 3
Welshpool	Chesterfield	Dukinfield and Hartshead	468; 6, 7
Weston-super-Mare	Leigh	Eckington	441; 4
Widnes	Isle of Wight	Atherton	461; 4
	Fordeu (Montgomery)	Godshill	90; 4
	Llanfyllin	Montgomery and Pool	612; 1, 3
	Axbridge	Llansaintffraid	613; 2
	Prescot	Banwell	315; 3
		Farnworth	457; 4

ALPHABETICAL INDEX

TO

REGISTRAR-GENERAL'S THIRTY-SEVENTH ANNUAL
REPORT AND APPENDIX.

	PAGES
ACT, new Registration	v
AGES; Returns of Ages at Marriage and of Parents at the births of Children in all cases requisite	vi
of Persons married in 1874	xi-xii
Mean Age at Marriage	xii
at Marriage; improvement in the Returns, 1855-1874	xi
at Marriage; imperfect returns of, in groups of Counties in 1874 (Table)	xii
Deaths of Males and Females registered at different Ages in England in each of the Years 1838-74. (Tables 20, 21, pp. lv, lvi.)	xv-xvi
Mortality of Males and Females at different Ages in England in the Year 1874, and the average in 10 Years, 1856-65	xv-xvi
Mortality of Males and Females at 12 groups of Ages in England, 1838-74. (Tables 22-25.)	lvii-lx
Mortality of Persons, Males and Females, at 12 groups of Ages in Divisions and Counties. (Tables 26, 27.)	lxi-lxii
of 299,696 Persons married in 1874, distinguishing Bachelors, Spinners, Widowers, Widows	26-28
at Death of Males and Females registered in 1874 in Divisions, Counties, and Districts	120-141
at Death of Males and Females in England registered from different Causes, in 1874	144-149
at Death of Males and Females in England registered from different Supplemental Causes, in 1874	150-153
at Death of Males and Females in London registered from different Causes, in 1874	154-159
(See also MARRIAGES, BIRTHS, and DEATHS.)	
ALCOHOLISM. (See INTEMPERANCE and DELIRIUM TREMENS.)	
APPENDIX TABLES	226-258
AREA in Statute Acres of each Division, County, District, and Sub-district	30-84
European States and large Cities (Tables)	xxix-xxx
in Acres and Hectares of the United Kingdom in 1874. (Table 45.)	lxxix
of the Islands in the British Seas. (Table 47.)	lxxx
ARMY; Strength and Mortality of the Army at Home and Abroad. (Tables 51-58, pp. lxxxiv-lxxxvi.)	xxv-xxvi
Average Strength of the British Army at Home in 1874. (Table 51, p. lxxxiv.)	xxv
Average Strength and Proportion per cent. of the British Army at Home and Abroad in each of the Years 1861-74. (Table 52, p. lxxxiv.)	xxv
Mortality of the Army at Home in 1874. (Table 53, p. lxxxiv.)	xxv
Average Strength of the British Army Abroad in each of the Years 1871-74. (Table 54.)	lxxxv

ARMY—continued.

	PAGES
Number of Deaths in the British Army at Home and Abroad, 1871-74. (Table 55.)	lxxxv
Annual Rate of Mortality per 1000 amongst Officers and Men in the Army at Home and Abroad, 1858-74. (Table 56.)	lxxxv
Strength at Home and Abroad in 1861 and 1871, showing the Numbers and Proportion per cent. born in the different parts of the United Kingdom and elsewhere. (Table 57.)	lxxxvi
Deaths in Army Abroad of Officers and Men belonging to Great Britain and to England and Wales, 1858-74. (Table 58.)	lxxxvi
AUSTRIA; Average Annual Proportion to Population of Persons married, Births, and Deaths, 1853-72, and in 1873 and 1874	xxviii
Density and Proximity of Population in 1874 (Table)	xxix
Marriage, Birth, and Death Rates compared with those of other European States. (Table 65.)	xciii
Estimated Population; Number, and Proportion to Population, of Persons married, Births, and Deaths, in each of the Years 1853-74. (Table 69.)	xcv
BIRTHS in 1874	xiv
to a Marriage	xiv
Legitimate to every 100 Married Women, 1861-70	xiv
out of Wedlock	xv
registered in England, and excess over Deaths, in each Year, 1838-74. (Table 1.)	xxxvi
Number of Persons living to one Birth (Table 2.)	xxxvii
Legitimate and Illegitimate in England in 1842 and in the Years 1845-74, and Proportion of Males to Females. (Table 11.)	xlvi
proportion of Illegitimate Children to every 100 Births in the several Counties of England in each of the Years 1864-74. (Table 12.)	xlvii
registered in England in each Quarter of the Years 1838-74. (Table 13.)	xlviii
proportional Number of Births in each Quarter to 1,000 Births in the average Quarter of the Years 1838-74. (Table 14.)	xlix
in Counties, in 1874. Numbers, Sex, Legitimate and Illegitimate; Proportions of Male to Female Births, Legitimate and Illegitimate. (Table 15.)	1
proportion of Male and Female Children born in the several Counties of England during each of the Years 1864-74. (Table 16.)	li
in Fifty large Town Districts in 1874. (Table 35.)	lxix
in Twenty-one large Towns of the United Kingdom in 1874. (Table 36.)	lxx
in London in the Years 1862-74, distinguishing Males and Females. (Table 38.)	lxxi
excess over Deaths in London in each of the Years 1862-74. (Table 38.)	lxxi
in the United Kingdom in 1874. (Table 45.)	lxxix
in the Islands of the British Seas in the Years 1851-74. (Table 47.)	lxxx
of British Subjects at Sea, in the Years 1856-74. (Table 59.)	lxxxvii
registered in each of the Divisions, Counties, Districts, and Sub-districts in 1874, distinguishing Males and Females and the Illegitimate	30-84
excess over Deaths in each of the Divisions, Counties, Districts, and Sub-districts in 1874	30-84

	PAGES
BIRTHS—continued.	
registered in the Divisions and Counties (distinguishing Males and Females) in each of the Four Quarters of 1874	86-89
of Children born out of Wedlock registered in the Divisions and Counties (distinguishing Males and Females) in each of the Four Quarters of 1874	90-93
in Foreign States. (See FOREIGN STATES.)	
illegitimate. (See ILLEGITIMATE BIRTHS.)	
BIRTH-RATE in England in 1874	xiv
in certain Counties in 1874	xiv
in England in each of the Years 1838-74. (Table 2.)	xxxvii
in England in each Quarter of the Years 1838-74. (Table 13.)	xlviii
in Counties in each of the Years 1864-74. (Table 17.)	lii
in Fifty large Town Districts in 1874. (Table 35.)	lxix
in Twenty-one large Towns of the United Kingdom in 1874. (Table 36.)	lxx
in London in each of the Years 1862-74. (Table 38.)	lxxi
in the United Kingdom in 1874. (Table 46.)	lxxix
in Foreign States. (See FOREIGN STATES.)	
BRAIN DISEASES; Increased Fatality	222
BRONCHITIS; Mortality from, rapidly increasing	222
BUCHANAN, DR.; on the Results of Sanitary Works and Regulations	vi
BURNS AND SCALDS. (See VIOLENT DEATHS.)	
CANCER; attention required to its increasing fatality	221
CAUSES OF DEATH; of Seamen in the British Merchant Service in 1874. (Table 61.)	lxxxix
of Males and Females in England, at different Periods of Life, in 1874	144-149
(Supplementary Table) of Males and Females in England, at different Periods of Life, in 1874	150-153
of Males and Females in London at different Periods of Life, in 1874	154-159
of Males and Females in England, and in each of the Divisions and Counties, in 1874	160-183
(from certain zymotic and other Causes) in 1874, in the Divisions, Counties, and Districts of England	184-195
Dr. Farr's Letter to the Registrar General thereon	219-224
registered in England in each of the Years 1847-74. (Table 1.—App.)	226-231
rate of Mortality from, to a Million persons living in each of the Years 1859-74. (Table 2.—App.)	232-234
proportional Numbers dying from each Cause in 1874. (Table 3.—App.)	235
rate of Mortality from, during 25 Years, five periods of Five Years, and in 1870, 1871, 1872, 1873, and 1874. (Table 4.—App.)	236-239
in England, in 1874, arranged in the order of their fatality. (Table 5.—App.)	240
of Persons, Males and Females, in 1874, classified according to the nomenclature recommended by the Committee appointed by the Royal College of Physicians of London. (Table 24.—App.)	254-258
CENTENARIANS; deaths of reputed, during 1874. (Table 19.)	liv

	PAGES
CHILDBIRTH; excessive number of Deaths from	222
Deaths in 1874, at different Ages, of Women after Childbearing, classed under various Diseases, and neither referred to Childbirth nor to Metria in the Abstracts. (Table 11.—App.)	245
Deaths of Women in 1874 who were returned as pregnant, classed under certain Diseases. (Table 12.—App.)	246
Deaths from Metria and Childbirth in each of the 28 Years, 1847-74, and proportional Deaths of Mothers to Children born alive. (Table 13.—App.)	246
Deaths of Women in, and Mortality per 1,000 Children in Counties in 1874. (Table 14.—App.)	247
CONSOLS; average price of, 1852 to 1874, and in each Quarter of 1865-74. (Table 33.)	lxvii
CONSTITUTIONAL DISEASES	221
DEATHS in 1874	xv
at different Ages	xv
in Public Institutions	xxiv
in the British Army at home and abroad	xxv-xxvi
in the Royal Navy	xxvi
registered in England in each of the Years 1838-74. (Table 1.)	xxxvi
excess of Births over, in each of the Years 1838-74. (Table 1.)	xxxvi
number of Persons living to one Death. (Table 2.)	xxxvii
of reputed Centenarians. (Table 19.)	liv
registered in England at different Ages (Males and Females) in each of the Years 1838-74. (Tables 20, 21.)	lv-lvi
registered in England in each Quarter of the Years 1838-74. (Table 28.)	lxiii
proportional Number in each Quarter to 1,000 Deaths in the average Quarter, 1838-74. (Table 29.)	lxiv
in Fifty large Town Districts in 1874. (Table 35.)	lxix
in Twenty-one large Towns in 1874. (Table 36.)	lxx
in Public Institutions of London in each of the Years 1862-74. (Table 37.)	lxx
in London of Males and Females in each of the Years 1862-74. (Table 38.)	lxxi
and Meteorology in London in each of the Years 1840-74. (Table 40.)	lxxiii
in the United Kingdom in 1874. (Table 45.)	lxxix
in the Islands in the British Seas in each of the Years 1851-74. (Table 47.)	lxxx
in the British Army at home in 1874. (Table 53.)	lxxxiv
in the British Army at home and abroad in each of the Years 1871-74. (Table 55.)	lxxxv
of Officers and Men in the Army abroad belonging to Great Britain and to England and Wales in each of the Years 1858-74. (Table 58.)	lxxxvi
of British Subjects at Sea in each of the Years 1856-74. (Table 59.)	lxxxvii
of Merchant Seamen at Sea in each of the Years 1852-74. (Table 60.)	lxxxviii
at different Ages of Merchant Seamen in 1874. (Table 61.)	lxxxix
registered in each of the Divisions, Counties, Districts, and Sub-districts in 1874 (distinguishing Males and Females)	30-84
excess of Births over, in each of the Divisions, Counties, Districts, and Sub-districts in 1874	30-84
registered in each of the Four Quarters of 1874 (distinguishing Males and Females), in Divisions and Counties	94-97

DEATHS— <i>continued.</i>	PAGES
in 1874 in Public Institutions	100-118
of Males and Females at different Ages in 1874 in Divisions, Counties, and Districts	120-141
from different Classes of Disease (Dr. Farr's letter)	219-224
from several Causes in 18 of the largest English Towns in 52 weeks (1874). (Table 16.—App.)	250
in large Towns in each Year 1870-74, from Small-pox, Measles, Scarlet Fever, Diphtheria, Fever, and Diarrhœa. (Tables 18-23.—App.)	251-253
of Persons, Males and Females, in 1874, classified according to the nomenclature recommended by the Committee appointed by the Royal College of Physicians of London. (Table 24.—App.)	254-258
from Childbirth. (<i>See</i> CHILDBIRTH.)	
from different Causes. (<i>See</i> CAUSES OF DEATH.)	
from Diarrhœa. (<i>See</i> DIARRHŒA.)	
from Diphtheria. (<i>See</i> DIPHTHERIA.)	
from Fever. (<i>See</i> FEVER.)	
by Lightning. (<i>See</i> LIGHTNING.)	
from Manslaughter. (<i>See</i> MANSLAUGHTER.)	
from Measles. (<i>See</i> MEASLES.)	
from Murder and Infanticide. (<i>See</i> MURDER.)	
from Privation. (<i>See</i> PRIVATION.)	
from Scarlet Fever. (<i>See</i> SCARLET FEVER.)	
from Small-pox. (<i>See</i> SMALL-POX.)	
from Suicide. (<i>See</i> SUICIDE.)	
from Violence. (<i>See</i> VIOLENT DEATHS.)	
in Foreign States. (<i>See</i> FOREIGN STATES.)	
DEATH-RATE, Males and Females, at different Ages in 1874, compared with 1856-65	xvi
of Males and Females at different Ages	xv-xvi
in the four Seasons	xvi-xvii
in 50 Town Districts, 1871-74. (Table)	xviii
in Counties, and in Urban and Rural Districts	xvii-xxii
in the Three Decades 1841-50, 1851-60, 1861-70, in certain Districts of England and Wales. (Table)	xix
reduced in certain Districts by Sanitary Improvement.	xix-xx
at different ages in the District of Rothbury compared with the Healthy Districts and the South-eastern Division. (Table)	xxi
of Children under One Year of Age from All Causes in 18 large Towns, 1870-74. (Table)	xxii
of Children under One Year of Age in 1873-74. (Table)	xxiii
of Children under Five Years of Age in 1874, in certain Counties and large Towns	xxiii-xxiv
in the British Army at home and abroad. (Tables 53, 56, pp. lxxxiv-lxxxv.)	xxv-xxvi
in the Royal Navy at different Stations. (Table)	xxvi
in the Mercantile Marine, 1852-74. (Table 60, p. lxxxviii.)	xxvii
comparative, from Drowning, in the Royal Navy and in the Mercantile Marine, 1866-74. (Table)	xxvii
in European States. (<i>See also</i> FOREIGN STATES.)	
in European Cities. (Table)	xxx
in England in each Year, 1838-74. (Table 2.)	xxxvii
of Males and Females in England in each Year, 1838-74. (Table 18.)	liii
of Males and Females at different Ages in each Year, 1838-74, and in groups of Years. (Tables 22-25.)	lvii-lx

DEATH-RATE— <i>continued.</i>	PAGES
average annual, in 25 Years 1848-72, Persons, Males, and Females. (Table 26.)	lxi
of Persons, Males, and Females living at 12 groups of Ages in Divisions and Counties, 1874. (Tables 26-27.)	lxi-lxii
in each Quarter of the Years 1838-74. (Table 28.)	lxiii
in Counties in each of the Years 1864-74. (Table 30.)	lxv
in Town and Country Districts of England in each Quarter of the Years 1864-74. (Table 31.)	lxvi
in England and its 11 Registration Divisions in the Two Decades 1851-60 and 1861-70, and in 1874 and its Quarters. (Table 32.)	lxvi
in each Week of 1874 in Twenty-one large Towns of the United Kingdom. (Table 34.)	lxviii
in Fifty large Town Districts in 1874. (Table 35.)	lxix
from Seven Zymotic Diseases in Fifty large Town Districts in 1874. (Table 35.)	lxix
in Twenty-one large Towns of the United Kingdom in the Years 1870-74. (Table 36.)	lxx
in London, Males, Females, and Persons, in each Year, 1862-74. (Table 38.)	lxxi
in Five Groups of Metropolitan Districts in each Year 1840-74. (Table 39.)	lxxii
in the United Kingdom in 1874. (Table 46.)	lxxix
in the Army in the United Kingdom in 1874. (Table 53.)	lxxxiv
amongst Officers and Men in the British Army at home and abroad, 1858-74. (Table 56.)	lxxxv
amongst Merchant Seamen at Sea in each Year, 1852-74. (Table 60.)	lxxxviii
from the several Causes to 1,000,000 living in each of the Years 1859-74. (Table 2.—App.)	232-234
from the several Causes in 25 Years, five periods of Five Years, and in 1870, 1871, 1872, 1873 and 1874. (Table 4.—App.)	236-239
from certain Causes to 1000 living in Counties in 1874. (Table 6.—App.)	241
in 18 of the largest English Towns in 1874. (Table 17.—App.)	250
in 1874, and average Annual 1870-74, in 17 large Towns, from Diarrhœa, Diphtheria, Fever, Measles, Scarlet Fever, and Small-pox. (Tables 18-23.—App.)	251-253
DELIRIUM TREMENS, Increase of Deaths from, in 1874	221
DENMARK; Average Annual Proportion to Population of Persons married, Births, and Deaths, 1853-72, and in 1873 and 1874	xxviii
Density and proximity of Population in 1874. (Table.)	xxix
Marriage, Birth, and Death Rates compared with those of other European States. (Table 65.)	xciii
Population; Number and Proportion to Population of Persons married, Births, and Deaths, 1850 to 1874. (Table 67.)	xciv
DENSITY and proximity of European States and Cities. (Tables)	xxix-xxx
in Districts of London. (Table 39.)	lxxii
Persons to an Acre in 1871 in England and its 11 Registration Divisions. (Table 32.)	lxvi
Persons to an Acre in London and 20 large Towns in 1874. (Table 36.)	lxx
Acres to a Person and Hectares to a Person in the United Kingdom in 1874. (Table 46.)	lxxix
DEVELOPMENTAL DISEASES	222
DIARRHŒA; its spread among Children, and probable cause	220
Deaths and Mortality from, in Large Towns, 1870-74. (Table 23.—App.)	253

	PAGES
DIGESTIVE ORGANS, Deaths from diseases of, in 1874	222
DIPHTHERIA, its greater fatality in Country Districts, and probable cause	219-220
Deaths and Mortality from, in Large Towns, 1870-74. (Table 21.—App.)	252
DISEASES. (See CAUSES OF DEATH.)	
DISTRICTS : changes in the constitution of, during 1874. (Table 75.)	xcviii
Alphabetical Index of	259-262
DIVISIONS of England : Mortality of Persons, Males and Females, living at 12 groups of Ages, in 1874. (Table 26.)	
Average Annual Rate of Mortality in the Eleven Divisions in the Two Decades 1851-60 and 1861-70; and in the Four Quarters of 1874. (Table 32.)	lxi
DIVORCES ; Marriages of Divorced Men and Women in each of the 14 Years 1861-74, and the Districts in which they were celebrated in 1874. (Table 10, p. xlv.)	
Decrees in 1874	xi
DROWNING ; Deaths by, in the Merchant Service and Royal Navy, 1866-74	
	xxvii
EDUCATION ; progress of, as indicated by Signatures to Marriage Registers	
neglect of, in certain Counties	xii-xiii
in England and Scotland.	xiii
EMIGRATION in 1874	
Effect of, on Population	vii-viii
from the United Kingdom, in each of the Years 1815 to 1874. (Table 48.)	viii
from the United Kingdom in 1874, distinguishing the Destination, Sex, Age, Condition, Occupation, and Origin of the Emigrants, (Tables 49-50.)	lxxxix
EMIGRANTS, Number and Nationality of, 1863-74	
to the United States and the North American Colonies, distinguishing origin, 1873-74	vii
to the Australian Colonies, distinguishing origin, 1873 and 1874	viii
estimated Number returning, 1861-70	viii
ENGLAND AND WALES ; Summary of results of Registration in Years 1837-74	
Area, Estimated Population ; Marriages, Births, and Deaths in 1874. (Table 45.)	xxiv
Density ; and Proportion, per 1,000, of Marriages, Births, and Deaths to the Population in 1874. (Table 46.)	lxxix
Emigration from, distinguishing Destination, in 1874. (Table 49.)	lxxxii
Estimated Population of both Sexes in the middle of each of the Years 1801-1876. (Table 62.)	xc
Estimated Population ; Number, and Proportion to Population, of Persons Married, of Births, and Deaths, 1853-74. (Table 66.)	xciv
ENTHETIC DISEASES	
	221
EPIDEMICS, warnings of	
	vi
EXECUTIONS, double the average	
	222
EXPECTATION OF LIFE among Married and Un-married persons	
	xvi

	PAGES
FARR, WILLIAM, M.D. ; Letter to the Registrar-General on the Causes of Death in 1874	219-224
FEVER ; Deaths in 1874 from each form	
Mortality from Typhus Fever in each Year, 1869-74	220
Deaths in England at different Ages from Fever, in the 15 Years, 1860-74. (Table 8.—App.)	220
Deaths registered and Proportional Number to 10,000 Persons living, and to 1,000 Deaths, in each of the Years 1850-74. (Table 9.—App.)	243
Deaths and Mortality from, in Large Towns, 1870-74. (Table 22.—App.)	243
FOREIGN CITIES ; Weekly Returns from	
Density, Proximity, and Mortality in 1874. (Table)	vi
Area and Density in 1874. (Table)	xxx
FOREIGN STATES ; Comparative Marriage, Birth, and Death Rates in the 20 Years 1853-72, and in 1873 and 1874. (Table)	
Comparative Density and Proximity of Population in 1874. (Table)	xxviii
Comparative Marriage, Birth, and Death Rates in the Years 1853-74. (Table 65.)	xxix
Estimated Population : Number, and Proportion to Population, of Persons married, Births, and Deaths. (Tables 67-74.)	xciii
(See also AUSTRIA, DENMARK, FRANCE, ITALY, THE NETHERLANDS, PRUSSIA, SPAIN, SWEDEN.)	xciv-xcviii
FRANCE ; Average Annual Proportion to Population of Persons married, Births, and Deaths, 1853-72 ; and in 1873 and 1874	
Density and Proximity of Population in 1874. (Table)	xxviii
Marriage, Birth, and Death Rates compared with those of other European States. (Table 65.)	xxix
Estimated Population : Number, and Proportion to Population, of Persons married, Births, and Deaths, in each of the Years 1853-74. (Table 72.)	xciii
GOUT ; Fatality of, in quinqueniads, 1850-74	
	221
GREAT BRITAIN ; Area, Estimated Population, Marriages, Births, and Deaths in 1874. (Table 45.)	
Proportion per 1000 of Marriages, Births, and Deaths to Population in 1874. (Table 46.)	lxxix
HARBOTTLE VILLAGE, Health of. (Note)	
	xxi
HYDROPHOBIA ; prevalence of, in 1874	
	221
ILLEGITIMATE BIRTHS ;	
decrease in registration of, since 1845	xv
proportional Number to 100 Spinsters and Widows, aged 15-55, in the Decades 1851-60 and 1861-70	xv
in England in 1842 and in the Years 1845-74, Proportion of Males to Females, and Proportion to total Births. (Table 11.)	xv
Proportion to 100 Births in the Counties of England in each of the Years 1864-74. (Table 12.)	xlvi
registered in each of the Divisions, Counties, Districts, and Sub-districts in 1874 (distinguishing Males and Females)	xlvi
registered in the Divisions and Counties (distinguishing Males and Females) in each of the Four Quarters of 1874	30-84
	90-93

	PAGES
IMMIGRANTS in the Years 1870-74	viii
INFANTICIDE and MURDER; Deaths in England at different Ages during the Year 1874 (Males and Females)	211-212
in each of the Eleven Divisions during the Year 1874 (Males and Females)	213
INFANT MORTALITY in 18 Large Towns 1870-74. (Table)	xxii
in certain Large Towns from different Causes. (Table)	xxiii
INSTITUTIONS; Deaths in 1874 in the principal Public Institutions of England	xxiv, 100-118
of London; Deaths in each of the Years 1862-74. (Table 37.)	lxx
INTEMPERANCE; Increase of Deaths from, during 1874	221
IRELAND; Defective Registration	xxv
Emigrants from, distinguishing Destination, in 1874. (Table 49.)	lxxxii
Area, Estimated Population, Marriages, Births, and Deaths in 1874. (Table 45.)	lxxix
Density; and Proportion, per 1000, of Marriages, Births, and Deaths to the Population in 1874. (Table 46.)	lxxix
Estimated Population of both Sexes in the middle of each of the Years 1801-1876. (Table 62.)	xci
ISLANDS in BRITISH SEAS; Area, Population, Births, and Deaths. (Table 47.)	lxxx
ITALY; Average Annual Proportion to Population of Persons married, Births, and Deaths, 1863-72, and in 1873 and 1874	xxviii
Density and Proximity of Population in 1874. (Table)	xxix
Marriage, Birth, and Death Rates compared with those of other European States. (Table 65.)	xciii
Estimated Population; Number, and Proportion to Population, of Persons married, Births, and Deaths, in each of the Years 1863-74. (Table 74.)	xcviii
LEGITIMATE BIRTHS. (See BIRTHS.)	
LIGHTNING; Sex, age, and occupation of persons killed by, in different Districts in each of the 6 Years 1869-74. (Table 15.—App.)	248-249
LOCALITY; Mortality in different localities	xvii-xxii
LOCAL DISEASES; increased Mortality from	222
LONDON; Deaths in Public Institutions in 1874	xxiv
Density of Population	xxx
Deaths in Public Institutions, 1862-74. (Table 37.)	lxx
Estimated Population, Males, Females, and Persons; Births and Deaths; Deaths in Groups of Districts; Excess of Births over Deaths; and Mortality in each Year 1862-74. (Table 38.)	lxxi
Annual Rate of Mortality in each of the Years 1840-74 in five groups of districts. (Table 39.)	lxxii
Deaths and Meteorology, 1840-74. (Table 40.)	lxxiii
Causes of Death of Males and Females at different Periods of Life in 1874	154-159
(See also TOWNS.)	
LONGEVITY. (See CENTENARIANS.)	

	PAGES
MANSLAUGHTER; Deaths of Males and Females in England at different Ages during the Year 1874	214-215
of Males and Females in each of the Eleven Divisions during the Year 1874	216
MARINE REGISTER BOOK; Number of Entries in 1873	xxvii
MARRIAGES; delay in Returns	v
in 1874	x
according to different Rites and Forms	x
First Marriages and Re-marriages	x-xi
Ages of Persons married	xi
Numbers of Bachelors, Spinsters, Widowers, and Widows married	x-xi
Mean age at Marriage	xii
Signature of Marriage Registers in Counties	xiii
Buildings registered for	xiii
Certified places of worship	xiii
List of religious denominations	xiv
registered in England in each Year, 1838-74. (Table 1.)	xxxvi
Number of Persons Living to one Person Married. (Table 2.)	xxxvii
in England in each Year, 1841-74, in Established Church and amongst Nonconformists. (Table 3.)	xxxviii
civil condition of Persons married; number of Minors married, and of Persons who signed the Register with Marks, 1841-74. (Table 4.)	xxxix
in England in each Quarter of the Years 1838-74. (Table 5.)	xl
in England in each Year 1841-74; proportion of Minors, of those who signed with Marks, of Widowers and Widows. (Table 6.)	xli
in Counties of England in 1874; proportion of those who signed with Marks, of Minors, and of Re-marriages, to Total Marriages of Men and Women. (Table 8.)	xliii
Number and Classification of Buildings registered for the solemnization of Marriages in the Divisions and Counties of England, and on the Register, on 31st December 1874. (Table 9.)	xliv
of Divorced Persons in the Years 1861-74, and in 1874 in Divisions and Districts. (Table 10.)	xlv
in the United Kingdom in 1874. (Table 45.)	lxxix
in Foreign States. (See FOREIGN STATES.)	
Registered in England in each of the Divisions, Counties, and Districts in 1874; distinguishing the form of Marriage, and whether according or <i>not</i> according to the Rites of the Established Church; and distinguishing also the seasons of Marriage, and the Marriages of Persons according to their conjugal Condition, Minority, and Signature of the Register by marks	2-25
Ages of 299,696 Persons married in 1874, distinguishing Bachelors, Spinsters, Widowers, Widows	26-28
Registered in each of the Divisions, Counties, and Districts in 1874	30-40
MARRIAGE-RATE; in England, 1866-74	x
in certain Counties	x
in Foreign States. (See also FOREIGN STATES.)	xxviii
in England in each Year 1838-74. (Table 2.)	xxxvii
in each Quarter of the Years 1838-74. (Table 5.)	xl
in Counties of England, 1863-74. (Table 7.)	xlii
in the United Kingdom in 1874. (Table 46.)	lxxix

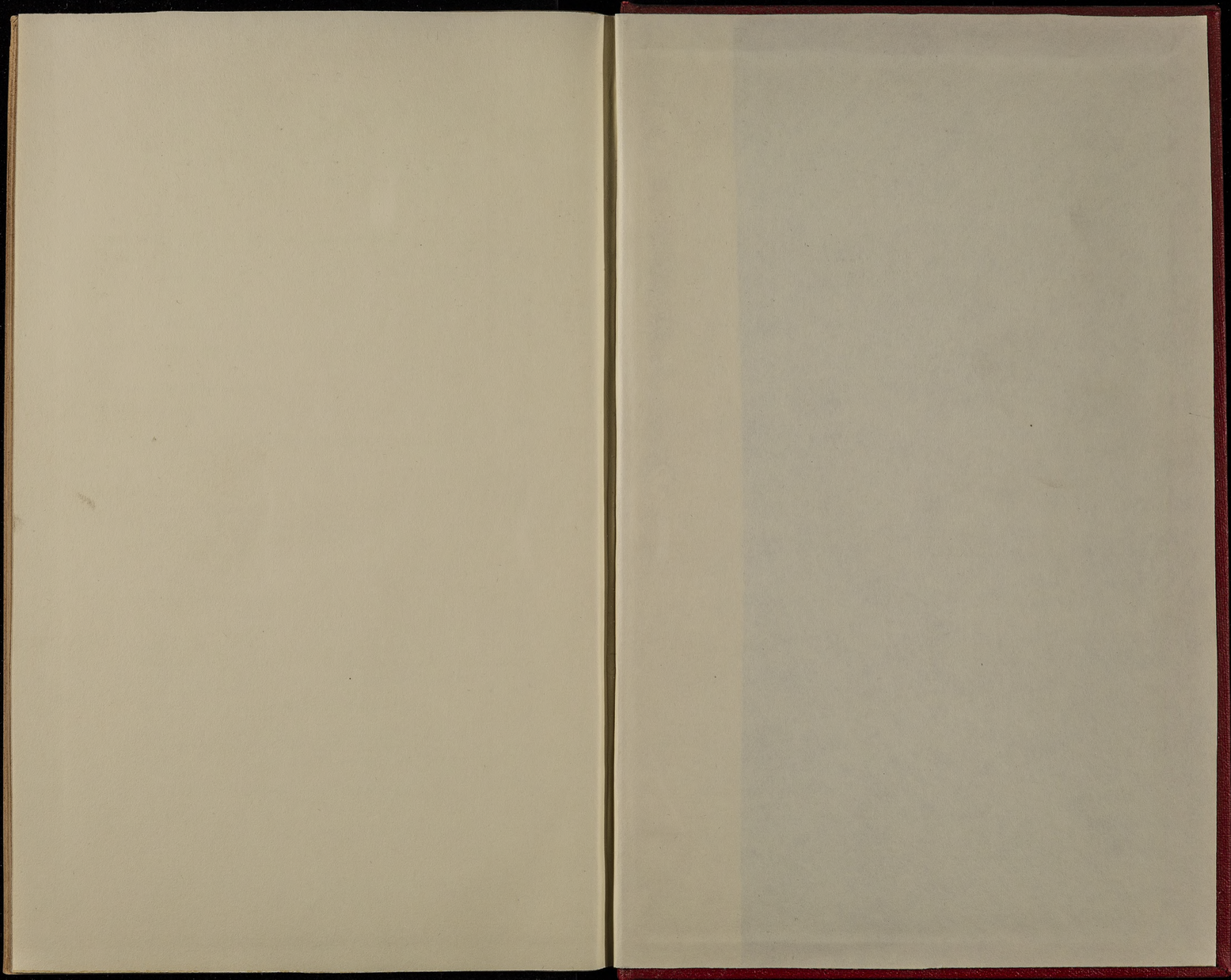
	PAGES
MEASLES, Deaths in 1874 above the average	220
Deaths and Mortality from, in Large Towns, 1870-74. (Table 19.—App.)	251
MEAT ; Average Price of, 1852 to 1874, and in each Quarter 1865-74. (Table 33.)	lxvii
(See also PRICES.)	
MERCHANT SEAMEN AT SEA ; Causes of death in 1874	xxvii-xxviii
Death-rate from drowning, 1866-74, compared with that in the Royal Navy. (Table)	xxvii
Mortality in each of the Years 1852-74. (Table 60.)	lxxxix
Rating, Age, and Causes of Death of 4,602 Merchant Seamen in 1874. (Table 61.)	lxxxix
METEOROLOGY of 1874	viii-ix
Influence of Temperature on Public Health	xvi-xvii
1874. Remarks by James Glashier, Esq., F.R.S.	xxxii-xxxiv
and Deaths in London, 1840-74. (Table 40.)	lxxiii
of different parts of the Country in the Year 1874. By James Glaisher, Esq., F.R.S. (Tables 41 and 42.)	lxxiv-lxxvii
of Greenwich, 1849-74. (Table 43.)	lxxvi-lxxvii
METRIA. (See CHILDBIRTH.)	
MINES ; Deaths from violence in. (See VIOLENT DEATHS.)	
MINORS, proportional numbers of, married	xii
(See also MARRIAGES.)	
MORTALITY. (See DEATH-RATE.)	
MURDER and INFANTICIDE ; Deaths of Males and Females in England at different Ages during the Year 1874	211-212
of Males and Females in each of the Eleven Divisions during the Year 1874	213
NAVY ; Mortality at the different Stations	xxvi
NETHERLANDS, THE ; Average Annual Proportion to Population, of Persons Married, Births, and Deaths, 1853-72, and in 1873 and 1874	xxviii
Density and Proximity of Population in 1874. (Table)	xxix
Marriage, Birth, and Death Rates compared with those of other European States. (Table 65.)	xciii
Estimated Population ; Number, and Proportion to Population, of Persons married, Births, and Deaths, 1853-74. (Table 71.)	xcvi
NOMENCLATURE of Committee of College of Physicians	254-258
PAUPERISM in 1874	ix
Number of Paupers at the end of each Year 1871-74	ix
Average number of Paupers relieved on the last day of each week 1857-74, and in each Quarter of the Years 1865-74. (Table 33.)	lxvii
PHTHISIS ; Deaths from, declining. (Table 1.—App., p. 229.)	222

	PAGES
POPULATION of England ; Remarks upon Increase of	vii-viii
estimated to the middle of 1874	viii
Effect upon of Emigration, Immigration, and un-registered Births	viii
of England estimated to the middle of each of the Years 1838-74. (Table 1.)	xxxvi
of England, Males and Females, estimated for each Year 1838-74. (Table 18.)	liii
in 1861 and 1871 in Town and Country Districts of England. (Table 31.)	lxv
estimated, in the middle of 1874, in Fifty large Town Districts. (Table 35.)	lxix
estimated, in the middle of 1874, in London and Twenty other large Towns of the United Kingdom. (Table 36.)	lxx
of London ; estimated to the middle of each Year 1862-74. (Table 38.)	lxxi
of London ; estimated Increase in each Year 1862-74. (Table 38.)	lxxi
of the Islands in the British Seas 1851, 1861, and 1871. (Table 47.)	lxxx
of United Kingdom, England and Wales, Scotland, and Ireland, Persons, Males, and Females, in middle of each Year 1801-76. (Table 62.)	xc-xci
of United Kingdom in the middle of the Census years, and logarithms of the same. (Tables 63, 64.)	xcii
in 1871 of each Division, County, District, and Sub-district	30-84
(See also ENGLAND, SCOTLAND, and IRELAND, and FOREIGN STATES.)	
POTATOES ; Average Price of, 1852 to 1874, and in each Quarter 1865-74. (Table 33.)	lxvii
PREGNANCY. (See CHILDBIRTH.)	
PRICES of Provisions in 1874	ix
of Wheat, and quantity imported, in each Year 1865-74	ix
in the Years 1852-74, and in each Quarter of the Years 1865-74. (Table 33.)	lxvii
PRIVATION ; Deaths from, in the 10 Years 1865-74, distinguishing Locality, Sex, and Age. (Table 10.—App.)	244
PROBATES and LETTERS OF ADMINISTRATION granted in the Year 1874	xxviii
PROXIMITY of Population in different European States and Cities. (Tables)	xxix-xxx
PRUSSIA ; Average Annual Proportion to Population of Persons married, Births, and Deaths, 1853-72, and in 1873 and 1874	xxviii
Density and Proximity of Population in 1874. (Table)	xxix
Marriage, Birth, and Death Rates compared with those of other European States. (Table 65.)	xciii
Estimated Population ; Number, and Proportion to Population, of Persons married, Births, and Deaths, 1853-74. (Table 70.)	xcvi
PUBLIC HEALTH. (See HEALTH.)	
PUBLIC INSTITUTIONS. (See INSTITUTIONS.)	
RAILWAYS ; Deaths from violence on. (See VIOLENT DEATHS.)	
RAINFALL in 1874	viii-ix, xxxiii-xxxiv
in 1874 in Twenty-one large Towns of the United Kingdom. (Table 36.)	lxx
RETURNS, Weekly and Quarterly	v

	PAGES
REGISTERED BUILDINGS FOR MARRIAGES on 31st December 1874. (Table 9, p. xliv.)	xiii
REGISTRATION; Progress of, 1837-74. (Table 44, p. lxxviii)	xxiv-v
RE-MARRIAGES in 1874. (<i>See also</i> MARRIAGES.)	x-xi
RHEUMATISM, most fatal at certain Ages	221
SANITATION in England; effect of	vi
SANITARY JURISDICTION in England in 1874	xv
SCARLET FEVER; Deaths in 1874 above the average	220
Mean Age at Death, and mean Rate of Mortality.	220
Deaths in the Counties of England in each of the Years 1857-74. (Table 7.—App.)	242
Deaths and Mortality from, in Large Towns, 1870-74. (Table 20.—App.)	252
SCOTLAND; Area, Estimated Population, Marriages, Births, and Deaths in 1874. (Table 45.)	lxxix
Density; and Proportion per 1000, of Marriages, Births, and Deaths to Population in 1874. (Table 46.)	xxv, lxxix
Emigration, distinguishing Destination, in 1874. (Table 49.)	lxxxii
Estimated Population of both Sexes in the middle of each of the Years 1801-76. (Table 62.)	xci
SEAMEN; Births and Deaths of British Subjects at Sea, 1856-74. (Table 59, p. lxxxvii.)	xxvii-xxviii
Death-rates by Drowning in the Mercantile Marine and in the Royal Navy compared. (Table.)	xxvii
Mortality of Merchant Seamen at Sea, 1852-74. (Table 60, p. lxxxviii.)	xxvii
Causes of Death, Rating, and Ages of Merchant Seamen in 1874. (Table 61.)	lxxxix
SEARCHES; Average Annual number of, in six Quinquennial Periods 1845-74.	xxiv
Particulars relative to Searches made in 1874	xxv
Amount received in fees for Searches in 1874	xxv
" " " " 1838-74. (Table 44.)	lxxviii
Aggregate number of Names on the Registers and number of Searches. (Table 44, p. lxxxviii.)	xxiv
Particulars as to the Index to the Names on Registers	xxiv
SEASONS; Influence of, on Mortality	xvi-xvii
SEX; Number and Proportion of Males and Females born in and out of Wedlock in Counties in 1874. (Table 15.)	1
Proportion of Male and Female Children born in the several Counties of England in each of the Years 1864-74. (Table 16.)	li
(<i>See also</i> BIRTHS and DEATHS.)	
SMALL-POX; Deaths and Mortality from, in Large Towns, 1870-74. (Table 18.—App.)	251
SPAIN; Average Annual Proportion to Population of Persons married, Births, and Deaths, 1861-70	xxviii
Density and Proximity of Population in 1870. (Table)	xxix
Marriage, Birth, and Death Rates compared with those of other European States. (Table 65.)	xciii
Estimated Population; Number, and Proportion to Population, of Persons married, Births, and Deaths in each of the Years 1861-70. (Table 73.)	xevii

	PAGES
STARVATION; Deaths from, in the Ten Years 1865-74, distinguishing Locality, Sex, and Age. (Table 10.—App.)	244
STATE MEDICINE, importance of the Study of	vi
SUB-DISTRICTS; changes in the nomenclature of, during 1874. (Table 75.)	xviii
Alphabetical Index of	263-272
SUICIDES of Males and Females in England at different Ages during the Year 1874	207-208
of Males and Females in each of the Eleven Divisions during the Year 1874	209-210
Proportion to every 1,000,000 of the Population of England, 1859-74. (Table 2.—App.)	232-234
SWEDEN; Average Annual Proportion to Population of Persons married, Births, and Deaths, 1853-72, and in 1873 and 1874	xxviii
Density and Proximity of Population in 1874. (Table)	xxix
Marriage, Birth, and Death Rates compared with those of other European States. (Table 65.)	xciii
Population; Number, and Proportion to Population, of Persons married, Births, and Deaths, 1850-74. (Table 68.)	xcv
SYPHILIS, Deaths from	221
TEMPERATURE; Mean at Greenwich in each week of 1874. (Table 34.)	lxviii
Mean in 1874 in 21 large Towns of United Kingdom. (Table 36.)	lxx
(<i>See also</i> METEOROLOGY.)	
TOWN AND COUNTRY DISTRICTS; Mortality in 1874	xvii-xxii
Area; Population 1861 and 1871; Annual Rate of Mortality per 1000 in each Quarter of the Years 1864-74. (Table 31.)	lxvi
TOWNS; Mean Temperature at Greenwich, Annual Rate of Mortality in each week of 1874, in London and 20 other large Towns of the United Kingdom. (Table 34.)	lxviii
Population, Births, Deaths; Birth and Death Rates in 1874 in Fifty large Town Districts. (Table 35.)	lxix
Population, Births, Deaths; Birth and Death Rates; Temperature and Rainfall in 1874, in London and Twenty large Towns of the United Kingdom. (Table 36.)	lxx
Mortality in large English Towns in 1874. (Tables 16-17, App.)	250
Deaths and Mortality in 17 Large Towns 1870-74, from Small-pox, Measles, Scarlet Fever, Diphtheria, Fever, and Diarrhœa. (Tables 18-23.—App.)	251-253
Index of certain Towns whose names differ from those of the District and Sub-district in which they are respectively situated	273
TYPHUS. (<i>See</i> FEVER.)	
UNITED KINGDOM; Population and Emigration in 1874	xxv
Area, Estimated Population, Marriages, Births, and Deaths, in the Year 1874. (Table 45.)	lxxix
Proportion, per 1000, of Marriages, Births, and Deaths to the Population in 1874. (Table 46.)	lxxix
Emigration in each of the Years 1815-74, distinguishing Destination. (Table 48.)	lxxxii
Emigration in the Year 1874, distinguishing the Destination, Sex, Age, Condition, Occupation, and Origin of the Emigrants. (Tables 49, 50.)	lxxxii-lxxxiii

UNITED KINGDOM— <i>continued.</i>	PAGES
Estimated Population of both Sexes, distinguishing England, Scotland, and Ireland, in the middle of each of the Years 1801-76, excluding the Islands in the British Seas, the Army, Navy, and Merchant Seamen Abroad. (Table 62.)	xc-xci
Estimated Population of both Sexes (<i>including the Islands in the British Seas, the Army, Navy, and Merchant Seamen Abroad</i>) in the middle of the Years 1801, 1811, 1821, 1831, 1841, 1851, 1861, and 1871, and the Logarithms of the same. (Tables 63, 64.)	xcii
VIOLENT DEATHS of Males and Females in England at different Ages during the Year 1874	196-201
of Males and Females in each of the Eleven Divisions during the Year 1874	202-206
in 1874	222-223
in Mines	223
Males and Females on Railways in each Year 1863-74	223
VITAL STATISTICS of European States. (Tables 65-74.)	xciii-xcviii
WEATHER. (<i>See METEOROLOGY.</i>)	
WHEAT; Average Price of, 1852 to 1874, and each quarter, 1865-1874. (Table 33.)	lxvii
WILLS; Calendars of, kept at the General Register Office, where searches may be made	xxviii
ZYMOTIC DISEASES	219-221
tendency to return in Cycles	xv
Death-rates from, in Fifty large Town Districts, 1871-4. (Table)	xviii
Death-rate from seven zymotic diseases in Fifty large Town Districts in 1874. (Table 35.)	lxix
Death-rates from, in 18 of the largest English towns in 1874. (Table 17.—App.)	250
Causes of Deaths in England	144-149
" " London	154-159
" " Divisions and Counties	160-183
Deaths from several causes in Divisions, Counties, and Districts	184-195
Deaths from, in each Year, 1847-74. (Table 1.—App.)	226-229
Deaths from, to 1,000,000 Persons living in each Year 1859-1874. (Table 2.—App.)	232
Deaths from; proportional number in 1,000,000 deaths in 1874. (Table 3.—App.)	235
Mean annual rate of mortality from, during 25 years 1850-74, and in each Quinquenniad of that period. (Table 4.—App.)	236
Death-rates from, and certain other diseases in Counties. (Table 6.—App.)	241
(See also under names of several Zymotic diseases.)	



REF