

AR/1465



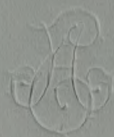
BLACKHEATH PARK
KENT

7th Aug^r 1869

Dear Mrs Roddichou

The letter in the
Spectator you attributed
to me was not mine,
nor do I know who it
is who now often writes
under signatures likely to
be mistaken for mine;
but I shall in future

BLACKHEATH PARK
KENT



date anything of the sort
I write from Blackheath
Park, to avoid such
mistakes.

I am sure all the
various movements for ~~the~~
improving the condition
of women help one another,
and all ought to go on
simultaneously if we are

to hope to see any
considerable effect produced
in our time. I am
glad to see the progress
which the college is making
— progress which I think
is in reality as great
as could possibly be
expected. Those among
us who have been
watching the signs of

progress in these things the
longest can best appreciate
and are generally best
pleased with the progress we
have been making during
the last few years. We
have all to thank you
for your very excellent
pamphlets, which have
been very useful.

Yours very sincerely

Henry Taylor

Mill's step daughter

Fawcett Library
27 Wilfred Street
London S.W.1.

9029