

4692

EAST INDIAN RAILWAY.



With the compliments  
of the Season from

the Deputy Agent.

The Deputy Chairman  
by Lancaster Gate  
London  
England



W. A. DRING,  
General Traffic Manager,  
Calcutta, 1st Dec. 1906.

Freeport Library  
27 Wilfred Street

London S.W.1.

851

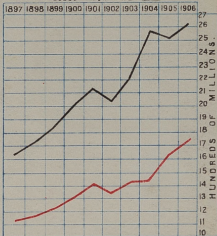
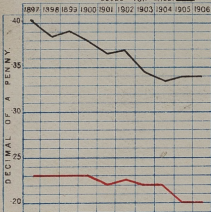
# EAST INDIAN RAILWAY.

MILES OPEN IN 1897 - 1885 MILES.

" " " " 1906 - 2283 " "

CHARGE PER PASSENGER UNIT MILE ———  
" " " " GOODS TON MILE. ———

PASSENGER UNIT MILES. ———  
GOODS TON MILES. ———



Average charge per passenger -  
One penny for each five miles.

Average charge per ton of goods and minerals - one penny for each three miles.