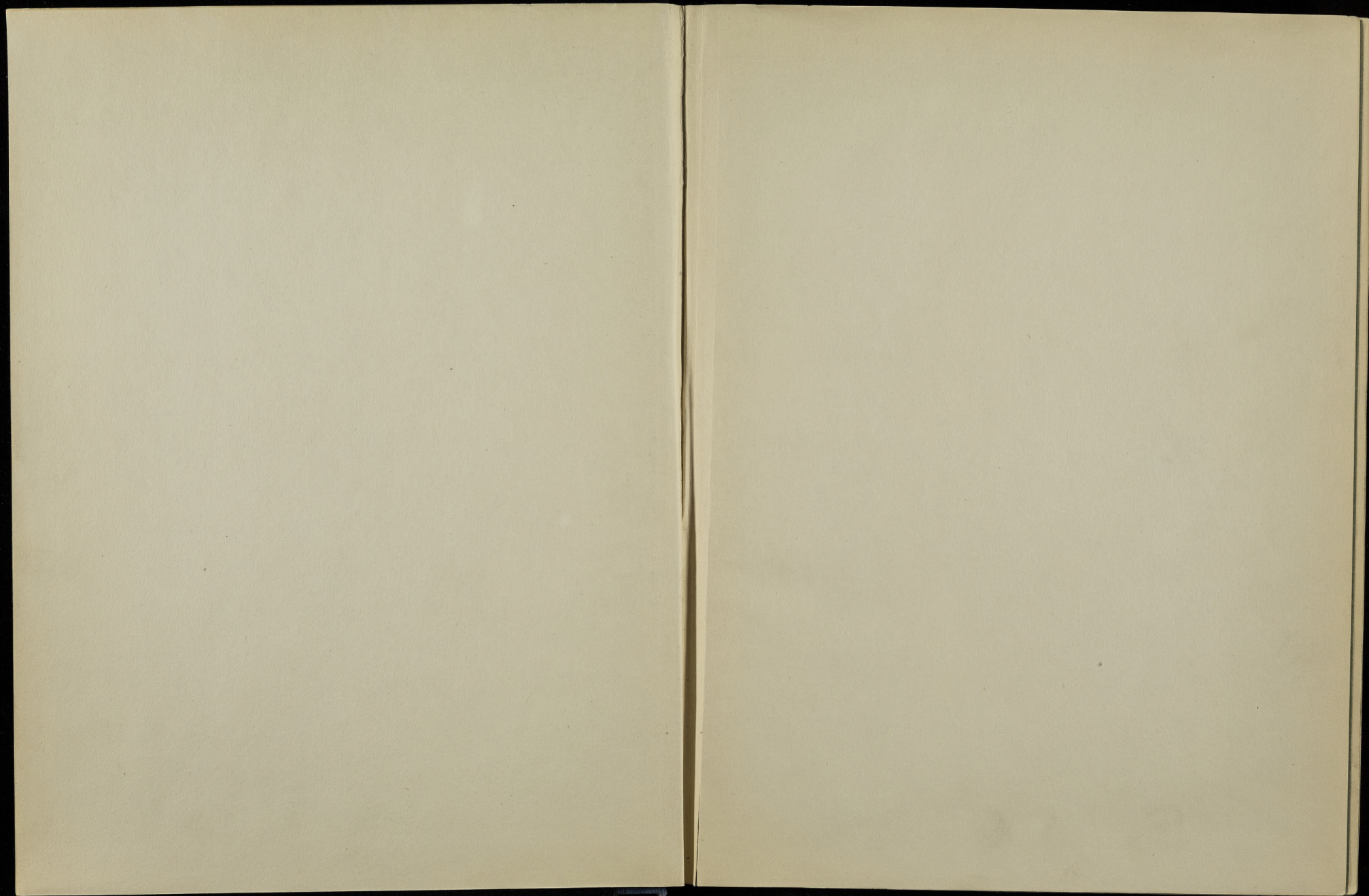


ONLY

BRITISH LIBRARY
OF POLITICAL AND
ECONOMIC SCIENCE



LONDON SCHOOL OF
ECONOMICS AND
POLITICAL SCIENCE





BOARD OF TRADE

CENSUSES OF PRODUCTION
FOR 1950, 1949 and 1948

SUMMARY TABLES - PART 1

*Presented by the Board of Trade to Parliament
in pursuance of the Statistics of Trade Act, 1947
(10 & 11 Geo. 6, Ch. 39, Sec. 7)*

LONDON: HER MAJESTY'S STATIONERY OFFICE

1953

TWO SHILLINGS NET

42
(HA 251)

STATISTICS
BACK-UP

	Wages and salaries					Net output per person employed
	Gross output	Net output	operatives	other workers	total	
	(3) £'000	(4) £'000	(9) £'000	(10) £'000	(11) £'000	
England						
Northern - 1948						
Delete	20,484	11,248	2,850	1,352	4,201	770
Substitute	23,733	12,505	3,372	1,515	4,886	856 ✓
East and West Ridings of Yorkshire - 1948						
Delete	39,054	21,200	6,586	2,394	8,980	851 ✓
Substitute	35,806	19,943	6,064	2,231	8,295	801

Board of Trade

March, 1954.

LONDON: HER MAJESTY'S STATIONERY OFFICE

Censuses of Production for 1950, 1949 and 1948

Summary Tables - Part I

Errata

	<i>Delete</i>	<i>Substitute</i>
	No.	No.
Table 1. Column (23) - All firms: Estimated employment:- Pages 22, 23.		
Newspaper and Periodical Printing and Publishing Trade - 1950	96,477	97,368 ✓
Total - Order XV - 1950	477,253	478,144 ✓
Pages 24, 25. Total - manufacturing trades - 1950	7,168,920	7,169,811 ✓
Pages 28, 29. Total - All Trades - 1950	8,533,654	8,534,545 ✓
Page 40. Table 3. Footnote (a) Manufacturing trades. Estimated number employed in all firms:-		
England - 1950	6,114,706	6,115,597 ✓
Great Britain - 1950	7,011,877	7,012,768 ✓
United Kingdom - 1950	7,168,920	7,169,811 ✓

(14550)

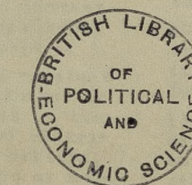
P. T. O.

BOARD OF TRADE

CENSUSES OF PRODUCTION
FOR 1950, 1949 and 1948

SUMMARY TABLES - PART 1

*Presented by the Board of Trade to Parliament
in pursuance of the Statistics of Trade Act, 1947
(10 & 11 Geo. 6, Ch. 39, Sec. 7)*



LONDON: HER MAJESTY'S STATIONERY OFFICE

1953

CENSUSES OF PRODUCTION FOR 1950, 1949 AND 1948

SUMMARY TABLES - PART I

CONTENTS

Table 1: Summary by trades 1950, 1949 and 1948, with comparable figures for 1935

Table 2: Analysis by size of establishment, 1949 and 1948

- A. Manufacturing trades
- B. Non-manufacturing trades
 - (i) Mining and quarrying (other than coal)
 - (ii) Building and contracting

Table 3: Analysis by standard region, 1949 and 1948 and by country, 1950, 1949 and 1948

- A. Manufacturing trades
- B. Non-manufacturing trades
 - (i) Mining and quarrying
 - (ii) Building and contracting
 - (iii) Gas, electricity and water
 - (iv) Other (by country only)
- C. All trades (by country only)

1. These three tables constitute the first part of the summary tables covering the censuses of production for 1950, 1949 and 1948. The second part will contain a further series of tables summarising and analysing other material collected in these censuses.

2. The following notes indicate briefly the scope of the censuses for these three years. For more detailed information about the method of taking the censuses and definitions of the terms used, etc., reference should be made to the booklet entitled 'Introductory Notes' published separately for each census.

Area covered

3. The figures included for 1950, 1949 and 1935 cover the United Kingdom; no census was taken for Northern Ireland for 1948, so that the figures for that year relate to Great Britain only. Information is given in footnotes (a) to tables 1 and 2 to assist in the comparison of the 1948 and 1949 figures. The Northern Ireland census for 1950 did not cover small firms.

Scope of the censuses

4. The census inquiries covered the field of industrial production which, for the purposes of this summary, has been divided into two broad groups: A, the manufacturing trades, covering the Standard Industrial Classification Orders III to XVI; and B, the non-manufacturing trades, covering mining and quarrying (Order II), the building and contracting trades (Order XVII), and the gas, electricity and water supply trades (Order XVIII), together with a few miscellaneous trades from other Orders. The Standard Industrial Classification minimum list heading and sub-heading numbers covered by each trade are indicated in column 1 of table 1. In a small number of cases, it will be seen that a trade includes an element of production classified to another Order; this, however, does not have any significant effect on the totals for each Order shown in table 1.

5. In the main, the census field has remained constant from year to year, but there have been minor changes in coverage, which are indicated in the footnotes to the tables. For 1950, however, the first census of distribution and other services was taken in Great Britain, and, because in some trades important retailing or merchanting activities are carried on as well as production, a high proportion of establishments in those trades came within the scope of the censuses of production and of distribution. In order to reduce the number of firms required to make returns under both censuses, the census of production for 1950 was modified in respect of these 'overlap' trades and only establishments engaged wholly on production or processing were required to complete census of production returns and then only to give the numbers of males and females employed and, in the case of larger establishments, an analysis of sales; the remainder were required to make returns for the census of distribution only. As a result, census of production figures are not available for 1950 for the following trades as a whole: toilet preparations and perfumery; constructional engineering; bread and flour confectionery; fish curing; cattle, dog and poultry foods; ice; wholesale bottling; scrap metal; and tea blending and coffee roasting. Figures are, however, included for the parts of the drugs and pharmaceutical

preparations, the tailoring, dressmaking, etc. and the milk products trades which were fully covered by the census of production. There was no census of distribution for Northern Ireland, and normal census of production arrangements applied in 1950 to larger establishments there.

6. A further significant change in 1950 was the complete exclusion from the census of production for that year of the building and contracting trades (Order XVII of the Standard Industrial Classification).

7. These changes in the scope of the census for 1950 affect the basis of comparison with earlier years and, for this reason, no 1950 figures are shown in tables 2 and 3, apart from the overall totals for 1950 which are shown with comparable figures for 1949. In table 1, for those trades and Standard Industrial Classification Orders where the 1950 coverage was incomplete comparable figures for 1949 are shown in italics.

Larger establishments and small firms

8. In table 1, the information is shown under three main heads: larger establishments (those that employed more than ten persons); small firms (those that employed ten or fewer persons); and all firms. For the majority of trades, only the larger establishments were required to complete a detailed census form; small firms were required to indicate only the number of males and females employed and the nature of the business. The figures shown under the heading 'All firms' include estimates for employment in the relatively few firms that failed to make satisfactory returns.

9. Because no census of small firms was taken in Northern Ireland for 1950 the figures relating to small firms for that year are not strictly comparable with those for 1949.

10. In tables 2 and 3 the information shown relates to the larger establishments only; the numbers of small firms and their employment by countries is given in a footnote to table 3.

11. Separate details on an establishment basis are not available for certain non-manufacturing trades, and this is the reason for the incompleteness of the size analysis in part B of table 2. The gaps may be supplemented by reference to the individual trade reports for the 1948 census of production, which contain information relating to the size of coal mines, gas undertakings, electricity generating stations and water undertakings.

Revision of earlier published figures

12. The figures shown in the tables incorporate all revisions made to date of the figures included in the individual trade reports on the censuses.

Disclosure of information

13. These tables have been prepared in accordance with the disclosure provisions of the Statistics of Trade Act, 1947, and, where it was thought that the publication of figures might lead to the disclosure of the operations of an individual firm, the figures have been combined with others of a similar nature. The effect of this procedure is noticeable in tables 2 and 3 where separate information for certain sizes of establishments or for individual regions cannot be shown.

27.1.54

42 (f-431/1948)

3.2.1954

CENSUSES OF PRODUCTION

Summary by

TABLE I

Standard Industrial Classification minimum list heading (1)	Trade and year (2)		LARGER							
			Estab-lish-ments (3)	Value of produc-tion (gross output) (4)	Cost of purchased materials and fuel used (5)	Payment for work given out (6)	Net output (7)		Number employed (c) (e) (8)	
							value (7)	per person employed (c) (d) (8)	operatives (9)	other workers (10)
	1950 } United Kingdom 1949 } 1948 } Great Britain 1935 } United Kingdom		£'000	£'000	£'000	£'000	£	No.	No.	
ORDERS III-XVI : MANUFACTURING TRADES										
Order III	Treatment of Non-Metalliferous Mining Products other than Coal									
20 and 29(3) (part)}	Brick and Fireclay (g)	1950 1,057 1949 1,039 1948 1,011 1935 1,420	65,929 61,058 55,054 27,921	24,782 22,323 18,668 7,966	17 23 24 18	41,130 38,710 36,281 19,937	534 512 504 218	69,366 68,158 64,927 85,946	7,589 7,337 6,993 5,627	
21	China and Earthenware	1950 340 1949 345 1948 333 1935 388	43,970 41,197 39,205 14,087	15,059 14,080 11,961 4,807	23 43 28 7	28,888 27,075 27,215 9,273	411 392 411 136	64,201 63,201 60,612 63,388	6,091 5,812 5,499 4,605	
23	Glass Containers	1950 65 1949 70 1948 70 1935 67	24,050 22,133 20,835 6,584	10,741 9,775 9,005 2,484	91 61 46 2	13,218 12,296 11,784 4,098	543 510 492 231	21,745 21,680 21,466 16,388	2,590 2,437 2,505 1,377	
22	Glass (other than Containers)	1950 292 1949 283 1948 272 1935 260	40,870 36,996 34,263 10,625	16,289 14,502 13,131 4,133	118 127 90 30	24,463 22,367 21,041 6,462	611 574 553 227	32,987 32,352 31,720 24,430	6,983 6,584 6,247 4,006	
24	Cement	1950 46 1949 46 1948 44 1935 56	33,069 30,275 27,628 9,135	18,383 16,792 15,520 3,693	8 - - -	14,678 13,484 12,108 5,442	1,342 1,272 1,188 572	9,057 8,852 8,521 7,640	1,879 1,748 1,670 1,868	
29(1)	Abrasives	1950 38 1949 38 1948 37 1935 30	13,186 10,666 10,259 2,572	6,367 5,270 4,787 1,154	10 12 8 -	6,809 5,383 5,464 1,418	974 820 827 453	5,101 4,852 4,825 2,393	1,891 1,714 1,779 739	
29(2) and 29(3) (part)}	Building Materials	1950 1,012 1949 1,001 1948 958 1935 801	72,388 65,513 62,455 17,939	34,551 30,229 27,185 7,803	655 558 591 157	37,182 34,726 34,679 9,979	621 589 601 265	49,976 49,502 49,030 33,008	9,757 9,226 8,552 4,608	
29(3) (part)	Roofing Felts (a)	1950 25 1949 26 1948 22 1935 25	5,161 4,553 4,377 1,302	3,400 2,906 2,512 710	- - - 1	1,762 1,647 1,864 591	972 966 1,162 369	1,399 1,314 1,258 1,196	407 386 347 406	
29(3) (part)	Manufactured Fuel	1950 22 1949 27 1948 29 1935 9	5,089 5,303 4,858 739	3,974 4,051 3,790 585	1 3 2 -	1,114 1,250 1,066 154	828 857 739 185	1,243 1,358 1,326 797	100 98 112 35	
	Total - Order III	1950 2,897 1949 2,875 1948 2,776 1935 3,056	303,712 277,695 258,934 90,904	133,546 119,927 106,560 33,335	923 828 789 215	169,244 156,938 151,504 57,353	578 547 545 222	255,075 251,269 243,685 235,186	37,287 35,342 33,704 23,271	
Order IV	Chemicals and Allied Trades									
30	Coke Ovens and By-products	1950 86 1949 88 1948 88 1935 113	81,356 79,738 75,149 16,495	65,897 64,942 61,199 12,336	16 3 4 4	15,443 14,792 13,947 4,155	832 786 758 296	15,859 16,165 15,763 12,879	2,709 2,664 2,633 1,182	
31(1)	Dyes and Dyestuffs (g)	1950 38 1949 39 1948 39 1935 35	44,999 37,039 38,028 8,110	24,683 20,652 19,939 4,147	94 292 364 -	20,221 16,095 17,725 3,963	1,072 894 1,027 485	11,788 11,636 11,102 5,477	7,073 6,373 6,159 2,697	
31(2)	Fertiliser, Disinfectant, Insecticide and Allied Trades (a) (g)	1950 180 1949 172 1948 172 1935 123	37,284 33,108 30,945 5,362	26,254 23,139 21,112 3,225	104 107 164 1	12,547 11,367 10,773 2,136	816 715 706 325	11,335 11,767 11,315 4,878	4,011 4,093 3,913 1,699	

FOR 1950, 1949, 1948 AND 1935.

trades (a)

ESTABLISHMENTS										SMALL FIRMS		ALL FIRMS (b)
Wages and salaries (c)		Stocks of finished products and work in progress		Stocks of materials and fuel		Investment				Number of firms (21)	Employment (d) (22)	Estimated employment (c) (d) (23)
operatives (11)	other workers (12)	at beginning of year (13)	change during year (14)	at beginning of year (15)	change during year (16)	in new plant and machinery (17)	in new vehicles (18)	in new buildings (f) (19)	total (20)			
£'000 (11)	£'000 (12)	£'000 (13)	£'000 (14)	£'000 (15)	£'000 (16)	£'000 (17)	£'000 (18)	£'000 (19)	£'000 (20)	No. (21)	No. (22)	No. (23)
24,160	3,796	5,397	+ 264	3,474	+ 325	198	1,281	78,464
22,748	3,538	5,657	- 133	2,992	+ 461	1,998	411	978	3,387	256	1,523	77,223
20,674	3,176	4,306	+ 1,351	2,754	+ 186	1,646	200	649	2,496	234	1,328	73,905
..
16,519	3,037	3,414	+ 412	1,768	+ 329	109	628	71,200
15,528	2,766	2,826	+ 537	1,741	+ 16	175	913	70,133
14,160	2,595	2,316	+ 451	1,609	+ 134	1,694	110	998	2,802	199	1,190	67,482
..	1,716	109	955	2,780
7,084	1,315	1,230	+ 20	2,552	+ 237
6,836	1,147	1,049	+ 179	2,417	+ 145	1,258	56	82	1,396	1	9	24,345
6,452	1,157	859	+ 221	1,937	+ 412	1,306	69	150	1,525	..	10	24,080
..
11,049	3,062	2,502	+ 515	2,804	+ 466	349	1,878	42,188
10,285	2,790	2,423	+ 71	2,631	+ 186	970	138	399	1,507	432	1,699	40,797
9,592	2,486	2,011	+ 419	2,402	+ 145	871	117	384	1,372	389	2,352	40,466
..
3,673	1,153	786	+ 73	3,909	+ 748	5	15	10,956
3,408	1,024	855	- 98	3,288	+ 586	2,003	197	854	3,054	4	6	10,609
3,040	907	893	- 49	2,580	+ 633	913	81	231	1,225	10	42	10,233
..
1,847	1,016	1,110	+ 234	1,693	+ 473	20	110	7,112
1,676	922	1,028	+ 83	1,441	+ 249	208	25	31	264	20	110	6,687
1,575	848	816	+ 212	1,396	+ 23	195	36	40	271	22	132	6,773
..
17,845	4,668	6,163	+ 836	4,783	+ 1,400	2,051	9,880	70,970
16,773	4,134	5,766	+ 207	4,454	+ 267	2,143	420	588	3,151	1,962	10,205	70,648
16,017	3,705	4,384	+ 992	3,916	+ 158	2,266	375	621	3,262	1,889	8,692	68,018
..
507	220	205	+ 26	313	+ 41	3	24	1,836
458	198	211	- 13	346	- 28	46	8	46	100	2	17	1,722
416	182	141	+ 58	292	+ 22	91	12	33	136	1	8	1,621
..
437	54	46	- 17	184	+ 38	17	84	1,429
479	48	51	+ 35	149	+ 47	42	3	43	87	19	102	1,560
457	50	26	+ 25	115	+ 32	49	-	19	68	18	97	1,550
..
83,121	18,321	20,853	+ 2,363	21,480	+ 4,057	2,753	13,909	308,500
78,191	16,566	19,865	+ 869	19,460	+ 1,908	10,361	1,367	4,019	15,747	2,870	14,575	303,499
72,382	15,106	15,752	+ 3,681	17,001	+ 1,744	9,053	999	3,083	13,135	2,763	13,851	294,128
..
5,958	1,265	1,448	- 397	3,192	+ 20	18,568
5,957	1,185	930	+ 523	2,827	+ 346	2,023	18	219	2,260	18,829
5,600	1,098	652	+ 279	2,458	+ 326	1,365	12	117	1,495	18,396
..
4,529	3,826	6,739	+ 647	3,655	+ 324	21	120	18,981
4,124	3,415	6,635	+ 213	3,862	- 207	2,235	58	609	2,902	22	144	18,160
4,166	3,200	5,516	+ 954	3,281	+ 358	1,503	57	552	2,112	19	103	17,371
..
3,717	1,955	2,136	- 290	3,923	- 212	214	1,244	16,718
3,670	1,910	1,888	+ 319	3,665	+ 233	698	97	444	1,239	224	1,230	17,198
3,374	1,676	1,524	+ 285	3,261	+ 333	549	91	149	790	165	948	16,534
..

TABLE 1 (continued)

Standard Industrial Classification minimum list heading	Trade and year		LARGER							ESTABLISHMENTS			SMALL FIRMS	ALL FIRMS (b)									
			Establishments	Value of production (gross output)	Cost of purchased materials and fuel used	Payment for work given out	Net output		Number employed (c) (e)		Wages and salaries (c)		Stocks of finished products and work in progress		Stocks of materials and fuel		Investment			Number of firms	Employment (d)	Estimated employment (c) (d)	
							value	per person employed (d)	operatives	other workers	operatives	other workers	at beginning of year	change during year	at beginning of year	change during year	in new plant and machinery	in new vehicles	in new buildings (f)				total
(1)	(2)	(3)	(4)	(5)	(6)	(7)	(8)	(9)	(10)	(11)	(12)	(13)	(14)	(15)	(16)	(17)	(18)	(19)	(20)	(21)	(22)	(23)	
MANUFACTURING TRADES (Contd.)																							
Order IV (Contd.)	Chemicals and Allied Trades (Contd.)																						
31(4) (part)	Coal Tar Products	1950	76	18,361	13,377	8	4,976	832	4,431	1,550	1,542	706	1,765	- 185	1,037	+ 72	17	89	6,072
		1949	77	18,294	13,666	19	4,609	787	4,501	1,505	1,526	650	1,543	+ 253	1,053	- 6	608	32	179	819	20	109	6,128
		1948	78	18,993	14,150	21	4,821	787	4,579	1,540	1,464	651	1,215	+ 258	992	+ 81	527	46	155	728	16	86	6,208
		1935	77	5,226	3,933	-	1,293	319	3,234	823
29(3) (part)	Chemicals (General)	1950	530	242,590	143,676	901	98,013	891	79,106	30,850	28,930	16,636	14,315	+ 919	23,359	+ 3,319	266	1,599	111,712
31(3) and 31(4) (part)		1949	523	190,244	116,534	529	73,181	712	74,830	28,072	26,312	14,743	12,892	+ 1,374	24,751	- 1,640	17,239	1,101	4,415	22,755	272	1,620	104,488
		1948	510	187,245	111,948	461	74,836	744	73,466	27,056	25,053	12,897	9,698	+ 3,498	20,866	+ 3,604	10,878	908	2,417	14,203	235	1,380	102,364
		1935	340	36,650	17,443	7	19,200	416	37,217	8,917
31(4) (part) and 32(1)	Drugs and Pharmaceutical Preparations (g) (h)	1950	45	29,481	12,992	89	16,400	1,216	8,615	4,871	2,555	2,488	3,329	+ 631	2,413	+ 824	3	24	13,511
		1949	45	22,312	10,270	91	11,951	1,000	7,624	4,321	2,212	2,093	3,425	- 73	2,528	- 124
		1948	291	82,990	42,316	484	37,744	791	33,835	13,891	8,048	6,122	9,552	+ 247	10,687	- 455	1,804	195	847	2,846	251	1,119	48,899
		1935	202	19,017	7,262	8	11,007 (i)	498	15,983	6,116	7,435	5,819	9,828	- 30	10,224	- 130	1,885	147	1,095	3,127	186	1,014	48,599
32(2)	Toilet Preparations and Perfumery (g)	1950
		1949	85	20,729	10,032	36	10,660	988	7,722	3,100	1,538	1,599	1,028	+ 216	3,481	- 14	218	53	54	325	121	532	11,365
		1948	83	17,137	8,118	11	9,009	953	6,842	2,612	1,358	1,372	1,017	+ 24	3,507	- 8	292	39	70	401	112	506	9,961
		1935	82	6,432	2,495	2	3,935	575	4,721	2,121
33	Explosives and Fireworks	1950	53	21,817	10,181	47	11,589	467	21,112	3,697	6,242	2,020	2,487	+ 147	4,050	- 15	8	43	24,855
		1949	50	18,811	8,379	9	10,423	429	20,533	3,783	5,759	2,011	2,430	+ 51	3,863	- 285	288	93	75	456	6	37	24,361
		1948	49	18,569	7,497	2	11,071	444	21,144	3,763	5,884	1,957	2,337	+ 88	3,501	+ 319	354	51	94	499	6	36	24,947
		1935	53	7,128	3,420	8	3,700	293	11,025	1,603
34	Paint and Varnish	1950	364	87,288	54,027	77	33,184	937	20,485	14,878	6,178	7,723	7,066	+ 1,869	8,503	+ 2,521	289	1,603	37,110
		1949	372	79,457	48,716	85	30,656	898	20,491	13,597	6,006	7,160	7,123	- 10	9,755	- 1,189	1,205	313	679	2,197	287	1,603	35,792
		1948	363	79,988	49,178	38	30,772	935	20,028	12,863	5,582	6,540	5,694	+ 1,396	9,617	+ 19	1,357	244	818	2,419	244	1,346	34,500
		1935	286	19,504	9,818	1	9,685	437	13,350	8,838
35(1)	Soap, Candles and Glycerine	1950	142	75,198	56,699	225	18,274	815	16,000	6,409	4,772	3,262	4,793	+ 279	6,553	+ 3,162	183	994	23,524
		1949	156	64,154	48,699	215	15,240	702	15,745	5,745	4,334	2,817	3,926	+ 940	6,285	+ 300	1,479	95	228	1,802	190	1,070	22,946
		1948	160	55,585	40,726	214	14,645	702	14,943	5,899	3,893	2,666	3,409	+ 482	6,784	- 519	883	109	179	1,170	205	1,138	22,123
		1935	160	20,539	10,963	5	9,571	413	16,287	6,875
35(2) (part) and 199(3) (part)	Polishes	1950	75	13,083	8,004	58	5,021	867	3,790	1,996	897	1,027	480	+ 14	1,714	+ 292	108	569	6,434
		1949	79	12,306	7,203	16	5,087	872	3,870	1,960	881	955	451	+ 15	1,889	- 146	101	47	50	198	128	638	6,498
		1948	79	11,977	6,815	20	5,142	881	3,979	1,851	877	871	371	+ 73	2,048	- 145	93	18	35	146	118	617	6,577
		1935	65	5,906	2,295	3	3,608	518	5,081	1,878
35(2) (part)	Ink	1950	54	8,838	4,727	-	4,110	1,053	2,542	1,358	933	840	399	+ 122	890	+ 368	32	200	4,109
		1949	54	7,160	3,643	-	3,517	977	2,368	1,229	792	740	435	- 40	1,010	- 125	129	17	32	178	29	187	3,807
		1948	54	6,766	3,358	-	3,407	944	2,399	1,207	761	680	445	+ 8	1,066	- 9	103	15	31	150	29	176	3,785
		1935	58	2,937	1,202	-	1,735	627	1,847	919
35(2) (part) and 199(3) (part)	Match (a) (g)	1950	38	11,906	1,941	-	2,284	589	3,284	586	742	274	281	+ 7	622	+ 140	113	578	4,507
		1949	39	11,226	1,826	1	2,223	563	3,384	556	723	258	276	+ 6	553	+ 71	184	13	51	248	113	529	4,532
		1948	37	8,759	1,903	-	2,008	523	3,318	518	691	246	246	+ 21	618	- 101	157	14	70	241	126	646	4,516
		1935	30	4,345	718	-	1,517 (i)	403	3,384	383
36	Mineral Oil Refining (g)	1950	15	92,847	87,340	-	5,507	577	7,114	2,428	2,857	1,098	3,773	+ 1,211	3,815	+ 1,986	1	9	9,551
		1949	16	53,628	48,094	-	5,533	638	6,579	2,094	2,618	953	3,017	+ 753	3,227	+ 586	11,109	33	1,806	12,948	2	11	8,684
		1948	16	42,496	35,319	-	7,178	923	5,890	1,883	2,165	788	1,077	+ 1,945	1,701	+ 1,528	3,478	51	852	4,380	2	9	7,782
		1935	20	7,769	4,731	-	3,038	897	2,803	584
39(1) and 39(3)	Oils and Greases	1950	174	39,723	28,287	54	11,383	1,056	6,254	4,505	2,000	2,473	2,006	+ 419	2,413	+ 1,321	256	1,450	12,262
		1949	178	36,937	26,177	26	10,733	1,001	6,127	4,577	1,833	2,385	2,337	- 323	2,978	- 432	372	214	320	906	261	1,381	12,153
		1948	171	30,952	22,389	44	8,520	900	5,306	4,146	1,526	2,098	1,805	+ 327	2,401	+ 516	242	166	154	562	257	1,389	11,026
		1935	169	11,857	7,098	9	4,750	610	4,518	3,265
39(2)	Seed Crushing and Oil Refining	1950	43	36,109	29,164	53	6,892	721	7,677	1,885	2,681	976	800	+ 620	1,774	+ 261	3	20	9,582
		1949	41	27,751	21,763	-	5,987	635	7,425	2,003	2,540	956	778	+ 92	1,154	+ 302	627	57	235	919	3	22	9,450

TABLE I (continued)

Standard Industrial Classification minimum list heading	Trade and year		LARGER							ESTABLISHMENTS			SMALL FIRMS		ALL FIRMS (b)										
			Etabl-lish-ments	Value of produc-tion (gross output)	Cost of purchased materials and fuel used	Payment for work given out	Net output		Number employed (c) (e)		Wages and salaries (c)		Stocks of finished products and work in progress		Stocks of materials and fuel		Investment				Number of firms	Employ-ment (d)	Estimated employ-ment (c) (d)		
							value	per person employed (c) (d)	operatives	other workers	operatives	other workers	operatives	other workers	at beginning of year	change during year	at beginning of year	change during year	in new plant and machinery	in new vehicles				in new build-ings (f)	total
(1)	(2)		(3)	(4)	(5)	(6)	(7)	(8)	(9)	(10)	(11)	(12)	(13)	(14)	(15)	(16)	(17)	(18)	(19)	(20)	(21)	(22)	(23)		
			No.	£'000	£'000	£'000	£'000	£	No.	No.	£'000	£'000	£'000	£'000	£'000	£'000	£'000	£'000	£'000	£'000	No.	No.	No.		
MANUFACTURING TRADES (Contd.)																									
Order V	Metal Manufacture ✓																								
40	Blast Furnaces	1950	51	111,342	90,761	113	20,468	729	24,324	3,733	9,941	1,837	2,373	+ 226	6,693	- 553	-	-	-	28,057	
		1949	50	103,788	83,916	114	19,759	707	24,216	3,727	9,545	1,717	1,307	+ 1,076	4,919	+ 1,752	3,217	29	988	4,234	-	-	-	27,943	
		1948	51	91,906	72,878	70	18,958	696	23,629	3,628	8,994	1,602	1,425	- 123	4,126	+ 799	2,725	60	589	3,374	-	-	-	27,257	
		1935	48	21,047	16,964	..	4,083	258	14,551	1,264	
41	Iron and Steel (Melting and Rolling)	1950	399	464,569	308,787	4,506	151,276	744	171,671	31,599	70,190	14,787	27,947	+ 819	38,572	+ 1,123	33	204	203,528		
		1949	401	423,820	279,794	4,030	139,996	686	173,201	30,974	67,812	13,736	24,732	+ 3,990	29,167	+ 8,595	10,890	342	2,532	13,764	32	208	204,408		
		1948	398	367,565	244,861	3,907	118,797	594	170,386	29,737	63,644	12,764	21,338	+ 3,399	24,574	+ 4,538	8,850	304	2,091	11,245	40	271	200,560		
		1935	282	87,481	57,674	772	28,035	254	103,055	11,084	
42	Iron Foundries	1950	908	134,597	59,509	1,311	73,778	600	107,257	15,546	39,352	7,369	7,905	+ 625	8,748	+ 584	161	1,054	124,185		
		1949	915	123,919	53,079	1,069	69,771	571	106,836	15,150	37,593	6,935	7,716	+ 531	8,162	+ 526	197	1,270	123,592		
		1948	870	113,366	45,468	1,048	66,850	562	104,226	14,544	34,965	6,314	6,184	+ 1,475	6,579	+ 1,475	3,075	300	1,575	4,950	195	1,269	120,611		
		1935	857	39,418	16,121	205	23,092	209	100,203	10,539	
43(1)	Steel Sheets	1950	33	65,512	50,632	158	14,722	717	18,184	2,353	7,447	1,081	3,764	+ 411	4,569	+ 19	-	-	20,538		
		1949	34	57,078	42,539	125	14,412	741	17,175	2,265	6,833	1,045	3,175	+ 598	3,448	+ 1,120	823	33	133	1,049	-	-	19,441		
		1948	35	49,371	36,724	60	12,588	630	17,836	2,129	6,660	982	2,416	+ 798	2,937	+ 560	709	18	81	808	-	-	19,966		
		1935	34	15,643	10,655	4	4,984	227	20,561	1,438	
43(2)	Tinplate	1950	42	41,757	29,924	16	11,817	705	15,416	1,351	5,830	692	2,346	+ 48	2,769	+ 102	-	-	16,767		
		1949	42	38,324	27,408	16	10,900	645	15,559	1,335	5,621	633	1,925	+ 413	2,690	+ 100	187	8	38	233	-	-	16,894		
		1948	41	33,981	23,800	26	10,155	614	15,243	1,294	5,244	574	1,640	+ 248	2,269	+ 378	126	5	28	158	-	-	16,537		
		1935	67	13,787	8,910	2	4,875	223	21,034	811	
44	Wrought Iron and Steel Tubes	1950	137	84,957	54,867	730	29,360	705	33,910	7,706	12,607	3,402	6,639	+ 884	7,009	+ 1,357	22	140	41,794		
		1949	135	71,469	45,916	612	24,941	621	32,808	7,350	11,330	3,155	5,098	+ 1,375	6,397	+ 502	1,410	100	389	1,899	26	158	40,352		
		1948	128	58,252	35,532	448	22,271	590	30,999	6,769	10,047	2,743	4,606	+ 670	5,184	+ 1,032	2,176	56	382	2,614	28	176	37,996		
		1935	91	16,318	9,467	92	6,759	244	23,949	3,696	
49	Non-Ferrous Metals (Smelting, Rolling, etc.)	1950	481	321,499	239,531	863	81,105	788	83,319	19,562	30,925	9,790	22,142	+ 9,807	20,868	+ 8,524	339	2,154	105,441		
		1949	474	240,478	172,927	897	66,654	667	81,178	18,710	28,872	9,254	24,234	- 1,524	19,772	+ 653	5,357	225	1,465	7,047	390	2,042	102,745		
		1948	475	246,821	175,973	1,003	69,844	669	86,430	17,915	29,848	8,346	22,133	+ 3,217	17,938	+ 1,756	3,995	270	1,033	5,298	387	2,299	106,932		
		1935	373	51,662	35,848	229	15,585	314	43,122	6,449	
	Total - Order V	1950	2,051	1,224,233	834,011	7,697	382,526	713	454,081	81,850	176,292	38,958	73,116	+ 12,820	89,228	+ 11,156	555	3,552	540,310		
		1949	2,051	1,058,876	705,579	6,864	346,433	653	450,973	78,511	167,605	36,515	68,187	+ 6,459	74,546	+ 13,248	24,958	1,038	7,181	33,177	645	3,678	535,375		
		1948	1,998	961,261	635,236	6,563	319,463	608	448,749	76,016	159,402	33,324	59,741	+ 9,683	63,607	+ 10,535	21,039	932	5,135	27,106	650	4,015	529,859		
		1935	1,752	245,355	155,638	1,304	88,413	244	326,475	35,281	
Order VI	Engineering, Shipbuilding and Electrical Goods ✓																								
50	Shipbuilding and Ship Repairing	1950	682	234,676	96,464	30,735	107,477	505	189,911	22,623	68,589	10,369	(j)	(j)	12,096	+ 94	365	2,144	214,983		
		1949	700	245,647	99,214	36,050	110,383	486	203,821	23,106	72,386	10,265	(j)	(j)	12,057	+ 60	1,996	105	1,135	3,236	358	2,119	229,436		
		1948	678	235,615	91,388	28,894	115,333	498	208,946	22,297	73,471	9,211	(j)	(j)	9,071	+ 1,735	1,313	130	801	2,244	370	2,178	239,806		
		1935	400	45,738	22,290	679	22,769	201	104,377	9,006	
51(2)	Marine Engineering	1950	104	66,714	34,256	1,887	30,571	503	50,963	9,798	16,901	4,327	53,727	- 755	4,415	+ 42	26	140	60,920		
		1949	102	67,046	34,862	1,612	30,573	484	53,335	9,853	16,940	4,194	51,963	+ 2,443	4,241	+ 218	1,331	29	261	1,621	20	110	63,306		
		1948	97	51,905	26,051	1,162	24,692	458	45,318	8,532	13,934	9,468	41,329	+ 3,068	3,108	+ 447	1,067	26	278	1,371	22	134	53,992		
		1935	83	12,434	6,326	566	5,542	174	27,863	3,951	
54	Machine Tools	1950	645	83,409	32,591	1,507	49,311	624	63,213	15,710	22,012	7,586	16,773	+ 883	7,580	+ 48	302	1,925	81,001		
		1949	627	74,999	29,234	1,354	44,411	572	62,436	15,127	20,528	7,079	14,971	+ 1,550	6,893	+ 581	1,845	245	530	2,620	264	1,726	79,439		
		1948	616	69,819	25,931	1,164	42,724	558	62,049	14,403	19,617	6,260	12,501	+ 1,858	6,035	+ 801	1,501	148	415	2,064	261	1,721	79,003		
		1935	195	10,303	3,376	54	6,873	263	22,052	4,116	
56	Textile Machinery and Accessories (a)	1950	456	74,131	31,069	655	42,407	580	63,451	9,628	21,031	4,583	15,693	- 2,584	9,831	- 573	240	1,367	74,580		
		1949	457	71,982	3																				

TABLE I (continued)

Standard Industrial Classification minimum list heading	Trade and year		Establishments	Value of production (gross output)	Cost of purchased materials and fuel used	Payment for work given out	Net output		Number employed (c) (e)	
	1950 } United Kingdom	1948 } Great Britain					value	per person employed (c) (d)	operatives	other workers
	1949 } United Kingdom	1935 } United Kingdom								
(1)	(2)		(3)	(4)	(5)	(6)	(7)	(8)	(9)	(10)
			No.	£'000	£'000	£'000	£'000	£	No.	No.
MANUFACTURING TRADES (Contd.)										
Order VI (Contd.)	Engineering, Shipbuilding and Electrical Goods (Contd.)									
69(7)	Mechanical Handling Equipment	1950	177	38,835	18,537	162	20,136	629	24,013	7,968
		1949	172	35,134	16,978	181	17,975	601	22,976	6,927
		1948	162	31,291	14,844	182	16,266	559	22,405	6,714
		1935	93	6,018	2,625	35	3,358	243	10,864	2,968
69(8)	Printing and Bookbinding Machinery	1950	115	17,480	5,370	964	11,146	671	13,088	3,507
		1949	109	15,141	4,448	964	9,729	604	12,779	3,314
		1948	104	12,641	3,562	477	8,602	573	11,814	3,184
		1935	77	3,502	829	19	2,654	262	8,311	1,839
52, 53, 55, 57 (part), and 69 (1-6, 9-12)	Mechanical Engineering (General)	1950	3,035	594,527	277,901	12,834	303,792	606	386,276	114,730
		1949	2,968	528,557	244,257	12,364	271,936	562	375,305	108,314
		1948	2,765	468,951	202,140	10,466	256,345	557	358,379	101,085
		1935	1,595	103,178	41,264	638	61,276	231	216,422	48,685
Part of 51 to 58 and 69	Mechanical Engineering (Repairing)	1950	835	21,627	7,097	460	14,069	471	25,155	4,525
		1949	882	22,121	7,310	395	14,416	459	26,457	4,705
		1948	826	19,962	5,634	333	13,994	466	25,404	4,410
		1935	545	4,745	1,319	39	3,387	187	15,090	3,039
29(3) (part), 70 and 79 (part)	Electrical Engineering (General)	1950	952	277,700	124,777	2,683	150,239	560	198,209	69,891
		1949	928	250,089	111,685	2,616	135,788	525	191,924	66,815
		1948	892	229,791	99,173	2,385	128,233	496	197,124	61,359
		1935	522	55,846	23,216	143	32,487	218	117,621	31,336
71	Electric Wires and Cables	1950	82	104,944	69,317	294	35,333	623	42,167	14,503
		1949	83	102,280	65,121	231	36,928	637	43,951	14,055
		1948	84	99,194	59,438	284	39,471	620	49,332	14,353
		1935	64	20,906	11,723	119	9,064	278	26,350	6,198
72, 73 and 74	Radio and Telecommunications	1950	452	184,516	75,957	1,463	107,097	497	166,165	49,226
		1949	446	163,296	63,111	784	99,402	483	157,766	48,174
		1948	421	152,652	59,202	964	92,486	460	156,527	44,507
		1935	176	39,860	16,227	30	23,603	232	83,687	18,234
75	Batteries and Accumulators	1950	49	24,587	15,181	6	9,400	603	12,173	3,403
		1949	54	23,096	13,765	2	9,329	582	12,722	3,291
		1948	59	20,972	11,982	13	8,978	564	12,843	3,081
		1935	46	6,175	2,993	1	3,181	278	9,339	2,096
79(2) (part)	Electric Lighting Accessories and Fittings	1950	158	15,896	7,354	192	8,350	508	13,339	3,085
		1949	156	14,990	6,884	134	7,972	495	12,772	3,313
		1948	152	15,206	6,935	207	8,064	488	13,564	2,952
		1935	64	2,143	1,031	11	1,101	176	5,382	886
	Total - Order VI	1950	7,765	1,742,382	796,831	53,859	891,693	563	1,252,904	329,514
		1949	7,707	1,618,955	728,790	57,161	832,405	532	1,247,088	317,496
		1948	8,105	1,706,671	771,789	66,409	868,474	535	1,293,594	330,015
		1948	7,666	1,558,376	674,518	56,331	827,527	522	1,274,974	308,323
		1935	4,519	343,241	148,546	2,761	191,934	224	713,571	143,179
Order VII	Vehicles									
80 and 83 (part)	Motor Vehicles and Cycles (Manufacturing)	1950	1,119	669,287	425,916	11,657	231,715	654	296,989	57,056
		1949	1,112	551,380	352,516	5,477	193,386	577	280,415	54,535
		1948	1,024	469,352	285,243	5,411	178,698	565	265,092	50,922
		1935	822	129,503	77,489	449	51,555	250	179,302	27,323
81(1) and 81(2) (part)	Motor Vehicles and Cycles (Repairing) (a)	1950	1,242	52,965	20,620	1,402	30,943	444	61,137	8,348
		1949	1,201	51,514	19,753	1,387	30,374	421	63,750	8,157
		1948	1,304	51,872	19,054	2,481	30,337	423	63,703	7,915
		1935	1,812	17,704	6,784	256	10,664	161	56,959	9,358
82 and 83 (part)	Aircraft Manufacture and Repair (g)	1950	195	151,055	56,344	14,842	79,999	561	98,278	44,334
		1949	184	140,440	52,236	11,002	77,482	541	100,528	42,637
		1948	195	113,826	42,462	6,331	67,709	505	93,812	40,131
		1935	57	14,328	5,391	270	8,667	241	28,953	5,937
84 and 85	Railway Locomotive Shops and Locomotive Manufacturing	1950	377	62,535	26,798	530	35,207	418	74,557	9,621
		1949	411	61,137	24,354	367	36,416	431	75,182	9,244
		1948	394	61,062	23,497	710	36,855	419	78,712	9,240
		1935	26 (1)	17,878	6,847	4	11,027	188	53,122	5,609

ESTABLISHMENTS

ESTABLISHMENTS										SMALL FIRMS		ALL FIRMS (b)
Wages and salaries (c)		Stocks of finished products and work in progress		Stocks of materials and fuel		Investment				Number of firms	Employment (d)	Estimated employment (c) (d)
operatives	other workers	at beginning of year	change during year	at beginning of year	change during year	in new plant and machinery	in new vehicles	in new buildings (f)	total			
(11)	(12)	(13)	(14)	(15)	(16)	(17)	(18)	(19)	(20)	(21)	(22)	(23)
£'000	£'000	£'000	£'000	£'000	£'000	£'000	£'000	£'000	£'000	No.	No.	No.
8,134	3,275	10,430	+ 2,053	3,959	+ 161	14	105	32,101
7,460	2,861	9,422	+ 947	3,699	+ 109	374	66	156	596	17	112	30,022
6,890	2,611	7,254	+ 1,642	3,236	+ 427	401	45	146	592	19	129	29,308
..
4,422	1,800	4,727	+ 212	1,070	+ 79	39	278	16,903
4,175	1,600	4,641	+ 188	980	+ 72	347	31	153	531	46	302	16,412
3,704	1,386	3,950	+ 622	765	+ 166	303	20	132	455	41	268	15,295
..
134,272	51,983	145,827	+ 7,089	62,304	+ 3,337	2,115	12,689	516,052
124,330	46,987	136,971	+ 9,447	60,034	+ 1,196	11,270	1,212	3,985	16,467	2,787	16,006	502,680
113,473	41,647	114,575	+19,111	50,427	+ 9,129	11,323	965	3,793	16,081	3,042	17,047	482,380
..
8,225	1,977	1,731	+ 224	1,517	+ 233	1,278	6,564	36,824
8,311	1,974	1,567	+ 226	1,562	+ 175	300	120	170	590	951	5,116	36,909
7,726	1,732	1,097	+ 322	1,101	+ 235	265	104	187	556	832	4,276	34,769
..
61,611	31,018	60,015	+ 1,721	31,147	+ 1,367	892	5,226	273,944
57,160	27,306	60,151	+ 2,483	33,372	- 2,655	4,969	437	1,868	7,274	978	5,048	264,722
55,344	24,150	51,196	+ 8,897	28,830	+ 4,286	5,167	333	2,088	7,588	972	5,599	265,385
..
12,613	6,413	15,730	+ 1,175	12,674	+ 2,196	4	19	56,689
12,761	5,977	15,492	+ 428	12,343	+ 208	1,997	130	570	2,697	3	20	58,026
13,885	5,493	13,102	+ 3,657	11,278	+ 1,250	1,653	120	648	2,421	3	20	63,705
..
50,307	21,277	30,483	+ 1,670	14,948	+ 1,767	137	814	216,408
47,045	20,107	32,810	- 581	16,586	- 1,311	1,962	184	416	2,563	202	943	207,090
44,436	18,576	28,138	+ 5,517	15,134	+ 786	2,453	149	435	3,037	139	818	202,271
..
3,607	1,584	2,786	+ 214	2,345	+ 484	124	572	16,203
3,528	1,397	2,489	+ 302	2,483	- 164	368	28	53	449	152	658	16,700
3,355	1,297	1,904	+ 540	2,227	+ 320	361	31	58	470	138	602	16,568
..
3,351	1,491	1,782	+ 24	2,034	+ 72							

TABLE 1 (continued)

Standard Industrial Classification minimum list heading	Trade and year		LARGER							ESTABLISHMENTS			SMALL FIRMS		ALL FIRMS (b)								
			Estab-lish-ments	Value of produc-tion (gross output)	Cost of purchased materials and fuel used	Payment for work given out	Net output		Number employed (c) (e)		Wages and salaries (c)	Stocks of finished products and work in progress		Stocks of materials and fuel		Investment			Number of firms	Employ-ment (d)	Estimated employ-ment (c) (d)		
							value	per person employed (c) (d)	operatives	other workers		at beginning of year	change during year	at beginning of year	change during year	in new plant and machinery	in new vehicles	in new build-ings (f)				total	
																							1950 } United Kingdom
(1)	(2)	(3)	(4)	(5)	(6)	(7)	(8)	(9)	(10)	(11)	(12)	(13)	(14)	(15)	(16)	(17)	(18)	(19)	(20)	(21)	(22)	(23)	
MANUFACTURING TRADES (Contd.)																							
Order VII (Contd.)																							
Vehicles (Contd.)																							
86	Railway Carriages and Wagons and Trams	1950	762	92,418	49,682	504	42,232	476	79,770	8,942	28,842	3,621	11,389	+ 201	20,183	- 1,484	37	191	88,931
		1949	745	87,114	45,608	168	41,339	461	80,772	8,975	28,065	3,577	11,762	- 441	19,649	- 215	715	46	218	979	36	196	89,954
		1948	754	83,268	42,990	230	40,047	446	80,956	8,843	27,228	3,586	9,378	+ 2,402	15,888	+ 3,694	681	46	248	976	25	136	90,123
		1935	145(1)	24,360	10,186	47	14,127	187	68,741	6,835
89	Carts, Perambulators, etc.	1950	104	6,873	3,837	68	2,967	446	5,643	978	1,516	468	352	- 6	868	- 17	898	2,938	10,015
		1949	107	7,172	3,865	94	3,213	438	6,285	1,002	1,591	453	345	- 4	979	- 109	107	26	29	162	1,104	3,444	11,240
		1948	100	7,215	3,851	106	3,258	447	6,289	965	1,521	385	312	+ 53	847	+ 102	108	21	18	147	1,039	3,162	11,025
		1935	121	2,261	1,163	8	1,090	177	5,444	709
Total - Order VII		1950	3,799	1,035,133	583,197	29,003	423,063	558	616,374	129,279	232,408	57,464	151,548	+ 14,540	100,369	+ 491	3,127	15,138	763,737
		1949	3,760	898,756	498,332	18,495	382,210	522	606,942	124,550	219,657	53,537	149,888(j)	+ 958(j)	102,857	- 4,088	15,010	1,421	4,677	21,108	3,528	16,041	750,144
		1948	3,771	786,595	417,097	15,269	356,905	505	588,664	118,016	201,467	49,281	128,905(j)	+ 16,032(j)	89,938	+ 15,395	16,137	931	3,762	20,830	3,631	17,245	727,672
		1935	2,983(1)	206,034	107,870	1,034	97,130	216	393,521	55,771
Order VIII																							
Metal Goods not elsewhere specified																							
90(1)	Tool and Implement	1950	342	27,768	11,735	229	15,805	533	25,028	4,602	7,428	2,210	2,495	+ 223	2,530	+ 127	449	2,365	32,346
		1949	355	25,719	10,654	299	14,766	501	25,009	4,407	7,068	1,990	2,386	+ 165	2,460	+ 20	418	66	128	612	545	2,963	32,712
		1948	333	23,934	9,274	289	14,372	499	24,439	4,293	6,594	1,883	2,256	+ 220	1,926	+ 387	465	49	107	621	536	2,775	32,130
		1935	260	6,472	2,396	65	4,011	190	18,747	2,400
90(2)	Cutlery	1950	170	15,547	4,921	186	10,440	756	11,835	1,885	3,193	988	1,015	- 19	1,127	+ 54	243	1,140	15,111
		1949	172	13,764	4,297	166	9,302	719	11,073	1,808	2,939	928	1,122	- 78	1,126	- 12	272	30	127	429	275	1,286	14,386
		1948	174	12,519	3,748	173	8,597	659	11,299	1,687	2,941	859	956	+ 83	929	+ 124	402	30	47	479	288	1,298	14,710
		1935	156	3,850	1,265	69	2,516	221	10,226	1,149
91, 92 and 99(4)	Chain, Nail, Screw and Miscellaneous Forgings	1950	682	95,456	49,583	1,017	44,856	553	69,251	11,705	21,081	5,403	6,994	+ 295	9,386	- 291	2,669	7,260	89,250
		1949	672	85,817	43,491	823	41,503	525	67,897	11,100	19,860	4,962	6,036	+ 988	8,090	+ 880	2,405	182	710	3,297	3,136	8,239	87,988
		1948	640	81,282	37,727	719	42,836	547	67,317	10,786	18,779	4,762	5,082	+ 834	6,587	+ 1,484	2,696	202	577	3,475	3,197	8,664	87,721
		1935	569	21,321	10,561	235	10,525	188	50,195	5,646
93	Wire and Wire Manufactures	1950	286	80,343	56,256	408	23,680	667	29,446	6,032	9,842	2,874	4,353	+ 908	4,912	+ 577	166	948	36,538
		1949	291	68,375	46,711	360	21,304	605	28,400	5,790	9,356	2,648	3,749	+ 568	4,765	+ 245	1,688	233	419	2,340	175	971	36,228
		1948	277	63,832	41,786	453	21,593	617	29,514	5,432	8,832	2,427	3,115	+ 497	3,898	+ 966	1,309	144	495	1,948	178	1,015	36,199
		1935	225	16,140	10,206	58	5,876	245	21,555	2,390
94 and 99(1,2,3 and 7)	Hardware, Hollow-ware, Metal Furniture and Sheet Metal (g)	1950	2,064	210,474	112,577	2,609	94,897	526	151,322	28,804	44,139	13,745	12,776	+ 1,021	21,732	- 267	2,366	12,924	194,763
		1949	2,028	190,178	99,398	2,489	87,956	506	146,229	27,226	40,979	12,426	11,766	+ 1,146	21,146	+ 386	3,567	604	1,117	5,288	2,413	12,995	188,662
		1948	1,951	179,832	89,295	2,560	87,770	501	148,380	26,508	39,943	11,448	9,964	+ 1,709	19,387	+ 1,479	3,357	492	1,188	5,037	2,509	13,800	192,381
		1935	1,196	39,914	19,432	222	20,256	188	95,744	11,848
95	Brass Manufactures (g)	1950	625	57,518	28,261	586	28,671	573	42,448	7,490	12,720	3,828	4,993	+ 791	3,775	+ 1,470	281	1,662	51,814
		1949	630	50,444	23,481	606	26,357	525	42,560	7,527	12,412	3,573	5,150	- 62	4,285	- 491	965	145	400	1,510	264	1,516	51,783
		1948	616	54,966	25,597	681	28,678	555	44,427	7,101	12,352	3,333	4,381	+ 587	4,077	+ 3	1,003	105	368	1,475	240	1,444	53,240
		1935	497	13,665	5,867	208	7,590	193	34,748	4,534
99(5 and 6)	Needles, Pins, Fish Hooks and Metal Smallwares	1950	191	18,567	7,171	270	11,126	487	20,011	2,825	4,828	1,345	1,698	+ 296	1,590	+ 345	48	304	23,194
		1949	194	15,692	5,770	175	9,745	450	18,834	2,814	4,386	1,302	1,573	+ 127	1,625	- 61	539	40	183	762	59	377	22,083
		1948	181	14,987	5,209	207	9,571	451	18,418	2,766	4,076	1,273	1,390	+ 156	1,460	+ 147	494	28	65	587	62	380	21,736
		1935	113	3,581	1,209	24	2,348	164	13,081	1,264
Total - Order VIII		1950	4,360	505,673	270,503	5,305	229,475	555	349,341	63,343	103,231	30,393	34,324	+ 3,515	45,052	+ 2,015	6,222	26,603	443,016
		1949	4,342	449,989	233,802	4,918	210,933	524	341,002	60,672	97,000	27,829	31,783	+ 2,853	43,497	+ 967	9,854	1,302	3,084	14,240	6,867	28,347	433,842
		1948	4,172	451,354	212,637	5,082	213,418	529	343,794	58,573	93,517	25,984	27,145	+ 4,085	38,264	+ 4,590	9,727	1,050	2,847	13,624	7,010	29,376	438,117
		1935	3,016	104,939	50,936	881	53,122	194	244,296	29,229
Order IX																							
Precision Instruments, Jewellery, etc.																							
100 and 199(2)	Scientific, Surgical and Photographic Instruments, etc.	1950	747	72,124	28,881	946	42,296	565	58,783	16,005	17,834	7,411	9,237	+ 778	8,562	+ 909	660	3,724	79,157
		1949	723	63,969	24,360	820	38,789	533	57,152	15,511	16,701	6,734	9,323	+ 107	9,002	- 422	1,592	146	603	2,341	692	3,768	76,892
		1948	662	53,251	19,608	603	33,041	495	52,312	14,334	14,401	5,817	8,050	+ 1,167	7,265	+ 1,331	1,088	104	335	1,528	786	3,980	71,336
		1935	357	10,835	4																		

TABLE 1 (continued)

Standard Industrial Classification minimum list heading (1)	Trade and year 1950) United Kingdom 1949) Great Britain 1948 United Kingdom 1935		LARGER							ESTABLISHMENTS				SMALL FIRMS	ALL FIRMS (b)									
			Estab-lish-ments (3)	Value of produc-tion (gross output) (4)	Cost of purchased materials and fuel used (5)	Payment for work given out (6)	Net output		Number employed (c) (e)		Investment				Number of firms (21)	Employ-ment (d) (22)	Estimated employ-ment (c) (d) (23)							
							value (7)	per person employed (c) (d) (8)	operatives (9)	other workers (10)	Stocks of finished products and work in progress		Stocks of materials and fuel					Investment						
											at beginning of year (13)	change during year (14)	at beginning of year (15)	change during year (16)				in new plant and machinery (17)	in new vehicles (18)	in new buildings (f) (19)	total (20)			
£'000	£'000	£'000	£'000	£'000	£	No.	No.	£'000	£'000	£'000	£'000	£'000	£'000	£'000	£'000	No.	No.	No.						
MANUFACTURING TRADES (Contd.)																								
Order IX (Contd.)	Precision Instruments, Jewellery, etc. (Contd.)																							
	102	Jewellery and Plate (g)		1950	366	19,566	9,263	414	9,885	490	17,278	2,802	4,709	1,389	2,832	+ 148	2,096	+ 449	664	3,142	23,611
		1949	358	18,589	8,326	415	9,844	489	17,214	2,801	4,634	1,293	2,709	+ 138	2,175	- 103	221	38	80	339	754	3,424	23,855	
		1948	350	19,601	9,019	425	10,156	501	17,481	2,695	4,802	1,278	2,268	+ 464	2,098	+ 69	174	35	72	281	692	3,413	24,279	
		1935	458	9,194	4,396	181	4,617	180	21,320	4,267	
	103	Precious Metals Refining		1950	27	74,293	69,815	51	4,427	830	4,063	1,268	1,337	741	7,014	- 715	2,397	+ 342	16	103	5,434
		1949	27	52,969	48,409	48	4,513	928	3,624	1,235	1,159	724	5,315	+ 1,700	2,183	+ 214	475	18	316	809	17	105	4,966	
		1948	31	33,062	29,442	8	3,612	780	3,465	1,164	1,059	699	4,451	+ 648	2,409	- 259	192	9	130	330	18	107	4,738	
		1935	23	31,182	30,129	26	1,027	434	1,893	474	
	Total - Order IX	1950	1,332	183,923	115,767	1,500	66,651	567	94,347	23,015	28,239	10,947	20,986	+ 522	15,043	+ 1,717	1,773	8,977	127,675	
1949		1,299	150,967	87,870	1,421	61,672	543	90,995	22,374	28,348	10,043	19,319	+ 2,007	15,844	- 790	2,766	230	1,077	4,073	2,179	10,158	124,640		
1948		1,226	120,770	63,982	1,184	55,603	520	85,883	20,851	23,796	9,080	16,354	+ 2,670	13,892	+ 1,472	1,775	179	649	2,603	2,378	10,886	119,371		
1935		1,054	56,462	41,134	258	15,070	215	58,369	11,732		
Order X	Textiles																							
	110	Cotton Spinning and Doubling		1950	730	331,060	239,501	3,747	87,812	540	153,484	9,112	38,116	5,369	22,211	+ 6,298	20,872	+ 6,297	37	261	162,919
		1949	735	259,850	184,981	3,838	71,031	445	150,814	8,647	35,626	4,825	19,826	+ 2,112	21,187	+ 46	4,181	92	870	5,143	45	298	159,827	
		1948	730	242,730	173,169	3,145	66,416	430	145,583	8,692	32,993	4,363	12,963	+ 6,387	20,848	+ 1,290	3,872	92	647	4,410	34	234	154,773	
		1935	820	74,475	53,918	343	20,214	111	176,773	5,794	
	111	Cotton Weaving		1950	825	243,235	172,972	2,790	67,474	573	111,592	6,215	27,584	3,926	15,663	+ 4,082	15,481	+ 5,235	49	301	118,162
		1949	803	193,129	136,157	2,737	54,235	485	105,951	5,819	24,893	3,520	13,928	+ 1,197	14,927	+ 744	3,158	177	676	4,011	45	287	112,132	
		1948	778	173,427	122,576	2,534	48,316	463	98,909	5,435	22,159	2,999	9,378	+ 3,023	13,748	+ 2,202	2,206	118	424	2,747	38	241	104,772	
		1935	894	60,301	42,396	427	17,478	122	137,826	5,065	
	112	Woollen and Worsted (g)		1950	1,553	549,576	387,105	20,188	142,282	707	184,526	16,486	47,830	11,523	45,241	+19,588	71,450	+40,660	585	3,345	204,809
1949		1,526	412,964	276,467	18,249	118,350	607	178,964	15,679	43,374	10,254	36,799	+ 4,641	60,452	+13,677	5,972	614	2,873	9,459	598	3,427	198,681		
1948		1,457	349,681	219,247	16,718	115,074	626	168,415	14,971	38,935	9,050	27,255	+ 7,652	53,705	+ 6,499	4,466	460	968	5,893	529	2,866	187,128		
1935		1,423	118,373	74,016	6,374	37,983	178	200,975	11,975		
113 and 114	Rayon, Nylon, etc. and Silk		1950	376	151,131	78,775	3,023	69,334	777	77,720	11,541	22,729	6,023	9,550	+ 1,865	13,744	+ 2,748	23	152	89,454	
	1949	365	120,584	65,892	2,812	51,880	625	72,296	10,653	20,149	5,345	8,765	+ 942	13,775	- 15	9,836	138	2,609	12,583	21	138	83,123		
	1948	357	101,586	53,851	2,813	44,933	572	68,579	9,974	17,245	4,795	6,867	+ 1,135	11,666	+ 2,891	8,693	136	1,911	10,739	19	135	78,805		
	1935	325	41,467	22,056	923	16,397 (i)	186	81,750	6,260		
115	Flax Processing (a)		1950	26	1,050	627	2	422	260	1,425	183	380	79	158	- 13	113	- 11	(a)	(a)	1,625	
	1949	37	1,178	678	3	496	245	1,793	201	424	76	125	+ 36	141	- 22	33	1	9	43	199	1,261	3,284		
	1948	11	843	497	-	346	224	1,336	205	334	70	110	- 4	90	- 14	22	24	33	79	-	-	1,541		
	1935		
116	Linen and Soft Hemp (a)		1950	289	91,468	60,735	4,287	26,446	419	58,140	4,596	10,693	1,858	11,523	+ 1,371	8,627	+ 2,909	5	32	63,201	
	1949	298	79,402	53,042	3,652	22,708	379	54,372	4,531	9,448	1,662	12,558	- 90	7,337	+ 281	1,528	41	382	1,951	86	426	60,332		
	1948	75	13,145	8,623	242	4,280	383	10,335	828	1,846	378	1,537	+ 105	2,192	- 141	142	2	37	182	1	3	11,197		
	1935	310	24,026	16,303	660	7,063	102	65,652	3,500		
117	Rope, Twine and Net (a)		1950	146	25,505	17,868	53	7,584	523	12,887	1,593	2,702	791	2,090	+ 534	2,035	+ 1,018	143	728	15,257	
	1949	151	20,682	13,980	65	6,638	468	12,558	1,587	2,556	712	2,135	- 102	2,070	+ 3	272	14	107	393	140	805	15,017		
	1948	163	18,805	12,582	57	6,166	458	11,986	1,429	2,367	602	1,378	+ 405	1,691	+ 1	225	23	89	338	115	591	14,122		
	1935	158	5,680	3,450	1	2,229	144	14,177	1,323		
118	Hosiery and Other Knitted Goods		1950	1,066	164,626	95,212	5,451	63,963	561	101,537	12,171	23,673	6,273	15,018	+ 4,193	11,514	+ 5,082	241	1,418	115,440	
	1949	1,016	130,606	75,075	4,515	51,016	485	94,082	10,938	20,614	5,552	12,672	+ 2,025	10,011	+ 1,635	5,582	197	678	6,457	243	1,576	106,942		
	1948	952	109,197	59,198	5,093	44,906	473	84,701	10,055	16,986	4,871	9,734	+ 2,409	8,555	+ 1,417	3,707	138	491	4,335	246	1,522	96,824		
	1935	939	39,486	21,054	1,170	17,262	150	105,622	9,651		
119 and 123(4)	Lace		1950	286	21,795	10,800	1,152	9,843	671	12,724	1,869	2,924	1,043	1,797	+ 214	1,829	+ 335	133	837	15,556	
	1949	279	18,436	8,868	943	8,625	645	11,540	1,746	2,504	921	1,703	+ 109	1,972	- 169	185	28	77	290	137	856	14,290		
	1948	264	16,258	7,543	1,080	7,635	620	10,712	1,554	2,205	766	1,403	+ 284	1,397	+ 480	163	29	62	254	150	944	13,308		
	1935	277	7,155	4,084	236	2,835	173	14,469	1,873		

ESTABLISHMENTS

Wages and salaries (c)		Stocks of finished products and work in progress		Stocks of materials and fuel		Investment				SMALL FIRMS	ALL FIRMS (b)
operatives	other workers	at beginning of year	change during year	at beginning of year	change during year	in new plant and machinery	in new vehicles	in new buildings (f			

TABLE I (continued)

Standard Industrial Classification minimum list heading	Trade and year		LARGER							ESTABLISHMENTS				SMALL FIRMS	ALL FIRMS (b)								
			Estab-lish-ments	Value of produc-tion (gross output)	Cost of purchased materials and fuel used	Payment for work given out	Net output		Number employed (c) (e)		Investment				Number of firms	Employ-ment (d)	Estimated employ-ment (c) (d)						
							value	per person employed (c) (d)	operatives	other workers	at beginning of year	change during year	at beginning of year	change during year				in new plant and machinery	in new vehicles	in new build-ings (f)	total		
																						1950	1949
(1)	(2)		(3)	(4)	(5)	(6)	(7)	(8)	(9)	(10)	(11)	(12)	(13)	(14)	(15)	(16)	(17)	(18)	(19)	(20)	(21)	(22)	(23)
			No.	£'000	£'000	£'000	£'000	£	No.	No.	£'000	£'000	£'000	£'000	£'000	£'000	£'000	£'000	£'000	£'000	No.	No.	No.
MANUFACTURING TRADES (Contd.)																							
Order X (Contd.)																							
120 Textiles (Contd.)																							
121 Carpets																							
1950	132	51,734	33,628	425	17,681	622	25,200	3,175	6,399	1,690	3,733	+ 1,728	4,833	+ 3,586	33	194	28,609
1949	132	37,847	23,847	399	13,600	521	23,163	2,903	5,564	1,457	3,067	+ 666	4,875	- 28	1,279	48	367	1,694	34	205	26,314	26,314	
1948	124	31,180	18,012	371	12,797	560	20,340	2,469	4,532	1,244	2,172	+ 753	3,680	+ 1,125	793	45	229	1,067	38	191	23,046	23,046	
1935	98	11,319	5,634	80	5,605	190	26,970	2,578
122(1) Narrow Fabrics																							
1950	207	21,861	12,122	680	9,059	479	16,629	2,269	3,474	1,181	1,791	+ 217	2,448	+ 597	52	337	19,284
1949	208	18,443	9,811	582	8,050	440	16,118	2,153	3,173	1,068	1,667	+ 49	2,246	+ 163	462	59	119	640	50	336	18,702	18,702	
1948	209	18,042	9,108	581	8,354	460	15,971	2,145	3,031	1,036	1,058	+ 472	1,810	+ 425	441	34	212	687	49	325	18,478	18,478	
1935	184	5,363	2,596	74	2,693	152	16,185	1,495
122(2) Canvas Goods and Sacks (n)																							
1950	255	30,307	23,592	423	6,292	503	10,769	1,700	2,280	922	1,145	+ 131	2,437	- 81	325	1,751	14,408
1949	251	28,442	22,353	462	5,627	468	10,390	1,598	2,116	800	1,162	- 53	2,383	+ 78	77	51	87	215	330	1,779	14,078	14,078	
1948	241	26,485	20,586	464	5,435	461	10,171	1,583	1,981	713	868	+ 239	2,404	+ 35	89	43	102	234	270	1,403	13,593	13,593	
1935	188	5,428	3,977	9	1,440	164	7,629	1,133
122(3) Made-up Household Textiles (a) (g)																							
1950	169	16,031	11,943	269	3,818	415	8,269	816	1,458	332	905	+ 260	596	+ 96	43	313	9,521
1949	148	13,241	9,387	557	3,297	412	7,118	776	1,129	299	1,001	+ 98	395	+ 81	36	10	10	56	36	253	8,289	8,289	
1948	102	10,536	7,955	419	2,199	535	3,558	530	616	180	825	+ 140	328	+ 58	23	12	5	41	25	109	4,270	4,270	
1935
123(1) and (2) and (5) Textile Finishing (a)																							
1950	697	82,691	29,855	3,219	49,617	569	75,128	11,990	22,352	6,078	2,858	+ 240	5,907	+ 734	97	609	87,947
1949	672	71,559	26,213	2,785	42,561	508	72,432	11,236	20,070	5,446	2,580	+ 266	6,163	- 243	2,521	197	754	3,472	123	771	84,657	84,657	
1948	596	57,691	20,167	2,265	35,259	478	63,601	10,032	16,795	4,610	1,686	+ 354	4,812	+ 993	1,895	152	383	2,430	104	619	74,592	74,592	
1935	857	30,462	11,624	487	18,351	183	89,620	10,464
123(3) Textile Packing																							
1950	65	2,318	945	18	1,355	509	2,277	378	655	159	101	+ 4	46	250	2,918
1949	64	2,368	959	45	1,364	498	2,355	375	649	157	94	+ 8	19	1	19	39	53	323	3,075	3,075	
1948	62	1,939	753	7	1,179	470	2,155	345	554	132	87	+ 4	8	1	..	9	73	400	2,908	2,908	
1935	123	1,175	426	6	743	149	4,183	807
129(1) and 199(3) (part) Asbestos																							
1950	66	20,444	9,614	20	10,810	717	11,337	3,736	3,637	1,644	2,145	+ 324	2,599	+ 506	51	305	15,400
1949	69	18,713	8,821	78	9,814	669	11,205	3,466	3,443	1,413	1,996	+ 177	2,507	+ 115	438	61	266	765	55	323	15,036	15,036	
1948	60	18,616	7,466	70	11,080	766	11,162	3,297	3,203	1,302	1,634	+ 339	1,762	+ 706	340	76	214	630	58	357	14,846	14,846	
1935	59	3,313	1,333	2	1,978	308	4,924	1,501
129(2) Flock and Rag																							
1950	194	29,571	22,803	194	6,474	807	6,840	1,130	1,791	701	1,030	+ 683	1,102	+ 583	334	1,901	10,015
1949	191	19,118	14,375	146	4,597	634	6,119	1,074	1,507	578	815	+ 42	1,095	+ 160	146	85	105	336	348	1,926	9,293	9,293	
1948	176	16,541	12,445	138	3,957	597	5,620	959	1,293	463	673	- 21	1,177	- 36	140	72	61	273	376	2,083	8,799	8,799	
1935	170	5,089	3,883	19	1,187	207	5,112	630
129(3) and 199(3) (part) Hair, Fibre and Kindred Trades																							
1950	95	9,204	5,646	98	3,460	680	4,420	682	1,068	384	520	+ 96	1,116	+ 231	41	202	5,308
1949	89	8,328	4,998	74	3,256	658	4,339	598	+ 66	1,086	- 12	89	34	98	221	44	232	5,206	5,206	
1948	87	8,068	4,451	66	3,552	714	4,390	575	944	329	443	+ 24	1,076	+ 11	103	14	48	164	37	172	5,185	5,185	
1935	59	1,817	1,137	7	673	184	3,214	451
Total - Order X (m)																							
1950	7,260	1,871,774	1,234,572	46,164	591,039	601	890,521	90,747	223,023	50,524	138,881	+ 42,132	168,694	+ 70,958	2,246	12,985	996,642
1949	7,108	1,477,561	952,072	42,011	483,579	516	850,968	85,125	201,270	44,944	122,553	+ 12,425	154,504	+ 16,585	36,688	1,861	10,238	48,787	2,595	15,265	954,234	954,234	
1948	6,516	1,236,576	773,591	36,129	428,250	515	753,651	76,161	170,504	38,342	81,049	+ 23,856	132,840	+ 17,876	27,634	1,480	6,090	35,205	2,168	12,221	845,454	845,454	
1935	6,955	442,903	272,975	10,838	156,998	150	978,064	65,405
Order XI																							
130(1) Leather, Leather Goods and Fur																							
130(1) Leather (Tanning and Dressing)																							
1950	455	109,481	76,610	881	31,990	939	29,458	4,522	9,473	3,181	13,339	+ 2,820	9,816	+ 3,266	212	1,214	35,328
1949	455	92,508	64,875	844	26,789	793	29,424	4,272	9,032	2,963	12,221	+ 670	8,989	+ 1,082	937	147	331	1,415	224	1,245	35,076	35,076	
1948	459	89,215	56,594	694	31,927	943	29,610	4,170	8,697	2,808	8,569	+ 3,222	9,098	+ 296	904	136	283	1,322	203	1,105	35,218	35,218	
1935	458	25,835	18,052	320	7,463	248	27,071	3,030
130(2) Fellmongery																							
1950	43	4,859	3,497	32	1,330	779	1,478	211	467	127	378	+ 276	800	+ 565	24	146	1,854
1949	44	3,234	2,151	27	1,055	654	1,401	194	419	98	354	- 12	574	+ 240	37	14	26	77	32	173	1,794	1,794	
1948	44	3,073	2,038	33	1,001	636	1,364	189	396	93	231	+ 133	606	- 83	30	11	10	50	34	189	1,819	1,819	
1935	63	2,780	2,213	2	565	223	2,227	304</											

TABLE I (continued)

Standard Industrial Classification minimum list heading (1)	Trade and year (2)		LARGER							ESTABLISHMENTS			SMALL FIRMS	ALL FIRMS (b)										
			Estab-lish-ments (3)	Value of produc-tion (gross output) (4)	Cost of purchased materials and fuel used (5)	Payment for work given out (6)	Net output (7)		Number employed (c) (e)		operatives (9)	other workers (10)	Wages and salaries (c) (11)	Stocks of finished products and work in progress (12)		Stocks of materials and fuel (13)		Investment (14)				Number of firms (21)	Employ-ment (d) (22)	Estimated employ-ment (c) (d) (23)
							value (7)	per person employed (c) (d) (8)	at beginning of year (13)	change during year (14)				at beginning of year (15)	change during year (16)	in new plant and machinery (17)	in new vehicles (18)	in new build-ings (f) (19)	total (20)					
																				£'000 (4)	£'000 (5)			
No. (3)	£'000 (4)	£'000 (5)	£'000 (6)	£'000 (7)	£ (8)	No. (9)	No. (10)	£'000 (11)	£'000 (12)	£'000 (13)	£'000 (14)	£'000 (15)	£'000 (16)	£'000 (17)	£'000 (18)	£'000 (19)	£'000 (20)	No. (21)	No. (22)	No. (23)				
MANUFACTURING TRADES (Contd.)																								
Order XII	Clothing																							
140, 141, 142, and 147 (1, 3 and 5)	Tailoring, Dressmaking, etc. (a) (h)	1950	4,883	381,286	221,769	15,404	144,112	383	339,681	34,067	71,833	18,731	21,642	+ 4,641	53,032	+ 9,084	4,106	20,316	399,597	
		1949	4,933	347,308	196,112	14,639	136,558	374	328,459	34,159	67,671	17,568	18,139	+ 4,081	43,667	+10,126
		1948	5,639	359,372	200,369	15,238	143,765	373	346,183	36,597	71,371	18,549	18,565	+ 4,089	45,298	+10,274	2,699	908	712	4,319	9,021	40,496	431,333	
		1948	5,116	282,892	144,399	12,586	125,906	374	301,598	33,099	60,522	16,081	14,248	+ 3,032	30,272	+12,678	2,346	626	552	3,524	7,244	33,542	384,067	
		1935	4,828	114,655	60,759	3,089	50,807	143	317,922	37,825
143	Hats, Caps and Millinery	1950	296	17,031	9,552	79	7,399	424	15,056	2,301	3,630	1,180	1,186	+ 145	2,169	+ 614	510	2,200	19,793	
		1949	298	15,503	8,734	106	6,663	394	14,592	2,197	3,304	1,032	1,230	- 55	2,380	- 224	185	40	30	255	666	2,794	19,907	
		1948	268	14,875	7,979	112	6,784	406	14,541	2,094	3,206	986	1,344	- 136	2,732	- 382	257	33	32	322	708	3,086	20,318	
		1935	568	13,173	6,788	45	6,340	167	34,213	3,804	
147 (2)	Glove	1950	201	9,827	5,726	189	3,912	375	9,436	959	1,878	509	1,488	- 211	965	+ 151	53	344	10,817	
		1949	211	10,575	6,233	187	4,155	385	9,881	880	1,885	447	1,328	+ 175	996	- 13	91	36	27	154	53	318	11,149	
		1948	202	10,485	5,891	239	4,356	423	9,337	927	1,712	443	1,131	+ 198	994	+ 15	93	20	57	170	52	328	10,668	
		1935	157	3,036	1,638	11	1,387	135	9,565	691	
99 (8) (part) and 147 (4)	Umbrella and Walking Stick	1950	55	2,108	1,192	10	906	339	2,336	323	487	176	166	+ 6	293	+ 49	62	281	2,955	
		1949	50	1,725	937	13	776	318	2,117	304	434	165	164	+ 3	318	- 31	15	3	4	22	68	306	2,749	
		1948	52	2,225	1,180	8	1,037	399	2,246	334	454	177	146	+ 25	338	- 9	35	5	3	43	71	323	2,925	
		1935	70	1,090	688	3	399	141	2,435	392	
148 and 149	Boot and Shoe	1950	989	143,741	88,026	752	54,963	468	105,257	11,940	27,796	6,030	8,525	+ 1,589	15,366	+ 4,218	468	2,275	119,776	
		1949	986	139,981	84,454	538	54,990	463	107,199	11,329	27,259	5,589	7,692	+ 838	13,668	+ 1,689	1,254	281	426	1,961	439	2,310	121,292	
		1948	939	128,993	74,662	412	53,919	483	101,009	10,470	24,569	4,904	5,955	+ 1,819	11,836	+ 1,710	1,114	180	327	1,620	352	1,617	113,570	
		1948	939	128,993	74,662	412	53,919	483	101,009	10,470	
		1935	1,093	41,524	21,584	50	19,890	164	112,910	8,527
Total - Order XII		1950	6,424	553,993	326,265	16,434	211,292	403	471,766	49,590	105,624	26,626	33,007	+ 6,170	71,825	+14,116	5,199	25,416	552,938	
	1949	6,478	515,093	296,469	15,483	203,141	395	462,248	48,869	100,553	24,800	28,553	+ 5,042	61,028	+11,548	
	1948	7,184	527,156	300,726	16,082	210,348	394	479,972	51,307	104,253	25,782	28,978	+ 5,050	62,659	+11,696	4,244	1,268	1,199	6,711	10,247	46,224	586,430		
	1948	6,577	439,470	234,112	13,357	192,002	402	428,731	46,924	90,464	25,591	22,824	+ 4,937	46,173	+14,013	3,844	865	970	5,679	8,427	38,896	531,548		
	1935	6,716	173,479	91,456	3,199	78,824	149	477,045	51,239	
Order XIII	Food, Drink and Tobacco																							
150 and 199 (3) (part)	Grain Milling (a) (g)	1950	359	168,446	140,418	8	28,020	887	24,216	7,280	7,886	3,486	3,311	+ 467	12,394	+ 1,393	832	3,662	35,441	
		1949	367	144,446	114,800	9	29,637	942	24,161	7,196	7,744	3,393	2,455	+ 846	9,245	+ 3,042	1,741	384	930	3,055	900	4,066	35,683	
		1948	338	119,950	95,528	8	24,414	838	22,538	6,543	6,831	2,982	2,284	- 125	9,383	- 910	1,047	306	272	1,625	943	4,225	34,077	
		1948	338	119,950	95,528	8	24,414	838	22,538	6,543	
		1935	502	65,805	53,288	4	12,513	411	23,067	7,384	
151	Bread and Flour Confectionery (a) (g)	1950	27,936	7,092 (o)	229	+	+ 828	3,852	1,629	1,557	7,038	17,720	72,902	197,705	
		1949	1,971	154,621	93,007	47	67,312	552	96,217	25,203 (o)	24,227	6,142 (o)	205	+ 14	6,318	+ 275	2,697	1,448	926	5,072	15,140	64,996	189,035	
		1948	1,881	137,505	79,150	19	63,740	581	86,160	23,025 (o)	
		1935	2,590	60,986	34,285	..	26,701	254	78,527	26,619 (o)	
152	Biscuit (g)	1950	122	55,140	32,167	160	19,348	523	29,793	7,177	6,542	3,140	1,152	+ 350	3,910	+ 1,680	31	220	37,224	
		1949	118	45,437	24,688	136	17,660	545	25,405	6,996	5,446	3,030	1,030	+ 118	3,596	+ 328	1,190	241	266	1,697	34	225	32,664	
		1948	114	39,665	21,136	175	15,478	515	23,104	6,915	4,893	2,832	985	+ 35	3,430	+ 70	853	250	209	1,312	39	243	30,272	
		1935	98	16,867	7,681	-	9,186	209	36,495	7,506	
153 (1)	Wholesale Slaughtering (g) (p)	1950	581	138,539	149,014	2,160	980	983	-	997	..	393	261	+ 3,869	298	- 130	997	
		1949	598	105,298	126,788	1,890	881	875	-	1,007	..	384	161	+ 100	215	+ 83	1,007	
		1948	615	68,620	107,907	1,690	827	801	-	1,033	..	382	142	+ 19	313	- 98	1,033	
		1935	
153 (2)	Bacon Curing and Sausage (a) (g)	1950	387	77,973	87,780	11	13,305	605	18,446	3,451	4,909	1,516	1,529	+ 480	1,530	+ 161	1,158	5,635	28,145	
		1949	396	57,815	59,624	80	12,341	605	16,916	3,390	4,301	1,481	924	+ 546	1,475	+ 67	523	310	268	1,101	1,494	6,681	27,611	
		1948	346	37,179	30,503	125	11,218	616	15,058	3,065	3,648	1,325	376	+ 282	1,332	+ 12	382	215	91	688	1,571	7,650	27,136	
		1935	383	38,156	31,512	4	6,640	317	16,727	4,131	
153 (3)	Preserved Meat (a)	1950	14	6,632	4,251	2	2,378	742	2,529	669														

TABLE 1 (continued)

Standard Industrial Classification minimum list heading	Trade and year		LARGER							ESTABLISHMENTS										SMALL FIRMS		ALL FIRMS (b)	
			Establishments	Value of production (gross output)	Cost of purchased materials and fuel used	Payment for work given out	Net output		Number employed (c) (e)		Wages and salaries (c)		Stocks of finished products and work in progress		Stocks of materials and fuel		Investment				Number of firms	Employment (d)	Estimated employment (c) (d)
							value	per person employed (c) (d)	operatives	other workers	operatives	other workers	at beginning of year	change during year	at beginning of year	change during year	in new plant and machinery	in new vehicles	in new buildings (f)	total			
(1)	(2)	(3)	(4)	(5)	(6)	(7)	(8)	(9)	(10)	(11)	(12)	(13)	(14)	(15)	(16)	(17)	(18)	(19)	(20)	(21)	(22)	(23)	
MANUFACTURING TRADES (Contd.)																							
Order XIII (Contd.)																							
154 (2) Food, Drink and Tobacco (Contd.)																							
	Ice Cream	1950	63	13,780	7,640	2	6,139	1,050	4,827	996	1,341	421	119	+ 74	1,233	+ 856	206	981	6,965
		1949	59	8,505	4,399	-	4,106	1,107	3,090	596	823	231	83	+ 4	590	+ 396	606	76	33	715	615	2,011	5,738
		1948	37	4,070	1,841	-	2,229	1,038	1,732	406	394	157	51	+ 31	428	+ 120	322	32	14	368	235	1,186	3,794
		1935	22	1,761	455	..	1,306	316	3,827	300
155	Sugar and Glucose (g)	1950	52	156,726	125,820	10	15,305	837	15,271	3,011	5,341	1,884	7,436	+ 2,194	8,820	- 371	13	73	18,355
		1949	52	139,664	100,418	17	12,920	715	15,132	2,932	4,979	1,836	4,967	+ 2,498	7,016	+ 1,794	2,134	81	591	2,806	14	71	18,135
		1948	51	135,507	89,760	17	13,754	761	15,124	2,939	4,838	1,711	4,699	+ 2,758	7,507	- 469	1,168	86	337	1,591	19	77	18,148
		1935	59	43,722	37,910	5	5,526 (i)	313	15,503	2,158
156	Cocoa, Chocolate and Sugar Confectionery (g)	1950	344	125,574	85,937	488	39,106	585	55,273	11,545	13,365	5,713	7,986	+ 834	13,194	+ 7,537	398	2,113	69,049
		1949	339	109,893	74,145	420	35,311	565	51,589	10,855	12,017	5,062	7,132	+ 816	14,682	- 1,708	2,157	315	469	2,941	413	2,140	64,656
		1948	313	90,262	60,044	180	30,037	558	43,615	10,192	9,715	4,607	5,629	+ 1,376	11,551	+ 2,868	1,538	236	298	2,071	414	2,154	56,153
		1935	362	36,856	19,420	..	17,436	235	61,931	12,276
157	Preserved Fruit and Vegetables	1950	338	88,903	62,635	355	25,913	551	38,696	8,255	8,444	3,508	7,221	+ 656	11,352	+ 151	174	1,114	48,199
		1949	344	90,193	63,768	298	26,126	546	39,770	8,007	8,377	3,397	6,215	+ 1,062	9,871	+ 1,579	1,399	396	339	2,134	145	915	48,853
		1948	320	78,406	53,515	392	24,499	555	36,406	7,653	7,324	3,051	5,513	+ 613	8,215	+ 1,473	1,152	373	201	1,727	120	795	45,253
		1935	260	19,463	12,254	1	7,208	244	24,474	5,048
162 (1)	Margarine	1950	28	10,158	5,172	5	4,980	990	4,230	800	1,272	414	41	+ 24	617	+ 24	7	49	5,079
		1949	29	11,229	6,036	16	5,177	905	4,872	848	1,399	420	23	+ 24	735	+ 236	302	25	27	354	6	48	5,768
		1948	30	10,159	5,408	11	4,739	857	4,765	766	1,313	396	35	- 13	636	+ 98	383	23	24	429	4	22	5,570
		1935	24	7,402	4,822	-	2,580	620	2,452	1,710
162 (2)	Fish Curing	1950
		1949	228	13,218	10,521	17	2,680	362	6,319	1,014	1,457	360	389	+ 369	360	+ 69	187	51	189	427	350	2,342	9,824
		1948	255	13,392	10,733	6	3,252	409	6,800	1,031	1,538	361	359	+ 43	225	+ 79	162	75	182	419	313	1,952	10,224
		1935	237	4,324	3,312	-	1,012	182	4,974	569
162 (3)	Cattle, Dog and Poultry Foods	1950
		1949	194	60,160	49,841	9	10,310	722	10,610	3,647	3,235	1,553	1,532	+ 583	3,110	+ 1,493	727	175	147	1,049	872	4,028	18,594
		1948	178	35,877	27,852	6	8,019	664	8,801	3,259	2,592	1,317	1,082	+ 315	2,153	+ 754	600	164	169	933	885	4,073	16,411
		1935	154	10,537	6,919	6	3,612	392	6,090	3,130
162 (4)	Vinegar and Other Condiments	1950	32	4,632	2,752	4	1,876	1,093	1,300	413	381	205	386	+ 14	1,199	- 177	40	207	1,933
		1949	32	4,224	2,380	8	1,836	952	1,349	578	380	263	413	- 28	1,311	- 83	54	29	6	89	35	174	2,137
		1948	32	4,213	2,292	1	1,919	885	1,579	589	407	262	331	+ 90	1,215	+ 71	60	7	17	84	37	205	2,374
		1935	39	1,989	890	1	1,098	443	1,667	814
162 (5)	Starch	1950	19	5,229	3,369	4	1,856	684	2,069	641	635	303	256	+ 68	465	+ 18	12	72	2,784
		1949	19	4,535	2,876	1	1,658	657	1,957	566	569	271	221	+ 39	404	+ 53	75	11	37	123	9	56	2,581
		1948	19	3,762	2,339	-	1,423	560	1,944	597	551	286	232	- 7	383	+ 25	73	7	42	123	9	60	2,616
		1935	13	1,219	621	-	598	336	1,434	344
162 (6)	Ice	1950
		1949	16	724	197	-	527	787	572	96	180	45	3	- 1	14	+ 1	102	5	23	130	111	408	1,077
		1948	15	716	171	-	544	861	540	92	165	39	2	+ 1	12	+ 3	71	4	21	96	113	401	1,033
		1935	75	993	222	-	771	418	1,564	281
	Miscellaneous Preserved Foods	1950	257	51,016	34,230	60	16,726	679	18,249	6,362	4,269	3,012	2,886	- 63	6,067	+ 443	172	978	25,702
		1949	265	50,929	33,087	75	17,767	683	19,401	6,564	4,372	3,170	2,693	+ 346	6,521	- 43	1,064	233	271	1,568	167	914	26,939
		1948	277	51,440	31,370	98	19,973	762	19,565	6,631	4,220	3,221	2,049	+ 580	5,999	+ 560	1,035	175	241	1,451	183	1,090	27,469
		1935	156	11,340	5,951	5	5,384	365	11,496	3,235
163	Brewing and Malting (g)	1950	655	427,316	97,137	355	78,305	1,107	55,871	14,844	17,154	8,797	20,125	- 51	21,439	- 555	99	523	71,275
		1949	695	452,085	95,306	362	81,347	1,123	57,185	15,240	17,063	8,735	20,365	+ 237	20,651	+ 1,037	4,730	1,055	1,390	7,175	114	585	73,051
		1948	695	465,390	84,179	415	90,816	1,278	56,621	14,413	16,132	7,914	17,177	+ 3,082	17,185	+ 2,916	4,165	1,004	996	6,165	112	568	71,946
		1935	592	122,400	22,976	114	44,010 (i)	789	43,946	11,863
164	Wholesale Bottling (g)	1950
		1949	505	133,117	107,648	348	25,121	962	20,695	5,363	4,838	2,568	32,788	+ 5,564	7,556	+ 789	1,098	280	172	1,550	486	3,047	29,310
		1948	502	130,325	104,678	229	25,418	968	21,077	5,143	4,744	2,452	25,900	+ 6,119	8,200	+ 814	888	289	95	1,272	490	3,037	29,595
		1935	533	54																			

TABLE I (continued)

Standard Industrial Classification minimum list heading	Trade and year		LARGER							ESTABLISHMENTS							SMALL FIRMS		ALL FIRMS (b)					
			Establishments	Value of production (gross output)	Cost of purchased materials and fuel used	Payment for work given out	Net output		Number employed (c) (e)		Wages and salaries (c)		Stocks of finished products and work in progress		Stocks of materials and fuel		Investment				Number of firms	Employment (d)	Estimated employment (c) (d)	
							value	per person employed (c) (d)	operatives	other workers	operatives	other workers	at beginning of year	change during year	at beginning of year	change during year	in new plant and machinery	in new vehicles	in new buildings (f)	total				
																								1950
(1)	(2)		(3)	(4)	(5)	(6)	(7)	(8)	(9)	(10)	(11)	(12)	(13)	(14)	(15)	(16)	(17)	(18)	(19)	(20)	(21)	(22)	(23)	
			No.	£'000	£'000	£'000	£'000	£	No.	No.	£'000	£'000	£'000	£'000	£'000	£'000	£'000	£'000	£'000	£'000	No.	No.	No.	
MANUFACTURING TRADES (Contd.)																								
Order XIII (Contd.)																								
168 (2) and (3) Food, Drink and Tobacco (Contd.)																								
Soft Drinks, British Wines and Cider (g)																								
		1950	559	37,056	18,023	16	16,294	669	19,462	4,706	4,879	2,257	2,508	+ 120	4,785	+ 1,215	625	3,817	28,375	
		1949	581	36,987	17,521	14	16,681	687	19,639	4,440	4,755	2,673	2,300	+ 180	4,678	+ 245	1,506	508	319	2,333	655	4,023	28,439	
		1948	527	32,560	14,090	22	14,733	718	16,335	4,033	3,758	1,763	1,949	+ 408	2,995	+ 1,328	1,155	397	307	1,859	582	3,531	24,701	
		1935	384	9,342	3,273	-	5,369(i)	341	12,316	3,434	
		1950	100	735,861	676,438	73	59,350	1,270	37,531	9,206	9,895	5,135	43,303	+ 4,859	15,554	+ 1,579	31	141	46,888	
		1949	102	718,852	665,815	146	52,891	1,111	38,438	9,171	9,810	4,945	46,987	- 3,049	16,054	- 472	2,090	119	212	2,421	33	177	47,799	
		1948	103	667,277	621,418	231	45,628	1,019	36,322	8,458	8,760	4,413	43,583	+ 2,164	15,989	+ 145	1,640	77	785	2,502	32	169	44,995	
		1935	118	121,960	93,580	-	28,380	662	35,695	7,164	
		1950	4,132	2,204,995	1,625,563	4,149	346,698	817	340,017	83,668	90,719	42,241	103,633	+14,409	110,643	+15,279	3,868	20,005	445,651	
		1949	4,232	2,071,870	1,474,517	3,781	332,134	797	333,539	82,392	86,183	40,640	100,440	+ 4,359	104,338	+ 7,071
		1948	7,687	2,644,458	1,942,500	4,269	461,133	734	503,252	123,509	134,517	54,243	135,838	+11,073	124,167	+10,431	29,112	6,946	8,371	44,430	24,389	106,087	738,714	
		1948	7,348	2,397,470	1,700,445	3,917	438,323	754	462,837	115,755	118,706	48,896	116,449	+18,331	111,735	+10,732	21,800	5,917	5,910	33,627	21,437	97,614	696,866	
		1935	6,857	665,090	405,456	222	203,131	388	415,654	108,313
Total - Order XIII (m)																								
Order XIV Manufactures of Wood and Cork																								
170 and 179 Timber																								
		1950	1,947	121,445	73,646	535	47,264	513	78,989	12,612	23,655	6,051	7,193	+ 803	15,004	+ 1,940	4,894	21,499	117,121	
		1949	1,928	114,600	68,305	722	45,574	492	79,367	12,616	22,739	5,733	6,822	+ 472	14,598	+ 756	1,782	798	797	3,377	5,550	24,322	120,970	
		1948	1,885	109,586	62,127	682	46,776	513	78,414	12,191	21,822	5,460	5,456	+ 725	14,208	+ 1,259	1,786	770	683	3,239	5,643	23,212	119,709	
		1935	1,524	32,479	18,496	68	13,915	201	60,137	8,981	
		1950	1,407	110,079	60,062	871	49,146	504	85,097	12,047	29,203	6,260	6,311	+ 1,041	11,541	+ 3,161	2,223	10,086	108,526	
		1949	1,365	96,909	52,668	734	43,508	478	79,304	11,141	25,365	5,543	5,717	+ 605	10,472	+ 963	1,305	487	402	2,194	2,638	11,625	103,776	
		1948	1,221	80,947	41,326	690	38,930	500	68,227	9,226	20,921	4,303	4,439	+ 1,242	8,415	+ 1,662	1,135	352	374	1,861	3,037	13,128	92,773	
		1935	1,335	31,198	14,587	99	16,512	190	78,163	8,673	
		1950	284	22,682	15,370	64	7,248	482	12,976	2,016	3,298	959	572	+ 181	2,717	+ 782	250	1,494	16,668	
		1949	285	20,669	13,670	74	6,925	475	12,608	1,930	3,077	900	554	+ 61	2,718	+ 68	224	111	39	374	294	1,674	16,336	
		1948	271	17,735	10,999	84	6,653	492	11,721	1,751	2,727	792	485	+ 107	2,062	+ 535	176	79	34	289	338	1,855	15,599	
		1935	363	6,766	3,845	20	2,901	167	15,458	1,916	
		1950	235	16,179	6,665	476	9,038	570	12,932	2,887	4,629	1,359	2,121	- 206	1,552	+ 309	390	1,625	17,722	
		1949	226	14,973	6,144	389	8,440	540	12,991	2,589	4,479	1,239	1,844	+ 198	1,386	+ 69	136	69	46	251	420	1,653	17,438	
		1948	193	13,152	4,237	520	8,395	591	11,850	2,308	3,907	1,059	1,375	+ 252	1,128	+ 178	135	44	108	287	244	1,058	15,449	
		1935	247	7,059	3,191	2	3,866	229	14,530	2,340	
		1950	505	28,896	16,978	119	11,799	488	21,603	2,457	6,020	1,350	716	+ 176	3,089	- 3	626	3,404	27,933	
		1949	495	27,842	16,628	108	11,106	471	21,069	2,376	5,646	1,239	630	+ 118	2,868	+ 84	299	135	140	574	608	3,012	26,942	
		1948	475	25,704	14,317	93	11,295	499	20,212	2,307	5,133	1,123	559	+ 10	2,458	+ 186	221	121	74	416	602	3,091	26,608	
		1935	360	6,423	3,498	14	2,911	181	14,639	1,412	
		1950	4,378	299,281	172,721	2,065	124,495	509	211,607	32,019	66,805	15,979	16,913	+ 1,995	33,903	+ 6,189	8,383	38,108	287,970	
		1949	4,299	274,993	157,415	2,027	115,552	487	205,339	30,652	61,306	14,654	15,567	+ 1,454	32,042	+ 1,939	3,746	1,600	1,425	6,771	9,510	42,286	285,462	
		1948	4,045	247,124	133,006	2,069	112,049	511	190,424	27,783	54,510	12,737	12,314	+ 2,337	28,271	+ 3,819	3,452	1,366	1,273	6,091	9,864	42,344	270,138	
		1935	3,829	83,924	43,615	204	40,105	194	182,927	23,322	
Order XV Paper and Printing																								
180 Paper and Board																								
		1950	275	164,865	104,139	175	60,551	855	62,041	8,776	20,599	4,798	5,915	- 93	10,321	+10,549	27	171	71,032	
		1949	281	135,033	95,582	49	39,402	573	60,299	8,442	19,024	4,366	5,628	+ 396	11,495	- 1,287	5,464	138	945	6,547	32	190	68,998	
		1948	275	129,449	85,828	89	43,532	658	58,276	7,849	17,325	4,045	4,446	+ 1,121	9,137	+ 1,856	4,176	162	741	5,079	45	235	66,386	
		1935	257	39,700	23,193	53	16,454	284	52,909	4,978	
		1950	33	8,918	4,228	1	4,688	819	4,848	877	1,479	435	306	+ 212	475	+ 119	3	28	5,755	
		1949	32	6,642	3,078	33	3,531	774	3,819	740	995	388	291	+ 20	364	+ 116	157	16	26	199	5	15	4,577	
		1948	30	5,316	2,311	28	2,978	758	3,225	703	814	375	232	+ 59	314	+ 48	81	14	13	107	4	22	3,953	
		1935	37	3,264	1,261	16	1,987	326	5,082	1,014	
		1950	468	58,830	31,958	463	26,408	549	41,715	6,226	9,750	3,459	2,114	+ 617	6,140	+ 1,927	105	731	48,839	
		1949	454	45,744	24,699	428	20,616	481	37,094	5,658	8,173</													

TABLE I (continued)

Standard Industrial Classification minimum list heading	Trade and year		LARGER							
	1950	United Kingdom	Estab-lish-ments	Value of produc-tion (gross output)	Cost of purchased materials and fuel used	Payment for work given out	Net output		Number employed (c) (e)	
	1949	1948					Great Britain	United Kingdom	value	per person employed (c) (d)
(1)	(2)	(3)	(4)	(5)	(6)	(7)	(8)	(9)	(10)	
		No.	£'000	£'000	£'000	£'000	£	No.	No.	
MANUFACTURING TRADES (Contd.)										
Paper and Printing (Contd.)										
186	Newspaper and Periodical Printing and Publishing (g) (m)	1950 1949 1948 1935	579 583 542 510	134,164 123,978 105,291 50,772	36,375 30,813 22,812 12,541	15,702 13,842 11,031 423	82,087 79,323 71,448 37,808	853 867 847 476	58,602 55,154 50,904 49,070	37,564 36,055 33,419 30,384
189	Printing and Publishing, Bookbinding, Engraving, etc. (g)	1950 1949 1948 1935	120 121 120 ..	23,718 22,160 21,371 ..	3,310 3,224 2,796 ..	11,619 11,234 10,989 ..	8,788 7,702 7,586 ..	1,286 1,185 1,241 ..	1,437 1,443 1,357 ..	5,322 5,044 4,741 ..
	Publishers (non-printing firms)	1950 1949 1948 1935	120 121 120 ..	23,718 22,160 21,371 ..	3,310 3,224 2,796 ..	11,619 11,234 10,989 ..	8,788 7,702 7,586 ..	1,286 1,185 1,241 ..	1,437 1,443 1,357 ..	5,322 5,044 4,741 ..
	Printers, Bookbinders, etc. (q)	1950 1949 1948 1935	2,582 2,537 2,398 2,701	153,575 137,561 131,045 60,713	46,489 40,827 35,976 18,638	12,966 11,977 10,498 1,751	94,121 84,758 84,571 40,324	533 499 521 223	146,646 141,118 135,766 154,527	29,234 28,094 26,145 26,166
	Total - Order XV (m)	1950 1949 1948 1935	4,456 4,426 4,165 4,428	610,101 527,647 488,999 182,233	262,387 228,146 198,669 69,133	41,385 37,990 33,535 2,323	306,327 261,512 256,796 110,777	677 608 634 275	353,608 335,709 317,940 331,041	98,088 93,247 86,391 72,009
Order XVI Other Manufacturing Industries										
190	Rubber	1950 1949 1948 1935	325 315 326 185	162,069 118,782 128,023 27,539	103,758 70,318 74,332 13,496	429 326 444 15	57,881 48,139 53,247 14,028	631 560 611 259	74,942 69,916 72,018 44,556	16,802 15,988 15,100 9,542
191	Linoleum, Leathercloth and Allied Trades	1950 1949 1948 1935	32 28 28 35	34,007 29,331 27,512 9,083	23,172 19,723 18,809 4,567	180 193 148 1	10,654 9,415 8,554 4,515	757 729 704 365	10,833 10,016 9,405 10,733	3,235 2,903 2,750 1,634
192	Brushes and Brooms	1950 1949 1948 1935	217 231 244 169	14,572 14,422 15,647 3,759	8,280 8,150 8,502 1,834	24 21 65 7	6,269 6,251 7,081 1,918	475 461 495 168	11,068 11,535 12,333 8,954	2,085 1,948 1,913 2,463
193(1)	Toys and Games	1950 1949 1948 1935	196 212 216 108	20,233 19,211 16,374 3,121	10,027 9,521 7,250 1,458	199 190 222 2	10,007 9,500 8,901 1,661	426 403 429 149	20,635 20,790 18,168 10,112	2,828 2,746 2,548 1,064
193(2)	Sports Requisites	1950 1949 1948 1935	133 134 132 141	6,288 5,841 5,902 2,827	2,910 2,516 2,437 1,293	8 11 28 2	3,369 3,314 3,437 1,532	422 420 412 191	6,797 6,692 7,140 6,939	1,142 1,168 1,170 1,066
194	Miscellaneous Stationers Goods	1950 1949 1948 1935	107 111 112 67	13,436 12,905 10,901 3,042	6,323 5,788 4,684 1,217	21 118 192 1	7,092 7,000 6,025 1,824	609 611 573 244	9,290 9,265 8,570 5,978	2,352 2,191 1,938 1,496
195(1)	Cinematograph Film Production (g)	1950 1949 1948 1935	68 57 71 ..	13,317 16,046 18,830 ..	1,208 1,478 1,983 ..	570 613 581 ..	8,884 10,406 11,573 ..	1,185 1,127 1,130 ..	2,748 3,714 4,562 ..	4,752(r) 5,517(r) 5,679(r) ..

ESTABLISHMENTS										SMALL FIRMS		ALL FIRMS (b)
Wages and salaries (c)		Stocks of finished products and work in progress		Stocks of materials and fuel		Investment				Number of firms	Employment (d)	Estimated employment (c) (d)
operatives	other workers	at beginning of year	change during year	at beginning of year	change during year	in new plant and machinery	in new vehicles	in new buildings (f)	total			
(11)	(12)	(13)	(14)	(15)	(16)	(17)	(18)	(19)	(20)	(21)	(22)	(23)
£'000	£'000	£'000	£'000	£'000	£'000	£'000	£'000	£'000	£'000	No.	No.	No.
23,918	19,861	2,379	+ 21	6,623	- 550	152	1,017	97,368
22,109	18,564	1,991	+ 332	6,938	- 259	2,105	376	325	2,806	196	1,401	96,477
19,303	16,578	1,437	+ 608	6,063	+ 748	1,556	184	248	1,988	216	1,365	92,744
..	85,955
452	2,692	5,892	+ 595	1,084	+ 62	216	1,059	7,922
404	2,463	5,097	+ 832	1,148	- 40	39	22	25	86	230	1,032	7,595
363	2,182	3,519	+ 1,367	1,014	+ 276	27	20	18	65	224	1,037	7,365
..
44,482	14,535	12,347	+ 1,131	13,506	+ 3,176	3,646	19,177	197,435
40,632	12,923	11,761	+ 593	14,804	- 1,471	4,753	346	955	6,054	3,910	19,079	190,523
37,028	11,601	10,093	+ 1,509	12,047	+ 2,448	3,921	248	810	4,979	3,272	16,636	184,064
..
109,959	50,683	31,572	+ 2,858	43,219	+17,186	4,357	23,456	478,144
99,723	46,135	29,124	+ 2,674	48,224	- 5,235	15,778	1,182	2,995	19,954	4,699	23,731	477,233
89,825	41,332	23,489	+ 5,450	40,073	+ 7,083	12,595	877	2,382	15,854	4,120	21,580	455,559
..	432,541
24,035	7,727	7,905	+ 2,915	12,383	+ 9,895	192	1,033	93,067
21,019	7,025	7,648	+ 284	14,160	- 1,544	4,384	216	1,049	5,649	240	1,262	87,369
21,539	6,320	5,326	+ 1,894	10,916	+ 3,183	3,791	192	930	4,913	205	1,087	88,645
..
3,663	1,487	4,392	+ 912	3,776	+ 1,403	3	13	14,098
3,165	1,398	4,426	+ 28	4,420	- 761	1,071	63	402	1,536	7	26	12,949
2,794	1,256	2,944	+ 1,496	4,009	+ 411	927	26	329	1,281	5	17	12,179
..
2,473	912	1,501	- 45	2,955	- 52	258	1,465	14,776
2,506	861	1,418	+ 119	2,938	+ 6	228	29	156	413	253	1,310	14,934
2,601	855	1,052	+ 410	2,594	+ 326	290	26	93	408	238	1,355	15,793
..
4,719	1,298	1,682	+ 337	1,935	+ 389	183	1,008	25,045
4,621	1,163	1,629	+ 62	2,007	+ 5	397	37	60	494	267	1,337	25,624
3,850	1,153	1,553	+ 65	1,815	+ 126	437	29	124	590	320	1,652	23,159
..
1,734	498	895	+ 99	780	+ 100	156	823	8,863
1,661	475	857	+ 32	857	- 66	72	15	68	155	156	800	8,762
1,685	475	655	+ 210	799	+ 67	98	12	62	172	155	820	9,260
..
2,243	1,181	1,614	+ 18	2,340	+ 164	49	303	11,969
2,207	1,009	1,312	+ 363	2,020	+ 314	293	27	55	375	48	309	11,797
1,898	852	1,020	+ 235	1,541	+ 442	245	20	48	314	45	292	10,819
..
1,282	4,877(r)	(j)	(j)	358	+ 10	57	282	7,782
1,756	5,828(r)	(j)	(j)	387	- 28	835	33	376	1,844	55	296	9,540
2,100	5,866(r)	(j)	(j)	272	+ 101	1,322	41	817	2,180	47	239	10,490
..

TABLE I (continued)

Standard Industrial Classification minimum list heading (1)	Trade and year 1950 } United Kingdom 1949 } 1948 } Great Britain 1935 } United Kingdom (2)		LARGER							SMALL FIRMS			ALL FIRMS (b)
			Estab-lish-ments (3)	Value of produc-tion (gross output) (4)	Cost of purchased materials and fuel used (5)	Payment for work given out (6)	Net output		Number employed (c) (e)		Number of firms (21)	Employ-ment (d) (22)	Estimated employ-ment (c) (d) (23)
							value (7)	per person employed (c) (d) (8)	operatives (9)	other workers (10)			
No.	£'000	£'000	£'000	£'000	£	No.	No.	No.	No.	No.			
MANUFACTURING TRADES (Contd.)													
Order XVI (Contd.)	Other Manufacturing Industries (Contd.)												
195(2)	Cinematograph Film	1950	18	5,546	3,075	10	2,462	1,048	1,984	363			
	Printing	1949	21	5,050	2,621	13	2,416	1,018	2,018	355			
		1948	23	4,306	2,417	11	1,878	802	1,860	482			
		1935	15	1,439	965	1	473	555	768	84			
199(1) and 199(3) (part)	Plastic Goods and Fancy Articles	1950	471	28,676	13,913	175	14,588	445	27,560	5,153			
		1949	479	25,764	12,031	135	13,598	422	27,094	5,019			
		1948	470	27,705	12,484	264	14,957	433	29,240	5,258			
		1935	323	4,965	2,150	27	2,788	149	16,403	2,251			
199(3) (part)	Incandescent Mantles	1950	8	532	211	1	320	379	792	52			
		1949	9	569	219	1	349	400	799	72			
		1948	9	595	242	1	351	383	870	44			
		1935	10	406	148	-	258	203	1,167	104			
	Total - Order XVI (m)	1950	1,575	298,676	172,877	1,617	121,526	591	166,649	38,764			
		1949	1,597	247,921	132,363	1,620	110,388	552	161,839	37,907			
		1948	1,631	255,795	132,541	1,955	116,005	576	164,166	36,882			
		1935	1,053	56,182	27,130	57	28,996	231	105,610	19,704			
	Unclassified (n)	1935	..	2,860	1,120	-	1,540	162	8,974	545			
Orders III-XVI	Total - manufacturing trades (m)	1950	53,432	11,826,637	7,196,913	213,360	4,178,796	606	5,731,463	1,155,017			
		1949	53,204	10,389,611	6,164,222	195,429	3,759,342	559	5,604,823	1,109,601			
		1948	58,094	11,143,985	6,721,539	206,193	3,968,068	562	5,872,699	1,178,945			
		1948	55,240	10,029,188	5,816,962	179,515	3,770,017	561	5,598,748	1,106,254			
		1935	49,218(1)	2,899,779	1,588,952	23,859	1,225,746	228	4,679,071	696,441			
ORDERS II, XVII, XVIII, XX (part), XXIV (part): NON-MANUFACTURING TRADES													
Order II	Mining and Quarrying												
10	Coal Mines (s)	1950	1,077(t)	467,919	85,713	-	382,205	521	696,853	35,938			
		1949	1,163(t)	468,857	86,741	20	382,096	503	723,559	36,051			
		1948	1,181(t)	447,062	82,392	40	364,630	478	729,021	33,868			
		1935	1,334(t)	146,362	25,059	..	121,303	159	746,779	17,396			
12, 14, 19(3) and 19(4)	Non-Metalliferous Mines and Quarries (other than Coal, Salt and Slate)	1950	1,188	47,908	15,808	121	31,979	673	42,057	5,255			
		1949	1,219	44,468	14,306	177	29,984	621	42,555	5,416			
		1948	1,066	41,440	11,864	165	29,412	648	40,077	5,157			
		1935	1,495	13,574	3,471	-	10,103	192	49,174	3,490			
19(2)	Salt Mines, Brine Pits and Salt Works	1950	23	7,995	3,967	-	4,028	737	4,420	1,049			
		1949	24	7,388	3,784	-	3,605	633	4,676	1,021			
		1948	23	7,051	3,363	-	3,688	638	4,824	958			
		1935	28	1,867	750	-	1,117	245	4,149	400			
13	Slate Quarries and Mines	1950	30	2,157	198	3	1,956	397	4,672	253			
		1949	30	2,150	183	-	1,968	393	4,761	249			
		1948	30	2,094	158	-	1,936	386	4,780	236			
		1935	45	1,666	121	-	1,545	161	9,322	276			
11 and 19(1)	Metalliferous Mines and Quarries	1950	59	6,086	1,806	-	4,280	547	7,093	731			
		1949	59	5,539	1,623	-	3,916	496	7,207	685			
		1948	57	4,755	1,475	-	3,280	451	6,632	641			
		1935	85	3,059	722	-	2,387	215	10,296	554			
	Total - Order II (s)	1950	2,377	532,065	107,492	124	424,448	532	755,095	43,226			
		1949	2,495	528,402	106,635	199	421,569	510	782,758	43,422			
		1948	2,357	502,403	99,252	205	402,946	488	785,334	40,860			
		1935	2,987	166,528	30,123	..	136,405	162	819,720	22,116			

ESTABLISHMENTS

ESTABLISHMENTS										SMALL FIRMS		ALL FIRMS (b)
Wages and salaries (c)		Stocks of finished products and work in progress		Stocks of materials and fuel		Investment				Number of firms (21)	Employ-ment (d) (22)	Estimated employ-ment (c) (d) (23)
operatives (11)	other workers (12)	at beginning of year (13)	change during year (14)	at beginning of year (15)	change during year (16)	in new plant and machinery (17)	in new vehicles (18)	in new buildings (f) (19)	total (20)			
(11)	(12)	(13)	(14)	(15)	(16)	(17)	(18)	(19)	(20)	No.	No.	No.
822	230	88	+ 12	363	+ 68	6	30	2,422
837	229	77	+ 19	339	+ 68
752	255	77	+ 1	303	+ 41	303	14	116	433	10	42	2,416
..	191	9	111	311	5	18	2,361
6,901	2,437	2,020	+ 219	3,200	+ 337
6,594	2,242	2,305	- 293	3,465	- 247	490	2,806	35,962
7,005	2,253	1,832	+ 343	3,300	+ 38	712	78	333	1,123	524	2,922	35,589
..	841	56	188	1,086	522	2,914	38,129
138	30	58	- 14	105	+ 1
139	35	47	+ 12	108	- 1	1	10	854
142	25	43	+ 3	78	+ 38	6	1	..	7	874
..	4	4	917
48,010	20,677	20,155(j)	+ 4,453(j)	28,195	+ 12,315	1,395	7,773	214,838
44,503	20,265	19,719(j)	+ 626(j)	30,703	- 2,256	8,302	512	3,216	12,030	1,560	8,304	209,854
44,365	19,312	14,502(j)	+ 4,657(j)	25,625	+ 4,772	8,145	410	2,703	11,258	1,542	8,394	211,752
..
1,774,918	563,028	1,074,063(j)	+126,949(j)	977,414	+183,766	48,730	244,774	7,169,811
1,667,428	519,301	1,017,612(j)	+ 62,066(j)	938,991	+ 36,998	7,168,920
1,743,276	545,040	1,077,759(j)	+ 72,571(j)	979,870	+ 40,006	232,003	24,400	68,524	324,927	79,138	368,027	7,467,152
1,600,886	490,790	880,827(j)	+157,741(j)	845,849	+119,517	188,764	19,596	51,958	260,318	73,961	349,649	7,149,947
..
280,224	16,423	162	845	733,749
288,278	16,292	760,589
283,962	15,619	2,416	+ 812	33,039	+ 8,987	20,749	698	6,478	27,925	..	853	763,799
..	16,057	567	4,438	21,062	139	774	..
14,742	2,469	1,507	+ 25	2,338	+ 356	933	5,231	53,229
14,211	2,430	1,319	+ 148	1,934	+ 83
13,091	2,229	863	+ 418	1,467	+ 442	3,282	607	265	4,154	1,222	6,700	55,430
..	2,777	557	228	3,563	1,014	5,529	51,534
1,451	572	290	- 87	745	+ 79
1,490	576	280	+ 11	870	- 121	2	12	5,481
1,447	497	170	+ 109	761	+ 105	291	29	43	363	..	12	5,709
..	259	32	27	319	2	12	5,794
1,420	118	110	+ 35	49	+ 1	4	25	4,956
1,409	116	92	+ 20	47	+ 2	61	7	5,043
1,385	104	100	- 6	44	+ 5	51	7	3	61	7	31	5,049
..	47	11	4	62	7	32	..
2,492	347	363	- 4	564	+ 189
2,389	321	386	- 20	492	+ 66	16	88	7,912
2,114	289	492	- 46	409	+ 70	867	17	104	988	19	101	7,993
..	245	55	11	310	18	91	7,394
310,329												

TABLE 1 (continued)

Standard Industrial Classification minimum list heading	Trade and year		LARGER							
			Estab-lish-ments	Value of produc-tion (gross output)	Cost of purchased materials and fuel used	Payment for work given out	Net output		Number employed (c) (e)	
							value	per person employed (c) (d)	operatives	other workers
(1)	(2)	(3)	(4)	(5)	(6)	(7)	(8)	(9)	(10)	
			No.	£'000	£'000	£'000	£'000	£	No.	No.
NON-MANUFACTURING TRADES (Contd.)										
Order XVII	Building and Contracting									
200 (1), 200 (3) and 202 (2) (part)	Building and Contracting	1950
1949		16,073 (u)	903,755	476,781 (v)	..	426,974	439	865,044	96,286	..
1948		16,145 (u)	815,736	418,260 (v)	..	397,477	422	841,414	88,825	..
1935		8,870 (u)	213,938	114,600 (v)	..	99,338	198	461,971	39,769	..
200 (2) and 202 (2) (part)	Local Authorities (Building and Civil Engineering)	1950
1949		915	118,313	51,921 (v)	..	66,992	335	179,472	18,654	..
1948		970	109,312	46,935 (v)	..	62,377	319	177,178	18,449	..
1935		1,079	51,601	21,146 (v)	..	30,455	159	179,045	12,007	..
202 (part)	Railways (Civil Engineering) (n)	1950
1949		118	66,372	24,725	..	41,647	392	98,820	7,547	..
1948		125	63,168	22,303	..	40,865	378	100,577	7,598	..
1935		..	23,522	7,410	..	16,112	157	95,326	7,195	..
202 (2) (part)	Tram, Trolley Bus and Omnibus Undertakings (Civil Engineering)	1950
1949		20	3,590	1,388	3	2,200	328	6,095	608	..
1948		20	3,337	1,128	12	2,196	325	6,056	709	..
1935		25	3,341	1,369	..	1,972	169	11,166	498	..
202 (2) (part)	Canal, Dock and Harbour Undertakings (Civil Engineering)	1950
1949		124	13,001	3,269	19	9,712	398	22,287	2,105	..
1948		100	11,094	2,579	7	8,509	362	21,572	1,921	..
1935		79	3,084	914	..	2,170	152	13,220	1,082	..
	Total - Order XVII	1950
		1949	17,250	1,105,030	558,084	21	546,925	418	1,171,718	125,200
		1948	17,360	1,002,647	491,205	19	511,423	401	1,146,797	117,502
		1935	..	295,487	145,439	..	150,047	183	760,728	60,551
Order XVIII	Gas, Electricity and Water									
210	Gas Supply Industry (w) (x)	1950	1,074	206,184	115,476	..	90,708	636	109,739	32,846
		1949	891	192,034	108,313	..	83,721	602	107,830	31,151
		1948	705	181,557	100,795	..	80,762	613	103,368	28,452
		1935	697	64,805	25,096	..	39,709	328	96,524	24,725
211	Electricity Supply Industry (x)	1950	365 (aa)	289,409	120,819	..	168,589	936	123,689	56,469
		1949	360 (aa)	263,509	109,823	..	153,687	910	117,774	51,158
		1948	350 (aa)	241,394	105,472	..	135,922	894	107,985	43,976
		1935	624	87,833	24,141	..	63,692	608	79,216	25,542
212	Water Undertakings	1950	355 (bb)	49,128	10,881	..	38,247	1,054	28,476	7,794
		1949	349 (bb)	47,722	10,316	..	37,406	1,052	28,050	7,509
		1948	335 (bb)	44,399	9,080	..	35,320	1,043	26,749	7,123
		1935	372 (bb)	28,222	3,646	..	24,576	769	26,644	5,330
	Total - Order XVIII	1950	..	544,721	247,176	..	297,544	829	261,904	97,109
		1949	..	503,266	228,451	..	274,815	800	253,654	89,818
		1948	..	467,350	215,346	..	252,003	793	238,112	79,551
		1935	..	180,861	52,883	..	127,978	496	202,384	55,597

ESTABLISHMENTS										SMALL FIRMS		ALL FIRMS (b)
Wages and salaries (c)		Stocks of finished products and work in progress		Stocks of materials and fuel		Investment				Number of firms	Employment (d)	Estimated employment (c) (d)
operatives	other workers	at beginning of year	change during year	at beginning of year	change during year	in new plant and machinery	in new vehicles	in new buildings (f)	total			
(11)	(12)	(13)	(14)	(15)	(16)	(17)	(18)	(19)	(20)	(21)	(22)	(23)
£'000	£'000	£'000	£'000	£'000	£'000	£'000	£'000	£'000	£'000	No.	No.	No.
287,641	39,520
265,144	34,278	110,683	359,359	1,383,261
..	92,666	296,596	1,307,619
..
52,108	7,878
49,305	7,528	592	3,312	201,534
..	438	2,386	198,293
..
32,049	3,442
32,904	3,326	16	67	106,434
..	10	39	108,214
..
1,862	240
1,754	265	1	9	6,712
..
..
7,185	964
6,586	828	81	360	24,752
..	80	375	23,891
..
380,845	52,044	111,373	363,107	1,722,693
355,682	46,225	93,194	299,396	1,644,782
..
37,689	14,232	4,584 (y)	-1,633 (y)	3	13	142,598
35,669	12,962	3,679 (y)	+ 916 (y)	14	65	139,046
33,658	11,634	1,989 (y)	+1,570 (y)	18,807	+2,048	25,516 (z)	1,122	2,253	28,891	363	1,987	133,808
..
43,007	24,897	4	5	180,163
39,211	21,287	7	12	168,944
35,022	17,791	12	39	152,010
..
9,351	3,626	5,192	+ 715	681	2,999	39,391
8,985	3,413	4,799	+ 391	763	3,044	38,650
8,303	3,129	4,298	+ 448	7,171	159	8,191	15,521	647	3,238	37,290
..	6,062	118	3,632	9,812
..
90,047	42,755	688	3,017	362,152
83,865	37,662	784	3,121	346,640
76,983	32,553	1,022	5,264	323,108
..

TABLE 1 (continued)

Standard Industrial Classification minimum list heading	Trade and year		LARGER							ESTABLISHMENTS			SMALL FIRMS	ALL FIRMS (b)									
			Estab-lish-ments	Value of produc-tion (gross output)	Cost of purchased materials and fuel used	Payment for work given out	Net output		Number employed (c) (e)		Investment				Number of firms	Employ-ment (d)	Estimated employ-ment (c) (d)						
							value	per person employed (c) (d)	operatives	other workers	at beginning of year	change during year	at beginning of year	change during year				in new plant and machinery	in new vehicles	in new build-ings (f)	total		
(1)	1950 } United Kingdom 1949 } 1948 } Great Britain 1935 } United Kingdom	(3)	(4)	(5)	(6)	(7)	(8)	(9)	(10)	(11)	(12)	(13)	(14)	(15)	(16)	(17)	(18)	(19)	(20)	(21)	(22)	(23)	
NON-MANUFACTURING TRADES (Contd.)																							
Order XX (part)	Distributive Trades																						
99(8) (part) and 241(1)	Scrap Metal (m)	1950 1949 1948 1935 326 65,165 51,412 2,581 11,172 757 11,694 2,965 3,627 1,376 3,709(cc) + 892(cc) 286 194 129 609 1,050 5,540 21,005	
242(1) (part)	Tea Blending and Coffee Roasting (g) (m)	1950 1949 1948 1935	.. 110 106 56,275 52,578 50,603 47,432 59 89 5,719 5,149 799 712 4,877 4,788 1,141 1,076 1,059 992 1,333 1,118 + 388 + 88 4,288 4,214 +1,403 + 209 192 128 45 33 37 26 274 187 204 154 957 620 8,163 8,130
244(3) (part)	Textile Converting (g) (m) (dd)	1950 1949 1948 1935	1,778 1,194 1,186 ..	334,608 261,814 212,643 ..	237,250 184,054 147,031 ..	47,664 37,214 31,013 ..	49,694 40,545 35,796 ..	(dd) 2,604 2,501 ..	19,700 5,726 4,866 ..	11,899 1,575 1,257 ..	6,553 5,792	49,620 34,308 21,437 ..	+8,326 +7,422 +6,033 ..	15,365 16,185 16,001 ..	+3,050 + 698 +5,998 99 78 165 119 93 30 357 227 ..	(dd) (dd) (dd) ..	(dd) (dd) (dd) ..	20,595 15,568 14,325
Order XXIV (part)	Miscellaneous Services																						
286, 287 and 299(6) (part)	Laundry, Cleaning, Job Dyeing and Carpet Beating (m)	1950 1949 1948 1935	2,220 2,211 2,106 ..	71,337 69,013 63,864 ..	16,763 15,486 12,893 ..	1,844 1,677 1,368 ..	52,730 51,850 49,603 ..	310 303 302 ..	152,491 153,499 147,853 ..	29,694 28,779 26,317 ..	5,779 5,321 4,838	3,692 3,599 3,052 ..	+ 424 + 100 + 443 2,663 2,850 891 767 499 618 4,053 4,235 ..	1,093 1,169 884 ..	5,206 5,519 4,499 ..	176,660 177,998 171,940
TOTAL - ALL TRADES		1950 1949 1949 1948 1935	13,309,368 11,752,106 13,667,785 12,395,840 3,542,653	7,805,594 6,698,845 7,864,853 6,881,533 1,817,397	262,992 234,519 245,364 214,791 23,859	5,003,212 4,548,121 5,309,490 5,038,111 1,640,176	607 563 545 540 225	8,233,035 8,069,668 8,244,931 7,938,192 6,461,903	2,848,377 2,677,995 2,547,257 2,367,827 ..	667,415 601,304	51,628 .. 194,068 171,445 ..	259,198 .. 748,428 671,406 ..	8,534,545 .. 10,572,978 10,160,807	

LARGER										ESTABLISHMENTS				SMALL FIRMS	ALL FIRMS (b)								
Standard Industrial Classification minimum list heading	Trade and year		Estab-lish-ments	Value of produc-tion (gross output)	Cost of purchased materials and fuel used	Payment for work given out	Net output		Number employed (c) (e)		Investment				Number of firms	Employ-ment (d)	Estimated employ-ment (c) (d)						
							value	per person employed (c) (d)	operatives	other workers	at beginning of year	change during year	at beginning of year	change during year				in new plant and machinery	in new vehicles	in new build-ings (f)	total		
(1)	1950 } United Kingdom 1949 } 1948 } Great Britain 1935 } United Kingdom	(3)	(4)	(5)	(6)	(7)	(8)	(9)	(10)	(11)	(12)	(13)	(14)	(15)	(16)	(17)	(18)	(19)	(20)	(21)	(22)	(23)	
ESTABLISHMENTS																							
											operatives	other workers	at beginning of year	change during year	at beginning of year	change during year	in new plant and machinery	in new vehicles	in new build-ings (f)	total	Number of firms	Employ-ment (d)	Estimated employ-ment (c) (d)
											(11)	(12)	(13)	(14)	(15)	(16)	(17)	(18)	(19)	(20)	(21)	(22)	(23)
											£'000	£'000	£'000	£'000	£'000	£'000	£'000	£'000	£'000	£'000	No.	No.	No.
										
											3,627	1,376	3,709(cc)	+ 892(cc)	286	194	129	609	1,050	5,540	21,005
										
											1,141	1,059	1,333	+ 388	4,288	+1,403	192	45	37	274	204	957	8,163
											1,076	992	1,118	+ 88	4,214	+ 209	128	33	26	187	154	620	8,130
										
											11,899	6,553	49,620	+8,326	15,365	+3,050	(dd)	(dd)	20,595
											1,575	5,792	34,308	+7,422	16,185	+ 698	99	165	93	357	(dd)	(dd)	15,568
											1,257	..	21,437	+6,033	16,001	+5,998	78	119	30	227	(dd)	(dd)	14,325
										
											29,694	5,779	3,692	+ 424	1,093	5,206	176,660
											28,779	5,321	3,599	+ 100	2,663	891	499	4,053	1,169	5,519	177,998
											26,317	4,838	3,052	+ 443	2,850	767	618	4,235	884	4,499	171,940
										
											2,848,377	667,415	51,628	259,198	8,534,545
											2,677,995	601,304
											2,547,257	194,068	748,428	10,572,978
											2,367,827	171,445	671,406	10,160,807
										

(For the footnotes to the table, see next page.)

(a) Northern Ireland did not take a census in respect of 1948, and, for 1950, did not collect any particulars of small firms. For larger establishments, the figures shown for 1950, 1949 and 1935 relate to the United Kingdom and those for 1948 to Great Britain only; for small firms the 1948 and 1935 figures relate to the United Kingdom and those for 1950 and 1948 to Great Britain only.

In 1949, the proportions of the net output figures of larger establishments in the United Kingdom accounted for by those in Northern Ireland are:- about 5 per cent. of the total for Order X, about 3 per cent. for Order XII, between 1½ and 2 per cent. for each of the Orders VI, XIII and XVIII, between 1 and 1½ per cent. for Orders XIV and XVII, between ½ and 1 per cent. for Orders III, VII, IX, XI and XV, and for less than ½ per cent. for each of the other orders, excluding Orders XX and XXIV. The proportion in the Tea Blending and Coffee Roasting Trade (Order XX) was about 1 per cent. and that in the Laundry, Cleaning, Job Dyeing and Carpet Beating Trade (Order XXIV), about 1½ per cent.; no particulars for Northern Ireland are included in the figures for the Textile Converting Trade in Order XX.

The more significant corresponding proportions for individual trades are as follows:-

Trade	Percentage	Trade	Percentage	Trade	Percentage
Order III		Order X		Order XIII	
Roofing Felts	7.5	Flax Processing	20.5	Grain Milling	6.0
Order IV		Linen and Soft Hemp	81.5	Bread and Flour Confectionery	4.0
Fertiliser, Disinfectant, Insecticide, etc.	3.5	Rope, Twine and Net	10.0	Bacon Curing and Sausage	3.5
Match	5.0	Made-up Household Textiles	23.0	Preserved Meat	11.0
Order VI		Textile Finishing	5.5	Milk Products	3.5
Textile Machinery and Accessories	6.0	Order XII			
Order VII		Tailoring, Dressmaking, etc.	4.0		
Motor Vehicles and Cycles (Repairing)	4.0				

(b) Including those not making satisfactory returns.

(c) Excluding outworkers.

(d) Including working proprietors.

(e) For operatives, average number employed in the year; for other workers, average number (1950 and 1949), number at September 25 (1948) or number at October 12 (1935). Working proprietors are included (in the figures for other workers) for 1935, but excluded for the other years.

(f) Excluding site value.

(g) In these trades certain special payments or receipts were recorded as shown below and were taken into account in arriving at net output. The sums indicated by asterisks have been treated as noted in the 'Remarks' column.

Trade	Payments made by the trade			Payments made to the trade			Remarks
	1950 £'000	1949 £'000	1948 £'000	1950 £'000	1949 £'000	1948 £'000	
Brick and Fireclay	-	3	82	-	-	-	Brick levy payable to the Ministry of Works; this levy ceased to be payable on March 31, 1949.
Dyes and Dyestuffs	-	-	-	8*	3*	2*	Customs and Excise drawback in respect of goods exported: excluded from the figures for cost of materials and fuel used.
Fertiliser, Disinfectant, Insecticide and Allied Trades	-	-	-	813*	843*	716*	Government refund in respect of sulphuric acid purchased by establishments in Great Britain: excluded from the figures for cost of materials and fuel used. Similar information was not obtained for Northern Ireland and no deduction has been made.
Chemicals (General)	1,433	1,425	1,207	497*	439*	2,361*	General Charges Allowance. Government Early Delivery Rebate. Government Compound Rebate. Levies.
Drugs and Pharmaceutical Preparations	-	2,446	2,642	-	6,578*	5,145*	Customs and Excise rebate and drawback in respect of alcohol: excluded from the figures for cost of materials and fuel used.
Toilet Preparations and Perfumery	-	-	-	-	69*	-	Excise duty on saccharin.
Match	7,682	7,177	4,848	-	-	-	Customs and Excise rebate: excluded from the figure for cost of materials and fuel used.
Mineral Oil Refining	336*	492*	341*	-	-	-	Excise duty (net). Customs and Excise duty: included in the figures for cost of materials and fuel used.
Aircraft Manufacture and Repair	-	-	-	130	280	2,676	Receipts from Government Departments.
Hardware, Hollow-ware, Metal Furniture and Sheet Metal	392	334	208	-	-	-	Excise duty on mechanical lighters.

(g) (Contd.)

Trade	Payments made by the trade			Payments made to the trade			Remarks
	1950 £'000	1949 £'000	1948 £'000	1950 £'000	1949 £'000	1948 £'000	
Brass Manufactures	-	-	9	-	-	-	Excise duty.
Jewellery and Plate	3	4	1	-	-	-	Excise duty.
Woollen and Worsted	-	-	-	-	63	1,149	Manufacturers' 7½ per cent. subsidy.
Made-up Household Textiles	-	-	-	-	38	208	Cotton subsidy.
Grain Milling	-	-	-	64,733*	76,732*	60,000*	Cotton utility cloth subsidy. Rebates and allowances (for 1948, estimated amount) received from the Ministry of Food: excluded from the figures for cost of materials and fuel used.
Bread and Flour Confectionery	-	-	-	5,843	5,484	-	Bread subsidy payable by the Ministry of Food in respect of flour converted into bread.
Biscuit	3,472	2,955	2,883	6	3	6	Payable to the Ministry of Food under the Biscuits (Charges) Orders in respect of flour used for biscuits.
Wholesale Slaughtering	-	-	-	13,616	24,261	41,804	Bread subsidy.
Bacon Curing and Sausage	-	-	-	23,221	14,452	4,544	Payable under the Biscuits (Charges) Orders. Subsidy.
Milk Products	-	-	-	7,800	24,692	21,889	Net amount payable by the Ministry of Food in respect of equalisation payments and transport allowances.
Sugar and Glucose	6,833	8,150	793	220	1,635	-	Net amount payable to or by the Bacon Curers' (Wartime) Association Ltd. in respect of payments for throughput.
Cocoa, Chocolate and Sugar Confectionery	8,758	18,160	31,183	-	-	-	Milk subsidy.
Brewing and Malting	251,519	275,069	289,979	-	-	-	Transport subsidy.
Wholesale Bottling	28,268*	29,868*	-	-	-	-	Ministry of Food cost - adjustments, balancing payments and deficiency payments.
Spirit Rectifying and Compounding	30,370*	25,988*	27,317*	-	-	-	Customs and Excise duty (net).
Soft Drinks, British Wines and Cider	2,723	2,771	3,716	-	-	-	Customs and Excise duty (net).
Tobacco	613,144*	606,874*	568,942*	-	-	-	Customs and Excise duty (net): included in the figures for cost of materials and fuel used.
Newspaper and Periodical Printing and Publishing, Bookbinding, Engraving, etc.	-	-	3,674*	-	-	-	Authors' royalties, copyright payments, payments to contributors, and editorial, artists' and readers' fees, less payments received from authors. The particulars were not recorded separately for 1950 or 1949. Net payments included, for each year, in the figures for payment for work given out.
Cinematograph Film Production	438	808	765	-	-	-	Cost of films made abroad.
Tea Blending and Coffee Roasting	-	-	-	-	106	92	Hire of studios, equipment and other facilities.
Textile Converting	-	-	-	-	-	1,197	Royalties and copyright payments. Drawback of duty in respect of tea, coffee, etc. exported. Cotton utility cloth subsidy.

(h) The figures for 1950 relating to larger establishments in Great Britain cover certain sections of the trade only; the excluded sections are:- Drugs and Pharmaceutical Preparations Trade - establishments mainly engaged in the manufacture of pharmaceutical preparations; Tailoring, Dressmaking, etc. Trade - retail bespoke tailors and dressmakers, and work-rooms of retail drapers, etc.; and Milk Products Trade - establishments mainly engaged in the sterilising, cooling and bottling of whole milk. The Northern Ireland figures included cover the whole of these trades. Figures for 1949 comparable with those shown for 1950 are given in italics.

(i) The net output figures are exclusive of Excise duties estimated as follows:- Drugs and Pharmaceutical Preparations Trade, £740,000 (not including Excise duty on saccharin, the amount of which has been omitted from the figure for gross output); Match Trade, £2,110,000; Rayon, Nylon, etc. and Silk Trade, £2,091,000; Sugar and Glucose Trade, £2,500,000 (subsidy amounting to £2,219,000 is included in the net output for this trade); Brewing and Malting Trade, £55,300,000; and Soft Drinks, British Wines and Cider Trade, £700,000.

(j) Figures of stocks of finished products and work in progress were not collected for the Shipbuilding and Ship Repairing Trade, the Motor Vehicles and Cycles (Repairing) Trade (for 1949 and 1948) and the Cinematograph Film Production Trade, and are, therefore, not included in the relative Order totals or in the total for manufacturing trades.

(k) Excluding stocks held by motor vehicle repairing establishments of tramway, trolley bus and omnibus undertakings.

- (l) Excluding railway establishments. Estimated particulars relating to these establishments are, however, included in the other figures shown for 1935 (see footnote (n)). The numbers of railway establishments in 1948 covered by the Railway Locomotive Shops and Locomotive Manufacturing Trade and the Railway Carriages and Wagons and Trams Trade were 355 and 404, respectively.
- (m) The following trades, or sections of trades, were not covered by the 1935 Census:- Order X - Flax Processing, and Made-up Household Textiles; Order XIII - Wholesale Slaughtering; Order XV - Non-printing Newspaper, Book, etc. Publishers; Order XVI - Cinematograph Film Production; Order XX - Scrap Metal, Tea Blending and Coffee Roasting, and Textile Converting; and Order XXIV - Laundry, Cleaning, Job Dyeing, and Carpet Beating. The Scrap Metal Trade was also not covered by the 1949 Census.
- (n) For the 1935 Census, railway companies were not required to furnish separate detailed returns on an establishment basis and, accordingly, it is not possible to reclassify their establishments in that year strictly in accordance with the Standard Industrial Classification. From the information available, however, rough estimates covering the main productive activities of the companies have been made and included in the figures given for the Railway Locomotive Shops and Locomotive Manufacturing Trade, the Railway Carriages and Wagons and Trams Trade and the Railways (Civil Engineering) Trade. The particulars relating to all other manufacturing establishments, shown in the table as 'Unclassified', cover work appropriate to a number of trades (railway establishments are included in a total of 15 trades for 1948). The omission of railway establishments from these trades is most significant in the case of the Canvas Goods and Sacks Trade; it is estimated that the 1935 net output and employment figures shown for that trade are each deficient on this account by about 10 per cent.
- (o) Including shop assistants. The numbers of shop assistants employed were 13,267 in 1949 and 12,041 in 1948, their remuneration being £2,202,000 and £1,845,000, respectively.
- (p) The Wholesale Slaughtering Trade covers all abattoirs and slaughterhouses controlled by the Ministry of Food. No operatives are directly employed by the Ministry; killing being done on their behalf by contractors. The trade was not included in the Northern Ireland Censuses for 1950 and 1949.
- (q) Excise duty on playing cards is excluded from the figures for gross output.
- (r) Including artistes other than crowd artistes.
- (s) Gross output for 1950, excludes all colliery consumption of coal, while for 1949 and 1948, it excludes the value of coal produced and consumed at the same colliery, amounting to £16,728,000 and £17,524,000 in the respective years; for the three years, coal provided free or at concessionary prices is valued in gross output at the amount actually received (including charges for delivery in the case of National Coal Board establishments) - the amounts received were £1,376,000 for 1950, £1,294,000 for 1949 and £1,345,000 for 1948, the corresponding pithead market values being £12,245,000, £11,665,000 and £12,109,000. For 1935, however, coal consumed at the colliery and free and concessionary coal were treated as sales and the value estimated at average pithead market prices; the amount actually received for free and concessionary coal in 1935 was £767,000.
- (t) Number of mines or, for the nationalised sector of the trade since 1948, number of colliery units recognised by the National Coal Board for administrative and accounting purposes; in some cases these units comprise more than one mine.
- (u) Number of private firms and number of Government establishments.
- (v) Including amounts paid for hired haulage, for the hire of plant and machinery and, in the case of the Building and Contracting Trade, for work sub-contracted.
- (w) The figures shown for larger establishments for 1950 and 1949 relate to all gas works, regardless of size, of the Area Gas Boards together with the larger non-nationalized undertakings.
- (x) The gross output figures for 1950, 1949 and 1948 include rents received for meters and appliances, net receipts from the sale of appliances and the value of new constructional work carried out by employees of the undertakings. For 1935, receipts from rents and the sale of appliances were not ascertained, and work of new construction carried out by employees of gas undertakings was not separately distinguished from work of repair and maintenance. In addition, sales of by- and waste products by electricity undertakings were not recorded for 1935. The gross output figures for 1948 calculated on the same basis as those for 1935 are £164,999,000 for the Gas Supply Industry and £235,415,000 for the Electricity Supply Industry.
- (y) Coke, coke breeze and other by-products.
- (z) Including meters, mains and services, and new issues of appliances for hire. The figures for the Gas Supply Industry also include amounts of £3,097,000 for 1949 and £5,084,000 for 1948 returned as 'plant and machinery (including buildings)'.
- (aa) Number of generating stations only.
- (bb) Number of undertakings.
- (cc) Scrap metal and other goods, and materials and fuel.
- (dd) The figures shown for larger establishments relate to all firms, regardless of size. The employment figures for 1950 relate to the total number of persons employed, including those not engaged in production, in the week ended June 24, 1950, while the figures for 1949 and 1948 represent the numbers (see note (e)) employed in production only. For this reason a figure for net output per person employed in 1950, comparable with the figures for the earlier years, cannot be given.

Analysis by size: Larger establishments (a)

Part I: Manufacturing trades Orders III - XVI

TABLE 2

Size of establishment (average number employed) (1)	Establishments (2)	Gross output (3)	Net output (4)	Number employed (b) (c)				Wages and salaries (c)			Net output per person employed (c) (12)	Size of establishment (average number employed) (13)		
				operatives (5)	other workers (6)	working proprietors (7)	total (8)	operatives (9)	other workers (10)	total (11)				
	No.	£'000	£'000	No.	No.	No.	No.	£'000	£'000	£'000	£			
11-24	1949	17,371	401,363	156,245	245,515	48,005	5,838	299,358	67,271	20,986	88,257	522	1949	11-24
	1948	16,451	371,384	153,370	234,013	44,411	5,135	283,559	61,306	18,897	80,203	541	1948	
25-49	1949	15,436	769,139	288,880	451,649	84,967	3,775	540,391	122,206	39,413	161,619	535	1949	25-49
	1948	14,593	696,556	280,762	427,777	79,405	3,279	510,461	111,704	35,253	146,957	550	1948	
50-99	1949	10,707	1,113,968	407,340	636,251	110,754	1,573	748,578	171,794	54,068	225,862	544	1949	50-99
	1948	10,316	1,036,444	405,673	615,813	105,960	1,153	722,926	159,849	49,962	209,811	561	1948	
100-199	1949	6,899	1,465,049	535,153	822,237	142,133	603	964,973	226,483	69,055	295,539	555	1949	100-199
	1948	6,604	1,377,236	531,271	791,822	134,396	325	926,543	210,502	62,588	273,091	573	1948	
200-299	1949	2,651	1,014,799	359,979	549,589	94,908	202	644,699	151,301	45,490	196,791	558	1949	200-299
	1948	2,488	924,643	338,819	515,931	88,110	53	604,094	137,394	40,760	178,154	561	1948	
300-399	1949	1,346	793,701	263,437	394,852	69,336	95	464,283	111,105	32,706	143,812	567	1949	300-399
	1948	1,229	680,677	245,581	357,893	66,170	10	424,073	97,830	30,268	128,097	579	1948	
400-499	1949	777	531,891	196,096	292,149	55,285	43	347,477	85,097	25,031	110,128	564	1949	400-499
	1948	721	469,810	180,342	270,954	50,210	9	321,173	75,939	22,067	98,006	562	1948	
500-749	1949	1,001	913,742	343,331	510,924	101,187	40	612,151	149,939	46,436	196,375	561	1949	500-749
	1948	971	845,960	330,434	491,348	98,172	1	589,521	140,542	43,279	183,822	561	1948	
750-999	1949	417	623,760	209,463	292,544	66,774	21	359,339	88,290	30,239	118,529	583	1949	750-999
	1948	403	548,345	199,807	284,414	64,485	3	348,902	83,057	28,068	111,125	573	1948	
1,000-1,499	1949	365	678,754	262,558	354,959	86,907	16	441,882	112,749	38,990	151,738	594	1949	1,000-1,499
	1948	357	612,731	246,710	352,413	83,418	-	435,831	107,597	36,215	143,812	566	1948	
1,500-1,999	1949	185	522,390	191,705	261,100	58,745	10	319,855	84,828	26,576	111,404	599	1949	1,500-1,999
	1948	183	483,973	183,968	261,226	59,267	-	320,493	81,812	25,556	107,369	574	1948	
2,000-2,499	1949	112	486,692	146,515	201,581	46,156	-	247,737	67,613	20,798	88,411	591	1949	2,000-2,499
	1948	84	410,449	114,928	149,612	35,856	-	185,468	47,029	15,304	62,333	620	1948	
2,500-2,999	1949	74	447,504	125,733	164,243	37,514	1	201,758	57,812	16,266	74,078	623	1949	2,500-2,999
	1948	82	372,391	123,530	181,449	39,605	-	221,054	61,367	16,644	78,011	559	1948	
3,000-3,999	1949	61	344,285	119,183	168,651	39,740	11	208,402	58,799	19,560	78,359	572	1949	3,000-3,999
	1948	59	260,480	107,330	168,775	35,025	-	203,800	58,316	14,225	72,541	527	1948	
4,000-4,999	1949	31	278,415	75,127	102,623	27,339	-	129,962	36,866	11,764	48,630	578	1949	4,000-4,999
	1948	26	301,253	62,897	93,812	23,625	-	117,437	30,957	9,900	40,857	536	1948	
5,000-7,499	1949	32	245,520	107,636	151,152	40,204	2	191,358	53,800	16,779	70,579	562	1949	5,000-7,499
	1948	34	251,219	110,768	165,408	39,274	-	204,682	55,719	16,365	72,083	541	1948	
7,500-9,999	1949	19	170,445	80,358	120,680	28,764	-	149,444	41,090	12,737	53,828	538	1949	7,500-9,999
	1948	13	114,203	57,142	90,285	22,866	-	113,151	28,459	9,171	37,630	505	1948	
10,000 and over	1949	12	237,272	98,448	152,000	38,620	-	190,620	56,233	17,760	73,993	516	1949	10,000 and over
	1948	11	202,813	95,858	145,803	34,966	-	180,769	51,505	15,885	67,390	530	1948	
Unclassified (d)	1949	598	105,298	881	-	1,007	-	1,007	-	384	384	875	1949	Unclassified (d)
	1948	615	68,620	827	-	1,033	-	1,033	-	382	382	801	1948	
Total - manufacturing trades	1949	58,094	11,143,985	3,968,068	5,872,699	1,178,345	12,230	7,063,274	1,743,276	545,040	2,288,316	562	1949	Total - manufacturing trades
	1948	55,240	10,029,188	3,770,017	5,598,748	1,106,254	9,968	6,714,970	1,600,886	490,790	2,091,676	561	1948	

DS 8064/1

33

TABLE 2 (continued) Part II: Non-manufacturing trades (continued) (Orders II, XVII, XVIII, XX (part), XXIV (part))

Size of establishment (average number employed) (1)	Establishments (2)	Gross output (3)	Net output (4)	Number employed (b) (c)				Wages and salaries (c)			Net output per person employed (12)	Size of establishment (average number employed) (13)		
				operatives (5)	other workers (6)	working proprietors (7)	total (8)	operatives (9)	other workers (10)	total (11)				
	No.	£'000	£'000	No.	No.	No.	No.	£'000	£'000	£'000	£			
Mining and Quarrying (other than coal) (e)														
(Order II (part))														
11-24	1949	612	8.912	6.570	9.121	1.344	194	10,659	2,888	550	3,438	616	1949	11-24
25-49	1949	412	12.354	8.696	12.661	1.556	104	14,321	4,112	691	4,803	607	1949	25-49
Total 11-49	1949	1,024	21,266	15,266	21,782	2,900	298	24,980	7,000	1,242	8,242	611	1949	Total 11-49
	1948	861	18,485	13,962	18,461	2,568	126	21,155	5,848	1,029	6,876	660	1948	
50-99	1949	186	11,224	7,676	11,427	1,355	25	12,807	3,905	627	4,532	599	1949	50-99
	1948	189	11,218	8,269	11,503	1,394	7	12,904	3,732	628	4,360	641	1948	
100-199	1949	75	9,631	6,499	9,309	1,056	-	10,365	3,172	484	3,656	627	1949	100-199
	1948	78	9,320	6,364	9,679	1,010	-	10,689	3,221	464	3,685	595	1948	
200-299	1949	22	6,075	2,793	4,754	420	-	5,174	1,555	223	1,778	540	1949	200-299
300-399	1949	15	4,670	2,890	4,668	674	-	5,342	1,571	354	1,925	541	1949	300-399
Total 200-399	1949	37	10,745	5,683	9,422	1,094	-	10,516	3,126	577	3,703	540	1949	Total 200-399
	1948	37	9,505	5,150	9,190	909	-	10,099	2,900	475	3,375	510	1948	
400-499	1948	5	1,685	1,235	1,959	283	-	2,242	661	118	778	551	1948	400-499
500-999	1948	3	2,890	1,643	1,673	458	-	2,131	512	230	742	771	1948	500-999
Total 400-999	1949	7	4,455	2,706	3,449	608	-	4,057	1,119	336	1,455	667	1949	Total 400-999
	1948	8	4,575	2,878	3,632	741	-	4,373	1,173	348	1,520	658	1948	
1,000-1,999	1949	3	2,224	1,642	3,810	358	1	4,169	1,176	177	1,353	394	1949	1,000-1,999
	1948	3	2,237	1,692	3,848	370	1	4,219	1,164	175	1,339	401	1948	
Total - Order II (part)	1949	1,332	59,546	39,473	59,199	7,371	324	66,894	19,498	3,443	22,941	590	1949	Total - Order II (part)
	1948	1,176	55,341	38,316	56,313	6,992	134	63,439	18,037	3,119	21,156	604	1948	
Building and Contracting (f)														
(Order XVII)														
11-24	1949	7,479	101,280	52,866	113,650	12,565	5,973	132,188	34,977	3,954	38,931	400	1949	11-24
25-49	1949	5,032	139,623	69,902	154,581	15,910	3,173	173,664	48,401	5,921	54,322	403	1949	25-49
Total 11-49	1949	12,511	240,904	122,768	268,231	28,475	9,146	305,852	83,378	9,875	93,253	401	1949	Total 11-49
	1948	12,825	220,181	116,229	264,206	27,173	9,619	300,998	77,603	8,796	86,398	386	1948	
50-99	1949	2,594	149,610	72,413	160,578	15,733	1,130	177,441	51,418	6,475	57,893	408	1949	50-99
100-199	1949	1,133	133,021	64,396	141,254	13,838	288	155,380	45,905	5,947	51,852	414	1949	100-199
Total 50-199	1949	3,727	282,631	136,809	301,832	29,571	1,418	332,821	97,323	12,422	109,745	411	1949	Total 50-199
	1948	3,566	257,822	129,237	295,312	27,972	1,188	324,472	90,379	10,836	101,215	398	1948	
200-299	1949	365	79,333	36,843	81,101	8,000	61	89,162	26,400	3,436	29,836	413	1949	200-299
	1948	329	65,937	31,942	72,874	6,806	50	79,730	22,923	2,806	25,729	401	1948	
300-399	1949	179	55,002	26,140	55,282	6,207	25	61,514	17,957	2,803	20,760	425	1949	300-399
	1948	178	52,346	25,527	55,650	5,776	4	61,430	17,428	2,496	19,923	416	1948	
400-499	1949	106	43,495	20,418	42,610	4,995	4	47,609	13,992	2,182	16,174	429	1949	400-499
	1948	119	45,090	22,010	47,976	5,498	11	53,485	15,270	2,341	17,612	412	1948	
500-749	1949	150	76,153	38,441	81,171	9,320	7	90,498	26,451	4,128	30,580	425	1949	500-749
750-999	1949	49	38,483	17,698	38,114	4,160	2	42,276	12,631	1,832	14,463	419	1949	750-999
Total 500-999	1949	199	114,635	56,139	119,285	13,480	9	132,774	39,082	5,960	45,042	423	1949	Total 500-999
	1948	175	92,631	46,100	105,455	11,421	3	116,879	32,458	4,949	37,407	394	1948	
1,000-1,499	1949	70	60,573	33,203	77,694	7,560	1	85,255	24,674	3,480	28,154	390	1949	1,000-1,499
	1948	78	70,142	37,534	86,341	8,421	-	94,762	27,266	3,608	30,874	396	1948	
1,500-1,999	1949	41	56,387	28,954	63,428	6,772	4	70,204	21,090	3,171	24,261	412	1949	1,500-1,999
	1948	45	60,140	31,542	71,614	6,591	1	78,206	23,344	3,108	26,452	403	1948	
2,000-2,499	1949	27	50,940	25,885	52,759	5,861	-	58,620	18,562	2,729	21,291	442	1949	2,000-2,499
	1948	15	23,903	12,700	29,366	3,508	-	32,874	9,539	1,508	11,047	386	1948	
2,500-2,999	1949	3	6,981	3,327	7,838	637	-	8,475	2,444	300	2,744	393	1949	2,500-2,999
	1948	9	18,418	9,249	21,152	2,448	-	23,600	7,019	944	7,963	392	1948	
3,000-3,999	1949	8	29,149	12,153	24,834	3,306	-	28,140	8,868	1,247	10,115	432	1949	3,000-3,999
	1948	9	28,311	13,759	29,609	3,169	-	32,778	9,844	1,368	11,212	420	1948	
4,000-4,999	1949	4	15,519	7,552	15,225	1,788	-	17,013	5,440	801	6,241	444	1949	4,000-4,999
	1948	4	14,045	6,906	15,661	1,507	-	17,168	5,288	689	5,976	402	1948	
5,000-7,499	1949	7	37,894	19,968	35,919	4,451	-	40,370	12,706	2,148	14,854	495	1949	5,000-7,499
7,500 and over	1949	3	31,589	16,767	25,680	4,097	-	29,777	8,929	1,490	10,419	563	1949	7,500 and over
Total 5,000 and over	1949	10	69,483	36,735	61,599	8,548	-	70,147	21,635	3,637	25,273	524	1949	Total 5,000 and over
	1948	8	53,681	28,688	51,581	7,212	8	58,801	17,322	2,776	20,098	488	1948	
Total - Order XVII	1949	17,250	1,105,030	546,925	1,171,718	125,200	10,668	1,307,586	380,845	52,044	432,889	418	1949	Total - Order XVII
	1948	17,360	1,002,647	511,423	1,146,797	117,502	10,884	1,275,183	355,682	46,225	401,907	401	1948	
Other trades (g)														
(Orders II (part), XVIII, XX (part), XXIV (part))														
Total - other trades (g)	1949	..	1,359,224	755,025	1,141,315	154,490	1,144	1,296,949	403,636	66,887	470,525	582	1949	Total - other trades (g)
	1948	..	1,308,664	718,354	1,136,334	143,866	1,224	1,281,424	393,221	61,171	454,392	561	1948	
Total - non-manufacturing trades	1949	..	2,523,800	1,341,422	2,372,232	287,061	12,136	2,671,429	803,981	122,374	926,355	502	1949	Total - non-manufacturing trades
	1948	..	2,366,652	1,268,093	2,339,444	268,360	12,242	2,620,046	766,941	110,515	877,456	484	1948	

(a) The figures for 1949 relate to the United Kingdom, those for 1948 to Great Britain only. Particulars of employment in small firms and of total employment in all firms, including estimates in respect of firms not making satisfactory returns, are as follows:-

	Number of small firms	Number employed in small firms	Estimated number employed in all firms
Manufacturing trades			
1949 (United Kingdom)	79,138	368,027	7,467,152
1949 (Great Britain)	76,826	359,096	7,291,371
1948 (Great Britain)	73,961	349,649	7,143,947
Non-manufacturing trades			
1949 (United Kingdom)	114,930	380,401	3,105,826
1949 (Great Britain)	113,664	374,651	3,062,323
1948 (Great Britain)	97,484	321,757	3,016,860

- (b) Average number for operatives; average number (1949) or number at September 25 (1948) for other workers.
(c) Excluding outworkers.
(d) These particulars relate to the Wholesale Slaughtering Trade and cover all abattoirs and slaughterhouses controlled by the Ministry of Food. No operatives are directly employed by the Ministry, killing being done on their behalf by contractors.
(e) Owing to the absence of sufficient information coal mines cannot be included in the analysis.
(f) For private firms in Great Britain in the Building and Contracting Trade the analysis is on the basis of firms, not establishments.
(g) Coal Mines; Gas and Electricity Supply Industries; Water Undertakings; Scrap Metal Trade (1948 only); Textile Converting Trade; Tea Blending and Coffee Roasting Trade; and Laundry, Cleaning, Job Dyeing and Carpet Beating Trade. No satisfactory analysis by size of establishment is available for these trades.

CENSUSES OF PRODUCTION FOR 1950, 1949 AND 1948.
Analysis by standard region and country: Larger establishments (a)

TABLE 3 (continued)

Part I: Manufacturing trades Orders III - XVI

Region (1)	Establishments (2)	Gross output (3)	Net output (4)	Number employed (b) (c)				Wages and salaries (c)			Net output per person employed (c) (12)	Region (13)	
				operatives (5)	other workers (6)	working proprietors (7)	total (8)	operatives (9)	other workers (10)	total (11)			
	No.	£'000	£'000	No.	No.	No.	No.	£'000	£'000	£'000	£		
England													
Northern	1949	2,169	559,936	193,609	303,247	54,899	325	358,471	93,894	23,573	117,467	540	1949 Northern
	1948	2,114	505,026	183,287	299,230	52,732	329	352,291	89,556	21,422	110,978	520	1948 Northern
East and West													East and West
Ridings of	1949	6,618	1,166,782	423,490	639,083	104,335	1,282	744,700	180,841	50,879	231,720	569	1949 Ridings of
Yorkshire	1948	6,445	1,042,046	408,933	615,941	99,536	1,278	716,755	165,587	46,085	211,672	571	1948 Yorkshire
North Midland	1949	4,558	959,997	303,120	455,191	82,478	822	538,491	131,346	37,259	168,605	563	1949 North Midland
	1948	4,407	876,155	283,095	437,464	77,886	806	516,156	118,209	33,818	152,027	548	1948 North Midland
Eastern	1949	2,450	466,757	178,014	239,377	61,060	441	300,878	72,666	27,210	99,876	592	1949 Eastern
	1948	2,344	431,597	172,953	231,042	57,840	408	289,290	67,067	24,650	91,717	598	1948 Eastern
London and South													London and South
Eastern	1949	13,469	2,090,769	799,458	1,020,173	271,516	2,613	1,294,302	322,752	134,898	457,650	618	1949 Eastern
	1948	13,044	1,953,856	775,292	997,937	256,851	2,423	1,257,211	302,542	122,532	425,074	617	1948 Eastern
Southern	1949	1,915	310,852	127,942	175,799	41,226	301	217,326	56,337	20,365	76,703	589	1949 Southern
	1948	1,829	279,726	123,063	175,295	39,666	296	215,257	54,045	18,514	72,560	572	1948 Southern
South Western	1949	2,363	554,238	144,864	214,874	50,354	338	265,566	62,276	22,195	84,470	545	1949 South Western
	1948	2,323	531,423	144,218	215,314	48,751	337	264,402	60,227	20,914	81,141	545	1948 South Western
Midland	1949	6,785	1,312,137	526,588	795,012	159,699	1,147	955,858	250,209	71,417	321,626	551	1949 Midland
	1948	6,571	1,222,458	518,340	783,057	153,081	1,132	937,270	234,560	65,641	300,202	553	1948 Midland
North Western	1949	8,905	1,941,962	685,097	1,064,375	185,454	1,325	1,251,154	299,242	86,684	385,926	548	1949 North Western
	1948	8,735	1,793,553	665,866	1,044,544	179,634	1,328	1,225,506	281,720	78,985	360,706	543	1948 North Western
Unclassified (d)	1949	459	122,671	33,359	50,955	12,419	-	63,374	17,831	5,405	23,237	526	1949 Unclassified (d)
	1948	467	89,738	29,002	48,501	10,425	-	58,926	16,315	4,982	21,298	492	1948 Unclassified (d)
Total - England	1950	45,964	10,118,050	3,612,301	4,852,493	1,005,963	7,146	5,865,602	1,519,008	497,228	2,016,236	616	1950 Total - England
	1949	45,833	8,878,368	3,248,383	4,745,105	967,256	7,959	5,720,320	1,426,395	458,376	1,884,772	568	1949 Total - England
	1949	49,691	9,486,101	3,415,540	4,958,086	1,023,440	8,594	5,990,120	1,487,393	479,886	1,967,279	570	1949 Total - England
	1948	48,279	8,725,578	3,304,049	4,848,325	976,402	8,337	5,833,064	1,389,828	437,543	1,827,374	566	1948 Total - England
Wales													
	1950	1,570	481,143	147,054	196,528	35,621	149	232,298	65,517	15,889	81,406	633	1950 Wales
	1949	1,549	412,417	133,744	188,858	33,207	168	222,233	60,592	14,568	75,160	602	1949 Wales
	1949	1,722	437,492	138,704	196,406	34,818	194	231,418	62,706	15,171	77,876	599	1949 Wales
	1948	1,638	372,179	120,846	187,166	31,706	153	219,025	58,582	13,290	71,872	552	1948 Wales
Scotland													
	1950	4,770	987,447	348,637	537,191	96,223	1,149	634,563	157,490	43,256	200,746	549	1950 Scotland
	1949	4,695	884,578	313,989	529,534	92,178	1,256	622,968	149,908	40,053	189,961	504	1949 Scotland
	1949	5,472	996,960	347,181	571,239	102,149	1,498	674,886	161,037	43,434	204,472	514	1949 Scotland
	1948	5,323	931,429	345,123	563,257	98,146	1,478	662,881	152,475	39,955	192,430	521	1948 Scotland
Great Britain													
	1950	52,304	11,586,641	4,107,992	5,586,212	1,137,807	8,444	6,732,463	1,742,016	556,373	2,298,389	610	1950 Great Britain
	1949	52,077	10,175,363	3,696,117	5,463,497	1,092,641	9,383	6,565,521	1,636,895	512,998	2,149,893	563	1949 Great Britain
	1949	56,885	10,920,553	3,901,427	5,725,731	1,160,407	10,286	6,896,424	1,711,137	538,490	2,249,627	566	1949 Great Britain
	1948	55,240	10,029,188	3,770,017	5,598,748	1,106,254	9,968	6,714,970	1,600,886	490,790	2,091,676	561	1948 Great Britain
Northern Ireland													
	1950	1,128	239,995	70,803	145,251	17,210	1,903	164,364	32,901	6,656	39,557	431	1950 Northern Ireland
	1949	1,127	214,249	63,224	141,326	16,960	1,820	160,106	30,534	6,304	36,839	395	1949 Northern Ireland
	1949	1,209	223,432	66,641	146,968	17,938	1,944	166,850	32,139	6,550	38,690	399	1949 Northern Ireland
United Kingdom													
	1950	53,432	11,826,637	4,178,796	5,731,463	1,155,017	10,347	6,896,827	1,774,918	563,028	2,337,946	606	1950 United Kingdom
	1949	53,204	10,389,611	3,759,342	5,604,823	1,109,601	11,203	6,725,627	1,667,428	519,301	2,186,732	559	1949 United Kingdom
	1949	58,094	11,143,985	3,968,068	5,872,699	1,178,345	12,230	7,063,274	1,743,276	545,040	2,288,316	562	1949 United Kingdom

Part II: Non-manufacturing trades (Orders II, XVII, XVIII, XX (part), XXIV (part))

Mining and Quarrying (Order II)													
Region	Year	Establishments	Gross output	Net output	operatives	other workers	working proprietors	total	operatives	other workers	total	Net output per person employed	Region
		No.	£'000	£'000	No.	No.	No.	No.	£'000	£'000	£'000	£	
England													
Northern	1949	363	98,804	78,080	164,602	7,205	37	171,844	67,585	3,467	71,052	454	1949 Northern
	1948	370	94,782	75,804	168,217	7,197	41	175,455	67,353	3,420	70,773	432	1948 Northern
East and West													East and West
Ridings of	1949	196	93,710	77,714	138,414	7,488	5	145,907	54,603	3,359	57,962	533	1949 Ridings of
Yorkshire	1948	202	88,945	73,330	140,556	7,054	18	147,628	54,231	3,213	57,444	497	1948 Yorkshire
North Midland	1949	257	95,876	79,572	110,718	6,317	16	117,051	47,528	2,952	50,480	680	1949 North Midland
	1948	242	89,910	74,950	109,435	5,982	15	115,432	44,776	2,769	47,545	649	1948 North Midland
Eastern	1949	66	1,909	1,400	1,534	280	7	1,821	534	138	672	769	1949 Eastern
	1948	59	1,681	1,333	1,379	273	5	1,657	460	120	580	804	1948 Eastern
London and South Eastern	1949	67	6,102	4,868	7,775	637	2	8,414	3,260	302	3,562	579	1949 London and South Eastern
	1948	71	6,236	4,862	8,337	683	3	9,023	3,239	327	3,567	539	1948 London and South Eastern
Southern	1949	45	1,338	997	1,241	194	5	1,440	425	88	513	692	1949 Southern
South Western	1949	214	11,342	8,054	15,274	1,540	20	16,834	5,332	661	5,992	478	1949 South Western
Total - Southern; and South Western	1949	259	12,680	9,051	16,515	1,734	25	18,274	5,757	748	6,505	495	1949 Total - Southern; and South Western
	1948	254	12,510	9,435	17,177	1,539	26	18,742	5,715	651	6,366	503	1948 Total - Southern; and South Western
North Western	1949	172	38,710	28,559	58,661	3,987	10	62,658	21,261	1,878	23,139	456	1949 North Western
	1948	169	37,295	27,766	59,259	3,531	11	62,801	21,417	1,639	23,055	442	1948 North Western
Midland (e)	1949	547	116,446	92,912	189,595	10,495	81	200,171	69,708	4,495	74,204	464	1949 Midland (e)
Wales	1948	554	109,684	87,643	190,618	9,742	85	200,445	69,248	4,335	73,583	437	1948 Wales
Total - England and Wales (e)	1949	1,927	464,237	372,156	687,814	38,143	183	726,140	270,237	17,340	287,577	513	1949 Total - England and Wales (e)
	1948	1,921	441,042	355,122	694,978	36,001	204	731,183	266,440	16,474	282,913	486	1948 Total - England and Wales (e)
Scotland (e)	1949	440	62,857	48,484	92,023	5,137	69	97,229	36,930	2,356	39,285	498	1949 Scotland (e)
	1948	436	61,361	47,824	90,356	4,859	66	95,281	35,559	2,265	37,824	502	1948 Scotland (e)
Great Britain													
	1949	2,367	527,094	420,639	779,837	43,280	252	823,369	307,167	19,695	326,862	511	1949 Great Britain
	1948	2,357	502,403	402,946	785,334	40,860	270	826,464	301,999	18,738	320,737	488	1948 Great Britain
Northern Ireland	1949	128	1,308	929	2,921	14							

TABLE 3 (continued)

Part II: Non-manufacturing trades (continued) (Orders II, XVII, XVIII, XX (part), XXIV (part))

Region (1)	Establishments (2)	Gross output (3)	Net output (4)	Number employed (b) (c)				Wages and salaries (c)			Net output per person employed (12)	Region (13)	
				operatives (5)	other workers (6)	working proprietors (7)	total (8)	operatives (9)	other workers (10)	total (11)			
Building and Contracting (f) (Contd.)													
England (Contd.)	No.	£'000	£'000	No.	No.	No.	No.	£'000	£'000	£'000	£	England (Contd.)	
Southern	1949	58,996	29,695	73,044	23,462	407	1949 Southern	
	1948	55,011	28,335	72,875	22,302	389	1948 Southern	
North Western	1949	121,184	60,269	144,196	47,727	418	1949 North Western	
	1948	113,710	58,516	147,223	46,037	397	1948 North Western	
South Western	1949	63,453	32,346	83,357	25,709	388	1949 South Western	
Midland	1949	145,643	70,188	167,502	55,089	419	1949 Midland	
Wales	1949	1949 Wales	
Total - South Western; Midland; and Wales	1949	209,096	102,533	250,859	80,798	409	1949 Total - South Western; Midland; and Wales	
	1948	192,320	96,595	244,931	75,007	394	1948 Total - South Western; Midland; and Wales	
Total - England and Wales	1949	965,883	479,502	1,138,045	379,804	421	1949 Total - England and Wales	
	1948	893,676	456,784	1,133,886	359,273	403	1948 Total - England and Wales	
Scotland	1949	121,534	59,395	144,777	46,570	410	1949 Scotland	
	1948	108,971	54,640	141,297	42,635	387	1948 Scotland	
Great Britain	1949	16,928 (g)	1,087,416	538,897	1,149,226	123,439	10,157	1,282,822	374,910	51,464	426,374	420	1949 Great Britain
	1948	17,360 (g)	1,002,647	511,423	1,146,797	117,502	10,884	1,275,183	355,682	46,225	401,907	401	1948 Great Britain
Northern Ireland	1949	322	17,614	8,028	22,492	1,761	511	24,764	5,934	581	6,515	324	1949 Northern Ireland
United Kingdom	1949	17,250 (g)	1,105,030	546,925	1,171,718	125,200	10,668	1,307,586	380,845	52,044	432,889	418	1949 United Kingdom
Gas, Electricity and Water (Order XVIII)													
England												England	
Northern	1949	23,858	14,807	11,584	4,540	-	16,124	3,725	1,771	5,496	918	1949 Northern	
	1948	20,484	11,248	10,785	3,827	-	14,612	2,850	1,352	4,201	770	1948 Northern	
East and West Ridings of Yorkshire	1949	39,220	20,821	20,320	5,908	-	26,228	6,716	2,535	9,250	794	1949 East and West Ridings of Yorkshire	
	1948	39,054	21,200	19,228	5,673	-	24,901	6,586	2,394	8,980	851	1948 East and West Ridings of Yorkshire	
North Midland	1949	30,417	17,734	14,042	4,621	-	18,663	4,460	1,981	6,441	950	1949 North Midland	
	1948	27,520	15,616	13,184	4,143	-	17,327	4,085	1,617	5,702	901	1948 North Midland	
Eastern	1949	37,193	25,448	16,331	7,463	-	23,794	5,233	3,004	8,238	1,070	1949 Eastern	
	1948	33,489	23,264	14,964	6,796	-	21,760	4,725	2,668	7,393	1,069	1948 Eastern	
London and South Eastern	1949	134,750	68,896	70,852	26,549	-	97,401	25,372	11,964	37,336	707	1949 London and South Eastern	
	1948	129,657	65,141	69,437	24,758	-	94,195	24,567	10,942	35,509	692	1948 London and South Eastern	
Southern	1949	32,183	20,234	16,286	6,469	-	22,755	5,135	2,588	7,723	889	1949 Southern	
	1948	30,261	19,366	15,491	5,893	-	21,384	4,700	2,254	6,954	906	1948 Southern	
South Western	1949	22,662	10,973	13,528	5,092	-	18,620	4,154	1,953	6,107	589	1949 South Western	
	1948	21,818	10,699	12,739	4,228	1	16,968	3,807	1,604	5,412	631	1948 South Western	
Midland	1949	45,824	21,967	21,633	7,322	-	28,955	7,234	3,017	10,251	759	1949 Midland	
	1948	43,475	20,168	20,786	6,738	-	27,524	6,743	2,792	9,536	733	1948 Midland	
North Western	1949	69,454	36,816	32,996	10,705	-	43,701	10,742	4,426	15,168	842	1949 North Western	
	1948	68,229	36,933	33,208	9,578	-	42,786	10,365	3,877	14,243	863	1948 North Western	
Total - England	1949	435,561	237,696	217,572	78,669	-	296,241	72,771	33,239	106,010	802	1949 Total - England	
	1948	413,986	223,634	209,822	71,634	1	281,457	68,428	29,500	97,929	795	1948 Total - England	
Wales	1949	20,652	12,016	11,356	4,159	-	15,515	3,555	1,633	5,188	774	1949 Wales	
	1948	17,320	9,129	9,532	3,085	-	12,617	2,877	1,170	4,047	724	1948 Wales	
Scotland	1949	38,375	20,346	19,800	5,704	-	25,504	6,112	2,283	8,394	798	1949 Scotland	
	1948	36,045	19,240	18,758	4,832	-	23,590	5,678	1,883	7,561	816	1948 Scotland	
Great Britain	1949	494,588	270,058	248,728	88,532	-	337,260	82,438	37,154	119,592	801	1949 Great Britain	
	1948	467,350	252,003	238,112	79,551	1	317,664	76,983	32,553	109,537	793	1948 Great Britain	
Northern Ireland	1949	8,678	4,757	4,926	1,286	-	6,212	1,427	507	1,935	766	1949 Northern Ireland	
United Kingdom	1949	503,266	274,815	253,654	89,818	-	343,472	83,865	37,662	121,527	800	1949 United Kingdom	
Other trades (h) (Orders XX (part), XXIV (part))													
England and Wales	1949	3,205	373,952	92,126	146,087	26,243	857	173,187	28,392	12,241	40,633	532	1949 England and Wales
	1948	3,427	378,701	94,955	151,997	28,059	969	181,025	29,022	12,259	41,280	525	1948 England and Wales
Scotland	1949	264	11,512	5,082	14,920	2,012	106	17,038	2,608	614	3,221	298	1949 Scotland
	1948	297	15,550	6,766	17,204	2,388	118	19,710	3,255	739	3,994	343	1948 Scotland
Great Britain	1949	3,469	385,463	97,207	161,007	28,255	963	190,225	31,000	12,855	43,854	511	1949 Great Britain
	1948	3,724	394,251	101,721	169,201	30,447	1,087	200,735	32,277	12,998	45,275	507	1948 Great Britain
Northern Ireland	1949	46	1,639	907	3,095	366	55	3,516	496	78	574	258	1949 Northern Ireland
United Kingdom	1949	3,515	387,102	98,114	164,102	28,621	1,018	193,741	31,495	12,933	44,428	506	1949 United Kingdom
Total - non-manufacturing trades													
England (e)	1950	1,259,609	669,778	1,050,921	400,653	637	1950 England (e)
	1949	1,146,812	638,236	1,051,449	383,216	607	1949 England (e)
	1949	2,104,366	1,093,040	2,122,829	741,384	515	1949 England (e)
	1948	2,000,504	1,047,124	2,115,452	709,627	495	1948 England (e)
Wales	1950	97,286	73,115	146,924	54,376	498	1950 Wales
	1949	94,813	70,391	152,954	54,108	460	1949 Wales
	1949	155,918	100,455	226,299	77,828	444	1949 Wales
	1948	144,221	92,500	224,716	75,815	412	1948 Wales
Scotland (e)	1950	114,298	75,053	137,939	52,106	544	1950 Scotland (e)
	1949	109,796	73,629	139,400	50,804	528	1949 Scotland (e)
	1949	234,278	133,306	284,548	97,470	468	1949 Scotland (e)
	1948	221,927	128,469	279,878	92,013	459	1948 Scotland (e)
Great Britain	1950	1,471,193	817,946	1,334,056	1,728	1,335,784	507,136	612	1950 Great Britain
	1949	1,351,421	782,256	1,342,609	1,194	1,343,803	488,129	582	1949 Great Britain
	1949	2,494,562	1,326,802	2,338,798	283,506	11,372	2,633,676	795,515	121,167	916,682	504	1949 Great Britain	
	1948	2,366,652	1,268,093	2,339,444	268,360	12,242	2,620,046	766,941	110,515	877,456	484	1948 Great Britain	
Northern Ireland	1950	11,537	6,470	10,462	2,037	179	12,678	2,621	674	3,295	510	1950 Northern Ireland	
	1949	11,075	6,523	10,871	1,764	250	12,885	2,520	615	3,135	506	1949 Northern Ireland	
	1949	29,239	14,621	33,434	3,555	764	37,753	8,466	1,207	9,673	387	1949 Northern Ireland	
United Kingdom	1950	1,482,731	824,416	1,346,555	1,907	1,348,462	510,432	611	1950 United Kingdom
	1949	1,362,495	788,779	1,355,244	1,444	1,356,688	491,265	581	1949 United Kingdom
	1949	2,523,800	1,341,422	2,372,232	287,061	12,136	2,671,429	803,981	122,374	926,355	502	1949 United Kingdom	

Part III: All trades

TABLE 3 (continued)

Country (1)	Establishments (2)	Gross output (3)	Net output (4)	Number employed (b) (c)				Wages and salaries (c)			Net output per person employed (c) (12)	Country (13)
				operatives (5)	other workers (6)	working proprietors (7)	total (8)	operatives (9)	other workers (10)	total (11)		
	No.	£'000	£'000	No.	No.	No.	No.	£'000	£'000	£'000	£	
England (e)	1950	11,377,659	4,282,079	6,916,523	2,416,889	619	1950 England (e)
	1949	10,025,180	3,886,619	6,771,769	2,267,989	574	1949
	1949	11,590,467	4,508,581	8,112,949	2,708,663	556	1949
	1948	10,726,083	4,351,173	7,948,516	2,537,001	547	1948
Wales	1950	578,429	220,169	379,222	135,782	581	1950 Wales
	1949	507,230	204,135	375,187	129,268	544	1949
	1949	593,410	239,159	457,717	155,704	523	1949
	1948	516,400	213,346	443,741	147,687	481	1948
Scotland (e)	1950	1,101,746	423,690	772,502	252,852	548	1950 Scotland (e)
	1949	994,374	387,618	762,368	240,765	508	1949
	1949	1,231,238	480,487	959,434	301,942	501	1949
	1948	1,153,356	473,592	942,759	284,443	502	1948
Great Britain	1950	13,057,835	4,925,938	8,058,075		10,172	8,068,247	2,805,524	611	1950 Great Britain
	1949	11,526,783	4,478,373	7,898,747		10,577	7,909,324	2,638,023	566	1949
	1949	13,415,115	5,228,228	8,064,529	1,443,913	21,658	9,530,100	2,506,652	659,657	3,166,309	549	1949
	1948	12,395,840	5,038,111	7,938,192	1,374,614	22,210	9,335,016	2,367,827	601,304	2,969,132	540	1948
Northern Ireland	1950	251,532	77,273	155,713	19,247	2,082	177,042	35,522	7,330	42,852	436	1950 Northern Ireland
	1949	225,324	69,747	152,197	18,724	2,070	172,991	33,054	6,919	39,973	403	1949
	1949	252,671	81,262	180,402	21,493	2,708	204,603	40,605	7,757	48,363	397	1949
United Kingdom	1950	13,309,368	5,003,212	8,233,035		12,254	8,245,289	2,848,377	607	1950 United Kingdom
	1949	11,752,106	4,548,121	8,069,668		12,647	8,082,315	2,677,996	563	1949
	1949	13,667,785	5,309,490	8,244,931	1,465,406	24,366	9,734,703	2,547,257	667,415	3,214,671	545	1949

(a) Particulars of employment in small firms and of total employment in all firms, including estimates in respect of firms not making satisfactory returns, are given below. The figures for 1950, shown in italics, are not completely comparable with those for the earlier years, see Introductory Note.

Manufacturing trades		Number of small firms	Number employed in small firms	Estimated number employed in all firms
England	1950	42,664	217,580	6,115,597
	1949	66,142	312,296	6,114,708
	1948	63,488	303,436	6,333,652
				..
Wales	1950	1,569	6,390	239,529
	1949	3,223	11,881	243,001
	1948	3,126	12,606	..
Scotland	1950	4,497	20,804	657,642
	1949	7,461	34,919	714,718
	1948	7,347	33,607	7,012,768
Great Britain	1950	48,730	244,774	7,611,877
	1949	76,826	359,096	7,291,371
	1948	73,961	349,649	7,143,947
Northern Ireland	1950	157,043
	1949	2,312	8,931	175,781
United Kingdom	1950	48,730	244,774	7,168,920
	1949	79,138	368,027	7,467,152

- (b) Average number for operatives; average number (1949) or number at September 25 (1948) for other workers.
- (c) Excluding outworkers.
- (d) These particulars relate to Government establishments in England classified to the Radio and Telecommunications Trade or to the Wholesale Slaughtering Trade; the latter cover all abattoirs and slaughterhouses in England controlled by the Ministry of Food - no operatives are directly employed by the Ministry, killing being done on their behalf by contractors.
- (e) To avoid the risk of disclosure of information relating to individual firms, the small figures for slate quarries in Scotland have been included in the 'Mining and Quarrying' total for England and Wales (and in the aggregates for Wales and the Midland region of England). For the totals for non-manufacturing trades and all trades these quarry particulars are included in the figures shown for England.
- (f) Private firms and Government Departments in Great Britain in the Building and Contracting Trade were allowed to make one return for all work done irrespective of where the work was carried out, but they were required to furnish certain details in respect of work done in each industrial area. These area details have been adjusted, where necessary, to provide information on the standard region basis; consequently, the figures shown in the table for the East and West Ridings of Yorkshire, North Midland, Eastern, London and South Eastern, and Southern regions are partly estimated.
- (g) The figures included for private firms in Great Britain in the Building and Contracting Trade (15,774 in 1949 and 16,143 in 1948) relate to number of firms, not establishments.
- (h) Scrap Metal (1948 only); Textile Converting; Tea Blending and Coffee Roasting; and Laundry, Cleaning, Job Dyeing and Carpet Beating trades.

DS 8064/1

84/1/2987 K.16 10/53 TL

THE
BOARD OF TRADE
JOURNAL

A weekly information service published in the interests of British industry. The Journal contains up-to-date news about

EXPORT OPPORTUNITIES
CUSTOMS REGULATIONS
EXHIBITIONS AND FAIRS
TARIFF CHANGES

Information on these subjects is regularly supplied by the world-wide organisation of the Department's overseas officers.

Other regular features include statistical tables analysed to show the trends of production, trade and commerce.

9d. Weekly By post 11d.

Annual Subscription 45s. net.

Specimen number free from.

HER MAJESTY'S STATIONERY OFFICE

at the addresses on page four of the cover

CROWN COPYRIGHT RESERVED

PRINTED AND PUBLISHED BY HER MAJESTY'S STATIONERY OFFICE

To be purchased from

York House, Kingsway, LONDON, W.C.2 423 Oxford Street, LONDON, W.1

P.O. Box 569, LONDON, S.E.1

13a Castle Street, EDINBURGH, 2 1 St. Andrew's Crescent, CARDIFF

39 King Street, MANCHESTER, 2 Tower Lane, BRISTOL, 1

2 Edmund Street, BIRMINGHAM, 3 80 Chichester Street, BELFAST

or from any Bookseller

1953

Price 2s 0d net

PRINTED IN GREAT BRITAIN

S.O. Code No. 51-326-1