

QUESTIONS FOR School Board Candidates.

REVISED OCTOBER 1894.

SIR or MADAM,

In connection with your Candidature for the School Board, I should be obliged if you would be good enough to answer the following questions, and return the paper to me.

I am, yours faithfully,

(Name of Elector).....

(Address of Elector).....

QUESTIONS.	ANSWERS.
(A.) School Board Policy.	
I.—SCHOOL ACCOMMODATION.	
Are you in favor of :—	
1. The liberal provision of well-built and conveniently situated school buildings, and of gymnasiums and swimming baths?	
2. Larger and better playgrounds, with equipments for physical recreation, to be opened on Sundays and after school hours?	
3. The generous supply of educational apparatus, pianos, pictures, models, etc.?	
4. The construction of a central hall in all new schools, and where possible in existing schools?	
5. The granting of school halls as cheaply as possible for public meetings under proper regulations?	

QUESTIONS.

ANSWERS.

II.—THE STAFF.

6. Will you support the provision for every school of a sufficient and competent trained teaching staff, and endeavor so to lessen the excessive numbers of the present classes, that not more than fifty children on the roll shall be assigned to any one teacher?

7. Will you take care that no question of religion shall be allowed to influence any appointment by any committee on which you sit?

8. Will you urge that the scale of payment for women teachers should be the same as that for men?

III.—A WIDER & MORE RATIONAL SYSTEM OF EDUCATION.

Are you in favor of:—

9. The systematic establishment of Higher Standard Schools?

10. The development of Kindergarten teaching, object lessons, physical education and manual training for boys and girls alike?

11. The systematic provision of special departments for physically and mentally defective children?

12. The encouragement and development of free evening continuation classes in Board Schools?

13. The making of cookery and laundry-work optional instead of compulsory as methods of manual training in girls' schools?

IV.—PROPER TREATMENT OF WORKERS.

14. Will you insist that in all work carried out by the Board the Trade Union rate of wages shall be paid, and the hours of work shall be limited to a maximum of eight per day, or 48 in each week?



QUESTIONS.

15. Will you, in every possible case, especially in the case of printing and building, advocate direct public employment of labor in place of the intervention of a contractor ?

16. Whenever it is found necessary to employ a contractor, will you insist upon the insertion, in all contracts for supplies as well as for works, of clauses stipulating, under adequate penalties, to be rigidly enforced :

- (a) against sub-contracting or sweating ?
- (b) for payment of Trade Union rate of wages and observance of Trade Union hours and conditions, for each trade, as specified in a schedule to the contracts ?
- (c) that, whenever possible, the working day shall be eight hours only ?

17. Will you support all School Board employees in securing freedom to join the Trade Union of their occupation, or (if none such exists) to form a union for themselves ?

18. Are you in favor of granting a week's holiday every year, with full pay, to all the permanent employees of the Board, and will you take care that all workmen are allowed reasonable sick pay in case of illness or accident ?

(B.) The Reform of the Laws dealing with Education and of the spirit in which they are administered.

Will you support any attempt to provide that :—

19. No grant of public money be made to any school not controlled by a School Board or other public representative body ?

20. Training Colleges be established at convenient centres under full public control and free from sectarian influences ?

21. Power be given to School Boards, pending the creation of a complete system of public secondary education, to establish, out of public funds, scholarships to be held at secondary schools ?

ANSWERS.

22. Power be given to School Boards* to provide free meals for children?

23. Power be given to School Boards to provide skilled nurses to visit the schools?

24. Special magistrates be appointed in large towns to deal with School Board cases?

25. The age of compulsory attendance of all scholars for the full time be raised to fourteen?

26. A fair proportion of Inspectors of schools be appointed from men and women elementary teachers?

27. The School Board electoral areas in London be assimilated to the County Council and Parliamentary divisions?

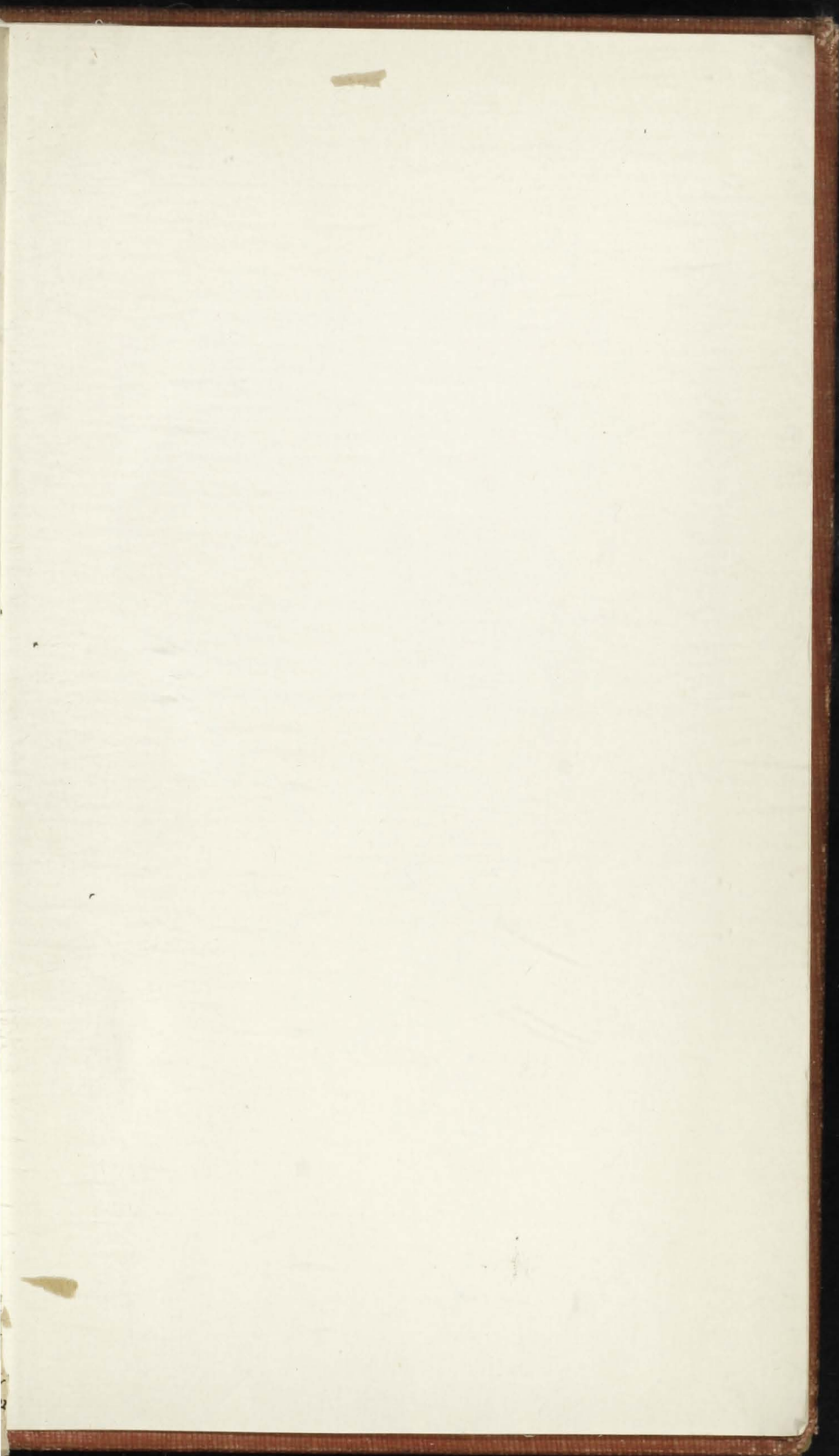
28. Powers, similar to those possessed by Parish and District Councils, be given to School Boards to acquire land for school sites at a fair price, without additional allowance being made to the owners on account of purchase being compulsory?

Signature of Candidate.....

FABIAN TRACTS.

- 52.—State Education at Home and Abroad. By J. W. MARTIN. 16 pp., 1d.; or 9d. per doz.
- 55.—The Workers' School Board Program. 20 pp., 1d.; or 9d. per doz.
- 25.—Questions for School Board Candidates. (Revised 1894). 6 for 1d.; or 1s. per 100.
- 42.—Christian Socialism. By Rev. S. D. HEADLAM. 16 pp., 1d.; or 9d. per doz.
- 47.—The Unemployed. By JOHN BURNS, M.P. 20 pp., 1d.; or 9d. per doz.
- 51.—Socialism: True and False. By SIDNEY WEBB. 20 pp., 1d.; or 9d. per doz.

For list and particulars of other Tracts, write to the Secretary of the Fabian Society, 276 Strand, W.C. Printed lists of questions to be put to candidates for the Guardians, Vestries, Town, County, District and Parish Council, or Parliament, will be sent free. Complete set of 52 Tracts, price 2s. 3d. post free; or, bound in buckram, 3s. 9d. post free.



wo
nat
and
son
are
wh
gar
the

ind

exi
the
wh
cou
the
to
rati
(Jo

esti
ma

I
adu
occ
188
tion
wh
der
tion

T
fiel
onl
of
tio

of
Nat
hy
exte

up
cos

not

