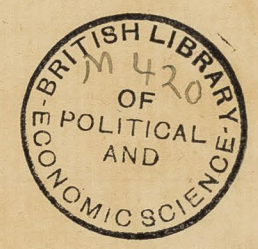


If found, Please  
return to  
Charles Booth  
9 Adelphi Terrace  
Strand.

Book. 13 K  
Police B356  
Districts. 19. 18

[i]

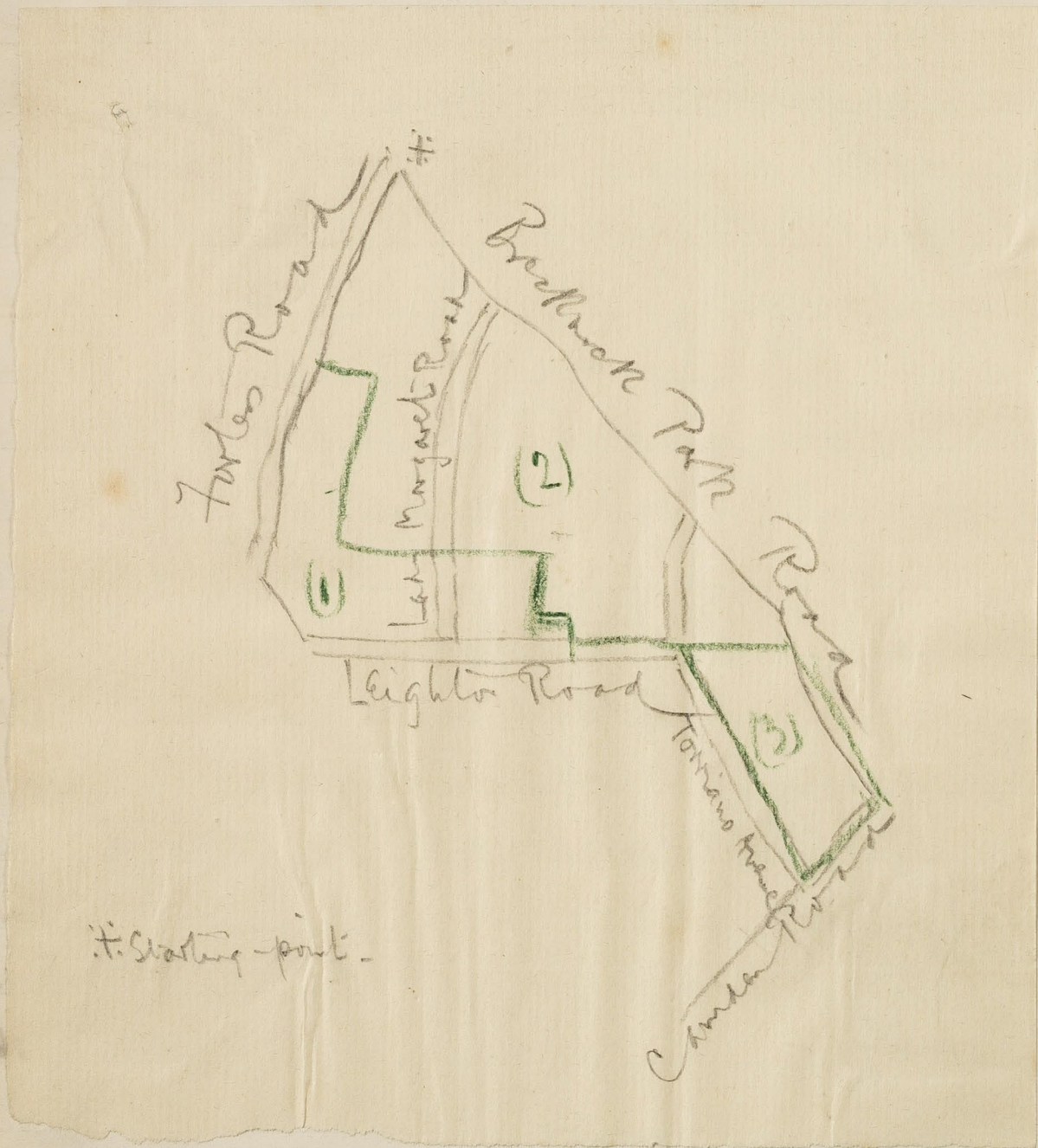
COLL U B 356



*[Faint, illegible handwriting]*

Name	District	Parish	Page
Tomkin Insp <sup>r</sup> W	Kentish T <sup>n</sup> subdivision, Y Division	Part of S <sup>t</sup> John, Baptist, S <sup>t</sup> Benet's, S <sup>t</sup> Luke's *	1
Tomkin Insp <sup>r</sup> W	_____ " _____	" S <sup>t</sup> John Baptist, S <sup>t</sup> Luke & S <sup>t</sup> Paul *	9
Tomkin Insp <sup>r</sup> W	_____ " _____	" Holy Trinity *	19
Tomkin Insp <sup>r</sup> W	_____ " _____	" S <sup>t</sup> Andrew & S <sup>t</sup> Martin's *	31
Tomkin Insp <sup>r</sup> W	_____ " _____	" S <sup>t</sup> Barnabas *	43
Tomkin Insp <sup>r</sup> W	_____ " _____	" S <sup>t</sup> Andrew & S <sup>t</sup> Martin's *	49
Tomkin Insp <sup>r</sup> W	_____ " _____	" S <sup>t</sup> Anne Highgate S <sup>t</sup> Mary Brookfield S <sup>t</sup> Benet S <sup>t</sup> John Baptist *	55
Kentish Town Subdivision - General Remarks			+ 69
Walk on a Sunday			81
Bowles Inspector	Somers Town Subdivision	Part of S <sup>t</sup> Michaels & S <sup>t</sup> Stephens *	87
Bowles	_____ " _____	" S <sup>t</sup> Stephens S <sup>t</sup> Matthew, Old S <sup>t</sup> Pancras & S <sup>t</sup> Mary *	97
_____ " _____	_____ " _____	" S <sup>t</sup> Mary, Old S. Pancras & Christ Church	113
_____ " _____	_____ " _____	" S <sup>t</sup> Mary, S <sup>t</sup> Pancras & Christ Church	123
_____ " _____	_____ " _____	" S <sup>t</sup> Paul & S <sup>t</sup> Thomas	145
Mountfield S.D. Insp <sup>r</sup>	"Y" Division, Highgate & Up. Holloway S.D.	" S <sup>t</sup> Michaels & S <sup>t</sup> Annes	155
Vedy Superint <sup>t</sup>	"Y" Division	Interview	167

District 19.



\* Starting point.

Lupton & Raveley Streets - pk.b.<sup>2</sup>

Osprunge R<sup>o</sup> E of Lady Margaret R<sup>o</sup> pk.b.<sup>2</sup>

Leighton R<sup>o</sup> pk

- (1) Part of St John Baptist Parsh.
- (2) — — — — S. Benet's Parsh
- (3) — — — — S. Luke's.

Notes of a walk with Inspector ~~Tomkin~~ W. Tomkin, of the Y Division, over part of the <sup>Police</sup> ~~Wentish~~ Town Sub-division as shown in the plan on the other side. Tomkin has been stationed at Helmes Road for six years, and has been an Inspector for about 12 years. He has served in most parts of London except the East End, and is a man on the right side of 40. He is fairly intelligent.

Starting at the N. corner of the plan, we went down Lupton and Raveley Streets -- both 3 st. well-built houses, now occupied by a mixed class, ~~xxxxxx~~ single and lodging-letting: from red to pink-barred. Then down Osprunge Road: houses much the same, but "a better class" living E. of Lady Margaret Road. The meaning of this is the absence of lodgers, and here the streets should be red as map. But opposite the church at the W. end, from red to p.bd. Breckneck Park Road, from the Boston to Leighton Road, W. side, 3 st. houses for the most, and mainly in hands of single occupants, without lodgers: leave red as map. West down Leighton Road: Now much poorer than Breckneck Park Road, and almost entirely working-class. A few "apartment" notices but the houses, mainly 3 st., mostly sub-let unfurnished to w-class: from p.bd. to pink. At the W. end N. up Charlton King's Road: Allisen's piano factory on left, and a good many of the employees living in the street. Houses 2 st. pink, as map.

*Terriano Mews - purple*

*Leighton Grove - all pk.*

*Leverton Place - N side purple*

Terriano Avenue N. of Leighton Rd. 3 st. houses, let out, like so many others in this n'hood, mainly by floors, to working-class occupants, good class, with some of the police, pink, as map. (~~XXXXXXXXXXXX~~)

*Terriano Mews: dwellings on N.W. side; Collins. from p. to purple.*

~~XXXXXXXXXXXX~~ Thence to Leighton Grove, now all like Terriano Avenue, pink, including the red bit at the lower S.W. side.

Leighton Crescent remains red.

Willingham Terrace, mainly two st. houses, let at about 12/- a week, remains pink. West along

Falkland Road, with larger houses again, some running to 4 storeys, nearly all occupied, like Terriano Avenue, by a good working-class: pink as map. South down

Falkland Place: small four room cottages, with back yards, let at about 8/- a week, mainly occupied by one family, poorer than the ~~XXXXXXXXXXXX~~ streets of big houses round, but still pink, as map, of a lower grade. South into

Leverton Place, W. of Leverton St: nothing here but a blacksmith's, pink, (not marked). The police station now in Helme Road, and the old premises used by a builder for business.

Leverton St. very much like Falkland Road; 3 st. houses; good working class; 3 or 4 families to a house; let by floors at 8/- et 9/- a week for three rooms as a rule. <sup>pink.</sup> Along the W. side not marked on map,

*Montpelier Rd: very much the same. Pink-bd to pink.*

Railway Mews - pk

Lady Margaret Road - pk b<sup>o</sup>

Torriano Avenue - S end pk

Torriano Gardens - pk

Hargrave Place  $\frac{N}{S}$  ends purple

(3)

Railway Mews; small cab-proprietors, costers etc. "not so poor as Falkland Place", but still pink of the lower grade. Ascham St., and its eastern continuation -- Dunollie St. with Dunollie Place, and Countess Road all like Torriano Avenue, etc. 3 st. working class; "all the houses let out, generally one family <sup>5</sup> floor, and thus three families to a house": higher grade pink, as map.

Lady Margaret Road, now the customary mixture of "apartments" and single occupants: from red to pink-barred.

There was little or no life in any of these streets; no gossiping house-wives or groups of children to help to interpret the streets to the passer-by. The most instructive feature was the glimpses into back gardens; these generally revealed clothes hanging out to dry, and in three-storeyed Dunollie Place a clothes line close by showed sorry linen, and a torn waistcoat that told clearly of working-class occupants.

Re-crossing Leighton Road, we turned down Torriano Avenue; a few poor shops at the top end of this southern bit of the Avenue, and the houses on the west side lower down detached or semi-detached, but the whole street now working-class, and should go from pink-bd. to pink.

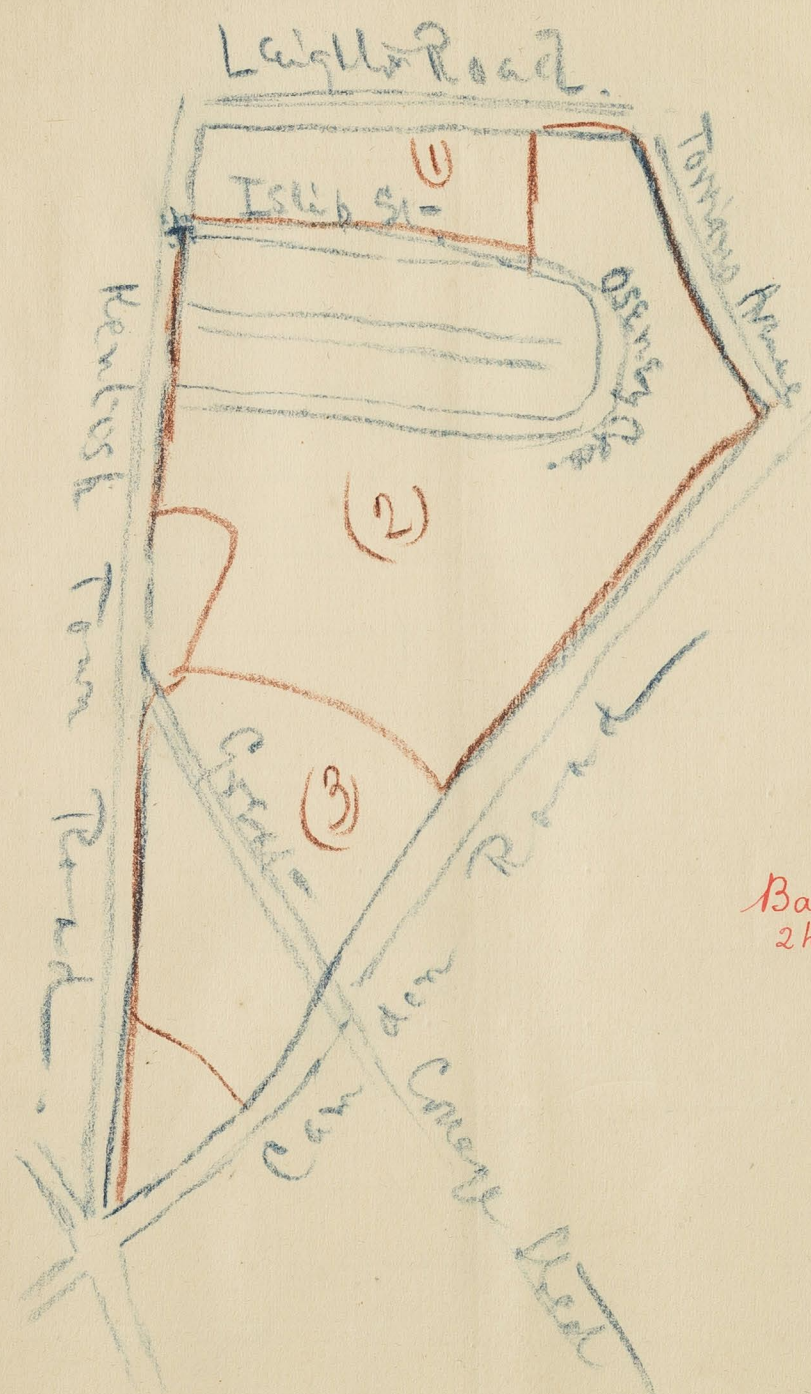
Torriano Gardens, four 3 st, houses on each side, the same: from pink-bd. to pink.

Hampshire St. with Hargrave Place, make, with Peckwater St.

(4)

the poor bits of this n'hood, but all have improved. On the west side of Hampshire St. there are some new 2 st. flats, "2 or 3 prostitutes here"; on the other side, 2 st. cottages "sewer-men, navvies etc. some earning from £2 to £3 per week" but the street remains purple, as map. The northern bend is the poorest. Hargrave Place, north of Hampshire St, east side, four houses, 3 st. done up, the light-blue goes into a slightly longer strip of pink. South of Hampshire St. the people are "low", a good deal of drinking, but most in regular work: from l.b. to purple.

District 19.



Islip St. { exc. S side from  
W end to Hammond  
Street pk

Bartholomew Rd.  
2 hos S of Peckwater Rd. dbb.

Busby Place pk b.

Osney Cres. pk b.

- (1) Part of S. John Baptist Parish
- (2) — S. Luke's Parish
- (3) — S. Paul's —

\* Starting point

Notes of walk (see plan) <sup>price 19/8</sup> with Inspector Tompkin, Oct. 25.

Frideswide Place, north of Islip St. pink, as map. (3 st. houses) Islip St. mainly 3 st. houses, and the rest 2 st. with basement, remains p.bd. on the south side, as far as Hammond St. but the rest from pink bd. to pink. "Gone down wonderful during the last 7 or 8 years". Extension of the railway has cut out about 6 houses on either side, and has perhaps hastened decline. Turned north into

Peckwater St. "vastly improved; used to be dangerous to police going down alone; used to have some ticket of leave men here, none now". A great many railway men living here. Mainly 2 st. houses, and all from purple to pink, except 6 3 st. houses east end, north side; these light blue.

In Bartholomew Road, on west side, between Peckwater St. and Islip St. are two houses, not marked on map, that are the worst in the district. One, a general shop, was the scene of a murder by a woman some years ago. Both houses retain a bad character; should be l.b. black-barred. Eastwards to Busby Place, "apartments"; etc. from red to pink-bd.. Osney Crescent, "many lodgers"; also from r. to pink-bd. Busby Mews remain p. as map.

Torriano Cottages, the scattered pink bits north and east of the pianoforte works, mostly semi-detached, 2 st. 5 rooms, etc. let at 14/- a week, occupied by police etc. <sup>pk-bd</sup> remain pink.



Caversham R<sup>d</sup> W of Bartholomew  
Road - pk b<sup>o</sup>

Bartholomew R<sup>d</sup> (S of Gaisford) pk b<sup>o</sup>

Sandall Road pk b<sup>o</sup>

Patshull Road pk b<sup>o</sup>

Patshull Place - pk

Bartholomew R<sup>d</sup> (pk running E & W) pk b<sup>o</sup>

Bartholomew Villas - pk b<sup>o</sup>

(2)  
Caversham Road, large houses, generally 3 st. and basements, remains red only north of Bartholomew Road; the rest from red to pink bd.; a good many houses to let, going down.

Gaisford St. again with large houses, remains pink-bd, as map. and

Bartholomew Road, running south from Gaisford St. goes from red to p.bd.

Sandall Road in the same way becomes p.bd. while Camden Road Mews remain pink as map

Patshull Road with 3 st. houses, smaller than Gaisford St. takes its colour, and goes from red to p-bd. It is an "apartment" and private street, whereas

Patshull Place on the southern side of it, has become quite working-class, and its 3 st. houses are let out mainly in single floor tenements: from red to pk-~~bd~~.

Lawford Road, mainly 2 st. and basement houses, semi-detached and rather better than Patshull Road, still goes from red to pk-bd, as also does its replica, that part of

Bartholomew Road running east and west, and

Bartholomew Villas No. 34 was a brothel 3 or 4 years ago; was watched and at the end of a week the people hearing of it cleared out. Since then, the street (that had been getting a rather noisy character, from its queer people at 34), has improved. But it is pk-bd, not red, as map.

Rochester Road N side pk b° }  
S -- pk }

Buildings in Gt. College St. E side nr N end - purple)

(3)

Rochester Road, to the south, goes from red to pink-bd. on its northern side. On the southern side, the red part is now entirely let out in working-class tenements, and becomes pink. Rochester Terrace remains red, as map, these houses being still mainly in the hands of single occupants, and lodgers being the exception. At the eastern end Wilmot Place remains pk-bd, with "a respectable class of people". "A wonderful quiet neighbourhood" giving "no trouble" was the comment of my ~~xxxxxxxx~~ guide, and, with two or three exceptions, the remark applies to all the streets around Rochester Place, mews, both east and west of Wilmot Place remains purple, as map, while Reed's Place, to the south of the westerly bit, remains pk. It consists of 14 2 st. stucco houses, six rooms, and outhouse letting at about 15/- a week. Two families to a house, for the most part. "Very quiet".

Bet. Rochester Place and Great College St. north of the Board School, several blocks of Artisans' Dwellings have been built, and the whole of this bit, except the northern apex, (a shop) goes from pink-bd to pink. Asked if any casual labourers occupied the dwellings Tomkin said he thought not; mainly mechanics; they were "pretty strict". The notices up were for "suites of two or three rooms". As I passed the children were coming out of the girls and j

Rochester Mews - purple

Gt College St. Sussex Place  
Camden Road pk (E side)

(4)

infants' divisions, and the great majority probably belonged to "pink" families.

Sussex Place, at the south of Wilmot Place, remains pk-bd, but Rochester Mews, running N. and S. at the E. end of Rochester Road, partly occupied by small cabbies, should go from pk to purple, like Rochester Place.

Clarendon Place, the l.b patch close to the S. end of the Mews remains as map. It is ~~xxx~~ occupied by a poor class of omnibus employees. Passing down

King's Road I asked T. if the occupants were working-class, and got there reply that it "was not so bad as that". But it is going down. Leave pk.bd as map.

Great College St. from Camden Rd. to Sussex Pl. on the E. side is a row of 3 st. houses, new working-class. "I don't think you wd find any furnished apartments there": from pk.bd to pk. The W. side remains pk.bd, as map.

Priory St. S. fr. Gt. Coll. St. remains purple. (No1 was the scene of the murder of a woman by Mrs. Peacey.) Running N.W. from the bottom of Priory St. is

Priory Place, purple still, but with six new houses taking the patch of colour just beyond Jeffreys Place. (No dwellings on the E. side). Continuing north into

Jeffreys St., a quiet working-class st. remains pk. as map. South into

Clarence Road - E end - pk

Kentish Town Road - W side S end pk<sup>2</sup>

High St Camden Town E side S of Union Terrace pk<sup>2</sup>

(5)  
Jeffreys Place: consists of 3 3-st. houses, stucco, running N. and S.; nothing E. and W. as in map. The 3 houses pk. as map.

By Great College St. W. down

Clarence Rd. to Kentish Town Rd. New artisans' dwellings here, both sides, 7 years old: "respectable working-class, rather better than on other side." Southern block, facing Kentish Town Rd. creeper covered, for once in a way making artisans' dwellings quite pretty: from p-bd. to pk. as also parts of the main streets E. and W. where the bdgs. abut. The rest of

Kentish Town Road and Gt. Coll. St. here pk-bd. as map.

Camden St. and Camden Terrace remain pk-bd. as map, and

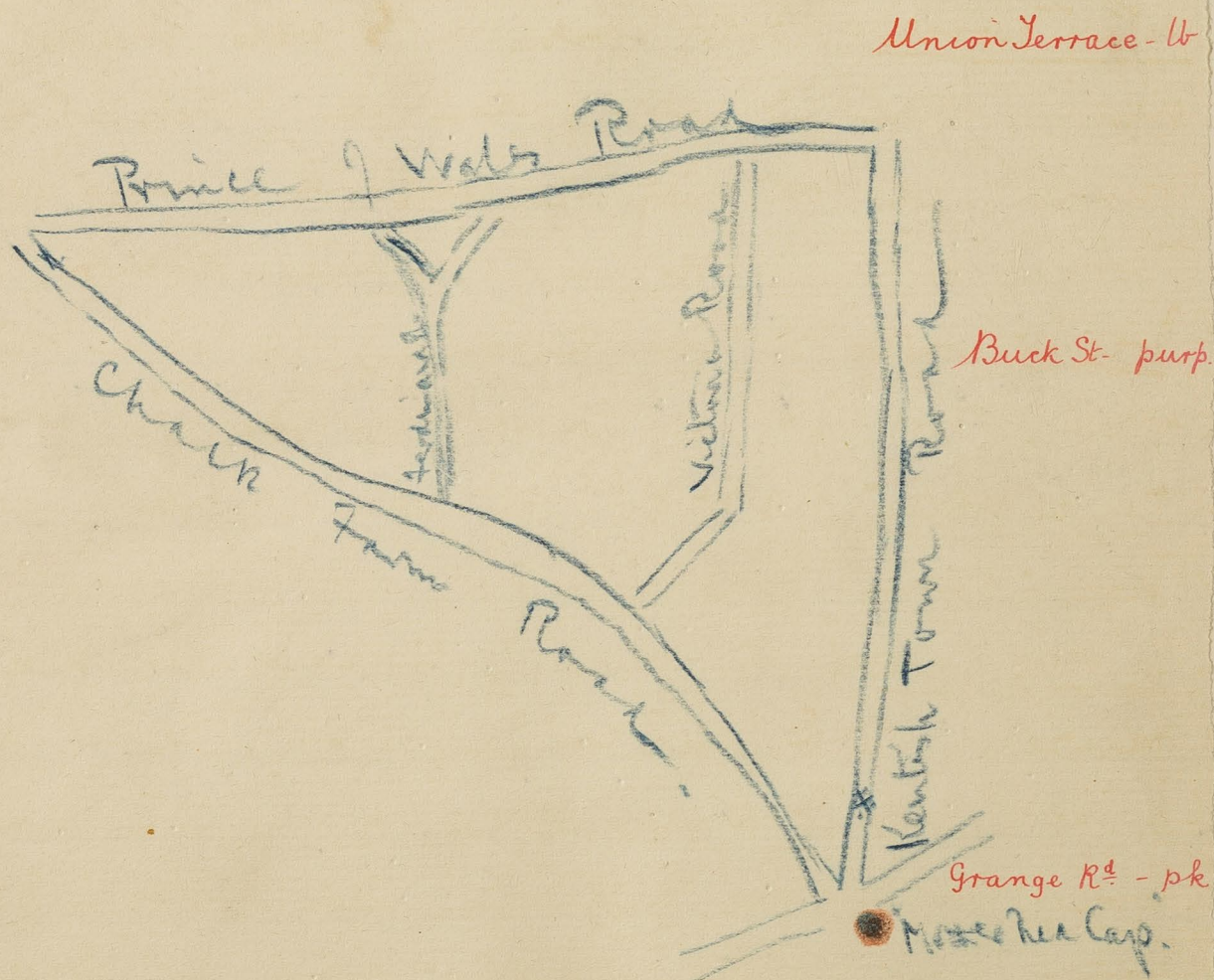
Benny St. pink.

Camden Road, from Brecknock Park Road to Park St. remains red. &

Kentish Town Road, except for the pk bit on the E. side to mark the bdgs. (see above) remains pk-bd. Some shabby buildings,

shops with accommodation (working-class) overhead; Turkish Baths etc put up on W. side, S. of Union Terrace.

District 19.



\* Starting point

Part of Parish of Holy Trinity Parish

Hawley St. - purp.

Hawley Meads - W

Police 19

Notes of a walk with Inspector Tomlin on 10-31-98. For area covered see plan.

Starting N. from the N.W. London Hospital, we turned W down Union Terrace: 3 No. houses; on S side only. Most of them closed, those not most of them been bottles. The 5 or 6 houses remaining are better than they were, & no longer dark-blue. The Terrace should be re-visited for like reasons.

Buck St.: further N. like the whole of this tongue between High St. & Kentish Town Rd., has improved, & goes from l.b. to purple.

Hawley Crescent: 2 No. ways; also improved; brewery property on N. side; remains pink as map. Looking out of it on the N. is

Stuckley Place: the amount of closing on each side should be reversed, the E. side remaining l.b. but the W. from l.b. to pk.

Up the High St. & underneath the Ry. bridge, N.E. along Grange Road; some maps; from purple to pink. S.E. into

Grange Place: ("Street" in map): from l.b. to purple. Back into Grange Road & N.E. into

Hawley Road, the broad pk. street running E. & W. & marked Hawley St. on map: a decent working-class street, remains pk. The great-

Hawley Street, W. of Kenbourne Rd., goes from l.b. to purple. Hawley Meads has only one or two people in it (purple & closed).

Leybourne St - purple

Leybourne Road, was described as "very rough"; aroused lot of people, with some views. But it remains purple.

Leybourne Street, a most narrow connection between Hawley St. & Grange R<sup>d</sup>. got from l.b. to purple. Up into

Hatfield Road (pt. as map) ~~to~~ W. into Chalk Farm Road. N. and N.E. up

Hammond Street: mainly 2 st. houses. On the whole a decent working-class street, described as "rising at night" but mainly from children. Remains pink, as map. The few houses in

Hammond Grove: S. near the W. end of Hammond St. remains purple.

Hatfield Grove: S. of Clarence R<sup>d</sup>; semi-detached, respectable 2 st. houses on S.W. side, remains pink.

Clarence Road: purple and pink, as map. Passed the "Victory" fully-timbered house; been rather rough; recently changed hands, the new landlord being a man well-known in the division. A murder in this house (barmaid) 12 years ago. N. up

Clarence Grove: semi-detached 2 st. cottages on E. side; pianoforte workers etc. from l.b. to purple. also

Orchard Place - l.b. to purple.

Torbay Street: "respectable working-class; rather thickly populated 2 or 3 families to each house" remains pink, as map. Up the N.E. end

Hatfield Road; remains pink, like the rest, although some houses are getting out of repair on N. side. Into

Lewis St. 2 storey; stucco; looks a decent st. At no. 39, a ragged little chap who was watching at the window dropped as I glanced up, and I could see him peering suspiciously and watchfully from below the blind. This particular house might have been any colour, and perhaps concealed a fitting case for the S.P.C.C. But in general the street is now pink and should go to that colour from purple. A street of mechanics, Tomkin said, his only criticism being that some were "not as clean as they might be".

Victoria Road, running N. and S. remains pink as map, with a purple line at the top, on the E. side: a row of small cottages, shabby-looking.

Kelly St. to the E. 2 storey houses; "the worst street for immorality in the division". Only two houses are under observation (Nos. 49 and 51) but plenty of women living here who bring men home occasionally: not professional prostitutes. Nos. 49 and 51 are suspected of being regular brothels: they are "well managed": no complaints of violence or any thing of that sort. This is true of the street as a whole, complaints of robbery being very exceptional. It should remain pink.

Asked as to the awkward subject of collusion, Tomkin did not think that information of any kind would ever be given by the police to warn people under observation. For one thing he said that the force would not know what was being done. Even he knew of these two houses

being under observation by chance, and the constables of the division would certainly not know, unless they were being told of for any special duty. Tomkin doubtlessly exaggerated the secrecy of these proceedings, and if I had thought of asking him if there were other houses in the division under observation of which he knew nothing, I suspect that he would have had difficulty in answering. Back (W.) into Grafton Crescent: 3 st.; empty save for six children, and this number was far above the average of the streets in this neighbourhood, but Tomkin's complaint was of the noise they made on summer evenings. Remains pink, as map. W. by Castle R Healey Street: 3 st. rather better than Grafton Crescent; respectable working-class however; pink still, as map. W. to Hadley St. 2 st.; "not quite so swell as Healey St." A cul-de-sac at the southern end, and not quite so good here, but still pink throughout. Back into Prince of Wales' Rd. by Castle St. (north end); 3 st.; many houses in bad repair; broken windows not uncommon; poorer than the rest of the street; goes from pink to purple. Out of the Prince of Wales' Rd. remains pink-barred as map, down Harmood St again, passing No. 104, one of the two Common Lodging Houses in the division; for men; well-conducted; beds 4d. and 6d.. Turned W. into Harmood Place: 2 st. houses, standing back from the roadway, a cul-de-sac: "quite respectable now; never gives any trou-

*Castle St. N end purple*

*Harmood Place - purple*



Prince of Wales' crescent - pk.

Powlett Place <sup>W of</sup> <sub>Harwood St.</sub> } purple.

ble; cabmen, drivers etc." Goes from l.b. to purple. Back to  
Prince of Wales Crescent: 3 st.; shops on E. side; character  
"rather rough"; from pk-barred to pink. Turned into  
Little Charles Place: a row of poor houses on the E. side,  
divided from Ferdinand Place only by a fence, but the fence  
making ~~it~~ both cul-de-sacs. A sad-looking cretin child here  
grinned vacantly to himself, but he was not in rags -- only  
rather untidy, like a few other children who were playing  
about. No prostitutes living here as formerly. Remains l.b.

Powlett Place lies East and West of Harwood St. The houses on  
the E. remain l.b., but those on the W. have greatly improved  
especially on the S. side. A piano was being played as we pas-  
ed. Here from l.b. to pink, and on the N. side from l.b. to  
purple. All the houses have been put in better repair. Oc-  
cupants described as "respectable working-class; nothing against  
them". Running N. and S. of the W. end of Powlett Pl. is  
Ferdinand Place: N. of Powlett Pl. houses on E. side only, but  
S. on both sides. Mainly old property for this n'hood;  
varied style, but mostly 2 st. houses. Houses and character have  
much improved: "quite a king to what it used to be", but  
still with a good many loose women and larrikin thieves  
about no ragged or unshod children a few women, including  
two sitting on a door-step: "prostitutes, I'll be bound" said  
Tomkin. No brethels. Not bad enough to bar. From l.b. to purple  
Ferdinand St.: with some shops but otherwise now very much li

like Ferdinand Place, as regards occupants. Remains purple. On the W. side of Ferdinand St. are 3 cul-de-sacs. To the S. Haverstock Pl.: 2 st.; again very much like the street. From l.b. to purple. Just to the N. is

Haverstock St: 3 st.; worse than H'stock Pl.; saw the first bare-footed lad I have seen in the whole of the division here "Very low class; rowdy at night". Leave l.b. as map. N. is

Hethersett St: 3 st.; "the worst of the lot"; but drink, not poverty the cause of its stricken appearance; no serious crime anywhere about here -- not convicted criminals: only "youngsters who do a snatch and run". Leave l.b. N. up

Malden Crescent: leave pk-bd. as map. Along P. of Wales Rd

Belmont St: 3 st.; getting entirely working-class; let by floors, at 8/- or 9/-; Except in the S. bit, which remains purple, many of the houses have bn done up, and they are generally in good repair. The whole of the two N. bits, the eastern one of which is a cul-de-sac, go from purple to pk.

Crogland St: <sup>s</sup>mainly 3 st.; "very respectable people; like Belmont St." working-class; let by floors; remains pk. as also

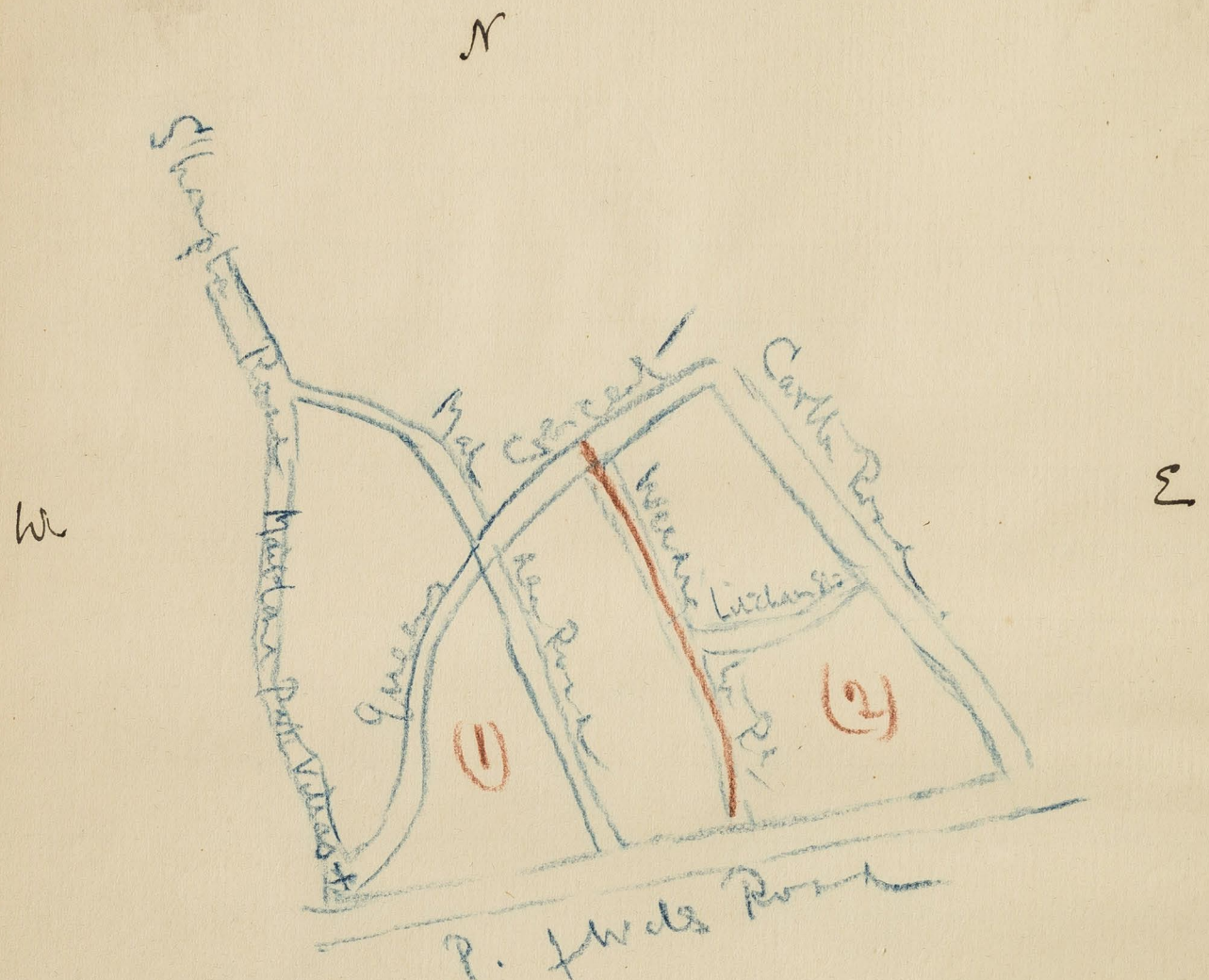
Kirkwood Road: a cul de sac, to the W of ~~it~~ <sup>Crogland St</sup>, Just the same.

Truro St: a little further W. along the P. of W. Road, a short quiet respectable St.; leading only to a Board School; keeps pink, as also does

Craddock St. a short street to the W. of just the same character. Chalk Farm Road remains pk-barred.

*Belmont St: part facing and  
cul-de-sac — pk*

(4)  
District 19.



\* Shady print.

- (1) Part of S. Andrew Parish
- (2) Part of S. Martins - " -

Notes of a walk with Inspector Tenkin, on Nov. 1.98.  
For area covered see plan.

Starting from the W. end of Prince of Wales Rd. up

*pk b°* Maitland Park Villas: on E. side, good 3 st. semi-detached houses; red as map. On the W. not so good; from red to pk.bd.

*pk b°* Maitland Park Road: also 3 st. houses, and again not so good as the Villas. Exam "Apartment" notices in several houses. From ped to pk-bd. At the N. end E along

Grafton Terrace: 3½ st.; "rough"; houses let by floors; remains purple as map. S. is Thurlo Terrace: 3 st.; quiet; cul-de-sac; compares favourably with Grafton Terrace; where there are "many disturbances". Remains pk. E. and S. is Chaston St: 2 st.; "very rough and low"; remains l.b. N. up Malden Place (no houses) turned W. along

Quadrant Grove: 2 st.; little gardens; "fairly respectable, most of them". Pink as map.

Southampton Road: 3½ st.; pk-bd. as map S. of Quadrant Ggrove, *pk* but going from pk-bd to pk. north up to Malden Road.

Malden Rd: 3 and 3½ st.; some shops; tram line to Hampstead; "noisy at night", but mainly from passing, not resident people; a special constable on patrol duty in the evening. Remains pk-bd. S. of Grafton Terr. is

Herbert St: 2½ and 3 st. houses in the part running N.E. and S.W. greatly improved by landlords. Goes from l.b. to purple.

*pure* Queen's Crescent: broad; mainly 3 st.; respectable; still p.b

Thomas Gardens - pk

Modbury St - pk

Rhyll St - W of Malden Rd - pk

Marsden St W end pk

Preston St lb b<sup>d</sup>

(2)

Proceeding S. down Queen's Crescent, the first st. (right Herbert St. the lower part: 3 st.; has been and is better than the l.b., now purple, bit above, and remains pink.

Lower down the Crescent on the same side, are four short bread cul-de-sacs, all of the same character: 2 1/2 st.; quiet and respectable. Nothing to choose between the first, S. Thomas' Gardens: purple on map, and the rest. Should be pk. The rest remain pink as map:

S. John's., S. Anne's, and S. James' Gardens.

On the E. side of the Crescent, opposite S. Thomas' Gdns is Modbury St.: 2 1/2 st.; quiet respectable; "better than Rhyll St. from purple to pk; one little l.b. housestucked away at N. side of E. end, a weed-chopper's queer crib; quite different to anything else in the street. S. is the W. bit of Rhyll St.: 3 st.; improved; quiet; from purple to pk.

~~Marsden St. W. end): "very respectable"; purple to pk. like Rhyll St. above and~~

Marsden St. below, the W. end of which is also "very respectable", and a decent looking st. going from purple to pk.

The Tailors' Institute, alms houses, chapel etc. covers a considerable block of ground at the S.E. corner of the Crescent E. of the Institute, and approached from Marsden St is

Preston St.: rather narrow; 3 st.; described by Tomkin as "as bad as possible", and clearly reckoned by him as the worst

spot in the sub-division. It is "worse than Litcham St.; give more trouble". A good many thieves and prostitutes. Asked if he regarded it as a "criminal" st. he drew the customary distinction between convicted, and amateurish thieving and crime. They are not "experts" here, but it is an ugly place, not safe at night. He would far rather go down Litcham St. than here. Note that the former is a straight st. easily commanded from either end, whereas Preston St. curves at the E. end and turns sharply at the W. end. Most of the doors were shut; women and children were untidy but suggested lowness of standard rather than poverty, though most of the houses looked dark blue. A mission room, with bespattered, rarely used door and closely wired windows seemed to show that the street regarded it as an intruder. A few larrikins at the corner, and rough habitues of the neighbouring pubs said to be certain to come from this st. or from Newberry Mews (see later). From d.b. to d.o. barred.

Shipton Place, to the S.E. "very quiet"; 6 2 st. cottages on the S. side, with the entrance to the mission room ~~xxxxxxx~~ S. Silas barred by Preston St. at the end, purple rather than pk. as m

Note: In Preston, Marsden and other streets I noticed ventilating shafts fixed often under the ground-floor windows. They are constructed for a down draught, with talc flaps. But the flaps were generally out of order, and air could thus pass up or down. It seemed an insanitary arrangement, needing attention.

S. of Preston St. leading out of Prince of Wales' Rd. are

*Shipton Place - hush*

two short cul-de-sacs; quiet decent little places:  
Palace St: 2 st.; with one or two l.b. houses but remaining p  
Crown Place: just the same, and also pk. as map.  
 Back up Malden Road, on the right is  
Newberry Mews: with a few very poor dwellings over the stable  
 wood-chopping, etc. "As bad as Preston St." poverty probably  
 more unrelieved; a hole and corner sort of place that  
 ought to be cleared out. Leave d.b. No brethels. N. is  
S. Leonard's Sq. a roomy spot; 3 st. houses on three sides;  
 "rather rough at times", but a mixed-up set of people living  
 in it; saw several very tidy and clean children, and some of  
 the houses spick and span.. From l.b. to purple. By  
Marsden St. (East) 2½ st.; dirty children about; leave pple; to  
Weedington Road: a street with a "rough" reputation, but im-  
 proved. S. of Wilkin St. on E. side, and of Marsden St. on W.  
 side, with houses of 3 and 2½ st. from purple to pk. N.  
 of these points, the purple remains, and the l.b. goes to  
 purple. N. of Warden Rd. the houses are uniform, stucco, with  
 porticoed entrances -- seen by a half-light and it might be a  
 a strret in Bayswater. The improvement appears to be mainly  
 due to painting and renewals, many of the houses having  
 been thoroughly done up. Others remain shabby with the  
 stucco peeling off in a bankrupt sort of way. A similar im-  
 provement is noticeable in the part N. of Queen's Crescent,

*S. Leonard's Square - purple*

*Weedington Rd. S of Ryell + Salcham Sts } pk }  
rest } hur }*

with the same sort of houses on the E. side only.

Rhyll St. (E. end): has much improved. Houses 3 st.; Now better than E. end of Marsden St. The worst houses were on S. side, and have been taken down for the extension of the Beard School. From purple to pink.

Note: Saw a good many of the girls and infants and some of the boys leaving this school; saw none unshod; very few ragged; none ophthalmic; and did not detect signs of pinched and hungry faces. Children at school are generally above home standard, but level here surprisingly high.

Warden Road (W. end): 3 and 2½ st.; pink as map. From there to Queen's Crescent: and W. along the principal market portion: shops and costers; busy; fish, green-grocery, clothes etc.; remains pk-barred as map. Back and S. down

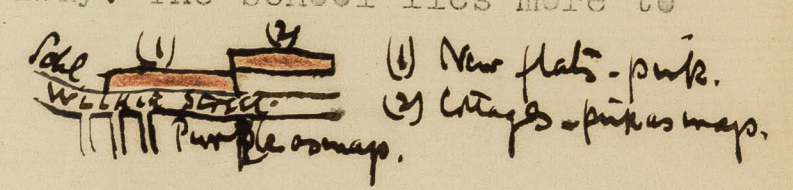
Allcroft Road: (Langford on map) 2½ and 3 st.; pk as map. Up Bassett St. 3 st.; remains pk. as map. Recrossed Weedington R Carlton Street: (southern bit) 3 st.; a poor street; remains purple. Probably nearly all the houses in this n'hood are from 30 to 50 years old, but they are very rarely dated. A small terrace in Carlton St. was built in 1957.

Carlton Road: from Queen's Crescent S. is better than C. St. 3 and 2 st. houses; remains pk as map. Near its S. end is

Litcham St: a straight, short, broad st.; 5 st. houses; broken windows; most doors open; untidy and dirty rather than ragged children; women often slatternly, but not many about.

(6)

The st. has a rough drinking and fighting reputation ~~xxxx~~  
~~aximinal~~ rather than a criminal one, and, as stated, Tomkin  
 gave it a better name than Preston St. Remains d.b. as map.  
Wilkin St has been altered by the erection of 8 or 10 2 st.  
 working-class ~~xxxxxx~~ flats, W. of the pink cottages shown in  
 map. The latter stand back and have gardens in front; the  
 former are flush with the roadway. The School lies more to  
 the W. Colour to plan.



Tovey Place at the S.W. corner: paved and no thoroughfare;  
 2 st.; houses been "touched up"; from purple to pk. except  
 Nos. 32 and 34 tucked away at S. end, which remain d.b. as map.

Dickinson St. to the E.: 3 st. houses; somewhat better, but  
 still purple. E. into

Dalby St.: 3 st.; very much like Dickinson St.; rather rough;  
 2 or 3 prostitutes living here; some of the houses much im-  
 proved, but still purple. E. of the railway is

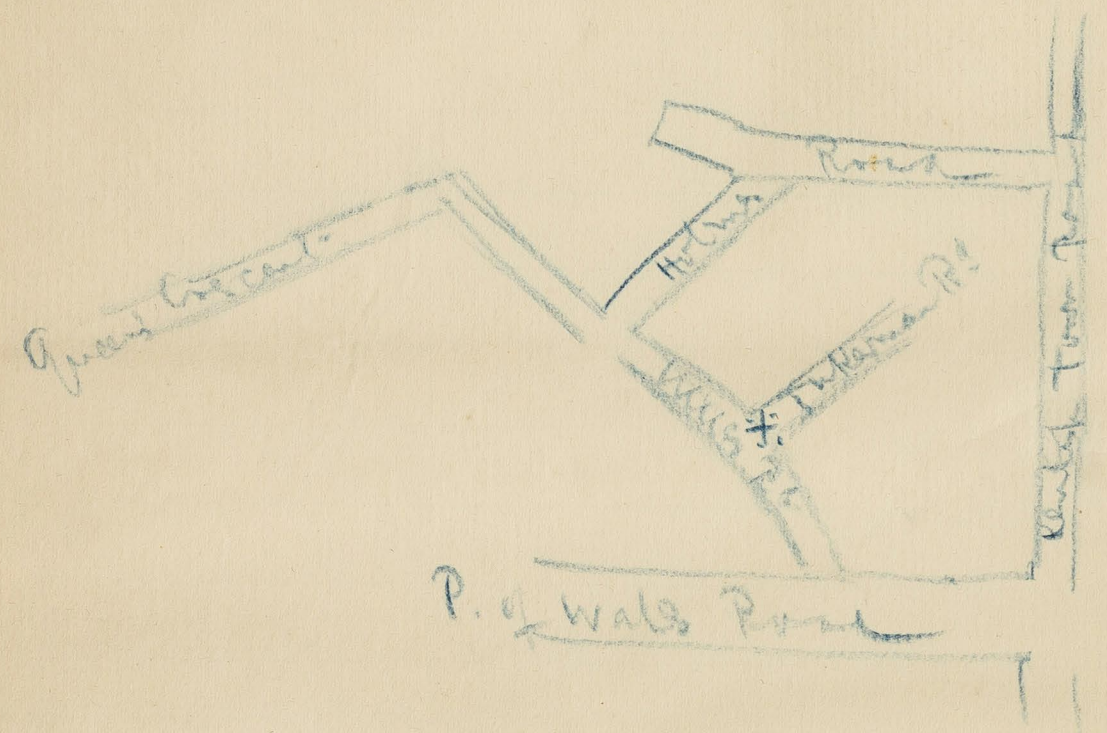
Ryland Rd.: quiet, respectable; well-built houses letting  
 from £32 to £34 plus rates; 2 storeys; largely occupied by  
 Brinsmeads' employees. Remains pk. as map.

Graxton Rd.: 2 st. house; a few shops at N.E. corner; ~~working-dorm.~~  
 a few houses clearly on the down-grade, but the Road remains pink  
 on the whole.



(5)

District 19.



Part of S. Barnabas Parish.

\* Starting point.

Notes of a short and rainy walk with Tomkin, on Nov. 2  
(For area covered, see plan.) <sup>19</sup>/<sub>8</sub>

Starting from the P. of Wales' Rd. up Grafton Rd. down Inkerman Road: 2 and 2½ st. houses; "roughish, some of them" 2 or 3 prostitutes living in the basements of two houses on N. side S.W. of Cathcart St. but no brothels: the women widows, with families, who ply their trade away to eke out earnings. The st. as a whole decent, and remains pink.

Willes Rd. (lower part): 2 and 3 st. semi-detached; well-built better-class; "apartment" notices in some windows. From red to pk. barred. Back into the P. of Wales' Rd. E. passing the S. Pancras Reform Club, a neglected looking place; "not much doing; carried on very quietly". N. up Kentish Town Road, passing at No. 189 (four doors from P. of Wales Rd.) a small Bedega: wines by bottle etc. and glass -- the latter form of trade conspicuously advertised in the window "sherry" from 2d. to 6d. per glass; port from 3d. Inside biscuits, sponge cakes, pastry, but no groceries. Said to be used by tradesmen, ladies shopping etc. S.W. down Anglers Lane: large teeth factory; remains pk. as map. The shd be a small pk. spot east of the factory. same side, for 2 small 2 st. cottages. N.W. up Alma St.: 2 st. houses; "very decent indeed; 2 families to a house generally." Remains pk. as map. Into Reglan St. (lying N.W.) 2 st. houses; "not so good as Alma

pk b<sup>o</sup>

*Brown Place Cottages to N - purp.*

*Willes Road - N. bit pk.*

(2)

St. but still pk and purple as map. Into  
Brown Place: (N.E.) 2 st. cottages; these to the S. still  
l.b. as map. Two or three of the outhouses, ~~XXXXXXXXXX~~ flited  
up as queer little one-room demiciles. The cottages to the  
N. with little gardens, from l.b. to purple.

Raglan Place: 2 st. houses, remains purple, and  
Spring Row, to the N., with 3½ and 2 st. houses on the E. si  
also keeps its colour -- purple. Reported "not so good as  
it might be, but better than of old".

Holmes Road: mainly 3 and 3½ st. houses; S. side considerab  
ly improved, especially E. end where there is a row of new  
houses opposite the Police Station. New Casual Ward lower de  
. This side from purple to pk. The N. side remains purple.

A row of 3 st. houses round the corner (S) on E. side impr  
ed, and goes from purple to pk. From there S.E. down  
Cathcart St.: 3 st. houses on the N. and 2 st. on the S. Th  
latter shortened by extension of school, but still all ~~pk~~  
purple. Up the N. part of

Willes Road: 3 st. houses; many done up, and tenants of a  
better class have come in as far as the bend of the road. Up  
to this point from purple to pk. Then purple still on S.W.  
side. On the other side no houses now: extension of school;  
public house at corner. (see plan)



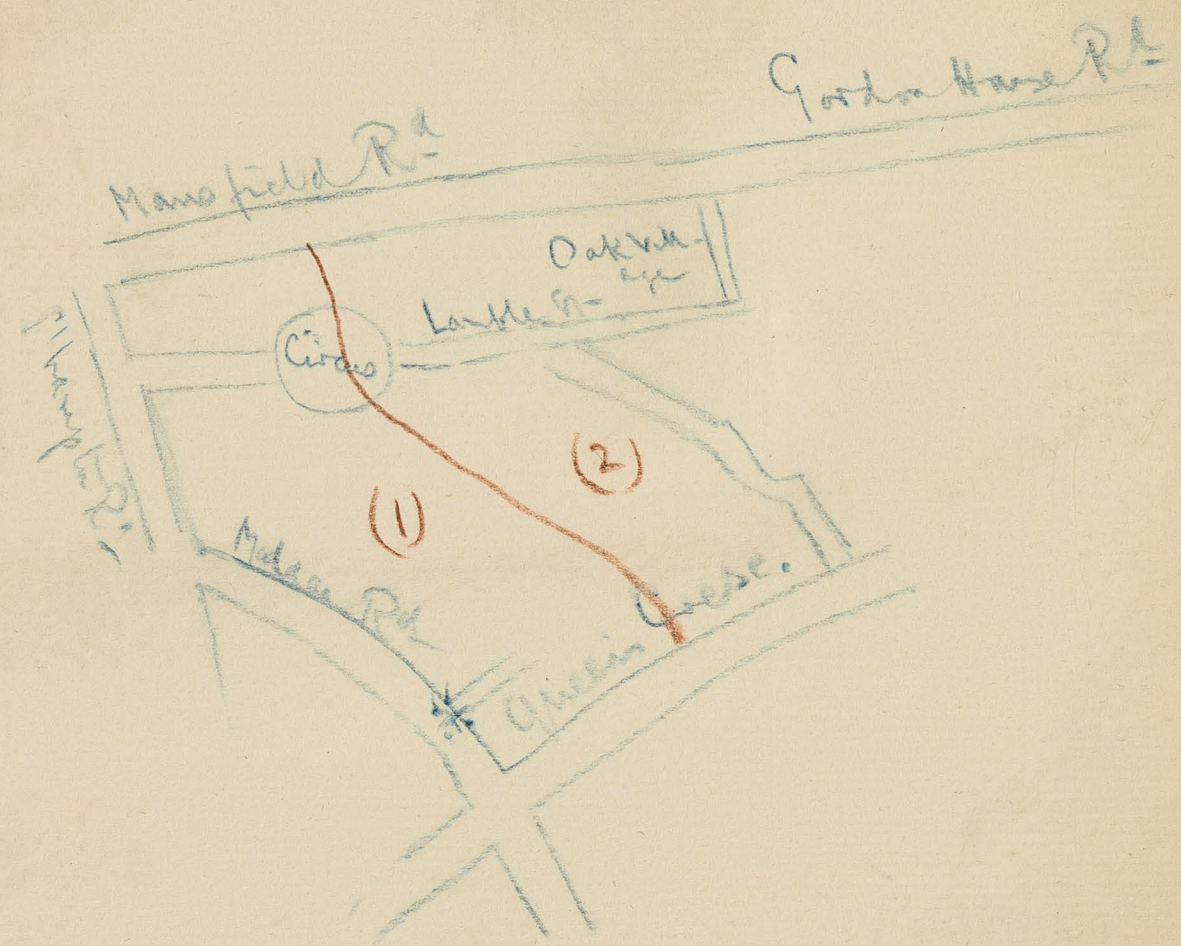
Queen's Crescent E of Carlton Rd lb

Spring Place : a northern continuation of Willes Road; the purple patch should be much shorter; it represents only 2 2 st. cottages. At the N.E. corner is

Franklin Street: 6 three st. houses; on N. side only; a cul de sac, but broad; Midland property; their employees the chief occupants; improved. Pk. as map.

Gillies St: 3 st. houses; let out by floors; 8/-; respectable pk. as map. At the N. end is the small bit of ~~XXXXXXXXXX~~ Queen's Crescent, lying E. of Carlton Road. Not coloured on map. 2 poor looking 2 1/2 and 3 st. houses on each side. If coloured should be l.b. No market here.

District 9.



- (1) Part of S. Andrew Parish.
- (2) ——— Martin's Parish.

\* Starting point

Notes of a walk with Inspector Tomkin, on Nov 7.98.  
For area covered see plan.

Starting up Malden Road, turned N.E. up Grafton ~~Terrace~~ (N.E. end): 3 st.; bow windows; let by fle working-class; from l.b. to purple, like the rest of the ~~Tar~~ Wellesley Road: 3 st. houses; working-class; improved, indeed "Kentish Town nothing like so rough as it was ten years ago", and this st. one of the many that reflect the change. From purple to ~~ix~~ pk. except 5 3st. houses on N. side, W. of Wellesley Place.

Wellesley Place: mainly 3 1/2 sh. houses; from l.b. to pk. except two l.b. houses at S.E. corner. North into Oakfield Crescent: 3 st. houses, and others of miscellaneous styles; working-class mainly; a well-to-do house occupied by a builder. From purple to pk.

Haverstock Road: 3 st. houses; working-class; 2 or 3 shops; character very much like Wellesley Road, and pink of low grade. Into Rochford St. by

Gospel Oak Grove: 3 st. houses; working-class; rather poorer than Wellesley Road; children well-clad and shod; fairly clean; from l.b. to purple. Down Rochford St. by Southampton Rd. to Piercefield St. (E.) 3 st. houses; "rather rough"; the same type of child as in Gospel Oak Grove. Purple as map. Back up Rochford St. 2 1/2 and 3 st. houses; a good many shops at W. end.

purp

db+pk

purp

(2) 51  
children looked a bit below the local average. Remains purple.  
Gospel Oak Grove (N. of Rochford Rd.) Only 5 or 6 scattered cottages. If coloured at all, a l.b. touch at N.E. corner, and a purple touch on either side of the S. end.

Southampton Rd. (N. of Malden Rd.): Houses on E. side; mainly 3 st.; only two or three shops; pink. E. along  
Mansfield Road, as far as Heriot Pl.: Good street; "very respectable"; the best end; shops on S. side; Pk. barred. Down  
Heriot Pl.: 3 and 2 st. houses; best on W. side. pk-br'd. N.W. up  
Lismore Road: mainly 3 st. houses; a few shops; "gives little trouble"; respectable. From purple to pk. on N. side up to opposite Gospel Oak Grove, and  $\frac{3}{4}$  of the same line on the S. side from the E. end. The rest of the st. purple as map.. Back to

Lismore Crescent: fairly respectable; mainly 2 or 2½ st. h houses; from purple to pk. Out of the Circus S.E. down  
Allcroft Road: mainly 3 st. houses; working-class. Pk, as map.  
Ashdown Street: like Allcroft Road; 3 st. houses; Pk.

Weedington Road: (N. end): 3 st. houses, on E. side only; "very thickly populated"; no broken windows or open doors; said to be the worst part, but really like the lower part. From l.b. to purple.

Carlton St. (N. end): 3 st. houses; purple as map.

Carlton Road: (N. of Queen's Crescent): 3 st. houses; some on the down grade, but still pk. as map. North of railway, 3 st. houses on W. side only, also still pk. as map.

*Heriot's Place - purple*

*Lismore Circus - pk*

*Weedington Road. N of Queen's Crescent. pur*

(3)

Hanover St: (W.), 3 st. houses; "rather rough"; but given "little trouble"; Not so good as Carlton Road. Remains purple, as map. Parallel on the N. is

Dale Road: 3 st. houses, bew windows; better working-class; "quite respectable". Pink. Still further N. is

Vicar Road: 3 st. houses; very much like Dale Road, but not quite so high a grade of pk. From purple to pk. N. by L. Ci

Elaine Grove: 2 st. houses; decent w-class; 2 families to a house generally; rents about 17/-. Pk. as map. S. into

Julia St. houses on W. side only. Pink. N. into

Mansfield Road (E. of Heriot's Place): Newer 3 st. houses and shops N. side: pk barred. 2½ and 3 st. houses on S. Pk

Oak Village: (E) 2 st. houses; very much like Elaine Grove; many Midland men living here. Many of the houses at E. end detached or semi-detached. Pink, throughout. S. W. along

Lamble St. 2 st. houses; no houses E. of Julia St. colour goes out there from map. "Rather rough". Purple as map.

Lismore Gardens on S. side, pulled down 2 years ago, by owners -- Midland Railway. Along the E. continuation of Mansfield Road, passing under N.L. Railway arches, to

Gordon Houses Road: A long row of new houses on S. side on 2 st. with attics; occupied by clerks etc. Pink-barred.

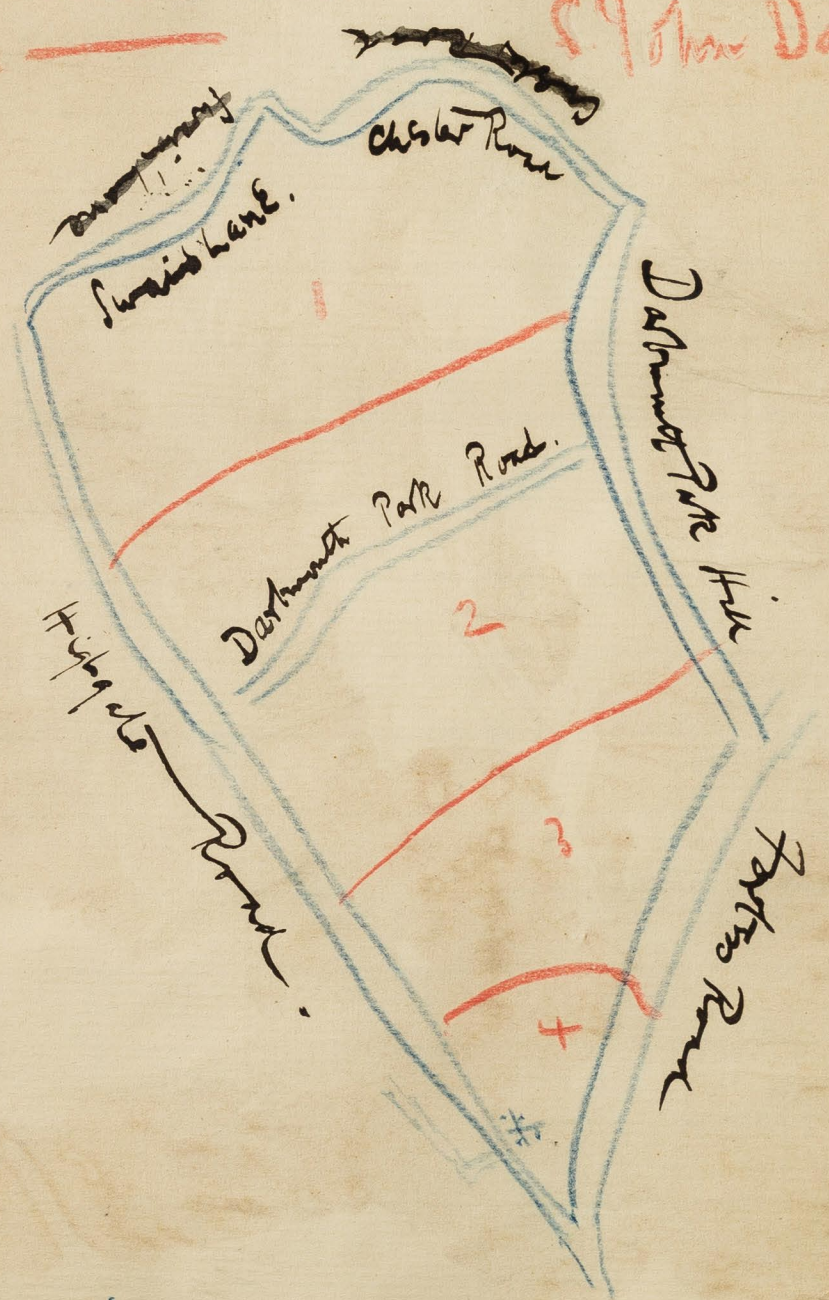
Gordon House at N.E. corner.

*Vicar(?) Road - pk*

*Gordon House Road - S side }  
pk*

District 19

- 1) Park of St. Anne, H'gate
- 2) S. Mary, Brompton
- 3) S. Daniel
- 4) S. John Baptist



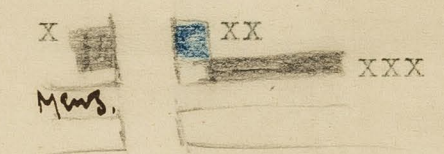
# Seating point.

Notes of a walk with Inspector Tomkin, completing the Kentish Town Sub-Division. For area covered see plan. (E.A.) Nov. 8. 98.

Police 19  
10

Starting up the Highgate Road, passed the Bull and Gate, an ancient land-mark in this modern district: built 1541, re-built 1871. Nearly opposite, on the E. side of the road is the first police station of the district. At that time, in the forties, there were two cells, and 12 police; now there are 150 of the latter. Turned W. into Greenwood Place: only two or three purple houses, (see plan) will be left. All the rest coming down. In hands of Midland Railway.

all }  
16 }



x: two or three cottages; purple.  
xx: two or three ramshackle cottages; l.b.  
xxx: 5 or 6 3 st. houses; purple.

Read's Place: no houses; Read's Brewery close by. Twelve houses fronting the H'gate Rd. down here. Uncertain at present what will be put up in their place. In Carter's Lane, (W. of the H. Rd.) only one house, occupied by Read's foreman. Pink. Re-crossed Highgate Rd. (E) to College Lane: Mews at this point; 8 or 9 abodes; costers etc. not coloured on map. Purple. Back into H'gate Rd. 2 past the Vine Inn: two light blue cottages on left, and two purple ones on the right, the latter picturesque and rural.

College Lane: S end: lb mews  
Vine Inn & Cottages left & right - purple

Little Green Street - pk & lb

Highgate Road { to Gordon House R<sup>d</sup> pk<sup>2</sup>  
rest pk and red

(2)

College Lane again: a long narrow way; houses new and old on W. side only; 2 and 3 st. Purple as map.

Carroll Place: (W. side of H. Road) has been nearly all pulled down by the Midland; only one l.b. cottage left, and this supposed to be doomed.

Little Green St. (E. side of H. Rd.) with 8 old-fashioned cottages; 2 st. and 2 plus attics; round projecting windows; small panes of glass; quaint; been done up; decent. Pink. These on N. side. On the S. are 2 or 3 more modern but much worse houses; 2 and 3 st.; light blue.

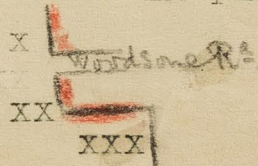
Wesleyan Place: (W. side of H. Rd.) 2 st. houses; stucco; small verandahs to first floor windows; on N. side. On S. only 2 or 3 houses. All quiet working-class. Pink, as map.

Round the corner left, and facing W. is

Mortimer Terrace: a short row of good 4½ st. houses, surprisingly tucked away. Mainly occupied by Midland employees; quite respectable. Pink, as map. Up

Highgate Road: as far as Gordon House Road, shops and houses etc. Pink-barred. Above Gordon House Road, as far as Swain's Lane, ~~xxx~~, mainly good residential houses; red, except a few houses N. and S. of Woodsome Road, as marked in plan:

- x: N. of the corner house, a pub., are 3
- 3 st. houses: pk. barred.
- xx: shops; 4 st.; pk. barred.
- xxx: a short row of houses, 3 and 3½ st.; not on map; working-class; pink.





S. Alban's Road - yellow

Block opposite Swain's Lane pk b<sup>d</sup>

Swain's Lane: houses at SW corner - red

Holly Village red

Chester R<sup>d</sup>: N side pk: S side pk to gardens then }  
red }

Croftdown Road: N. of Woodsome Rd, 3½ st. houses; red-brick, not well built, but at present well occupied; the line as shown on map continued to end of road on S. side. Red. On N. side two houses only: also red. Further N. is

SS. Alban's Road: a cul de sac, leading to the Brockfield Stud. Six houses on S. side, detached and semi-detached, some of them ~~xxxx~~ fair size. On N. side, two houses, large, semi-detached. The road red or yellow.

In Highgate Road, opposite Swain's Lane, a short row of shops and flats; 2 years old; two or three still building; 4 st., good. Pink-barred. Down

Swain's Lane: passed the end of Bromwich's Walk, leading up to Highgate; said to be rather a queer place, for boys and girls in the evening. Houses on map, S. side, near W. end, red.

Skirted

Holly Village: ornate detached and semi-detached houses built by Lady Burdett Coutts; some apparently occupied by Couttsian retainers, and others let out in the ordinary way. Rather picturesque, and must be pretty in summer; lots of room and grass. Red. Along

Chester Road: 2 and 3 st. houses, mostly the latter. Very respectable; better the E. end, and newer. Here, on S. side,

Bramshill Gardens - red

York Rise: N. of Lewisham Road - pk b<sup>o</sup>

(4)

houses have been carried to end, since the map was made, and a new street, <sup>Bramshill</sup> Bramshill (?) Gardens, constructed. See plan. These new houses, and the Gardens should be red, as marked. The N. side of the st. E. of the Gardens, should be pk-barred, and on both sides W. of them, pink.



Bertram St.: short broad working-class st.; st. houses; a cul de sac; broken windows w/ -uncommon. purple.

Winscombe St.: structurally a duplicate of Bertram St. Little li those houses than broadly. A mixture of rep + original; the former preponderating. purple.

Bramshill (?) Gardens: the new street mentioned above coloured red, as shown in the plan.

Dartmouth Park Hill: (W. side), elder houses, but still good residential, mainly in the hands of single occupants; different sizes and styles; remains red to Chetwynd Road. At the corner, S. of Chetwynd Road, is Somerset House, let out in 2 and 3 room tenements; rather poor, and its presence just at this point a little difficult to understand. Mark purple. Then, down to Churchill Road, pink-barred.

Dartmouth Park Avenue: good houses; ~~XXXXXXXXXX~~ 3, 3½, and 2 plus attics. Mostly semi-detached. Red. Its continuation,

Lewisham Road: new entirely built over. N.E. end, to York Rise, new semi-detached small villas; ~~XXXXXXXXXX~~. Below York Rise, elder, good 3½ st. houses. The whole road red.

York Rise (N. of Lewisham Rd): Nearly new 3 st. badly built

Woodsome Road pk b<sup>2</sup>

Dartmouth Park Road - red

Chetwynd Road - pk b<sup>2</sup>

Twisden Road - pk

Spencer R<sup>d</sup> : all pk

(5)

houses on N. side, to just beyond Woodsome Road. Occupied by clerks etc. Pk. barred.

Woodsome Road: 3½, 2½, and 3 st. houses. Many letting "apartments". From red to pk. barred. S. out of Woodsome Rd. is Bescastle Road (Grove Rd. in map): 3 and 3½ st. houses, better and bigger than Woodsome Road. Remains red as map.

Dartmouth Park Road: W. of York Rise: 3 and 3½ st. houses, large; very occasional "apartment" notices, and still red. E. of York Rise, detached villas, continued on N. side to end now. Red. Lower end of York Rise: pink, as map. Bisecting it is Chetwynd Road: mainly 3 st. houses, respectably occupied. Four or five shops on either side just below York Rise. The houses badly built throughout; soft bricks. Tomkin lived in one of the smaller ones; complained of sanitation etc. From red to pk. barred. To the S.E. is Twisden Road: mainly 2 st. gabled little houses; "apartment" notices occasionally, but the st. mainly occupied by good working-class: police, railway men etc. The houses badly built again. The road pink of a high grade, including the W. end of S. side, not shown as built over on map. To the N. Spencer Road: Lower part 3 st. houses; the worst bit. This comprises perhaps one-sixth of the Road, and should be purple. Higher up, 2 st. houses, and pink. In reply to question

Dartmouth Park Hill } Chetwynd to Churchill pur & pk<sup>2</sup>  
S of Railway at E side purple }

Lady Somerset Road pk<sup>2</sup>

Oakford Road - pk

Burghley R<sup>d</sup> parts of N & S sides pk<sup>2</sup>

(6)

as to how it compared with Twisden Rd. Tenkin replied that <sup>latter</sup> ~~the~~ was "rather better", and that "two or three houses at the bottom of Spencer Rd. rather spoiled it". To the S. is Churchill Road, a respectable street of higher grade pink, as facing the railway, and houses therefore on N. side only.

Across the railway is

Ingestre Road: 3 and 3½ st. houses, looking across the railway to those of Churchill Road, and on S. side only. Very much the same character as Churchill Rd. Pink as map.

Dartmouth Park Hill Road, S. of Railway: shops on each side; W. much better than E. On the latter a very shoddy row of buildings under much needed repair. The "Boston" is rebuilding. Colour pk. barred on W., and purple on E side.

Near the Boston, is the Stanley Hall, in Junction Rd. licensed for billiards only. Down Fortess Rd. on W. side is

Lady Somerset Road: mainly 3 and 3½ st. houses; some semi-detached at W. end; the Road not so good below Burghley Rd, but all from red to pk. barred out of it N.E. is

Oakford Road: mainly 3 st. houses; none in single hands; clerks, better class of artisans etc. From red to pk. barred.

Burghley Road: much of the same class as Lady Somerset; 3 st. 2 st. plus attics etc.; the sides differ in character but in reverse ways W. and E. of <sup>Lady Somerset R<sup>d</sup></sup> ~~Burghley~~ Rd. W. end remains red on N. side, and E. end red on S. side. The other sides

*S. John the Evangelist Road - pk*

(7)  
go from red to pk. barred. Somewhat of the same character  
as Oakford Road, is  
S. John the Evangelist Road: 3 st. houses; goes also from  
red to pk. barred.

District 19.



Kentish Town Sub-Division Boundaries.

General Remarks:

The police survey strongly corroborates the remark made by Mr. Cowd, that Kentish Town is "going both up and down". While the well-to-do middle class is tending to move further out of London, the poorer parts, with the exceptions of places like Litcham St. & Prston St. which seem to be the local rubbish heaps for the degraded minority, appear to be less poor. But perhaps the whole area may be divided into three, for the purposes of comparison: (1) that lying S. of Mansfield Road, and W. of Great College St. and the Kentish Town Road. Apart from a few main thoroughfares which form the business and shopping centres, almost the whole of this area is working-class. It is in this part that almost all the poverty of the district is found, but even here poverty remains the occasional, and not the prevailing characteristic. Streets, evidently intended for working-class occupancy from the beginning are common, and, while numerous streets of 3 or 3½ storied houses are found, they are not the prevailing style, as is the case E. of the Kentish Town Rd, and Great College St. (2) is the whole of the district S. of Dartmouth Park Road, and E. of Highgate Road, Kentish Town Road and Great College St. Here we have street after street of large houses, rows generally of 3 to 4 storied buildings, evidently intended for the occupancy of a well-to-do middle class, rapidly turning into a well-to-do working-class area.

(2)

It is becoming Midland rather than Middle-class, for the railway is the great local influence, a point that is equally true of the part of the district lying W. of the Kentish Town Road. It is <sup>declining character of better streets</sup> this second area, however, that the ~~area~~ can be more easily traced. The decade has witnessed it, and while the external aspect of the neighbourhood has probably changed but slightly, "more people and less money per family" is a saying that indicates what has been going on.

Almost the whole of these two areas (1) and (2) are the <sup>the</sup> ~~creation~~ <sup>erection</sup> of the last forty years, and practically all had been built over, 20 years ago. Few of the roads are narrow or tortuous; courts and out of the way corners are the exception. Clearances are therefore not <sup>needed</sup>. The district gains in this from its modernness. But there has been plenty of time for many of the houses to get into disrepair, and sometimes a general shabbiness prevails. Things are rarely bad enough to call for Vestry interference, unless bad sanitation be concealed by decent exteriors. But, be this as it may, and walking with the police does not throw much light on this point, the <sup>absence of any signs of the activity of</sup> the local authorities is impressed upon the mind: perhaps the time has not <sup>yet</sup> come when this is really needed. On the other hand the activity of landlords is noticeable. They have responded to the demands of a local standard that is rising

A respectable working-class is creating an increasingly strong local demand, and there are signs that it is being met. "Kentish Town is not half as rough as it was ten years ago", and the <sup>wide</sup> houses are <sup>cup</sup> along with the inhabitants. Meanwhile the quondam middle-class streets are as a rule not old enough to have got shabby. While in Ascham, Countess and several other Roads, the working-class floor by floor occupancy is the prevailing type, the transition time from the single occupier stage to that of subletting in unfurnished holdings to working-class families, namely, the furnished apartment stage, is very common, and is the prevailing type in many of the streets N. and S. of Gaisford St.

(3) is the small portion of the Subdivision lying N. of Chetwynd Road. Here we have the Kentish Town of an earlier decade, as it were, in the making. Most of the district is now built over, it is true, but the process is still going on. There are many semi-detached ~~xi~~ villas; single occupiers to the house are the commonest type, and, save for part of Chester Road and the two short streets that run out from it on the S., there is hardly a working-class street in the district. This portion of our district abuts on the N.E., the squalid Colva St. district, but this itself lies in the Hampstead Sub-Division. It is noticeable that its structural characteristic of scandalous shoddiness in building is found



(4)

albeit in somewhat less glaring forms, in this N.E. portion of the Kentish Town Sub-division. The worst examples lie S. of the Dartmouth Park Road, the dividing line of prevailing middle-class respectability, in Chetwynd Road and Twisden Road, but some almost new houses in York Rise are thoroughly bad in construction. On the other hand the new houses in Chester Road appeared to be of good style enough.

In the whole of the Sub-division there are only two blocks of model dwellings -- those in Great College St. and Clarence Road, and there only two Common Lodging Houses, both for men. Public Houses are not crowded in any part, and are generally ~~not with~~ <sup>found to be</sup> solid erections that impress you with the sense that they are playing a useful part in the economy of their districts, and that looked as a rule as respectable as a mission-house or a Board School. I never elicited a bad character of any house from my Inspector, the worst that I ever got being that it was "rather rough", and once, in the Prince of Wales Rd. that the house was "not as quiet as it might be". But as a rule, when roughness was charged, the additional comment came that it had improved, the "roughness" of the house too, being understood to be almost always the character of its customers. On the whole public house management may be said to have been given an almost clear bill, and I saw nothing to make me think that

it was undeserved -- very few customers, no brawling, hardly ever even a group loafing round the doorways. On the whole, although in decent streets, with all the doors closed and curtains at every working-class window, one had a glimpse of something -- a woman leaving a house shawl-clad and careworn or a little child not too well cared for, that made one fear that appearances might be deceptive and that clean and garnished windows might not infrequently hide want and suffering, the general character is undeniably one of respectability, and, on the whole, of comfortable living. The remark made not infrequently of individual streets that they "gave little or no trouble" is, with very few exceptions, true of the Sub-division as a whole. In walking round, little was to be seen, as a rule, save the houses themselves. but perhaps the negative signs of well-being are as eloquent as the positive signs of poverty. It was thus the exception to see women gossiping, bare-armed and frowsy headed, at their own or other people's doorways; dirty children playing in bread-strown and littered gutters; groups of larrikins at street corners and loafers round the pubs; it was the exception indeed to see many people of any kind, and, even in the few very poor streets they did not throng the place. I saw no fighting or brawling; no drunken woman; only two drunken men (one asleep on the pavement in Weedington Rd.

(6)

and a second reeling down Rayden St. and clearly coming from the bad nest of streets just outside the sub-division); and only one bare-footed child, a boy of 12 or 13 in Haverstock St. off Ferdinand St.

District 19.

19  
—  
12

Notes of a short walk on Sunday, Nov. 27.98. between one and two in the afternoon. (E.A.)

Many of the streets had been so deserted when going ~~re~~ round with the police, that there appeared to be a possibility that ~~the~~ a Sunday morning might usefully supplement the impressions of a week-day, ~~was so~~. In one or two cases ~~they did~~ <sup>was so</sup> this, but as a rule there was but little more life than on the days when children are supposed to be at school and the men at work. What there was to be seen corroborated both the police information and the week-day colouring.

Turning out of the Chalk Farm Road, I went up Ferdinand Place, and found it strangely empty. A small group of boys of 13 or 14 were trying to bring on a fight between two of their number, but there was nothing ragged about them except their morals. They looked respectable, and still more so did a few other children (girls) that I passed further up the Ex Place. A "purple" impression was strengthened, and the only alternative would, I think, be pink. In Pewlett Place there was nothing to be seen, save a small group of little girls of somewhat indeterminate colour. Up Harwood St. as deserted as on a week-day, and along "Prince of Wales" Road, I went

(22)

(2)

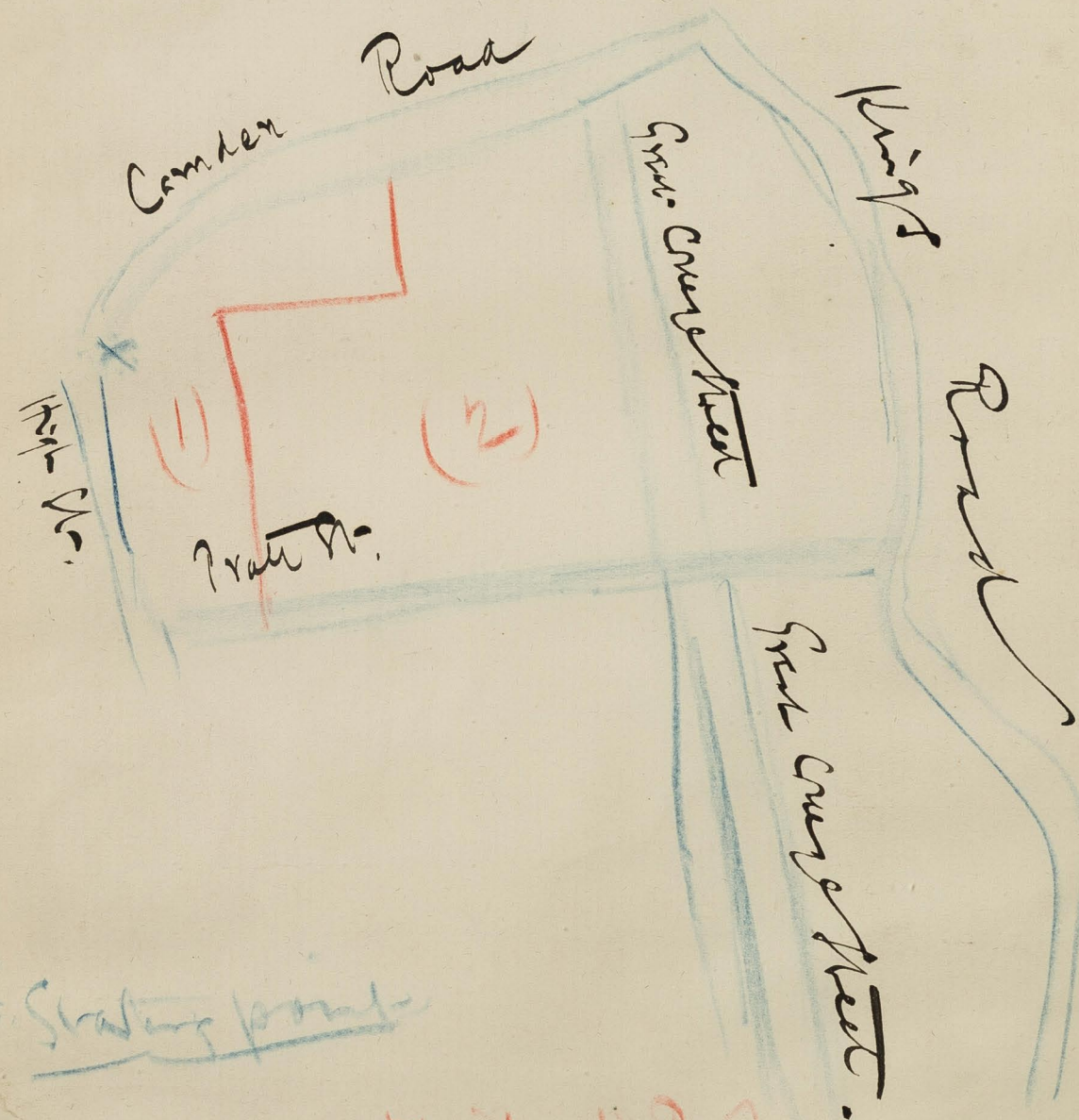
up Grafton Road, in which I think I saw three people! In Litcham Street I got my first real signs of life: a ragged girl of 14 or so running to the public house for beer, her untidy oversized boots making their wonted slippity sloppity noise along the pavement; a group of dirty youngsters playing on the kerb and finding fine sport just as I came up in a little "pink" girl who had inadvertently strayed into this street and was leading a dog: here was fine sport, but nothing worse than a little frightening both for dog and mistress resulted; two or three farouche men standing at their doors <sup>or looking from their windows</sup> wondering when it would be worth while starting for the public house; a few women also standing at their own doors or at their windows busy in neglecting their homes and thinking of their drinks to come on the Monday; and, redeeming feature of all, a woman of perhaps 30 or so, ~~was~~, hurrying home with a dinner from the baker's. At least one family in Litcham St. was going to dine royally off a substantial joint of roast mutton and baked potatoes galore. The woman looked proud, and, I am afraid, the neighbours envious. The beer-house at the corner had a fair number of customers, and the public-house in Weedington Road was crowded. All that I had passed had had some customers in, but this was the first from which a noisy hum of voices reached the street. In Weedington

(3)

Road, where I had expected to find many children, very few people of any age were to be seen. There were a few children and young girls however, and again, as in Ferdinand Place, the "purple" impression was confirmed. From there by Rhyl and Marsden Streets, I turned into Preston Street. Here, too, I found very few people, almost the only adults being two men, of shady expression but not ragged appearance. There was a group of larrikins, probably of the "snatch and run" type mentioned by Inspector Tomkin, but hardly any little children. There were just a few girls, at one door an obviously "pink" ~~XXXXXXXXXX~~ child of 15 well-dressed and brazen, and next door a "light-blue" Cinderella. In spite of the great poverty of some of the houses, especially at the E. end, I am inclined to colour this street purple, black-barred.

In Prince of Wales' Road, at the Mother Shipton, I passed the only public-house, other than the one in the Weedington Road, that I had seen full. But neither here nor anywhere else was there any approach to disorder. A feature in most of the streets had been the messengers to the pubs. mostly children, going for the dinner beer. I only noticed one man, thoroughly well-dressed and of perfectly respectable appearance. All the people that I noticed drinking in the pubs. were men.

District 18.



- (1) Part of S<sup>t</sup> Michael's Par<sup>ish</sup>  
 (2) — S<sup>t</sup> Stephens —

Notes of a walk with <sup>Police</sup> Inspector Bowles, of the Somers' Town Police Sub-division, in the area bounded by Camden Rd. on the N.; King's Rd. on the E.; Pratt St. on the S., and the High St. on the W., forming part of the parishes of S<sup>t</sup> Michael & S<sup>t</sup> Stephens.

(E.A.) Nov. 14.98.

Starting from the Mother Red Cap, by Hamilton St. down Greenland Place, (S) called York Place on map, has now no dwellings in it; on one side, instead, the backs of the Bayham St. houses, and on the other warehouses etc. connected with High St. shops. Below it is

Greenland Street: with the new Mission Room of S. Michael's on the N. built 4 or 5 years ago. Colour goes out, therefore, on this side. On the S. small 2 st. houses; 2 or 3 shops; still poor, and remains l.b. E. of it is Bayham St.: mainly ~~3~~ 3 st. houses, with the Alms' Houses of S. Martin's in the Fields on the E. The colour on the W side S. of Greenland St. is now broken by a large warehouse, but for the rest the st. remains pink as map. The Alms' Houses are dated 1817. Into

Pratt St.: 3 and 3½ st. houses; many shops ~~at~~ at W. end and others scattered. On N. side the S. Pancras Liberal Club, and behind it the Recreation Ground, opened about '89. A

catchment at still pink

Caroline St - purp.

Camden Rd } S side from W end } pk b<sup>o</sup>  
to King's Road }

(2)

respectable street, and still pink, as map. N. up  
Camden St.: a good broad st.; on E. side church and schools;  
a mixture now of working and middle class, the whole  
"something better than Pratt St." remains pk-barred as map.  
S. Martin's Place, on the left, a cul-de-sac; 3 st. houses  
"quite respectable"; police etc. living here; Pink as map.  
Caroline Street: 3 st. houses again, and although marked  
l.b. much the same sort of place. Not a cul de sac, and "one  
of our quietest streets"; Only one or two l.b. houses; doors  
shut, and nearly every doorstep clean. From l.b. to pink.  
Hamilton St. looked a better class st. and is "a shade high-  
er than Pratt St.", but is working-class and pink as map.  
The houses are  $3\frac{1}{2}$  storeyed. N. into  
Camden Road, which here and on the S. side has gone down.  
As far as the King's Road, mainly shops, and the rule for  
the houses to be sublet, or to have ledgers in. Some quite  
poor people sometimes found here. From red to pk-barred.  
Lyme St.: 3 and  $2\frac{1}{2}$  st. houses; some semi-detached; W. side  
the better, and some houses in hands of single occupants;  
Brooks' Factory (pianos) on the W.; from pk. to pk-bar'd.  
Georgiana St.: W. of Gt. College St, mainly  $3\frac{1}{2}$  st. houses;  
let by 2 and 3 rooms, at from 6/6 to 9/- a week; "decent"  
here pink, as map. E. of G. Coll. St. small  $2\frac{1}{2}$  st. cottage



*Kings Road - E side S of S. Pauls Road - pk & db*

(3)

and poorer. From pink to purple.

Great College St.: 3 st. houses; shops etc. At the angle made by Lyme St. is "The Prince Albert" "noted as a house used by coal-porters", but quiet. Pink-barred, as map. In Pratt St. at this point, between Camden St. and Little Camden St. the block is down, for an extension of Maple's warehousing depôts. The rest of the street 3 st. houses, respectable working-class; Pink as map. The E. end of this st. S. side is taken up with Idris' Mineral Water Factory, and the Fire Brigade Station. N. side pink as map. Up Great College St. again, and turning off to left N. of the Canal into Lyme Terrace: 2½ st. houses, on N. side only facing Canal; quiet spot. Pink as map. Into Camden St. again, passing "The Eagle" which has a second entrance here as well as its chief frontage in Gt. College St., and beyond the railway to Little Randolph St.: with a very "purple" group of children, poor and not poor, playing about. 3 st. houses. Purple as map. S. down the

King's Road: 2½ and 3½ st. houses, some semi-detached; No. 80, now xx empty, recently vacated by Marie Lloyd; Nos. 131 and 133 were brothels 18 months ago. The Road remains pink-barred as map. as far as S. Paul's Road, then pink on E. a on W. side. The house at S.W. corner of S. Paul's Road is

Prebend St purple

Prebend Place - lb

(4)

a decent common lodging house. Turning W. out of King's Rd. Randolph St.: mainly 3 st. houses; quiet working-class. ~~is~~

Pink as map. Parallel and S. is

Prebend St.: with a queer back entrance to the Camden Arms in Randolph St. The houses, 3 st.; remains pink, as map.

Canal Terrace: corresponding very much to Lyme Terrace on the other side of the Canal, remains pink, as map.

Prebend Place: running out of Prebend St. (S). contains 10 or 12 2 st. houses, said to be occupied by a "poor working class," but really a mixture, and should be purple, rather than pink, as on map. Down King's Road passing

College Grove: (W. side); 2 st. houses; gardens; quiet, respectable; police, railway men etc. living here; rather low-grade pink, as map. <sup>Row's 9/10-11/12. In families in one of the houses =</sup> Near the E. end of the Grove is the back entrance to the Veterinary College, with a sad looking collection of horses, ponies, and one donkey <sup>(out-patients)</sup> waiting for the free attendance that is given in one day at least.

ig the week.

The King's Road S. of the railway with houses getting more scattered as you go South, and of various styles, remains pink and red as map. Some of the houses on the E. side are semi-detached, with tiny sloping gardens in front: "a perfect picture in summer", but these are very exceptional, and

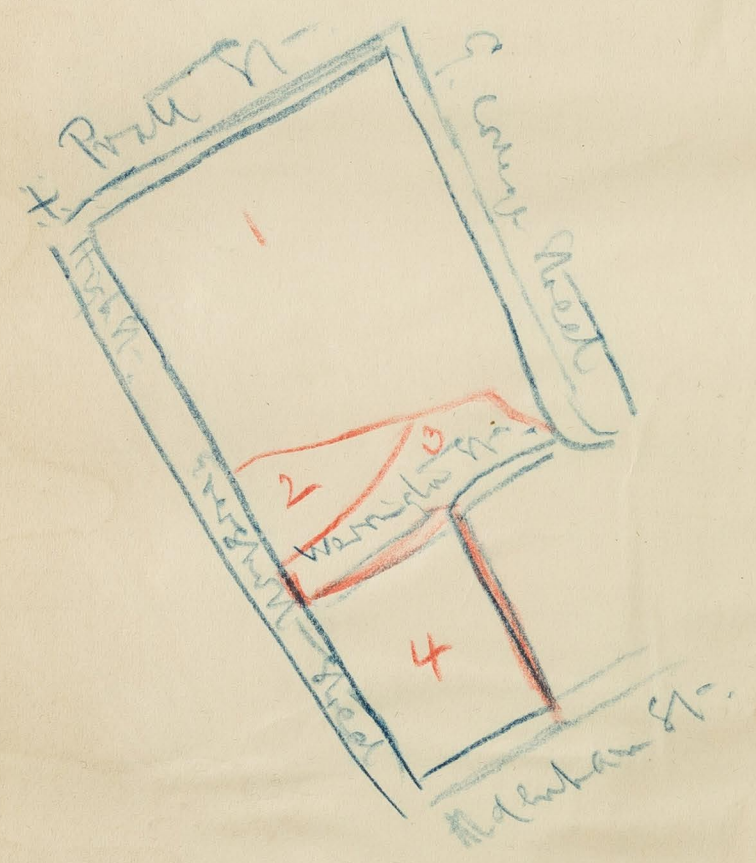
(5)

The Road is dominated for the most part by large business premises and stores, one of the very largest being those belonging to Bass.

REPRODUCED FROM THE TOP SECRET COLLECTION

Notes

- (1) Part of S. Stephen's Parish
- (2) ——— Mather's —
- (3) ——— Old S. Peter's —
- (4) ——— S. Mary's —



\* Starting point.

Notes of a walk with Inspector Bowles, in an area bounded on the N. by Pratt St.; on the E. by Great College St.; ~~xxxxxxx~~ and Stibbington St; on the S. by Aldenham St. and Werrington St; and on the W. by Eversholt St. and the High St. forming parts of the parishes of S. Stephen, S. Mather's, S. Peter's, S. Mary's.

O.E.A.O Nov. 15. 98.

Starting E. down Pratt St. on the S. is  
Pratt Mews: no one living here now.  
Bayham St.: character of occupants very much like those in the N. end; 3 and 3½ st. houses; remains pink, as map.  
High Street: from the Mether Red Cap to the Cobden Statue, an important thoroughfare, with many good shops; bus route and trams; remains red as map.

Out of King St., north and south, is L  
Little King St.: on N. side, stables, with rooms over on W. side, and 2 st. cottages on E. Railway men etc. From l. b. to purple. On the S. side the same sort of thing; coffee stall keepers, cab proprietors, etc. Camden Sq. Chapel at N.E. corner. From l.b. to purple. Both ends of the st. are cul de sacs.

King St. itself is very much like Pratt St.; shops and houses; 3 and 3½ st. houses. Remains pink. Running N. is  
Queen St.: a good broad street of 3 st. houses; respectable but unusually depressing in appearance, and the roadway

Archer St. - purple

Camden St. - between Pratt St. & King St. - pk & lb

Little Camden St. - lb & pk

(2)

99

in a bad state of litter. "Yes", said my inspector, "no Vestry-man lives here". Parallel on E. side is Archer St.: 2 st. houses; much improved; all courts have gone a few new houses; 2 or 3 l.b. left, but now from l.b. to pink. Rogers' Pina<sup>o</sup> factory breaks the line of colour on the E. side.

Factory -

Camden St. between Pratt St. and King St. has altered a good deal. On the W. side are 2 st. cottages along nearly all the line, standing back with long strips of garden in front. Quiet respectable occupants, including a L.C.M. They let at from 10/- to 11/-. Towards the N. end there are three tiny one storey cottages, and these remain l.b. but all the rest of this side becomes pink. It is the same on the E. side, but here new 3 st. models have been put up, let in 3 and 4 rooms sets at from 9/- to 11/-. Good working class. They reach N. up to the clearance for Maple's. Colour pink.

Maple's

Little Camden St. is also metamorphosed, Maple's repository running along the whole of the W. side, save for one pink house, belonging to them, to the S. end. Stables and tiny dwelling rooms still take up half of the E. side from the N. end; then Humphrey's American Organ Factory and other

College Place - between Pratt St & King St } - pk b<sup>2</sup>

Great College St W. side pk v pk b<sup>2</sup>

(3)

business premises. The N. half remains l.b. 101  
College Place is still more transformed, having been re-built between Pratt and King Streets on both sides; flats, 3 st., bow windows on each floor; similar style to those in Camden St. but "superior" in fittings and occupiers. Several keep ing servants; some inspectors of police, including Bowles himself, and others in the Marylebone division. The housing difficulty very acute there, whereas in Bermondsey, from where Bowles moved to Somers Town, rents rule much lower. It cost ~~him~~ him about 5/- more per week in rent when he came N. of the river, and only about half of his extra pay was a net gain to him. The people living in this part of College Place are "great swells on Sunday"; School Board officers etc. etc. From purple to pink-barred.  
Great College St.: On W. side 3 st. houses, belonging to the Ecclesiastical Commissioners, down to Crowndale Road. All partly let out, and working-class, except a few houses N. of King St to just above the "R" of the map. These remain pink-barred, but the rest goes to pink. On E. side shops; 3 and 2½ st. houses; remains pk-barred. At S.E. end is the S. Pancras Labour Bureau; about 30 men reading the newspapers on the hearding or standing on the kerb. Turned up Crowndale Road, and N. up the S. bit of

Camden St S of King St pk 6<sup>o</sup>

Groundale Road pk 6<sup>o</sup>

Bayham Place S end W

(4)

College Place: unchanged; 3, 3½ and 4 st. houses; mainly good working-class; some "apartment" notices; still pink.

Camden St.: S. of King St. has lost its red. On the E. side, near the top, are some new 4 st. flats, and below, where the colour of the map shows, good substantial 4, 3½ and 3½ plus attic houses. "Apartments" etc. From red to pink barred. Into ~~XXXXXXXXXXXX~~

Crowndale Road: E. end to College Place, 3 st. houses, mainly shops of rather a poor type. Further W. private houses, 3 st. 3 plus attics, and 4 storeys. The block between Camden St. and Bayham St. the best, but "apartment" notices scattered about, and hardly one of the small garden spaces in front of the houses showing any sign of care. The whole street from red to pink-barred. N. into

Bayham Place: approached by an opening the S. side of which is new workshops, and should be uncoloured. At the S. end are some mews, small, that should be l.b.; to the N. of these are 2 or 3 2 st. cottages, pink as map. The main lines of the Place are also pink, as map, quiet 2 st. houses, letting at 9/- or 10/-.



King's Place, in King St. opposite Archer St.; mews; a few living on W. side only; l.b.; not coloured on map.

(5)

Bayham St. at this S. end resembles the N. part. S. dow  
Eversholt St. E. side, 4 st. houses; shops; pk. barred, as  
map.

Oakley Sq.: large well-built houses, the square keeping i  
its character, with very few exceptions, as a good residen-  
tial neighbourhood. At No. 4, the widow of a railway porter  
and at No. 20, a cabman are living, and No. 5 showed an "a-  
partme nt " notice. But these exceptions, and the sq, remain  
red, as map. The garden of the square is still private.

Goldington Crescent, (S.E.) 3 st. houses; mainly working-  
class; very respectable; pink, as map. S.W. down

Werrington St.: mainly 3 an 2½ st. houses; a few shops; a  
good working-class street; pink, as map. At the W. end is

Crawley News: the usual character, including a cab master  
who is a considerable proprietor. as well as S. (On map N. is pk. Purple, N. side. Passing  
the side of the "Duke of Bedford", the only "free" housex in  
the Sub-division, and rumoured to be worth £100,000 -- pro-  
bably an over-estimate, into

Seymour Street: as far as Johnson St, 3 st. houses; shops;  
better than pink, and should go to pk. barred to this point.  
on E. side.

Once S. of Oakley Sq. and passed its protecting line  
of respectablity -- Werrington St. -- a bit of "the real

*Crawley News - N. side - W*



Somers Town" is reached, and the small block bounded by Seymour St., Johnson St., Stibbington St., and Aldenham St is one of the worst <sup>a</sup> areas remaining in the whole of the Sub-division. It has improved somewhat, and the police give it a fair character as regards criminality. But it remains a dark, if not very black corner of London.

Johnson St: the W. end is the worst, W. of Clarendon St. 3 and 2½ st. houses; towzled haired women, standing at open doors, bare-armed; dirty children, and the houses with too many broken windows, stuffed with temporary mendings. But nothing is charged against the street worse than roughness and drunkenness. This end goes from d.b. barred, to dark blue. E. of Clarendon St. things improve somewhat, and several of the houses are clearly occupied by well-to-do folk, including a showy undertaker's establishment. From d.b. barred to purple. S. down Stibbington St 3:st. houses, with a few shops. Medburn St. Board School gradually extending on the E. side, and this extreme N. end of the street, like the ext emt S. somewhat better than the middle between Johnson and Aldenham Streets but the whole remains purple. W. is are Bridgewater St. and Sidney Street: short streets, 3 st. hous very much

*Johnson Street - lb*

*Sidney Street - lb*

Little Clarendon St - db b<sup>d</sup>

very much alike in character. "Rather rough ~~ix~~ at times" drunkenness etc. most doors open, but perhaps above d.b. standard; children as a rule decently clad. Incline to dark blue for both, instead of the l.b. of map for Bridgewater St. and the d.b. barred of Sidney St.

Aldenham St. W. of Stibbington St.: 3 st. houses; "more of a thoroughfare than Johnson St. but very much the same class of people in it, as in the better end of the latter". Purple as map. Much the same in character is

Clarendon St.: 2 and 3 st. houses; a few shops at N. end; purple as map. Parallel on the W. in

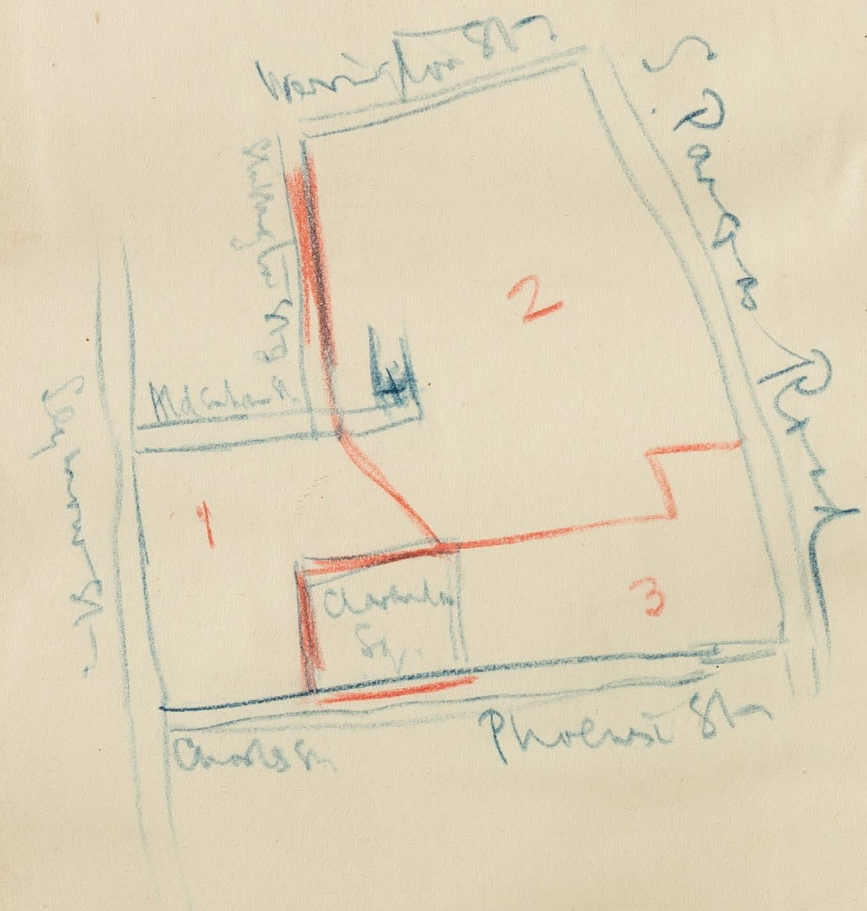
Little Clarendon St.: a narrow thoroughfare of bad repute, although even here, Bowles thought that there was not much crime. It is however the worst spot in the immediate n'hood and a good many prostitutes and amateurish thieves are living here. The houses are small, 2 storeyed, and do not look so poor as those of Sidney St. Perhaps the gains of vice show themselves, but there is much obvious dark-blue, and this should be the colour of the st. with a *black* bar, instead of the unrelieved black of the map. The local name for the street is "Little Hell", and prisoners on being charged not infrequently describe themselves as living in *this* a bye way of the nether regions. The ground landlord

of this street, as of so much of Somers Town, is Lady Henry Somerset, and in Little Clarendon St. Bowles said that she was the house landlady as well, collecting rents through an agent. Subsequent information goes to disprove this statement.

Seymour St:S. of Johnson St. has smaller shops; the buildings are 3 storeyed, and the whole of the rest of the st. is rightly coloured pink. The coffee house at No. 174 is x suspected as a brothel.

- (18)
- (1) Pan-cy S. Marys Parish
- (2) Old S. Pancras
- (3) Christ Church

Barclay St<sup>e</sup> purp.



+ Skating Pond

Notes of a walk with Inspector <sup>Price</sup> Bowles on Nov. 23. 98. 70  
 Area: the space enclosed by the line of Seymour St.; Aldenham St.; Stibbington St.; Medburn St.; S. Pancras St. and Phoenix St, forming parts of the parishes of S. Marys, S. Pancras, + Christ Church.

Barclay St.: 3 st. houses; dull; a good deal of brewers' property round here, including this street; working class; houses at N.E. corner the poorest. From pink to purple.  
Charrington St. (N. of Medland St.) 3½ and 3 st. houses; the best street of this immediate n'hood; some "pink", "apartment" houses not uncommon, and some private in hands of single occupants. Pink-barred as map. The S. end of the street not quite so good, but still remains pk-barred, as map. By Goldington Crescent into  
S. Pancras Road: mainly warehouses etc.; 3 or 4 shops at N. corner, xxxxxx W. side (none on E.) occupants working-class pink, as map, but too much colour. W. into  
Chenies St.: 3½ st. and 3 st. houses; good working-class; houses well-built; Duke of Bedford's property. Pink as map.  
Goldington St.: 3 st. houses; very much like Chenies St., but not quite so good. Pink as map.

A good deal of the Duke's property round here, and the neighbourhood sometimes spoken of as "Bedford New Town."

(2)

Platt St.: 3 st. houses mainly. Police station here; one house occupied by Mr. Purchase, the L.C. Councillor, but his private occupancy an exception. Mainly good working-class. Pink as map. At the S.E. end is

S. Pancras Square: "models"; rents from 5/6 to 9/6; (2 rooms and scullery : 5/6 to 8/-; 3 rooms and scullery, 7/6 to 9/6). dull but good; room for 105 families; these particulars from the caretaker; Pink as map.

S. of the models and E. of Goldington St, as shown on the map, there has been a good deal of change owing to Midland extensions, the whole of this block, as far as Phoenix St. being now taken up by the coal <sup>and goods</sup> depot of this Co. Stanmore St. thus disappears; there are no dwelling houses in S. Pancras Road, S. of ~~xxxxxxxx~~ the models; the colour on the ~~W~~ E. side of Brill St. goes out; Aldenham St. loses its E. end; while the whole of Goldington St. S. of Platt St. and Brill St. have been re-named Purchase St. as a compliment to the Councillor for the district. On the W. side of Purchase St.: colour also goes, as there is nothing there but school, stables etc. While in the n'hood of all these changes due to railway expansion Bowles mentioned that the Midland had bought the <sup>Polygon</sup> Paragon and put up the buildings now there to accommodate the people they displaced. But it

Ossulston St. N end & W side - Hampden St. }  
to Phoenix St. - purple }

(3)

is mainly there own employees who are living there. Out of Platt St. N. is

Penrhyn St.: a short street of 3 st. houses; quite respectable; and, when we were there, quite dead. Pink, as map.

Medburn St.: which gives its name to one of the most famous of the L. Board Schools, is very much like the foregoing in character, and remains pink, as map. Down Charrington St. to Ossulston St. where again off the E. side there have been considerable changes, owing mainly to the building of the Hampden Residential Club. Middlesex St. has gone, and the main entrance to Hampden House is about where the S. end of this street used to be. The street frontages of the House are in the E. end of Hampden St. and, from this street, about half-way down Ossulston St. on the E. side. The House is for young professional and business men, and should perhaps be coloured red. The N. side of this E. end of Hampden St. is now taken up by the Church etc, and its colour <sup>same for new Presbyterian Church on E. side (Wafford's; 'so popular'; called the "Bishop of Limerick")</sup> goes out. The ~~W~~ extreme N. end of Ossulston St. and the W. side between Hampden St. and Phoenix St. remains purple, while that part of the E. side not yet taken up by Hampden House, which is growing, remains pink. The W. end of Hampden St. with  $3\frac{1}{2}$  st. houses; rough; remains d.b. as map. It is one of the miserable bits of this neighbourhood.

(4)

In Phoenix St. E. of the entrance to Hampden House, are 4  
 3 st. houses of pronounced dark-blue colour, that ought to  
 come down, and on the W. side of the entrance a couple of  
 pink houses. W. of Ossulston St. the st. remains purple,  
 as map. There are 2 or 3 poor shops on S. side. Leading out <sup>N.</sup>  
Equity Buildings:(N.) a queer little paved cul de sac; low  
 one storey two-roomed cottages, with a little wash-house <sup>and yard</sup>  
 behind; been done up during last year; doors open straight  
 into rooms; some dark-blue, but many of the houses appeared  
 to be very full of furniture; rents from 6/6 to 7/-; leave  
 light blue, as map. W. into Clarendon Sq. and up  
Stibbington St.; very much like Clarendon St. and remains  
 purple, as map. Back into  
Clarendon Sq.: N. side: S. Mary's new schools, and some old  
 large houses that had evidently seen better days. Remains  
 purple, as map. W. side; 3½ st. houses; better than N.  
 but perhaps still purple. S. side; varied buildings: R.C.  
 Church and Convent on the E. side of it. The dwellings re-  
 main purple. E. side 4½ st. houses; a few shops; perhaps  
 from purple to pink, but if this change be made, it should  
 also be adopted for the W. side. E. of the N. side is  
Gee St.: 3½ st. houses; again like Clarendon St. Remains pur-  
 ple as map. Out of Seymour St. (E) is

(5)

Clarendon Place: 2 st. houses, with garden fronts, and no gardens; generally two families to a houses; rents 13/-; remains purple, as map. To the S. is

Charles St.  $3\frac{1}{2}$  st. houses; good working-class . Remains pink, as map.



Police  
18

(a) Notes of a walk with Inspector Bowles in the S. part of the Somers Town Police Sub-Division, bounded on the N. by Charles St., Phoenix St., and Battle Bridge Road; on the E. by King's Cross Ry. Station; on the S. by Euston Road, and on the W. by Seymour St., the area forming part of the Parishes of S. Marys, S. Pancras, & Christ Church.

(E.A. Nov. 28.98.

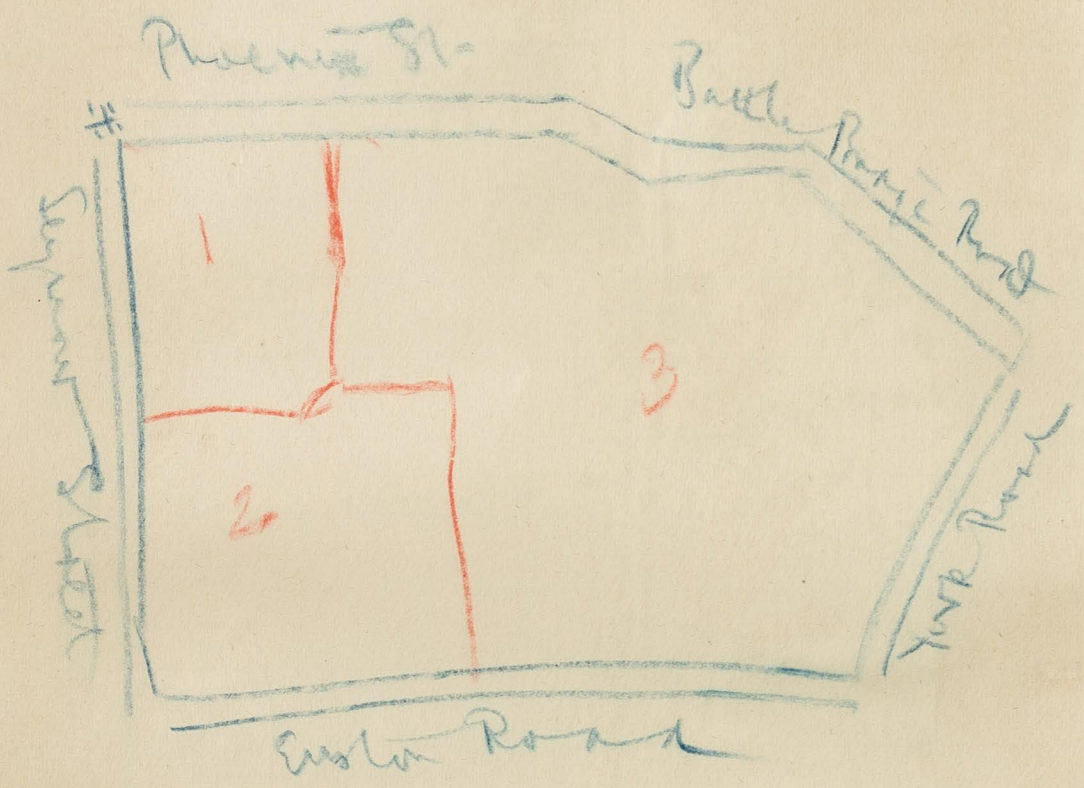
Starting E. up Charles St. we turned S. down Clarendon Grove: 13 two st. cottages; W. side only; generally 4 rooms, and letting at about 9/-; 2, sometimes 1 family to a house; 6 feet of garden in front, and said to look pretty in summer, some of them, but very few shewing signs of care; quiet. From purple to 1.b. S. down ex.

Chalten St. as far as Christ Church: mainly 3 and 3 1/2 st. houses; shops begin after this point, and the Street market. Market daily; Friday the busiest day; many Jews come from White chapel, selling draperies for the most part. About one o'clock they make their way to the Rag Fair in the Cattle Market

Local dealers don't appreciate this invasion, but Bowles thought it was liked by the public generally. In Chapel St. later I saw a draper's shop, that had been opened by a Jew the day before. Chapel St. before it was shortened by the railway extensions was the scene of the present market, which was given a home in Chalten St. at that time. It is not al-

(18)

- 1) St Marys + St Marys Parish
- 2) ——— St Pancras ———
- 3) ——— Christ Church ———



Clarendon Grove - W

H. St. Marys par.

(2)

lewed to come quite up to the church entrance. S. of the Ch.  
 there are shops, some considerable, especially a large dra-  
 per's at the corner of Chapel St. but most of them third-  
 rate. A poor population for the most part occupies the house  
 , and the street remains, purple as map. By Phoenix St to  
Ossulsten St.: as far as Chapel St. Railway buildings from th  
 Phoenix St. along the whole of E. side. On W. side as far as  
 Chapel St. 3 and 4 st. houses, the latter a block of dwell-  
 ings just N. of Chapel St. . Some shops; the whole rather  
 "rough". Remains purple as map. Leading out W. are 2 courts,  
Eastner Place: most to the N. is wrengly shaped on map, but  
 is rightly coloured -- dark blue. Consists of 2 st. cottages  
 for the most part, one row being tucked away on the W. side  
 behind the little square in which the Place opens from the s  
 with one or two others of very sorry structure detached on t  
 the N.W. corner. There is also a small block of 3 st. build-  
 ings on the E. side not shown on map, and newer than the res  
 Many broken windows, doors open, and a general appearance of  
 neglect, the best feature being the cleanliness of the court  
 itself. Three or four ill-clad children the only signs of  
 life. Describes as "very rough and drunken", and "not far  
 from being as bad as  
 York Place":

(8)

127

York Place: four or five 3 st. houses on N. side only; every thing bare and neglected; the very home of squalor, but "not criminal". Remains d. blue. W. into

Chapel St.: mainly 3 st. houses; shops: Liptons, Home and Colonial etc.; this street, the home of the old street market until shortened by railway extensions, still retaining its character as a busy st. but now rather an annexe of Chalton St; very few of the shop-keepers living over; a draper's here, the first in the n'hood belonging to a Jew, opened the day before our visit. Remains pink as map.

Chapel Yard, on N. side of Chapel St. not marked on map; mews; costers etc. been there ~~for~~ for 15 years: should be l. b. if coloured. On S. side of the street is

Clark's Yard, sometimes called Grove Mews, a queer corner; 4 roomed houses at end, but for the rest rooms over stables went into one up steep ladder; 2 rooms, with W.C. etc. woman and five children, husband working at Brentwood, and coming home once a week. Room not bare, and woman a very decent so Pays 4/-, less she thinks than anyone else would, because she has been there so long. From d.b. to l.b. Close by

Chapel Grove: "1830"; 2 st. cottages with a small block of newer 3 st. dwellings at S.W. corner. Went in to No. 7 of the cottages; 2 rooms, with little scullery and yard at back

*Chapel Yard - lb*

*Chapel Grove - db*

(4)

rent 6/6 a week; occupied by widow and 7 children; been the many years, and gave a bad account of decline of the Grove during last 4 years; people come from Chapel Mews (?) etc. costers mostly who are busiest on Sundays and Saturdays. Consequently these days the quietest in the Grove. Things begin to get lively on Monday. If this woman's diagnosis is correct the place will soon be d.b., but at present it should rather go from purple to l.b. although there is certainly d.b. in it. Down

Ossulston St. which remains purple as far as Weir's Passage some shops; Went in to No. 45, until lately occupied by Mr Purchase, and on his removal into Platt St. taken by a man who put up the legend "Last and Stretcher Maker", to conceal his real occupation as a brothel keeper. He was there for 7 Weeks and then turned out and convicted by the police. He proved to be well-known and is supposed to have a gang of women who use whatever house he opens. The agent met us close by, and showed me the deserted establishment, including the spy hole in the shop-window commanding the entrance the passage entrance partitioned off with match boarding, and the hand hole, by which the latch could be reached and withdrawn and the money of those entering be taken without anyone appearing. The rent had been £45; the man's refer-

Ossulston St - S of Weir's Passage - pk

(5)

ences had been quite good, but had not been verified. One has been since proved to be one of the man's own, and all professed to be from rather distant parts of London. The agent was busy or away at the time, and thus the tenant was accepted. But in any case very difficult to test references every one can find some one who will give them - it may be a friend who has some private end to serve, or a late landlord who will perjure himself to get rid of undesirable tenants. Thus in some n'hoods the difficulty of keeping up the respectability of tenants very great. The agent was a very decent young fellow, acting for a firm of solicitors employed by the Midland, whose property much of the adjacent property now is. Close by, further S. in this street, a block of buildings for which the same man was acting. They had been very queerly manged, and he was trying to pull them up. Rooms from 2/- to 5/-, in sets of 1 to 3. S. to Weir's Passage ~~XXXXX~~. in which, at no. 5, we passed a coffee house, suspected as a brothel. Running out of the Passage N. is Wilstead Cottages: reached down some steps; 2 st. cottages on N. side only; wooden railings; 8 or 10 feet of garden; door lead straight in to houses; spoke to a woman who had been there for 12 years; 3 rooms and wash-house; rent 7/6. Quiet l.b. as map.

(5)

Weir's Passage: 2 st. houses; a good many shops, several of them closed; a gloomy looking place, but not so rough as of old. From d.b. to l.b. Back into

Ossulston St.: turning S. towards Euston Road. Passed a publ house, with a notice in the windows "The Police have strict orders to remove all persone loitering about these premises," a bit of bluff, said Bowles; "We have no orders", but the notice does help the landlord. At no. 1 was a large window with a stock of brushes scattered about; "one of their devils" said Boles. It had done a flourishing business as a brothel for a few weeks, and was then closed, and the brushes have been left behind! The street is mainly shops here, and should be pink-barred, not red as map. As also is the case

Euston Road: from Ossulston to Seymour St.; mainly a shop frontage, with the houses occupied in all sorts of ways. N

Near here we passed the building marked on the map as a Temperance Hall, with its back entrance in Weir's Passage. The place is now called the Cecil Reading Club, and has a doubtful reputation for betting. In any case the quondam Temperance Hall has fallen on evil times. Up ~~xxxxxxxxxxx~~

Chalton St.: poor shops etc. still purple, as map. N. is

Christopher Place- 4 little 2 st. houses, on N. side; 2 roo with a common yard behind; 2 w.cs. for the lot; went in to one

*Christopher Place - lb*

*Seymour St SE corner pk & db*

*Grafton Place pk & lb*

*Wellesley St db b<sup>d</sup>*

*Lancing St { N side lb: S side W half lb }  
                  {                              & half db }*

(7)

135

one house; lots of furniture; rent 5/6; "quiet". From d.b.  
to l.b. Back into Huston Road, and W. to  
Seymour St.: same general characetr as at N. end; third rate  
shops for the most part; remains pink, as map. The red goes  
out at S.E. end, and the corner itself should be purple,  
for a common lodging house; beds 6d., 9d., and 1/-. "Quiet".  
Grafton Place: 3½ and 2½ st. houses; now a broad cul de sac,  
but the end is coming down and the place is marked out for  
the S. end of the projected L.C.C. improvement in Church  
Way that will soon change much of this n'hood. The Place is  
described as "quiet and respectable"; "apartment" notices  
are common. From purple to pink. N. is  
Wellesley ~~Rxxxx~~ St.: 3 st. houses; a cul de sac; In hands  
of L.C.C. and included in the Church Way improvement scheme  
houses coming down; at present it is one of the worst spots  
from every point of view in the whole of Somers Town, and  
the d.b. should have a xx bar of black. It should be re-vis  
ited next year. Again to the N. we come to  
Lancing St.: 3½ st. houses; much better than Wellesley St.  
but by no means free from the broken-windowed and poor  
type of house. It will probably share in the local improve-  
ment when Wellesley Place is demolished, if steps are taken  
to prevent its degradation by the influx of its undesirable

neighbours. Went into No. 8 to view the backs of Wellesley St., being invited by the owner, a woman who had been there many years, and is longing for the demolition of the adjacent street. Her own house was the pink of order, but she was well-to-do, and clearly something far above the bulk of her neighbours, even those in her own street, to say nothing of those in Wellesley St. itself. Lancing St. remains purple? the d.b. patch at N.W. corner.

Drummond St.: 3½ st. houses, with attics for the most part; rougher than Lancing St.; 3 or 4 p. houses only and should go from purple to l. blue. Running out of it is

Roberts' Yard: Mews; not shown on map; very poor; d.b. if co-oured.

Elizabeth Court: out of Church Way (S.) is coming down; 2 or 3 occupants left, one of whom we saw. She had up to the present searched, with her husband in vain to find new quarters; half her window was broken, and cold, if nothing else would soon drive her to some other place.

Church Way, mainly 2 st. houses; very narrow passage, but, although strait, it appears to have belied scripture, and having led its denizens to degradation, is now doomed to destructionxx itself. Passed the entrance to the Hit or Miss Beer house, which runs through to Grafton Place, and for whi

*Drummond St. - lb*



*Drummond Crescent - lb*

which £1000 is said to have been paid by the L.C.C. as compensation. The only bit of Church Way that will be left will be the short end at the N. running into Chalton St. This is a busy little spot, full of shops, but may remain purple, as map. The whole of the courts S. of Church Way York Buildings: d.b. on map, are already closed, and like Elizabeth Court, Church Way, and Wellesley St are coming down.

Although the Church Way improvement will effect a very wholesome clearance, it is difficult to see that the new thoroughfare, running as it will from the S. end of Drummond Crescent to Grafton Place, and so out to Seymour St. will be of great use. The area will still be very much tucked away, and it is a great pity that the negotiations by which an exit into the Euston Road would have been secured have broken down.

Drummond Crescent: 3 st. houses; rather better than the st. of the same name; poor working class for the most part; remains purple as map.

Little Drummond St.: 2 st. houses; the most respectable spot we saw just round here; has a good name. ? from purple to pink.

Note: At the corner of Seymour St. we met Mr. Brooke, the present Vicar of S. Mary Woolnoth in the City, who told me that 25 years ago he was vicar of S. Mary's. He gave the worst character to much of the district.

*Culross Buildings - pk*

*S. Pancras Rd S. end pk<sup>o</sup>*

*Stanley Buildings - pk*

mentioning Little Drummond St. as being one of especially evil repute, down which the police never went alone, and in which, indeed, they often took him as a convov. "Very different now, Sir" said Inspector Bowles.

This finished Somers Town, and we went next, by Midland St. lying between King's Cross and S. Pancras and known by the cabbies on account of its bleakness and draughtiness on winter mornings as "Cold Blow", and Cheney St., passing on the right, the G.N. Institute, to

Battle Bridge Road: The only dwellings here are the large Culross Buildings, put up by the G.N.R. for their own men; not coloured on map. They are 4 st. blocks on S. side-- 5 of them with 8 sets of rooms in each. Pink. Good.

S. Pancras Road: S. end 3 and 4 st. buildings, offices, shop etc. should be pink-barred, not red. and

Stanley Buildings: 4 storied; belonging to the Improved Industrial Dwellings Co.; good; rents from 7/- to 9/-, should be pink, not purple as map. Out of Wharf Road to

Cambridge Road: on the right hand side, S.E. corner some coal merchants offices, and 2 little 2 st. houses, light blue.

For the rest the road is, when the Gasworks have been passed a wilderness of coal depots. We passed two youngsters "coal-thieves" engaged in their calling, and taking lumps from a cart. The offence is common and hard to punish, for, as

(11)

Bowles said. "You can't swear to coal!". So the youngsters cut and run, with comparative impunity. At the N. end of the Road steps lead up into the Old S. Pancras Gardens, in the middle of which the tiny Norman Church of Old S. Pancra The Gardens have been diminished by the railways, and the head-stones that had to be displaced have been stacked in a strange star-shaped forms, silent reminders of the encroachments of the Midland.

19

Notes of a walk with Inspector Bowles (Nov. 29) in the area, as marked on the plan, bounded by the Camden Rd., York Rd., S. Paul's Rd., Wrotham Rd., and King's Rd., forming part of the parishes of S. Paul's + S. Thomas.

(E.A.)

Camden Road: from King's Rd. to York Rd. mainly a private residential Rd. remains red. S. down

York Road: shops as far as the Schools; good at N. end, but rapidly deteriorate. Opposite North Rd. is the "Crown Tavern" built by the City Corporation, for the Market, but not successful; not tenements; large rooms; moderate reputation.

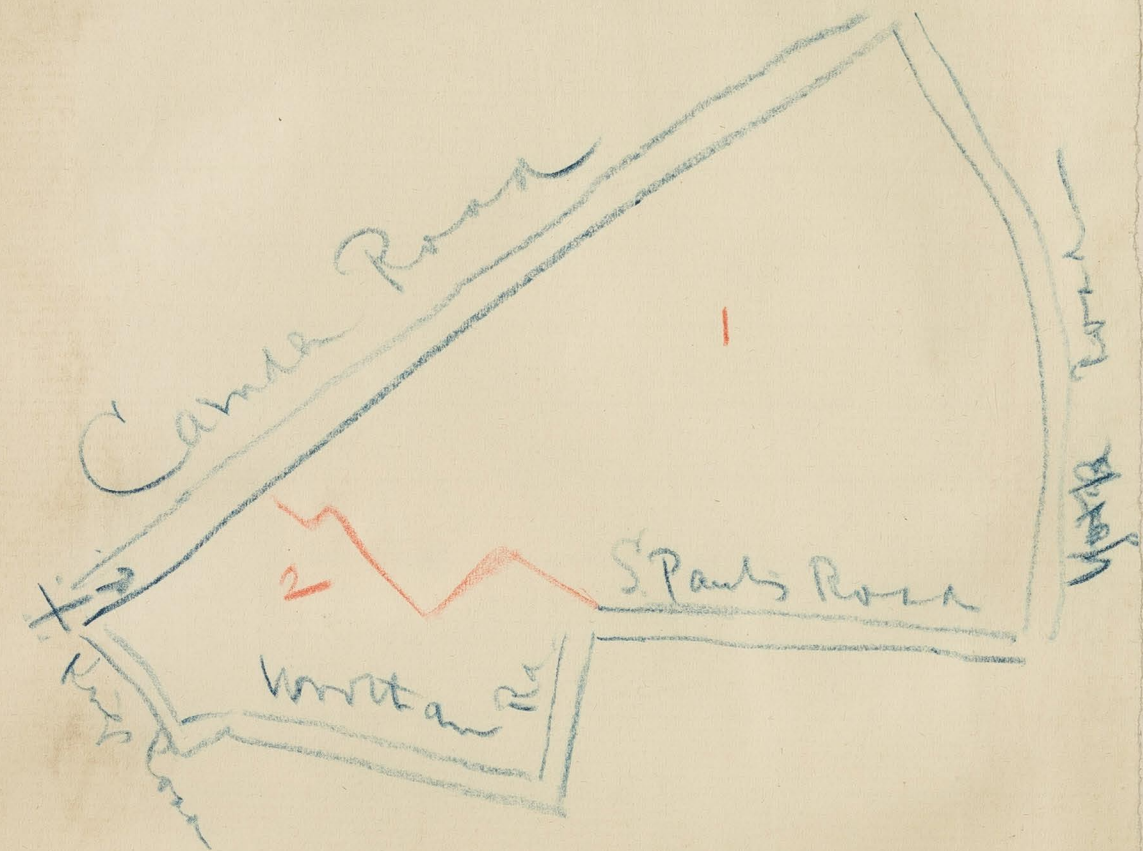
The "City of London" at corner of Camden Park Rd. is a pub. with private occupants living in tenements overhead. No separate entrance from the street, but a door leading up staircase just inside; occupants can be supplied with liquor at all hours, but no complaints, and house well managed; the arrangement known to licensing bench. The Road pk.bd. and p. as map. S. of Schools 3 st. houses. At top W. is

Camden Mews: very long, running right through to Rochester Sq. some private stables still, cabbies coming in. From p. to purple.

Camden Park Rd: mainly 3 1/2 st. substantial houses; some shops at S.E. end; from r. and p. to p. barred throughout. N.E. is

Clifton Rd: 3 1/2 semi-detached; "apartments" common; some of the houses getting decidedly shabby. From red to p.bd.

listed 19



① Part of S. Paul's Parish  
② ——— S. Thomas, Agar Lane

+ North Paul

purp.

pk b<sup>d</sup>

pk b<sup>o</sup>

Clifton Villas pk 6<sup>3</sup>

Canteloves R<sup>d</sup> pk 6<sup>3</sup>

(2)

Clifton Villas: even more than Clifton Rd. have gone down, some of the houses not even maintaining the level of the shabby genteel. With other parts of this n'hood, the exact limits of which I could not quite make out, they form part of the Camden Estate, and this has been affected by the removal of gates a few years ago by the L.C.C. and by the proximity of the Cattle Market, as well as by more general causes making for decline. The Villas from r. to p.bd.

South Villas and North Villas, together with the Square, have maintained their position more successfully than any other part of this n'hood; good 3 1/2 st. houses; the W. side of North Villas the most doubtful as to colouring, but leave all red, as map.

"The Terrace" N.E. of the Church in the Square, also 3 1/2 st. houses; large; remains red, as map.

Canteloves and S. Augustine's Roads: very similar in character 3 1/2 st. houses, have both gone down the hill together from red to p.bd. Just S. of the E. end of S. Paul's Rd. is S. Paul's Mews: a smith etc., very untidy; still l.b. but occupied only on S. side; never, so an old occupant told me, on the N. The colour here thus goes out.

Bowles had known Belle Isle from boyhood, and quoted

(3)

a saying of his youth by which smells of exceptional unpleasantness made people exclaim "It stinks like Belle ~~Isle~~ Ile" but whether the last word was intended to have a subtle reference to the fat of the slaughterers' yard, or simply to the district that ~~it~~ impregnated, I was not told.

Marquis Road: 2½ st. houses; working-class -- railway men etc. respectable; houses, especially the brick-work of the entrances from the road -- the houses stand back with a little frontage of garden -- not too well built. Remains p. S. Paul's Crescent: divided into three parts, the first (N.) 2½ st. the second, 3½ st. and the third bit, S. of the S. Paul's Rd. 2½ st. houses. All good working class. From p.bd. to pink.

S. Paul's Road: has gone down considerably since the map was made; houses mainly 3½ and 4 st. and semi-detached; spoke to the wife of the keeper of Camden Sq. who asserted that ~~the~~ only three families in the Road ~~kept~~ kept servants now; rents £45 and £48 plus rates and taxes; this necessitates sub-letting; the Road is better toward the W. end, and should perhaps be left p.bd. W. of Murray St. Above this point, from p.bd. to pk. The house at the end -- S.W. corner is the Common Lodging House already mentioned.

S. Augustine's Road: good semi detached houses; better on N.

*S. Paul's Crescent - pk*

*S. Paul's Road pk b° + pk*

*S. Augustines R<sup>d</sup> pk b°*

(4)

side, the Midland extension has "made havoc" at the S. end.  
From r. to p.bd.

Camden Square:  $3\frac{1}{2}$  st. houses, detached and semi; good; not equal to the rest now just above and below railway tunnel, but the Square, with its respectability still protected by a Square keeper, still red.

Rochester Sq:  $2\frac{1}{2}$  and 3 st. houses, with the centre of the square taken up by a nurseryman, goes from red to p.bd.

Stratford Place:  $3\frac{1}{2}$  st. houses; very respectable working-class; p. as map.

Murray St: remains r. as marked, but S. of the Square, where there are 3 st. houses, it is nearly all shops, with a good many of the shop-keepers living over them. The "Murray Arms" (1850) at the S.W. corner is said to have been the first house of any description put up in this n'hhd. This lower part of the St. from p. to p.bd.S. from this point, and S. of S. Paul's Road, is

Elm Road:  $3\frac{1}{2}$  st. houses; very respectable working-class. Pk. as map. The house marked red is in connection with the Church but is not the Vicarage, or in any case looked the most untidy house in the St. and should have no distinguishing colour -- perhaps should go uncoloured. Running E. and W. is  
Wrotham Road: mainly  $3\frac{1}{2}$  st. houses; better E. of Rochester

*Rochester Square pk<sup>o</sup>*

*Elm R<sup>d</sup> red<sup>ho</sup> should be pk*

(5)

Place; working-class throughout, and remains p. as map at this E. bit. But W. of Rochester Place it should be purple, save perhaps for one queer little pink house, built wedge-shaped, 12 feet at its widest, and 4 ft. at its narrowest point, but looking quite spick and span, and boldly fronting the street with its four little windows.

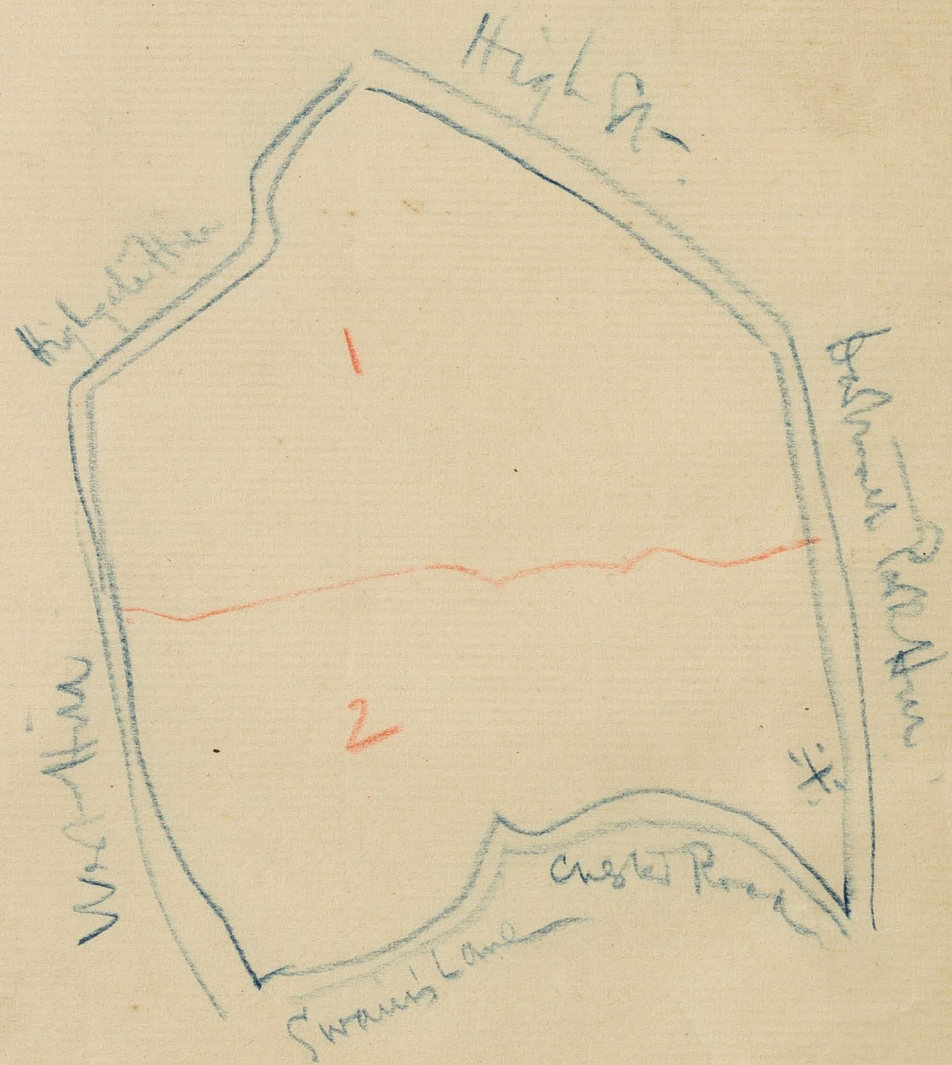
Rochester Place: S. of the Camden Road, remains purple, as map. On W. side S. of S. Paul's Road, there are now dwellings, new and old, and the purple colour should be extended to this point, on this W. side.

*Rochester Place - pk*



(19)

① Part of S. Michael's Parish  
② — S. Anne's



\* District 19

Notes of a walk with District-Inspector Mountifield,  
of the Highgate and Upper Holloway Sub-division of the Y  
Division of the Met. Police. (E.A.) Dec. 13. 98.

The area walked over was bounded by Dartmouth Park Hill, Chester Road and Swain's Lane, West Hill and Highgate Hill, and the High St. and formed part of the parishes of S. Michael's and S. Anne's.

Starting down

Dartmouth Park Hill: N. from Chester Road (W. mainly 2 and 3 st. houses; some shops; working-class, and not of the best kind -- the middle-class parts begin further S.; colour pk. low-grade. Turning W. into

Colva St: 2½ st. houses; very badly built; 4 or 5 families to a house; most let out through agents and rents collected from individual occupiers; not badly built up at the backs but the street one of the worst possible specimens in every other respect of semi-suburban "cottage" jerry building; people from Somers Town originally and character of street and n'hood very slightly altered since the first people came in; very little criminal work, but rough and drunken; every appearance of neglect both by owners and occupiers; several untidy ragged children about; one bare-footed boy, the second seen in the whole of district 19; colour dark blue.

Raydon St - purple

Doynton St - lb

Retcar Street - lb

Lulot Street - lb

West Hill } N end Yellow  
              } S -- red

(2)

Raydon St: W. of Retcar St. 3 st. houses on N. side; "better working class"; on S. side, 2 and 3 st. houses, some shops; E. of Retcar St. 2 st. houses, bow windows, same style as Colva St. but much better standard of street; houses fitted for 2 families, and generally let in this way; an occupier gave me rentals: 6/9 for ground floor, and 7/3 for top; pink.

Doynton St: 3 st. on S. side, and 2½ on N. still bad building but better than Colva St. Letting here, chiefly by floors, there by rooms rather; costers etc. untidy women about; colour light-blue. To the N. is

Retcar St: 2 st. houses; like E. end of Raydon St. but "a shade better"; standing back from the road on N. side are the tumble-down disreputable looking buildings of the Highgate Radical Club"; said to be "quiet"; the street pink. Of something the same style, but with a poorer class of occupants is

Lulot St: colour purple. All the foregoing streets are called Highgate New Town, and, although they vary in character they make up a small area that stands in no very good repute. There is no particular explanation save that the first people who came gave it a rather bad name, and ~~public opinion has~~ <sup>public opinion has</sup> been by way of hanging it ever since. *+ see note p. 6.*

Thence, along Swain's Lane to

West Hill: On E. side. once past the Church, nothing but the

(3)

grounds of Holly Lodge (Baroness Burdett Coutts) and the house  
 Just above is Holly Terrace, locked, a row of houses belonging  
 to the Baroness, probably red for the map. On W. side nothing  
 but private houses; a row or two; most detached; all good  
 and some large. McKinnon Wood, Chairman of L.C.C. lives near  
 the S. end; above are large houses occupied by Col. Wilkinson,  
 Mr. Bodkin one of the Stipendiaries, the Managing director of  
 Maples' etc. The Fox and Crown public house <sup>in Highgate Hill</sup> was closed in '96  
 now stables for one of the large houses near. Colour the Hill  
 yellow.

In

Millfield Lane, Merton Lane, and Fitzroy Park the houses are,  
 with only two or three exceptions, large, standing in their  
 own grounds; hardly any recent building; fine views from Mill-  
 field Lane over Parliament Hill Fields, the Ponds, and Lord  
 Mansfield's property. Colour the houses yellow.

Highgate Hill is very much like West Hill in general character  
 on W. side; a few large detached houses; colour yellow. On  
 E. side there are more and smaller houses; Cutbush's the flo-  
 rist's; colour red. We passed the N. end of Bromwich's Walk;  
 not very much used; quiet; "perhaps a few young people", but  
 no complaints; "very little of that sort of thing at Highgate"  
 Once up the Hill and the trouble of ascending at an end, it  
 is felt that a haven has been reached; quiet reigns in spite

Millfield Lane - yellow  
 Merton Lane - yellow

Highgate Hill }  
 N yellow }  
 S red }

Highgate Terrace red.

South Grove: S side of S portion red & pk b<sup>2</sup>

N " " red & pk & pk b<sup>2</sup>

N portion pk & red

Pond Square SW side pk

(4)

of the "Flask" public house and a few cottages; philosophers or Friends ought to be living here.

The Grove: yellow. Old and substantial houses. The houses N. of the Reservoir, a school etc. colour red.

South Grove, with the Flask at the S.W. angle, is made up of dwellings of very different styles. The public-house is flanked on either side by 2 or 3 cottages -- pink, and, following these round on the N. side are some 2½ and 3½ st. houses, with attics, rather non-descript in appearance: colour red. Turning along the S.W. side of

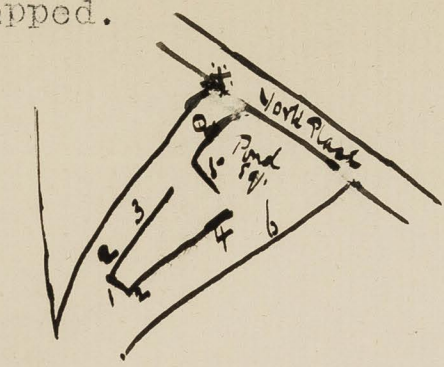
Pond Square ~~are~~ is a short row of old houses that have seen better days; "lodgings"; pink-barred. Again in

South Grove, at the corner, are some new flats, 3 st. "6 rooms and bath-room from £55"; red. Nearly opposite, on the S. side of the southern bit of the Grove, is a short row of new red-bricked, gabled, houses and shops; small; colour pink-barred.

The rest of this S. side of the Grove is red; mainly private houses, some large. The N.E. corner of South Grove, facing the Old Gatehouse, police-station etc. should be pink-barred. The Gatehouse is built across the Metropolitan boundary line, but is licensed in Middlesex, and has to close at 11, although an attempt used to be made to keep open a room or two that are entirely on the London side of the boundary until 12-30! But

(5)

this has been stopped.



\* Gate House.  
 o Museum

- (1) The Flats - red
- (2) Cottages - pink
- (3) Private Dwelling - red
- (4) Flats near - red
- (5) Old houses - pink-brick
- (6) New gables etc. - " -

High St - red  
 Fair Seat - yellow

York Place and High St. are very much alike N. of the entrance to Waterlow Park; shops etc. should be coloured red.

Bisham Gardens: (S)  $3\frac{1}{2}$  st. houses; red-brick, gabled; now entirely built over on both sides; rents about £42; mostly single occupants; houses on S. side overlook the Park. Red.

A little below the top entrance to the Park is Fairseat, given with the Park, to London, by Sir Sydney Waterlow. It is still privately occupied, and should have a spot of yellow. Lauderdale House, in the Park, is now used as a refreshment room, and is only occupied by the officials. It was called Nell Gwynne's House by my Inspector, and he pointed out Cromwell House on the Hornsey side of the High St. telling me of the passage that it was said connected the two houses, and hinting at the intrigues that took place between Nell and Noll! Such is fame, even in the case of the Great Protector.

(6)

Apart from Highgate New Town and the High St. the greater part of the area covered in this walk is well to do and residential. It has changed little in the last few year and there is little work for the police to do in it, apart from the protection of person and property from occasional burglarious attempts. Most of the public-houses in the sub-division are outside the London boundary, and of those so situated there are a considerable number -- 13 full and 13 off licensed houses. Of these 9 are along the Archway Road, 6 in the High St., 3 in North Road, and 3 on North Hill. None of these are marked on the map.

Note: It is not improbable that the proximity of the Small Pox Hospital helped to make Highgate New Town a low-class district. It is now no longer used as such, it being a temporary Poor Law Infirmary, pending the completion of a large new building that is being put up on the vacant site as shown on the maps to the S.E. of the "Small Pox Hospital".

Police 19

Interview with Mr. A. Vedy, Superintendent of the Y. Division of the Met. Police. (E. . .) Jan. 23. 99.

Mr Vedy is one of very best of the men in the Met. force. He came to the Y Division from the "H" in White-chapel. His general knowledge of his present area is much greater and more interesting than that of particular streets, and I found that when I put questions regarding such a spot as Preston St. he hardly knew it, except as a place that figured from time to time in the charge sheets. We talked therefore mainly on general topics.

The total ~~ex~~ charges in the Y Division have increased in recent years, and the increase has been mainly in the Holloway and Kentish Town Sub-divisions. He attributes it to three things: the better supervision of the police; the thickening of the population; and, recently, the good times, with the result that more money is flying about.

"Better supervision" means that the standard of duty has been screwed up to a higher point. It has always been "a point of honour" with the Met. police to arrest a thief, but, while in the provinces a man has to do something from time to time to show that he is not asleep, in London it has been rather the policy to let everything that could go without a charge do so. Thus cases of drunkenness and disorderly conduct have often been habitually dealt with by stop-

(2)

ping, moving on etc. if by any possibility these methods could be regarded as sufficient. A higher standard of efficiency thus means a larger number of charges because the police would be encouraged to arrest in cases that would previously have been otherwise dealt with, or perhaps not even dealt with at all. In London too where the efficiency of a constable is not measured by the amount of cases he has, there are many things that tend to make men avoid charging if they can, especially in the case of men on night duty. The great ~~XXXXXX~~ motive for not charging is the loss of rest that is involved. In the case of a night charge this is serious, as, when a man would naturally be turning in, he has to go to the court. They are trying to organize things <sup>so</sup> that a man shall be penalized as little as possible in this way for doing his duty, but the difficulty cannot be altogether avoided.

Asked as to the justice of the charges against the police of roughness and bullying, he thought that a good deal of it was traceable to the old habit of the police <sup>of</sup> taking the law into their own hands. Many a culprit in the old days got, and preferred <sup>- in a way for -</sup> "a good hiding" to being locked up. It was rough justice, often not adequate, but it saved trouble. But nothing of this kind is ventured upon now. The risk of



(3)

a counter charge is felt by the police to be too great. The result is that they wont thresh or knock people about on their own sense of what might answer the merits of the case as they would in days gone by. The whole attitude of the police towards street noises and street rows is altered. In ~~xxxxxxx~~ the past they could use their belt and did so. They could deal with the larrikin and the street rowdy, and if a yougster went home and complained that he had had a threshing from the police the chances would be that he would get another from his parents. But now a complaint of this kind is much more likely to be followed by a charge against the police, and the consequence is that the police dont interfere as they used to in the minor offences of the thoughfares. The consequence is that the complaints of street rows and gangs are increasing. The whole question is a difficult problem, and Supt. Vedy is by no means clear as to what the right solution is. The multiplication of the larrikin, largely through irregular and non-attendance at school, coupled with the unwillingness of the police to take them in hand, and the knowledge of the larrikin as to what the state of things is, constitutes a very difficult London street question.

Somewhat analogous is the attitude of the police in dealing with public solicitation. Before the Endacott-Cass

(4)

case they strained the law a little and interfered with women who solicited as being "disorderly persons". But now the men simply wont do it. Both the public and the Commissioner complain from time to time, but the men wont change, "and there's an end of it". Meanwhile the public suffers and has to put up with the nuisance. Vedy favoured control and thought that from the general point of view the advantages that regulation would bring were undeniable. People say that this would mean the licensing and thus the public recognition of morality. "But why are public houses licensed, except for the purpose of keeping in check what is considered to be a social danger.?" In his own division the evil of Prostitution is hardly a serious one.

Asked as to the character of the S. Pancras licensing bench, which Inspector Bowles had said was so excellent, Vedy hardly endorsed this opinion. All have their fads, and the fad of the S. Pancras bench is never to grant licenses to any one that has any other business, and to grant only one license to one person. The disadvantages of this system are in Vedy's opinion to curtail the operations of good business men and of considerable capitalists. He believes in capacity and responsibility as tending to ensure good management. In principle he agreed with the Sec. of Truman, Hanbury's, who

(5)

advocated the extension of the tied house system, holding that it would be a good thing for London if the public houses were all in the hands of a comparatively few people. From his point of view the best class of person would be "reputable brewers". Vedy, on the other hand, would like rather to see them in the hands of <sup>a comparatively few (or individuals)</sup> companies whose business was, not to brew, but to manage public houses.

As regards the personnel of the police force Vedy spoke with assurance of the great improvement that has taken place in recent years. He dates a marked improvement from the early eighties, and especially from '82, when Miss Gurney started her Society among the force, the basis of which was Temperance and Christianity. The Society, in any case in its original form, has ceased to exist, but the men who came forward at that time are now ~~ix~~ making their mark in the force. "The drinkers", "the old school" is now almost extinct and the young blood that is coming in to the ranks is now brought up under the influence to a great extent of sergeants and inspectors who are teetotallers -- the men of the '82 movement. Four of his own Sub-divisional inspectors are total abstainers, <sup>and cause Vedy himself, and he makes his personal work influence</sup> <sup>are felt, almost speaking privately to her men, from the time addressing ladies of the club.</sup>

The average life of a policeman is from 15 to 16 years and the average is tending to increase, although many still

(6)

leave at the end of three years. Twenty-five years' service secures the pension. His own pride in the force, and his strong belief in the higher standard of duty that it was gradually putting before itself were two of the most vivid impressions left by this talk with Vedy, but I should fear that he would be disqualified even by his great merits, from being an officer who could be placed in charge of Divisions that have to deal with the more shady and seamy sides of life in ~~the~~ central and Western London.







