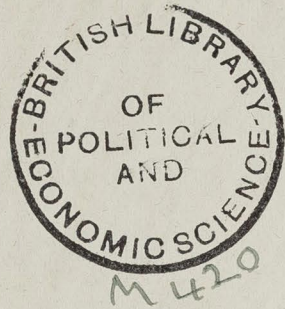
The image shows the front cover of an antique book. The cover is decorated with a traditional marbled paper pattern, featuring a complex, organic design of blue, red, and cream-colored veins. The spine of the book, visible on the left, is bound in a dark brown, textured material, likely leather or cloth. In the center of the cover, there is a light-colored, oval-shaped paper label. The label contains the number '22' written in a large, elegant cursive script, with the name 'Howard Buildings' written in a smaller cursive script directly below it.

22
Howard Buildings

R. COLL. U.

B 29

==



[a]

Howard Buildings 1-4
 Metropolitan " 5-7
 Albert Cottages 8-9
 Victoria " 9-10
 College Buildings 11-14 Park

Howard Bloys -

Rooms	Rent	Occupation	Wife	Children		Wages	Position
				Sch	un 3 over 13		
5	3/4	Superint.		4	2	2 bs. business	
5	8/6	Book Wks. widower out of work.		1		3 qs. business about 20. 5. 2 qs. home Teacher in sch.	
2	5/6	W. ill - no work lives on d's earnings.				1 d. over 20 business. pd.	
"	5/9	Pension. Army employ of Customs			1	12 3/6 pw. by 2 fams.	
"	5/3	W. tele. clerk. spinner				12 many qs. in the work more than 22/- per 30/-	
		Empty.					
"		Sister of Mercy.					
"		Packers			1	12 prob. 25/-	
3	6/6	Lab. on Bloys.		1		2 bs. out of w. 26/- 12	
"	7/9	Handymans on Bloys. w wife.				2 ds. 3 business 2 ds. over 20. 15. 3 30/-	
"		Sugar Wks.		2	3	about 27/-	
"		Rly. P.		3	3	about 27/- G.E.R.	
3	6/3	Horse Keep. Brewery.		2	1	about 26/-	
3	6/3	F. G.N.R.		3	2	19. home 3 2 bs. w. about 30/-	
3	6/-	Book Wks. req. wk.		1	2	Do.	
"		Pastry cook widower at Hill & Jones -				16. 2 work } under 20. about 30/- 19. 3 } 19. home.	
"	5/6	Pol.		2	1	16. imbecile home	
2	5/6	Paralyzed pensioner	about 10/- d. off. admiralty	1		16. business about 6/- 12.	pensioner brother 1/- day.
3	6/3	Pol.		3	1		
3	5/9	Whit. smite req. wk.	d. off.	4	2	about 30/-	mother in law lives here who only helps at home
"		Packers		2		16. been ill } 19. work } under 20. about 25/-	

No.	Rooms	Rent	Occupation	Wife	Children			Wages	Position
					Sch	un 3	over 13		
22	3 2 Sc.	5/9	Horse Keep. at flower gr.				1d. work. r	about 25/-	
23	2 + Sc.	5/3	Book bdy.		2	2		about 28/- r	
24	"	"	Do.		1	2		Do. r	
25	3	6/-	Pol.		3				
26	3 2 Sc.	5/6	Walking stick req. wk.		4	2	2 bs. w. 1 walk.	perhaps 30/-	
27	"	"	Horse Keep. G.E.R.		3	1		about 27/- r	
28	"	"	Pol.		3	2			
29	"	5/-	Lab. Handyman h. off.		2	2	1 q. home	fp about 25/-	
30	2	5/-	Lab.		2			fp. about 23/-	
31	" + Sc.	6/-	W. little needle wk.		3	1		fp prob. help	
32	3	6/-	Barrman		1	2		r	
33	"	6/3	Pol. Pension.					has had a B.H.	
34	"	"	W. business		2		1 q. business 1 d. home	} water 20 r	
35	"	6/-	W. alt. nearly 80				1 q. vnt. city about 24 yrs.	fp.	
36	"	6/3	Drayman			1		r about 20/-	
37	"	6/3	Sw Infirmary w/ tower was Calc. Dr.				2 ¹⁶ / ₁₉ business 1 d. home	} 12/6 a week. v. fp.	
38	"	6/-	Brew. Dray.			1		r	
39	"	6/3	Mark. P.		1	2		fp cas. wk.	
40	"	"	I's cutter		1	1	1 q. home	fp prob. drinks	
41	"	6/-	Pol.			3			
42	"	"	Printer					about 28/- req. wk.	

No.	Rooms	Rent	Occupation	Wife	Children			Wages	Position
					Sch	un 3	over 13		
43	3	6/3	Mark P.					2 vnt. w/ 9 one about 28/- prob. 30/-	req. wk. r
44	"	"	Horse Keep. Brewing		1	3			
45	"	6/-	C.		2	3		about 24/-	req. wk.
46	"	"	Blind work. at factory		2	1		r	Do.
47	"	6/3	Dairymen					r	emply. in Dairy.
48	"	"	Drayman		2	2		r	
49	"	6/-	Dairymen			2		r	
50	"	5/6	Lab. Sug. Ref.		1	1		about 26/-	
51	"	6/-	Drayman					r	
52	"	"	Pol.		1				
53	"	5/6	Stable men. B. vnt.		1	1		r	
54	"	5/3	Brick. Lab.				1 d. vnt. 20 in business	r	5 ^d . for. bus. in work. been out of wk.
55	"	5/6	Warehos.			2		r	
56	"	"	Dairymen			1		r	
57	"	5/3	Handyman glumbrg etc.			2		r	req. wk. occ. own acct.
58	"	6/-	Lab. waitcoat etc.				1 sit. waitcoat		req. wk.
59	"	6/3	Postiv		4	1		fp	p. req. wk.
60	3 + K	7/-	C.					11. wk. 28/-	r req. wk.
61	"	7/9	Scene paint. away fr. home				2 ds. 1 home 2 bs. 3 business		
62	"	"	H. Brew.				1 w. 2 b. home	£2	
63	"	"	Sug. Boil.		3	2	1 b. w.		

No.	Rooms	Rent	Occupation	Wife	Children			Wages	Position
					Sch	un 3	over 13		
64	3	6/3	Lab. at Currier		1	1		about 25/-	r
65	"	"	Pol. Pers. ^{with 2 in G. & R. P. & P.}				1 q. home		
66	"	"	W.		1		1 d. work.	r	2 sch. ch. are quick.
67	"	"	W. leather cutting at home		1		in college prob. for 1 s. business 1 d. home	r	
68	"	"	Gatekeeper Brewery - was accident			2		r	
69	"	5/6	mark. P.		4	2		28/-	req. wk.
70	"	"	Do.		1	1		r	Do
71	"	6/3	Home Keep. Brew.		1	3		r	
72	3	5/9	W. boots.				boots	ps	2 miles over 20.
73	"	"	no work. away. does jobs occ.				16. packers	ps	was cellarer.
74	"	"	Joiner				1 s. out of wk. over 20.	r	req. wk. was worked at sewing
75	"	5/3	Butch. invalid				2 s. business 1 d. home	r	
76	"	5/6	Lab. Sug. Ref.			2		about 25/-	
77	3	6/-	Home Keep. Brew.		4	2	1 q. home 16. work	about 26/-	ps
78	"	5/6	Sug. Ref.		4		2 s. business 1 q. home	about 28/-	
79	"	5/9	Blancher		2	2		r	req. wk.
80	"	5/6	Lab. work. wants. shop wk. irreg.		1	2		ps	matter in law since here
81	"	5/-	Sissy cutter		3	1	2 s. w.	ps	irreg. wk.
82	2	5/-	W. prob. 2nd. lot		3			v. jo.	
83			W. schoolmistress		1		2 ds. w.		

Metropolitan Bldgs - Albert Family Dwellings.

No.	Rooms	Rent	Occupation	Wife	Children			Wages	Position
					Sch	un 3	over 13		
1	3	5/-	B. checker			2		r	
2	2	4/3	W. char.			1	1 q. home (under 20)		struggling v. jo.
3	3	6/6	W. shop.				1 q. D. 1 s. at college who gen. pays up rents in arrears when he comes home - looks like a priest.	r	
4	2	5/-	W. no work.				1 s. wareh.	r	
5	3	6/6	F. G. & R. stables				1 d. (over 20) in shop.		
6	2	5/-	Rly. P.			1			
7	3	6/3	Drayman.			3			r
8	2	5/3	Brew. Serv. (15)						r
9	3	6/3	Comp. (9)			2	1		
10	2	5/-	Packer (5)				1		r
11	3	6/-	City missionary			1	2 ds. home		
12	2	5/-	Wine P. (5)			1			r
13	3	4/9	Bak. (15)			3	2		ps
14	"	5/-	Lab. Sug. Ref.			3	1 q.		
15	"	6/3	P. Rly. (16)				1 q. envelope fold. 2 q. 21 home. 16. wk.		
16	"	6/6	W. clean office (39)				1 q. crackers - fancy wk. 16. sol. office. 16. joiner's apprentice.		r
17	"	6/-	music mast (35a)			1			
18	"	6/6	Rly. Clerk (34a)			1	2		
19	"	6/-	P. Auction mast			2	16. butch. 16. office.		

No.	Rooms	Rent	Occupation	Wife	Children			Wages	Position
					Sch	un 3	over 13		
20	3	6/3	C. (5)		3		1b. van.	r	
21	"	6/-	Carrier			2		r	
22	"	6/3	Millman (20)		3		1b. dairy		
23	"	6/-	Car. Dr. w. (18)		2			r has a housekeeper prob. a relation	
24	"	5/9	St. cabinet (5) Brewer.		1			r	
25	"	5/-	Labr. (4)				1b. telegr. 1q. trying for	r telegr. situation.	
26	"	5/-	Ill mangle	3			1q. home	v. p.	
27	"	6/6	W. washing.				15. Insur. agent.	p.	
28	"	6/9	H. starch WKS.	3	1		2b. starching WKS.		
29	"	6/6	W. sewing.				3q. home 2 dress m.	r. mother here.	
30	"	6/6	2 single wov. go out to work in city - Dressmakers.						
31	"	6/3	Pension. fr. Comp- ositors fund.						
32	"	6/6	Pol. (21)		1				
33	"	6/-	Horse Keep (5)		2		1b. sectioner's wareho. 1q. milliner	r	
34	"	6/-	Dk. Labr. (5)		3			24/- r	
35	"	6/-	Barnman						
36	"	5/9	Fiv. Pol. (8)				1q. home 1b. work.	r	
37	"	5/-	Blsmith (10)		3	1		r	
38	"	5/-	Shoe fin. (14)		3			p	
39	"	6/6	C. (5)		3	2		p	
40	"	6/6	Labr. (4)		2		1b. office 1q. sews at home		

No.	Rooms	Rent	Occupation	Wife	Children			Wages	Position
					Sch	un 3	over 13		
41	3	6/9	W.						15. Dk. Clerk. r
42	"	6/6	Lab. Sup.						19. 3 wk. Waterlows.
43	"	6/6	Pack. case no wk. just now.		1		1q. home	r	have been thrifty & does wait-walk wk. prob. little money.
44	"	6/6	Ill. charring.		2				v. p.
45	"	6/3	Stick Dresser						was a carman - got paralysed. stroke. mother here.
46	"	6/-	Sup. Boil.		3	1			
47	"	6/-	Vellum bind.		3	1			
48	"	5/9	C.		3	1	1q. more.		
49	"	5/-	W. washing.		2		1q. helps.	v. p.	been here 17 yrs.
50	"	4/9	Ship Carp.		2	2	1q. home	p	
51	"	6/6	C. (3) wash. out of wk.				1d. wk. 15. carman.	p.	
52	"	6/9	Sup. Refin.		3	2	1b. office.		
53	"	6/9	Caretaker search wks.		3		2qs. at work.		Waterlows. r
54	"	6/6	Cellar.		3	1			
55	"	6/3	Wareho. wait.		2	1	1q. wait.	r	
56	"	6/3	Paint.		3	1			v. p.
57	"	6/3	Sup. Labr.			2			
58	"	6/3	Drayman			2			r
59	"	6/-	Packer				2bs. work.	r	
60	"	6/-	Pack. case		4	1	1b. pupil teach.	r	

St. Albert Cottages -

No.	Rooms	Rent	Occupation	Wife	Children			Wages	Position
					Sch	un 3	over 13		
81	1	5/9	Drayman.						
83	2	6/3	Sch. B. V. V. (m. J. C. Davis)			1 sister home.			
85	3	6/-	C. (5)			brother - agency job. nephew - architect's office - prob. no salary.			
87	4	5/6	Drayman		2				
89	5	5/6	Turner (wood.)		2	1 b. office. 7/6			
91	6	6/-	Brew. Lab.		1	1 q. dress.			
93	7	6/-	W. wash.		2	1 b. Brewery. V. Jo. misc. by.			
95	8	5/6	Carpet fitter's assistant		2				
97	9	5/9	Cellar.		2	1			mother here used to be monthly wages
99	10	6/-	W.			1 s. Rly. Clerk.			
101	11	6/-	Drayman						
103	12	5/9	Script. writer						
105	13	5/9	C. (5)		1	1			
107	14	6/-	Carpet fitter's assistant		2	1			
109	15	6/-	Leather Salesman's shop. assist.		3	1			
111	16	5/9	metal H.			1			
113	17	6 32	Sm. Shop. W. (41)			1	1	1	sister lives here
18	5	10/6	Shop. (29) wait.						1 q. (over 20) wait. 1 b. at office.
19	"	11/-	Carp. shop						1 q. home & shop 2 b. 1 sup. carp. 1 d. upholsterer.
20	3	5/6	Swalish						
21	"	6/-	Eng.						

No.	Rooms	Rent	Occupation	Wife	Children			Wages	Position
					Sch	un 3	over 13		
22	3	6/-	Pol. (21)			2			
23	"	5/9	Valet.		1			1 q. fancy work.	comes home every night.
24	"	5/6	Rly. P. (17)						
25	"	6/-	Pol. (21)			1			
26	"	6/-	Drayman						
27	"	5/9	C. (5)		3				
28	"	5/9	Polman (19)		2				
29	"	6/-	Pol. (21)			2			
30	"	6/-	Carp. (7)			1			req. wk.
31	"	5/9	Drayman						
32	"	5/6	Night Watch (5)		3		1 b. office.		
33	"	6/-	Milkman (20)			2			
34	"	5/9	D. (20)			1			
35	"	5/6	Rly. P. (17)		2	1			

Victoria Cottages -

1	3	6/3	Brew. Lab.						
2	"	6/6	Flusher B. Wks.			2		1 vol. 30.	
3	"	6/3	Brew. Sew.		2	1			
4	"	6/3	Drayman.				1 b. brewery		
5	"	6/3	Book binder.			1			

No.	Rooms	Rent	Occupation	Wife	Children			Wages	Position
					Sch	un 3	over 13		
6	3	6/6	Horse Keep. (5)			2	r		
7	"	5/6	Dk. Lab. (5)			2	r		
8	"	"	Printer			3			
9	"	6/-	Horse Keep. (5)		1		r		
10	"	6/3	Blk. Coach. (18)		3	1	1b. office. v. jo.		
11	"	6/6	Printer			1			
12	"	6/3	Lab. Sup.						
13	"	6/3	Brew. Serv.			2	r		
14	"	6/6	Eng.		1		r		
15	"	6/6	Pol. Pension.		1		1b. messenger		
16	"	6/-	Watchman						
17	4	7/3	Carpet fitter's assistant				1q. upholster. 1b. carpets.	r	
18	4	7/3	Printer		2	1			
19	4	7/9	C.				1q. milliner	req. wk.	
20	4	7/9	Parman Sup. Ref.		2	1	1q. house. 1b. office	35/-	
115-21			Offices.						
117-22									
119-23	4	7/9	Eng.		4	2		r	
121-24	4	7/3	Sugar checker		1		1b. office.	r	
123-25	3	6/-	Book binder		1	1			
125-26	3	6/3	W. mangle		3	1	1q. at work.	v. jo.	
127-27	3	6/3	Eng. Dr. (Sup. Ho.)				1q. home	r	
129-28	3	5/9	Blk. Coach.		3	2		jo.	
131-29	"	"	Pol.						
133-30	"	6/3	messenger		2		1b. wk.	25/- r	
135-31	"	"	Cas. Lab.		1	1	1b. home	v. jo.	
137-32	"	5/9	Belted mark. wait. every. changed his occupation		2		1q. waistcoat.	r	
139-33	"	"	mark. P.					r	
141-34	"	6/3	Waveller prob. cloth. dealer		3	2		v. jo. prob. travels to see what he can pick up.	
143-35	"	6/3	W. deans office		3	1	1q. at work factory.	v. jo.	
145-36	"	5/9	Brew. Lab.				1b. office.	r	

Prisoner 8/1.

Miss Busk

No.	Rooms	Rent	Occupation	Wife	Children			Wages	Position
					Sch	un 3	over 13		
College Blocks.									
Middle Block									
20	2	5/6	(37) no work mangle		4	1			and dipomania been salt.
22	"	(9)	Pl's Reatv.			2			
26	"	(43)	W. prob. means.		2		1q. home		deserted.
24	"	(34)	Salesman						
25	"	(0)	Empty						
27	"		Commission.						empty at Sherr Swille & Co.
28	"	5/3	(34a) Deputy Overseer			2			
29	"	5/6	Bldg. Wks. H. on S. & W. W. R.						
30	"	5/-	Empty						
31	"	5/6	Lamp light.		3	1		22/-	jo
32	"	(44)	W. Kally woman					r	
33	"	5/-	(9) Machinist to Dly. Mews.		1				w/ld. 20 yrs. at t.
34	"	(10)	Eng.		2	1		r	
35	"	4/9	(14) I.		1			r	
36	"	5/-	(5) Furnaceman			2		23/-	req. wk. r
37	"	4/6	(14) P. Ply.			1			
38	"	(5)	C.		2	2		23/-	jo
39	"	5/13	(13) Brick. Lab.					r	
40	"		Empty						

No.	Rooms	Rent	Occupation	Wife	Children			Wages	Position
					Sch	un 3	over 13		
41	}	6/9	Off. merch. Serv. prob. mate	—	—	—	—	—	
42									
43									
44	—	—	Business	—	—	—	—	—	
45	2	2/6	W. cook	—	—	—	12	—	
		u room	W. waitress	—	—	—	12	—	
46	2	2/6	W. plumbers of Tower Handls.	—	—	—	12	—	
47	2	2/6	Empty	—	—	—	—	—	
48	2	4/6 (5)	C.	—	2	—	25/- 12	—	
49	}	9/-	Ball rooms etc.	5	1	19. home 216. Do.	12	well to do.	
50									
51									
52	}	10/-	Curalet (single)	—	—	—	—	—	
53									
54									
55			Empty	—	—	—	—	—	
56			Do.	—	—	—	—	—	
57			Empty	—	—	—	—	—	
58			Do.	—	—	—	—	—	
59	}	5/-	Horse Keep. private Rly. Servant	—	—	—	22/- to 24/-	12	
60									
61	2	5/-	Empty	—	—	—	—	—	

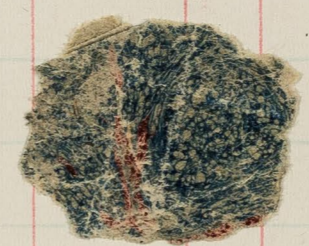
No.	Rooms	Rent	Occupation	Wife	Children			Wages	Position
					Sch	un 3	over 13		
62	}	10/-							
63									
64									
65									
East Block - (let in alt of H. rooms.)									
66	}	4	9/-						Empty
67									
68	}	4	9/-						Do.
69									
70	}	4	9/-						Sol. Clerk.
71									
72	}	4	9/-						Empty
73									
74	}	8/6							Do.
75									
76	}	8/6							Do.
77									
78	}	8/-							W. (?)
79									
80	}	8/-							I's cutter
81									
									7 ch. ages?
									12 deserted
									12 5 ch. ages(?)

No.	Rooms	Rent	Occupation	Wife	Children			Wages	Position
					Sch	un 3	over 13		

No.	Rooms	Rent	Occupation	Wife	Children			Wages	Position
					Sch	un 3	over 13		

No.	Rooms	Rent	Occupation	Wife	Children			Wages	Position
					Sch	un 3	over 13		

No.	Rooms	Rent	Occupation	Wife	Children			Wages	Position
					Sch	un 3	over 13		



SPOTTISWOODE & CO
Stationers Printers
and
Account Book Makers.
54, GRACECHURCH ST.

